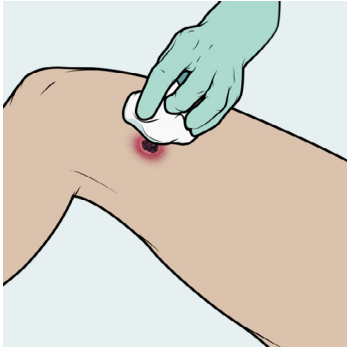


Collecting a Eschar Swab for Rickettsial Diagnostics



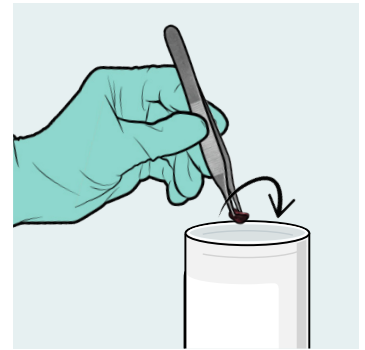
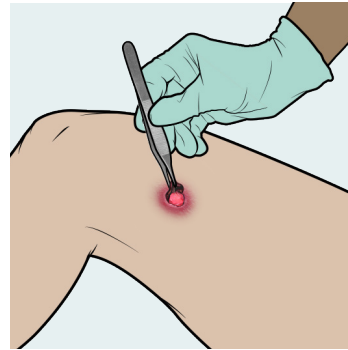
1



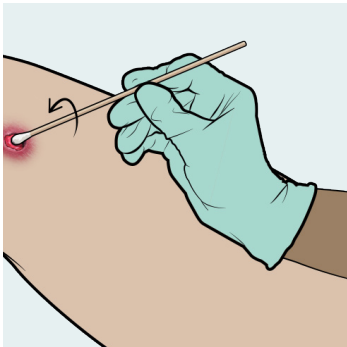
Clean the eschar with a standard disinfectant solution.
Use sterile saline to remove remaining disinfectant.

2

Use sterile tweezers to lift the scab partially or completely. It is not necessary to remove the scab entirely if it is firmly attached. Place the scab into an empty, sterile specimen container.



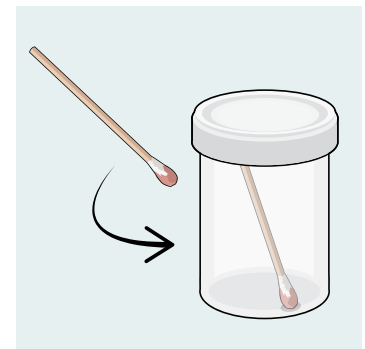
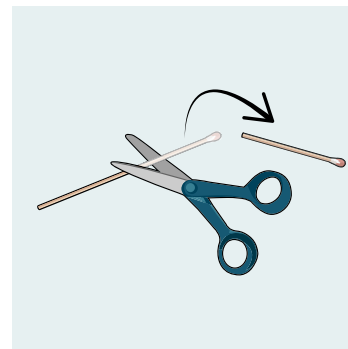
3



Use a dry, sterile cotton swab to sample the ulcerated area. Rotate the swab vigorously on the ulcerated area while applying steady, gentle pressure.

4

Place the swab in a sterile specimen container. The swab can be placed in the same sterile specimen container as the scab.



5

Ship specimen immediately overnight on cold packs or freeze and ship on dry ice. Please refer to required sample storage and packaging guidelines at [cdc.gov/vector-borne-diseases/media/pdfs/FS_RickettsialSpecimenSubmissionGuidelines-508.pdf](https://www.cdc.gov/vector-borne-diseases/media/pdfs/FS_RickettsialSpecimenSubmissionGuidelines-508.pdf)

Visit [cdc.gov/other-spotted-fever/site.html](https://www.cdc.gov/other-spotted-fever/site.html) for more information.

For questions, contact CDC's Rickettsial Zoonoses Branch at rzbrefoxlab@cdc.gov or rzbepidiag@cdc.gov.