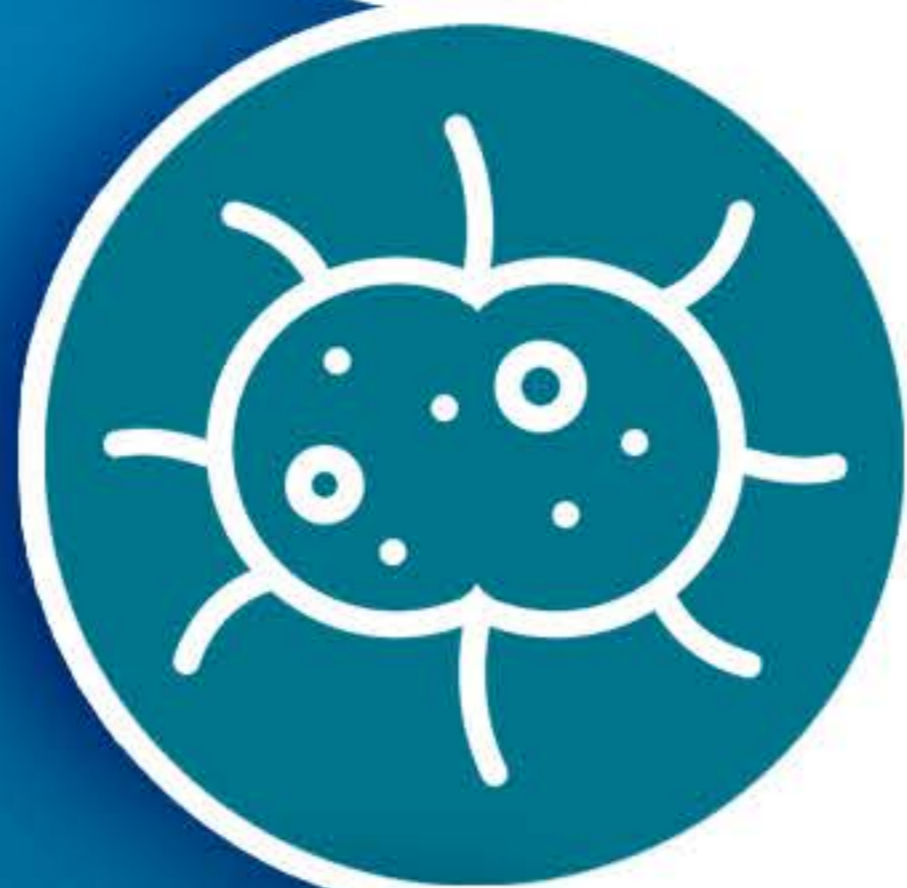


THE STATE OF STIS IN



CASES OF CHLAMYDIA



CASES OF GONORRHEA



CASES OF SYPHILIS

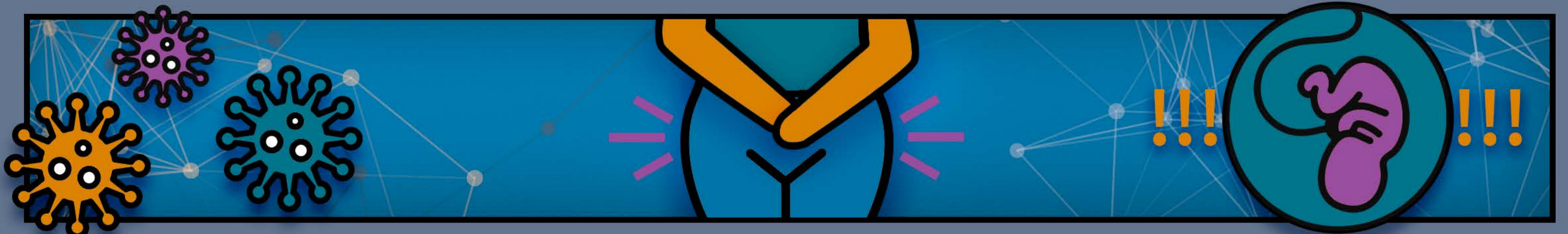


CASES OF SYPHILIS
AMONG NEWBORNS

LEARN MORE AT: www.cdc.gov/sti/

ANYONE WHO HAS SEX COULD
GET AN STI, BUT SOME GROUPS
ARE MORE AFFECTED

LEFT UNTREATED, STIs CAN CAUSE:



INCREASED RISK OF GIVING
OR GETTING HIV

LONG-TERM
PELVIC/ABDOMINAL PAIN

INABILITY TO GET PREGNANT OR
PREGNANCY COMPLICATIONS

PREVENT THE SPREAD
OF STIS WITH THREE
SIMPLE STEPS:

talk } **test** } **treat**



U.S. CENTERS FOR DISEASE
CONTROL AND PREVENTION