

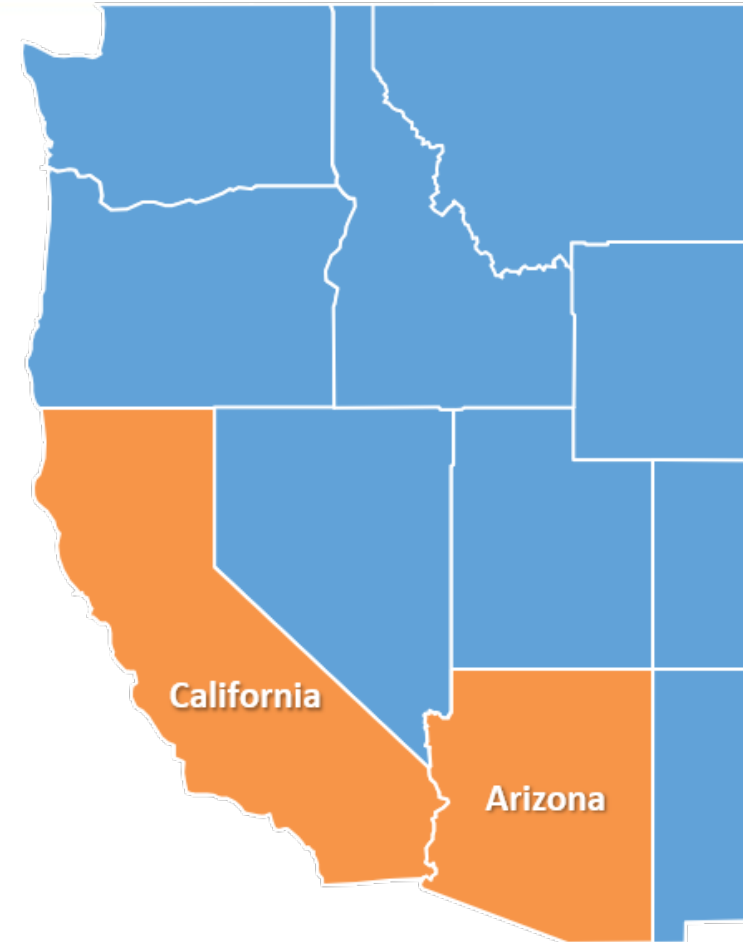


# Quality Innovation Network-Quality Improvement Organization (QIN-QIO) Assistance With National Healthcare Safety Network (NHSN) Reporting

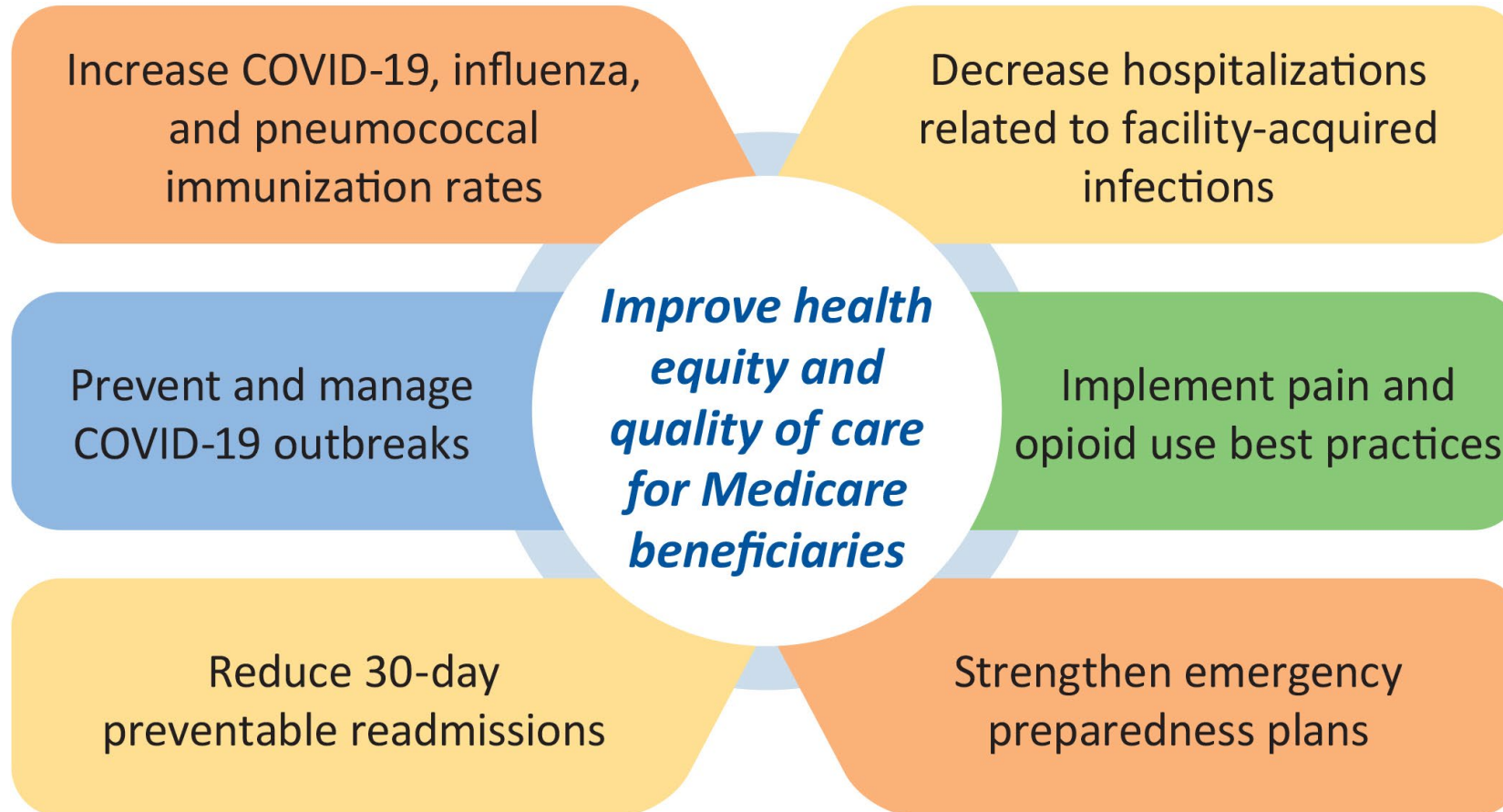
Simi Williams, MPH, RAC-CT, CPHQ  
Senior Quality Improvement Specialist  
Health Services Advisory Group (HSAG)

# HSAG QIN-QIO: Who We Are

- HSAG is the Medicare QIN-QIO for Arizona and California.
- QIN-QIOs in every state and territory are united in a network administered by the Centers for Medicare & Medicaid Services (CMS).
- The QIN-QIO Program is the largest federal program dedicated to improving health quality at the community level.



# HSAG QIN-QIO: What We Do for Medicare Beneficiaries



# Objectives



Explore the timeline of NHSN reporting for long-term care facilities (LTCFs).



Discuss how to use data to target improvement efforts.



Review resources that can assist with consistent and accurate NHSN reporting.



# NHSN





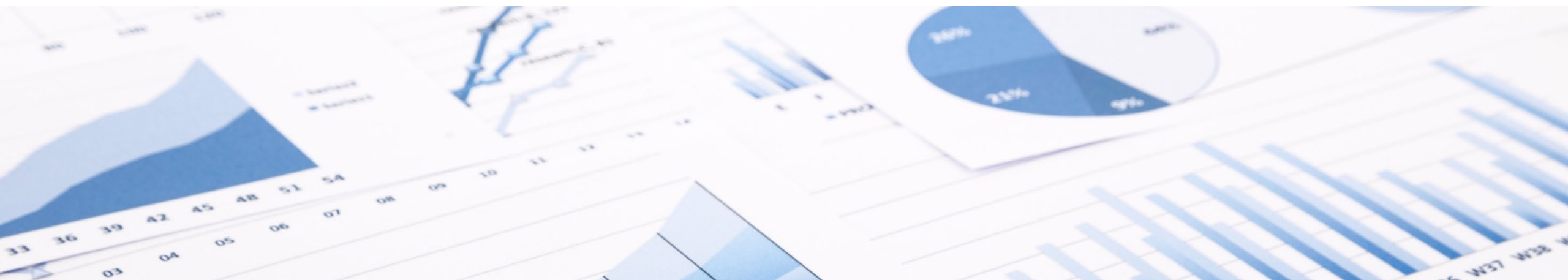
# NHSN Features

- Facilities required to report to NHSN:
  - Acute care hospitals
  - Long-term acute care hospitals
  - Inpatient rehabilitation facilities
  - PPS-exempt cancer hospitals
  - Outpatient dialysis facilities
  - **LTCFs**
- Is the nation's most widely used healthcare-acquired infection (HAI) tracking system.
- Provides facilities, states, regions, and the nation with:
  - Data needed to identify problem areas.
  - A means to measure the progress of prevention efforts.
- No cost to users.





# Using Data to Target Improvement Efforts



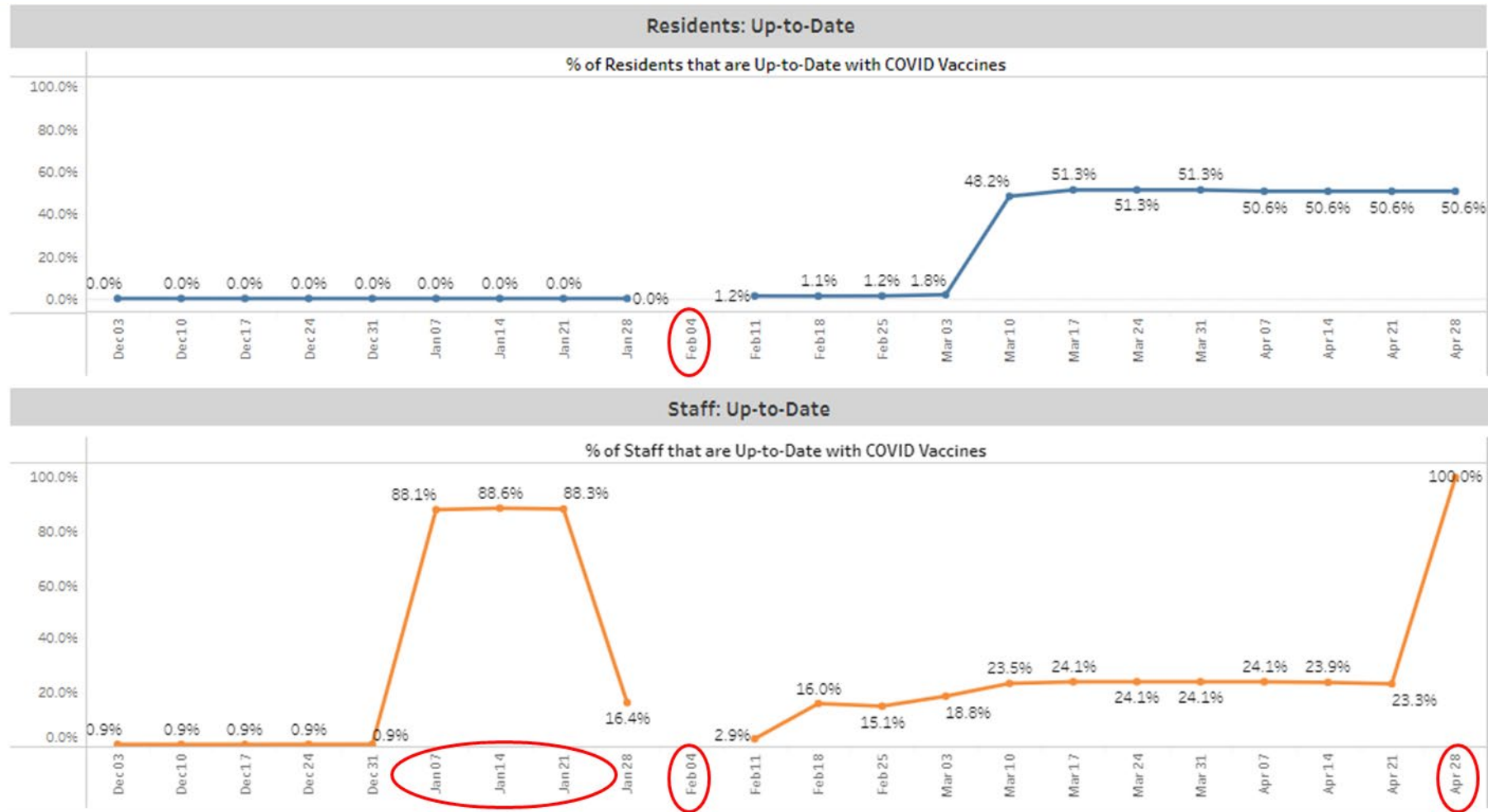
# Prioritizing Outreach

1. CMS COVID-19 LTCF Data
  - [data.cms.gov](https://data.cms.gov)
2. HSAG State-Specific Group in NHSN
  - Review data in real time
  - Validate data corrections



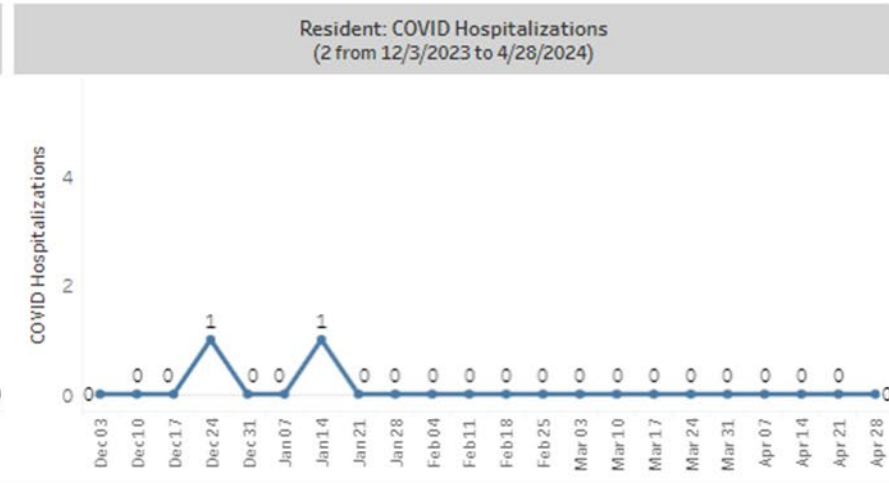
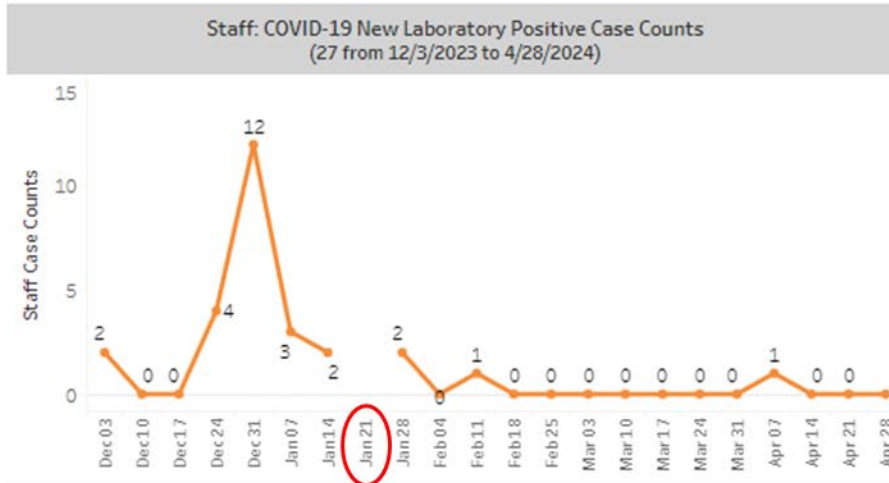
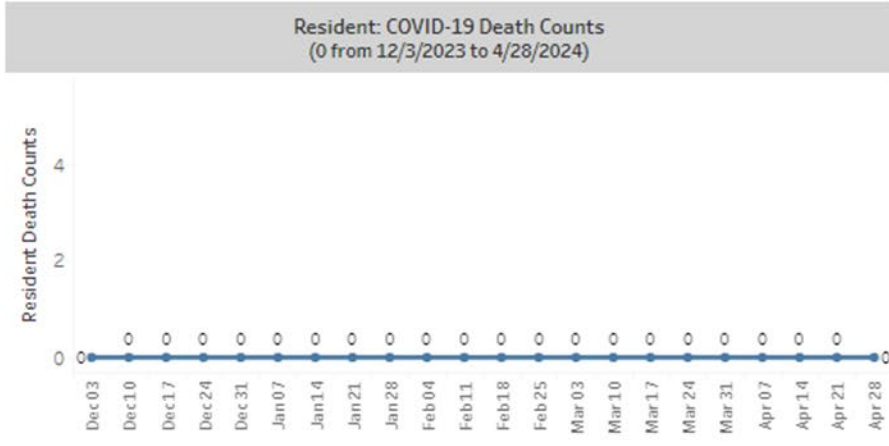
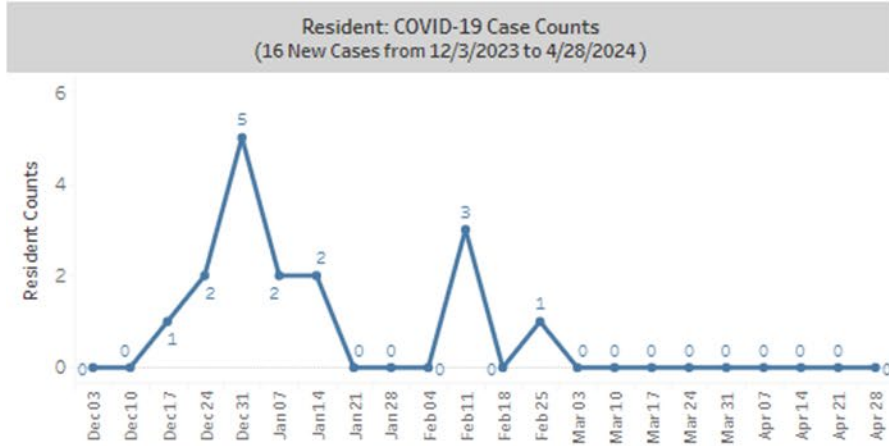


# HSAG COVID-19 Vaccine Trend Reports



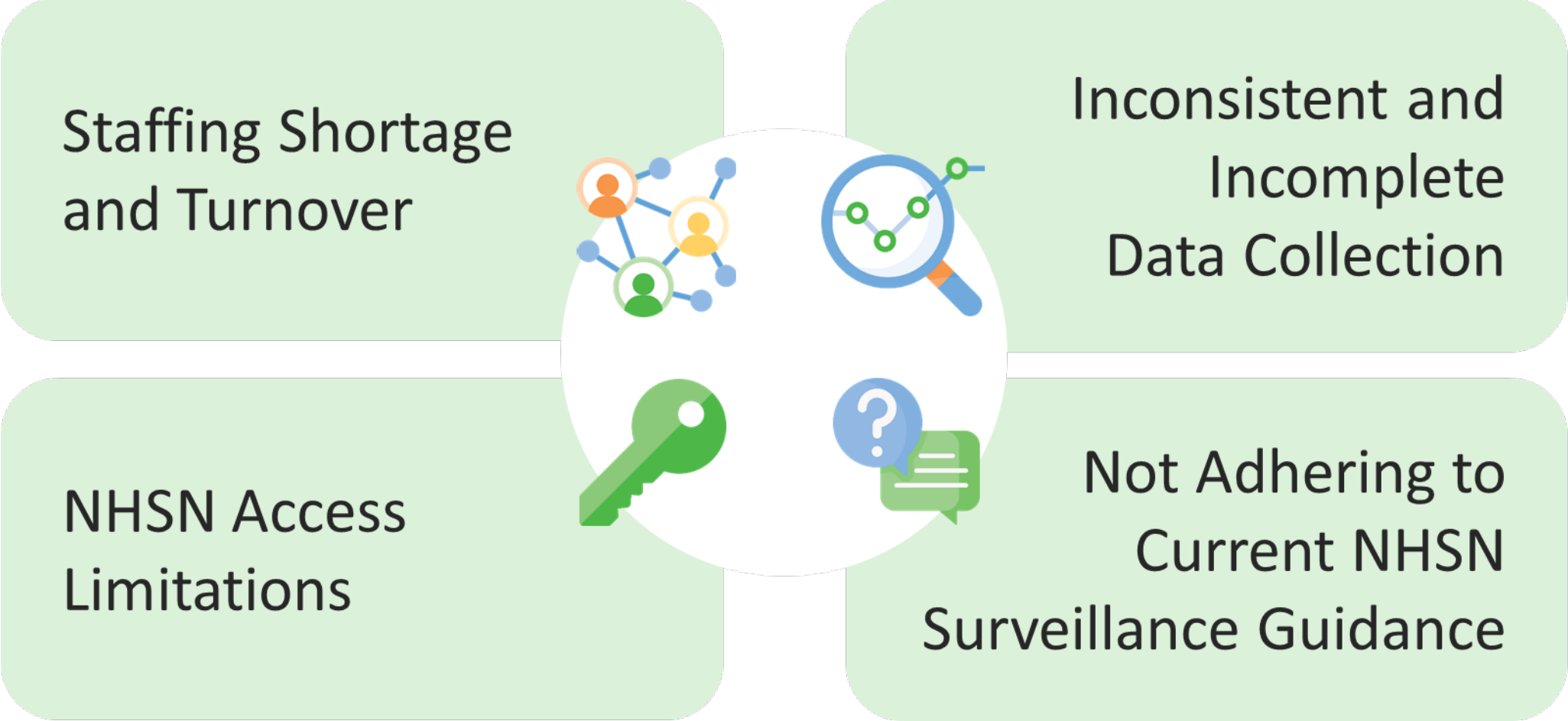
Data have been obtained from NHSN.

# HSAG COVID-19 Run Charts



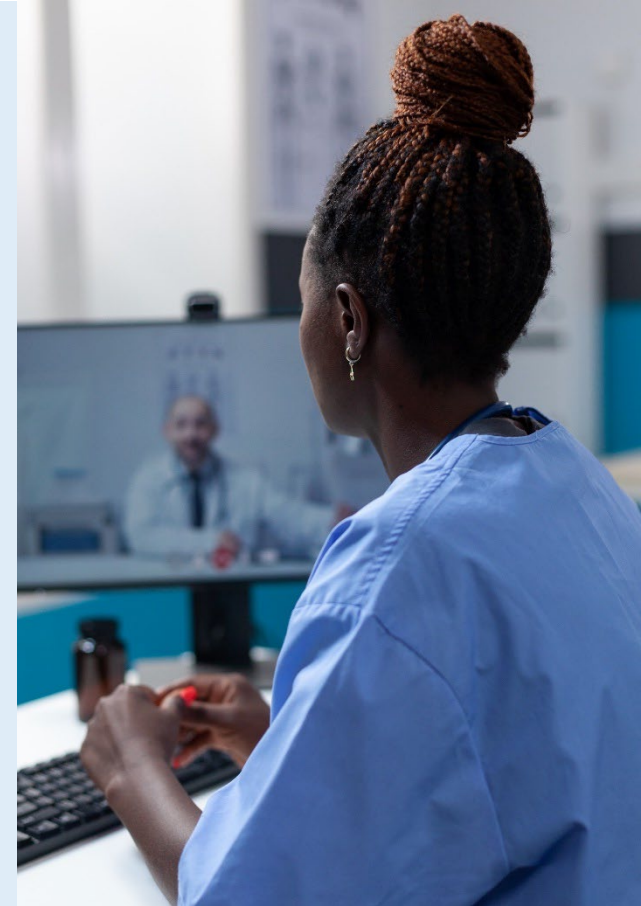
Data have been obtained from NHSN.

# Common LTCF Barriers to Data Accuracy



# Educational Opportunities

- National trainings hosted by the Centers for Disease Control and Prevention (CDC)
- On-demand NHSN recorded education
- HSAG-hosted events:
  - Monthly NHSN and HAI updates and office hour calls
  - Statewide nursing home infection prevention webinars and COVID-19 care coordination post-acute care calls

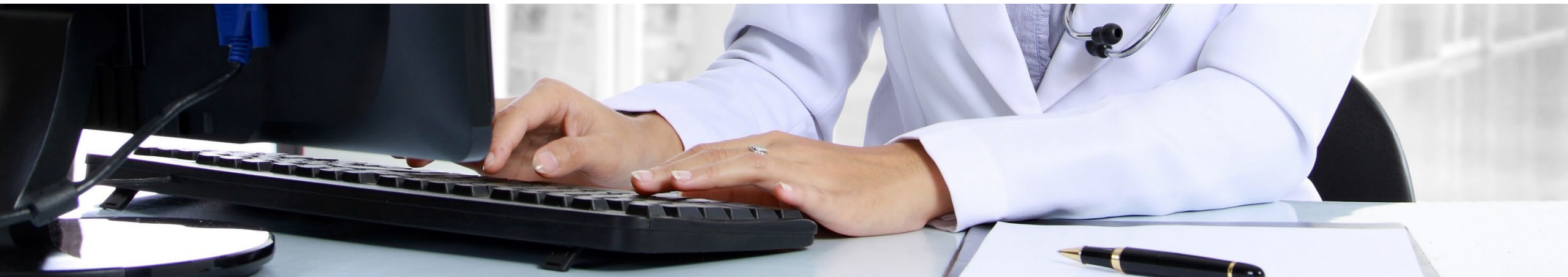


# Data-Driven, One-on-One Assistance

- Enrollment and access to NHSN
- Coaching on NHSN modules
  - How to enter required weekly vaccination data
  - How to correct data errors from previous weeks
- Vaccine data tracking tools
  - Person-level reporting in NHSN
- Registration to statewide immunization registries

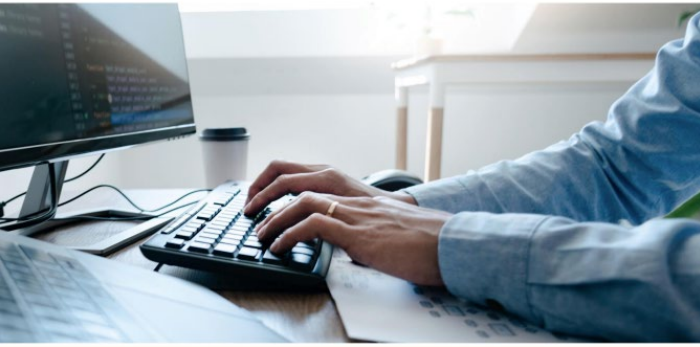


# Tools and Resources





# HSAG NHSN Resources




**Quality Improvement Organizations**  
Sharing Knowledge. Improving Health Care.  
CENTERS FOR MEDICARE & MEDICAID SERVICES

**HSAG** HEALTH SERVICES ADVISORY GROUP

## Survival Guide for Mandatory National Healthcare Safety Network (NHSN) Reporting for Long-Term Care Facilities (LTCFs)

Updated April 2024

## Survival Guide for Mandatory NHSN Reporting for LTCFs



**Quality Improvement Organizations**  
Sharing Knowledge. Improving Health Care.  
CENTERS FOR MEDICARE & MEDICAID SERVICES

**HSAG** HEALTH SERVICES ADVISORY GROUP

## Long-Term Care Facility (LTCF) National Healthcare Safety Network (NHSN) Frequently Asked Questions, Scenarios, and Important Links

### Common Scenarios

**How Do New LTCF Staff Members Gain Access to NHSN?**

**Scenario:** I am new to a facility and would like to gain access to NHSN to report my facility's COVID-19 data to meet the [Centers for Medicare & Medicaid Services \(CMS\) reporting requirements](#).

- Important Reminder: Do not use the [5-Step Enrollment for LTCFs](#) to re-enroll your facility.
- If your facility's NHSN Facility Administrator (FADMIN) is still available, the FADMIN can [add you as a new user](#). If they would like to reassign you as the new FADMIN, please follow the steps available on the [NHSN FADMIN page](#) to [reassign the NHSN FADMIN role](#). The NHSN FADMIN does not need to be the Nursing Home Administrator. The NHSN FADMIN is the only person who can reassign the role of NHSN FADMIN to another existing user. This individual enrolls the facility, adds users, and then gives those users whichever rights are most appropriate—including administrative rights. Therefore, more than one person per facility can have administrative rights, but only one will be designated as the NHSN FADMIN.
- If your facility's FADMIN is no longer available, the incoming NHSN FADMIN should complete the [NHSN Facility Administrator Change Request Form](#) to request the change in the absence of the current FADMIN. If you are already registered for SAMS previously from another facility, please use the same email address you used to log into NHSN. If you are not already registered for SAMS, completing this online change request form will invite you to register for SAMS. An email from [sams-no-reply@cdc.gov](mailto:sams-no-reply@cdc.gov) will be sent to the email address you provide. Follow the steps on the [CDC's SAMS webpage](#) to register for SAMS.

### Important Links

**Centers for Disease Control and Prevention's (CDC's) NHSN**

- [Overview](#)
- [FAQs about NHSN](#)

**CDC's Secure Access Management Services (SAMS)**

- [Overview](#)
- [SAMS NHSN User FAQs](#)

**LTCF Component in NHSN**

- [Overview](#)
- [LTCF COVID-19 Module](#)

Page | 1

## Frequently Asked Questions Regarding NHSN Access Issues

# Best Practices

- Check your NHSN account every Friday to ensure your data have been submitted properly.
- Ensure that a minimum of 2 staff members have access to your facility's NHSN account at all times.
- Use the Person-Level Reporting Tool.
- Submit your Annual Influenza Vaccination Report prior to May 15 each year.
- **Contact your QIN-QIO for resources and assistance with NHSN.**





Thank you!

Simi Williams  
[swilliams1@hsag.com](mailto:swilliams1@hsag.com)



This material was prepared by Health Services Advisory Group (HSAG), a Quality Innovation Network-Quality Improvement Organization (QIN-QIO) under contract with the Centers for Medicare & Medicaid Services (CMS), an agency of the U.S. Department of Health and Human Services (HHS). Views expressed in this material do not necessarily reflect the official views or policy of CMS or HHS, and any reference to a specific product or entity herein does not constitute endorsement of that product or entity by CMS or HHS. Publication No. QN-12SOW-XC-05312024-01