

COVID-19 Vaccination Modules: Understanding Key Terms and Up to Date Vaccination

This document defines key terms related to COVID-19 vaccination for the purpose of NHSN public health surveillance. Facilities can review these definitions when reporting data through the NHSN COVID-19 Vaccination Modules.

This document will be updated to reflect any changes as COVID-19 vaccination guidance evolves (for example, updates to CDC’s Up to Date vaccination definition). This document will be updated quarterly. Use the definitions for the reporting period associated with the reporting weeks included in your data submission.

Contents

COVID-19 Vaccination Modules: Understanding Key Terms and Up to Date Vaccination	1
Reporting Period: Quarter 4 of 2024 (September 30, 2024 – December 29, 2024)	2
Reporting Period: Quarter 2 2024 (April 1, 2024 – June 30, 2024) and Quarter 3 2024 (July 1, 2024 – September 29, 2024).	6
Reporting Period: Quarter 1 2024 (January 1, 2024 – March 31, 2024)	13
Reporting Period: Quarter 4 2023 (September 25, 2023 – December 31, 2023)	19
Reporting Period: Quarter 3 2023 (June 26, 2023 through September 24, 2023)	26
Reporting Period: Quarter 1 2023 (December 26, 2022 – March 26, 2023) and Quarter 2 2023 (March 27, 2023 – June 25, 2023)	33
Reporting Period: Quarter 4 2022 (September 26, 2022 – December 25, 2022).....	38
Reporting Period: Quarter 3 2022 (June 27, 2022 – September 25, 2022)	39
Reporting Period: Quarter 2 2022 (May 30, 2022 – June 26, 2022)	42
Appendices: Decision Trees on Reporting Vaccination Status.....	44
Appendix 1a: Up to Date with COVID-19 vaccines during the surveillance period of Quarter 4 of 2024 (September 30, 2024 – through December 29, 2024) for question 2a	44
Appendix 1b: Decision trees for the case and hospitalizations questions (3ai, 4a, and 4ai) during the surveillance period of Quarter 4 of 2024 (September 30, 2024 – through December 29, 2024)	45



Reporting Period: Quarter 4 of 2024 (September 30, 2024 – December 29, 2024)

The following definitions apply when reporting data through the **NHSN Long-Term Care Facility Respiratory Pathogens and Vaccination Modules** for the reporting period of Quarter 4 2024 (representing data for **September 30, 2024 – December 29, 2024**).

*Individuals are considered **Up to Date with COVID-19 Vaccines** during the surveillance period of September 30, 2024 – December 29, 2024, for the purpose of NHSN surveillance, if they meet the following criteria:**

Received a 2024-2025 updated COVID-19 vaccine, or

Received a 2023-2024 COVID-19 vaccine within the past 2 months.

For cases (newly positive tests):

A resident with a newly positive SARS-CoV-2 viral test result who received a 2024-2025 updated COVID-19 vaccine, or received a 2023-2024 COVID-19 vaccine within the past 2 months should be counted in the up to date category if vaccine was received 14 days or more before the specimen collection of the newly positive test result. In other words, a resident with a newly positive COVID-19 test result is counted in the up to date category if they received the vaccine at least 14 days before the positive test.

*The 2024-2025 updated COVID-19 vaccine was approved by the FDA on August 22, 2024. CDC recommends a single dose of the updated, 2024-2025 COVID-19 vaccines for individuals who are 12 and older to protect against serious illness from COVID-19 and remain up to date. Please see [Staying Up to Date with COVID-19 Vaccines | COVID-19 | CDC](#) for further details.

Please see examples in the table below as well as Appendix 1a and 1b for additional information.

Examples: Up to Date with COVID-19 Vaccines (Quarter 4 of 2024)

Examples	Is this individual counted as Up to Date with COVID-19 vaccines in the Respiratory Pathogens and Vaccination Modules ?
<ul style="list-style-type: none"> Mary, a healthcare worker, received a dose of the 2024-2025 updated COVID-19 vaccine on August 30, 2024. Mary tested positive for COVID-19 five days ago. 	<p>Yes, Mary is Up to Date with COVID-19 vaccines because she received the 2024-2025 updated COVID-19 vaccine.</p> <p>Mary is counted in question #1 (total healthcare personnel) and question #2 in the HCP tab as Up to Date with COVID-19 vaccines.</p> <p>Mary is a healthcare worker; therefore, she would not be included in any of the case and hospitalization counts as those variables only collect data for residents. Within the HCP tab, only vaccination status among healthcare workers is collected.</p>
<ul style="list-style-type: none"> Tom, a nursing home resident, received a 2023-2024 COVID-19 vaccine on August 15, 2024. Tom tested positive for COVID-19 6 weeks after receiving the 2023-2024 updated COVID-19 vaccine. 	<p>Yes, Tom is Up to Date with COVID-19 vaccines because he received a 2023-2024 COVID-19 vaccine within the past two months.</p> <p>Tom is counted in questions:</p> <ul style="list-style-type: none"> 1 (total residents) 2a (up to date with COVID-19 vaccines) 3a (COVID-19 positive test) 3ai (COVID-19 positive test and up to date) <p>Tom would need to receive the 2024-2025 updated COVID-19 vaccine after October 15, 2024, to remain Up to Date.</p>
<ul style="list-style-type: none"> Jackie, a nursing home resident, received a 2023-2024 COVID-19 vaccine on October 30, 2023. She has not received any other COVID-19 vaccines since then. Jackie tested positive for COVID-19 in September 2024. Jackie was transferred to the ER but was not 	<p>No, Jackie is not up to date with COVID-19 vaccines since she received the 2023-2024 COVID-19 vaccine over two months ago and has not yet received the 2024-2025 updated COVID-19 vaccine.</p> <p>She did however test positive and would need to be included in the COVID-19 positive test count. Since she was not admitted to the hospital she would not be included in the hospitalizations questions.</p>

<p>admitted to the hospital.</p>	<p>Jackie is counted in question:</p> <ul style="list-style-type: none"> • 1 (total residents) • 3a (COVID-19 Positive test)
<ul style="list-style-type: none"> • Frank, a nursing home resident, received a 2023-2024 COVID-19 vaccine on May 1, 2024. • Frank declined to receive the 2024-2025 updated COVID-19 vaccine. • Frank tested positive for COVID-19 2 days ago. 	<p>No, Frank is not Up to Date with COVID-19 vaccines since he received the 2023-2024 COVID-19 vaccine over two months ago and has declined the 2024-2025 updated COVID-19 vaccine.</p> <p>He did however test positive and would need to be included in the COVID-19 positive test count.</p> <p>Frank is counted in question:</p> <ul style="list-style-type: none"> • 1 (total residents) • 3a (COVID-19 Positive test)
<ul style="list-style-type: none"> • Brenda, a healthcare worker, has not received any prior COVID-19 vaccines. • Brenda reported a medical contraindication that prevents her from receiving the 2024-2025 updated COVID-19 vaccine. 	<p>No, Brenda is not Up to Date with COVID-19 vaccines because she has a medical contraindication that prevents her from receiving the 2024-2025 updated COVID-19 vaccine.</p> <p>Brenda would be counted in question #3.1 in the HCP tab as having a medical contraindication to the COVID-19 vaccine.</p> <p>Brenda is a healthcare worker; therefore, she would not be included in any of the case and hospitalization counts as those variables only collect data for residents. Within the HCP tab, only vaccination status among healthcare workers is collected.</p>
<ul style="list-style-type: none"> • Sandy, a healthcare worker, received a 2023-2024 COVID-19 vaccine on March 30, 2024. She has not received any other COVID-19 vaccines since then. • She is planning to receive the 2024-2025 updated COVID-19 vaccine but has not yet had the opportunity to do so. • Sandy has not tested positive for COVID-19. 	<p>No, Sandy is not Up to Date with COVID-19 vaccines since she received the 2023-2024 COVID-19 vaccine over two months ago and has not yet received the 2024-2025 updated COVID-19 vaccine.</p> <p>Sandy would be counted in question #3.3 in the HCP tab as having an unknown/other COVID-19 vaccination status.</p> <p>Sandy is a healthcare worker; therefore, she would not be included in any of the case and hospitalization counts as those variables only collect data for residents. Within the</p>

COVID-19 Vaccination Modules: Key Terms

	HCP tab, only vaccination status among healthcare workers is collected.
--	---

Reporting Period: Quarter 2 2024 (April 1, 2024 – June 30, 2024) and Quarter 3 2024 (July 1, 2024 – September 29, 2024).

The following definitions apply when reporting data through the **NHSN COVID-19 Vaccination Modules and the Resident Impact and Facility Capacity (RIFC) Pathway** for the reporting period of Quarter 2 2024 (representing data for **April 1, 2024 – June 30, 2024**) and Quarter 3 2024 (representing data for **July 1, 2024 – Sept 29, 2024**)

*Individuals are considered **Up to Date with their COVID-19 Vaccines** during the surveillance periods of April 1, 2024 through June 30, 2024 and July 1, 2024 through September 29, 2024 for the purpose of NHSN surveillance if they meet the following criteria**

Individuals aged **65 years and older** are up to date when they have:

Received 2 doses of the updated 2023-2024 COVID-19 vaccine, **or**

Received 1 dose of the updated 2023-2024 COVID-19 vaccine within the past 4 months.

Individuals **younger than 65 years of age** are up to date when they have:

Received 1 dose of the updated 2023-2024 COVID-19 vaccine.

* As of September 12, 2023, the 2023-2024 updated Pfizer-BioNTech and Moderna COVID-19 vaccines were recommended by CDC for use in the United States. As of October 3, 2023, the 2023-2024 updated Novavax vaccine was recommended for use in the United States. The 2023-2024 updated COVID-19 vaccine more closely targets the XBB lineage of the Omicron variant and could restore protection against severe COVID-19 that may have decreased over time. Please see [Stay Up to date with COVID-19 Vaccines](#) for further details.

For the **Long-Term Care Facility Resident Impact and Facility Capacity (RIFC) Pathway** (part of the COVID-19 Surveillance Pathways: Resident Impact and Facility Capacity and Staff and Personnel Impact) only: a resident with a newly positive SARS-CoV-2 test result is counted in the Up to date category if they received the vaccines required to be Up to date (according to the definition above) at least 14 days before the positive test.

Please see examples in the table below as well as Appendix 1a and 1b for additional information.

COVID-19 Vaccination Modules: Key Terms

2023-2024 Updated COVID-19 Vaccine

The 2023-2024 updated COVID-19 vaccine more closely targets the XBB lineage of the [Omicron variant](#) and could restore protection against severe COVID-19 that may have decreased over time. As of September 12, 2023, the 2023-2024 updated Pfizer-BioNTech and Moderna COVID-19 vaccines were recommended by CDC for use in the United States. As of October 3, 2023, the 2023-2024 updated Novavax vaccine was recommended for use in the United States.

2022-2023 Bivalent Vaccines

The 2022-2023 bivalent vaccines were designed to protect against both the original virus that causes COVID-19 and the Omicron variants BA.4 and BA.5. Two COVID-19 vaccine manufacturers, Pfizer-BioNTech and Moderna, had developed bivalent COVID-19 vaccines. As of September 11, 2023, the bivalent Pfizer-BioNTech and Moderna COVID-19 vaccines are no longer available for use in the United States.

Original Vaccines

Previous COVID-19 vaccines were called “original” because they were designed to protect against the original virus that causes COVID-19. As of April 18, 2023, the original Pfizer-BioNTech and Moderna COVID-19 vaccines are no longer available for use in the United States. As of May 6, 2023, J&J/Janssen COVID-19 vaccine is no longer available for use in the United States.

Examples: Up to date with COVID-19 Vaccines (Quarter 2 and Quarter 3 of 2024)

Examples	Is this individual considered up to date for COVID-19 Vaccination Modules for Quarter 2 and Quarter 3 of 2024 (April 1, 2024 – September 29, 2024)?	Is this individual included in the up to date category for RIFC Pathway for Quarter 2 and Quarter 3 of 2024 (April 1, 2024 – September 29, 2024)? <i>Note: This column is only applicable for Long-Term Care Facilities.</i>
<ul style="list-style-type: none"> Mary, a healthcare worker, is less than 65 years of age. She received 2 doses of the original Moderna COVID-19 vaccine. Mary received a dose of the bivalent COVID-19 vaccine. 	<p>No, Mary is not up to date with COVID-19 vaccines when reporting to COVID-19 Vaccination Modules because she has not yet received the 2023-2024 updated COVID-19 vaccine.</p> <p>Mary would be counted in the following category:</p>	<p>No, Mary is a healthcare worker; therefore, she would not be included in the RIFC pathway. Also, the Staff and Personnel Impact pathway of the COVID-19 Surveillance Pathways does not collect vaccination status on newly positive SARS-CoV-2 HCP.</p>



COVID-19 Vaccination Modules: Key Terms

<ul style="list-style-type: none"> Mary tested positive for COVID-19 five days ago. 	<ul style="list-style-type: none"> Question 3.3: Unknown/other COVID-19 vaccination status 	
<ul style="list-style-type: none"> Tom, a nursing home resident, is over 65 years of age. He received 2 doses of the original Pfizer COVID-19 vaccine. Tom received a dose of the bivalent COVID-19 vaccine 8 months ago. Tom received a 2023-2024 updated COVID-19 vaccine this month. Tom tested positive for COVID-19 3 weeks after receiving the 2023-2024 updated COVID-19 vaccine. 	<p>Yes, Tom is up to date with COVID-19 vaccines when reporting to COVID-19 Vaccination Modules because he received a 2023-2024 updated COVID-19 vaccine within the past four months.</p> <p>Tom would be counted in the following category:</p> <ul style="list-style-type: none"> Question 2: Up to date with COVID-19 vaccines 	<p>Yes, Tom is included in the Up to date category for RIFC because he received a 2023-2024 updated COVID-19 vaccine 14 days or more before he tested positive for COVID-19.</p> <p>Tom would be counted in the following categories for RIFC:</p> <ul style="list-style-type: none"> Positive Tests Up to Date

COVID-19 Vaccination Modules: Key Terms

<ul style="list-style-type: none"> Jackie is a 77- year-old nursing home resident. Jackie received a 2023-2024 updated COVID-19 vaccine on 10/30/23. Jackie tested positive for COVID-19 in April 2024. Jackie was transferred to the ER, but was not admitted to the hospital. 	<p>No, Jackie is not up to date when reporting to COVID-19 Vaccination Modules since she is over the age of 65 and received only one dose of the 2023-2024 updated COVID-19 vaccine over four months ago.</p> <p>Jackie would be counted in the following category:</p> <ul style="list-style-type: none"> Unknown/other COVID-19 vaccination status 	<p>No, Jackie is not included in the Up to date category for RIFC because she is over the age of 65 and received only one dose of the 2023-2024 updated COVID-19 vaccine over 4 months before testing positive for COVID-19.</p> <p>Jackie would be counted in the following categories for RIFC:</p> <ul style="list-style-type: none"> Positive Tests Not Up to date (auto-populated by the system) <p>*Jackie is NOT included in either hospitalizations categories because she was not admitted to the hospital (only transferred to the ED, but not admitted).</p>
--	--	---



<ul style="list-style-type: none"> Frank, a nursing home resident, is over 65 years of age. Frank declined to receive the 2023-2024 updated COVID-19 vaccine. Frank tested positive for COVID-19 2 days ago. 	<p>No, Frank is not up to date with COVID-19 vaccines when reporting to COVID-19 Vaccination Modules because he did not receive a 2023-2024 updated COVID-19 vaccine.</p> <p>Frank would be counted in the following category:</p> <ul style="list-style-type: none"> Question 3.2: Declined vaccination 	<p>No, Frank is not included in the Up to date category for RIFC because he has not yet received a 2023-2024 updated COVID-19 vaccine.</p> <p>Frank would be counted in the following categories for RIFC:</p> <ul style="list-style-type: none"> Positive Tests Not Up to date (auto-populated by the system)
<ul style="list-style-type: none"> Sandy, a healthcare worker, is less than 65 years of age. Sandy received a 2023-2024 updated COVID-19 vaccine five months ago. Sandy has not tested positive for COVID-19. 	<p>Yes, Sandy is up to date with COVID-19 vaccines when reporting to COVID-19 Vaccination Modules because she is less than 65 years of age and has received a 2023- 2024 updated COVID-19 vaccine.</p> <p>Sandy would be counted in the following category:</p> <ul style="list-style-type: none"> Question 2: Up to date with COVID-19 vaccines. 	<p>No, Sandy is a healthcare worker; therefore, she would not be included in the RIFC pathway. Also, the Staff and Personnel Impact pathway of the COVID-19 Surveillance Pathways does not collect vaccination status on newly positive SARS-CoV-2 HCP.</p>
<ul style="list-style-type: none"> Jane, a nursing home resident, is over 65 years of age. She only received the first dose of the original Pfizer-BioNTech COVID-19 vaccine. She declined to receive any other vaccine doses. Jane has not tested positive for COVID-19. 	<p>No, Jane is not up to date with COVID-19 vaccines when reporting to COVID-19 Vaccination Modules because she has not yet received a 2023-2024 updated COVID-19 vaccine.</p> <p>Jane would be counted in the following category:</p> <ul style="list-style-type: none"> Question 3.2: Declined vaccination 	<p>No, Jane does not have a newly positive COVID-19 test; therefore, she would not be included in the RIFC pathway at this time.</p>

COVID-19 Vaccination Modules: Key Terms

<ul style="list-style-type: none"> Isaac, a healthcare worker, is less than 65 years of age. Isaac received a bivalent COVID-19 vaccine on May 1, 2024. 	<p>No, Isaac is not up to date with COVID-19 vaccines when reporting to COVID-19 Vaccination Modules because he has not received a 2023-2024 updated COVID-19 vaccine.</p> <p>Isaac would be counted in the following categories:</p> <ul style="list-style-type: none"> Question 3.3: Unknown/other COVID-19 vaccination status 	<p>No, Isaac is a healthcare worker; therefore, he would not be included in the RIFC pathway. Also, the Staff and Personnel Impact pathway of the COVID-19 Surveillance Pathways does not collect vaccination status on newly positive SARS-CoV-2 HCP.</p>
<ul style="list-style-type: none"> Jerry, a healthcare worker, is 65 years of age. He received a 2023-2024 updated COVID-19 vaccine on September 14, 2023. 	<p>No, Jerry is not up to date with COVID-19 vaccines when reporting to COVID-19 Vaccination Modules because it has been more than four months since he received the 2023-2024 updated COVID-19 vaccine, and he has not received any other doses of the 2023-2024 updated COVID-19 vaccine since then.</p> <p>Jerry would be counted in the following categories:</p> <ul style="list-style-type: none"> Question 3.3: Unknown/other COVID-19 vaccination status 	<p>No, Jerry is a healthcare worker; therefore, would not be included in the RIFC pathway. Also, the Staff and Personnel Impact pathway of the COVID-19 Surveillance Pathways does not collect vaccination status on newly positive SARS-CoV-2 HCP.</p>
<ul style="list-style-type: none"> Helen, a healthcare worker, is over 65 years of age. Helen received a 2023-2024 updated COVID-19 vaccine one month ago. Helen tested positive for COVID-19 one week ago. 	<p>Helen is considered up to date when reporting to COVID-19 Vaccination Modules because she received a 2023-2024 updated COVID-19 vaccine less than four months ago.</p> <p>Helen would be counted in the following categories:</p> <ul style="list-style-type: none"> Question 2: Up to date with COVID-19 vaccines 	<p>No, Helen is a healthcare worker; therefore, she would not be included in the RIFC pathway. Also, the Staff and Personnel Impact pathway of the COVID-19 Surveillance Pathways does not collect vaccination status on newly positive SARS-CoV-2 HCP.</p>

COVID-19 Vaccination Modules: Key Terms

<ul style="list-style-type: none"> • Rachel, a nursing home resident, is over 65 years of age. • Rachel has not received any prior COVID-19 vaccines. • Rachel reported a medical contraindication that prevents her from receiving the 2023-2024 updated COVID-19 vaccine. 	<ul style="list-style-type: none"> • Rachel is not considered up to date when reporting to COVID-19 Vaccination Modules because she has a medical contraindication that prevents her from receiving the 2023-2024 updated COVID-19 vaccine. • Rachel would be counted in the following categories: Question 3.1: Medical contraindication 	<p>No, Rachel does not have a newly positive COVID-19 test; therefore, she would not be included in the RIFC pathway at this time.</p>
<ul style="list-style-type: none"> • Sam, a nursing home resident, is 81 years of age. • Sam received a dose of 2023-2024 updated COVID-19 vaccine on September 30, 2023 and she received a second dose of 2023-2024 updated COVID-19 vaccine and March 15, 2024. • Sam tested positive for COVID-19 on April 15, 2024 and was admitted to the hospital on April 16, 2024. 	<p>Sam is considered up to date when reporting to COVID-19 Vaccination Modules because she is over 65 years of age and received two doses of the 2023-2024 updated COVID-19 vaccine.</p> <p>Sam would be counted in the following category:</p> <ul style="list-style-type: none"> • Question 2: Up to date with COVID-19 vaccines 	<p>Yes, Sam is included in the Up to date category for RIFC because she received a second dose of 2023-2024 updated COVID-19 vaccine more than 14 days prior to testing positive for COVID-19.</p> <p>Sam would be counted in the following categories for RIFC:</p> <ul style="list-style-type: none"> • Positive Tests • Up to Date • Hospitalizations with a Positive COVID-19 Test • Hospitalizations with a Positive COVID-19 Test and Up to Date <p>*Sam is included in both hospitalizations categories because she had a newly positive COVID-19 test in the 10 days prior to hospitalization and was considered Up to date 14 days or more before the specimen collection of the positive test.</p>

Reporting Period: Quarter 1 2024 (January 1, 2024 – March 31, 2024)

The following definitions apply when reporting data through the **NHSN COVID-19 Vaccination Modules and the Resident Impact and Facility Capacity (RIFC) Pathway** for the reporting period of Quarter 1 2024 (representing data for **January 1, 2024 – March 31, 2024**).

Individuals are considered Up to date with their COVID-19 vaccines during the surveillance period of January 1, 2024 through March 31, 2024 for the purpose of NHSN surveillance if they meet the following criteria:*

Received a 2023-2024 Updated COVID-19 Vaccine

* As of September 12, 2023, the 2023-2024 updated Pfizer-BioNTech and Moderna COVID-19 vaccines were recommended by CDC for use in the United States. As of October 3, 2023, the 2023-2024 updated Novavax vaccine was recommended for use in the United States. The 2023-2024 updated COVID-19 vaccine more closely targets the XBB lineage of the Omicron variant and could restore protection against severe COVID-19 that may have decreased over time. Please see [Stay Up to date with COVID-19 Vaccines](#) for further details.

For the **Long-Term Care Facility Resident Impact and Facility Capacity (RIFC) Pathway** (part of the COVID-19 Surveillance Pathways: Resident Impact and Facility Capacity and Staff and Personnel Impact) only: A resident with a newly positive SARS-CoV-2 viral test result and has received a 2023-2024 updated COVID-19 vaccine should be counted in the Up to date category if the most recent dose was received 14 days or more before the specimen collection of the newly positive test result. In other words, for the RIFC Pathway, a resident with a newly positive SARS-CoV-2 test result is counted in the Up to date category if they received the vaccines required to be Up to date at least 14 days before the positive test.

Please see examples in the table below as well as Appendix 1a and 1b for additional information.

Examples: Up to date with COVID-19 Vaccines (Quarter 1, 2024)

Example	Is this individual considered Up to date for COVID-19 Vaccination Modules for Quarter 1 2024 (January 1, 2024 – March 31, 2024)?	Is this individual included in the Up to date category for RIFC Pathway for Quarter 1 2024 (January 1, 2024 – March 31, 2024)? <i>Note: This column is only applicable for Long-Term Care Facilities.</i>
<ul style="list-style-type: none"> Mary, a healthcare worker, received 2 doses of the original Moderna COVID-19 vaccine. Mary received a dose of the bivalent COVID-19 vaccine 5 months ago. 	<p>No, Mary is not up to date with COVID-19 vaccines when reporting to COVID-19 Vaccination Modules because she has not yet received the 2023-2024 updated COVID-19 vaccine.</p> <p>Mary would be counted in the following category:</p>	<p>No, Mary is a healthcare worker; therefore, she would not be included in the RIFC pathway. Also, the Staff and Personnel Impact pathway of the COVID-19 Surveillance Pathways does not collect vaccination status on newly positive SARS-CoV-2 HCP.</p>
<ul style="list-style-type: none"> Mary tested positive for COVID-19 five days ago. 	<ul style="list-style-type: none"> Question 3.3: Unknown/other COVID-19 vaccination status 	
<ul style="list-style-type: none"> Tom, a nursing home resident, received 2 doses of the original Pfizer COVID-19 vaccine. Tom received a dose of the bivalent COVID-19 vaccine 6 months ago. Tom received a 2023-2024 updated COVID-19 vaccine this month. Tom tested positive for COVID-19 2 days ago. 	<p>Yes, Tom is up to date with COVID-19 vaccines when reporting to COVID-19 Vaccination Modules because he received a 2023-2024 updated COVID-19 vaccine.</p> <p>Tom would be counted in the following category:</p> <ul style="list-style-type: none"> Question 2: Up to date with COVID-19 vaccines 	<p>Yes, Tom is included in the Up to date category for RIFC because he received a 2023-2024 updated COVID-19 vaccine 14 days or more before he tested positive for COVID-19.</p> <p>Tom would be counted in the following categories for RIFC:</p> <ul style="list-style-type: none"> Positive Tests Up to Date
<ul style="list-style-type: none"> Jackie, a 77- year-old nursing home resident, received 2 	<p>Yes, Jackie is up to date with COVID- 19 vaccines when reporting to COVID-19 Vaccination</p>	<p>No, Jackie is not included in the Up to date category for RIFC because she received the 2023-2024 updated</p>

COVID-19 Vaccination Modules: Key Terms

<p>doses of the original Moderna COVID-19 vaccine.</p> <ul style="list-style-type: none"> Jackie received one additional dose of the original Moderna COVID-19 vaccine due to being severely immunocompromised, a bivalent vaccine 8 months ago, and an additional bivalent dose on 9/1/2023. Jackie received a 2023-2024 updated COVID-19 vaccine on 11/30/23. Jackie tested positive for COVID-19 4 days after she received the 2023-2024 updated COVID-19 vaccine. Jackie was transferred to the ER, but was not admitted to the hospital. 	<p>Modules because she received a 2023-2024 updated COVID-19 vaccine.</p> <p>Jackie would be counted in the following category:</p> <ul style="list-style-type: none"> Question 2: Up to date with COVID-19 vaccines 	<p>COVID-19 vaccine dose only 4 days before testing positive for COVID-19.</p> <p>Jackie would be counted in the following categories for RIFC:</p> <ul style="list-style-type: none"> Positive Tests Not Up to date (auto-populated by the system) <p>*Jackie is NOT included in either hospitalizations categories because she did NOT have a newly positive COVID-19 test in the 10 days prior to hospitalization.</p>
<ul style="list-style-type: none"> Frank, a nursing home resident, received 2 doses of bivalent vaccine, with the last dose received 5 months ago. Frank declined to receive the 2023-2024 updated COVID-19 vaccine. Frank tested positive for COVID-19 2 days ago. 	<p>No, Frank is not Up to date with COVID-19 vaccines when reporting to COVID-19 Vaccination Modules because he did not receive a 2023-2024 updated COVID-19 vaccine.</p> <p>Frank would be counted in the following category:</p> <ul style="list-style-type: none"> Question 3.2: Declined vaccination 	<p>No, Frank is not included in the Up to date category for RIFC because he has not yet received a 2023-2024 updated COVID-19 vaccine and it has been more than 2 months since he received the bivalent vaccine.</p> <p>Frank would be counted in the following categories for RIFC:</p> <ul style="list-style-type: none"> Positive Tests Not Up to date (auto-populated by the system)

<ul style="list-style-type: none"> Sandy, a healthcare worker, received 2 doses of original Pfizer COVID-19 vaccine with the last dose received 12 months ago. Sandy received a 2023-2024 updated COVID-19 vaccine this month. Sandy has not tested positive for COVID-19. 	<p>Yes, Sandy is up to date with COVID-19 vaccines when reporting to COVID-19 Vaccination Modules because she has received a 2023-2024 updated COVID-19 vaccine.</p> <p>Sandy would be counted in the following category:</p> <ul style="list-style-type: none"> Question 2: Up to date with COVID-19 vaccines. 	<p>No, Sandy is a healthcare worker; therefore, she would not be included in the RIFC pathway. Also, the Staff and Personnel Impact pathway of the COVID-19 Surveillance Pathways does not collect vaccination status on newly positive SARS-CoV-2 HCP.</p>
<ul style="list-style-type: none"> Jane, a nursing home resident, only received the first dose of the original Pfizer-BioNTech COVID-19 vaccine. She declined to receive any other doses. Jane has not tested positive for COVID-19. 	<p>No, Jane is not up to date with COVID-19 vaccines when reporting to COVID-19 Vaccination Modules because she has not yet received a 2023-2024 updated COVID-19 vaccine.</p> <p>Jane would be counted in the following category:</p> <ul style="list-style-type: none"> Question 3.2: Declined vaccination 	<p>No, Jane does not have a newly positive COVID-19 test; therefore, she would not be included in the RIFC pathway at this time.</p>
<ul style="list-style-type: none"> Isaac, a healthcare worker, received the first dose of the original Pfizer-BioNTech COVID-19 vaccine. Isaac received a bivalent COVID-19 vaccine on May 1, 2024. 	<p>No, Isaac is not up to date with COVID-19 vaccines when reporting to COVID-19 Vaccination Modules because he has not received a 2023-2024 updated COVID-19 vaccine.</p> <p>Isaac would be counted in the following categories:</p> <ul style="list-style-type: none"> Question 3.3: Unknown/other COVID-19 vaccination status 	<p>No, Isaac is a healthcare worker; therefore, he would not be included in the RIFC pathway. Also, the Staff and Personnel Impact pathway of the COVID-19 Surveillance Pathways does not collect vaccination status on newly positive SARS-CoV-2 HCP.</p>

<ul style="list-style-type: none"> Jerry, a healthcare worker, received a 2023-2024 updated COVID-19 vaccine on September 14. He had not received any prior COVID-19 vaccines. 	<p>Yes, Jerry is Up to date with COVID-19 vaccines when reporting to COVID-19 Vaccination Modules because he received a 2023-2024 updated COVID-19 vaccine.</p> <p>Jerry would be counted in the following categories:</p> <ul style="list-style-type: none"> Question 2: Up to date with COVID-19 vaccines 	<p>No, Jerry is a healthcare worker; therefore, would not be included in the RIFC pathway. Also, the Staff and Personnel Impact pathway of the COVID-19 Surveillance Pathways does not collect vaccination status on newly positive SARS-CoV-2 HCP.</p>
<ul style="list-style-type: none"> Helen, a healthcare worker, completed her original COVID-19 vaccine series and received 2 original boosters. Helen received a 2023-2024 updated COVID-19 vaccine on September 13. Helen tested positive for COVID-19 on September 11. 	<p>Helen is considered up to date when reporting to COVID-19 Vaccination Modules because she received a 2023-2024 updated COVID-19 vaccine.</p> <p>Helen would be counted in the following categories:</p> <ul style="list-style-type: none"> Question 2: Up to date with COVID-19 vaccines 	<p>No, Helen is a healthcare worker; therefore, she would not be included in the RIFC pathway. Also, the Staff and Personnel Impact pathway of the COVID-19 Surveillance Pathways does not collect vaccination status on newly positive SARS-CoV-2 HCP.</p>

COVID-19 Vaccination Modules: Key Terms

<ul style="list-style-type: none"> Sam, a nursing home resident, completed her original COVID-19 vaccination series and received 2 original boosters prior to receiving a bivalent vaccine dose. Sam received a 2023-2024 updated COVID-19 vaccine on September 15. Sam tested positive for COVID-19 on October 15 and was admitted to the hospital on October 16. 	<p>Sam is considered up to date when reporting to COVID-19 Vaccination Modules because she received a 2023-2024 updated COVID-19 vaccine.</p> <p>Sam would be counted in the following category:</p> <ul style="list-style-type: none"> Question 2: Up to date with COVID-19 vaccines 	<p>Yes, Sam is included in the Up to date category for RIFC because she received a 2023-2024 updated COVID-19 vaccine more than 14 days prior to testing positive for COVID-19.</p> <p>Sam would be counted in the following categories for RIFC:</p> <ul style="list-style-type: none"> Positive Tests Up to Date Hospitalizations with a Positive COVID-19 Test Hospitalizations with a Positive COVID-19 Test and Up to Date <p>*Sam is included in both hospitalizations categories because she had a newly positive COVID-19 test in the 10 days prior to hospitalization and was considered Up to date 14 days or more before the specimen collection of the positive test.</p>
--	---	---

COVID-19 Vaccination Modules: Key Terms

Reporting Period: Quarter 4 2023 (September 25, 2023 – December 31, 2023)
 The following definitions apply when reporting data through the **NHSN COVID-19 Vaccination Modules and the Resident Impact and Facility Capacity (RIFC) Pathway** for the reporting period of Quarter 4 2023 (representing data for September 25, 2023 – December 31, 2023).

Individuals are considered Up to date with their COVID-19 vaccines during the surveillance period of September 25, 2023 through December 31, 2023 for the purpose of NHSN surveillance if they meet (1) of the following criteria:*

Received a 2023-2024 Updated COVID-19 Vaccine

or

**Received bivalent COVID-19 vaccine within the last 2 months

* As of September 12, 2023, the 2023-2024 updated Pfizer-BioNTech and Moderna COVID-19 vaccines were recommended by CDC for use in the United States. The 2023-2024 updated COVID-19 vaccine more closely targets the XBB lineage of the Omicron variant and could restore protection against severe COVID-19 that may have decreased over time. Individuals are also considered Up to date if they received a bivalent vaccine or a Novavax vaccine within the last 2 months, or if they received a Novavax vaccine after completing a primary series. Please see [Stay Up to date with COVID-19 Vaccines](#) for further details.

**As of 9/12/2023, the bivalent COVID-19 vaccines are no longer FDA-authorized.

For the Long-Term Care Facility Resident Impact and Facility Capacity (RIFC) Pathway (part of the COVID-19 Surveillance Pathways: Resident Impact and Facility Capacity and Staff and Personnel Impact) only: A resident with a newly positive SARS-CoV-2 viral test result and has received the 2023-2024 updated COVID-19 vaccine or has received the COVID-19 bivalent vaccine in the last 2 months should be counted in the Up to date category if the most recent dose was received 14 days or more before the specimen collection of the newly positive test result. In other words, for the RIFC Pathway, a resident with a newly positive SARS-CoV-2 test result is counted in the Up to date category if they received the vaccines required to be Up to date at least 14 days before the positive test.

Please see examples in the table below as well as Appendix 1a and 1b for additional information.



Primary vaccine series for healthcare workers (Applies ONLY to HCP Form for Quarter 4 2023)

Completing a primary vaccine series means receiving:

- A 2-dose series of an original COVID-19 vaccine (Pfizer-BioNTech, Moderna, Novavax) **OR**
- A single dose of Janssen COVID-19 vaccine **OR**
- A single dose of bivalent vaccine **OR**
- A single dose of 2023-2024 updated COVID-19 vaccine

2023-2024 Updated COVID-19 Vaccine

The 2023-2024 updated COVID-19 vaccine more closely targets the XBB lineage of the [Omicron variant](#) and could restore protection against severe COVID-19 that may have decreased over time. As of September 12, 2023, the 2023-2024 updated Pfizer-BioNTech and Moderna COVID-19 vaccines were recommended by CDC for use in the United States.

2022-2023 Bivalent Vaccines

The 2022-2023 bivalent vaccines were designed to protect against **both** the original virus that causes COVID-19 **and** the Omicron variants BA.4 and BA.5. Two COVID-19 vaccine manufacturers, Pfizer-BioNTech and Moderna, had developed bivalent COVID-19 vaccines. As of September 11, 2023, the bivalent Pfizer-BioNTech and Moderna COVID-19 vaccines are no longer available for use in the United States.

Original Vaccines

Previous COVID-19 vaccines were called “original” because they were designed to protect against the original virus that causes COVID-19. As of April 18, 2023, the original Pfizer-BioNTech and Moderna COVID-19 vaccines are no longer available for use in the United States. As of May 6, 2023, J&J/Janssen COVID-19 vaccine is no longer available for use in the United States.

COVID-19 Vaccination Modules: Key Terms

Examples: Up to date with COVID-19 Vaccines (Quarter 4, 2023)

Example	Is this individual considered Up to date for COVID-19 Vaccination Modules for Quarter 4 2023 (September 25, 2023 - December 31, 2023)?	Is this individual included in the Up to date category for RIFC Pathway for Quarter 4 2023 (September 25, 2023 - December 31, 2023)? <i>Note: This column is only applicable for Long-Term Care Facilities.</i>
<ul style="list-style-type: none"> Mary, a healthcare worker, received 2 doses of the original Moderna COVID-19 vaccine. Mary received a dose of the bivalent COVID-19 vaccine 4 months ago. 	<p>No, Mary is not Up to date with COVID-19 vaccines when reporting to COVID-19 Vaccination Modules because she has not yet received the 2023-2024 updated COVID-19 vaccine.</p> <p>As a healthcare worker, Mary would only be counted in the following category:</p>	<p>No, Mary is a healthcare worker; therefore, she would not be included in the RIFC pathway. Also, the Staff and Personnel Impact pathway of the COVID-19 Surveillance Pathways does not collect vaccination status on newly positive SARS-CoV-2 HCP.</p>
<ul style="list-style-type: none"> Mary tested positive for COVID-19 five days ago. 	<ul style="list-style-type: none"> Question 2: Any completed primary COVID-19 vaccination series 	
<ul style="list-style-type: none"> Tom, a nursing home resident, received 2 doses of the original Pfizer COVID-19 vaccine. Tom received a dose of the bivalent COVID-19 vaccine 6 months ago. Tom received a 2023-2024 updated COVID-19 vaccine this month. Tom tested positive for COVID-19 2 days ago. 	<p>Yes, Tom is Up to date with COVID-19 vaccines when reporting to COVID-19 Vaccination Modules because he received a 2023-2024 updated COVID-19 vaccine.</p> <p>Tom would be counted in the following category:</p> <ul style="list-style-type: none"> Question 2: Up to date with COVID-19 vaccines 	<p>Yes, Tom is included in the Up to date category for RIFC because he received a 2023-2024 updated COVID-19 vaccine 14 days or more before he tested positive for COVID-19.</p> <p>Tom would be counted in the following categories for RIFC:</p> <ul style="list-style-type: none"> Positive Tests Up to Date

COVID-19 Vaccination Modules: Key Terms

<ul style="list-style-type: none"> Jackie, a 77- year-old nursing home resident, received 2 doses of the original Moderna COVID-19 vaccine. Jackie received one additional dose of the original Moderna COVID-19 vaccine due to being severely immunocompromised, a bivalent vaccine 8 months ago, and an additional bivalent dose on 9/1/2023. Jackie tested positive for COVID-19 4 days after she received the second bivalent vaccine. Jackie was transferred to the ER, but was not admitted to the hospital. 	<p>Yes, Jackie is Up to date with COVID-19 vaccines when reporting to COVID-19 Vaccination Modules because she received a bivalent vaccine in the last 2 months.</p> <p>Jackie would be counted in the following category:</p> <ul style="list-style-type: none"> Question 2: Up to date with COVID-19 vaccines <p>* Jackie will need to receive the 2023-2024 updated COVID-19 vaccine 2 months after 9/1/2023 to continue to be considered UTD.</p>	<p>No, Jackie is not included in the Up to date category for RIFC because she received a bivalent COVID-19 vaccine dose only 4 days before testing positive for COVID-19.</p> <p>Jackie would be counted in the following categories for RIFC:</p> <ul style="list-style-type: none"> Positive Tests Not Up to date (auto-populated by the system) <p>*Jackie is NOT included in either hospitalizations categories because she did NOT have a newly positive COVID-19 test in the 10 days prior to hospitalization.</p>
<ul style="list-style-type: none"> Frank, a nursing home resident, received 2 doses of bivalent vaccine, with the last dose received 5 months ago. Frank declined to receive the 2023-2024 updated COVID-19 vaccine. Frank tested positive for COVID-19 2 days ago. 	<p>No, Frank is not Up to date with COVID-19 vaccines when reporting to COVID-19 Vaccination Modules because he did not receive a 2023-2024 updated COVID-19 vaccine and his last dose of bivalent vaccine was more than 2 months ago.</p> <p>Frank would be counted in the following category:</p> <ul style="list-style-type: none"> Question 3.2: Declined vaccination 	<p>No, Frank is not included in the Up to date category for RIFC because he has not yet received a 2023-2024 updated COVID-19 vaccine and it has been more than 2 months since he received the bivalent vaccine.</p> <p>Frank would be counted in the following categories for RIFC:</p> <ul style="list-style-type: none"> Positive Tests Not Up to date (auto-populated by the system)

COVID-19 Vaccination Modules: Key Terms

<ul style="list-style-type: none"> Sandy, a healthcare worker, received 2 doses of original Pfizer COVID-19 vaccine with the last dose received 12 months ago. Sandy received a 2023-2024 updated COVID-19 vaccine this month. Sandy has not tested positive for COVID-19. 	<p>Yes, Sandy is Up to date with COVID-19 vaccines when reporting to COVID-19 Vaccination Modules because she has received a 2023-2024 updated COVID-19 vaccine.</p> <p>Sandy would be counted in the following categories:</p> <ul style="list-style-type: none"> Question 2: Any completed primary COVID-19 vaccination series. Question 4: Up to date with COVID-19 vaccines. 	<p>No, Sandy is a healthcare worker; therefore, she would not be included in the RIFC pathway.</p>
<ul style="list-style-type: none"> Jane, a nursing home resident, only received the first dose of the original Pfizer-BioNTech COVID-19 vaccine. She declined to receive any other doses. Jane has not tested positive for COVID-19. 	<p>No, Jane is not Up to date with COVID-19 vaccines when reporting to COVID-19 Vaccination Modules because she has not yet received a 2023-2024 updated COVID-19 vaccine.</p> <p>Jane would be counted in the following category:</p> <ul style="list-style-type: none"> Question 3.2: Declined vaccination 	<p>No, Jane does not have a newly positive COVID-19 test; therefore, she would not be included in the RIFC pathway at this time.</p>
<ul style="list-style-type: none"> Isaac, a healthcare worker, received the first dose of the original Pfizer-BioNTech COVID-19 vaccine. Isaac received a bivalent COVID-19 vaccine on May 1. 	<p>No, Isaac is Up to date with COVID-19 vaccines when reporting to COVID-19 Vaccination Modules because he has not received a 2023-2024 updated COVID-19 vaccine, and his bivalent dose was more than 2 months ago.</p> <p>Isaac would be counted in the following categories:</p> <ul style="list-style-type: none"> Question 2: Any completed primary COVID-19 vaccination series 	<p>No, Isaac is a healthcare worker; therefore, he would not be included in the RIFC pathway.</p>

COVID-19 Vaccination Modules: Key Terms

<ul style="list-style-type: none"> Jerry, a healthcare worker, received a 2023-2024 updated COVID-19 vaccine on September 14. He had not received any prior COVID-19 vaccines. 	<p>Yes, Jerry is Up to date with COVID-19 vaccines when reporting to COVID-19 Vaccination Modules because he received a 2023-2024 updated COVID-19 vaccine.</p> <p>Jerry would be counted in the following categories:</p> <ul style="list-style-type: none"> Question 2: Any completed primary COVID-19 vaccination series Question 4: Up to date with COVID-19 vaccines 	<p>No, Jerry is a healthcare worker; therefore, would not be included in the RIFC pathway.</p>
<ul style="list-style-type: none"> Helen, a healthcare worker, completed her original COVID-19 vaccine series and received 2 original boosters. Helen received a 2023-2024 updated COVID-19 vaccine on September 13. Helen tested positive for COVID-19 on September 11. 	<p>Helen is considered Up to date when reporting to COVID-19 Vaccination Modules because she received a 2023-2024 updated COVID-19 vaccine.</p> <p>Helen would be counted in the following categories:</p> <ul style="list-style-type: none"> Question 2: Any completed primary COVID-19 vaccination series Question 4: Up to date with COVID-19 vaccines 	<p>No, Helen is a healthcare worker; therefore, she would not be included in the RIFC pathway. Also, the Staff and Personnel Impact pathway of the COVID-19 Surveillance Pathways does not collect vaccination status on newly positive SARS-CoV-2 HCP.</p>

COVID-19 Vaccination Modules: Key Terms

<ul style="list-style-type: none"> Sam, a nursing home resident, completed her original COVID-19 vaccination series and received 2 original boosters prior to receiving a bivalent vaccine dose. Sam received a 2023-2024 updated COVID-19 vaccine on September 15. Sam tested positive for COVID-19 on October 15 and was admitted to the hospital on October 16. 	<p>Sam is considered Up to date when reporting to COVID-19 Vaccination Modules because she received a 2023-2024 updated COVID-19 vaccine.</p> <p>Sam would be counted in the following category:</p> <ul style="list-style-type: none"> Question 2: Up to date with COVID-19 vaccines 	<p>Yes, Sam is included in the Up to date category for RIFC because she received a 2023-2024 updated COVID-19 vaccine more than 14 days prior to testing positive for COVID-19.</p> <p>Sam would be counted in the following categories for RIFC:</p> <ul style="list-style-type: none"> Positive Tests Up to Date Hospitalizations with a Positive COVID-19 Test Hospitalizations with a Positive COVID-19 Test and Up to Date <p>*Sam is included in both hospitalizations categories because she had a newly positive COVID-19 test in the 10 days prior to hospitalization and was considered Up to date 14 days or more before the specimen collection of the positive test.</p>
--	---	---

Reporting Period: Quarter 3 2023 (June 26, 2023 through September 24, 2023)
 The following definitions apply when reporting data through the NHSN COVID-19 Vaccination Modules and the Resident Impact and Facility Capacity (RIFC) Pathway for the reporting period of Quarter 3 2023 (June 26, 2023 through September 24, 2023).

Up to date with COVID-19 vaccines

Individuals are considered Up to date with their COVID-19 vaccines during the surveillance period of June 26, 2023 – September 24, 2023 for the purpose of NHSN surveillance if they meet the following criteria:

Received an updated (bivalent)* vaccine(s)

* On April 18, 2023, the Food and Drug Administration (FDA) [announced](#) changes to its Emergency Use Authorization (EUA) regarding COVID-19 vaccines. Following this announcement, CDC simplified COVID-19 vaccine [recommendations](#).

* An individual is considered Up to date once they receive 1 updated bivalent Pfizer-BioNTech or bivalent Moderna COVID-19 vaccine. This is regardless of age, immunocompromised status, or if they received any prior monovalent COVID-19 vaccines.

Note: Up to date guidance for individuals aged 5 years and younger differs; please see [Stay Up to date with COVID-19 Vaccines](#) for details.

Note: For the **Long-Term Care Facility Resident Impact and Facility Capacity (RIFC) Pathway** (part of the COVID-19 Surveillance Pathways: Resident Impact and Facility Capacity and Staff and Personnel Impact) only: A resident with a newly positive SARS-CoV-2 viral test result who has received the updated bivalent vaccine should be counted in the Up to date category if the most recent dose was received 14 days or more before the specimen collection of the newly positive test result. In other words, for the RIFC Pathway, a resident with a newly positive SARS-CoV-2 test result is counted in the Up to date category if they received the vaccines required to be Up to date at least 14 days before the positive test.

*Please see examples in the table below as well as Appendix 1a for additional information

Primary vaccine series for healthcare workers (Applies ONLY to HCP Form for Quarter 3 2023)

Completing a primary vaccine series means receiving:

- A 2-dose series of a COVID-19 vaccine **OR**
- A single dose of Janssen COVID-19 vaccine **OR**
- A single dose of bivalent vaccine

Updated bivalent vaccine (applies to all NHSN surveillance during Quarter 3 2023)

Bivalent vaccines are updated Moderna and Pfizer-BioNTech vaccines that protect against both the ancestral strain of SARS-CoV-2 and the recent Omicron variants and subvariants. CDC first recommended these updated (bivalent) vaccines



COVID-19 Vaccination Modules: Key Terms

in early September 2022. The updated (bivalent) vaccines have now replaced the original (monovalent) Moderna and Pfizer-BioNTech vaccines.

Examples: Up to date with COVID-19 Vaccines (Quarter 3 2023)

Example	Is this individual considered Up to date for COVID-19 Vaccination Modules for Quarter 3 2023 (June 26, 2023 – September 24, 2023)?	Is this individual included in the Up to date category for RIFC Pathway for Quarter 3 2023 (June 26, 2023 – September 24, 2023)? <i>Note: This column is only applicable for Long-Term Care Facilities.</i>
<ul style="list-style-type: none"> Mary, a healthcare worker, received 2 doses of the Moderna COVID-19 vaccine. Mary received a first booster dose of the monovalent Moderna COVID-19 vaccine 12 months ago. Mary received a second booster dose of the monovalent Moderna COVID-19 vaccine 8 months ago. <p>Mary tested positive for COVID-19 five days ago.</p>	<p>No, Mary is not Up to date with COVID-19 vaccines when reporting to COVID-19 Vaccination Modules because she has not yet received an updated (bivalent) COVID-19 vaccine.</p> <p>As a healthcare worker, Mary would be counted in the following category: Question 2: Any completed primary COVID-19 vaccination series</p>	<p>No, Mary is not included in the Up to date category for RIFC because she has not yet received an updated (bivalent) COVID-19 vaccine.</p> <p>Mary would be counted in the following categories for RIFC</p> <ul style="list-style-type: none"> Positive Tests <p>Not Up to date (auto-populated by the system)</p>

COVID-19 Vaccination Modules: Key Terms

<ul style="list-style-type: none"> Tom, a nursing home resident, received 2 doses of the original monovalent Pfizer COVID-19 vaccine. Tom received one booster dose of the monovalent Moderna COVID-19 vaccine 7 months ago. Tom received an updated (bivalent) dose of COVID-19 vaccine 3 months ago Tom tested positive for COVID-19 2 days ago 	<p>Yes, Tom is Up to date with COVID-19 vaccines when reporting to COVID-19 Vaccination Modules because he received an updated (bivalent) vaccine.</p> <p>Tom would be counted in the following category:</p> <ul style="list-style-type: none"> Question 2: Up to date with COVID-19 vaccines 	<p>Yes, Tom is included in the Up to date category for RIFC because he received an updated (bivalent) vaccine 14 days or more before he tested positive for COVID-19.</p> <p>Tom would be counted in the following categories for RIFC</p> <ul style="list-style-type: none"> Positive Tests Up to Date
<ul style="list-style-type: none"> Jackie, a nursing home resident, received 2 doses of the original (monovalent) Moderna COVID-19 vaccine. Jackie received one additional dose of Moderna COVID-19 vaccine due to being severely immunocompromised, a booster dose of the original monovalent Moderna COVID- 	<p>Yes, Jackie is Up to date with COVID-19 vaccines when reporting to COVID-19 Vaccination Modules because she received an updated (bivalent) vaccine.</p> <p>Jackie would be counted in the following category:</p> <ul style="list-style-type: none"> Question 2: Up to date with COVID-19 vaccines 	<p>No, Jackie is not included in the Up to date category for RIFC because she received an updated (bivalent) COVID-19 booster dose only 4 days before testing positive for COVID-19.</p> <p>Jackie would be counted in the following categories for RIFC</p> <ul style="list-style-type: none"> Positive Tests Not Up to date (auto-populated by the system)

<p>19 vaccine, and an updated (bivalent) vaccine.</p> <ul style="list-style-type: none"> Jackie tested positive for COVID 19 4 days after she received the updated bivalent vaccine. 		
<ul style="list-style-type: none"> Frank, a dialysis patient, received 2 doses of Novavax vaccine with the last dose received one month ago. Frank tested positive 2 days ago 	<p>No, Frank is not Up to date with COVID-19 vaccines when reporting to COVID-19 Vaccination Modules because he has not received an updated (bivalent) vaccine.</p> <p>Frank would be counted in the following category:</p> <ul style="list-style-type: none"> Question 3.3: Unknown/other COVID-19 vaccination status 	<p>No, Frank is not included in the Up to date category for RIFC because he has not yet received an updated (bivalent) COVID-19 vaccine.</p> <p>Frank would be counted in the following categories for RIFC</p> <ul style="list-style-type: none"> Positive Tests Not Up to date (auto-populated by the system)
<ul style="list-style-type: none"> Sandy, a healthcare worker, received 2 doses of original (monovalent) Pfizer COVID-19 vaccine with the last dose received 4 months ago. Sandy has not tested positive for COVID-19 	<p>No, Sandy is not Up to date with COVID-19 vaccines when reporting to COVID-19 Vaccination Modules because has not yet received an updated (bivalent) COVID-19 vaccine.</p> <p>Sandy would be counted in the following category:</p> <ul style="list-style-type: none"> Question 2: Any completed primary COVID-19 vaccination series 	<p>No, Sandy is a healthcare worker therefore would not be included in the RIFC pathway.</p>

COVID-19 Vaccination Modules: Key Terms

<ul style="list-style-type: none"> Jane, a nursing home resident, only received the first dose of the original (monovalent) Pfizer-BioNTech COVID-19 vaccine. She declined to receive any other doses. Jane has not tested positive for COVID-19 	<p>No, Jane is not Up to date with COVID-19 vaccines when reporting to COVID-19 Vaccination Modules because she has not yet received an updated (bivalent) COVID-19 vaccine</p> <p>Jane would be counted in the following category:</p> <ul style="list-style-type: none"> Question 3.2: Declined 	<p>No, Jane does not have a newly positive COVID-19 test therefore would not be included in the RIFC pathway at this time.</p>
--	---	---

<ul style="list-style-type: none"> Isaac, a healthcare worker, received the first dose of the original (monovalent) Pfizer-BioNTech COVID-19 vaccine. Isaac received an updated (bivalent) dose on May 1 	<p>Yes, Isaac is Up to date with COVID-19 vaccines when reporting to COVID-19 Vaccination Modules because he received an updated (bivalent) vaccine.</p> <p>Isaac would be counted in the following categories:</p> <ul style="list-style-type: none"> Question 2: Any completed primary COVID-19 vaccination series Question 4: Up to date with COVID-19 vaccines 	<p>N/A; The Staff and Personnel Impact pathway of the COVID-19 Surveillance Pathways does not collect vaccination status on newly positive SARS-CoV-2 HCP</p>
<ul style="list-style-type: none"> Jerry, a healthcare worker, received an updated (bivalent) vaccine on May 1. He had not received any prior COVID-19 vaccines. 	<p>Yes, Jerry is Up to date with COVID-19 vaccines when reporting to COVID-19 Vaccination Modules because he received an updated (bivalent) vaccine.</p> <p>Jerry would be counted in the following categories:</p> <ul style="list-style-type: none"> Question 2: Any completed primary COVID-19 vaccination series Question 4: Up to date with COVID-19 vaccines 	<p>N/A; The Staff and Personnel Impact pathway of the COVID-19 Surveillance Pathways does not collect vaccination status on newly positive SARS-CoV-2 HCP</p>
<ul style="list-style-type: none"> Helen, a healthcare worker, completed her primary vaccination series and received 2 monovalent boosters Helen tested positive for COVID-19 on January 1st Helen received an updated (bivalent) vaccine on January 5th 	<p>As of January 5th, Helen is considered Up to date when reporting to COVID-19 Vaccination Modules because she received an updated (bivalent) vaccine.</p> <p>Helen would be counted in the following categories:</p> <ul style="list-style-type: none"> Question 2: Any completed primary COVID-19 vaccination series Question 4: Up to date with COVID-19 vaccines 	<p>No, Helen is not included in the Up to date category for RIFC because she tested positive prior to receiving the updated (bivalent) booster dose.</p> <p>Helen would be counted in the following categories for RIFC</p> <ul style="list-style-type: none"> Positive Tests Not Up to date (auto-populated by the system)

COVID-19 Vaccination Modules: Key Terms

<ul style="list-style-type: none"> Sam, a nursing home resident, completed her primary vaccination series and received 2 monovalent boosters prior to receiving the updated (bivalent) vaccine dose. Sam received the updated (bivalent) vaccine on February 1st Sam tested positive for COVID-19 on February 15th 	<p>As of February 1st, Sam is considered Up to date when reporting to COVID-19 Vaccination Modules because she received an updated (bivalent) vaccine.</p> <p>Sam would be counted in the following category:</p> <ul style="list-style-type: none"> Question 2: Up to date with COVID-19 vaccines 	<p>Yes, Sam is included in the Up to date category for RIFC because she received the updated (bivalent) booster more than 14 days prior to testing positive for COVID-19.</p> <p>Sam would be counted in the following categories for RIFC</p> <ul style="list-style-type: none"> Positive Tests Up to Date
--	---	---

COVID-19 Vaccination Modules: Key Terms

Reporting Period: Quarter 1 2023 (December 26, 2022 – March 26, 2023) and Quarter 2 2023 (March 27, 2023 – June 25, 2023)

The following definitions apply when reporting data through the **NHSN COVID-19 Vaccination Modules and the Resident Impact and Facility Capacity (RIFC) Pathway** for the reporting period of Quarter 1 2023 (representing data for **December 26, 2022 – March 26, 2023**) and Quarter 2 2023 (representing data for **March 27, 2023 – June 25, 2023**).

Up to date with COVID-19 vaccines (*Please note that changes beginning with Quarter 1 2023 are highlighted in yellow.*)

Individuals are considered Up to date with their COVID-19 vaccines during the surveillance period of December 26, 2022 – March 26, 2023 and March 27, 2023 – June 25, 2023 for the purpose of NHSN surveillance if they meet (1) of the following criteria:

Received an updated (bivalent)* booster dose , or
Completed their primary series less than 2 months ago

* The updated (bivalent) Moderna and Pfizer-BioNTech boosters target the most recent Omicron subvariants. The updated (bivalent) boosters were recommended by the CDC on 9/2/2022. As of this date, the original, monovalent mRNA vaccines were no longer authorized as booster doses for people ages 12 years and older. Therefore, as of Quarter 1 2023, monovalent boosters are no longer included in the Up to date definition.

Note: Up to date guidance for individuals aged 11 years and younger differs; please see [Stay Up to date with COVID-19 Vaccines Including Boosters](#) for details.

Note: the NHSN surveillance definition for Up to date is the same regardless of immunocompromised status.

Note: Although the Novavax monovalent booster is allowed for use for adults aged 18 and over, the criteria for Up to date COVID-19 vaccination status remain the same for Quarter 1 and 2 2023. In other words, individuals are only considered to be Up to date if they meet the criteria outlined in the table above.

Note: For **Long-Term Care Facility Resident Impact and Facility Capacity (RIFC) Pathway** (part of the COVID-19 Surveillance Pathways: Resident Impact and Facility Capacity, Staff and Personnel Impact, and Therapeutics) only: A resident with a newly positive SARS-CoV-2 viral test result who has received the updated (bivalent) booster dose or has completed the primary series (in the past 2 months) should be counted in the Up to date category if the most recent dose was received 14 days or more before the specimen collection of the newly positive test result. In other words, for the RIFC Pathway, a resident with a newly positive SARS-CoV-2 test result is counted in the Up to date category if they received the vaccines required to be Up to date at least 14 days before the positive test.

*Please see examples in the table below as well as Appendix 1a for additional information



Examples: Up to date with COVID-19 Vaccines (Quarter 1 and 2 2023)

Example	Is this individual considered Up to date for COVID-19 Vaccination Modules for Quarter 1 2023 (December 26, 2022 – March 26, 2023)?	Is this individual included in the Up to date category for RIFC Pathway for Quarter 1 2023 (December 26, 2022 – March 26, 2023)? <i>Note: This column is only applicable for Long-Term Care Facilities.</i>
<ul style="list-style-type: none"> Mary received 2 doses of the Moderna COVID-19 vaccine. Mary received a first booster dose of the monovalent Moderna COVID-19 vaccine 9 months ago. Mary received a second booster dose of the monovalent Moderna COVID-19 vaccine 4 months ago. Mary tested positive for COVID-19 five days ago. 	<p>No, Mary is not Up to date with COVID-19 vaccines when reporting to COVID-19 Vaccination Modules because she has not yet received an updated (bivalent) COVID-19 booster dose.</p>	<p>No, Mary is not included in the Up to date category for RIFC because she has not yet received an updated (bivalent) COVID-19 booster dose.</p> <p>Mary would be counted in the following categories</p> <ul style="list-style-type: none"> Positive test count Complete Primary Vaccination Series Additional or Booster Vaccination Two or More Boosters
<ul style="list-style-type: none"> Tom received 2 doses of the Pfizer COVID-19 vaccine. 	<p>Yes, Tom is Up to date with COVID-19 vaccines when reporting to COVID-19 Vaccination Modules because he</p>	<p>Yes, Tom is included in the Up to date category for RIFC because he received an updated (bivalent) booster dose 14</p>

<ul style="list-style-type: none"> Tom received one booster dose of the monovalent Moderna COVID-19 vaccine 7 months ago. Tom received an updated (bivalent) booster dose of COVID-19 vaccine 3 months ago Tom tested positive for COVID-19 2 days ago 	<p>received an updated (bivalent) booster dose.</p>	<p>days or more before he tested positive for COVID-19.</p> <p>Tom would be counted in the following categories</p> <ul style="list-style-type: none"> Positive test count Complete Primary Vaccination Series Additional or Booster Vaccination Two or More Boosters <ul style="list-style-type: none"> Moderna booster dose Bivalent Booster dose Up to date
<ul style="list-style-type: none"> Jackie received 2 doses of the Moderna COVID-19 vaccine. Jackie received one additional dose of Moderna COVID-19 vaccine due to being severely immunocompromised, a booster dose of the monovalent Moderna COVID-19 vaccine, and an updated (bivalent) booster dose. Jackie tested positive for COVID 19 4 days after she received the updated bivalent booster dose 	<p>Yes, Jackie is Up to date with COVID-19 vaccines when reporting to COVID-19 Vaccination Modules because she received an updated (bivalent) booster dose.</p>	<p>No, Jackie is not included in the Up to date category for RIFC because she received an updated (bivalent) COVID-19 booster dose only 4 days before testing positive for COVID-19.</p> <p>Jackie would be counted in the following categories</p> <ul style="list-style-type: none"> Positive test count Complete Primary Vaccination Series Additional or Booster Vaccination Two or More Boosters
<ul style="list-style-type: none"> Frank received 2 doses of Novavax vaccine with the last dose received one month ago. Frank tested positive 2 days ago 	<p>Yes, Frank is Up to date with COVID-19 vaccines when reporting to COVID-19 Vaccination Modules. He completed his primary vaccine series less than 2 months ago and is not yet eligible for an updated (bivalent) booster dose.</p>	<p>Yes, Frank is included in the Up to date category for RIFC. He completed his primary vaccine series less than 2 months ago and more than 14 days before he tested positive.</p> <p>Frank would be counted in the following categories for RIFC</p> <ul style="list-style-type: none"> Positive test count

COVID-19 Vaccination Modules: Key Terms

		<ul style="list-style-type: none"> Complete Primary Vaccination Series <p>Up to date</p>
<ul style="list-style-type: none"> Sandy received 2 doses of Pfizer COVID-19 vaccine with the last dose received 4 months ago. Sandy has not tested positive for COVID-19 	No, Sandy is not Up to date with COVID-19 vaccines when reporting to COVID-19 Vaccination Modules because she completed her primary series more than 2 months ago and has not yet received an updated (bivalent) COVID-19 booster dose.	No, Sandy does not have a newly positive COVID-19 test and would not be included in the RIFC pathway at this time.
<ul style="list-style-type: none"> Jane only received the first dose of the Pfizer-BioNTech COVID-19 vaccine. Jane has not tested positive for COVID-19 	No, Jane is not Up to date with COVID-19 vaccines when reporting to COVID-19 Vaccination Modules because she did not receive all recommended doses in the primary vaccine series.	No, Jane does not have a newly positive COVID-19 test and would not be included in the RIFC pathway at this time.
<ul style="list-style-type: none"> Helen completed her primary vaccination Series and received 2 monovalent boosters prior to receiving the updated bivalent booster dose. Helen tested positive for COVID-19 on January 1st Helen received an updated (bivalent) booster on January 5th 	As of January 5 th , Helen is considered Up to date when reporting to COVID-19 Vaccination Modules because she received an updated (bivalent) booster dose.	<p>No, Helen is not included in the Up to date category for RIFC because she tested positive prior to receiving the updated (bivalent) booster dose.</p> <p>Helen would be counted in the following categories</p> <ul style="list-style-type: none"> Positive test count Complete Primary Vaccination Series Additional or Booster Vaccination Two or More Boosters
<ul style="list-style-type: none"> Sam completed her primary vaccination Series and received 2 monovalent boosters prior to receiving the updated (bivalent) booster dose. Sam received the updated (bivalent) booster on February 1st 	As of February 1 st , Sam is considered Up to date when reporting to COVID-19 Vaccination Modules because she received an updated (bivalent) booster dose.	<p>Yes, Sam is included in the Up to date category for RIFC because she received the updated (bivalent) booster more than 14 days prior to testing positive for COVID-19.</p> <p>Sam would be counted in the following categories for RIFC</p> <ul style="list-style-type: none"> Positive test count

COVID-19 Vaccination Modules: Key Terms

<ul style="list-style-type: none">• Sam tested positive for COVID-19 on February 15th		<ul style="list-style-type: none">• Complete Primary Vaccination Series• Additional or Booster Vaccination• Two or More Boosters• Up to date
---	--	---

Reporting Period: Quarter 4 2022 (September 26, 2022 – December 25, 2022)

The following definitions apply when reporting data through the NHSN COVID-19 Vaccination Modules for the reporting period of Quarter 4, 2022 (representing vaccination data for **September 26, 2022 – December 25, 2022**).

Up to date with COVID-19 vaccines (*Please note that changes for Quarter 4 2022 are highlighted in yellow.*)

Individuals are considered Up to date with their COVID-19 vaccines during the surveillance period of September 26, 2022 – December 25, 2022 for the purpose of NHSN surveillance if they meet (1) of the following criteria:

Received an **updated (bivalent)* booster dose**,

or

- a) Received their **last booster dose less than 2 months ago**, or
- b) Completed their **primary series less than 2 months ago**

* The updated (bivalent) Moderna and Pfizer-BioNTech boosters target the most recent Omicron subvariants. The updated (bivalent) boosters were recommended by the CDC on 9/2/2022. As of this date, the original, monovalent mRNA vaccines are no longer authorized as a booster dose for people ages 12 years and older.

Note: Up to date guidance for individuals ages 11 years and younger differs; please see [Stay Up to date with COVID-19 Vaccines Including Boosters](#) for details.

Note: the NHSN surveillance definition for Up to date is now the same regardless of immunocompromised status.

COVID-19 Vaccination Modules: Key Terms

Reporting Period: Quarter 3 2022 (June 27, 2022 – September 25, 2022)
 The following definitions apply when reporting data through the NHSN COVID-19 Vaccination Modules for the reporting period of Quarter 3, 2022 (representing vaccination data for June 27, 2022 – September 25, 2022).

Up to date with COVID-19 vaccines (Please note that changes for Quarter 3 2022 are highlighted in yellow.)

If Under 50 Years:	If 50 Years and Older:
<p>Received at least one booster dose</p> <p style="text-align: center;"><u>or</u></p> <p>Recently received all recommended doses in the primary vaccine series but is not yet eligible for a booster dose. This includes:</p> <ul style="list-style-type: none"> c) Those who completed their 2-dose primary series of an mRNA COVID-19 vaccine (Pfizer-BioNTech or Moderna) less than 5 months ago. d) Those who received a single dose of Janssen less than two months ago. 	<p>Received second booster dose (<u>or</u> received first booster dose less than 4 months ago and not yet eligible for a second booster dose)</p> <p style="text-align: center;"><u>or</u></p> <p>Recently received all recommended doses in the primary vaccine series** but is not yet eligible for a booster dose. This includes:</p> <ul style="list-style-type: none"> a) Those who completed their 2-dose primary series of an mRNA COVID-19 vaccine (Pfizer-BioNTech or Moderna) less than 5 months ago. b) Those who received a single dose of Janssen less than two months ago.

*Individuals with a moderately to severely immunocompromising condition are considered Up to date in the following cases:

- 1) Received an additional dose less than three months ago, if primary series was the Moderna or Pfizer-BioNTech COVID-19 vaccine; or
- 2) Received an additional dose less than two months ago, if primary series was the Janssen COVID-19 vaccine; or
- 3) Received an additional dose and one booster dose less than four months ago: or
- 4) Received a second booster dose.

**The Novavax COVID-19 Vaccine was approved by the FDA on July 13, 2022. The Novavax COVID-19 Vaccine, Adjuvanted is administered as a two-dose primary series. Individuals who complete the Novavax primary series are considered Up to date two weeks after the final dose in their primary series, since a booster dose is not recommended at this time for anyone who has completed the Novavax primary series.



Primary vaccine series

Completing a primary vaccine series means receiving:

- A 2-dose series of a COVID-19 vaccine **OR**
- A single dose of Janssen COVID-19 vaccine

Booster dose

A booster dose is a subsequent dose of vaccine administered to enhance or restore protection which might have waned over time after primary series vaccination.

Additional dose

An additional dose is another dose of vaccine administered to people who were less likely to mount a protective immune response after initial vaccination (i.e., those who are moderately or severely immunocompromised).

**Note:* Assume all doses received after primary series are booster doses unless you have specific documentation of an individual receiving an additional dose.

Examples: Up to date with COVID-19 Vaccines

Examples	Considered up to date?
<ul style="list-style-type: none"> • Mary is 35 years old. • Mary received 2 doses of the Moderna COVID-19 vaccine. • Mary received one booster dose of the Moderna COVID-19 vaccine 2 months ago. 	Yes, Mary is Up to date with COVID-19 vaccines because she is less than 50 years old and received one booster dose.
<ul style="list-style-type: none"> • Tom is 60 years old. • Tom received 2 doses of the Pfizer COVID-19 vaccine. • Tom received one booster dose of the Moderna COVID-19 vaccine 4.5 months ago. 	No, Tom is not Up to date with COVID-19 vaccines because he is 60 years old (i.e., greater than 50) and received only one booster dose 4.5 months ago. Since it has been more than 4 months since his booster dose, Tom is now eligible for a second booster dose but has not yet received it.
<ul style="list-style-type: none"> • Jackie is 78 years old. • Jackie received 2 doses of the Moderna COVID-19 vaccine. • Jackie received two booster doses of the Moderna COVID-19 vaccine; last dose was 7 months ago. 	Yes, Jackie is Up to date with COVID-19 vaccines because she received two booster doses.
<ul style="list-style-type: none"> • John is 23 years old. • John received 2 doses of the Moderna COVID-19 vaccine; last dose was 7 months ago. 	No, John is not Up to date with COVID-19 vaccines because he has not received a booster dose even though he is eligible for it. It has been over 5 months since John received his second dose of the Moderna COVID-19 vaccine. Therefore, John is eligible for a booster dose. He

	has not yet received a booster dose, so he is not up to date.
<ul style="list-style-type: none"> Frank is 70 years old. Frank received 2 doses of the Pfizer-BioNTech COVID-19 vaccine; last dose was 3 months ago. 	Yes, Frank is Up to date with COVID-19 vaccines. It has been three months since Frank received his second dose of the Pfizer-BioNTech COVID-19 vaccine. Therefore, Frank is not yet eligible for a booster dose at this time (but will be eligible in two months).
<ul style="list-style-type: none"> Jane is 19 years old. Jane only received the first dose of the Pfizer-BioNTech COVID-19 vaccine. 	No, Jane is not Up to date with COVID-19 vaccines because she did not receive all recommended doses in the primary vaccine series.
<ul style="list-style-type: none"> Alice received 2 doses of the Moderna COVID-19 vaccine. Alice received an additional dose one month ago due to having a moderately immunocompromising condition. Alice did not receive any booster doses. 	Yes, Alice is Up to date with COVID-19 vaccines because she received an additional dose less than three months ago. Therefore, Alice is not yet eligible for a booster dose at this time (but will be eligible in two months).

Reporting Period: Quarter 2 2022 (May 30, 2022 – June 26, 2022)

The following definitions apply when reporting data through the NHSN COVID-19 Vaccination Modules for the reporting periods of Quarter 2, 2022 (representing vaccination data for May 30, 2022 through June 26, 2022).

Primary vaccine series

Completing a primary vaccine series means receiving:

- A 2-dose series of an mRNA COVID-19 vaccine (Pfizer-BioNTech and Moderna), **OR**
- A single dose of Janssen COVID-19 vaccine

Booster dose

A booster dose is a subsequent dose of vaccine administered to enhance or restore protection which might have waned over time after primary series vaccination.

Additional dose

An additional dose is another dose of vaccine administered to people who were less likely to mount a protective immune response after initial vaccination (i.e., those who are moderately or severely immunocompromised).

*Note: Assume all doses received after primary series are booster doses unless you have specific documentation of an individual receiving an additional dose.

Up to date with COVID-19 Vaccines

Individuals are considered Up to date with their COVID-19 vaccines during the surveillance period of May 30, 2022 through June 26, 2022 for the purpose of NHSN surveillance if they meet (1) of the following criteria*:

1. An individual received all recommended doses in their **primary vaccine series** and received at least **one booster dose**. An individual does not need to receive a second booster dose to be considered Up to date at this time.
2. An individual **recently** received all recommended doses in the **primary vaccine series** and is **not yet eligible for a booster dose**. Individuals who are not yet eligible to receive a booster dose include:
 - a. Those who received their second dose of a 2-dose primary series of an mRNA COVID-19 vaccine (Pfizer-BioNTech or Moderna) less than 5 months ago.
 - b. Those who received a single dose of Janssen less than two months ago.

*Individuals with a moderately to severely immunocompromising condition are considered Up to date in the following cases:

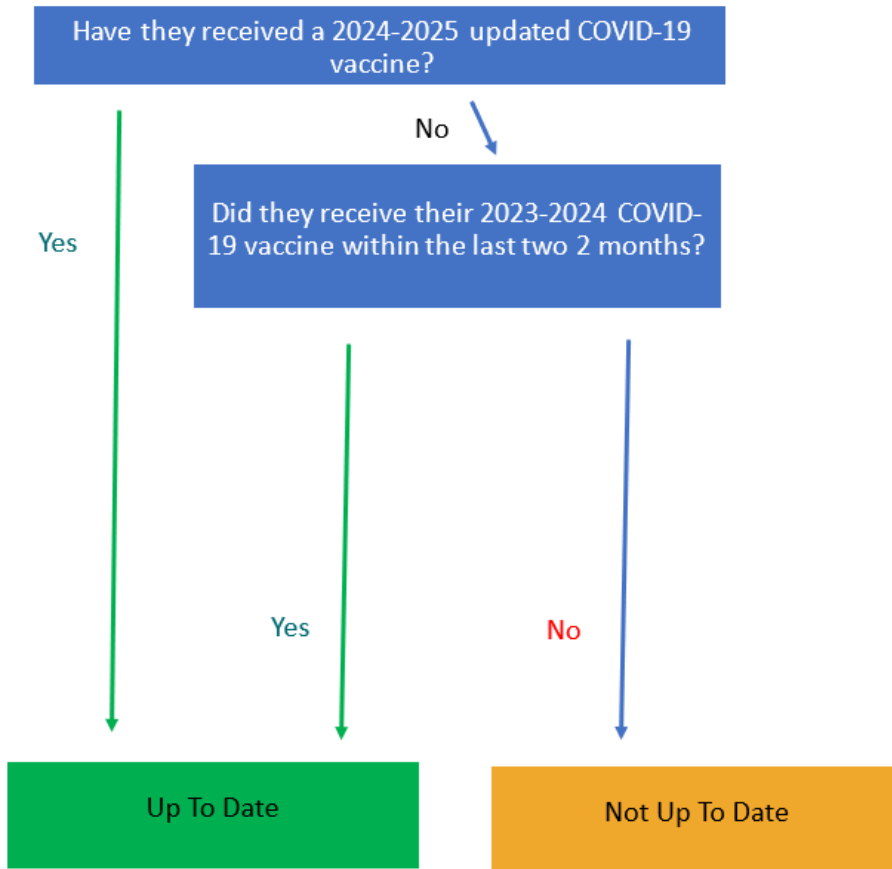
- 1) An individual received an additional dose less than three months ago, if primary series was the Moderna or Pfizer-BioNTech COVID-19 vaccine; or
- 2) An individual received an additional dose less than two months ago, if primary series was the Janssen COVID-19 vaccine; or
- 3) An individual received at least one booster dose after receiving an additional dose.

Examples: Up to date with COVID-19 Vaccines

Examples	Considered up to date?
<ul style="list-style-type: none"> Mary received 2 doses of the Moderna COVID-19 vaccine. Mary received one booster dose of the Moderna COVID-19 vaccine 2 months ago. 	<p>Yes, Mary is Up to date with COVID-19 vaccines because she received one booster doses</p>
<ul style="list-style-type: none"> Jackie received 2 doses of the Moderna COVID-19 vaccine. Jackie received two booster doses of the Moderna COVID-19 vaccine; last dose was 7 months ago. 	<p>Yes, Jackie is Up to date with COVID-19 vaccines because she received one booster dose. (In this case, she received two booster doses.)</p>
<ul style="list-style-type: none"> John received 2 doses of the Moderna COVID-19 vaccine; last dose was 7 months ago. 	<p>No, John is not Up to date with COVID-19 vaccines because he has not received a booster dose even though he is eligible for it. It has been over 5 months since John received his second dose of the Moderna COVID-19 vaccine. Therefore, John is eligible for a booster dose. He has not yet received a booster dose, so he is not up to date.</p>
<ul style="list-style-type: none"> Tom received 2 doses of the Pfizer-BioNTech COVID-19 vaccine; last dose was 3 months ago. 	<p>Yes, Tom is Up to date with COVID-19 vaccines. It has been three months since Tom received his second dose of the Pfizer-BioNTech COVID-19 vaccine. Therefore, Tom is not yet eligible for a booster dose at this time (but will be eligible in two months).</p>
<ul style="list-style-type: none"> Jane only received the first dose of the Pfizer-BioNTech COVID-19 vaccine. 	<p>No, Jane is not Up to date with COVID-19 vaccines because she did not receive all recommended doses in the primary vaccine series.</p>
<ul style="list-style-type: none"> Matt received 2 doses of the Moderna COVID-19 vaccine. Matt received an additional dose due to having a severely immunocompromising condition. Matt received one booster dose after the additional dose. 	<p>Yes, Matt is Up to date with COVID-19 vaccines because he received a booster dose after the additional dose of his primary series for his immunocompromising condition.</p>
<ul style="list-style-type: none"> Alice received 2 doses of the Moderna COVID-19 vaccine. Alice received an additional dose one month ago due to having a moderately immunocompromising condition. Alice did not receive any booster doses. 	<p>Yes, Alice is Up to date with COVID-19 vaccines because she received an additional dose less than three months ago. Therefore, Alice is not eligible for a booster dose at this time (but will be eligible in two months).</p>

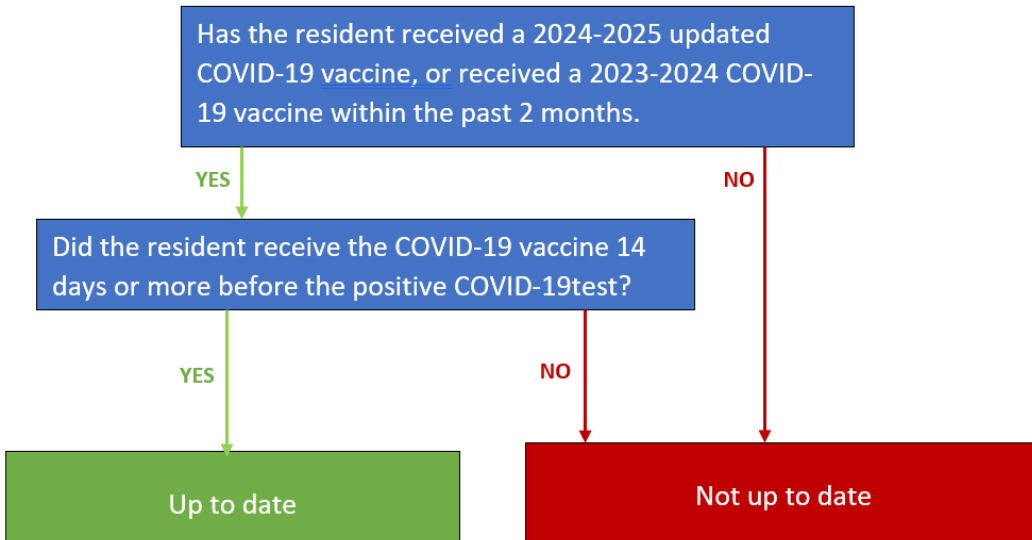
Appendices: Decision Trees on Reporting Vaccination Status

Appendix 1a: Up to Date with COVID-19 vaccines during the surveillance period of Quarter 4 of 2024 (September 30, 2024 – through December 29, 2024) for question 2a

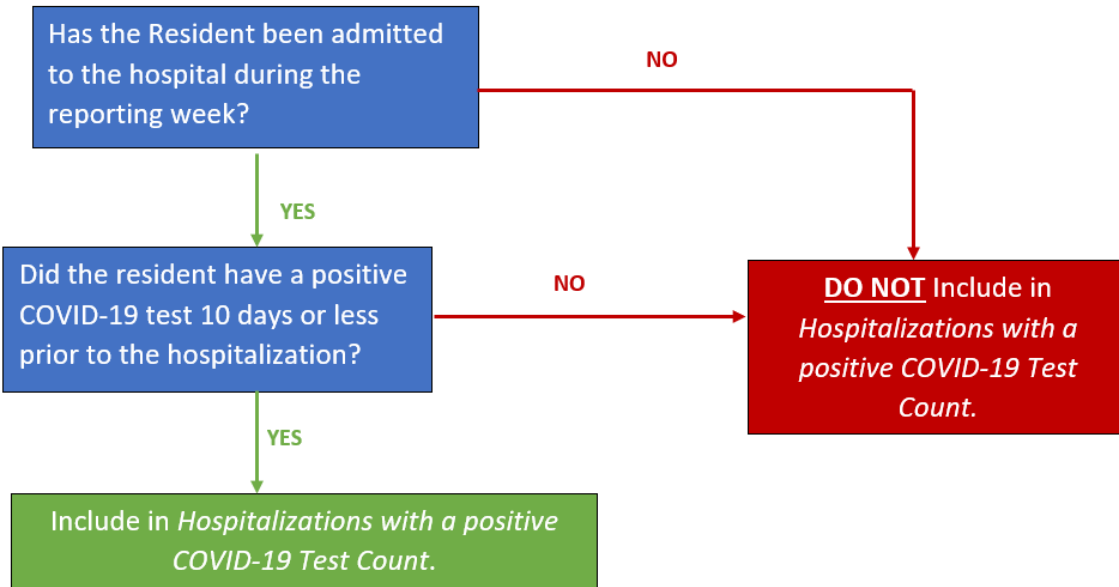


Appendix 1b: Decision trees for the case and hospitalizations questions (3ai, 4a, and 4ai) during the surveillance period of Quarter 4 of 2024 (September 30, 2024 – through December 29, 2024)

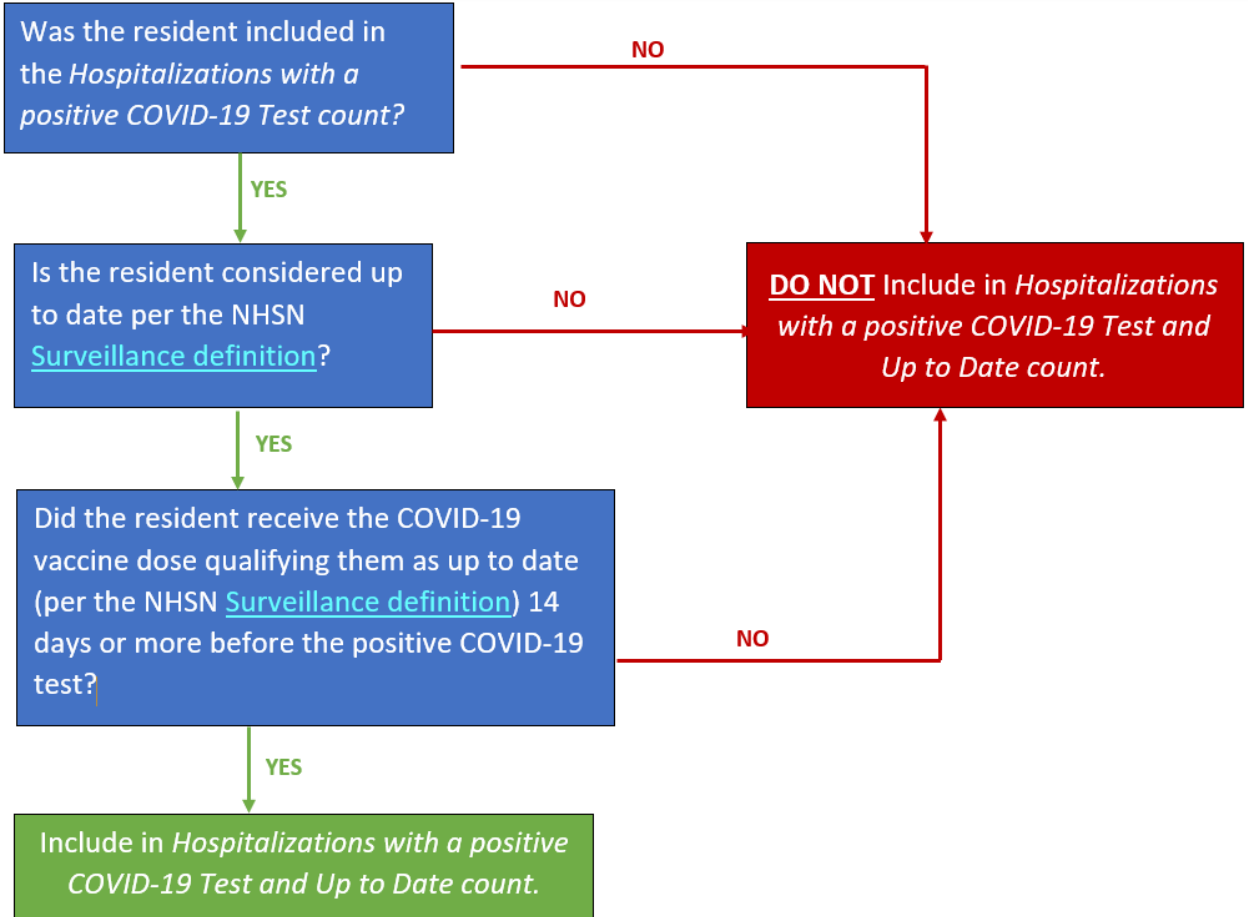
Determining up to date COVID-19 vaccination status among positive tests (Question 3ai)



Determining hospitalizations with a positive test (Question 4a)



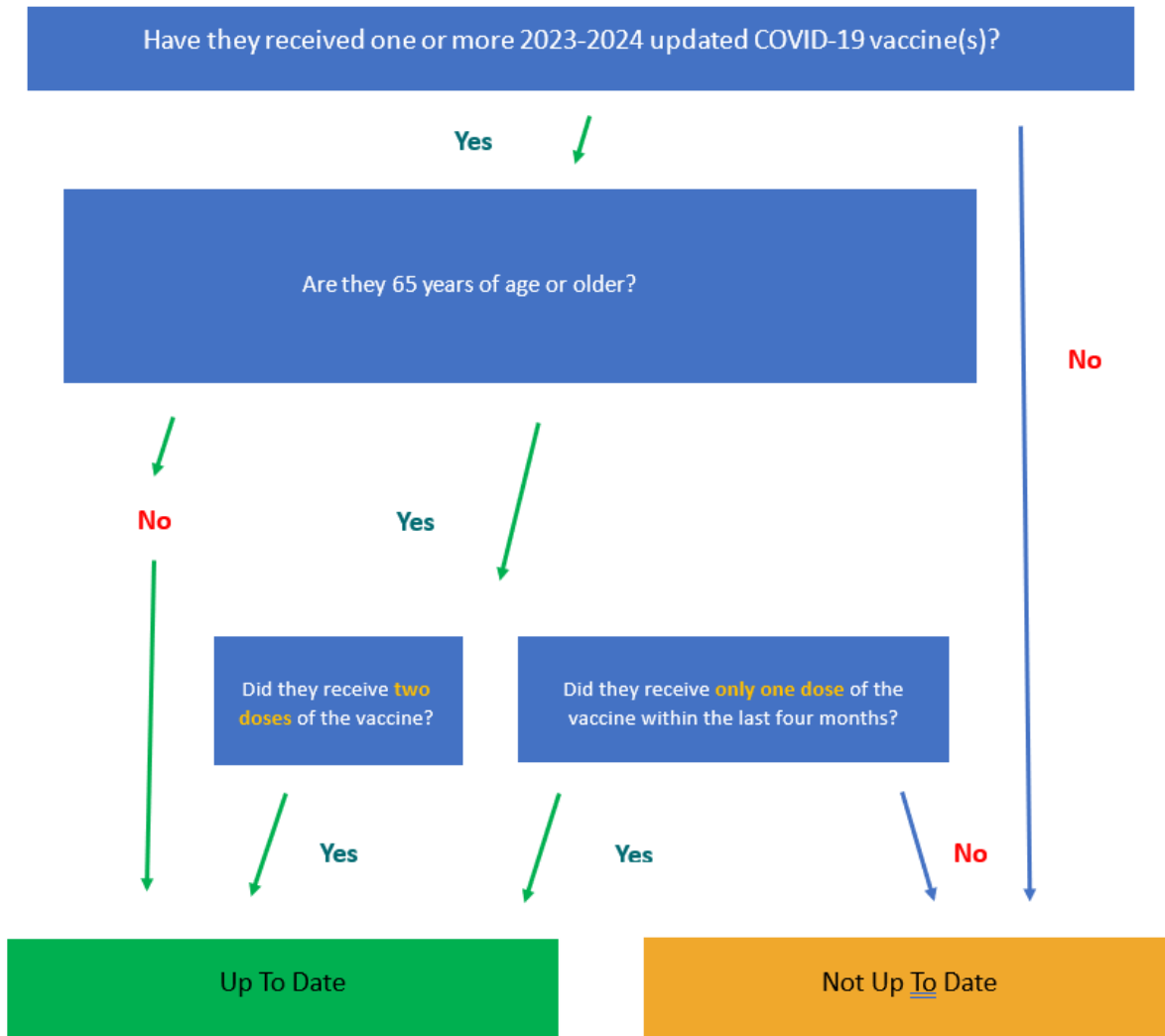
Determining up to date COVID-19 vaccination status among hospitalizations with a positive test (Question 4ai)



COVID-19 Vaccination Modules: Key Terms

Appendix 2a: Decision Tree: Up to date with COVID-19 Vaccines during the surveillance period Quarter 2 2024 (April 1, 2024 – June 30, 2024) and Quarter 3 2024 (July 1, 2024 – September 29 2024) for the COVID-19 Vaccination Modules

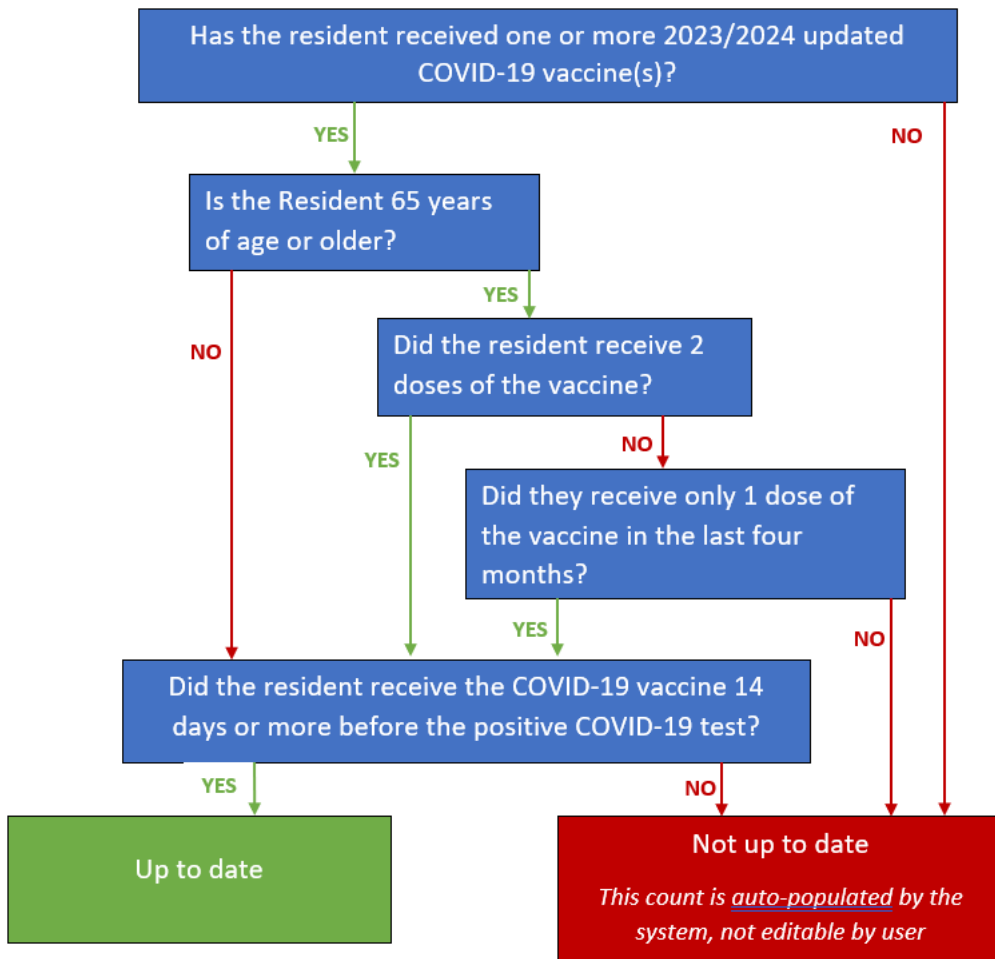
Facilities can use the following decision tree to help determine up to date vaccination status for the NHSN COVID-19 Vaccination Modules during the reporting period of Quarter 2 of 2024 (representing vaccination data for April 1, 2024 – June 30, 2024) and Quarter 3 2024 (representing data for July 1, 2024 – September 29, 2024).



COVID-19 Vaccination Modules: Key Terms

Appendix 2b: Decision Tree: Up to date with COVID-19 Vaccines during the surveillance period Quarter 2 2024 (April 1, 2024 – June 30, 2024) and Quarter 3 2024 (July 1, 2024 – September 29 2024) for the Long-Term Care RIFC Pathway

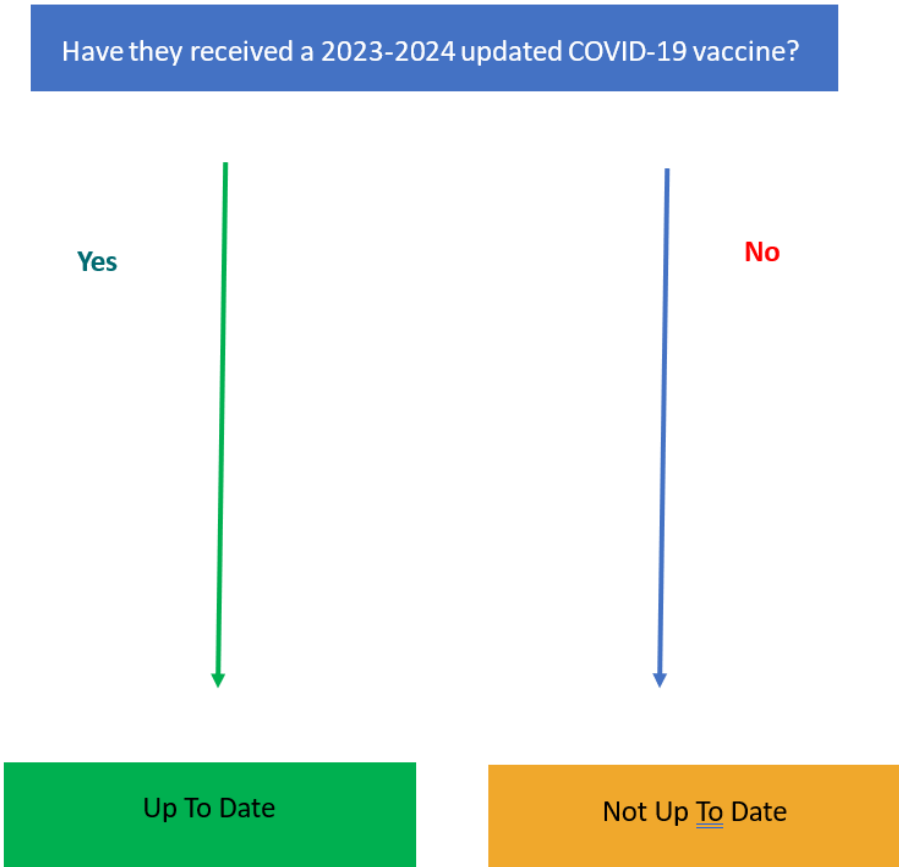
Long-Term Care Facilities can use the following decision tree to help determine Up to date vaccination status for the RIFC Pathway. Please note this refers to reporting data through the NHSN COVID-19 RIFC Pathway for the reporting period of Quarter 2 of 2024 (representing data for April 1, 2024 – June 30, 2024) and Quarter 3 2024 (representing data for July 1, 2024 – September 29, 2024).



COVID-19 Vaccination Modules: Key Terms

Appendix 3a: Decision Tree: Up to date with COVID-19 Vaccines during the surveillance period of January 1, 2024 – March 31, 2024 for the COVID-19 Vaccination Modules

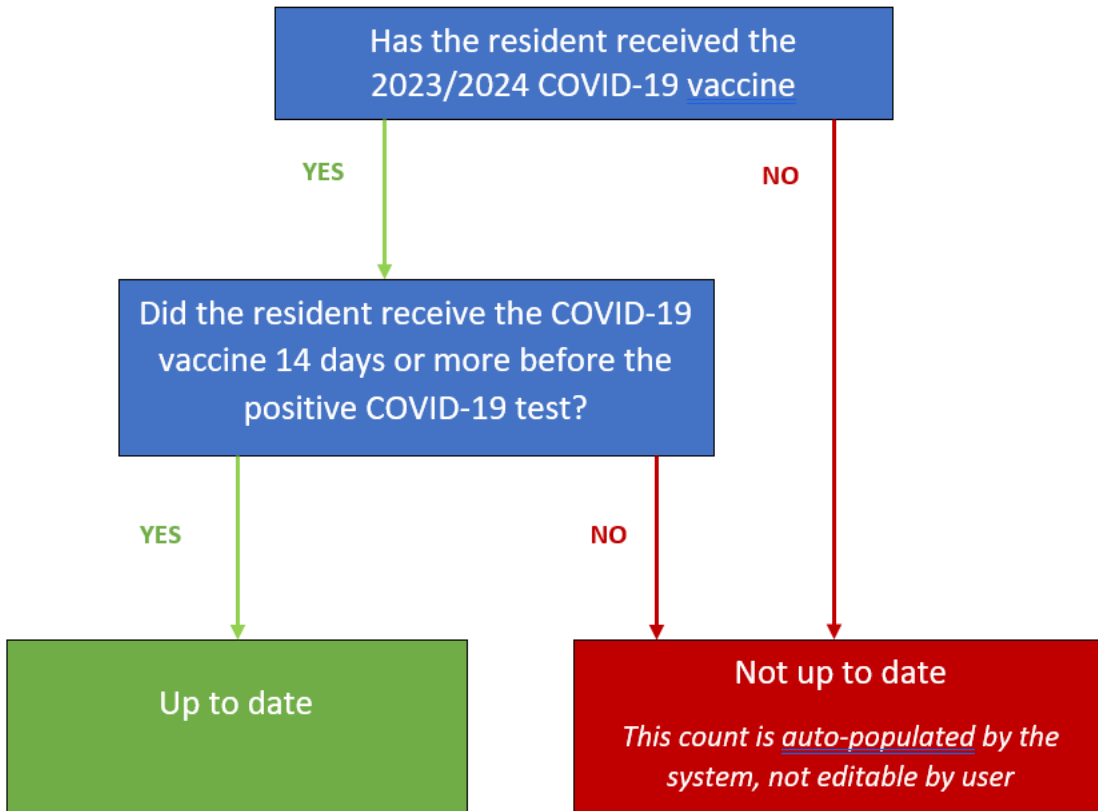
Facilities can use the following decision tree to help determine Up to date vaccination status for the NHSN COVID-19 Vaccination Modules during the reporting period of Quarter 1 of 2024 (representing vaccination data for January 1, 2024 – March 31, 2024).



COVID-19 Vaccination Modules: Key Terms

Appendix 3b: Decision Tree: Up to date with COVID-19 Vaccines during the surveillance period January 1, 2024 – March 31, 2024 for the Long-Term Care RIFC Pathway

Long-Term Care Facilities can use the following decision tree to help determine Up to date vaccination status for the RIFC Pathway. Please note this refers to reporting data through the NHSN COVID-19 RIFC Pathway for the reporting period of Quarter 1 of 2024 (representing data for January 1, 2024 – March 31, 2024).



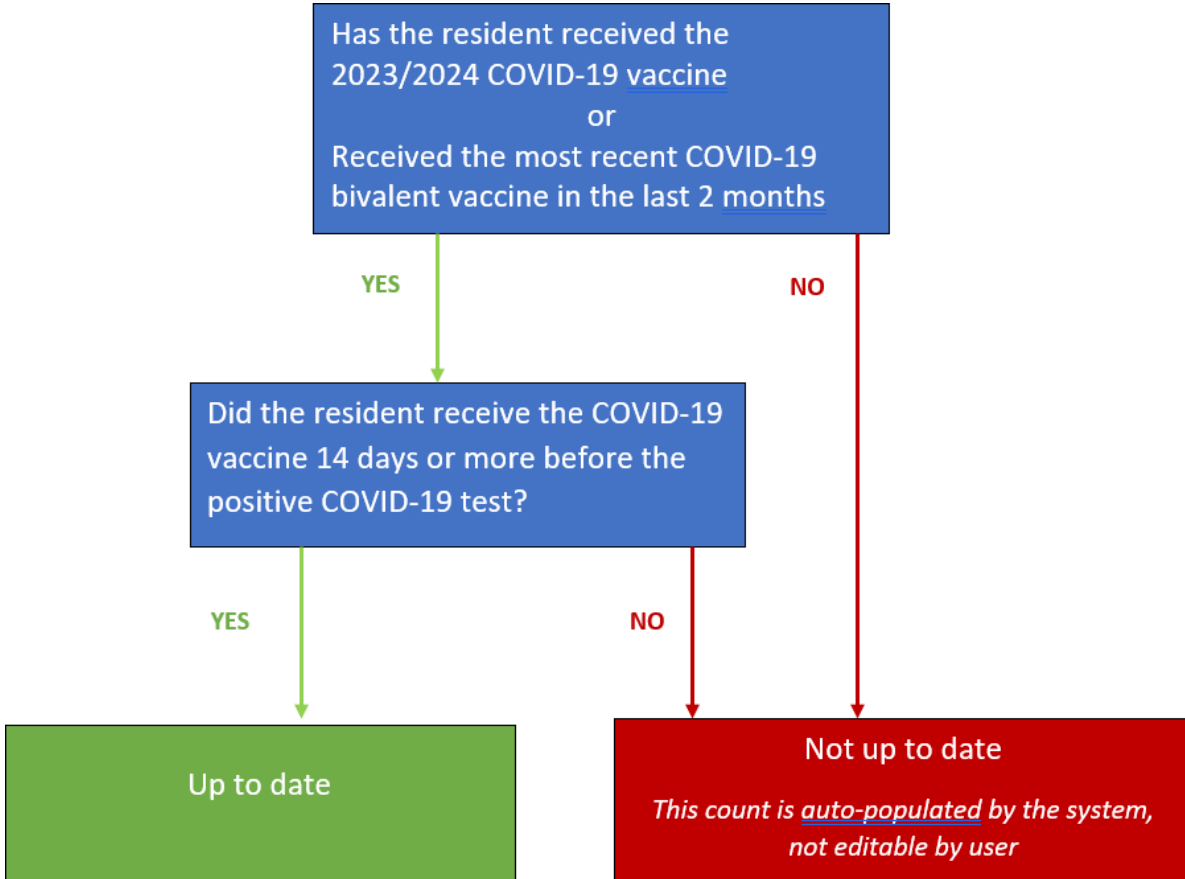
Appendix 4a: Decision Tree: Up to date with COVID-19 Vaccines during the surveillance period
September 25, 2023 – December 31, 2023 for COVID-19 Vaccination Modules

Facilities can use the following decision tree to help determine Up to date vaccination status for the NHSN COVID-19 Vaccination Modules during the reporting period of Quarter 4 of 2023 (representing vaccination data for September 25, 2023 – December 31, 2023).

COVID-19 Vaccination Modules: Key Terms

Appendix 4b: Decision Tree: Up to date with COVID-19 Vaccines during the surveillance period September 25, 2023 – December 31, 2023 for the Long-Term Care RIFC Pathway

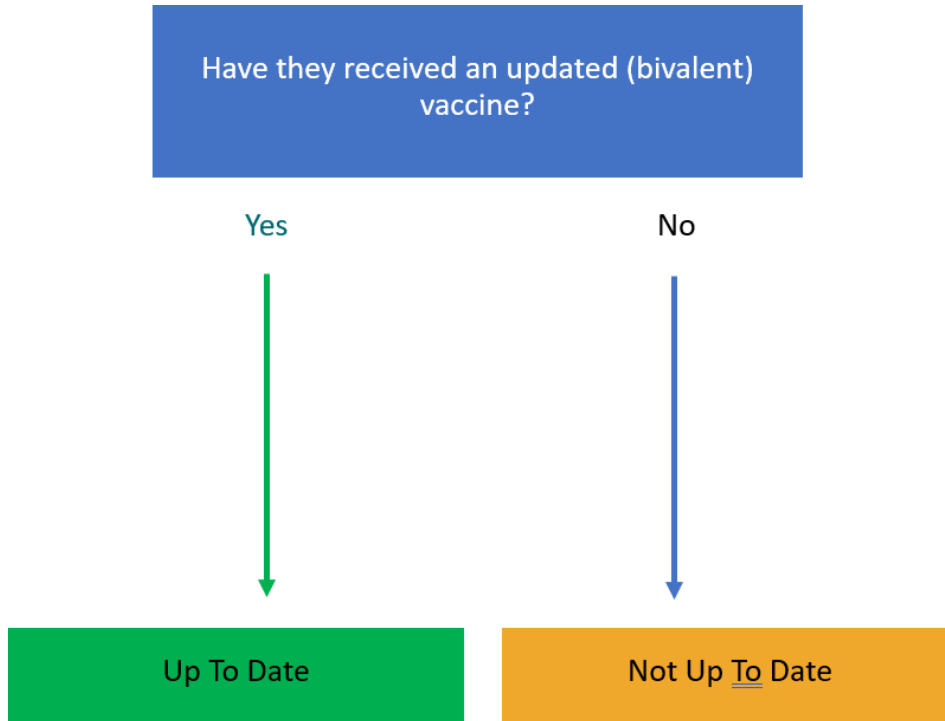
Long-Term Care Facilities can use the following decision tree to help determine Up to date vaccination status for the RIFC Pathway. Please note this refers to reporting data through the NHSN COVID-19 RIFC Pathway for the reporting period of Quarter 4 of 2023 (representing data for September 25, 2023 – December 31, 2023).



COVID-19 Vaccination Modules: Key Terms

Appendix 5a: Decision Tree: Up to date with COVID-19 Vaccines during the surveillance period of June 26, 2023 – September 24, 2023 for the COVID-19 Vaccination Modules

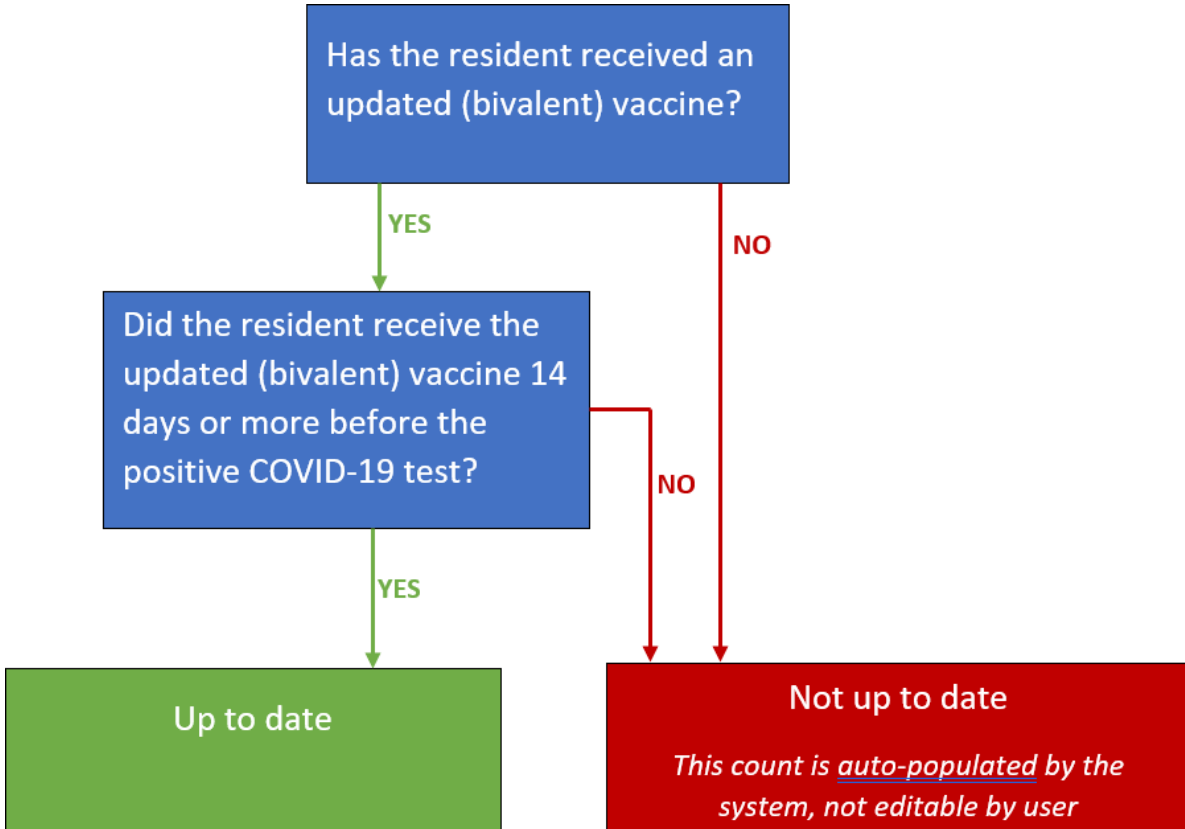
Facilities can use the following decision tree to help determine Up to date vaccination status for the NHSN COVID-19 Vaccination Modules during the reporting period of Quarter 3, 2023 (representing vaccination data for June 26, 2023 – September 24, 2023).



COVID-19 Vaccination Modules: Key Terms

Appendix 5b: Decision Tree: Up to date with COVID-19 Vaccines during the surveillance period June 26, 2023 – September 24, 2023 for the Long-Term Care RIFC Pathway

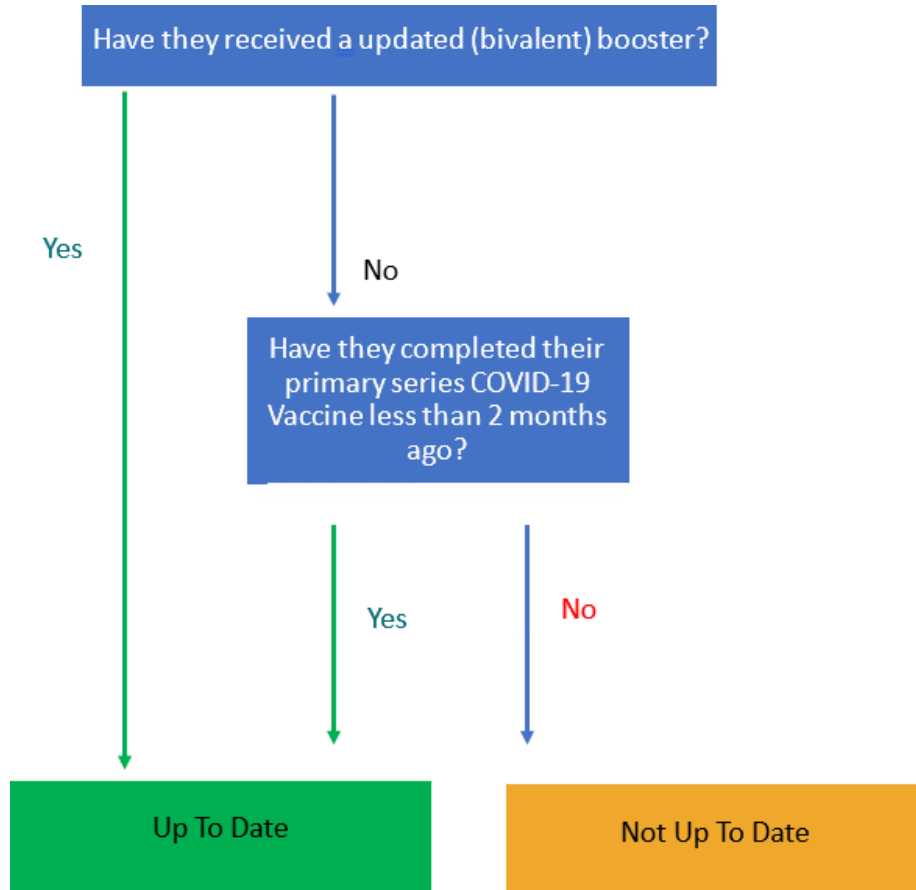
Long-Term Care Facilities can use the following decision tree to help determine Up to date vaccination status for the RIFC Pathway. Please note this refers to reporting data through the NHSN COVID-19 RIFC Pathway for the reporting period of Quarter 3, 2023 (representing data for June 26, 2023 – September 24, 2023).



COVID-19 Vaccination Modules: Key Terms

Appendix 6a: Decision Tree: Up to date with COVID-19 Vaccines during the surveillance period of December 26, 2022 – March 26, 2023 and March 27, 2023 – June 25, 2023 for the COVID-19 Vaccination Modules

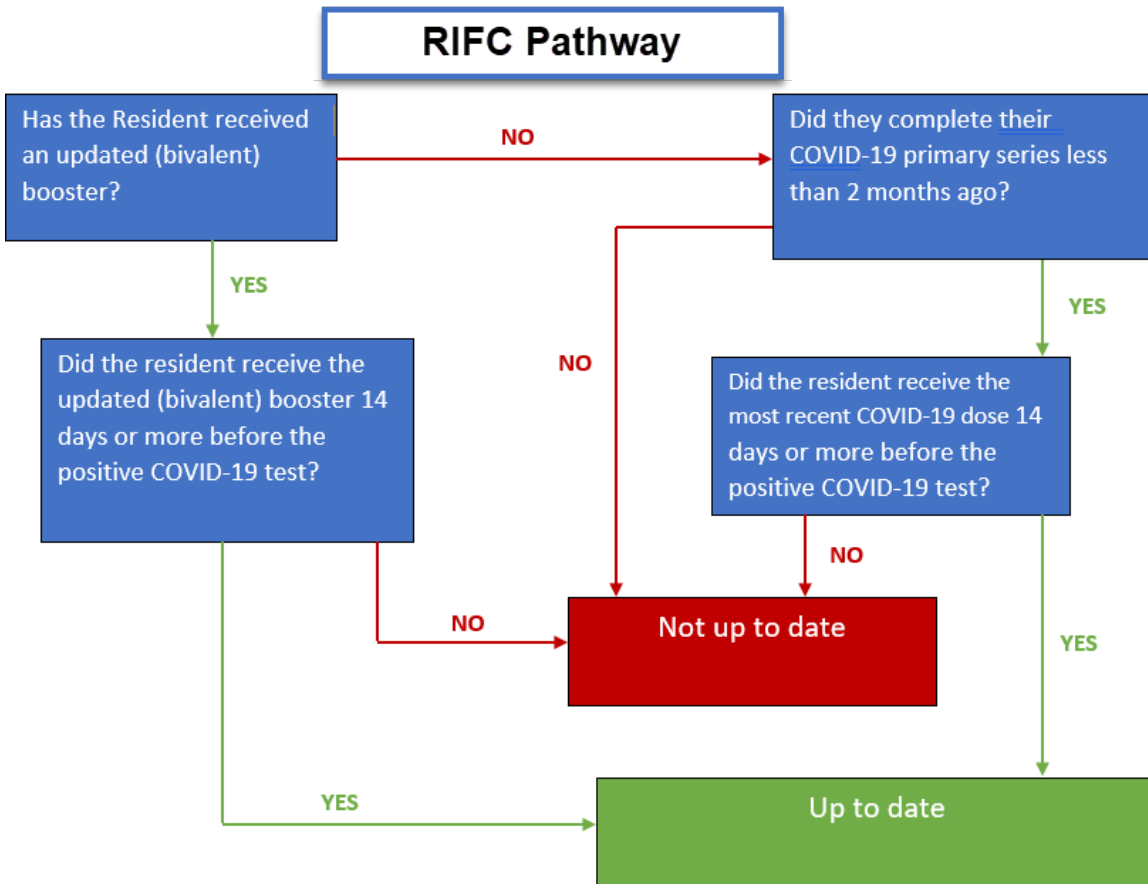
Facilities can use the following decision tree to help determine Up to date vaccination status for the NHSN COVID-19 Vaccination Modules during the reporting period of Quarter 1, 2023 (representing vaccination data for December 26, 2022 – March 26, 2023) and Quarter 2, 2023 (representing vaccination data for March 27, 2023 – June 25, 2023).



COVID-19 Vaccination Modules: Key Terms

Appendix 6b: Decision Tree: Up to date with COVID-19 Vaccines during the surveillance period December 26, 2022 – March 26, 2023 and March 27, 2023 – June 25, 2023 for the Long-Term Care RIFC Pathway

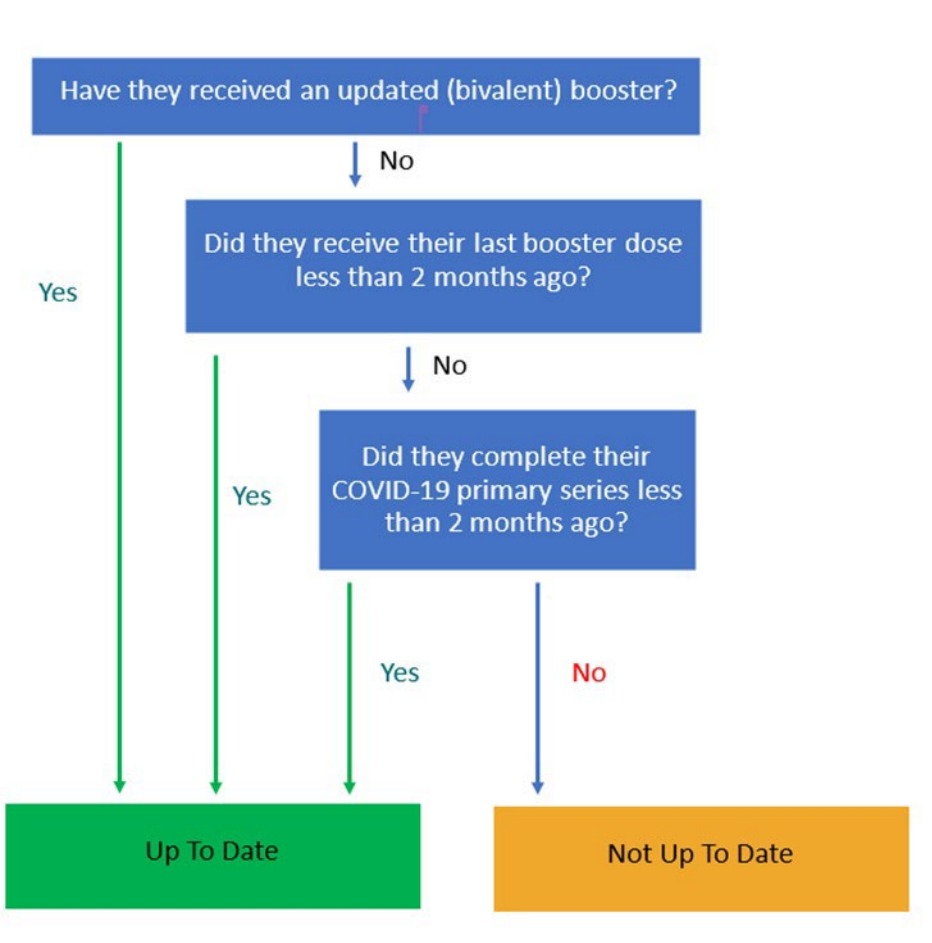
Long-Term Care Facilities can use the following decision tree to help determine Up to date vaccination status for the RIFC Pathway. Please note this refers to reporting data through the NHSN COVID-19 RIFC Pathway for the reporting period of Quarter 1, 2023 (representing data for December 26, 2022 – March 26, 2023) and Quarter 2, 2023 (representing vaccination data for March 27, 2023 – June 25, 2023).



COVID-19 Vaccination Modules: Key Terms

Appendix 7a: Decision Tree: Up to date with COVID-19 Vaccines during the surveillance period of September 26, 2022 – December 25, 2022 for the COVID-19 Vaccination Modules

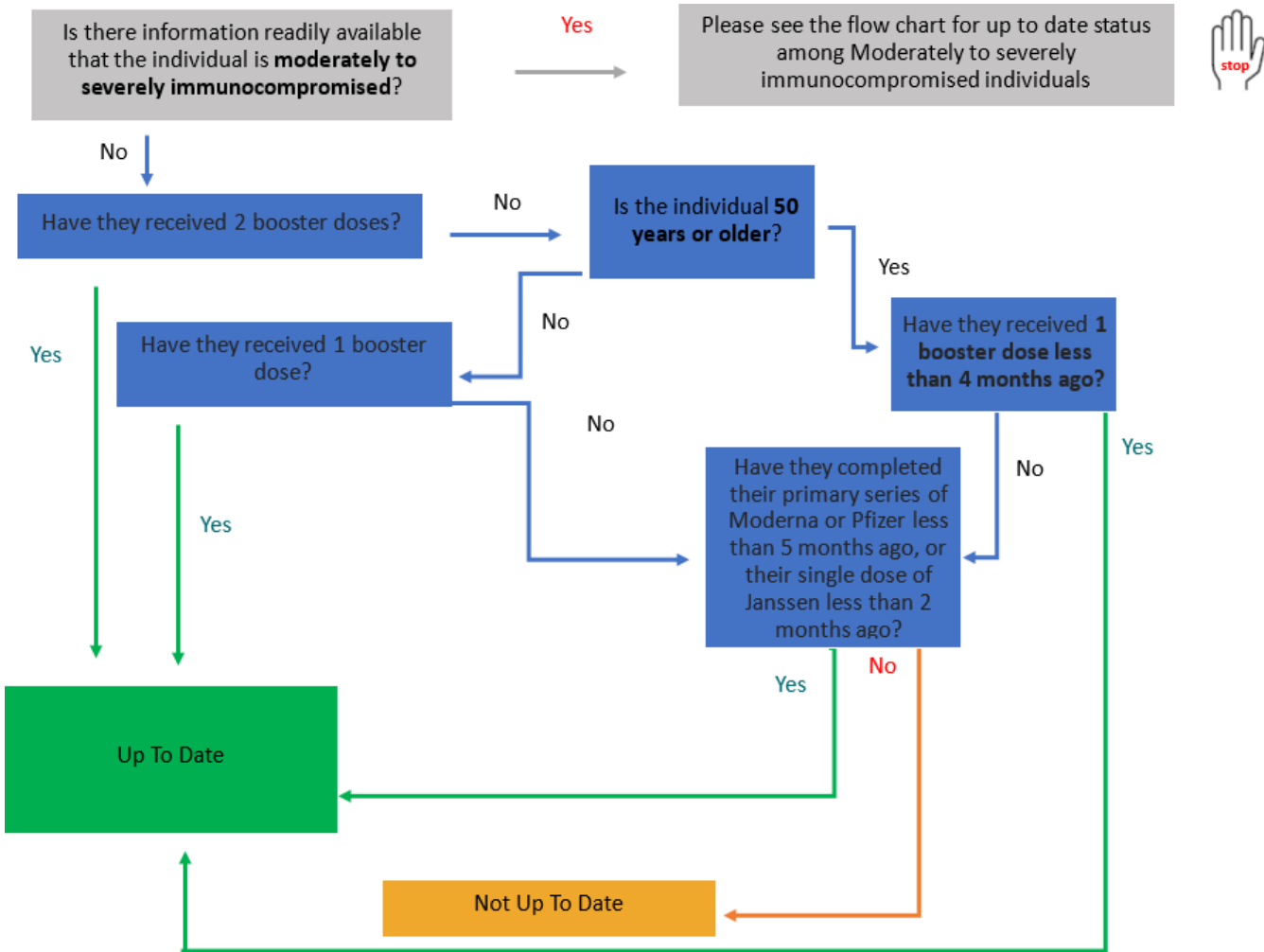
Facilities can use the following decision tree to help determine Up to date vaccination status. Please note this refers to reporting data through the NHSN COVID-19 Vaccination Modules for the reporting period of Quarter 4, 2022 (representing vaccination data for September 26, 2022 – December 25, 2022)



COVID-19 Vaccination Modules: Key Terms

Appendix 8a: Decision Tree: Determining Up to date Vaccination Status for Reporting Period Quarter 3 2022 (June 27, 2022 – September 25, 2022)

Facilities can use the following decision tree to help determine Up to date vaccination status. Please note this refers to reporting data through the NHSN COVID-19 Vaccination Modules for the reporting period of Quarter 3, 2022 (representing vaccination data for June 27, 2022 through September 25, 2022).



COVID-19 Vaccination Modules: Key Terms

Appendix 8b: Decision Tree: Determining Up to Date Vaccination Status for Moderately to Severely Immunocompromised individuals for Reporting Period Quarter 3 2022 (June 27, 2022 – September 25, 2022)

Facilities can use the following decision tree to help determine up to date vaccination status. Please note this refers to reporting data through the NHSN COVID-19 Vaccination Modules for the reporting period of Quarter 3, 2022 (representing vaccination data for June 27, 2022 through September 25, 2022)

