



National  
Association of  
School Nurses



**Lead Screening, Testing &  
Prevention in School Children:  
How School Nurses Help**

# Whole School, Whole Community, Whole Child

---

## Student-centered:

Healthy, Safe, Engaged, Supported,  
and Challenged

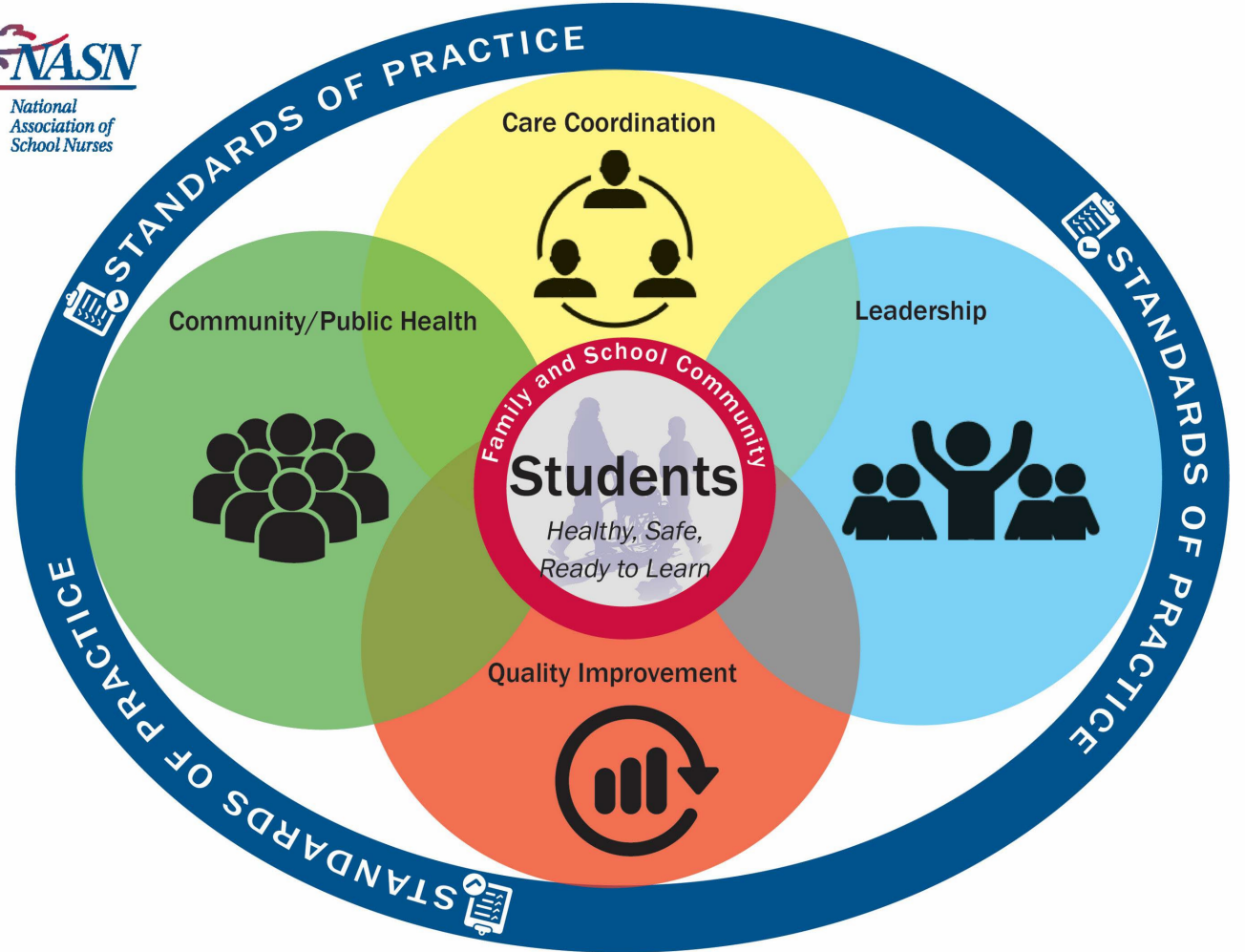
Collaboration of education & health





# School Health Services

---



# Snapshot of Public School Students

---

---

In autumn 2021, of the 49.5 million students enrolled in prek-12 schools

---

1.4 million attended prekindergarten

---

3.6 million attended kindergarten

---

Students who are part of immigrant and refugee families

Social  
Determinants  
of Health:  
Impact on  
Health and  
Learning

---

Poverty or financial challenges

---

Food insecurity

---

Cultural factors

---

Literacy and English language proficiency

---

Access to primary care

---

Hierarchy of needs



School Nurses  
Collaborate  
with Students  
and Families



School Nurses  
Collaborate with  
Community Agencies  
and Providers

What can  
make a  
positive  
difference?

---

Children and families are in communities

---

Schools are in communities

---

Social determinants influence health and learning

---

Make connections with schools, especially school nurses to equip with awareness, and education that can be provided to families



# References

Chen, Y-H., Ma, Z-Q., Watkins, & S.M. (2021). Effects of individual and neighborhood characteristics on childhood blood lead testing and elevated blood lead levels, A Pennsylvania birth cohort analysis. *Journal of Primary Care & Community Health*,12. <https://doi.org/10.1177/21501327211017780>

Dignam, T., Kaufmann, R. B., LeSturgeon, L., & Brown, M. J. (2019). Control of lead sources in the United States, 1970-2017: Public health progress and current challenges to eliminating lead exposure. *Journal of Public Health Management and Practice*, 25 Suppl 1, S13–S22. <https://doi.org/10.1097/PHH.0000000000000889>

Payne, S., Cadet, J., & Harris, K. (2020). Lead toxicity in children. *American Nurse Journal*. American Nurses Association. <https://www.myamericannurse.com/lead-toxicity-in-children/>

Schroeder, K., Malone, S.K., McCabe, E., & Lipman, T. (2018). Addressing the social determinants of health: A call to action for school nurses. *The Journal of School Nurses*, 34(3), 182-191. <https://doi.org/10.1177%2F1059840517750733>

U.S. Department of Education, National Center for Education Statistics, Common Core of Data (CCD), "State Nonfiscal Survey of Public Elementary/Secondary Education," 1999-2000 through 2020-21 and 2021-22 Preliminary. (This table was prepared July 2022.)



Donna Mazyck, MS, RN,  
NCSN, CAE, FNASN

Executive Director

National Association of School Nurses

---

[dmazyck@nasn.org](mailto:dmazyck@nasn.org)

[www.nasn.org](http://www.nasn.org)

[@schoolnurses](#)

[@DonnaMazyck](#)