



CDC's Public Health Infrastructure Center

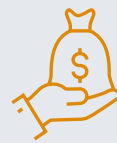
Improving public health outcomes by strengthening the nation's public health infrastructure and workforce

What We Do

CDC's Public Health Infrastructure Center (PHIC) helps health departments nationwide have the **people, services, and systems** necessary to promote and protect health in every U.S. community. PHIC focuses on three key functions to do this:

- **Workforce development.** Building a sustainable, well-prepared public health workforce through training, fellowship opportunities, and development programs.
- **Jurisdictional support.** Providing flexible funding to strengthen the long-term capacity of health departments. Funding helps communities build systems and provide services tailored to their unique, local needs.
- **Partnerships and technical assistance.** Strengthening partnerships to build infrastructure and workforce capacity. Partners provide impactful tools, training, and collaboration opportunities for health departments.

By the Numbers



Awarded \$4.8 billion
to 107 health departments and
3 national partners since 2022



Trained 582 CDC fellows
in 2024, with nearly half
embedded in health departments



Invested \$176 million
in 48 national partners



Helped 446 health departments
nationally to achieve public
health accreditation



How We Work

PHIC efficiently and effectively delivers services to health departments across the country and to other CDC centers, institutes, and offices. Our coordinated, multi-disciplinary approach focuses on:

- **Customer experience.** Delivering high-quality services tailored to meet customer needs.
- **Evaluation and accountability.** Using data to drive improvements and measure impact.
- **Results-based partnerships.** Advancing shared goals through collaboration.
- **Program development.** Creating and delivering quality programs that strengthen public health infrastructure.
- **Innovative solutions.** Applying the latest science, technology, and innovation to improve public health.

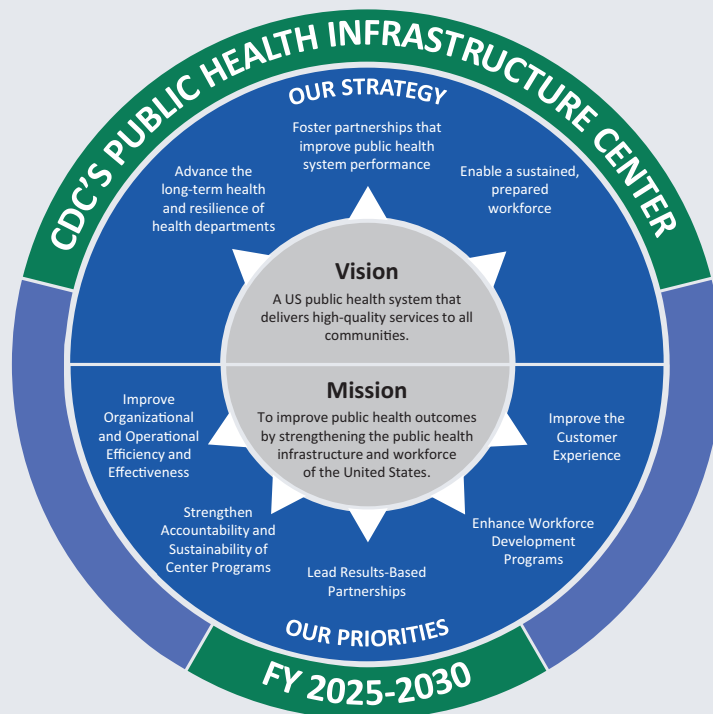
Where We Work

PHIC ensures all communities have access to strong public health systems, including those with specific public health challenges—tribal nations, rural communities, and US territories and freely associated states. In addition to serving state and county health departments nationwide, PHIC has three dedicated offices that lead initiatives to strengthen infrastructure in these communities:

- **Office of Tribal Affairs and Strategic Alliances.** Serves as CDC's main liaison for tribal public health, coordinating government-to-government relationships with tribes and advising CDC programs on tribal needs.
- **Office of Rural Health.** Leads CDC's efforts to improve rural public health by coordinating the agency's rural strategy and collaborating across CDC programs and external partners.
- **Office of Island Affairs.** Strengthens public health systems for Island communities through collaboration with federal and non-federal partners, CDC programs, and health officials.

Blueprint for Stronger Public Health Infrastructure

PHIC's first [Strategic Plan \(FY 2025–2030\)](#) outlines clear priorities aimed at strengthening health department infrastructure nationwide, enabling communities stay healthier daily and respond faster when emergencies strike.



CDC's Public Health Infrastructure Center

A closer look at how our programs support the components of a strong public health infrastructure



Strong, Resilient Health Departments

[Public Health Infrastructure Grant](#) recipients placed more than 6,200 public health professionals—from epidemiologists to community health workers—in health departments nationwide. This fills critical staffing gaps and creates a local talent pipeline so communities can address their most pressing public health challenges, now and in the future.



Faster, More Complete Public Health Data

With funding from the [National Partners Cooperative Agreement](#), the Council of State and Territorial Epidemiologists has rapidly expanded the number of healthcare facilities using electronic case reporting—from fewer than 200 in 2020, to more than 40,000 by 2024. This expansion enables health departments to access faster, more complete data while reducing the paperwork burden for healthcare providers.



A Highly Skilled Workforce

In 2024 alone, 282 full-time CDC fellows provided boots-on-the-ground expertise to health departments nationwide. Of these fellows, 135 [Epidemic Intelligence Service](#) officers supported health department emergency response efforts by investigating outbreaks, informing response strategies, and facilitating rapid decision-making.



Robust Partnerships

The [Office of Tribal Affairs and Strategic Alliances](#) convenes the CDC/ATSDR Tribal Advisory Committee throughout the year to give tribal leaders a direct voice in shaping CDC's initiatives in tribal communities. Highlights from the August 2024 meeting included sharing successes in opioid-use prevention, diabetes care, improving data systems, and strengthening public health systems.



December 2025

www.cdc.gov/infrastructure