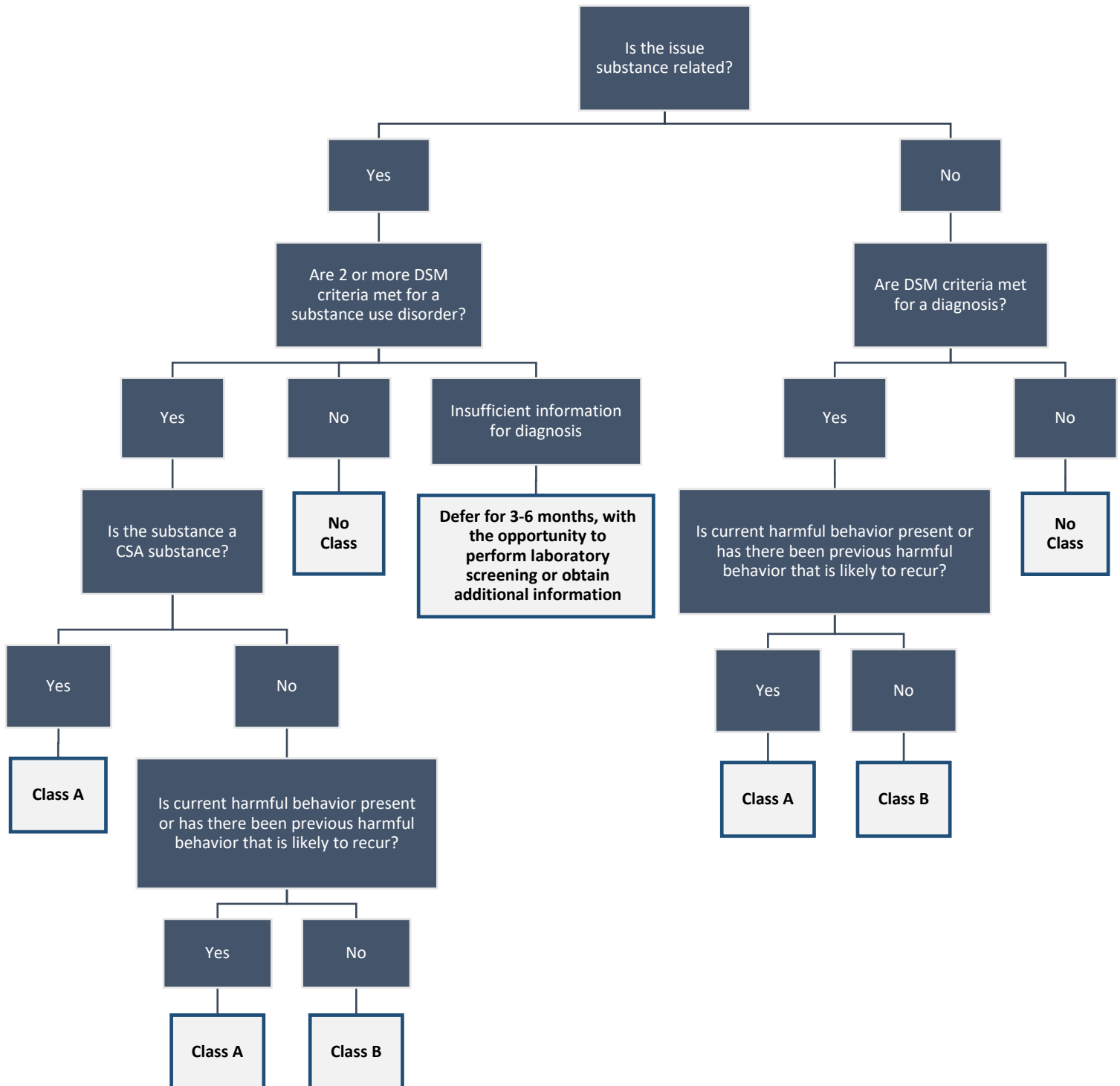


Figure 1. Classification Algorithm for Suspected Physical, Mental, or Substance Use Disorder



DSM = Diagnostics and Statistical Manual of Mental Disorders
CSA = Controlled Substances Act

Text Description:

- Is the issue substance related?
 - Yes
 - Are 2 or more DSM criteria met for a substance use disorder?
 - Yes
 - Is the substance a CSA substance?
 - Yes
 - Class A
 - No
 - Is current harmful behavior present or has there been previous harmful behavior that is likely to recur?
 - Yes
 - Class A
 - No
 - Class B
 - No
 - No Class
 - Insufficient information for diagnosis
 - Defer for 3-6 months, with the opportunity to perform laboratory screening or obtain additional information
 - No
 - Are DSM criteria met for a diagnosis?
 - Yes
 - Is current harmful behavior present or has there been previous harmful behavior that is likely to recur?
 - Yes
 - Class A
 - No
 - Class B
 - No
 - No Class