



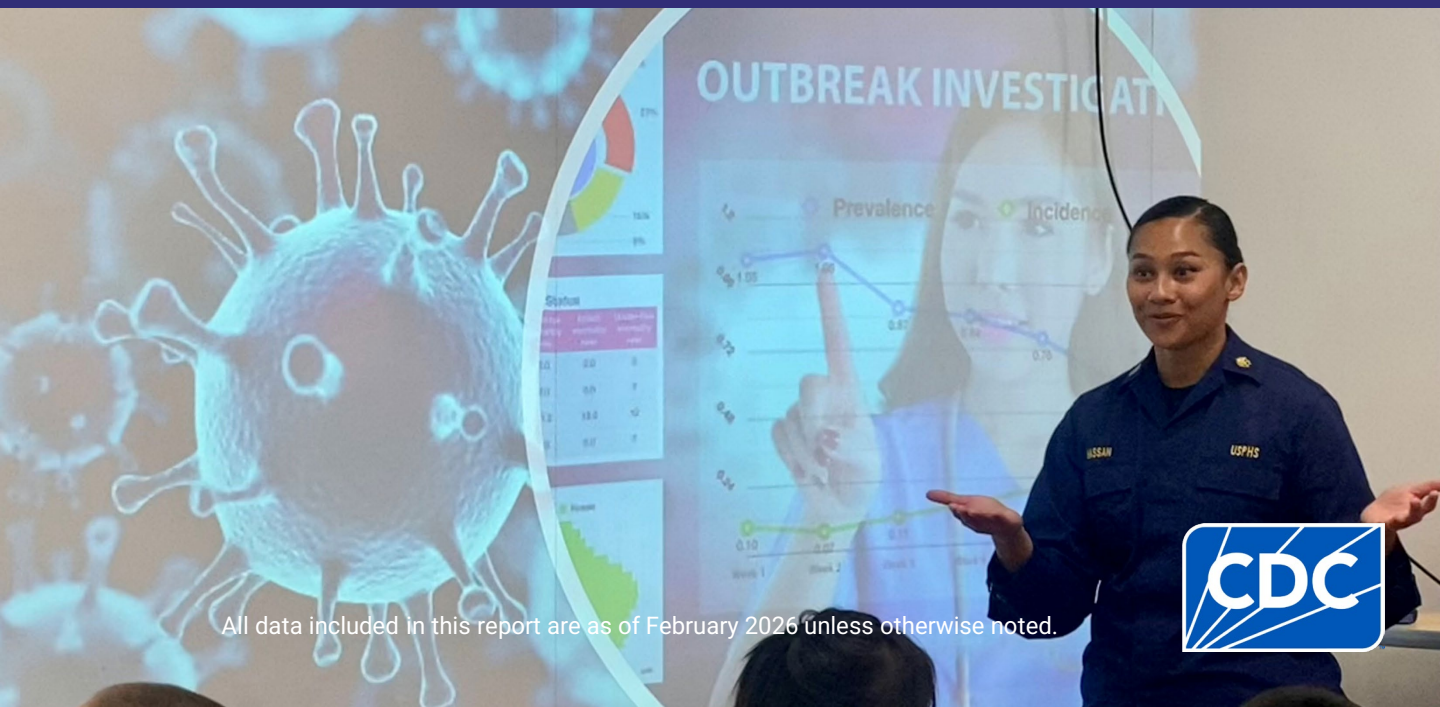
EPIDEMIC INTELLIGENCE SERVICE 2025 ANNUAL UPDATE

TRAINING CDC'S DISEASE DETECTIVES SINCE 1951

95 officers in 2024
and 2025 classes

4,175
alumni

1 mission
24/7



All data included in this report are as of February 2026 unless otherwise noted.



EIS OFFICERS...



serve our country while gaining practical skills to become epidemiologists and future public health leaders.



are doctoral scientists, nurses, physicians, veterinarians, and other health professionals.



complete a 2-year on-the-job training in applied epidemiology.



Elizabeth Garcia (Class of 2024) wears a tick costume at the Pennsylvania Farm Show to draw visitors to the Pennsylvania Department of Health's Lyme disease prevention exhibit and free flu shots.

ON THE JOB



Field Investigations and Response



Epidemiologic Analyses



Oral Presentations



Peer-Reviewed Scientific Manuscripts and Abstracts



Surveillance System Evaluations



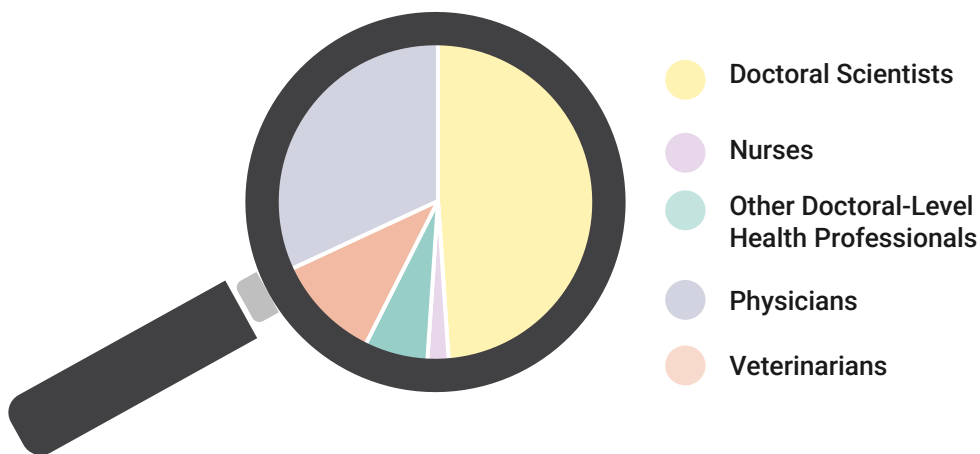
Dumbani Kayira (Class of 2024) collects environmental samples to investigate a September 2025 outbreak of Extended-Spectrum Beta-Lactamases *Klebsiella pneumoniae* (a bacteria that is resistant to many antibiotics) in an acute care hospital.



Emily Silva (Class of 2024) collects environmental samples while investigating a *Salmonella* outbreak at a Minnesota restaurant.

EIS CLASS OF 2025 PROFESSIONAL BACKGROUNDS

The 47 EIS officers in the class of 2025 were selected from 340 applicants.
This class began their fellowship in July 2025.



CLINICAL

15 Physicians

Additional degrees:

- 1 PhD
- 10 MPH
- 1 MSPH
- 1 MBA
- 1 MSc

Physician specialties:

- Emergency medicine
- Family medicine
- Infectious disease
- Internal medicine
- Medical microbiology
- Obstetrics and gynecology
- Pathology
- Pediatric infectious diseases
- Pediatrics
- Preventive medicine

1 Nurse

Additional degrees:

- 1 MPH, MS (in Nursing, Midwife)

3 Other Doctoral-Level Health Professionals

Additional degrees:

- 1 PharmD, MPH
- 1 PharmD, MA
- 1 PharmD

5 Veterinarians

Additional degrees:

- 5 MPH

NON-CLINICAL

23 Doctoral Scientists

Additional degrees:

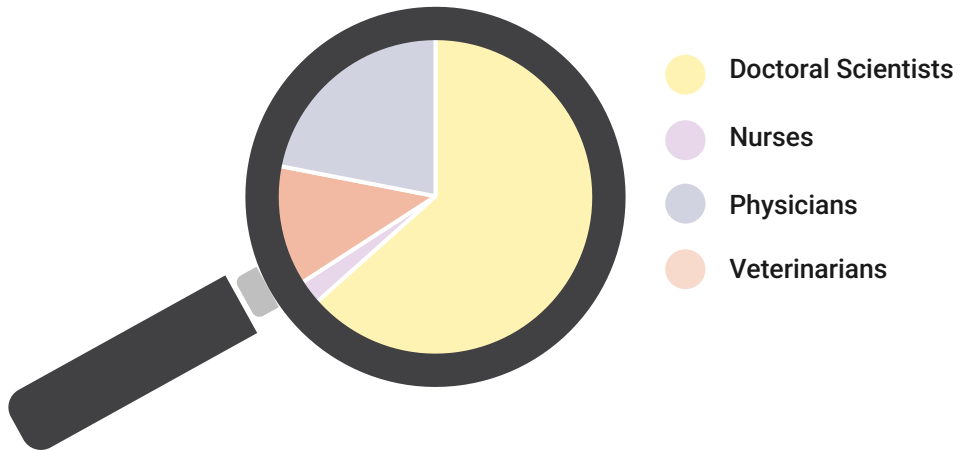
- 13 MPH
- 1 MS, MPH
- 1 MA, MPH
- 1 MSPH
- 1 MS
- 1 MA
- 1 MSc

Disciplines:

- Anthropology
- Behavioral, Social, and Health Education Sciences
- Environmental Health Science
- Epidemiology
- Health Promotion
- Infectious Disease Epidemiology
- Molecular and Cell Biology
- Public Health
- Quantitative Biosciences
- Zoology

INCOMING EIS CLASS OF 2026 PROFESSIONAL BACKGROUNDS

The 40 EIS officers in the class of 2026 were selected from 274 applicants.
This class will begin their fellowship in July 2026.



CLINICAL

9 Physicians

Additional degrees:

- 1 MA, PhD
- 1 MPhil, PhD
- 4 MPH
- 1 MSc

Physician specialties:

- Aerospace medicine
- Anesthesiology
- Dermatology
- Family medicine
- Infectious disease
- Internal medicine
- Occupational medicine

1 Nurse

Additional degrees:

- 1 MS

4 Veterinarians

Additional degrees:

- 2 MPH
- 1 MS, MPH
- 1 MS

NON-CLINICAL

26 Doctoral Scientists

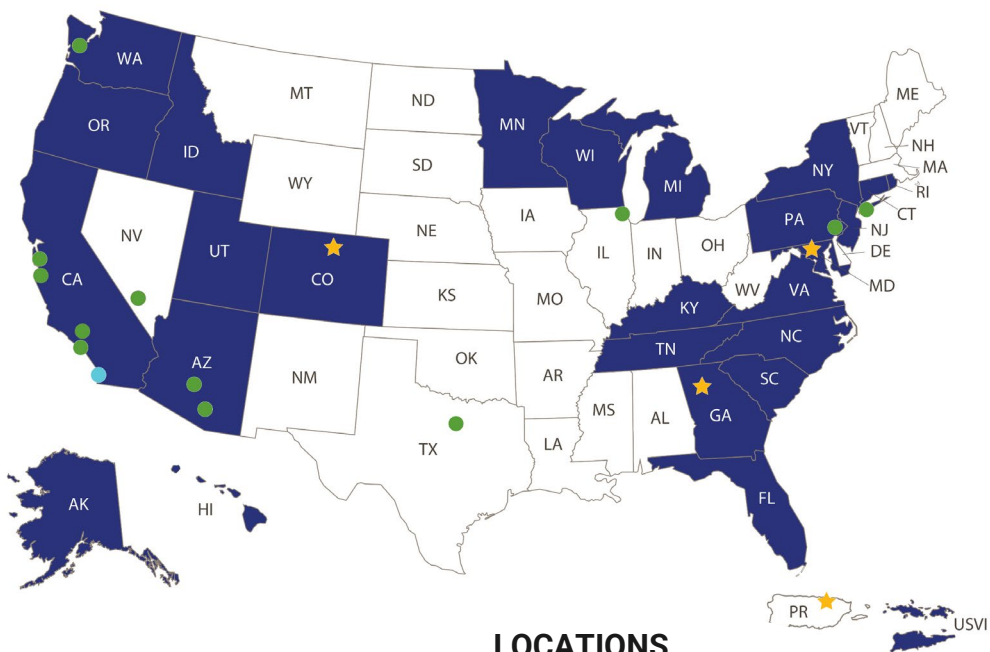
Additional degrees:

- 14 MPH
- 3 MPH, MS
- 1 MHA, MS
- 2 MSPH
- 2 MS
- 2 MSc

Disciplines:

- Control of Diseases
- Environmental Health Sciences
- Epidemiology
- Epidemiology and Biostatistics
- Epidemiology and Clinical Research
- Exercise Science
- Geography
- Global Community Health and Social and Behavioral Sciences
- Human Nutrition
- Molecular Biology
- Nutrition Biology
- Nutrition and Health Sciences
- Public Health

WHERE EIS OFFICERS ARE ASSIGNED



LOCATIONS

- State or territorial health departments (27 officers)
- City, county, tribal, and other partners (14 officers)
- Combined local and federal positions (1 officer)
- ★ CDC headquarters and campuses (53 officers)

2024 and 2025 EIS classes (95 officers)
48 in class of 2024 | 47 in class of 2025

Effective JULY 2025

CDC Host site	Class of 2024	Class of 2025
Global Health Center	5	1
National Center for Chronic Disease Prevention and Health Promotion	4	1
National Center for Emerging and Zoonotic Infectious Diseases	9	10
National Center for Health Statistics	1	1
National Center for HIV, Viral Hepatitis, STD, and TB Prevention	3	1
National Center for Immunization and Respiratory Diseases	7	6
National Center for Injury Prevention and Control	2	1
Office of Readiness and Response	1	0
State, local, county, city, tribal, territorial health department, or other partners	16	26
TOTAL	48	47



Max Weidmann (Class of 2025) inspects a tick drag for lone star nymphs and larvae during early fall tick surveillance.



FIELD INVESTIGATIONS

CDC disease detectives investigate public health problems of an infectious or noninfectious nature, unexplained illnesses, or natural or human-made disasters. This page reflects a sample of EIS officers' rapid response work in Fiscal Year 2025.

Measles



Epi-Aid 2025-005 Measles outbreak in undervaccinated community – Texas, 2025

Helped the Texas State Department of Health Services investigate a measles outbreak in a South Plains, Texas community with low vaccination rates.

Healthcare-Associated Infections



Epi-Aid 2025-002 Undetermined cause and extent of severe adverse reactions following receipt of injectable ceftriaxone in healthcare facilities – Alabama, 2025

Assisted the Alabama Department of Public Health with an investigation into serious reactions, including deaths, after patients received injectable ceftriaxone (antibiotic) at three healthcare facilities in Colbert County, Alabama.

Overdose Prevention



Epi-Aid 2025-009 Investigation of an ongoing outbreak involving emerging drugs - Maryland, 2025

Helped the Maryland Department of Health investigate an ongoing outbreak involving emerging drugs in Cecil County and Baltimore City, Maryland.

Rabies



Epi-Aid 2025-011 Mass bat exposure among individuals staying at Grand Teton National Park lodge – Wyoming, 2025.

Assisted the Wyoming Department of Health with an investigation into a mass bat exposure among guests at a lodge in Grand Teton National Park, Wyoming.

BEYOND EIS

More than

1 in 3

current state epidemiologists
are EIS alumni



44%

of current state public health
veterinarians are EIS alumni

Approximately

90%

of EIS graduates continue in
public health-related positions

