

# Waterborne Infectious Diseases Associated with Exposure to Tropical Cyclonic Storms, United States, 1996–2018

Victoria D. Lynch, Jeffrey Shaman

In the United States, tropical cyclones cause destructive flooding that can lead to adverse health outcomes. Storm-driven flooding contaminates environmental, recreational, and drinking water sources, but few studies have examined effects on specific infections over time. We used 23 years of exposure and case data to assess the effects of tropical cyclones on 6 waterborne diseases in a conditional quasi-Poisson model. We separately defined storm exposure for windspeed, rainfall, and proximity to the storm track. Exposure to storm-related rainfall was associated with a 48% (95% CI 27%–69%) increase in Shiga toxin-producing *Escherichia coli* infections 1 week after storms and a 42% (95% CI 22%–62%) increase in Legionnaires' disease 2 weeks after storms. Cryptosporidiosis cases increased 52% (95% CI 42%–62%) during storm weeks but declined over ensuing weeks. Cyclones are a risk to public health that will likely become more serious with climate change and aging water infrastructure systems.

**T**ropical cyclones are a seasonal occurrence in the Eastern United States, where they cause widespread destruction and endanger public health (1–3). Among many storm-related hazards, extreme flooding is a concern because it can lead to the contamination of recreational, irrigation, and drinking water sources (4–6) and might increase risks for transmission of waterborne infectious diseases (7). Elevated case counts and outbreaks have been attributed to individual storms (8), but the effect of tropical cyclones on specific waterborne infections has not been evaluated over multiple storm seasons. Understanding waterborne pathogen transmission is a pressing public health challenge because the burden of disease will likely in-

crease in conjunction with an aging population (9), deteriorating drinking and wastewater treatment systems (10), and increased storm-related flooding due to climate change (11).

Bacterial, parasitic, and viral pathogens cause ≈7.15 million cases of waterborne disease annually in the United States (12). Infections are typically mild but can lead to life-threatening enteric or respiratory illness for immunocompromised, young, or elderly persons (13,14). Cyclonic storms drive transmission because floodwater mobilizes pathogens in the environment and inundates water system infrastructure, which causes further contamination through ineffective treatment or sewage overflows (15,16). After cyclonic storms, high pathogen loads frequently are detected in floodwater (17,18) and in environmental and drinking water sources (19–21). Floods also can contaminate irrigation water used on crops (22); therefore, flood-driven contamination can influence transmission of pathogens that are predominantly foodborne.

However, contamination does not necessarily lead to transmission; although extreme weather events have been associated with gastrointestinal illness or specific outbreaks (23–25), some storms have been found to have no effect on incidence of cases (26). Those inconsistent associations reflect the relevance of pathogen-specific factors, particularly pathogen biology and primary reservoirs, in determining the effects of storms on transmission.

Pathogens that form oocysts or are members of biofilm communities persist in environmental waters for weeks, which can increase the likelihood of transmission (27,28), whereas pathogens that do not persist in the environment might be flushed from waterways by flooding (29). Pathogen biology also affects the efficacy of water treatment; in particular,

Author affiliation: Columbia University, New York, New York, USA

DOI: <https://doi.org/10.3201/eid2908.221906>

*Cryptosporidium* and *Legionella* are resistant to common decontamination methods (30,31), whereas *Giardia* is readily removed from water (32).

Cyclonic storms can also lead to different types of contamination depending on the land use and drinking water or sanitation infrastructure of affected regions. Cattle and poultry are the primary reservoirs for several gastrointestinal pathogens, and flooding near livestock production can contaminate drinking water sources with animal waste (33). Flooding near livestock production is of particular concern in rural agricultural regions where many persons rely on private wells that are untreated and vulnerable to inundation (34). On the other hand, storms in densely populated areas often lead to floodwater contaminated with human sewage (35). Urban flooding also can damage water treatment or distribution systems that serve entire cities, leading to large outbreaks (36).

The effect of cyclonic storms on waterborne disease also might depend on storm characteristics that determine the extent of flooding and destruction. Storms are generally defined by windspeed and rainfall, factors that are often weakly correlated with each other upon landfall (37) and lead to different conditions in affected areas. Slow-moving storms tend to cause greater accumulation of rain and more severe flooding, whereas tropical cyclones with high windspeeds might bring less rain but cause wind-related property or infrastructure destruction (1,38). Storm type also could dictate disaster management decisions and individual-level responses, such as the ability to comply with evacuation orders. In addition, storm severity influences healthcare-seeking behavior and healthcare infrastructure. Storm-related disruptions might dissuade persons with mild or moderate conditions from seeking care (39), whereas catastrophic storms can prevent persons with urgent needs from accessing healthcare systems (40).

Storm severity is projected to increase with atmospheric warming, so developing a thorough understanding of storm effects on waterborne diseases could aid climate change adaptation and public health policies. Previous research has largely focused on specific storms and outbreaks or on nonspecific gastrointestinal illness; however, associations over multiple storm seasons have not been thoroughly examined. In this study, we examined the effects of tropical cyclones on waterborne infectious diseases over more than a decade and determined whether those associations varied by pathogen or type of storm exposure.

## Methods

### Data

#### Case data

We used surveillance data from the National Notifiable Diseases Surveillance System (NNDSS; <https://www.cdc.gov/nndss>) to identify weekly cases of cryptosporidiosis, giardiasis, Legionnaires' disease, *Escherichia coli* infections, salmonellosis, and shigellosis during 1996–2018 for each US state. Those infections are caused by parasitic (*Cryptosporidium* and *Giardia*), biofilm-forming bacterial (*Legionella*), and enteric bacterial (*E. coli*, *Salmonella*, *Shigella*) pathogens that can lead to severe gastrointestinal or respiratory illness. Of the 6 *E. coli* strains, NNDSS only tracks Shiga toxin-producing *E. coli* (STEC) infections.

The data consist of laboratory-confirmed cases from hospitalizations, emergency department visits, and primary care visits that are reported to local health departments and compiled by state health departments to submit to the Centers for Disease Control and Prevention (CDC), which manages the NNDSS and case definitions (Appendix Table 1, <https://wwwnc.cdc.gov/EID/article/29/8/22-1906-App1.pdf>). We restricted our analyses to the 30 states and Washington, DC, that experienced  $\geq 1$  tropical cyclone during the study period and to June–November, the months of the Atlantic storm season. We also used US Census data (9) to determine county and state populations during the study period.

#### Storm Data

We obtained storm track, windspeed, and rainfall data for tropical cyclones that made landfall in the United States during 1996–2018 from the hurricane-exposure version 0.1.1 and hurricaneexposedata version 0.1.0 packages in R (R Foundation for Statistical Computing, <https://www.r-project.org>). For each county, we defined the primary exposure day as the day with the shortest distance between the county center and the storm track. We used storm track and surface windspeed data from the National Hurricane Center's HURDAT-2 dataset (<https://www.nhc.noaa.gov/data>) and included maximum and sustained windspeeds on the primary exposure day. We used rainfall data from the North American Land Data Assimilation System 2 (<https://ldas.gsfc.nasa.gov/nldas>) and included in our dataset the total daily rainfall in each exposed county from 5 days before to 3 days after the primary exposure day. To inform the selection of exposure variables used in the analysis, we assessed correlations among

distance, wind, and rainfall variables, including total and daily maximum rainfall.

### Storm Exposure Definition

Informed by the correlation analysis of storm variables, we defined county-level exposure to storms according to total rainfall, maximum sustained windspeed, and distance from the storm track. In the primary analysis, we defined exposure separately for each variable and repeated the analyses using several exposure thresholds. We considered counties exposed when they experienced 50, 75, or 100 mm of total rainfall associated with the storm or were within 500, 250, or 150 km of the storm track. The National Oceanic and Atmospheric Administration categorizes cyclones as tropical storms or hurricanes on the basis of windspeed (<https://www.nhc.noaa.gov/climo>); consistent with those definitions, we considered counties exposed to tropical storms when maximum sustained windspeeds were  $\geq 34$  knots but  $< 64$  knots (gale-force wind on the Beaufort scale) and exposed to hurricanes when maximum sustained windspeeds were  $\geq 64$  knots. We assessed correlations among the exposure thresholds. To determine state-level exposure, we calculated the percent of the state population in exposed counties during storm weeks and classified the state as exposed if 75%, 50%, 25%, 5%, or any ( $> 0\%$ ) of the population was exposed; we repeated the analysis for each of those population thresholds.

In the secondary analysis, we combined storm exposure variables to describe categories of cyclonic storms. We categorized storms as high rain-high wind if total rainfall was  $\geq 100$  mm and windspeed was  $\geq 64$  knots; as high rain-low wind if total rainfall was  $\geq 100$  mm and windspeed was  $\geq 34$  but  $< 64$  knots; and as low rain-low wind if total rainfall was  $< 100$  mm and windspeeds were  $\geq 34$  but  $< 64$  knots. We did not include a low rain-high wind category because no storms met that definition. We considered counties exposed to a specific storm type if the storm met both the rainfall and windspeed criteria. Hurricane-force winds are rare and usually affect a small proportion of a state's population (Appendix Table 2); therefore, we defined state population exposure thresholds only by rainfall exposure, as in the primary analysis. We considered a state exposed to a given storm type if it met the rainfall-based population exposure threshold (e.g., for a 25% population-exposure threshold,  $\geq 25\%$  of the state's population had to be exposed to storm-related rainfall) and any of the counties were exposed to the given storm type.

### Statistical Analysis

We modeled the association between exposure to tropical cyclones and case rates by using a conditional quasi-Poisson model (Appendix), which accounted for overdispersion in the case data (41). We compared case rates in weeks with and without storms across matched strata based on state and week of the year. That structure addressed potential confounding due to variation among states (i.e., different state policies regarding storm preparedness or case reporting) and controlled for seasonality. We modeled cyclonic storm occurrence as a binary exposure variable and lagged from 0 to 3 weeks to account for the incubation periods of the pathogens and the potential for delays in seeking healthcare after destructive storms. The model included a flexibly adjusted term for year to control for long-term trends that could affect storm exposure or waterborne infectious disease transmission. We used annual state population as an offset to obtain the rate of cases and we modeled case rates for each pathogen separately. We repeated the analysis for all exposure definitions and population exposure thresholds. We used the Bonferroni-Holmes method to adjust 95% CIs for multiple comparisons. Finally, we repeated the method with counties stratified by drinking water source or for rural or urban location (Appendix).

### Results

The number of cases reported to NNDSs varied by pathogen, and most infections involved enteric bacteria (Table 1). Most infections peaked in the late summer or early fall, but the amplitude of seasonality differed among pathogens and by geographic region (Figure 1). Cryptosporidiosis exhibited the strongest and most consistent seasonality; cases peaked in September in all geographic regions. In most states, Legionnaires' disease and parasitic infections displayed only a moderate increase during summer months (Appendix Figure 1). Enteric bacterial infections were more common across all states, and salmonellosis showed a strong summer seasonality in most states (Appendix Figure 2). During 1996–2018, Legionnaires' disease and cryptosporidiosis cases increased, and giardiasis decreased, in all geographic regions; the other infections were relatively consistent over time (Appendix Figure 3). The burden of disease also varied by geographic region; salmonellosis and shigellosis cases were more common in the Southeast, but Legionnaires' disease was concentrated in the Mid-Atlantic region (Appendix Figure 4). *E. coli* infections, cryptosporidiosis, and giardiasis were all more common in the Upper Midwest and New England states than in other geographic regions (Appendix Figure 4).



**Table 1.** Description of pathogens included in analysis of waterborne infectious diseases associated with exposure to tropical cyclonic storms, United States, 1996–2018\*

Pathogen	No. (%) cases in NNDSS	Pathogen type	Incubation period, d (range) <sup>†</sup>	Estimated cases attributed to waterborne transmission, % <sup>‡</sup>	Years reported in NNDSS
<i>Legionella</i>	77,765 (3.8)	Biofilm-forming bacteria	5–6 (2–10)	97	1996–2018
<i>Cryptosporidium</i>	151,573 (7.4)	Parasite	7 (2–12)	43	1998–2018
<i>Giardia</i>	297,379 (14.6)	Parasite	7 (1–14)	44	2002–2018
STEC	128,332 (6.3)	Enteric bacteria	0.5–4 (0.5–10)	5	1996–2018
<i>Salmonella</i>	964,293 (47.3)	Enteric bacteria	0.5–2 (0.5–16)	6	1998–2016
<i>Shigella</i>	421,369 (20.4)	Enteric bacteria	1–3 (0.5–7)	4	1998–2018

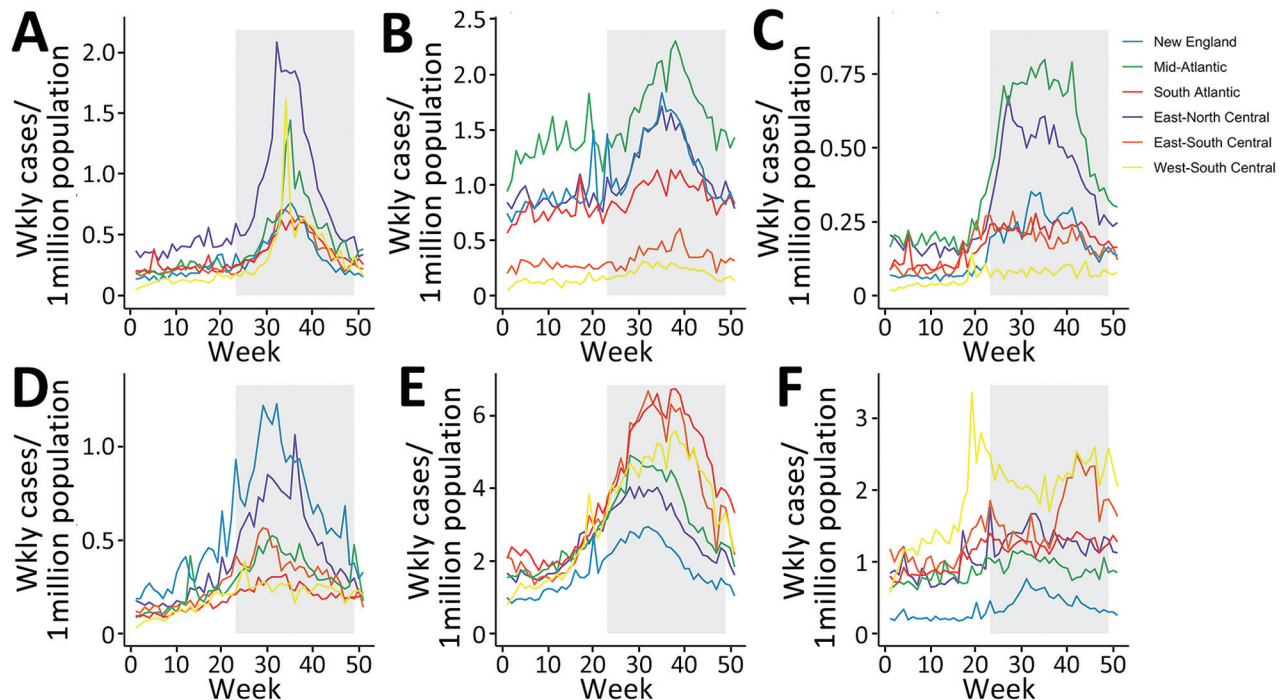
\*NNDSS, National Notifiable Disease Surveillance System (<https://www.cdc.gov/nndss>); STEC, Shiga toxin–producing *Escherichia coli*.

<sup>†</sup>According to D.W.K. Acheson (42).

<sup>‡</sup>According to S.A. Collier et al. (12).

Wind, rainfall, and distance variables were not highly correlated, but different measures of the same variable, such as maximum rainfall and total rainfall, were correlated (Appendix Figure 4). Among the storm variable thresholds used to determine county-level exposure, hurricane- and gale-force wind exposure were not highly correlated ( $r = 0.21$ ), but  $\geq 50$ -mm,  $\geq 75$ -mm, and  $\geq 100$ -mm rainfall exposure thresholds were highly correlated ( $r = 0.50$ – $0.72$ ) (Appendix Figure 5).

Using the most inclusive storm exposure threshold, gale-force wind, 134 cyclonic storms occurred during the study period (Table 2). Those storms affected 2,363 counties in 30 states and Washington, DC, over 177 weeks. Counties with the greatest number of weeks of gale-force wind exposure storms were concentrated along the coast, particularly in North and South Carolina (Figure 2). Exposure to  $\geq 75$  mm of rainfall was most common in South Florida but was overall more



**Figure 1.** Average weekly cases by geographic region in a study of waterborne infectious diseases associated with exposure to tropical cyclonic storms, United States, 1996–2018. Graphs indicate weekly number of cases per 1,000,000 populations for the following waterborne diseases: A) cryptosporidiosis; B) giardiasis; C) Legionnaires' disease; D) *Escherichia coli* infection; E) salmonellosis; and F) shigellosis. Not all infections were reported for the entire study period (Table 1). The shaded region represents the weeks encompassed in the annual Atlantic storm season, June 1–November 30. The geographic regions reflect the reporting areas used for infectious disease surveillance in the National Notifiable Diseases Surveillance System (<https://www.cdc.gov/nndss>). The New England region comprises the states of Connecticut, Maine, Massachusetts, New Hampshire, Rhode Island, and Vermont; the Mid-Atlantic Region comprises New Jersey, New York, and Pennsylvania; the South-Atlantic Region comprises Delaware, Florida, Georgia, Maryland, North Carolina, South Carolina, Virginia, West Virginia, and Washington, DC; the East-North Central Region comprises Illinois, Indiana, Michigan, Ohio, and Wisconsin; the East-South Central Region comprises Alabama, Kentucky, Mississippi, and Tennessee; and the West-South Central Region comprises Arkansas, Louisiana, Oklahoma, and Texas.

**Table 2.** Cyclonic storm exposure definitions used to assess waterborne infectious diseases associated with exposure to tropical cyclonic storms, United States, 1996–2018

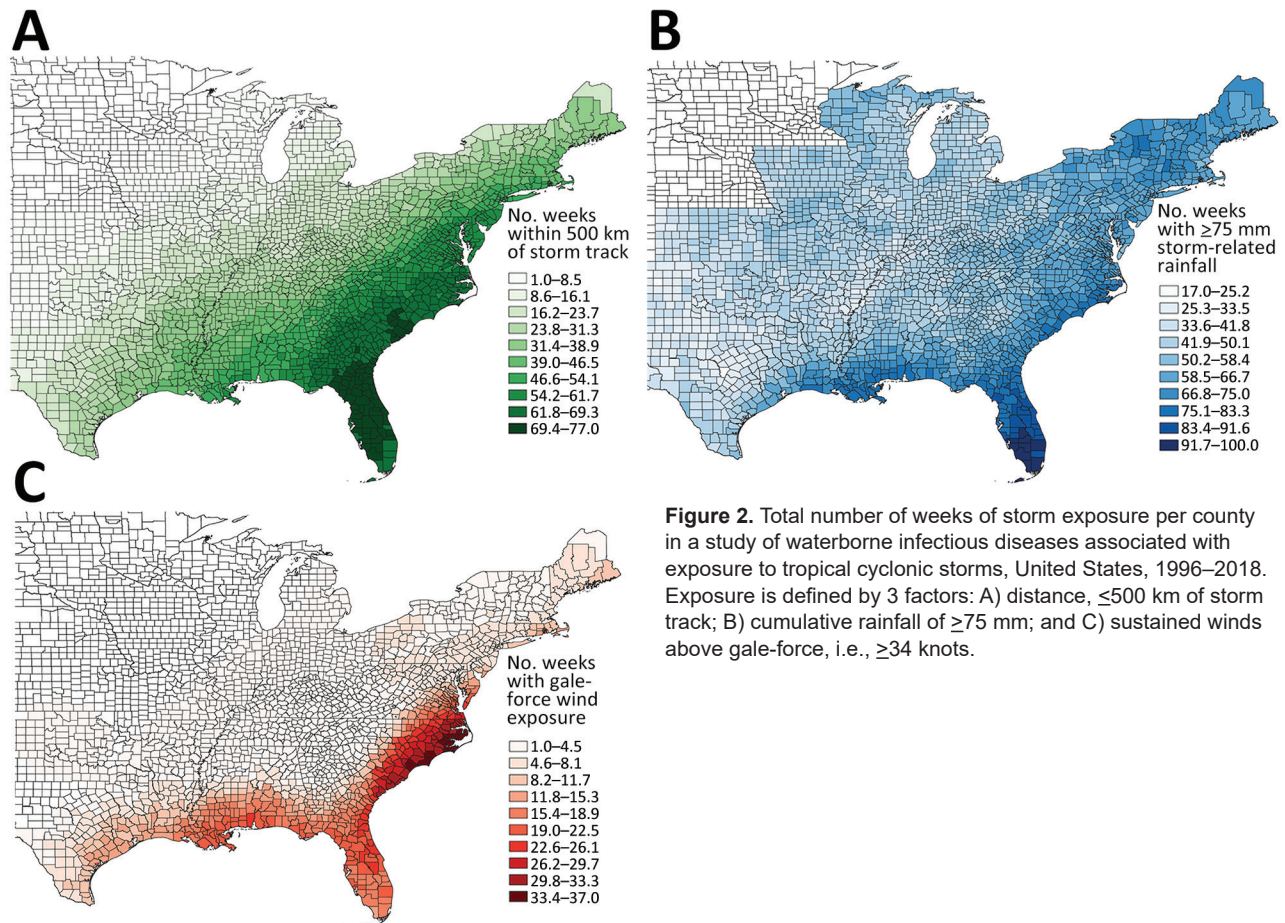
Storm exposure variables, definition	No. storms	No. counties affected
Total rainfall, mm		
50	98	2,165
75	96	2,041
100	87	1,732
Sustained wind gusts*		
Gale-force winds	134	1,025
Hurricane-force winds	31	136
Distance from storm track, km		
500	134	2,363
250	134	2,179
150	117	2,072

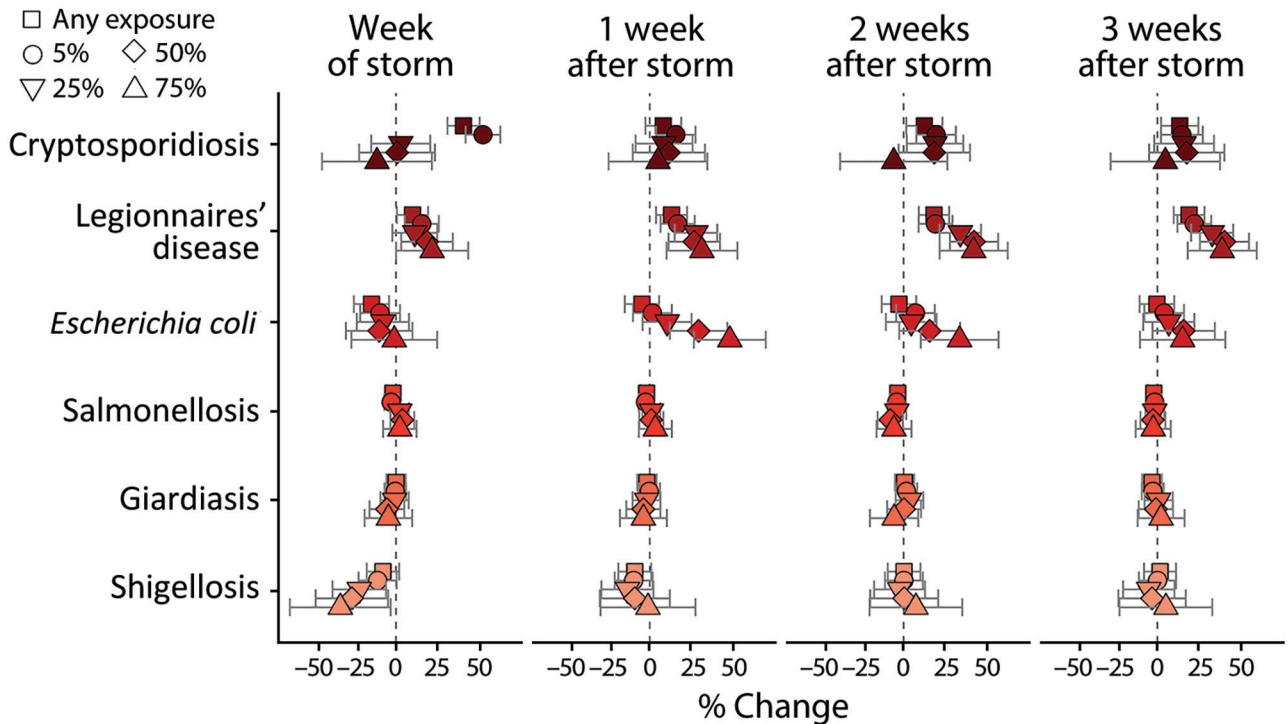
\*National Oceanic and Atmospheric Administration (<https://www.noaa.gov>) designates tropical storms as those with gale-force winds, defined as  $\geq 34$  knots to  $< 64$  knots, and hurricane-force winds as  $\geq 64$  knots.

widespread and uniform than the wind and distance metrics (Figure 2). We noted no long-term trend in the number of cyclonic storms during the study period (Appendix Figure 6).

Cryptosporidiosis case rates greatly increased during storm weeks at low population exposure

thresholds; storms that brought  $\geq 75$  mm of rainfall were associated with a 40% increase in case rates when any of the state's population was exposed and a 52% increase when  $\geq 5\%$  of the population was exposed (Figure 3). Similar associations persisted across lagged exposures, but the effects were weaker, ranging from 12%–20% increases in the poststorm weeks (Appendix Table 3). Legionnaires' disease case rates were also highly associated with storm exposure, but the effect was strongest 2 and 3 weeks after a storm and at higher population exposure thresholds (Figure 3). When 75% of the state population was exposed to a storm, case rates increased by 31% in lag week 1, 42% in lag week 2, and 39% in lag week 3 (Appendix Table 3). *E. coli* case rates exhibited a clearer peak and decline associated with lagged storm events. After an initial decrease during the storm week, case rates increased 48% in week 1 and 33% in week 2 post storm when 75% of the state's population was exposed (Figure 3). Salmonellosis and giardiasis were not greatly associated with storm exposure, and shigellosis case rates slightly decreased during storm weeks (Figure 3).

**Figure 2.** Total number of weeks of storm exposure per county in a study of waterborne infectious diseases associated with exposure to tropical cyclonic storms, United States, 1996–2018. Exposure is defined by 3 factors: A) distance,  $\leq 500$  km of storm track; B) cumulative rainfall of  $\geq 75$  mm; and C) sustained winds above gale-force, i.e.,  $\geq 34$  knots.



**Figure 3.** Average percent change in weekly case rates in a study of waterborne infectious diseases associated with exposure to tropical cyclonic storms, United States, 1966–2018. Estimated percentage change (shapes) and Bonferroni-corrected 95% CI (bars) are reported for each infectious disease and population-exposure threshold. Estimates are reported for week of the storm (week 0) and 1–3 weeks after the storm and are associated with exposure to  $\geq 75$  mm of storm-related rainfall.

The associations between storm-related rainfall and cryptosporidiosis, Legionnaires' disease, and *E. coli* case rates were consistent across different exposure definitions (Figure 4). Storms with less ( $\geq 50$  mm) or more ( $\geq 100$  mm) rainfall were associated with substantial initial increases in cryptosporidiosis cases that attenuated over lag weeks 1–3. The strength of the association between Legionnaires' disease case rates and storm exposure increased in conjunction with population exposure threshold and amount of rainfall (Figure 4). Similarly, the lagged increase in *E. coli* rates was more pronounced in storms with  $\geq 100$  mm of rainfall. The associations between case rates and storm exposure were similar when exposure was defined by distance from the storm track instead of rainfall (Appendix Figure 7). Stratifying exposure by drinking water source or rural or urban location also yielded similar results; the lagged effect on *E. coli* and Legionnaires' disease rates was slightly more pronounced when restricted to rural or groundwater-reliant counties, but associations were otherwise consistent (Appendix).

Storm exposure defined by hurricane-force winds was associated with increased cryptosporidiosis case rates 2 and 3 weeks after storms, but otherwise had

no effect on rates (Appendix Figure 8). Conversely, gale-force wind exposure was associated with decreased cryptosporidiosis and giardiasis rates during the storm week and had no effect in the lagged weeks after storms (Appendix Figure 8).

Combining wind and rainfall exposure in storm type categories supported the findings of the wind exposure analysis. High rain–high wind, high rain–low wind, and low rain–low wind storms were all associated with decreased giardiasis case rates during the storm week before returning to baseline 1 week poststorm (Figure 5). Consistent with the rainfall analysis, high rain–low wind storms were positively associated with cryptosporidiosis rates up to 2 weeks poststorm, but unlike for rainfall alone, cases also increased 3 weeks after high rain–high wind and low rain–low wind storms: a 58% increase in cryptosporidiosis rates when  $\geq 5\%$  of the population was exposed to high wind–high rain storms and a 17% increase after low rain–low wind storms (Figure 5).

## Discussion

In this analysis, we found tropical cyclones were associated with waterborne diseases, although the effect magnitude varied by exposure. The associations also



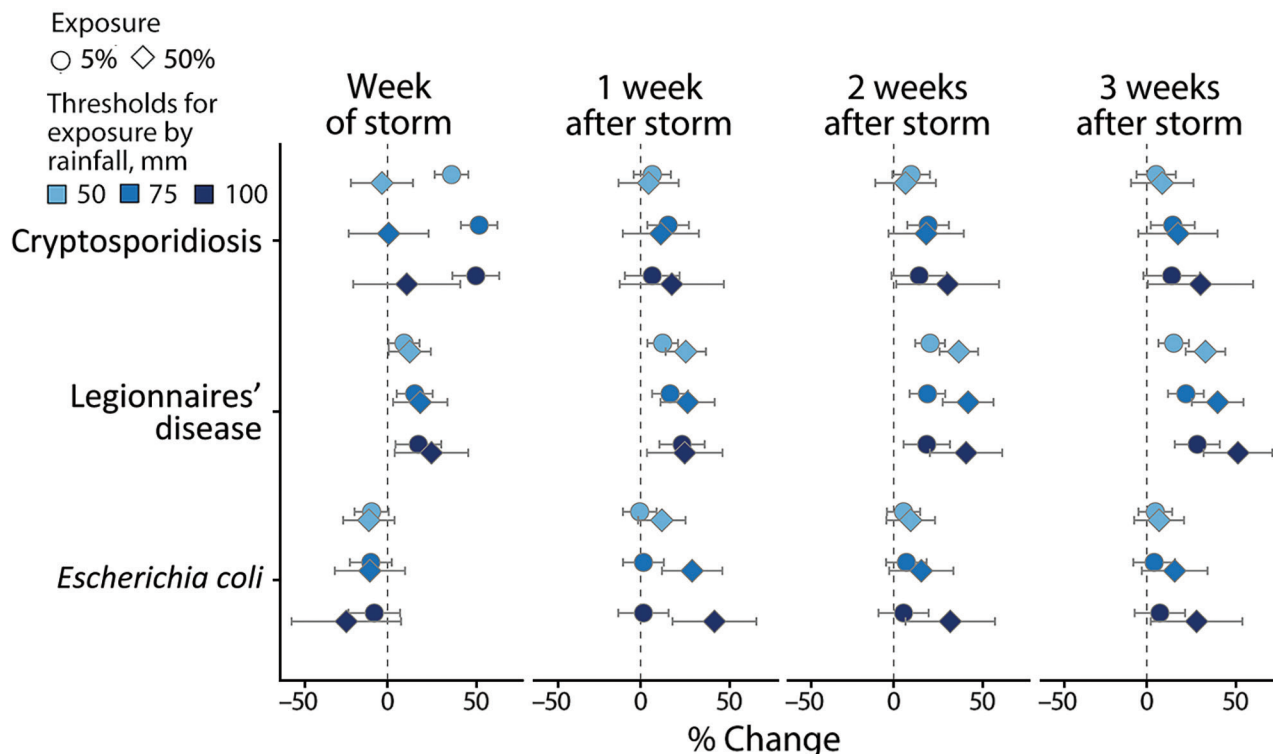
differed among the specific pathogens; Legionnaires' disease, *E. coli*, and cryptosporidiosis rates increased with rainfall, whereas salmonellosis, shigellosis, and giardiasis rates were unaffected, or decreased, during storm weeks. Those divergent associations likely reflect factors that mediate the relationship between storms and disease, including pathogen biology, transmission routes, and severity of infection.

Legionnaires' disease and *E. coli* case rates consistently increased with rainfall and population exposure thresholds, but the timing of the effects differed between these infections. *E. coli* rates peaked 1 week after storms and returned to baseline by week 3, whereas Legionnaires' disease rates were highest 3 weeks after storms. Those findings support microbiological studies that have analyzed bacterial counts in streams and water systems after specific hurricanes (43,44); elevated *E. coli* loads were reported 12–24 hours after a storm started, whereas *Legionella* increased 4–5 days later (43). *Legionella* are natural inhabitants of aquatic environments and replicate in water, typically in biofilm communities that colonize household plumbing and water infrastructure systems (13,45). Thus, the *Legionella* load can increase

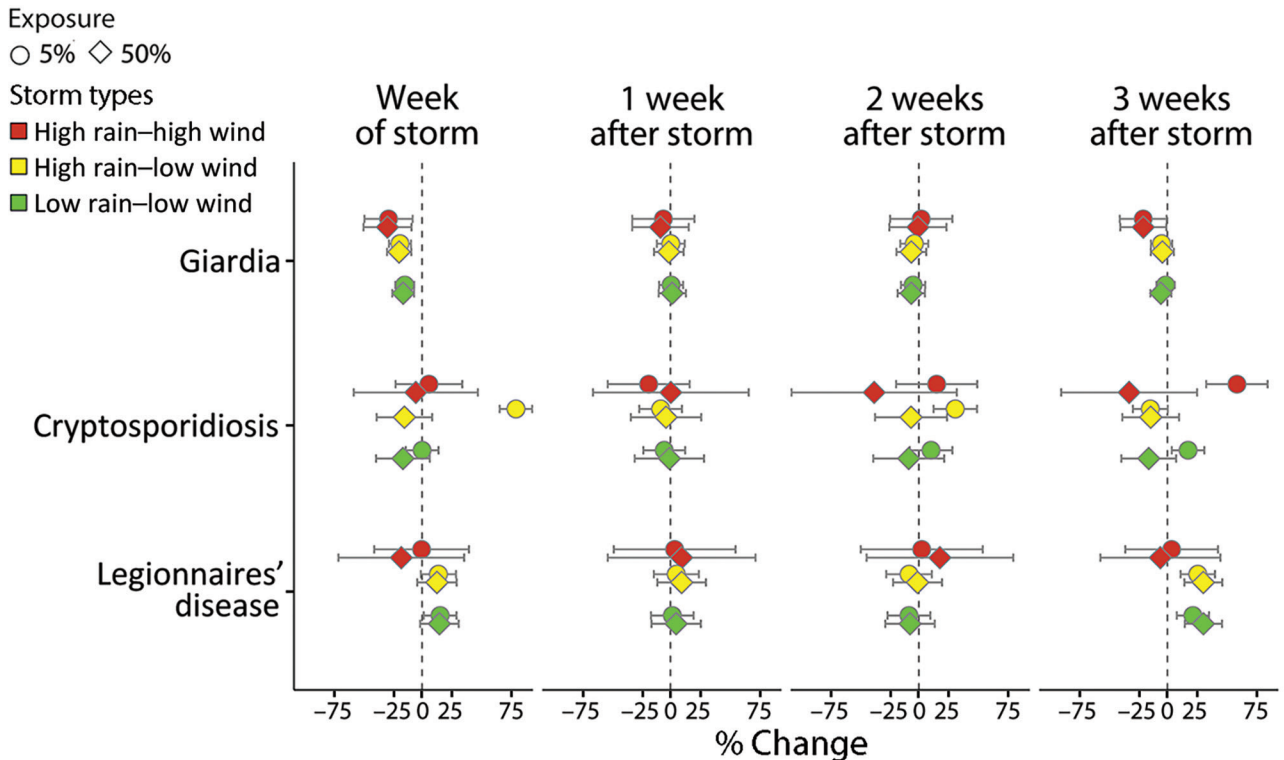
over time, whereas other bacterial pathogens that do not replicate in the environment typically have bacterial loads that peak after the initial contamination event and dissipate over time (46).

Cryptosporidiosis case rates also increased with storm-related rainfall but only at low population thresholds and concurrent with the storm week. Cryptosporidiosis cases were most common in the north-central Midwest, a region that infrequently experiences tropical storms or hurricanes severe enough to affect >25% of the population. The substantial increase in cases concurrent with storm weeks might be driven by several widespread outbreaks attributed to specific storm events that damaged water treatment facilities (47). *Cryptosporidium* is resistant to standard chemical disinfectants and is small enough to pass through sand filtration systems common in water treatment plants (29); thus, when the parasite contaminates water distribution systems that serve large populations, massive outbreaks can occur (8).

County-level exposure to heavy rainfall and cyclonic windspeed often were uncorrelated, which is characteristic of tropical cyclones (37), and the effect of extreme wind on cases differed from that of rainfall



**Figure 4.** Average percent change in weekly case rates associated with exposure to storm-related rainfall in a study of waterborne infectious diseases associated with exposure to tropical cyclonic storms, United States, 1996–2018. Exposure is defined by 3 cumulative rainfall thresholds,  $\geq 50$  mm,  $\geq 75$  mm, or  $\geq 100$  mm; and for 2 population-exposure thresholds, 5% or 50% exposed. Estimates (shapes) and Bonferroni-corrected 95% CIs (bars) are reported for cryptosporidiosis, Legionnaires' disease, and *Escherichia coli* infections for the week of the storm (week 0) and 1–3 weeks after the storm.



**Figure 5.** Average percent change in weekly waterborne infectious disease case rates associated with exposure to tropical cyclonic storm types, United States, 1996–2018. Exposure is defined by 3 categories according to rainfall and wind thresholds: high rain–high wind (red); high rain–low wind (yellow); and low rain–low wind (green). Estimates (shapes) and Bonferroni-corrected 95% CIs (bars) are reported for giardiasis, cryptosporidiosis, and Legionnaires' disease at 2 population-exposure thresholds (shape) for the week of the storm (week 0) and 1–3 weeks after the storm. The population-exposure thresholds refer to the percentage of the state population exposed to storm-related rainfall only; no hurricane-force winds affected >25% of the state population.

for several infections. Gale-force wind was associated with a lagged increase in Legionnaires' disease, but the effect on *E. coli* and cryptosporidiosis was minimal; hurricane-force wind was only associated with increased cryptosporidiosis rates 3 weeks after storms. Such attenuated effects could reflect the intricate, and possibly opposing, factors that influence transmission. High windspeeds are typically associated with destructive storms that can damage sanitation infrastructure, increasing the probability of transmission (18), but also could lead to population displacement (48), reducing the likelihood that persons will have contact with contaminated water. Extreme storms can also disrupt healthcare systems or alter healthcare-seeking behavior, which can lead to a reduction in detecting or reporting cases (49).

For areas that experienced both rainfall and cyclonic wind, we combined exposures into storm-type categories; the results underscored the necessity for pathogen-specific analyses and the limitations inherent in studying events that rarely occur. The high rain–high wind category encompassed the most

devastating storms that occurred during the study period, including Hurricanes Katrina and Ivan, but represented a small fraction of all storms. Those events were associated with a substantial decrease in giardiasis but had no effect on Legionnaires' disease. *Giardia* transmission often occurs in recreational waters, such as swimming pools and rivers, and might be thwarted during storm weeks, when the population is less likely to engage in recreational activities. On the other hand, the burden of Legionnaires' disease was highest in regions that infrequently experience hurricane-force winds. High rain–high wind storms were associated with a substantial increase in cryptosporidiosis cases 3 weeks after storms, but the effect might have been driven by a 2-month span in 2008 when Texas experienced 2 hurricanes and a third tropical cyclone in succession and reported extremely high cryptosporidiosis case counts for an extended period.

Unlike the other infections, salmonellosis was unaffected by cyclonic storms at all population thresholds. *Salmonella* transmission is predominantly foodborne, and outbreaks attributed to contaminated



food are common, particularly during the summer (42). The high frequency of salmonellosis outbreaks makes it difficult to detect elevated case counts associated with storms because comparison weeks for storms coincide with those for foodborne outbreaks. Storm-related rainfall was associated with a slight decrease in shigellosis at high population thresholds during storm weeks. Shigellosis is typically mild, and the negative association might reflect a reduction in seeking healthcare for minor illnesses after disruptive storm events.

Except for shigellosis, other disease cases studied exhibited a summer seasonality that coincided with the cyclonic storm season in the United States. However, the inconsistent associations between storms and specific pathogens demonstrated that the effects were not simply driven by overlapping seasonal patterns. Salmonellosis and *E. coli* cases peaked during the same weeks in most regions, but storm-related rainfall had no effect on salmonellosis and a strong positive effect on *E. coli*. This study demonstrated the need for more pathogen-specific analyses that combine microbiological water quality data from multiple sources with epidemiologic data.

One limitation of this study is the spatial mismatch between cases and storm data. Aggregating from county- to state-level storm exposure introduced the possibility of misclassification bias because state-level exposure might be inconsistent with the conditions experienced by cases. We aimed to address this limitation by repeating the analysis at several population thresholds to define exposure and by assessing the consistency of the associations. That type of nondifferential misclassification would also be biased toward the null and underestimate the associations (50). Another limitation resulted from the spatial resolution, which only enabled us to perform a rough estimate of the effect of storms stratified by drinking water source or rural or urban location using county-level averages. Highly resolved water source and location data could provide insight into the mechanisms underlying the associations between storms and some waterborne diseases.

In summary, we found that tropical cyclones represent a risk to public health in the United States, although findings for individual pathogens varied. The US sanitation infrastructure is aging (10), and the country will likely experience more severe storm-related flooding as a result of climate change (11). Thus, identifying the drivers of pathogen transmission, and opportunities for intervention, will be crucial to reducing disease burden after cyclonic storm events.

V.L. was supported by a training grant from the National Institutes of Health (NIH; grant no. T32ES023770); both authors were supported by NIH grant no. R01AI163023. This study had no funding for its design, data analysis or interpretation, or writing.

J.S. and Columbia University disclose partial ownership of SK Analytics. J.S. discloses consulting for Business Network International (BNI).

## About the Authors

Dr. Lynch is a postdoctoral researcher in the Environmental Health Sciences Department at Columbia University Mailman School of Public Health, New York, NY, USA. Her research interests include infectious disease epidemiology and extreme climatic events, particularly their effect on exacerbating health disparities. Dr. Shaman is professor of environmental health sciences at Columbia Mailman School of Public Health, and a professor and associate dean at Columbia Climate School, New York. His primary research interests include the use of mathematical and statistical models to describe, understand, and forecast the transmission dynamics of infectious diseases, and to investigate the broader effects of climate and weather on human health.

## References

- Rappaport EN. Fatalities in the United States from Atlantic tropical cyclones: new data and interpretation. *Bull Am Meteorol Soc.* 2014;95:341–6. <https://doi.org/10.1175/BAMS-D-12-00074.1>
- Parks RM, Anderson GB, Nethery RC, Navas-Acien A, Dominici F, Kioumourtzoglou MA. Tropical cyclone exposure is associated with increased hospitalization rates in older adults. *Nat Commun.* 2021;12:1545. <https://doi.org/10.1038/s41467-021-21777-1>
- Erickson TB, Brooks J, Nilles EJ, Pham PN, Vinck P. Environmental health effects attributed to toxic and infectious agents following hurricanes, cyclones, flash floods and major hydrometeorological events. *J Toxicol Environ Health B Crit Rev.* 2019;22:157–71. <https://doi.org/10.1080/10937404.2019.1654422>
- Young I, Smith BA, Fazil A. A systematic review and meta-analysis of the effects of extreme weather events and other weather-related variables on *Cryptosporidium* and *Giardia* in fresh surface waters. *J Water Health.* 2015;13:1–17. <https://doi.org/10.2166/wh.2014.079>
- Andrade L, O'Dwyer J, O'Neill E, Hynds P. Surface water flooding, groundwater contamination, and enteric disease in developed countries: A scoping review of connections and consequences. *Environ Pollut.* 2018;236:540–9. <https://doi.org/10.1016/j.envpol.2018.01.104>
- Weller D, Brassill N, Rock C, Ivanek R, Mudrak E, Roof S, et al. Complex interactions between weather, and microbial and physicochemical water quality impact the likelihood of detecting foodborne pathogens in agricultural water. *Front Microbiol.* 2020;11:134. <https://doi.org/10.3389/fmicb.2020.00134>

7. Craun GF, Brunkard JM, Yoder JS, Roberts VA, Carpenter J, Wade T, et al. Causes of outbreaks associated with drinking water in the United States from 1971 to 2006. *Clin Microbiol Rev.* 2010;23:507–28. <https://doi.org/10.1128/CMR.00077-09>
8. Cann KF, Thomas DR, Salmon RL, Wyn-Jones AP, Kay D. Extreme water-related weather events and waterborne disease. *Epidemiol Infect.* 2013;141:671–86. <https://doi.org/10.1017/S0950268812001653>
9. US Census Bureau. Demographic turning points for the United States: population projections for 2020 to 2060 [cited 2022 Jul 11]. <https://www.census.gov/content/dam/Census/library/publications/2020/demo/p25-1144.pdf>
10. Allaire M, Wu H, Lall U. National trends in drinking water quality violations. *Proc Natl Acad Sci U S A.* 2018;115:2078–83. <https://doi.org/10.1073/pnas.1719805115>
11. Woodruff JD, Irish JL, Camargo SJ. Coastal flooding by tropical cyclones and sea-level rise. *Nature.* 2013;504:44–52. <https://doi.org/10.1038/nature12855>
12. Collier SA, Deng L, Adam EA, Benedict KM, Beshearse EM, Blackstock AJ, et al. Estimate of burden and direct healthcare cost of infectious waterborne disease in the United States. *Emerg Infect Dis.* 2021;27:140–9. <https://doi.org/10.3201/eid2701.190676>
13. Cunha BA, Burillo A, Bouza E. Legionnaires' disease. *Lancet.* 2016;387:376–85. [https://doi.org/10.1016/S0140-6736\(15\)60078-2](https://doi.org/10.1016/S0140-6736(15)60078-2)
14. Fletcher SM, Stark D, Harkness J, Ellis J. Enteric protozoa in the developed world: a public health perspective. *Clin Microbiol Rev.* 2012;25:420–49. <https://doi.org/10.1128/CMR.05038-11>
15. Jagai JS, DeFlorio-Barker S, Lin CJ, Hilborn ED, Wade TJ. Sanitary sewer overflows and emergency room visits for gastrointestinal illness: analysis of Massachusetts data, 2006–2007. *Environ Health Perspect.* 2017;125:117007. <https://doi.org/10.1289/EHP2048>
16. Sauer EP, Vandewalle JL, Bootsma MJ, McLellan SL. Detection of the human specific *Bacteroides* genetic marker provides evidence of widespread sewage contamination of stormwater in the urban environment. *Water Res.* 2011;45:4081–91. <https://doi.org/10.1016/j.watres.2011.04.049>
17. Wade TJ, Sandhu SK, Levy D, Lee S, LeChevallier MW, Katz L, et al. Did a severe flood in the Midwest cause an increase in the incidence of gastrointestinal symptoms? *Am J Epidemiol.* 2004;159:398–405. <https://doi.org/10.1093/aje/kwh050>
18. Amaral-Zettler LA, Rocca JD, Lamontagne MG, Dennett MR, Gast RJ. Changes in microbial community structure in the wake of Hurricanes Katrina and Rita. *Environ Sci Technol.* 2008;42:9072–8. <https://doi.org/10.1021/es801904z>
19. Cho S, Hiott LM, Barrett JB, McMillan EA, House SL, Humayoun SB, et al. Prevalence and characterization of *Escherichia coli* isolated from the Upper Oconee Watershed in Northeast Georgia. *PLoS One.* 2018;13:e0197005. <https://doi.org/10.1371/journal.pone.0197005>
20. Beaudeau P, Schwartz J, Levin R. Drinking water quality and hospital admissions of elderly people for gastrointestinal illness in Eastern Massachusetts, 1998–2008. *Water Res.* 2014;52:188–98. <https://doi.org/10.1016/j.watres.2014.01.005>
21. Den Boer JW, Coutinho RA, Yzerman EP, van der Sande MA. Use of surface water in drinking water production associated with municipal Legionnaires' disease incidence. *J Epidemiol Community Health.* 2008;62:e1. <https://doi.org/10.1136/jech.2007.061598>
22. Holvoet K, Sampers I, Seynaeve M, Uyttendaele M. Relationships among hygiene indicators and enteric pathogens in irrigation water, soil and lettuce and the impact of climatic conditions on contamination in the lettuce primary production. *Int J Food Microbiol.* 2014;171:21–31. <https://doi.org/10.1016/j.ijfoodmicro.2013.11.009>
23. Wade TJ, Lin CJ, Jagai JS, Hilborn ED. Flooding and emergency room visits for gastrointestinal illness in Massachusetts: a case-crossover study. *PLoS One.* 2014;9:e110474. <https://doi.org/10.1371/journal.pone.0110474>
24. Rangel JM, Sparling PH, Crowe C, Griffin PM, Swerdlow DL. Epidemiology of *Escherichia coli* O157:H7 outbreaks, United States, 1982–2002. *Emerg Infect Dis.* 2005;11:603–9. <https://doi.org/10.3201/eid1104.040739>
25. Hrudey SE, Payment P, Huck PM, Gillham RW, Hrudey EJ. A fatal waterborne disease epidemic in Walkerton, Ontario: comparison with other waterborne outbreaks in the developed world. *Water Sci Technol.* 2003;47:7–14. <https://doi.org/10.2166/wst.2003.0146>
26. Bloom MS, Palumbo J, Saiyed N, Lauper U, Lin S. Food and waterborne disease in the greater New York City area following Hurricane Sandy in 2012. *Disaster Med Public Health Prep.* 2016;10:503–11. <https://doi.org/10.1017/dmp.2016.85>
27. Lefebvre M, Razakandrainibe R, Villena I, Favennec L, Costa D. *Cryptosporidium*-biofilm interactions: a review. *Appl Environ Microbiol.* 2021;87:e02483-20. <https://doi.org/10.1128/AEM.02483-20>
28. Berendt RF. Survival of *Legionella pneumophila* in aerosols: effect of relative humidity. *J Infect Dis.* 1980;141:689. <https://doi.org/10.1093/infdis/141.5.689>
29. Karanis P, Kourenti C, Smith H. Waterborne transmission of protozoan parasites: a worldwide review of outbreaks and lessons learnt. *J Water Health.* 2007;5:1–38. <https://doi.org/10.2166/wh.2006.002>
30. Kitajima M, Haramoto E, Iker BC, Gerba CP. Occurrence of *Cryptosporidium*, *Giardia*, and *Cyclospora* in influent and effluent water at wastewater treatment plants in Arizona. *Sci Total Environ.* 2014;484:129–36. <https://doi.org/10.1016/j.scitotenv.2014.03.036>
31. Breiman RF, Butler JC. Legionnaires' disease: clinical, epidemiological, and public health perspectives. *Semin Respir Infect.* 1998;13:84–9.
32. Adam RD. Biology of *Giardia lamblia*. *Clin Microbiol Rev.* 2001;14:447–75. <https://doi.org/10.1128/CMR.14.3.447-475.2001>
33. Lake IR, Bentham G, Kovats RS, Nichols GL. Effects of weather and river flow on cryptosporidiosis. *J Water Health.* 2005;3:469–74. <https://doi.org/10.2166/wh.2005.048>
34. Reynolds KA, Mena KD, Gerba CP. Risk of waterborne illness via drinking water in the United States. *Rev Environ Contam Toxicol.* 2008;192:117–58.
35. Sidhu JP, Hodggers L, Ahmed W, Chong MN, Toze S. Prevalence of human pathogens and indicators in stormwater runoff in Brisbane, Australia. *Water Res.* 2012;46:6652–60. <https://doi.org/10.1016/j.watres.2012.03.012>
36. Collinet-Adler S, Ward HD. Cryptosporidiosis: environmental, therapeutic, and preventive challenges. *Eur J Clin Microbiol Infect Dis.* 2010;29:927–35. <https://doi.org/10.1007/s10096-010-0960-9>
37. Anderson GB, Ferreri J, Al-Hamdan M, Crosson W, Schumacher A, Guikema S, et al. Assessing United States county-level exposure for research on tropical cyclones and human health. *Environ Health Perspect.* 2020;128:107009. <https://doi.org/10.1289/EHP6976>
38. Kruk MC, Gibney EJ, Levinson DH, Squires M. A climatology of inland winds from tropical cyclones for the Eastern United States. *J Appl Meteorol Climatol.* 2010;49:1538–47. <https://doi.org/10.1175/2010JAMC2389.1>

39. Radcliff TA, Chu K, Der-Martirosian C, Dobalian A. A model for measuring ambulatory access to care recovery after disasters. *J Am Board Fam Med*. 2018;31:252-9. <https://doi.org/10.3122/jabfm.2018.02.170219>
40. Noe RS, Schnall AH, Wolkin AF, Podgornik MN, Wood AD, Spears J, et al. Disaster-related injuries and illnesses treated by American Red Cross disaster health services during Hurricanes Gustav and Ike. *South Med J*. 2013;106:102-8. <https://doi.org/10.1097/SMJ.0b013e31827c9e1f>
41. Armstrong BG, Gasparrini A, Tobias A. Conditional Poisson models: a flexible alternative to conditional logistic case cross-over analysis. *BMC Med Res Methodol*. 2014;14:122. <https://doi.org/10.1186/1471-2288-14-122>
42. Acheson DWK. Food and waterborne illnesses. In: Schaechter M, ed. *Encyclopedia of microbiology*, 3rd edition. New York: Academic Press; 2009. p. 365-81.
43. Ulrich N, Rosenberger A, Brislaw C, Wright J, Kessler C, Toole D, et al. Restructuring of the aquatic bacterial community by hydric dynamics associated with Superstorm Sandy. *Appl Environ Microbiol*. 2016;82:3525-36. <https://doi.org/10.1128/AEM.00520-16>
44. Brigmon RL, Turick CE, Knox AS, Burckhalter CE. The impact of storms on *Legionella pneumophila* in cooling tower water, implications for human health. *Front Microbiol*. 2020;11:543589. <https://doi.org/10.3389/fmicb.2020.543589>
45. Falkinham JO III, Hilborn ED, Arduino MJ, Pruden A, Edwards MA. Epidemiology and ecology of opportunistic premise plumbing pathogens: *Legionella pneumophila*, *Mycobacterium avium*, and *Pseudomonas aeruginosa*. *Environ Health Perspect*. 2015;123:749-58. <https://doi.org/10.1289/ehp.1408692>
46. Winfield MD, Groisman EA. Role of nonhost environments in the lifestyles of *Salmonella* and *Escherichia coli*. *Appl Environ Microbiol*. 2003;69:3687-94. <https://doi.org/10.1128/AEM.69.7.3687-3694.2003>
47. Wilkerson W, Archer WR. *Epidemiology in Texas 1998 annual report*. Austin: Texas Department of Health; 1999.
48. Saulnier DD, Brolin Ribacke K, von Schreeb J. No calm after the storm: a systematic review of human health following flood and storm disasters. *Prehosp Disaster Med*. 2017;32:568-79. <https://doi.org/10.1017/S1049023X17006574>
49. Lane K, Charles-Guzman K, Wheeler K, Abid Z, Graber N, Matte T. Health effects of coastal storms and flooding in urban areas: a review and vulnerability assessment. *J Environ Public Health*. 2013;2013:913064. <https://doi.org/10.1155/2013/913064>
50. Carroll RJ, Ruppert D, Stefanski LA, Crainiceanu CM. *Measurement error in nonlinear models: a modern perspective*, second edition. New York: Chapman and Hall/CRC; 2006.

Address for correspondence: Victoria D. Lynch, Mailman School of Public Health, 722 W 168th St, Fl 11, New York, NY 10032, USA; email: vdl2103@cumc.columbia.edu

## etymologia revisited

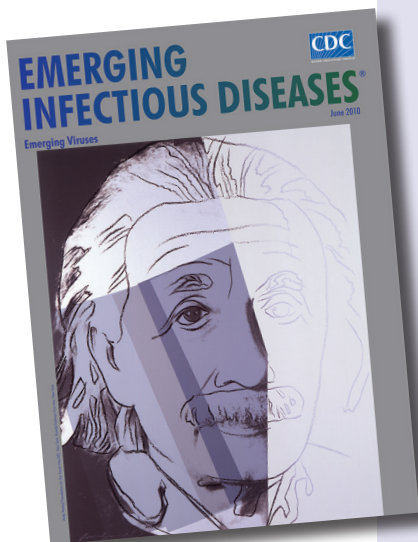
### Lassa Virus

[lah sə] virus

This virus was named after the town of Lassa at the southern end of Lake Chad in northeastern Nigeria, where the first known patient, a nurse in a mission hospital, had lived and worked when she contracted this infection in 1969. The virus was discovered as part of a plan to identify unknown viruses from Africa by collecting serum specimens from patients with fevers of unknown origin. Lassa virus, transmitted by field rats, is endemic in West Africa, where it causes up to 300,000 infections and 5,000 deaths each year.

#### References:

1. Frame JD, Baldwin JM Jr, Gocke DJ, Troup JM. Lassa fever, a new virus disease of man from West Africa. I. Clinical description and pathological findings. *Am J Trop Med Hyg*. 1970;19:670-6
2. Mahy BW. *The dictionary of virology*, 4th ed. Burlington (MA): Elsevier; 2009.



Originally published  
in June 2010

[https://wwwnc.cdc.gov/eid/article/16/6/et-1606\\_article](https://wwwnc.cdc.gov/eid/article/16/6/et-1606_article)



*EID cannot ensure accessibility for supplementary materials supplied by authors. Readers who have difficulty accessing supplementary content should contact the authors for assistance.*

# Waterborne Infectious Diseases Associated with Exposure to Tropical Cyclonic Storms, United States, 1996–2018

## Appendix

### Selection of Waterborne Infections and Case Definitions

#### Case Data and Definitions

The 6 infections in the analysis – Legionnaires’ disease, cryptosporidiosis, giardiasis, *Escherichia coli*, salmonellosis, and shigellosis – were selected because they are the only waterborne diseases included in National Notifiable Diseases Surveillance System (NNDSS; <https://www.cdc.gov/nndss>). The other 11 waterborne illnesses common in the United States, as determined by Centers for Disease Control and Prevention (CDC), are not included in NNDSS. Hospitals, healthcare providers, or laboratories report confirmed cases to public health departments, which notify CDC and send deidentified data to NNDSS (Appendix Table 1).

### Supplementary Methods

#### Data Sources

The storm and case data were the same as described in the main text. Drinking water data were extracted from the Safe Drinking Water Information System (SDWIS; <https://www.epa.gov/ground-water-and-drinking-water/safe-drinking-water-information-system-sdwis-federal-reporting>), which reports the drinking water source (groundwater or surface water) and population served for each community water system (CWS) in the United States. The primary drinking water source for the county was determined by aggregating the CWSs within the county and calculating the proportion of the population served by groundwater and surface water; counties where  $\geq 50\%$  of the population was served by groundwater sources were

categorized as groundwater counties and  $\geq 50\%$  served by surface water as surface water counties. Rurality categories were extracted from the US Department of Agriculture (USDA) Rural-Urban Continuum Codes (<https://www.ers.usda.gov/data-products/rural-urban-continuum-codes.aspx>), which categorizes metro areas by their population size and nonmetro areas by degree of urbanization and proximity to metro areas. Each county in the study area was classified as urban if it was in a metro category and rural if in a nonmetro category.

### Storm Exposure Definition and Statistical Approach

The process for defining state-level exposure was the same as in the main analysis except the counties were stratified by drinking water source and rural or urban location. The population thresholds were any (i.e.,  $>0$ ), 5%, 25%, 50%, and 75% exposed, but only applied to counties that met the drinking water or location criteria. For example, a state was considered exposed to a storm if 25% of the population who lives in rural counties was exposed. We used the conditional quasi-Poisson statistical framework outlined in the main text and Model section (Appendix).

### Description of Conditional Quasi-Poisson Model

In the conditional quasi-Poisson framework, the effect of storm exposure is first determined within matched strata created by matching on state and week. For week  $i$  and state  $s$ , the within-strata model is:

$$\log(E[Y_{is}]) = \alpha_0 + \alpha_{is} + \sum_{l=0}^4 \beta_l \text{storm}_{lis} + ns(\text{year}_s) + \log(\text{population}_{is})$$

where  $\alpha_{is}$  is the stratum-specific intercept,  $\beta_l$  the lag-specific coefficient (log rate ratio) for storm exposure,  $\text{storm}_{lis}$  the binary storm exposure variable,  $ns(\text{year}_s)$  the spline term for year with two degrees of freedom, and  $\text{population}_{is}$  is the population for each state and year. Instead of estimating model parameters, this approach conditions them out by conditioning on the sum of cases for each week  $i$  in a multinomial model ( $I$ ), such that:

$$(Y_{is} | \sum_s Y_{is}) \sim \text{Multinomial}(\pi_s)$$

where:

$$\pi_s = \frac{e^{\beta^T x_s}}{\sum_{j \in I} e^{\beta^T x_j}}$$

The  $\beta^T x_s$  and  $\beta^T x_j$  terms describe row vectors of coefficients,  $\beta$ , and variables,  $x$ , from the quasi-Poisson model where  $j$  is the subset of  $s$  that includes the observations for each week  $i$ .

$$\pi_s = \frac{e^{\alpha_0 + \alpha_i + \sum_{l=0}^4 \beta_l \text{storm}_{lis} + ns(\text{year}_s) + \log(\text{population}_{is})}}{\sum_{j \in i} e^{\alpha_0 + \alpha_{ij} + \sum_{l=0}^4 \beta_l \text{storm}_{lij} + ns(\text{year}_j) + \log(\text{population}_{ij})}}$$

## Supplementary Results

The effect of storm exposure on cases when exposure was restricted to groundwater counties or rural was essentially the same as the main analysis (Appendix Tables 4, 5). When storm exposure was defined by  $\geq 75$  mm rainfall, cryptosporidiosis cases increased during the storm week at low population thresholds but had no significant effect in lagged weeks. Legionnaires' disease cases increased with lagged weeks and higher population exposure thresholds, and the effects were similar to those in the main analysis. At the 50% and 75% population exposure thresholds, the increase in *E. coli* cases 2–3 weeks post storm was more pronounced in groundwater-reliant and rural areas. When exposure was restricted to surface water or rural counties, few states were considered exposed and the effect of storms on most cases was insignificant.

## Reference

1. Armstrong BG, Gasparini A, Tobias A. Conditional Poisson models: a flexible alternative to conditional logistic case cross-over analysis. *BMC Med Res Methodol.* 2014;14:122. [PubMed](https://doi.org/10.1186/1471-2288-14-122) <https://doi.org/10.1186/1471-2288-14-122>



**Appendix Table 1.** Surveillance case definitions used to study waterborne infectious diseases associated with exposure to tropical cyclonic storms, United States, 1996–2018\*

Disease	Confirmed case definition	Laboratory criteria for diagnosis
Cryptosporidiosis	A case that meets the clinical description and at least one of the criteria for laboratory-confirmation. When available, species designation and molecular characterization should be reported.	Laboratory-confirmed cryptosporidiosis shall be defined as the detection of a member of the genus <i>Cryptosporidium</i> by one of the following methods: <ul style="list-style-type: none"> <li>• Organisms in stool, intestinal fluid, or tissue samples, or biopsy specimens</li> <li>• Antigens in stool or intestinal fluid</li> <li>• Nucleic acid by PCR in stool, intestinal fluid, or tissue samples or biopsy specimens</li> </ul>
Legionnaires' disease	A clinically compatible case that meets at least one of the confirmatory laboratory criteria.	<ul style="list-style-type: none"> <li>• By culture: isolation of any <i>Legionella</i> organism from respiratory secretions, lung tissue, pleural fluid, or other normally sterile fluid</li> <li>• By detection of <i>Legionella pneumophila</i> serogroup 1 antigen in urine using validate reagents</li> <li>• By seroconversion: 4-fold or greater rise in specific serum antibody titer to <i>Legionella pneumophila</i> serogroup 1 using validated reagents</li> </ul>
<i>Escherichia coli</i> infection	A case that meets the laboratory criteria for diagnosis. When available, O and H antigen serotype characterization should be reported.	Isolation of Shiga toxin–producing <i>Escherichia coli</i> from a clinical specimen. <i>Escherichia coli</i> O157:H7 isolates may be assumed to be Shiga toxin–producing. For all other <i>E. coli</i> isolates, Shiga toxin production or the presence of Shiga toxin genes must be determined to be considered STEC.
Salmonellosis	A case that meets the laboratory criteria for diagnosis. When available, O and H antigen serotype characterization should be reported.	Isolation of <i>Salmonella</i> from a clinical specimen.
Giardiasis	A case that meets the clinical description and the criteria for laboratory confirmation. When available, molecular characterization (e.g., assemblage designation) should be reported.	Laboratory-confirmed giardiasis shall be defined as the detection of <i>Giardia</i> organisms, antigen, or DNA in stool, intestinal fluid, tissue samples, biopsy specimens, or other biologic sample.
Shigellosis	A case that meets the laboratory criteria for diagnosis. When available, O and H antigen serotype characterization should be reported.	Isolation of <i>Shigella</i> from a clinical specimen.

\*Definitions used by Centers for Disease Control and Prevention for National Disease Surveillance System (<https://www.cdc.gov/ndss>). STEC, Shiga toxin–producing *Escherichia coli*.

**Appendix Table 2.** Total number of storm weeks by population- and exposure-threshold across all states in a study waterborne infectious diseases associated with exposure to tropical cyclonic storms, United States, 1996–2018\*

Storm exposure variable	% Population exposed				
	Any	5	25	50	75
Total rainfall, mm					
50	4,453	3,734	2,502	1,751	1,100
75	3,199	2,487	1,481	902	476
100	2,210	1,580	865	547	213
Sustained winds†					
Gale-force winds	1,437	1,070	586	284	163
Hurricane-force winds	215	110	6	0	0
Distance from storm track, km					
500	9,108	8,461	7,167	6,107	5,123
250	5,219	4,584	3,400	2,577	1,737
150	3,758	3,151	2,105	1,304	769

\*Analysis includes 20,442 weeks, given 27 weeks in the storm season, 30 states and Washington, DC in the affected region, and 23 years of data; West Virginia did not report to the National Notifiable Diseases Surveillance System (NNDSS; <https://www.cdc.gov/nndss>) in 1996 or 1997.

†National Oceanic and Atmospheric Administration (<https://www.noaa.gov>) designates tropical storms as those with gale-force winds, defined as  $\geq 34$  knots to  $< 64$  knots and hurricane-force winds as  $\geq 64$  knots.

**Appendix Table 3.** Percent change in weekly case rates during weeks with cyclonic storms compared with weeks without storms, United States, 1996–2018\*

Disease	% Population exposed	% Change per week post storm (95% CI)			
		Week 0	Week 1	Week 2	Week 3
Cryptosporidiosis	>0	0.4 (0.31–0.5)	0.08 (–0.02 to 0.19)	0.12 (0.02–0.23)	0.13 (0.02–0.24)
	5	0.52 (0.42–0.62)	0.16 (0.04–0.27)	0.19 (0.08–0.31)	0.15 (0.02–0.27)
	25	0.03 (–0.14 to 0.2)	0.09 (–0.08 to 0.25)	0.19 (0.02–0.35)	0.16 (–0.01 to 0.33)
	50	0.01 (–0.22 to 0.23)	0.11 (–0.1 to 0.33)	0.18 (–0.03 to 0.39)	0.18 (–0.04 to 0.4)
	75	–0.11 (–0.43 to 0.21)	0.05 (–0.24 to 0.34)	–0.06 (–0.37 to 0.25)	0.05 (–0.27 to 0.37)
Legionnaires' disease	>0	0.1 (0.01–0.19)	0.13 (0.04–0.22)	0.18 (0.09–0.27)	0.19 (0.1, 0.28)
	5	0.15 (0.05–0.25)	0.17 (0.07–0.27)	0.19 (0.09–0.29)	0.22 (0.12–0.32)
	25	0.11 (–0.02 to 0.24)	0.28 (0.15–0.4)	0.34 (0.22–0.46)	0.33 (0.2–0.45)
	50	0.19 (0.03–0.34)	0.27 (0.12–0.42)	0.42 (0.28–0.56)	0.4 (0.26–0.54)
<i>Escherichia coli</i> infection	>0	–0.15 (–0.25 to –0.04)	–0.05 (–0.15 to 0.05)	–0.03 (–0.13 to 0.07)	0 (–0.1 to 0.1)
	5	–0.09 (–0.21 to 0.02)	0.02 (–0.1 to 0.13)	0.07 (–0.04 to 0.18)	0.04 (–0.07 to 0.16)
	25	–0.08 (–0.23 to 0.07)	0.1 (–0.04 to 0.25)	0.05 (–0.1 to 0.19)	0.07 (–0.08 to 0.22)
	50	–0.1 (–0.3 to 0.1)	0.29 (0.12–0.46)	0.16 (–0.02 to 0.33)	0.16 (–0.03 to 0.34)
	75	–0.01 (–0.26, 0.24)	0.48 (0.27–0.69)	0.33 (0.11–0.56)	0.15 (–0.1 to 0.4)
Salmonellosis	>0	–0.02 (–0.05 to 0.02)	–0.02 (–0.05 to 0.02)	–0.03 (–0.07 to 0)	–0.02 (–0.06 to 0.02)
	5	–0.03 (–0.07 to 0.01)	–0.03 (–0.07 to 0.02)	–0.04 (–0.08 to 0)	–0.02 (–0.06 to 0.03)
	25	0.02 (–0.03 to 0.08)	0.01 (–0.04 to 0.06)	–0.04 (–0.09 to 0.02)	–0.02 (–0.07 to 0.04)
	50	0.04 (–0.03 to 0.11)	0.01 (–0.06 to 0.08)	–0.08 (–0.15 to –0.01)	–0.03 (–0.1 to 0.05)
	75	0.02 (–0.07 to 0.12)	0.03 (–0.06 to 0.13)	–0.06 (–0.16 to 0.05)	–0.02 (–0.13 to 0.08)
Giardiasis	>0	–0.02 (–0.05 to 0.02)	–0.02 (–0.05 to 0.02)	–0.03 (–0.07 to 0)	–0.02 (–0.06 to 0.02)
	5	–0.03 (–0.07 to 0.01)	–0.03 (–0.07 to 0.02)	–0.04 (–0.08 to 0)	–0.02 (–0.06 to 0.03)
	25	0.02 (–0.03 to 0.08)	0.01 (–0.04 to 0.06)	–0.04 (–0.09 to 0.02)	–0.02 (–0.07 to 0.04)
	50	0.04 (–0.03 to 0.11)	0.01 (–0.06 to 0.08)	–0.08 (–0.15 to –0.01)	–0.03 (–0.1 to 0.05)
	75	0.02 (–0.07 to 0.12)	0.03 (–0.06 to 0.13)	–0.06 (–0.16 to 0.05)	–0.02 (–0.13 to 0.08)
Shigellosis	>0	–0.02 (–0.05 to 0.02)	–0.02 (–0.05 to 0.02)	–0.03 (–0.07 to 0)	–0.02 (–0.06 to 0.02)
	5	–0.03 (–0.07 to 0.01)	–0.03 (–0.07 to 0.02)	–0.04 (–0.08 to 0)	–0.02 (–0.06 to 0.03)
	25	0.02 (–0.03 to 0.08)	0.01 (–0.04, 0.06)	–0.04 (–0.09 to 0.02)	–0.02 (–0.07 to 0.04)
	50	0.04 (–0.03 to 0.11)	0.01 (–0.06 to 0.08)	–0.08 (–0.15 to –0.01)	–0.03 (–0.1 to 0.05)
	75	0.02 (–0.07 to 0.12)	0.03 (–0.06 to 0.13)	–0.06 (–0.16 to 0.05)	–0.02 (–0.13 to 0.08)

\*Tropical cyclonic exposure is defined by  $\geq 75$  mm cumulative rainfall attributed to the storm.

**Appendix Table 4.** Effect of exposure in counties with groundwater drinking water sources in a study waterborne infectious diseases associated with exposure to tropical cyclonic storms, United States, 1996–2018\*

Disease	% Population exposed	% Change per week post storm (95% CI)			
		Week 0	Week 1	Week 2	Week 3
Cryptosporidiosis	>0	0.42 (0.32–0.51)	0.08 (–0.02 to 0.19)	0.12 (0.02–0.23)	0.13 (0.02–0.24)
	5	0.52 (0.41–0.62)	0.13 (0.01–0.25)	0.2 (0.08–0.31)	0.15 (0.03–0.27)
	25	0.03 (–0.15 to 0.2)	0.08 (–0.09 to 0.25)	0.2 (0.03–0.37)	0.16 (–0.01 to 0.34)
	50	0.02 (–0.21 to 0.26)	0.08 (–0.14 to 0.31)	0.15 (–0.07 to 0.38)	0.2 (–0.03 to 0.43)
	75	–0.05 (–0.41 to 0.3)	0.07 (–0.26 to 0.39)	–0.01 (–0.34 to 0.33)	0.12 (–0.23 to 0.46)
Legionnaires' disease	>0	0.1 (0.01–0.19)	0.14 (0.05–0.23)	0.18 (0.09–0.27)	0.19 (0.1–0.28)
	5	0.13 (0.03–0.24)	0.17 (0.07–0.27)	0.18 (0.08–0.28)	0.22 (0.12–0.32)
	25	0.11 (–0.03 to 0.24)	0.27 (0.15–0.4)	0.35 (0.22–0.47)	0.35 (0.22–0.47)
	50	0.17 (0.01–0.33)	0.28 (0.12–0.44)	0.38 (0.23–0.54)	0.41 (0.26–0.56)
	75	0.23 (0–0.46)	0.33 (0.1–0.55)	0.38 (0.16–0.61)	0.34 (0.12–0.57)
<i>Escherichia coli</i> infections	>0	–0.15 (–0.25 to –0.04)	–0.05 (–0.15 to 0.05)	–0.02 (–0.12 to 0.08)	–0.01 (–0.11 to 0.1)
	5	–0.1 (–0.22 to 0.01)	0.02 (–0.1 to 0.13)	0.06 (–0.05 to 0.18)	0.05 (–0.07 to 0.16)

Disease	% Population exposed	% Change per week post storm (95% CI)			
		Week 0	Week 1	Week 2	Week 3
Salmonellosis	25	-0.08 (-0.23 to 0.08)	0.12 (-0.03 to 0.26)	0.04 (-0.11 to 0.2)	0.09 (-0.06 to 0.24)
	50	-0.1 (-0.31 to 0.1)	0.28 (0.1-0.45)	0.17 (-0.01 to 0.36)	0.2 (0.01-0.39)
	75	-0.03 (-0.3 to 0.24)	0.5 (0.28-0.72)	0.39 (0.15-0.63)	0.27 (0.01-0.53)
	>0	-0.02 (-0.06 to 0.02)	-0.02 (-0.06 to 0.02)	-0.04 (-0.07 to 0)	-0.02 (-0.06 to 0.01)
	5	-0.02 (-0.07 to 0.02)	-0.03 (-0.07 to 0.02)	-0.05 (-0.09 to 0)	-0.02 (-0.06 to 0.03)
Giardiasis	25	0.03 (-0.03 to 0.08)	0.02 (-0.03 to 0.07)	-0.03 (-0.09 to 0.02)	-0.01 (-0.06 to 0.05)
	50	0.04 (-0.03 to 0.12)	0.02 (-0.05 to 0.09)	-0.07 (-0.15 to 0)	-0.03 (-0.11 to 0.05)
	75	0.05 (-0.06 to 0.15)	0.06 (-0.04 to 0.17)	-0.04 (-0.16 to 0.07)	-0.02 (-0.13 to 0.1)
	>0	0 (-0.06 to 0.05)	-0.01 (-0.07 to 0.04)	0 (-0.05 to 0.06)	-0.03 (-0.09 to 0.03)
	5	-0.01 (-0.07 to 0.06)	-0.01 (-0.07 to 0.06)	0.02 (-0.05 to 0.08)	-0.03 (-0.09 to 0.04)
Shigellosis	25	-0.02 (-0.1 to 0.07)	-0.02 (-0.1 to 0.07)	0.04 (-0.05 to 0.12)	0.01 (-0.08 to 0.09)
	50	-0.05 (-0.16 to 0.06)	-0.04 (-0.15 to 0.06)	0.01 (-0.1 to 0.11)	0 (-0.1, 0.1)
	75	-0.02 (-0.17 to 0.14)	-0.06 (-0.21 to 0.1)	-0.03 (-0.19 to 0.12)	0 (-0.15 to 0.16)
	>0	-0.08 (-0.18 to 0.02)	-0.09 (-0.18 to 0.01)	0.01 (-0.09 to 0.1)	0.02 (-0.08 to 0.11)
	5	-0.11 (-0.22 to 0.01)	-0.08 (-0.2 to 0.03)	0.01 (-0.1 to 0.12)	0.01 (-0.1 to 0.12)
25	-0.19 (-0.35 to -0.03)	-0.11 (-0.26 to 0.05)	-0.01 (-0.16 to 0.14)	-0.03 (-0.19 to 0.12)	
50	-0.26 (-0.48 to -0.04)	-0.07 (-0.28 to 0.14)	0.02 (-0.18 to 0.23)	-0.01 (-0.21 to 0.19)	
75	-0.35 (-0.67 to -0.02)	-0.04 (-0.35 to 0.27)	0.11 (-0.18 to 0.41)	0.09 (-0.2 to 0.39)	

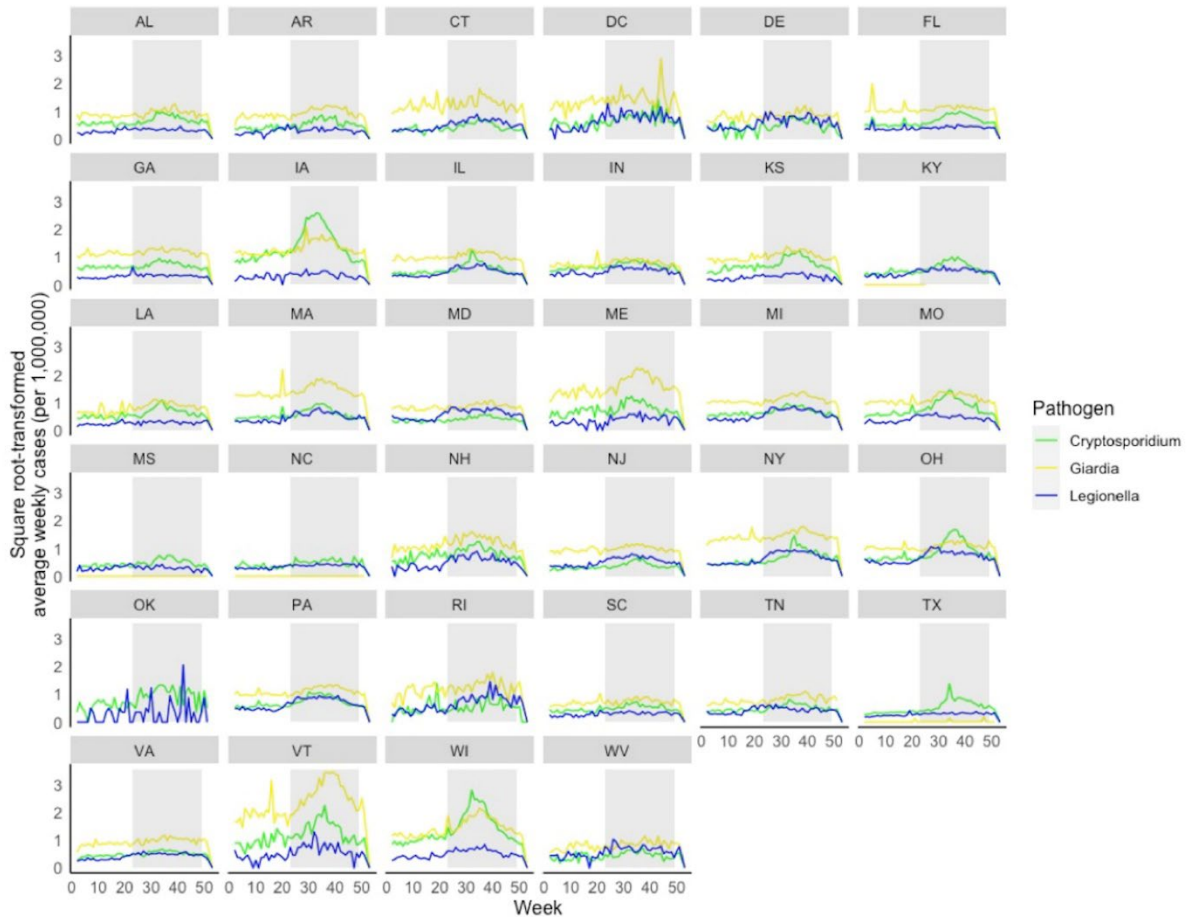
\*Effects were limited to populations exposed to tropical cyclonic storms in counties with groundwater drinking water sources. Tropical cyclonic exposure is defined by  $\geq 75$  mm cumulative rainfall attributed to the storm.

**Appendix Table 5.** Effect of exposure to rural counties in a study waterborne infectious diseases associated with exposure to tropical cyclonic storms, United States, 1996–2018\*

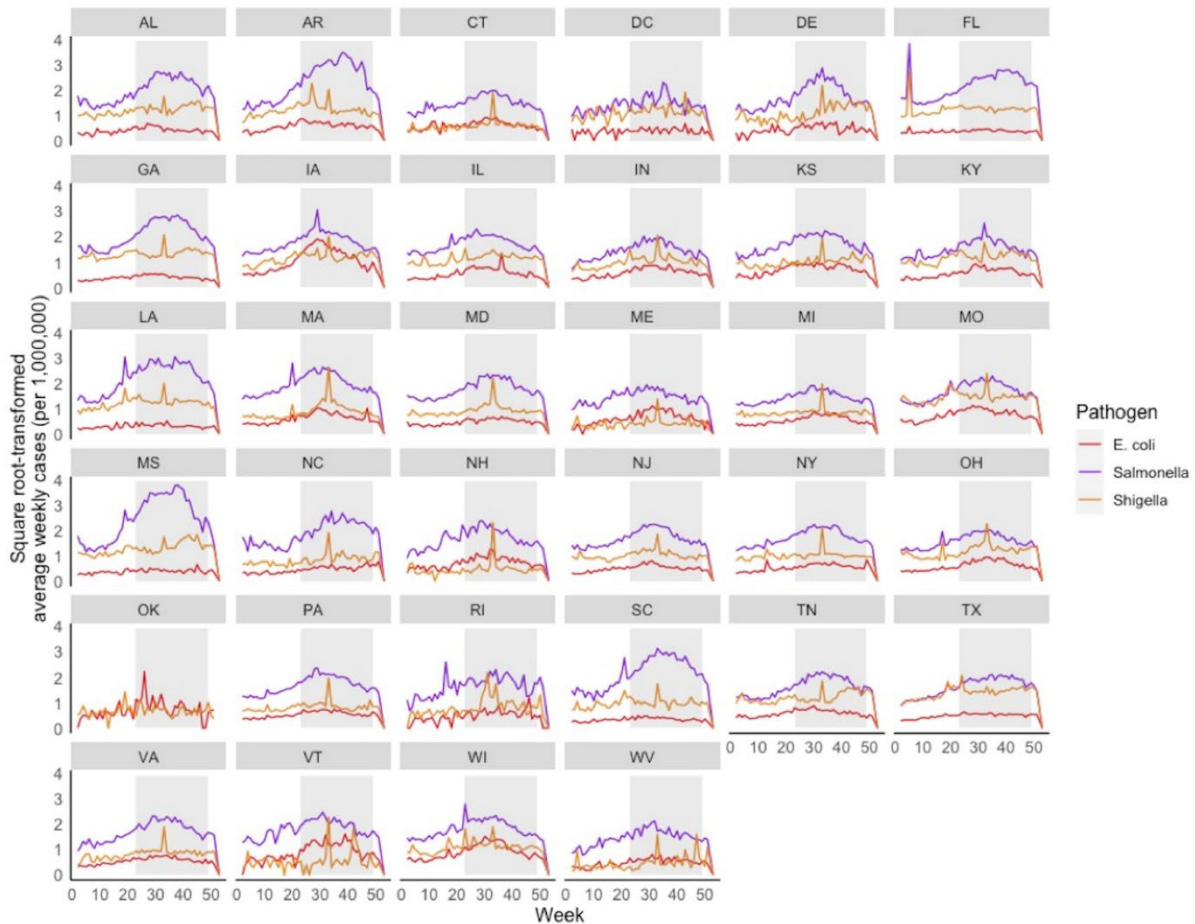
Disease	% Population exposed	% Change per week post storm (95% CI)			
		Week 0	Week 1	Week 2	Week 3
Cryptosporidiosis	>0	0.44 (0.34-0.54)	0.1 (-0.01 to 0.21)	0.16 (0.05-0.26)	0.16 (0.05-0.28)
	5	0.56 (0.46-0.66)	0.17 (0.05-0.29)	0.24 (0.12-0.35)	0.18 (0.05-0.3)
	25	0.03 (-0.15 to 0.21)	0.09 (-0.09 to 0.26)	0.22 (0.05-0.39)	0.17 (-0.01 to 0.35)
	50	0.06 (-0.18 to 0.29)	0.16 (-0.06 to 0.39)	0.24 (0.01-0.46)	0.23 (0-0.47)
	75	-0.42 (-0.89 to 0.05)	-0.31 (-0.73 to 0.11)	-0.41 (-0.88 to 0.05)	-0.22 (-0.67 to 0.24)
Legionnaires' disease	>0	0.1 (0.01-0.2)	0.14 (0.05-0.23)	0.17 (0.08-0.26)	0.2 (0.1-0.29)
	5	0.15 (0.04-0.25)	0.18 (0.07-0.28)	0.19 (0.09-0.29)	0.23 (0.13-0.34)
	25	0.13 (0-0.26)	0.3 (0.18-0.43)	0.37 (0.24-0.49)	0.34 (0.22-0.47)
	50	0.21 (0.05-0.37)	0.27 (0.11-0.44)	0.42 (0.27-0.57)	0.4 (0.25-0.56)
	75	0.28 (0.05-0.51)	0.3 (0.07-0.54)	0.41 (0.18-0.63)	0.45 (0.23-0.67)
<i>Escherichia coli</i> infection	>0	-0.13 (-0.24 to -0.03)	-0.03 (-0.14 to 0.07)	0.01 (-0.09 to 0.11)	0.02 (-0.09 to 0.12)
	5	-0.1 (-0.22 to 0.02)	0.02 (-0.1 to 0.14)	0.07 (-0.04 to 0.19)	0.07 (-0.05 to 0.19)
	25	-0.08 (-0.24 to 0.08)	0.13 (-0.02 to 0.28)	0.06 (-0.09 to 0.22)	0.11 (-0.05 to 0.26)
	50	-0.11 (-0.32 to 0.1)	0.33 (0.15, 0.51)	0.22 (0.03, 0.41)	0.11 (-0.1 to 0.31)
	75	0 (-0.3 to 0.3)	0.51 (0.26, 0.77)	0.49 (0.22, 0.75)	0.23 (-0.07 to 0.53)
Salmonellosis	>0	-0.02 (-0.05 to 0.02)	-0.02 (-0.05 to 0.02)	-0.03 (-0.07 to 0)	-0.02 (-0.06 to 0.01)
	5	-0.02 (-0.06 to 0.03)	-0.03 (-0.07, 0.01)	-0.06 (-0.11 to -0.02)	-0.02 (-0.06 to 0.03)
	25	0.03 (-0.02 to 0.09)	0.01 (-0.05 to 0.07)	-0.03 (-0.09 to 0.02)	0 (-0.06 to 0.06)
	50	0.03 (-0.05 to 0.1)	-0.02 (-0.1 to 0.06)	-0.09 (-0.17 to 0)	-0.02 (-0.1 to 0.06)
	75	0.05 (-0.08 to 0.17)	-0.02 (-0.15 to 0.1)	-0.1 (-0.24 to 0.03)	-0.01 (-0.14 to 0.12)

\*Effects were limited to populations in rural counties exposed to tropical cyclonic storms, defined by  $\geq 75$  mm cumulative rainfall attributed to the storm.

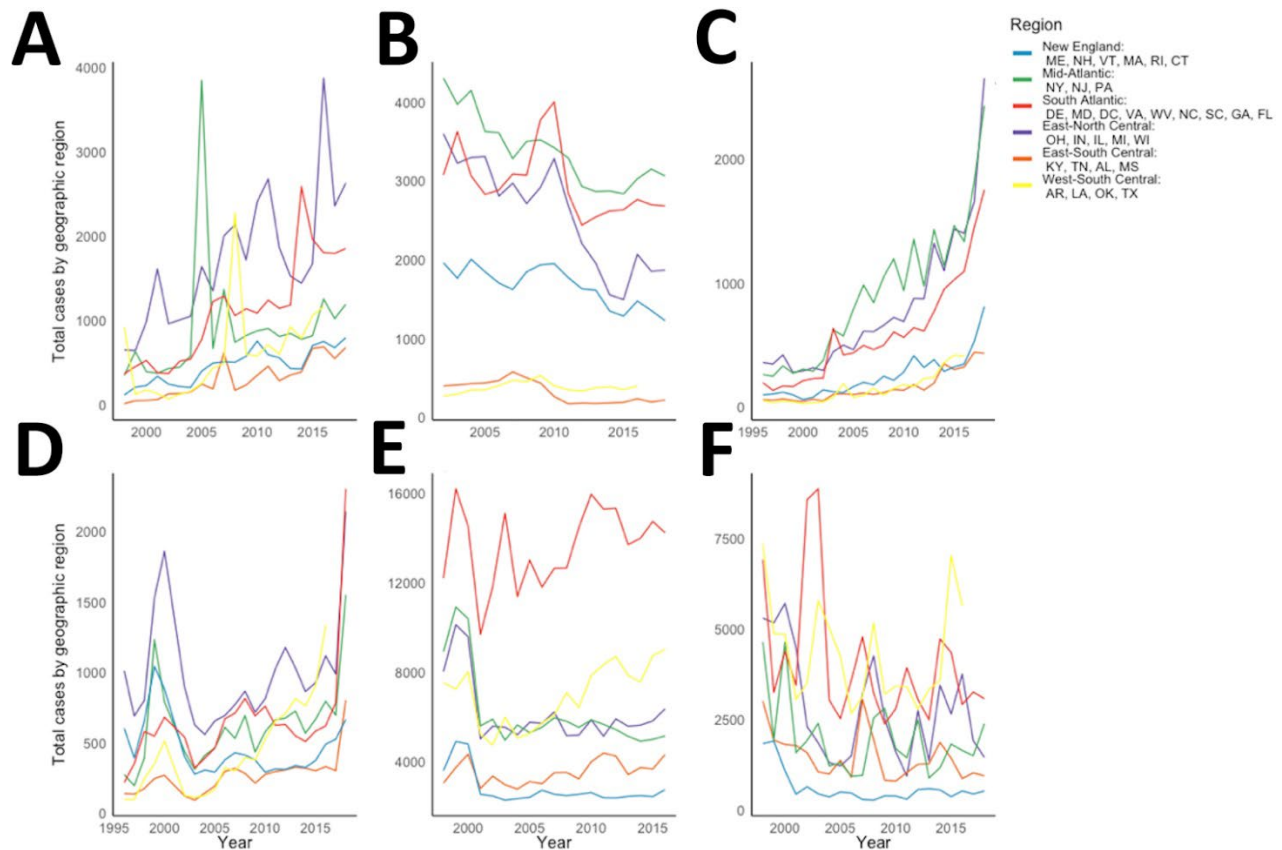




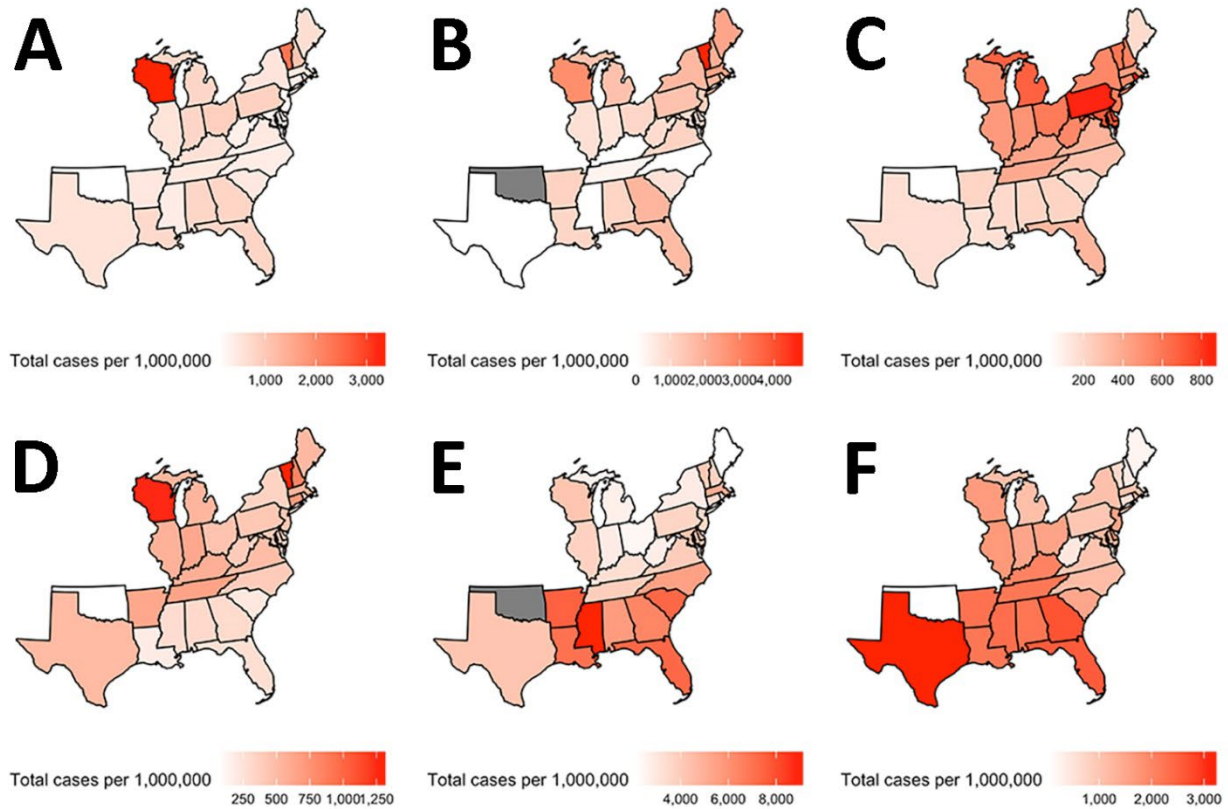
**Appendix Figure 1.** Average weekly cryptosporidiosis, giardiasis, and Legionnaires' disease cases per 1,000,000 population by state in a study of waterborne infectious diseases associated with exposure to tropical cyclonic storms, United States, 1996–2018. Average weekly cases were square-root transformed for infectious disease surveillance data in the National Notifiable Diseases Surveillance System (<https://www.cdc.gov/nndss>); not all infections were reported for the entire study period (Table 1). The shaded region in each graph represents the weeks encompassed in the annual Atlantic storm season, June 1–November 30. AL, Alabama; AR, Arkansas; CT, Connecticut; DC, Washington, DC; DE, Delaware; FL, Florida; GA, Georgia; IL, Illinois; IN, Indiana; KY, Kentucky; LA, Louisiana; MA, Massachusetts; MD, Maryland; ME, Maine; MI, Michigan; MS, Mississippi; NC, North Carolina; NH, New Hampshire; NJ, New Jersey; NY, New York; OH, Ohio; OK, Oklahoma; PA, Pennsylvania; RI, Rhode Island; SC, South Carolina; TN, Tennessee; TX, Texas; VA, Virginia; VT, Vermont; WI, Wisconsin; WV, West Virginia.



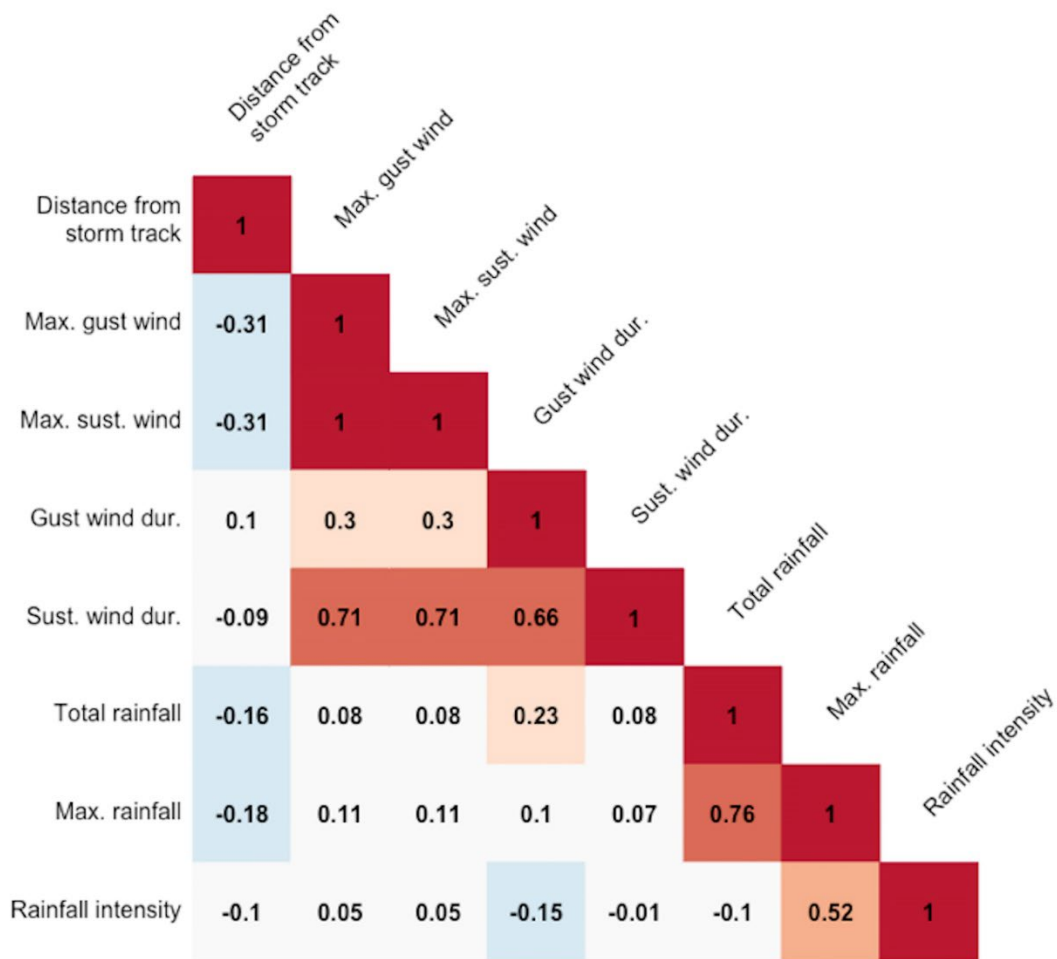
**Appendix Figure 2.** Average weekly cases of *Escherichia coli* infection, salmonellosis, and shigellosis per 1,000,000 population by state in a study of waterborne infectious diseases associated with exposure to tropical cyclonic storms, United States, 1996–2018. Average weekly cases were square-root transformed for infectious disease surveillance data in the National Notifiable Diseases Surveillance System (<https://www.cdc.gov/nndss>); not all infections were reported for the entire study period (Table 1). The shaded region represents the weeks encompassed in the annual Atlantic storm season, June 1–November 30. AL, Alabama; AR, Arkansas; CT, Connecticut; DC, Washington, DC; DE, Delaware; FL, Florida; GA, Georgia; IL, Illinois; IN, Indiana; KY, Kentucky; LA, Louisiana; MA, Massachusetts; MD, Maryland; ME, Maine; MI, Michigan; MS, Mississippi; NC, North Carolina; NH, New Hampshire; NJ, New Jersey; NY, New York; OH, Ohio; OK, Oklahoma; PA, Pennsylvania; RI, Rhode Island; SC, South Carolina; TN, Tennessee; TX, Texas; VA, Virginia; VT, Vermont; WI, Wisconsin; WV, West Virginia.



**Appendix Figure 3.** Total weekly cases by geographic region reported to the National Notifiable Diseases Surveillance System (<https://www.cdc.gov/nndss>), United States, 1996–2018. Data are included for the following waterborne diseases: A) cryptosporidiosis; B) giardiasis; C) Legionnaires' disease; D) Escherichia coli infection; E) salmonellosis; and F) shigellosis. Not all infections were reported for the entire study period (Table 1). AL, Alabama; AR, Arkansas; CT, Connecticut; DC, Washington, DC; DE, Delaware; FL, Florida; GA, Georgia; IL, Illinois; IN, Indiana; KY, Kentucky; LA, Louisiana; MA, Massachusetts; MD, Maryland; ME, Maine; MI, Michigan; MS, Mississippi; NC, North Carolina; NH, New Hampshire; NJ, New Jersey; NY, New York; OH, Ohio; OK, Oklahoma; PA, Pennsylvania; RI, Rhode Island; SC, South Carolina; TN, Tennessee; TX, Texas; VA, Virginia; VT, Vermont; WI, Wisconsin; WV, West Virginia.

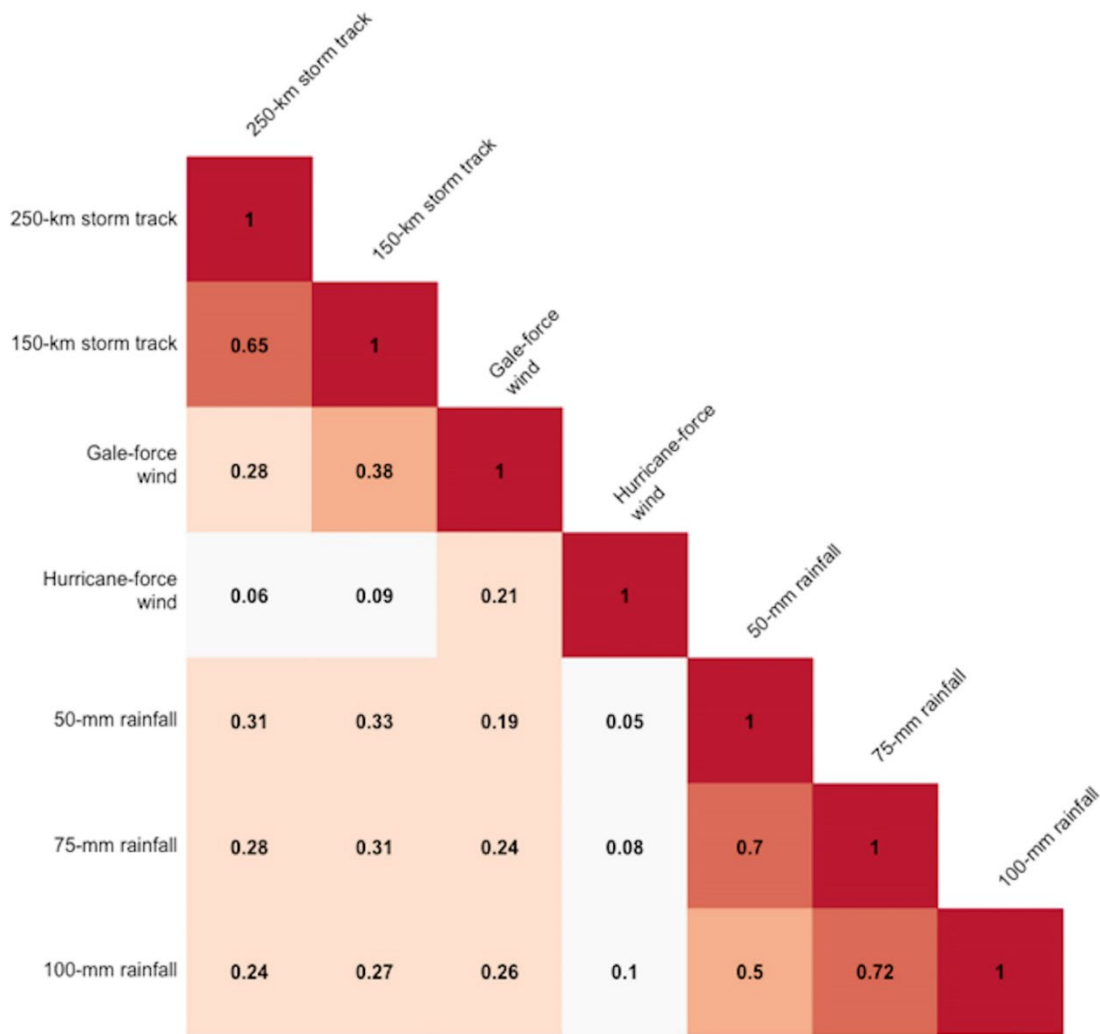


**Appendix Figure 4.** Cumulative cases per 1,000,000 population in each US state during 1996–2018 for each infectious disease in the National Notifiable Diseases Surveillance System (NNDSS; <https://www.cdc.gov/nndss>). Data are included for the following waterborne diseases: A) cryptosporidiosis; B) giardiasis; C) Legionnaires’ disease; D) Escherichia coli infection; E) salmonellosis; and F) shigellosis. Gray states represent those that did not contribute to NNDSS for a given infectious disease; not all infections were reported for the entire study or in each state (Table 1).

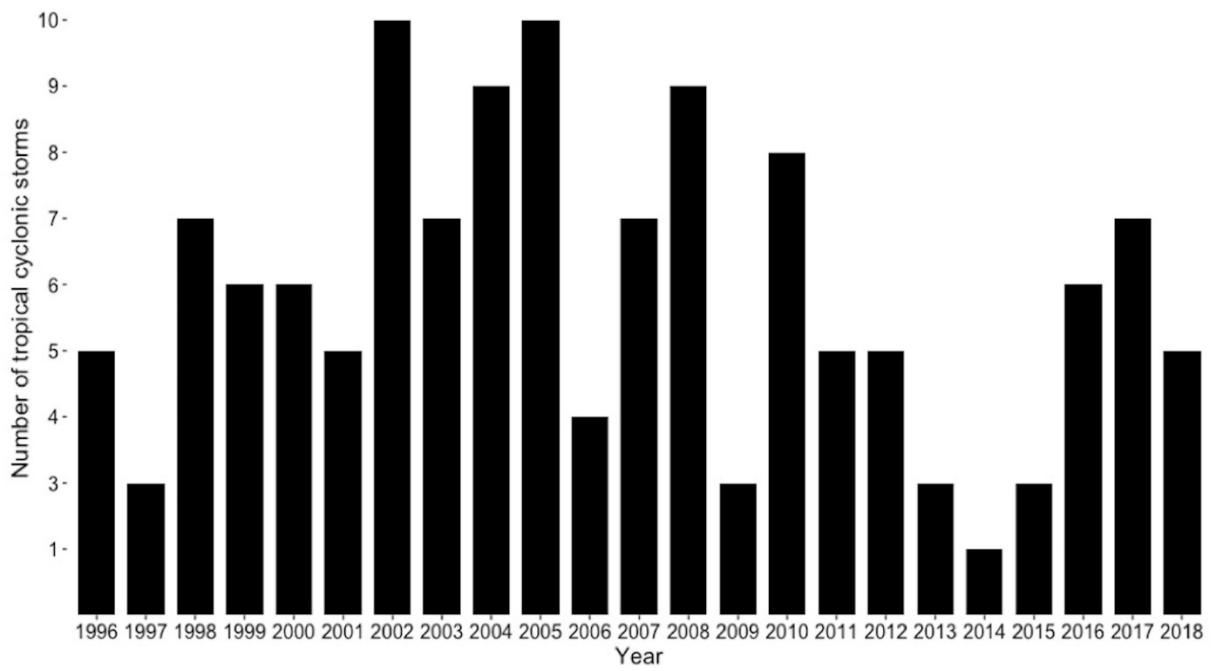


**Appendix Figure 5.** Correlation matrix for storm characteristics related to rainfall, windspeed, and distance from storm track in a study of waterborne infectious diseases associated with exposure to tropical cyclonic storms, United States, 1996–2018.

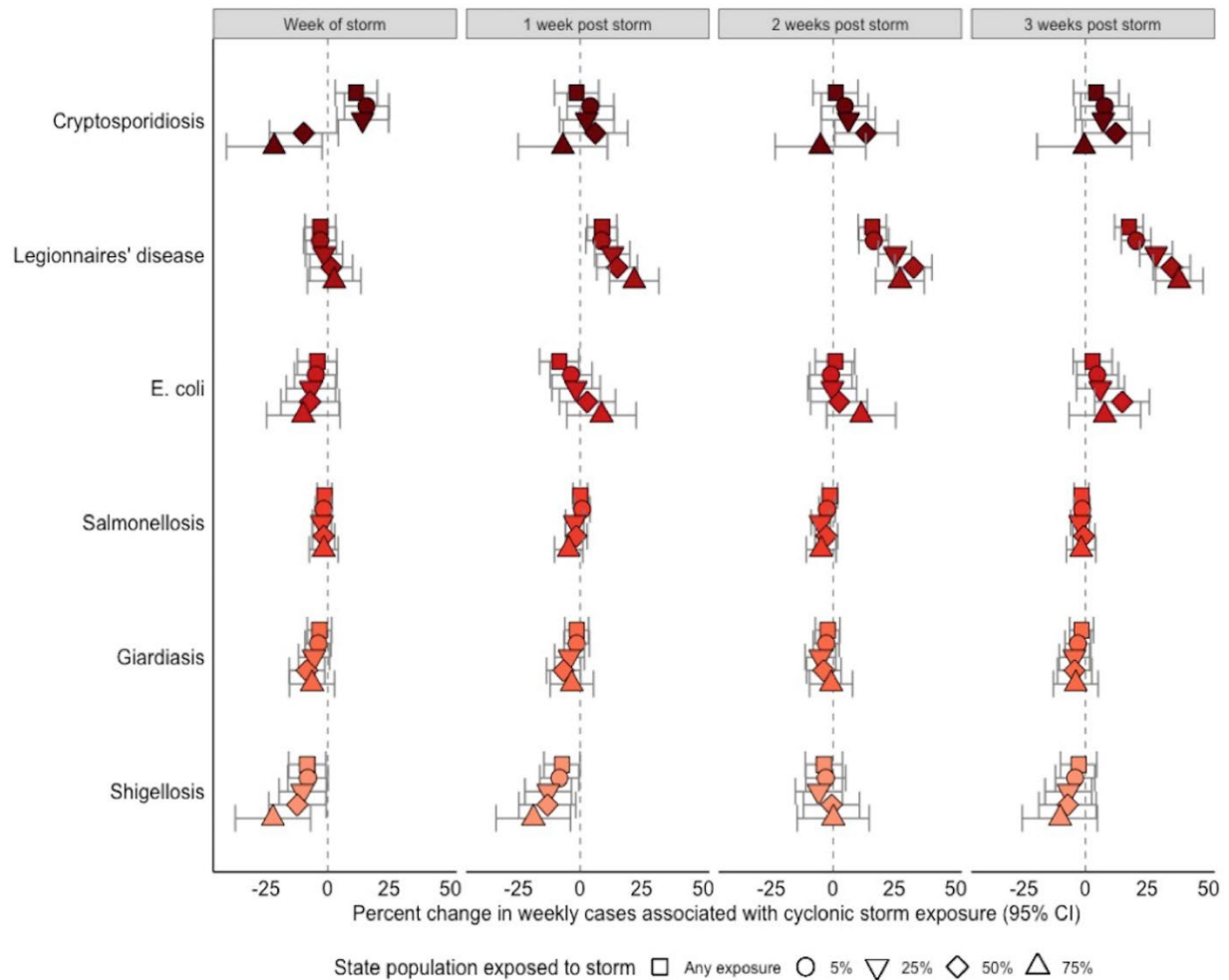




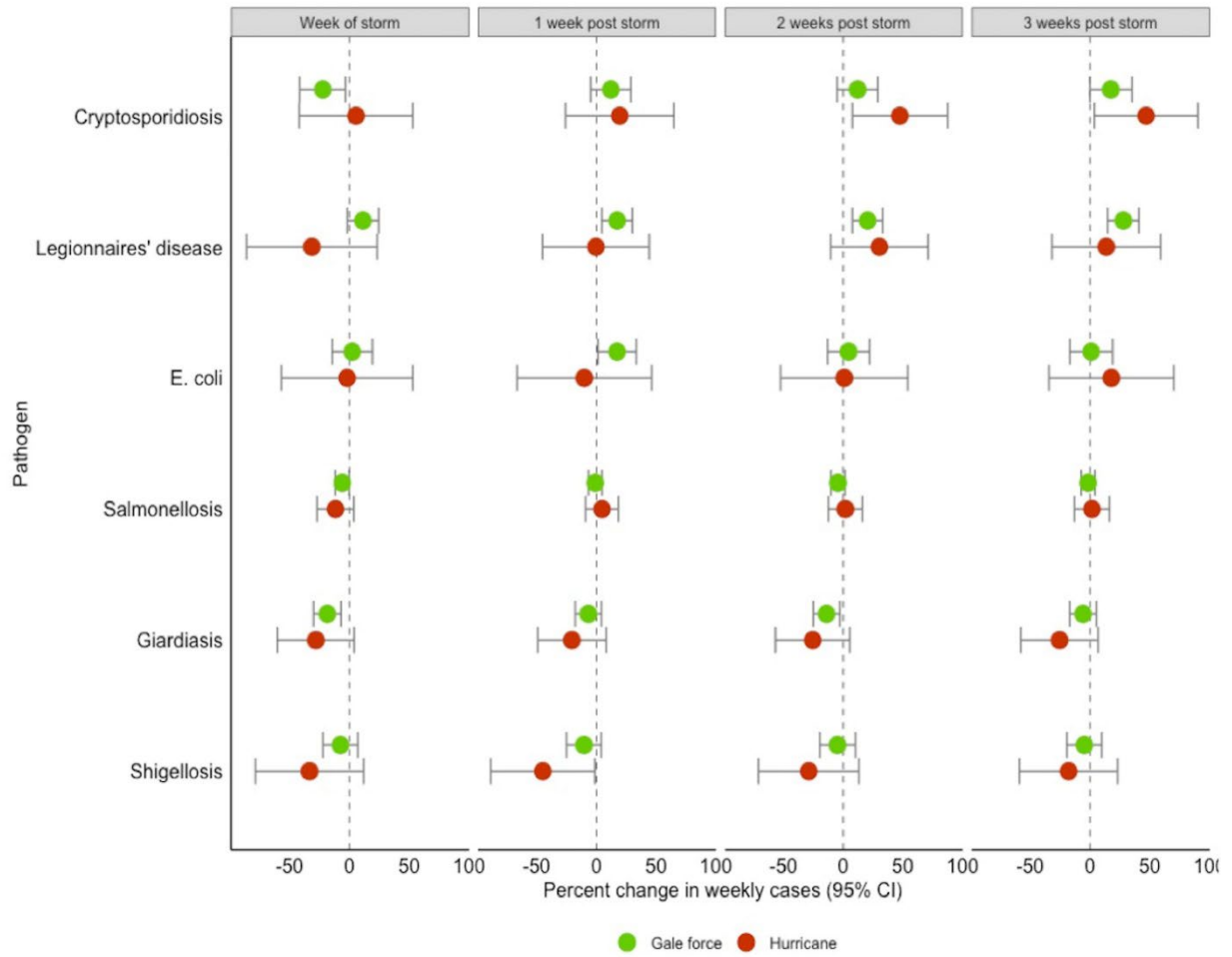
**Appendix Figure 6.** Correlation matrix for storm exposure thresholds for rainfall, windspeed, and distance from storm track in a study of waterborne infectious diseases associated with exposure to tropical cyclonic storms, United States, 1996–2018.



**Appendix Figure 7.** Number of tropical cyclonic storms that made landfall each year in the United States, 1996–2018.



**Appendix Figure 8.** Average percent change in weekly cases of waterborne infectious diseases associated with exposure to tropical cyclones, United States, 1996–2018. Exposure is defined as being  $\leq 250$  km of the storm track. The estimates (shape) and Bonferroni-corrected 95% CIs (bars) are reported for each infectious disease (color) and population-exposure threshold (shape); estimates are reported for week of the storm (week 0) and 1–3 weeks post storm.



**Appendix Figure 9.** Average percent change in weekly cases of waterborne infectious diseases associated with exposure to tropical cyclones, United States, 1996–2018. Exposure is defined as sustained gale-force winds,  $\geq 34$  knots (green) or hurricane-force winds,  $\geq 64$  knots (red) and 5% state population in the exposed threshold. The estimates (shape) and Bonferroni-corrected 95% CIs (bars) are reported for each infectious disease (color) and population-exposure threshold (shape); estimates are reported for week of the storm (week 0) and 1–3 weeks post storm.