

6. Yang W-C, Wu B-J, Sierra E, Fernandez A, Groch KR, Catão-Dias JL, et al. A simultaneous diagnosis and genotyping method for global surveillance of cetacean morbillivirus. *Sci Rep.* 2016;6:30625. <https://doi.org/10.1038/srep30625>
7. Grant M, Bröjer C, Zohari S, Nöremark M, Uhlhorn H, Jansson DS. Highly pathogenic avian influenza (HPAI H5Nx, clade 2.3.4.4.b) in poultry and wild birds in Sweden: synopsis of the 2020–2021 season. *Vet Sci.* 2022;9:344. <https://doi.org/10.3390/vetsci9070344>
8. Yamaji R, Saad MD, Davis CT, Swayne DE, Wang D, Wong FYK, et al. Pandemic potential of highly pathogenic avian influenza clade 2.3.4.4 A(H5) viruses. *Rev Med Virol.* 2020;30:e2099. <https://doi.org/10.1002/rmv.2099>
9. Bröjer C, Ågren EO, Uhlhorn H, Bernodt K, Mörner T, Jansson DS, et al. Pathology of natural highly pathogenic avian influenza H5N1 infection in wild tufted ducks (*Aythya fuligula*). *J Vet Diagn Invest.* 2009;21:579–87. <https://doi.org/10.1177/104063870902100501>
10. Rijks JM, Hesselink H, Lollinga P, Wesselman R, Prins P, Weesendorp E, et al. Highly pathogenic avian influenza A (H5N1) virus in wild red foxes, the Netherlands, 2021. *Emerg Infect Dis.* 2021;27:2960–2. <https://doi.org/10.3201/eid2711.211281>

Address for correspondence: Aleksija Neimanis, Department of Pathology and Wildlife Diseases, National Veterinary Institute (SVA), SE-751 89 Uppsala, Sweden; email: [aleksija.neimanis@sva.se](mailto:aleksija.neimanis@sva.se)

## SARS-CoV-2 Omicron Replacement of Delta as Predominant Variant, Puerto Rico

Gilberto A. Santiago, Hannah R. Volkman, Betzabel Flores, Glenda L. González, Keyla N. Charriez, Limari Cora Huertas, Steven M. Van Belleghem, Vanessa Rivera-Amill, Chelsea Major, Candimar Colon, Rafael Tosado, Laura E. Adams, Melissa Marzán, Lorena Hernández, Iris Cardona, Eduardo O'Neill, Gabriela Paz-Bailey, Riccardo Papa, Jorge L. Muñoz-Jordan

Author affiliations: Centers for Disease Control and Prevention, San Juan, Puerto Rico (G.A. Santiago, H.R. Volkman, B. Flores, G.L. González, K.N. Charriez, C. Major, C. Colon, R. Tosado, L.E. Adams, G. Paz-Bailey, J.L. Muñoz-Jordan); University of

Puerto Rico Molecular Sciences and Research Center, San Juan (L.C. Huertas, S.M. Van Belleghem, R. Papa); Ponce Research Institute, Ponce Health Sciences University, Ponce, Puerto Rico (V. Rivera-Amill); Puerto Rico Department of Health, San Juan (M. Marzán, L. Hernández, I. Cardona); Centers for Disease Control and Prevention, Atlanta, Georgia, USA (E. O'Neill)

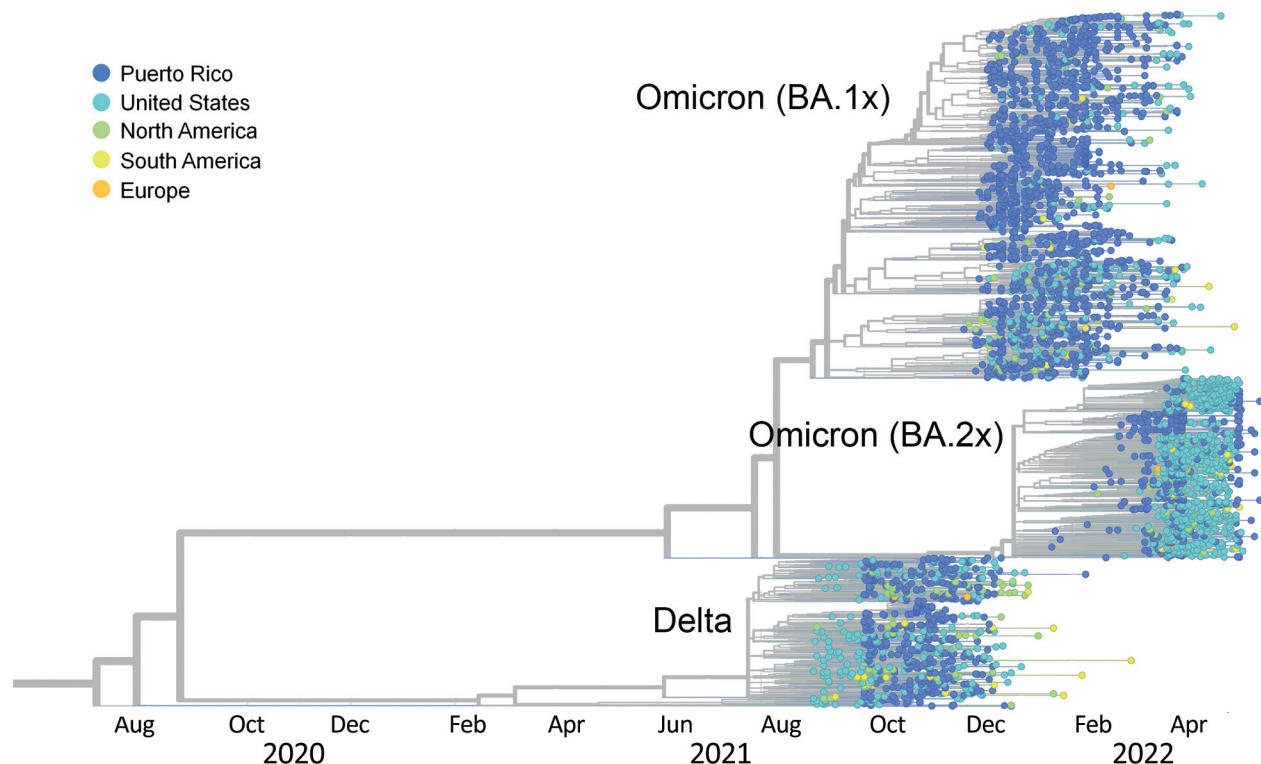
DOI: <https://doi.org/10.3201/eid2904.221700>

We reconstructed the SARS-CoV-2 epidemic caused by Omicron variant in Puerto Rico by sampling genomes collected during October 2021–May 2022. Our study revealed that Omicron BA.1 emerged and replaced Delta as the predominant variant in December 2021. Increased transmission rates and a dynamic landscape of Omicron sublineage infections followed.

Since the arrival of SARS-CoV-2 in Puerto Rico in March 2020, epidemic waves of COVID-19 have occurred on the island during the emergence of several variants of concern. Genomic surveillance conducted by partnered public health and academic groups reported an epidemic wave caused by the Alpha variant in April 2021, which coincided with the vaccination campaign for adults (1). Despite the detection of other variants of interest or concern, circulation of most of those variants was limited. According to the Puerto Rico Department of Health, the Delta variant has caused >49,000 confirmed cases since June 2021 (Appendix 1, <https://wwwnc.cdc.gov/EID/article/29/4/22-1700-App1.pdf>). The epidemic wave began to decline in August 2021, reaching its lowest rate since the beginning of the Delta wave in December 2021. This decline was possibly associated with the successful COVID-19 vaccination program, in which 83% of the eligible population of Puerto Rico had received the initial series of COVID-19 vaccines by October 31, 2021 (2,3).

The first confirmed case of the Omicron variant in Puerto Rico was reported on November 29, 2021, and within a week, Omicron had replaced Delta to become the dominant circulating variant. The relatively low circulation of Delta, combined with Omicron's high transmissibility and the waning of protective immunity before the vaccine booster campaign, might all have contributed to the rapid spread of this variant (4). The first Omicron peak was 9.1 times higher than any previous SARS-CoV-2 epidemic peak documented in Puerto Rico (Appendix Figure 1). By May 31, 2022, epidemic waves of the Omicron variant had caused ≈494,200 cases, peaking appreciably around January and May 2022.

We analyzed the Delta and Omicron sublineage turnover dynamics by using all the SARS-CoV-2



**Figure.** Decline of SARS-CoV-2 Delta variant and emergence of Omicron sublineages BA.1 and BA.2, illustrated by time-calibrated phylogenetic tree inferred with *ncov augur/auspice* workflow to represent the molecular evolution of the Delta variant in Puerto Rico since October 1, 2021, and subsequent expansion of the Omicron variant through May 30, 2022. Taxa labels are color-coded by geographic region of sampling to present the phylogenetic relatedness of viruses from Puerto Rico (dark blue) to viruses from the United States (light blue) and other regions of the world.

genomes from Puerto Rico sampled during October 2021–May 2022 available in GISAID (<https://www.gisaid.org>) as of June 8, 2022. By the end of December 2021, the Omicron sublineage BA.1 accounted for >60% of the sampled genomes, and the BA.1.1 sublineage dominated circulation until late March 2022 (Appendix Figure 2). Sublineage BA.2 began cocirculating with BA.1 sublineages in late January 2022 and remained at a low level until late March 2022, when it replaced BA.1.1 as the dominant sublineage. Subsequently, sublineage BA.2 caused another epidemic wave that peaked in mid-April 2022 (Appendix Figure 2). A period of sustained high transmission characterized the second Omicron wave; positive test rates for both antigen and molecular tests remained at >10% during April–August 2022.

To elucidate the emergence of the Omicron variant and subsequent replacement of Delta as the predominant variant, we used a phylogenetic approach to reconstruct the SARS-CoV-2 epidemic in Puerto Rico (Figure). We sequenced 2,377 SARS-CoV-2 complete genomes directly from reverse transcription PCR-positive diagnostic samples collected in Puerto Rico

during the study period (1). We conducted time-calibrated phylogenetic analyses locally using the *ncov augur/auspice* pipeline (<https://docs.nextstrain.org/projects/ncov/en/latest/index.html>) with a custom subsample from the Puerto Rico dataset in GISAID and a custom subsample of contextual genomes derived from the GISAID NextRegion-North America dataset representative of the Americas, with an emphasis on the United States and the Caribbean region (Appendix). Our analysis demonstrates that the rapid emergence and expansion of the Omicron BA.1 sublineage during the decline of Delta is concordant with the epidemiologic trends reported during the same period (Figure; Appendix). Most genomes from Puerto Rico are closely related to genomes sampled in the United States, suggesting frequent virus introductions by infected travelers, as previously observed for other SARS-CoV-2 variants on the island (1). Tree topology shows the genomes from Puerto Rico grouping in multiple monophyletic clusters, suggesting that multiple importations propelled the expansion of subvariants. Our analysis also demonstrates the cumulative increase and subsequent expansion of BA.2

while it cocirculated with BA.1.1. We observed 2 distinct clusters of BA.2 genomes in the tree, suggesting 2 waves of BA.2 sublineage expansion. The first wave, detected in late March 2022, consisted of a variety of BA.2 sublineages, whereas the second wave in mid-May 2022 was caused by sublineage BA.2.12.1, which replaced all other sublineages (Figure).

Our findings show that Omicron BA.1 seems to have emerged in a scenario favorable for rapid expansion, in which rates of transmission for Delta were low and protection from the vaccine or natural infection was waning in the population (3,5). An effective booster vaccination campaign by late 2021 could possibly have mitigated the BA.1 epidemic wave, although the occurrence of a second wave of BA.2 suggests this sublineage is more resistant to mRNA vaccines (6,7). The SARS-CoV-2 genomic epidemiology trends observed in Puerto Rico during the period of circulation of the Delta and Omicron variants resemble the trends reported in the United States (8). Additional increases in positive cases could be expected upon introduction of the BA.4 and BA.5 sublineages.

### Acknowledgments

We thank our partners from the Puerto Rico Department of Health, especially the staff from the Institute of Public Health Laboratories and the Biological and Chemical Emergencies Laboratory for their contribution to the genomic surveillance framework and sample procurement. We acknowledge all healthcare workers and authors submitting data to GISAID.

This project was partially funded by the Centers for Disease Control and Prevention's Advanced Molecular Detection Program and the COVID-19 Laboratory Task Force, the Puerto Rico Science, Technology and Research Trust (V.R.-A.), NIMHD U54MD007579 (VRA), and CDC U01CK000580 (V.R.-A.). Additional funding for this study was provided by the National Institute of General Medical Sciences of the National Institute of Health under award number U54GM133807 (NoA: 5U54GM133807-02 to R.P.). Some of the sequencing work was conducted at the University of Puerto Rico Sequencing and Genomics facility funded by INBRE Grant P20 GM103475 from the National Institute for General Medical Sciences (NIGMS), a component of the National Institutes of Health (NIH), and the Bioinformatics Research Core of the INBRE. The content is solely the responsibility of the authors and does not necessarily represent the official views of the National Institutes of Health. This project was also supported by UPR COVID-19 emergency funds (#2020-2488 to R.P.).

All genome sequences and associated metadata in this dataset are published in GISAID's EpiCoV database, EPI\_

SET\_220930nq. To view the contributors of each individual sequence with details such as accession number, virus name, collection date, originating lab and submitting lab, and the list of authors, please visit [https://epicov.org/epi3/epi\\_set/220930nq](https://epicov.org/epi3/epi_set/220930nq) for contextual genomes and list of genomes generated by this study.

### About the Author

Dr. Santiago is a lead research microbiologist at the Centers for Disease Control and Prevention, National Centers for Emerging and Zoonotic Infectious Diseases, Division of Vector Borne Diseases, Dengue Branch, San Juan, Puerto Rico. His research is focused on the development of molecular diagnostic tests and genomic epidemiology of dengue virus, Zika virus, and SARS-CoV-2.

### References

1. Santiago GA, Flores B, González GL, Charriez KN, Huertas LC, Volkman HR, et al. Genomic surveillance of SARS-CoV-2 in Puerto Rico enabled early detection and tracking of variants. *Commun Med (Lond)*. 2022;2:100. <https://doi.org/10.1038/s43856-022-00168-7>
2. Centers for Disease Control and Prevention. COVID-19 vaccinations in the United States, county. 2022 [cited 2022 Aug 31]. <https://data.cdc.gov/Vaccinations/COVID-19-Vaccinations-in-the-United-States-County/8xkx-amqh/data>
3. Cuadros DF, Moreno CM, Musuka G, Miller FD, Coule P, MacKinnon NJ. Association between vaccination coverage disparity and the dynamics of the COVID-19 Delta and Omicron waves in the US. *Front Med (Lausanne)*. 2022;9:898101. <https://doi.org/10.3389/fmed.2022.898101>
4. Gram MA, Emborg HD, Schelde AB, Friis NU, Nielsen KF, Moustsen-Helms IR, et al. Vaccine effectiveness against SARS-CoV-2 infection or COVID-19 hospitalization with the Alpha, Delta, or Omicron SARS-CoV-2 variant: a nationwide Danish cohort study. *PLoS Med*. 2022;19:e1003992. <https://doi.org/10.1371/journal.pmed.1003992>
5. Chaguzza C, Coppi A, Earnest R, Ferguson D, Kerantzas N, Warner F, et al. Rapid emergence of SARS-CoV-2 Omicron variant is associated with an infection advantage over Delta in vaccinated persons. *Med (N Y)*. 2022;3:325-334.e4. <https://doi.org/10.1016/j.medj.2022.03.010>
6. Yamasoba D, Kimura I, Nasser H, Morioka Y, Nao N, Ito J, et al.; Genotype to Phenotype Japan (G2P-Japan) Consortium. Virological characteristics of the SARS-CoV-2 Omicron BA.2 spike. *Cell*. 2022;185:2103-2115.e19. <https://doi.org/10.1016/j.cell.2022.04.035>
7. Garcia-Beltran WF, St Denis KJ, Hoelzemer A, Lam EC, Nitido AD, Sheehan ML, et al. mRNA-based COVID-19 vaccine boosters induce neutralizing immunity against SARS-CoV-2 Omicron variant. *Cell*. 2022;185:457-466.e4. <https://doi.org/10.1016/j.cell.2021.12.033>
8. Centers for Disease Control and Prevention. COVID data tracker. 2022 [cited 2021 Nov 16]. <https://covid.cdc.gov/covid-data-tracker/#variants-genomic-surveillance>

Address for correspondence: Gilberto A. Santiago, Centers for Disease Control and Prevention, 1324 Cañada St, San Juan 00920, Puerto Rico; email: GSantiago@cdc.gov

Article DOI: <https://doi.org/10.3201/eid2904.221700>

*EID cannot ensure accessibility for supplementary materials supplied by authors.  
Readers who have difficulty accessing supplementary content should contact the authors for assistance.*

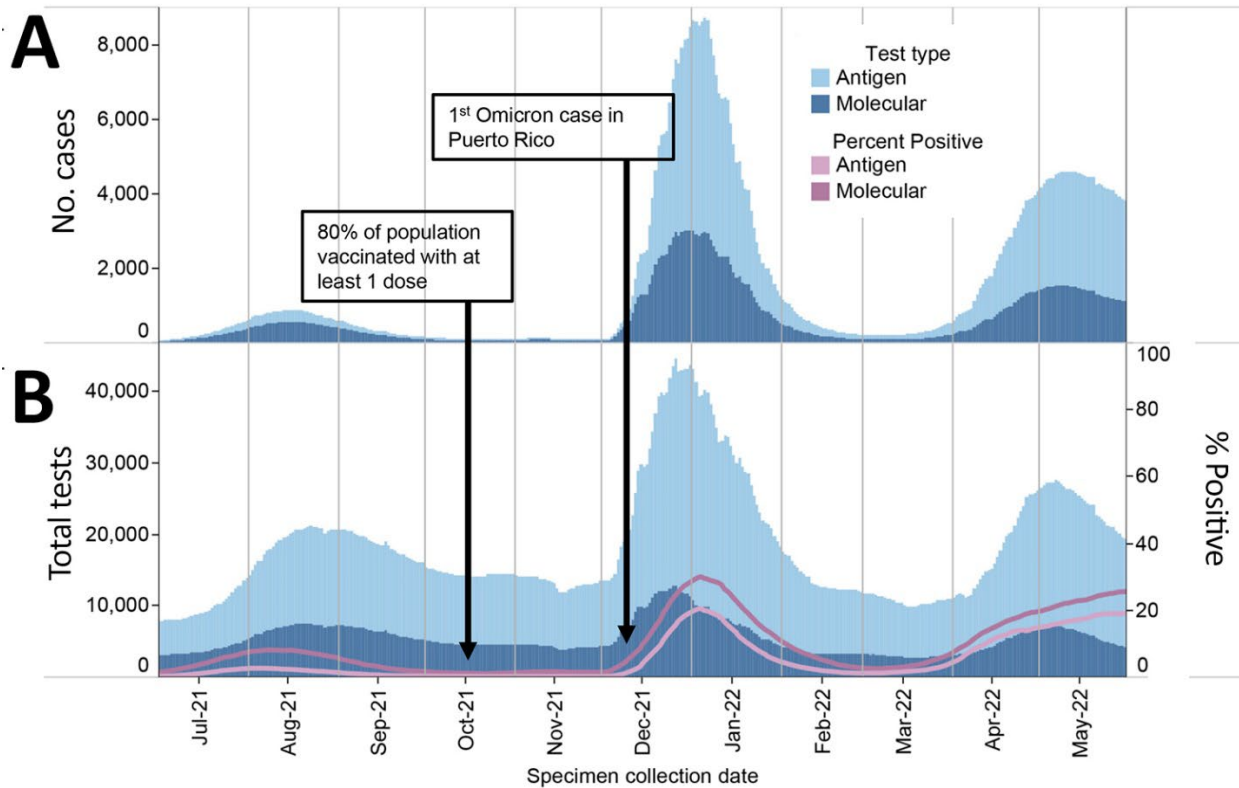
# SARS-CoV-2 Omicron Replacement of Delta as Predominate Variant, Puerto Rico

## Appendix

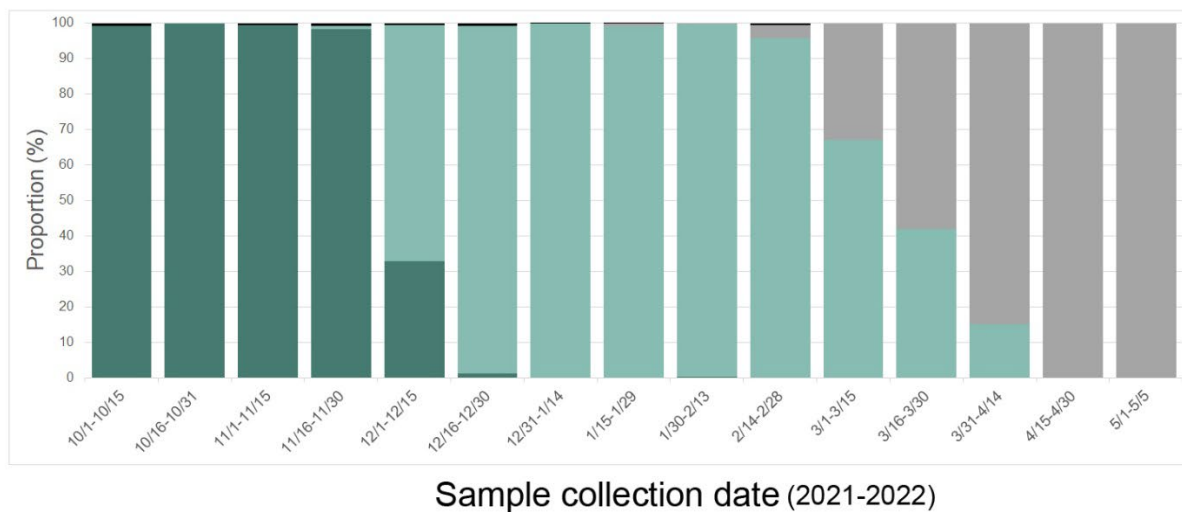
### **SARS-CoV-2 Genomes Used in this Study and Acknowledgment of Sequence**

#### **Authors**

All genome sequences and associated metadata in this dataset are published in GISAID's EpiCoV database, EPI\_SET\_220930nq. To view the contributors of each individual sequence with details such as accession number, virus name, collection date, originating lab and submitting lab, and the list of authors, please visit [https://epicov.org/epi3/epi\\_set/220930nq](https://epicov.org/epi3/epi_set/220930nq) for contextual genomes and list of genomes generated by this study.



**Appendix Figure 1.** Epidemic curve of SARS-CoV-2 cases identified through molecular or antigen testing reported to the Puerto Rico Department of Health, July 2021-May 2022. A) Number of SARS-CoV-2 molecular or antigen tests reported to the Puerto Rico Department of Health and percent of reported tests positive, July 2021-May 2022. B) Epidemic curve, test counts, and percent of tests positive are visualized using a 21-day, centered moving average for clarity of trends.



**Appendix Figure 2.** SARS-CoV-2 variant turn-over in Puerto Rico. Proportion of Delta variant and Omicron sub-lineages detected in Puerto Rico by genomic surveillance during October 1, 2021–May 30, 2022. All genomes sampled in Puerto Rico published in GISAID with collection dates within the study period were included (n = 4,204 genomes downloaded from GISAID on June 8, 2022). Delta variant is presented with bars in dark green, Omicron sublineage BA.1x in light green, and Omicron sublineage BA.2x in gray.