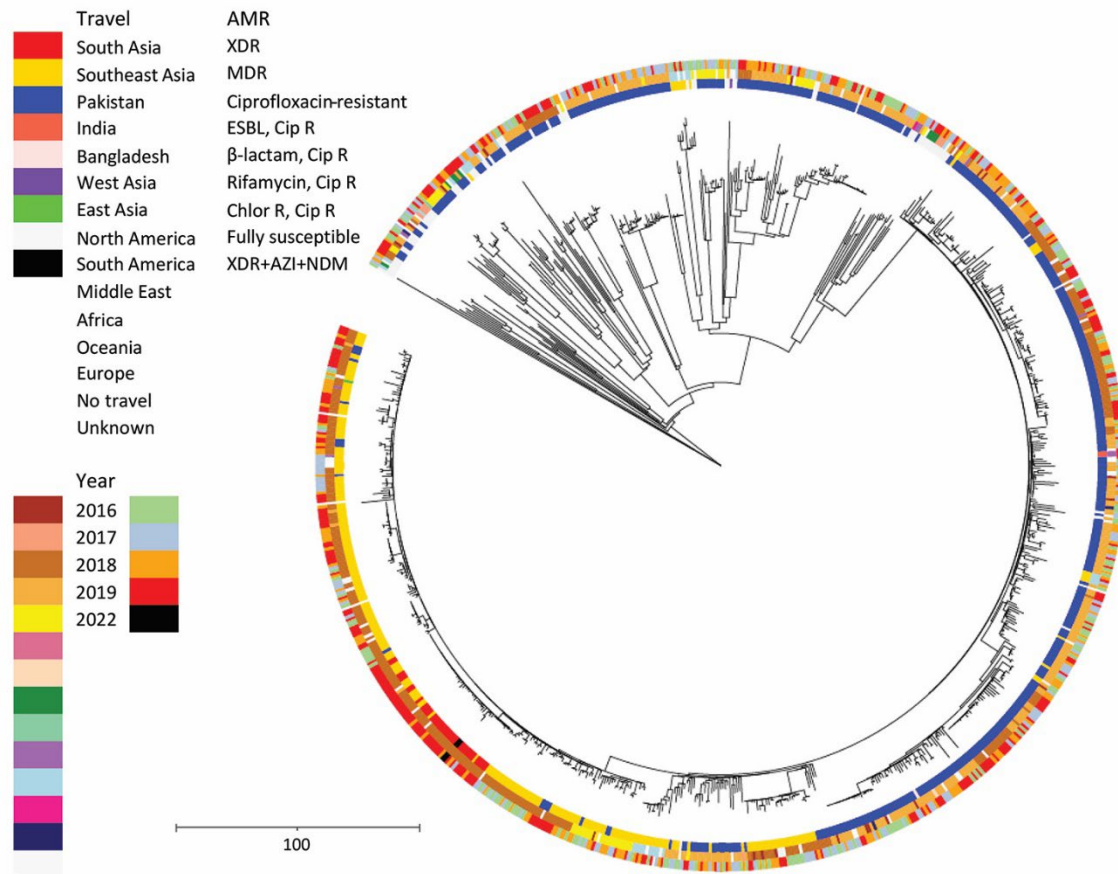


Case of Carbapenem-Resistant *Salmonella* Typhi Infection, Pakistan, 2022

Appendix



Appendix Figure. Phylogeny of the *Salmonella* Typhi in England, 2016–2019, including imported ESBL producing strains (*bla*_{CTX-M-15}) and the case for Pakistan. Phylogenetic tree of cgMLST analysis of *S.* Typhi strains generated using the neighbor-joining method and mapped against three categories: inner ring, AMR (XDR, extensively drug resistant strains; MDR, multidrug resistant strains; Cip R, ciprofloxacin-resistant strains; ESBL, extended-spectrum β-lactamase producing strains; Chlor R, chloramphenicol-resistant strains, XDR+AZI+NDM, XDR with azithromycin and carbapenemase resistance); middle ring, travel; outer ring, year. Both pan-resistant strains from 2022 (black) fall into the HC5_1452 XDR sub-cluster associated with travel to Pakistan.