
Serial Intervals for SARS-CoV-2 Omicron and Delta Variants, Belgium, November 19–December 31, 2021

Cécile Kremer,¹ Toon Braeye,¹ Kristiaan Proesmans, Emmanuel André, Andrea Torneri, Niel Hens

We investigated the serial interval for SARS-CoV-2 Omicron BA.1 and Delta variants and observed a shorter serial interval for Omicron, suggesting faster transmission. Results indicate a relationship between empirical serial interval and vaccination status for both variants. Further assessment of the causes and extent of Omicron dominance over Delta is warranted.

The World Health Organization designated the SARS-CoV-2 Omicron BA.1 variant (B.1.1.529) as a variant of concern (VOC) on November 26, 2021 (1). Omicron shows a fast epidemic growth and has taken over as the dominant VOC from the previously dominant Delta variant (B.1.617.2) worldwide. In Belgium, the Omicron variant was the dominant circulating strain during December 27, 2021–January 9, 2022, identified in 88.5% of sequenced samples (2). The Omicron variant is more efficient at evading immunity, acquired from previous infection or vaccination (3,4), compared with the Delta variant. Another epidemiologic characteristic that may contribute to the rapid spread of Omicron is increased transmissibility, possibly attributable to an increase in the reproduction number or a shortened serial interval (i.e., the time difference between symptom onset in an infector and infectee) (5). In this study, we estimate the means and SDs of the serial interval for the Omicron and Delta variants and assess whether these variants are associated with different observed serial intervals. To gain more insights on the possible effects of vaccination, we also compare the observed serial intervals for different combinations of vaccination status in transmission pairs.

The Study

Belgium has a contact tracing system in place, where COVID-19 confirmed case-patients are asked about their contacts from 2 days before symptom onset until 10 days after. We used genotype sequencing to detect variants. If a variant was found in a transmission chain, all case-patients belonging to that chain were assumed to be infected by that variant. We collected transmission pairs that could be linked either to Omicron or Delta infections in which the infector reported first symptoms during November 19–December 31, 2021. During this period, Omicron started to spread in Belgium and took over dominance from the Delta variant (6). The same nonpharmaceutical interventions were in place throughout this period; the stringency index (indicating the strictness of measures on a scale from 0 to 100) was 48. We assumed that the first confirmed case in a reconstructed transmission pair (i.e., the index case-patient) was the infector and the contact was the infectee. We excluded transmission pairs for which symptom onset was not available for either case, as well as pairs for which the observed serial interval was <−5 days or >15 days to ensure biologically plausible serial intervals (7,8). We assigned vaccination status to both cases in a transmission pair as unvaccinated (including partially vaccinated), vaccinated (i.e., completed vaccination cycle), and vaccinated plus booster (Appendix, <https://wwwnc.cdc.gov/EID/article/28/6/22-0220-App1.pdf>).

Of the 2,495 included transmission pairs, 86.61% were linked to transmission of the Omicron variant (Appendix Figure 1). We report the means and SDs of the observed serial intervals; the median was 3 days for all stratifications. All reported p values are based on a Mann-Whitney U test. We further stratified transmission pairs by household and vaccination status (Appendix Tables 1, 2).

Author affiliations: Hasselt University, Hasselt, Belgium (C. Kremer, A. Torneri, N. Hens); Sciensano, Brussels, Belgium (T. Braeye, K. Proesmans); Katholieke Universiteit Leuven, Leuven, Belgium (E. André); University Hospitals Leuven, Leuven (E. André); University of Antwerp, Antwerp, Belgium (N. Hens)

DOI: <https://doi.org/10.3201/eid2808.220220>

¹These first authors contributed equally to this article.

The empirical serial interval distribution for Omicron had a mean of 2.75 days (SD 2.53 days), compared with 3.00 days (SD 2.48 days) for Delta ($p = 0.019$) (Figures 1, panels A, B). We estimated parameters of the normal distribution fit to both empirical serial interval distributions (Table; Figure 1, panel C). The empirical serial interval distribution for Omicron also was shorter than that for Delta within households (Table; Appendix Figure 2).

No difference in mean empirical serial intervals was found for pairs where both case-patients were unvaccinated or only partially vaccinated (2.69 vs. 2.54 days; $p = 0.931$) (Figure 2, panels A, B). For transmission pairs in which both case-patients were vaccinated (without booster), the mean empirical serial interval for Omicron was significantly shorter than that for Delta (2.63 vs. 3.38 days; $p = 0.004$) (Figure 2, panels C, D). The mean empirical serial interval for Omicron was longer for pairs that received a booster vaccine than for pairs that were vaccinated with only 2 doses (3.34 vs. 2.63 days; $p = 0.065$) (Figure 2, panels C–E). The mean empirical serial interval was significantly longer for the Delta variant in transmission pairs in which both

case-patients completed the vaccination cycle, compared with those where both case-patients were unvaccinated or only partially vaccinated (3.38 versus 2.54 days; $p = 0.045$) (Figure 2, panels B–D).

Conclusions

Our estimates of the empirical serial interval for Omicron are in line with those previously reported. Lee et al. (9) reported a mean serial interval of 2.8 days, and Kim et al. (10) estimated the mean serial interval to be 2.22 days (SD 1.62 days). Backer et al. (7) reported a mean serial interval of 3.5 and 3 days in 2 consecutive weeks for Omicron within-household pairs; in line with our findings, they found the interval to be shorter than that for Delta pairs. Shorter serial intervals suggest a possibly shorter generation time for the Omicron variant compared with Delta, pointing to faster transmission, which could explain the rapid growth that is observed for the Omicron variant. However, control measures and asymptomatic transmission may lead to different serial and generation interval distributions (11). Future studies estimating the generation interval for both variants are needed to shed more light on this matter.

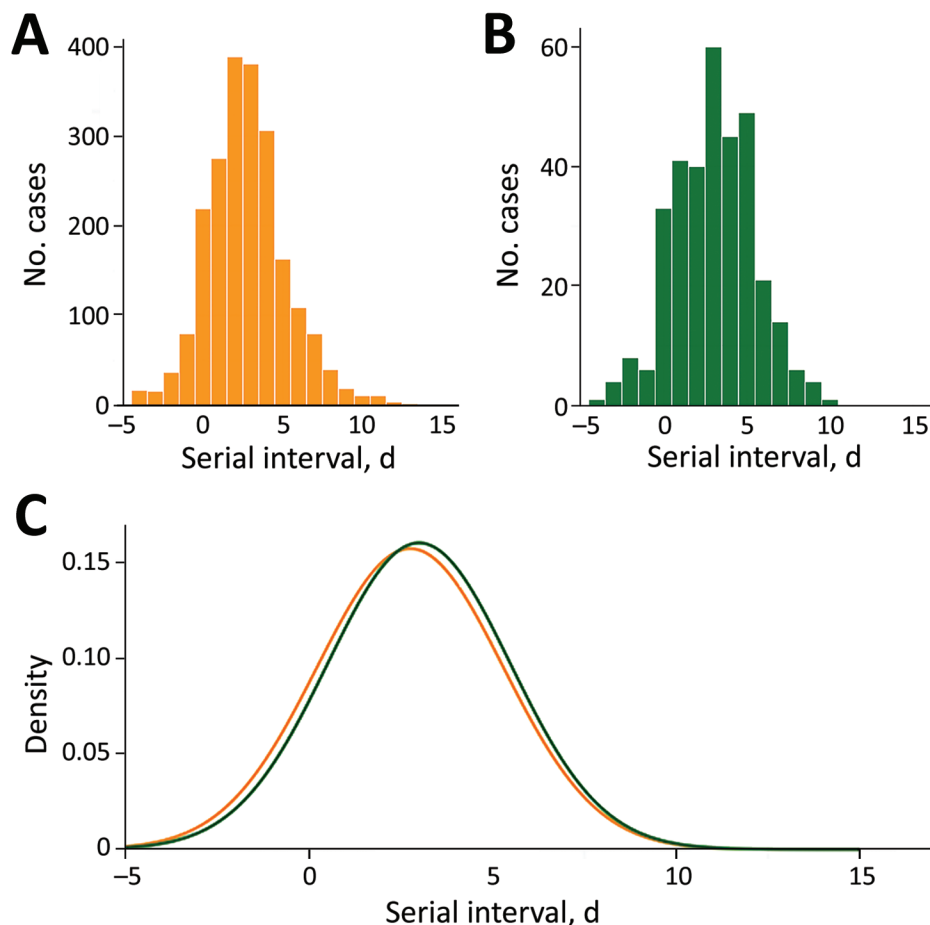


Figure 1. Empirical (A–B) and fitted normal (C) distributions of the serial intervals for SARS-CoV-2 Omicron and Delta variants, Belgium, for cases with onset date of infector during November 19–December 31, 2021.

Table. Estimated parameters of a normal distribution for the serial interval of SARS-CoV-2 Omicron and Delta variants, by different stratifications, Belgium, November 19–December 31, 2021*

Variant	Stratification	No. transmission pairs	Posterior median (95% CrI)	SD (95% CrI)
Omicron	None	2,161	2.75 (2.65–2.86)	2.54 (2.46–2.61)
Delta	None	334	3.00 (2.73–3.26)	2.49 (2.31–2.69)
Omicron	Within-household	1,412	2.80 (2.67–2.93)	2.60 (2.50–2.70)
Delta	Within-household	278	3.04 (2.75–3.33)	2.43 (2.24–2.65)
Omicron	Between-household	672	2.72 (2.53–2.90)	2.44 (2.31–2.57)
Delta	Between-household	50	2.78 (2.00–3.56)	2.78 (2.30–3.45)
Omicron	Both unvaccinated	346	2.69 (2.40–2.98)	2.75 (2.55–2.96)
Delta	Both unvaccinated	61	2.54 (1.96–3.12)	2.29 (1.93–2.78)
Omicron	Both vaccinated	774	2.63 (2.46–2.81)	2.45 (2.33–2.58)
Delta	Both vaccinated	97	3.38 (2.89–3.88)	2.47 (2.16–2.86)
Omicron	Both vaccinated + booster	47	3.34 (2.58–4.10)	2.59 (2.13–3.24)
Delta	Both vaccinated + booster	0	NA	NA

*No Delta transmission pairs in which both case-patients had received a booster vaccine were reported. CrI, credible interval; NA, not available

The first limitation of our study is that self-reported symptom onset dates and contacts may be subject to recall bias. Likewise, the level of reporting contacts may differ for each person. We have used all reported transmission pairs, although some of them may have been wrongly assigned. We further assume that directionality of transmission was from index to contact, which may not be correct for each pair. However, because the same assumption was made for both variants, the comparison of serial intervals still holds, although serial interval lengths should be interpreted with caution. In addition, contacts were required to quarantine, which limited possible exposure from sources other than the reported index case-patient. We also do not explicitly account for right truncation (12); this choice is assumed not to affect our estimates because symptomatic infectees probably were not missed, given that we used the data available on January 17, 2022, but limited the serial interval to no more than 15 days. However, because contacts are reconstructed until 2 days before

symptom onset of the index case-patient, possible left truncation might lead to exclusion of some transmission pairs. Selection bias attributable to targeted genotype sequencing of suspected Omicron cases (such as previously infected cases or travelers) might also have occurred, whereas genotype sequencing resulting in confirmed Delta cases might have been performed on samples from a hospital setting because severe disease was an indication for sequencing during the study period. This analysis does not correct for age or for previous infection; reinfections might be overrepresented among the Omicron cases.

Our results suggest that the empirical mean serial interval increases when both case-patients have a higher level of vaccine-induced immunity. However, possibly because of limited sample size, we did not observe this pattern for all possible combinations of vaccination status (Appendix Figure 3); more data are needed to properly assess the relationship between vaccination and serial interval. The empirical

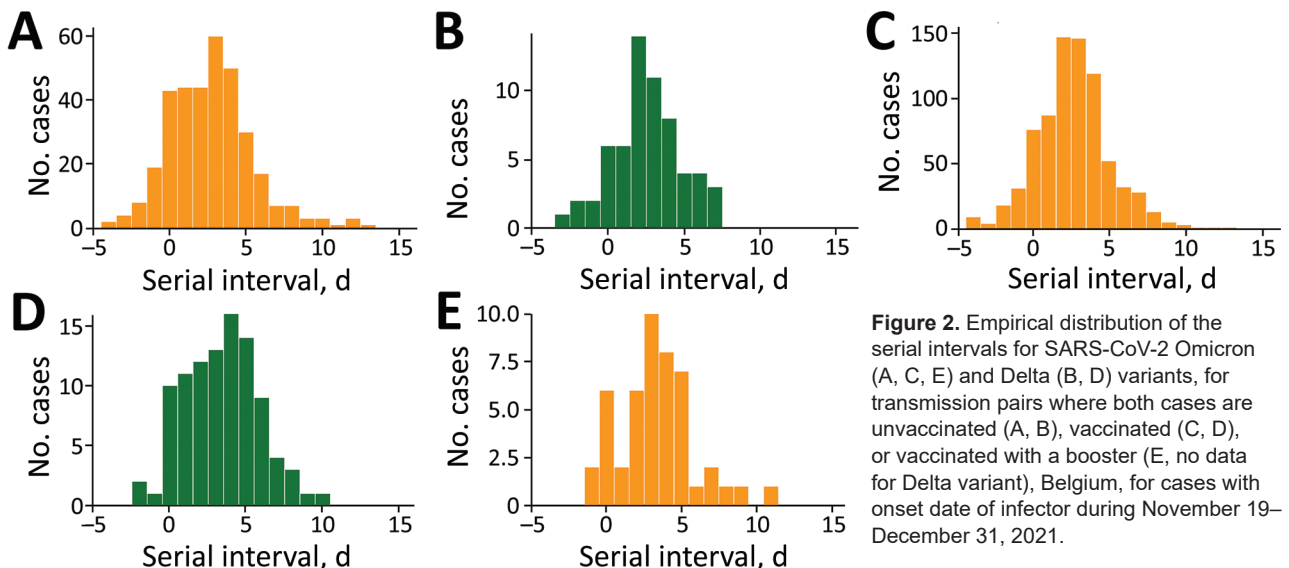


Figure 2. Empirical distribution of the serial intervals for SARS-CoV-2 Omicron (A, C, E) and Delta (B, D) variants, for transmission pairs where both cases are unvaccinated (A, B), vaccinated (C, D), or vaccinated with a booster (E, no data for Delta variant), Belgium, for cases with onset date of infector during November 19–December 31, 2021.

mean serial interval for unvaccinated and vaccinated (without booster) transmission pairs was similar for the Omicron variant. If vaccine-induced immunity and serial interval are positively correlated, this result might be explained by lower vaccine efficacy against Omicron for persons who have not yet received a booster vaccine. As the vaccination campaign progresses and more persons receive a booster vaccine, the reasons for and extent of Omicron's dominance over Delta might need to be reassessed.

Acknowledgments

We thank Nicola Low for the insightful comments on an earlier draft of this manuscript. Data are provided by Sciensano, the Belgian institute for health. Transmission pair data (without vaccination status for identifiability reasons) and R code for the analysis are available at https://github.com/cecilekremer/serial_interval.

N.H. and A.T. acknowledge funding from the European Union's Horizon 2020 Research and Innovation Programme's EpiPose project (grant agreement no. 101003688). N.H. acknowledges funding from the Antwerp Study Centre for Infectious Diseases and the chair in evidence-based vaccinology at the Methusalem Centre of Excellence Consortium VAX-IDEA. This project was supported by the VERDI project (grant no. 101045989), funded by the European Union. Views and opinions expressed are those of the authors only and do not necessarily reflect those of the European Union or the Health and Digital Executive Agency. Neither the European Union nor the granting authority can be held responsible for them.

The data analyses conducted in this work are among the legal tasks of Sciensano (artikel 4.4 Wet tot oprichting van Sciensano; article 4.4 Law establishment Sciensano). Article 4.4 explicitly states that Sciensano is authorized to collect, validate, analyze, report and archive data of a personal nature concerning public health. Sciensano is further authorized to make these processed data available with approval of the qualified sectoral committees. Such approval for these data was obtained from the Information Security Committee Social Security and Health.

Study conceptualization: N.H., A.T., C.K., T.B.; literature research: C.K., A.T., N.H.; data collection: T.B., K.P.; data analysis code: C.K.; data analysis: C.K., A.T., N.H.; results interpretation: A.T., C.K., N.H., E.A., T.B., K.P.; manuscript writing: C.K., A.T., N.H.; manuscript review: T.B., K.P., E.A., N.H., A.T., C.K.; coordination: N.H.

About the Author

Ms. Kremer is a PhD student in infectious disease modelling at Hasselt University, Hasselt, Belgium. Her research interests include infectious disease epidemiology

with a focus on public health policy. Dr. Braeye is a senior epidemiologist at Belgium's public health institute, Sciensano. He has been working mostly on vaccine-preventable infectious diseases.

References

1. World Health Organization. Tracking SARS-CoV-2 variants. 2021 [cited 2022 Jan 27]. <https://www.who.int/en/activities/tracking-SARS-CoV-2-variants>
2. Sciensano. COVID-19 weekly report. 2022 [cited 2022 Jan 27]. https://covid-19.sciensano.be/sites/default/files/Covid19/COVID-19_Weekly_report_NL.pdf
3. Cele S, Jackson L, Khoury DS, Khan K, Moyo-Gwete T, Tegally H, et al. SARS-CoV-2 Omicron has extensive but incomplete escape of Pfizer BNT162b2 elicited neutralization and requires ACE2 for infection. *Nature*. 2022;602:654–6. <https://doi.org/10.1038/s41586-021-04387-1>
4. Pulliam JRC, van Schalkwyk C, Govender N, von Gottberg A, Cohen C, Groome MJ, et al. Increased risk of SARS-CoV-2 reinfection associated with emergence of Omicron in South Africa. *Science*. 2022;376:eabn4947. <https://doi.org/10.1126/science.abn4947>
5. Svensson A. A note on generation times in epidemic models. *Math Biosci*. 2007;208:300–11. <https://doi.org/10.1016/j.mbs.2006.10.010>
6. Cuypers L, Maes P, Dellicour S, Van Weyenbergh J, Keyaerts E, Baele G, et al. Genomic surveillance of SARS-CoV-2 in Belgium. 2021 [cited 2022 Jan 27]. https://assets.uzleuven.be/files/2021-12/genomic_surveillance_update_211130.pdf
7. Backer JA, Eggink D, Andeweg SP, Veldhuijzen IK, van Maarseveen N, Vermaas K, et al. Shorter serial intervals in SARS-CoV-2 cases with Omicron variant compared to Delta variant in the Netherlands, 13–19 December 2021. *Euro Surveill*. 2022;27:2200042. <https://doi.org/10.2807/1560-7917.ES.2022.27.6.2200042>
8. He X, Lau EHY, Wu P, Deng X, Wang J, Hao X, et al. Temporal dynamics in viral shedding and transmissibility of COVID-19. *Nat Med*. 2020;26:672–5. <https://doi.org/10.1038/s41591-020-0869-5>
9. Lee JJ, Choe YJ, Jeong H, Kim M, Kim S, Yoo H, et al. Importation and transmission of SARS-CoV-2 B.1.1.529 (Omicron) variant of concern in Korea, November 2021. *J Korean Med Sci*. 2021;36:e346. <https://doi.org/10.3346/jkms.2021.36.e346>
10. Kim D, Ali ST, Kim S, Jo J, Lim J-S, Lee S, et al. estimation of serial interval and reproduction number to quantify the transmissibility of SARS-CoV-2 Omicron variant in South Korea. *Viruses*. 2022;14:533. <https://doi.org/10.3390/v14030533>
11. Torneri A, Libin P, Scalia Tomba G, Faes C, Wood JG, Hens N. On realized serial and generation intervals given control measures: The COVID-19 pandemic case. *PLOS Comput Biol*. 2021;17:e1008892. <https://doi.org/10.1371/journal.pcbi.1008892>
12. Linton NM, Kobayashi T, Yang Y, Hayashi K, Akhmetzhanov AR, Jung SM, et al. Incubation period and other epidemiological characteristics of 2019 novel coronavirus infections with right truncation: a statistical analysis of publicly available case data. *J Clin Med*. 2020;9:538. <https://doi.org/10.3390/jcm9020538>

Address for correspondence: Cécile Kremer, Hasselt University, Agoralaan gebouw D, 3590 Diepenbeek, Belgium; email cecile.kremer@uhasselt.be

Serial Intervals for SARS-CoV-2 Omicron and Delta Variants, Belgium, November 19–December 31, 2021

Appendix

Detailed Description of Data and Analysis

During the study period, contacts that were considered high-risk (typically close contact (<1.5m) for longer time periods (>15 min)), were required to take a PCR-test. A first test was taken as soon as possible, a second test, when the first test was negative, was taken 7 days after the last contact. In this way, contacts that test positive for SARS-CoV-2 can be linked to a previously confirmed case and transmission pairs can be reconstructed. Vaccination was deemed to be effective after 7 days for Pfizer (second dose), 14 days for Moderna or AstraZeneca (second dose), 21 days for J&J (only 1 dose), or 7 days for a booster vaccine (Pfizer or Moderna). Other possible combinations seen as a complete vaccination schedule were 1 dose AstraZeneca followed by a Pfizer dose, or 1 dose Pfizer followed by Moderna. Household status was assigned based on information collected during the interview with the index case or provided by the healthcare worker.

We first analyze all transmission pairs for both the Omicron and the Delta variant, reporting the empirical distribution and computing the empirical mean and standard deviation of the observed serial intervals. Furthermore, we fit a normal distribution to the observed serial intervals, accounting for negative serial intervals, i.e., when the infectee shows symptoms before the infector (I). Normal distributions were fit using Markov Chain Monte Carlo (MCMC) methods and we report the posterior median and 95% credibility interval (CrI) for the mean and standard deviation. We then compared observed serial intervals for transmission that took place within and between households, where the latter refers to infection between individuals that do not live together. Furthermore, we compared observed serial intervals based on the vaccination

status of cases. The significance of differences in observed serial intervals was tested using a Mann-Whitney U test, since the diagnostics for a *t*-test were not met.

Reference

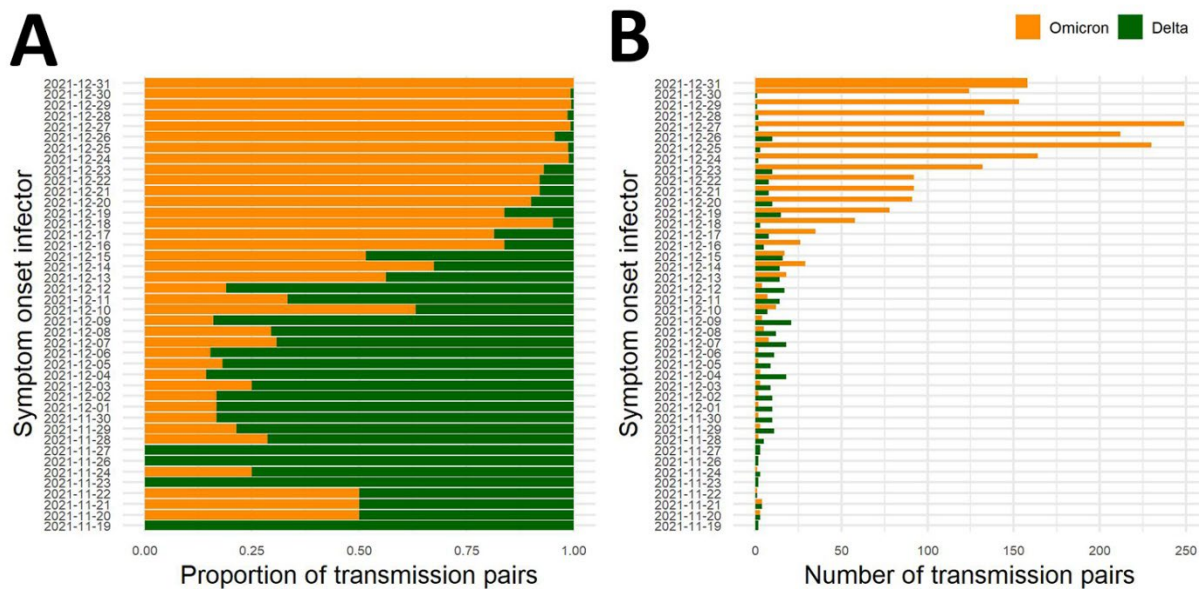
1. Ganyani T, Kremer C, Chen D, Torneri A, Faes C, Wallinga J, et al. Estimating the generation interval for coronavirus disease (COVID-19) based on symptom onset data, March 2020. Euro Surveill. 2020;25:2000257. [PubMed https://doi.org/10.2807/1560-7917.ES.2020.25.17.2000257](https://doi.org/10.2807/1560-7917.ES.2020.25.17.2000257)

Appendix Table 1. Proportion of within- and between-household transmission pairs for both variants

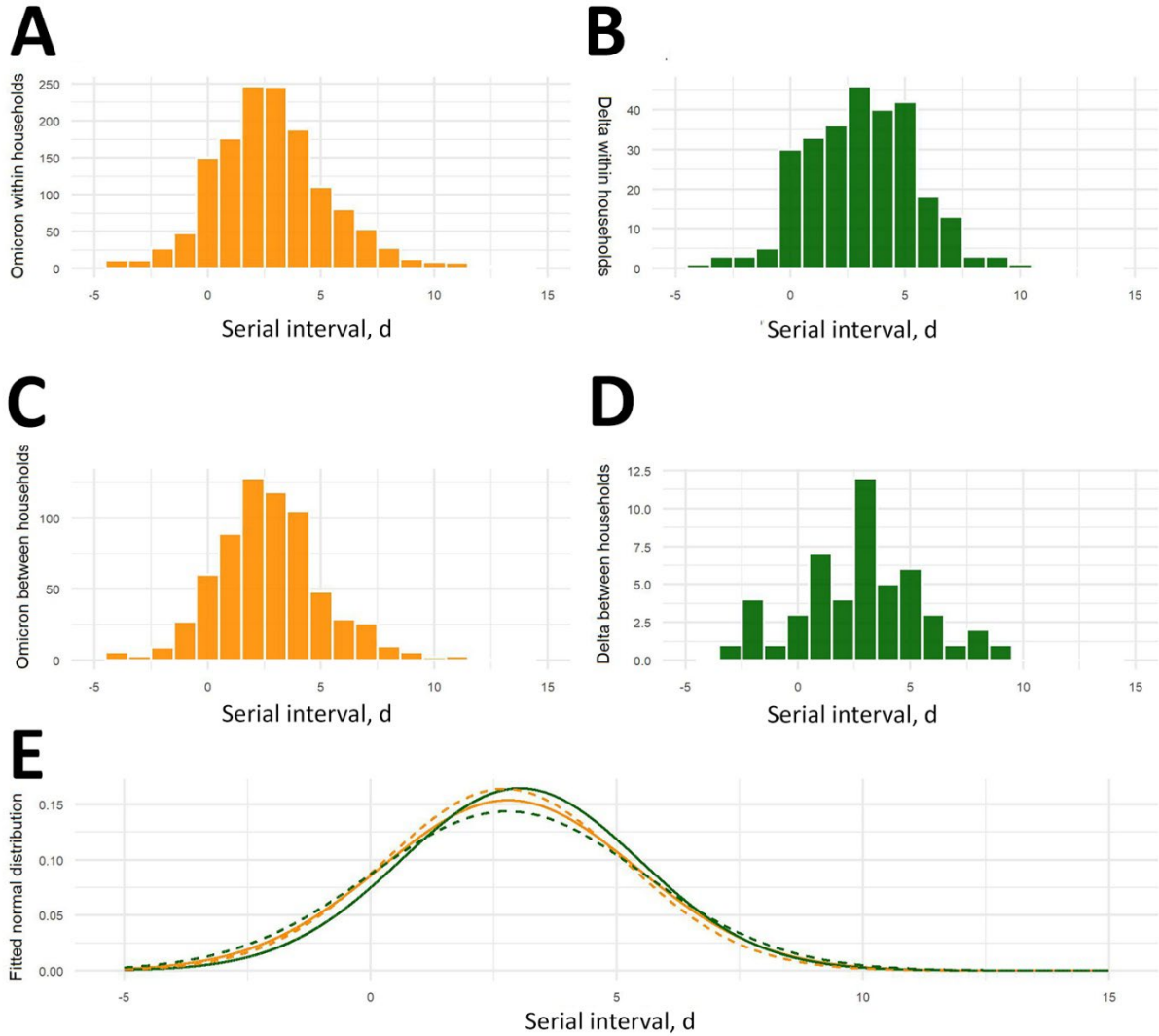
Household status	Variant	Proportion of all pairs
Within-household	Omicron	0.68
	Delta	0.85
Between-household	Omicron	0.32
	Delta	0.15

Appendix Table 2. Proportion of transmission pairs by vaccination status for both variants

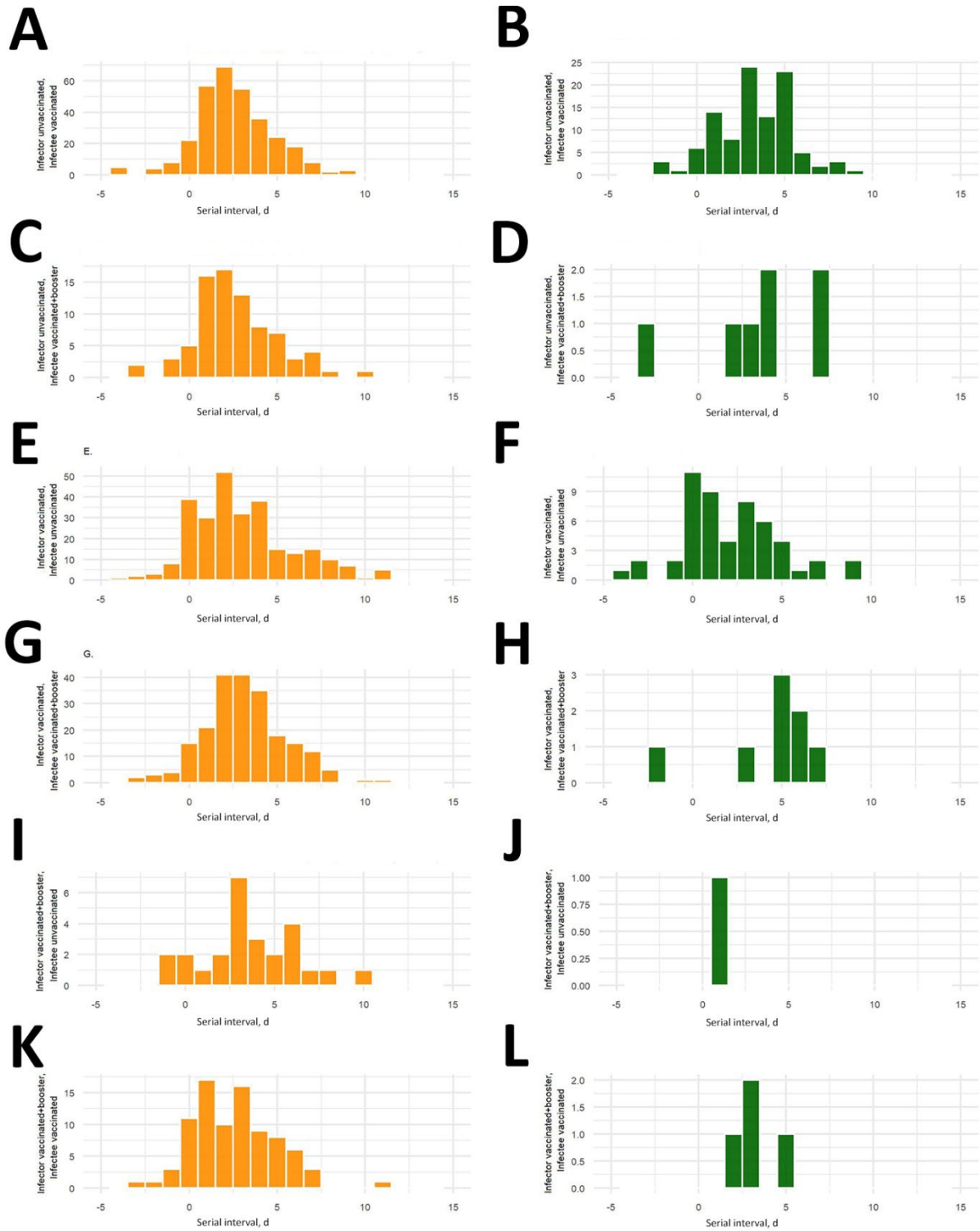
Vaccination status	Variant	Proportion of all pairs
Both unvaccinated	Omicron	0.16
	Delta	0.18
Both vaccinated without booster	Omicron	0.36
	Delta	0.29
Both unvaccinated plus booster	Omicron	0.02
	Delta	0.00



Appendix Figure 1. Proportion of all included (left) and total number (right) of transmission pairs linked to Omicron and Delta variant, by infector symptom onset date from 19 November to 31 December 2021.



Appendix Figure 2. Empirical (A-D) and fitted normal (E; solid = within-household, dashed = between-household) distribution of the serial intervals for Omicron and Delta variant, by household status (excluding 83 pairs for which no information on household status was available). Onset date infector from 19 November until 31 December 2021. There was a significant difference between the mean empirical serial interval of both variants within households, but not between households ($p = 0.034$ for within-household, and $p = 0.686$ for between-household transmission pairs).



Appendix Figure 3. Empirical distribution of the serial intervals for Omicron (A, C, E, G, I, K) and Delta (B, D, F, H, J, L) variant, by vaccination status of infector and infectee. Infector symptom onset from 19 November until 31 December 2021.