

# CDC & APHL Cooperative Agreement OE20-2001 Performance Summary

REPORTING PERIOD: JULY 2020 – JUNE 2021

## OE20-2001: Enhancing Public Health Laboratory Capabilities and Increasing Capacity

Building upon previous and currently funded Cooperative Agreements (CoAg) between CDC and the [Association of Public Health Laboratories \(APHL\)](#), [OE20-2001](#) aims to improve public health in the United States and globally, by enhancing the effectiveness and functionality of public health laboratories (PHLs) individually and as components of a national system. This CoAg supports four key strategies and activities that will enhance the capabilities and increase the capacities of PHLs in nine focus areas.

### 9 FOCUS AREAS

- A. Foundational Leadership and Support
- B. Environmental Health
- C. Foodborne, Waterborne, and Environmentally Transmitted Diseases
- D. Infectious Diseases
- E. Informatics
- F. Newborn Screening and Genetics
- G. Preparedness and Response
- H. Quality and Safety Systems
- I. Workforce Development



#### STRATEGY 1

Science, Management and Operations



#### STRATEGY 2

Policy, Partnership and Communications



#### STRATEGY 3

Training and Capacity Building



#### STRATEGY 4

Laboratory Quality, Safety, and Informatics

## SELECTED STRATEGIES AND ACTIVITIES

### POLICY, PARTNERSHIP AND COMMUNICATIONS



- Develop policy and issues analyses to promote public health laboratory interests.
- Facilitate information exchange and dissemination between laboratory professionals and other partners in public health, healthcare and beyond.
- Collect, analyze, create content and disseminate information to inform partners about the role of public health laboratories and the tools and resources available to them.

### TRAINING AND CAPACITY BUILDING



- Identify training and workforce development needs among laboratory professionals in diverse settings.
- Develop curriculum frameworks and training and workforce development resources for laboratory professionals in diverse settings.
- Design and implement programs to strengthen the public health laboratory workforce pipeline.

### LABORATORY QUALITY, SAFETY, AND INFORMATICS



- Develop and implement solutions and standards to improve data exchange and interoperability.
- Improve the practice of laboratory quality and safety in public health laboratories.
- Employ emerging methodologies and process improvements in public health laboratories.
- Provide technical assistance to public health laboratories and other partners.
- Identify and address gaps in laboratory preparedness and response to public health threats.

## ABOUT THE RECIPIENT: Association of Public Health Laboratories (APHL)



APHL works to strengthen laboratory systems serving the public's health in the United States and globally. Its members, known as "public health laboratories" or "PHLs," monitor, detect and respond to health threats. With over 20 years' experience in more than 30 countries, APHL is recognized internationally as a leader in laboratory science and practice.

# Focus Area A: Foundational Leadership and Support

## FOCUS AREA PERFORMANCE MEASURE HIGHLIGHTS JULY 2020 - JUNE 2021



Science, Management,  
and Operations

**22**

Number of needs assessment surveys that supported priorities within the nine focus areas of the CoAg

**98%**

Percent of respondents across 26 committees and subcommittees that agree that their deliverables addressed their annual priorities



Policy, Partnerships,  
and Communications

**895,473**

Number of impressions for evidence-based tools and resources shared on APHL social media platforms

**10**

Number of peer-reviewed publications in scientific journals for public health laboratory practice



Laboratory Quality, Safety,  
and Informatics

**25**

Number of formal data requests received, with 21 of those fulfilled based on APHL data sharing policy requirement

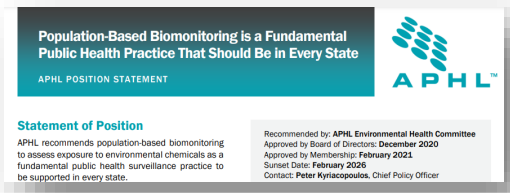
**99%**

Percent of 100 PHLs that provided test and equipment capability to respond to the pandemic

## SUCCESS STORIES AND LESSONS LEARNED

### Implementation Successes

- **Communications:** Published four issues of *Lab Matters* magazine garnering 22,500 page views; generated 816,111 page views of the APHL.org website; published 62 CoAg-funded publications, including technical publications, fact sheets and infographics.
- **Public Policy:** Met with data partners (CSTE, NAPHSS, HIMSS, ASTHO, NACCHO and Big Cities Health Coalition) regularly through the reporting period, which allowed for continuation of cohesive and timely responses to external organizations' (Congress, White House, federal agencies) interest in CDC's Data Modernization Initiative. These calls also continued to serve as a venue for partners to engage and learn from involved data organizations.
- **Quality Systems & Analytics (QSA):** Sponsored the 2021 APHL Annual Conference session: "Tomorrow's Public Health Laboratory Workforce: Generations Working Together" with 229 participants. 96.6% of the respondents agreed/strongly agreed the content addressed a gap in knowledge/skills.



[https://www.aphl.org/policy/Position\\_Documents/APHL-Biomonitoring-Position-Statement-February2021.pdf](https://www.aphl.org/policy/Position_Documents/APHL-Biomonitoring-Position-Statement-February2021.pdf)



<https://www.aphl.org/aboutAPHL/publications/lab-matters>

### Challenges

- APHL and member laboratories needed to focus resources on response to the pandemic.
- APHL did not have adequate staffing resources to report performance measures under the new centralized M&E and database system.

### Opportunities

- **Pandemic Prioritization/Adaption:** Completed key priorities and carried over ongoing activities to Year 2; hold meetings, trainings, conferences virtually when possible.
- **Streamline M&E Process:** Incorporated lessons learned from Year 1 to prioritize performance measures and reporting process for Year 2.
- **Increase Staff M&E Capacity:** Provided training and technical assistance on evaluation to program staff.

From APHL

Follow

