

---

*Draft*

**ADVISORY BOARD ON  
RADIATION AND WORKER HEALTH**

*National Institute for Occupational Safety and Health*

**SC&A'S EVALUATION OF Cs-137/Sr-90, FISSION AND  
ACTIVATION PRODUCT, AND ACTINIDE VALUES USING  
INL MONTHLY AND ANNUAL WASTE REPORTS  
IN RELATIONSHIP TO ASSIGNING INTAKES**

**Contract No. 211-2014-58081  
SCA-TR-2017-SEC001, Revision 0**

Prepared by

**Ron Buchanan, PhD, CHP**

SC&A, Inc.  
1608 Spring Hill Road, Suite 400  
Vienna, Virginia 22182

Saliant, Inc.  
5579 Catholic Church Road  
Jefferson, Maryland 21755

January 2017

---

***DISCLAIMER***

*This is a working document provided by the Centers for Disease Control and Prevention (CDC) technical support contractor, SC&A for use in discussions with the National Institute for Occupational Safety and Health (NIOSH) and the Advisory Board on Radiation and Worker Health (ABRWH), including its Working Groups or Subcommittees. Documents produced by SC&A, such as memorandum, white paper, draft or working documents are not final NIOSH or ABRWH products or positions, unless specifically marked as such. This document prepared by SC&A represents its preliminary evaluation on technical issues.*

**NOTICE:** *This report has been reviewed to identify and redact any information that is protected by the Privacy Act 5 U.S.C. § 552a and has been cleared for distribution.*

<b>Effective Date:</b> 01/11/2017	<b>Revision No.</b> 0 (Draft)	<b>Document No./Description:</b> SCA-TR-2017-SEC001	<b>Page No.</b> 2 of 39
--------------------------------------	----------------------------------	--	----------------------------

SC&A, INC.:

*Technical Support for the Advisory Board on Radiation & Worker Health Review of NIOSH Dose Reconstruction Program*

<b>DOCUMENT TITLE:</b>	SC&A's Evaluation of Cs-137/Sr-90, Fission and Activation Product, and Actinide Values Using INL <u>Monthly</u> and <u>Annual</u> Waste Reports in Relationship to Assigning Intakes
<b>DOCUMENT NUMBER/ DESCRIPTION:</b>	SCA-TR-2017-SEC001
<b>REVISION NO.:</b>	0
<b>SUPERSEDES:</b>	N/A
<b>EFFECTIVE DATE:</b>	January 11, 2017
<b>TASK MANAGER:</b>	John Stiver, MS, CHP [signature on file]
<b>PROJECT MANAGER:</b>	John Stiver, MS, CHP [signature on file]
<b>DOCUMENT REVIEWER(S):</b>	Joe Fitzgerald, John Stiver [signatures on file]

**Record of Revisions**

<b>Revision Number</b>	<b>Effective Date</b>	<b>Description of Revision</b>
0 (Draft)	01/11/2017	Initial issue

<b>Effective Date:</b> 01/11/2017	<b>Revision No.</b> 0 (Draft)	<b>Document No./Description:</b> SCA-TR-2017-SEC001	<b>Page No.</b> 3 of 39
--------------------------------------	----------------------------------	--	----------------------------

## TABLE OF CONTENTS

Abbreviations and Acronyms .....	4
Executive Summary .....	6
1.0 Introduction and Background .....	9
2.0 Cs-137/Sr-90 Values .....	10
3.0 FAP/Sr-90 Values .....	14
4.0 FAP Contribution to Internal Dose .....	19
5.0 Actinide/Sr-90 Values .....	20
6.0 Actinide Contribution to Internal Dose .....	25
7.0 Summary and Conclusions .....	26
8.0 References .....	28
Attachment A. Documents and Data Used to Evaluate Cs-137/Sr-90 Values .....	29
Attachment B. Documents and Data Used to Evaluate FAP/Sr-90 and FAP/Cs-137 Values .....	33
Attachment C. Documents and Data Used to Evaluate Actinide/Sr-90 and Actinide/Cs-137 Values .....	38

<b>Effective Date:</b> 01/11/2017	<b>Revision No.</b> 0 (Draft)	<b>Document No./Description:</b> SCA-TR-2017-SEC001	<b>Page No.</b> 4 of 39
--------------------------------------	----------------------------------	--	----------------------------

## ABBREVIATIONS AND ACRONYMS

ABRWH	Advisory Board on Radiation and Worker Health
Al	aluminum
Am	americium
ANP	Aircraft Nuclear Propulsion
ATR	Advance Test Reactor
Ce	cerium
CFA	Central Facility Area
Ci	curie
Co	cobalt
CPP	Chemical Processing Plant
Cs	cesium
D&D	decontamination and decommissioning
DR	dose reconstruction
D&D	decontamination and decommissioning
ER	evaluation report
ETR	Engineering Test Reactor
FAP	fission and activation product
I	iodine
INL	Idaho National Laboratory
La	lanthanum
Max	maximum
μCi	microcurie
uCi/ml	microcurie per milliliter
MTR	Materials Testing Reactor
Nb	niobium
NIOSH	National Institute for Occupational Safety and Health
NOCTS	NIOSH OCAS Claims Tracking System
NRTS	National Reactor Testing Station
ORAUT	Oak Ridge Associated Universities Team
OTIB	Occupational Technical Information Bulletin
POC	probability of causation

<b>Effective Date:</b> 01/11/2017	<b>Revision No.</b> 0 (Draft)	<b>Document No./Description:</b> SCA-TR-2017-SEC001	<b>Page No.</b> 5 of 39
--------------------------------------	----------------------------------	--	----------------------------

Pr	praseodymium
Pu	plutonium
RBM	red bone marrow
Ru	ruthenium
SEC	Special Exposure Cohort
Sr	strontium
SRDB	Site Research Database
TAN	Test Area North
TKBS	Site Technical Basis Document
TRA	Test Reactor Area
TSF	Technical Support Facility
U	uranium
Y	yttrium
Zr	zirconium

<b>Effective Date:</b> 01/11/2017	<b>Revision No.</b> 0 (Draft)	<b>Document No./Description:</b> SCA-TR-2017-SEC001	<b>Page No.</b> 6 of 39
--------------------------------------	----------------------------------	--	----------------------------

## EXECUTIVE SUMMARY

In the National Institute for Occupational Safety and Health's (NIOSH's) evaluation report (ER) for the Idaho National Laboratory (INL) Special Exposure Cohort (SEC) petition SEC-00219 of March 12, 2015 (NIOSH 2015), one of the major assumptions was that a bioassayed indicator radionuclide (strontium-90 [Sr-90] and/or cesium-137 [Cs-137]) can be used to assign dosimetric-significant fission and activation product (FAP) and actinide (alpha emitter) intakes using the ratio method. This method requires that radionuclide ratios remain fairly constant for the many processes and locations, and over most of the operating history of INL. However, SC&A found that apparently most of the radionuclide ratios recommended by NIOSH were generated by computer modeling, and that there was no indication that the computer-generated ratio values had been compared to ratio values derived from physical measurement.

In view of INL's many types of reactors, its experimental charter, and the various fuels and materials shipped in from other sites for processing, SC&A performed a preliminary analysis of some of the available INL bioassay, Brookhaven National Laboratory fuel, and swipe data in 2015 to obtain an indication of the validity of this assumption (SC&A 2015). As outlined in that report, SC&A found there were indications that the Cs-137/Sr-90 values were not always centered on unity. SC&A then searched for documentation of quantitative analyses of the fuel elements processed in the dissolver at the Idaho Chemical Processing Plant in order to determine the radionuclide components that workers may have been exposed to; however, such documentation has not been located to date. Therefore, SC&A searched the Site Research Database for other documents that could provide quantitative radionuclide data. During this search, SC&A located many INL waste reports that contained quantitative Cs-137 and Sr-90 measurements performed on the same samples (some also contained FAP and actinide analyses); these reports spanned a relatively long time period (1961–1998) for the major operational areas within INL. Quantitative radionuclide data for waste materials (air, liquid, and solid) at the INL facilities provide a good representation of the potential intake exposures to workers. Therefore, these data were analyzed in detail to evaluate if there is a reasonably consistent relationship between the Cs-137/Sr-90 concentrations, and if these indicating radionuclides could be used to assign other radionuclide intakes such as FAP for dose reconstruction (DR) purposes. In addition, quantitative actinide data in relationship to Sr-90 and Cs-137 were analyzed when available. Data for this report included both monthly and annual radionuclide concentrations. A former SC&A report analyzed mostly annual radionuclide concentrations (SC&A 2016).

### **Cs-137/Sr-90**

A total of 315 monthly and 77 annual matched pairs of measured Cs-137 and Sr-90 activities were located and analyzed, spanning the period 1961–1998 for a number of major facilities at the INL site. Of these matched data pairs, approximately 45% contained Cs-137/Sr-90 values centered on unity, within a factor of 2 (i.e., Cs-137/Sr-90 = 0.5 to 2.0) for both monthly and annual data pairs (there were no outstanding differences between monthly and annual pair ratios). The remaining Cs-137/Sr-90 values were outside this interval, with values ranging from 0.03 to 159. Similar results were obtained for Sr-90/Cs-137 values, with the ratio values being the inverse of the Cs-137/Sr-90 ratio values. Cs-137 activities were generally slightly greater than Sr-90 activities.

<b>Effective Date:</b> 01/11/2017	<b>Revision No.</b> 0 (Draft)	<b>Document No./Description:</b> SCA-TR-2017-SEC001	<b>Page No.</b> 7 of 39
--------------------------------------	----------------------------------	--	----------------------------

### **Fission and Activation Product Ratios**

A total of 280 monthly and 103 annual matched pairs of measured Sr-90 and FAP (cerium-144 [Ce-144], cobalt-60 [Co-60], and ruthenium-106 [Ru-106]) activity were located and analyzed, spanning the period 1961–1995 for various facilities at the INL site. The measured FAP/Sr values were compared to the FAP/Sr values recommended in Table 7-3a (with a one-year decay time) of ORAUT-OTIB-0054, *Fission and Activation Product Assignment for Internal Dose-Related Gross Beta and Gross Gamma Analyses*, Revision 03, dated February 6, 2015. A comparison ratio value centered on 1.0 would indicate agreement between the measured and recommended values; however, ratio values not centered on unity would indicate insufficient or excessive FAP intake assignments during DR. Of these matched pairs, measured Ce-144/Sr-90 values generally fell below the recommended ratio of 12.5, measured Co-60/Sr-90 values almost always were greater than the recommended value of 1.8E-4, and measured Ru-106/Sr-90 values tended to be at or below the recommended ratio of approximately 1.0 (there were no outstanding differences between monthly and annual pair ratios for these FAPs). Similar results were obtained using FAP/Cs-137 data.

### **Actinide Ratios**

A total of 56 monthly and 13 annual matched pairs of measured Sr-90 and an actinide (americium-241 [Am-241], plutonium-238 [Pu-238], and uranium-234 [U-234]) activity were located and analyzed, spanning the period 1974–1993 for various facilities at the INL site. The measured actinide/Sr values were compared to the actinide/Sr values recommended in Table 5-22 of ORAUT-TKBS-0007-5, *Idaho National Laboratory and Argonne National Laboratory – West – Occupational Internal Dose*, Revision 03, dated March 2, 2010. A comparison ratio value centered on 1.0 would indicate agreement between the measured and recommended values; however, ratio values not centered on unity would indicate insufficient or excessive actinide intake assignments during DR. Of these matched pairs, most of the measured actinide-to-Sr-90 ratios were greater, and a few were less, than the recommended value, with considerable scatter and relatively few values falling within the 0.5 to 2.0 ratio range. The measured Pu-238 (the most significant radionuclide for internal actinide doses)-to-Sr-90 ratio had the most recorded data points, compared to the other actinides, but with ratio values that had considerable scatter and fairly poor statistical correlation. Similar results were obtained using actinide/Cs-137 data.

### **Conclusions**

These results indicate that at INL, the Cs-137/Sr-90 values may not be centered on unity as indicated in ORAUT-OTIB-0054, Revision 03, and some FAP/Sr and FAP/Cs measured values may be greater or less than recommended for assigning FAP intakes. Also, actinide/Sr or actinide/Cs values may not be sufficiently constant (or known) as required by ORAUT-TKBS-0007-5 (Tables 5-22 and 5-23) for assigning actinide intakes, even in situations where it can be assumed that the actinides are tied to an indicating radionuclide, such as Sr-90 or Cs-137. Therefore, SC&A finds:

1. Cs-137/Sr-90 values are not sufficiently constant to assume a ratio of unity. Using the results of Cs-137 bioassays versus Sr-90 bioassays may lead to differences in FAP intake assignments for the radionuclides listed in Table 7-3 of ORAUT-OTIB-0054, Revision 03, for DR.

<b>Effective Date:</b> 01/11/2017	<b>Revision No.</b> 0 (Draft)	<b>Document No./Description:</b> SCA-TR-2017-SEC001	<b>Page No.</b> 8 of 39
--------------------------------------	----------------------------------	--	----------------------------

2. Measured Ce-144/Sr-90 or Ce-144/Cs-137 values indicate that the recommended values in Table 7-3 of ORAUT-OTIB-0054, Revision 03, are reasonable for DR purposes.
3. Measured Co-60/Sr-90 or Co-60/Cs-137 values are not in agreement with the recommended values in Table 7-3 of ORAUT-OTIB-0054, Revision 03. Using the recommended ratio values would usually lead to significant underestimation of Co-60 intake for the waste materials analyzed in this report.
4. Measured Ru-106/Sr-90 or Ru-106/Cs-137 values indicate that the recommended values in Table 7-3 of ORAUT-OTIB-0054, Revision 03, are generally reasonable for DR purposes, but there was noticeable scatter in the measured ratio values.
5. Measured FAP ratio values could only be obtained for relatively long-lived radionuclides (Cs-137, Sr-90, Ce-144, Co-60, and Ru-106). Therefore, the actual ratio values for the short-lived FAPs in Table 7-3 of ORAUT-OTIB-0054, Revision 03, are not known at this time for the material analyzed.
6. Measured actinide/Sr-90 or actinide/Cs-137 values are difficult to obtain because FAPs are generally not analyzed when actinide samples are taken. The relatively few data pairs obtained for this study indicate that for the three most dose-contributing radionuclides (Pu-238, Am-241, and U-234), the measured actinide/Sr-90 or actinide/Cs-137 values were generally greater than the recommended values in Tables 5-22 and 5-23 of ORAUT-TKBS-007-5, Revision 03, some by a significant amount.



<b>Effective Date:</b> 01/11/2017	<b>Revision No.</b> 0 (Draft)	<b>Document No./Description:</b> SCA-TR-2017-SEC001	<b>Page No.</b> 9 of 39
--------------------------------------	----------------------------------	--	----------------------------

## 1.0 INTRODUCTION AND BACKGROUND

The National Institute for Occupational Safety and Health (NIOSH) responded to the Idaho National Laboratory (INL) Special Exposure Cohort (SEC)-00219 in an evaluation report (ER) of March 12, 2015 (NIOSH 2015). In that ER, and also in the technical basis document for INL, ORAUT-TKBS-0007-5, Revision 03, *Idaho National Laboratory and Argonne National Laboratory – Occupational Internal Dose*, issued March 2010, NIOSH’s basis for assigning internal intakes/doses for most years and locations at INL (except those actinides covered by NIOSH’s proposed SEC class and the reserved areas and dates) relies on the important assumption that the cesium-137/strontium-90 (Cs-137/Sr-90) values are approximately unity, that fission activation products (FAPs) are directly tied by a known ratio to Sr-90 or Cs-137 (as per ORAUT-OTIB-0054, *Fission and Activation Product Assignment for Internal Dose-Related Gross Beta and Gross Gamma Analyses* [also referred to as “OTIB-0054”]<sup>1</sup>), and that actinides are directly tied by a known ratio to Sr-90 or Cs-137 (as per Tables 5-22 and 5-23 of ORAUT-TKBS-0007-5, Revision 03). However, SC&A found that apparently most of the radionuclide ratios recommended by NIOSH were generated by computer modeling, and that there was no indication that the computer-generated ratio values had been compared to ratio values derived from physical measurement.

In a previous evaluation using a relatively small sampling of bioassay and swipe data (SC&A 2015), SC&A found indications that the measured Cs-137/Sr-90 values were not always centered on unity, and that the measured FAP/Sr, FAP/Cs, actinide/Sr, and actinide/Cs values were not constant or necessarily representative of those recommended in ORAUT-TKBS-0007-5, Revision 03. Therefore, SC&A searched for further documentation of measured quantitative radionuclide analyses of Sr-90, Cs-137, FAP, and actinide activities. Searches for documentation of quantitative analyses of the fuel elements processed in the dissolver at the Idaho Chemical Processing Plant have not produced significant data to date.

In the process of searching the Site Research Database (SRDB), SC&A located INL waste management reports that contained quantitative Sr-90 and Cs-137 measurements performed on the same samples (some also contained FAP and actinide data). These reports span a relatively long time period (1961–1998) and cover a number of the major operational areas within INL. These data provide a good representation of the materials workers could have been exposed to, and the potential intake mixtures. SC&A analyzed annual and one-of-a-kind (i.e., point sample) radionuclide pairs in a report issued in June 2016 (SC&A 2016). In response to Work Group tasking at the joint INL/Argonne National Laboratory-West meeting held in August 2016, SC&A prepared this latest report. In this report, SC&A analyzed both monthly and corresponding annual data pairs to determine if the measured-to-recommended ratio values were useful for dose reconstruction (DR) purposes, and to determine if there is any difference in resulting ratios using monthly versus annual activity data. A list of the documents that contained useful radionuclide measures and some of the recorded data that were used in this evaluation are provided in this

---

<sup>1</sup> For this analysis, SC&A used ORAUT-OTIB-0054, Revision 03 of February 6, 2015. For Cases A and D, NIOSH used ORAUT-OTIB-0054, Revision 00 PC-1 of November 19, 2007; for Case B, NIOSH used Revision 02 of March 6, 2014; and for Case C, NIOSH used Revision 03 of February 6, 2015.

<b>Effective Date:</b> 01/11/2017	<b>Revision No.</b> 0 (Draft)	<b>Document No./Description:</b> SCA-TR-2017-SEC001	<b>Page No.</b> 10 of 39
--------------------------------------	----------------------------------	--	-----------------------------

report as Attachment A (for Cs-137 and Sr-90), Attachment B (for FAP), and Attachment C (for actinide). Analyses of these data are provided in the following sections.

## 2.0 Cs-137/Sr-90 VALUES

NIOSH's ER and ORAUT-TKBS-0007-5, Revision 03, rely heavily on the use of ORAUT-OTIB-0054<sup>2</sup> to assign FAP intakes using Sr-90 or Cs-137 as the indicating radionuclide for many other FAP radionuclides at INL for most locations and time periods. An example of Table 7-3a from ORAUT-OTIB-0054, Revision 03, is provided here as Figure 1. As can be seen from this table, assignment of FAP intakes is dependent on the Cs-137/Sr-90 value being approximately 1.0.

**Figure 1. Table 7-3a, FAP-to-Sr-90 or -Cs-137 Ratios for ATR-1 (ORAUT-OTIB-0054)**

Table 7-3 values: ATR 1									
Nuclide	Intake relative to Sr-90				Nuclide	Intake relative to Cs-137			
	10 d	40 d	180 d	1 y		10 d	40 d	180 d	1 y
Co-60	2.05E-04	2.03E-04	1.95E-04	1.85E-04	Co-60	2.03E-04	2.01E-04	1.93E-04	1.83E-04
Sr-89	6.72E+01	4.46E+01	6.61E+00	5.29E-01	Sr-89	6.66E+01	4.42E+01	6.54E+00	5.24E-01
<b>Sr-90</b>	<b>1.00E+00</b>	<b>1.00E+00</b>	<b>1.00E+00</b>	<b>1.00E+00</b>	Sr-90	9.90E-01	9.90E-01	9.89E-01	9.89E-01
Y-90	1.00E+00	1.00E+00	1.00E+00	1.00E+00	Y-90	9.93E-01	9.90E-01	9.90E-01	9.89E-01
Y-91	8.04E+01	5.64E+01	1.09E+01	1.23E+00	Y-91	7.96E+01	5.59E+01	1.07E+01	1.21E+00
Zr-95	8.67E+01	6.28E+01	1.39E+01	1.90E+00	Zr-95	8.59E+01	6.22E+01	1.38E+01	1.88E+00
Nb-95	7.49E+01	7.41E+01	2.66E+01	4.08E+00	Nb-95	7.42E+01	7.34E+01	2.63E+01	4.04E+00
Ru-103	4.50E+01	2.65E+01	2.26E+00	8.73E-02	Ru-103	4.45E+01	2.63E+01	2.24E+00	8.64E-02
Ru-106	1.74E+00	1.65E+00	1.28E+00	9.17E-01	Ru-106	1.72E+00	1.63E+00	1.27E+00	9.07E-01
I-131	1.21E+03	9.13E+01	5.29E-04	6.33E-11	I-131	1.20E+03	9.05E+01	5.23E-04	6.26E-11
Cs-134	7.48E-01	7.29E-01	6.47E-01	5.52E-01	Cs-134	7.41E-01	7.22E-01	6.40E-01	5.46E-01
Cs-137	1.01E+00	1.01E+00	1.01E+00	1.01E+00	<b>Cs-137</b>	<b>1.00E+00</b>	<b>1.00E+00</b>	<b>1.00E+00</b>	<b>1.00E+00</b>
Ce-141	8.62E+01	4.55E+01	2.32E+00	4.54E-02	Ce-141	8.54E+01	4.51E+01	2.30E+00	4.49E-02
Ce-144	2.89E+01	2.69E+01	1.93E+01	1.25E+01	Ce-144	2.86E+01	2.66E+01	1.91E+01	1.23E+01
Pr-143	7.60E+01	1.65E+01	1.30E-02	1.04E-06	Pr-143	7.52E+01	1.63E+01	1.29E-02	1.03E-06
Pm-147	2.81E+00	2.96E+00	2.74E+00	2.42E+00	Pm-147	2.78E+00	2.94E+00	2.71E+00	2.40E+00
Eu-154	2.36E-02	2.35E-02	2.30E-02	2.23E-02	Eu-154	2.34E-02	2.32E-02	2.27E-02	2.21E-02

SC&A located a total of 315 monthly and 77 annual matched pairs of measured Cs-137 and Sr-90 activity in the INL waste reports, spanning the period 1961–1998 for the INL site. SC&A analyzed these data to determine the Cs-137/Sr-90 values for each matched pair for the INL site. Only recorded and paired data points specifically listing Cs-137 and Sr-90 in units of activity (microcurie [ $\mu$ Ci], curie [Ci], etc.) on the same material were used in these analyses; this included air, liquid, and solid waste. Figures 2 and 3 contain the results for the 315 monthly (represented by orange squares) and 77 annual (represented by blue diamonds) INL data pairs analyzed.

<sup>2</sup> NIOSH's ER cites ORAUT-OTIB-0054, Revision 02 of March 6, 2014. ORAUT-TKBS-0007-5 cites ORAUT-OTIB-0054, Revision 00 PC-1 of November 19, 2007.

Figure 2. Cs-137/Sr-90 Values for Monthly and Annual Data Pairs from INL Waste Reports

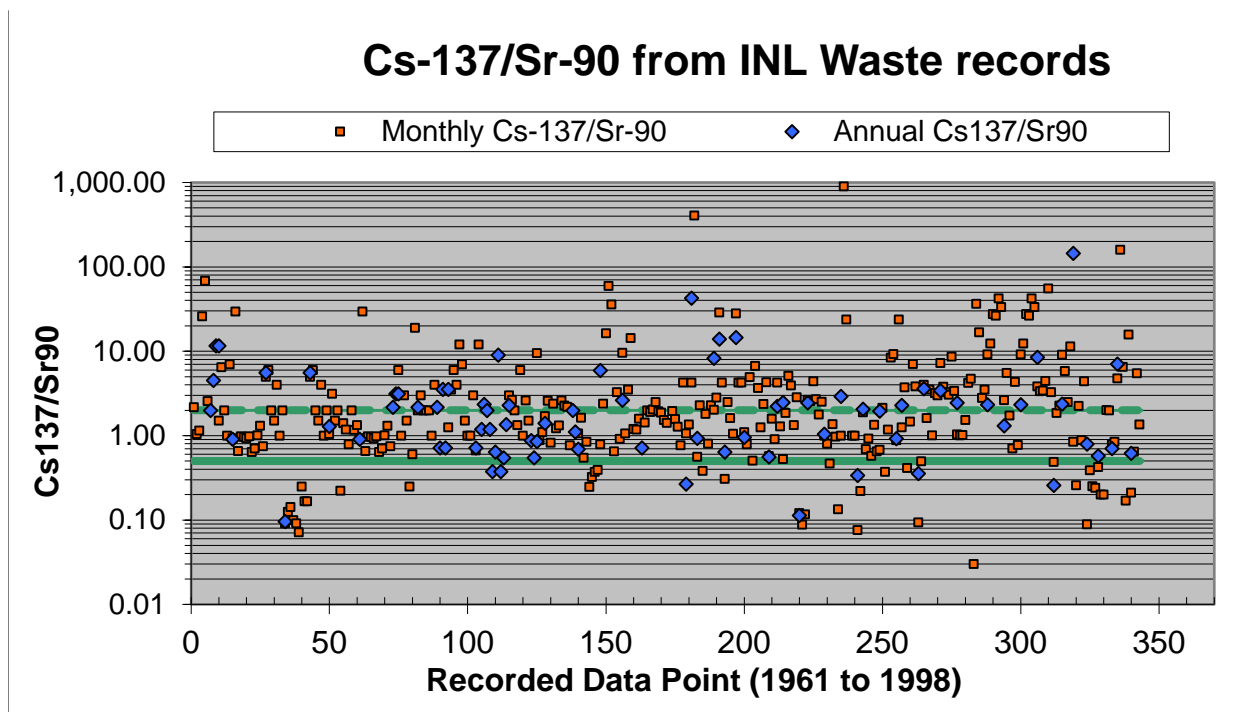
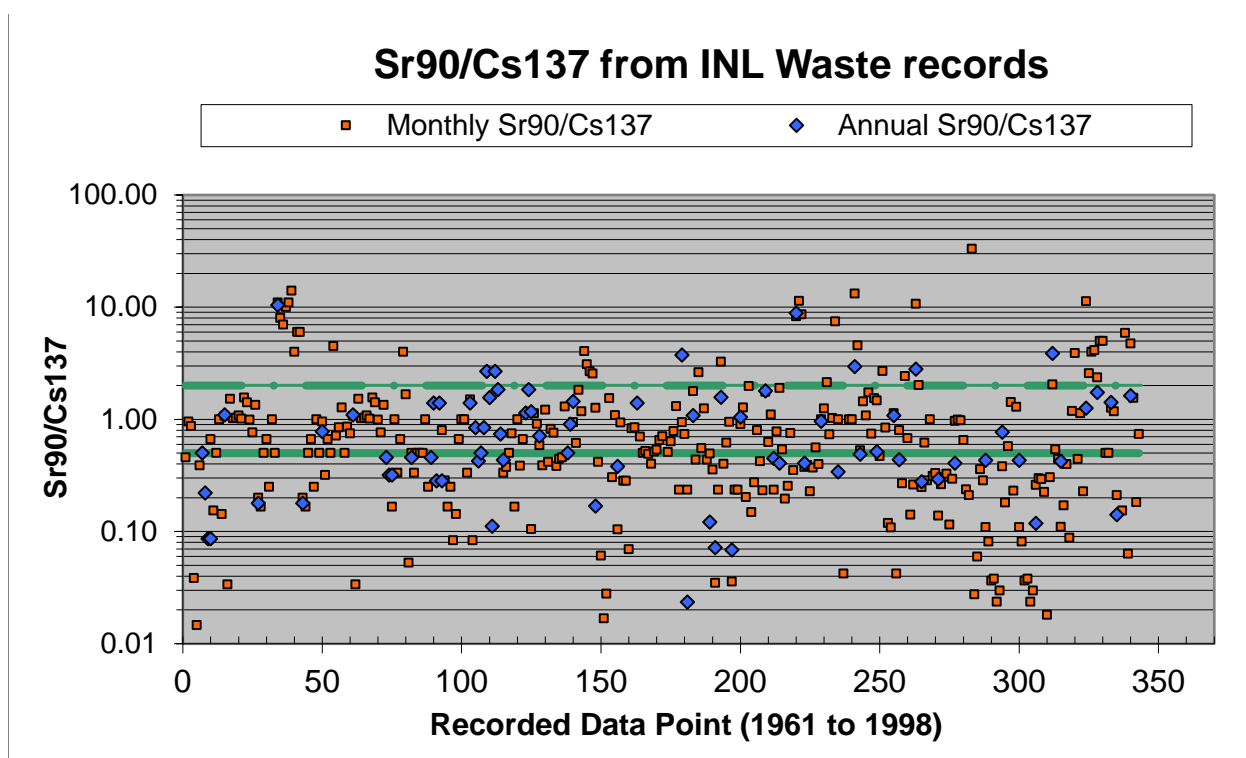


Figure 3. Sr-90/Cs-137 Values for Monthly and Annual Data Pairs from INL Waste Reports



Of the 315 monthly pairs, 45.7% contained Cs-137/Sr-90 or Sr-90/Cs-137 values centered on unity, within a factor of 2 (i.e., ratio = 0.5 to 2.0) of the recommended values; these are

<b>Effective Date:</b> 01/11/2017	<b>Revision No.</b> 0 (Draft)	<b>Document No./Description:</b> SCA-TR-2017-SEC001	<b>Page No.</b> 12 of 39
--------------------------------------	----------------------------------	--	-----------------------------

represented by the data points between the solid and dashed thick green horizontal lines in Figures 2 and 3, and 59.7% falling within a factor of 3 (i.e., 0.33 to 3.0). The remaining ratio values were outside these intervals with values ranging from 0.03 to 159. Table 1 summarizes the distribution of the ratios that fell below, within, and above the recommended ratio by a factor of 2 (i.e., 0.5 to 2.0), and the corresponding data for a factor of 3 (i.e., 0.33 to 3.0) for both the monthly and annual data.

**Table 1. Summary of Measured Cs-137/Sr-90 and Sr-90/Cs-137 Values Compared to Ratio Values Recommended in Table 7-3a of ORAUT-OTIB-0054**

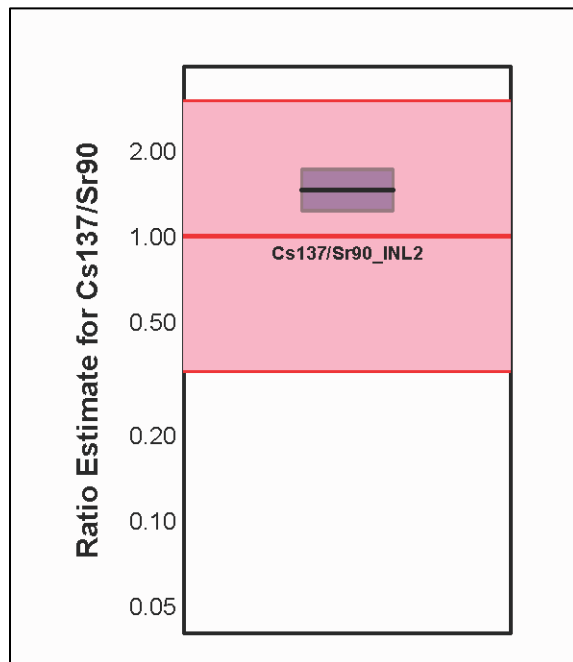
Radionuclides	Recommended NIOSH Ratio (OTIB-0054, Table 7-3a, at 1 year)	Number of Pairs	Type of Data	Percent of Pairs with Ratios <0.5	Percent of Pairs with Ratios 0.5–2.0	Percent of Pairs with Ratios >2.0	Percent of Pairs with Ratios <0.33	Percent of Pairs with Ratios 0.33–3.0	Percent of Pairs with Ratios >3.0
Cs-137/Sr-90	1	315	Monthly	12.7%	45.7%	41.6%	9.5%	59.7%	30.8%
Cs-137/Sr-90	1	77	Annual	10.4%	44.2%	45.5%	5.2%	68.8%	26.0%
Sr-90/Cs-137	1	315	Monthly	41.6%	45.7%	12.7%	30.8%	59.7%	9.5%
Sr-90/Cs-137	1	77	Annual	45.5%	44.2%	10.4%	26.0%	68.8%	5.2%

As can be seen from Table 1, there were no outstanding differences using monthly data as compared to using annual data to derive the Cs/Sr and Sr/Cs ratio values in these analyses. Also, the ratio values derived using monthly and annual activity data pairs in these analyses were similar to those obtained using only annual data in the June 2016 report (SC&A 2016), where 251 data pairs resulted in 33% of the ratio values falling in the 0.5 to 2.0 interval. The results obtained in these analyses, those contained in SC&A’s June 2016 report (SC&A 2016), and those contained in SC&A’s November 2015 report (SC&A 2015) were similar.

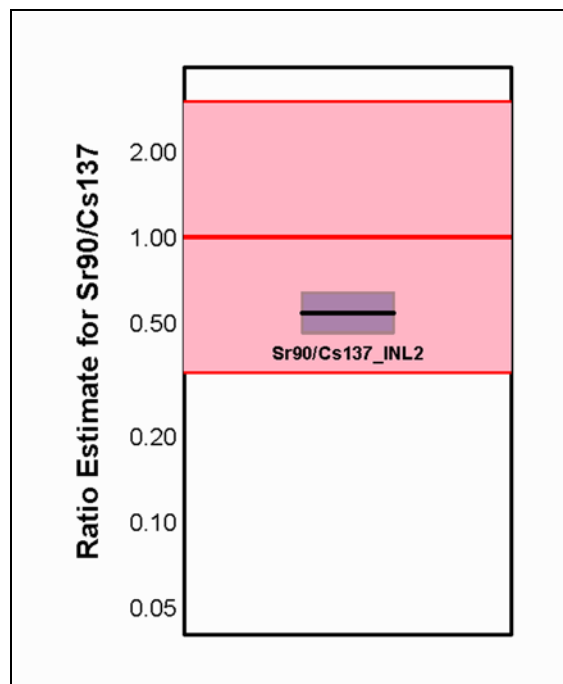
Figures 4 and 5 show the ratio values derived from the measured monthly and annual data compared to NIOSH’s recommended ratios. The black bar inside the smaller shaded rectangle (gray) represents a central estimate of the value of the ratio from measured pairs (with the smaller shaded rectangle representing the 95% confidence interval<sup>3</sup> of the central estimate of the value of the ratio from measured pairs). The center horizontal red line inside the larger shaded rectangle (pink) represents the NIOSH-recommended ratio value of approximately 1.0. The larger shaded rectangle represents the recommended ratio value,  $\pm$  a factor of 3.

<sup>3</sup> The smaller shaded rectangle (gray) represents the 95% confidence interval of the center estimate of the ratio value derived from statistical analyses, which is different from the 95% confidence level of the original data in the data pairs.

**Figure 4. Comparison of Cs-137/Sr-90 Ratio of 1.0 Recommended by NIOSH with the Central Estimated Ratio and Its Confidence Interval from Measured Pairs**



**Figure 5. Comparison of Sr-90/Cs-137 Ratio Recommended by NIOSH with the Central Estimated Ratio and Its Confidence Interval from Measured Pairs**



Although Figures 4 and 5 indicate that the central estimate of the ratio from measured pairs for Cs-137/Sr-90 and Sr-90/Cs-137 and its associated 95% confidence intervals generally fall within

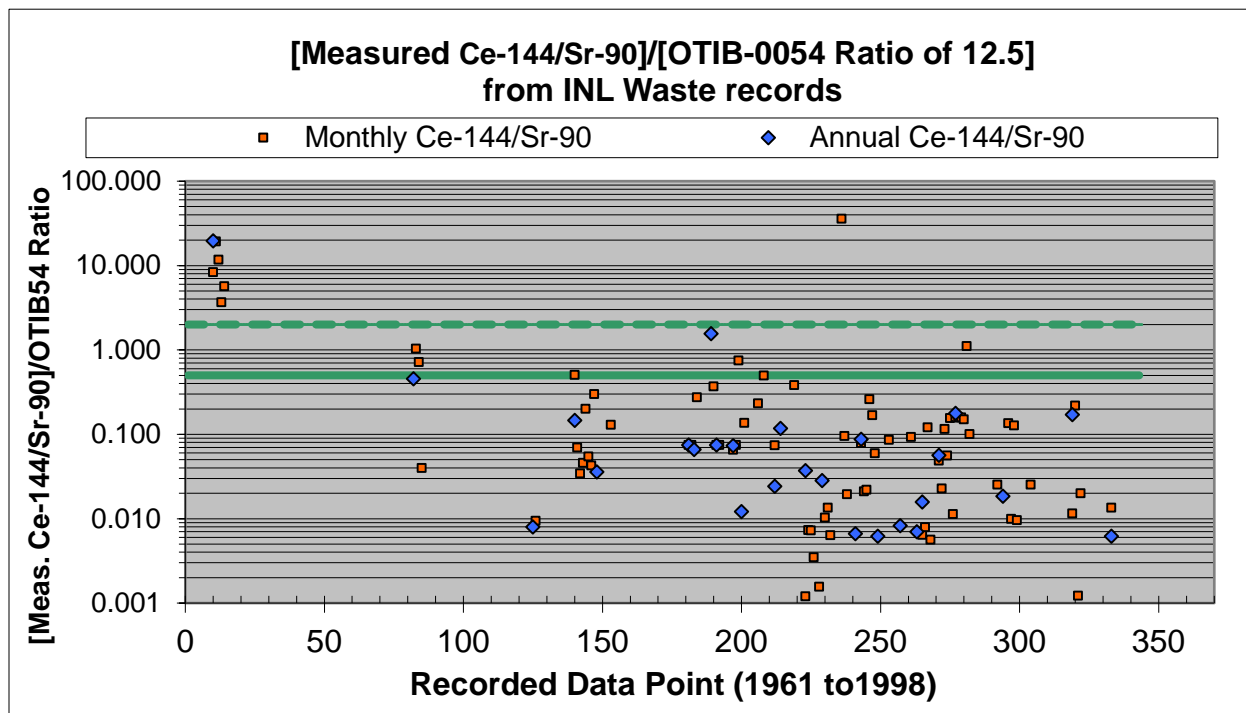
<b>Effective Date:</b> 01/11/2017	<b>Revision No.</b> 0 (Draft)	<b>Document No./Description:</b> SCA-TR-2017-SEC001	<b>Page No.</b> 14 of 39
--------------------------------------	----------------------------------	--	-----------------------------

a factor of 3, there was considerable scatter of the ratio values over a wide range, as shown in Figures 2 and 3.

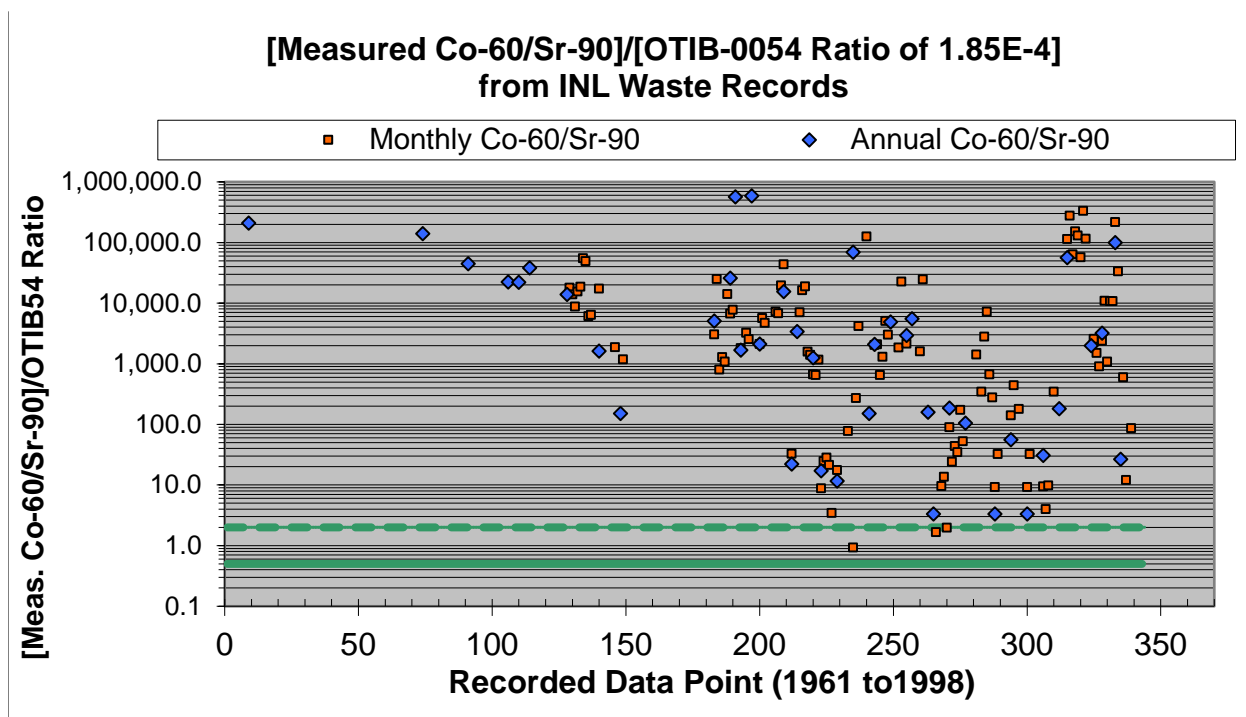
### 3.0 FAP/Sr-90 VALUES

Although a large number of radionuclides are listed in Table 7-3 of ORAUT-OTIB-0054, Revision 03, many have relatively short half-lives (compared to the time from when the radionuclide was created until the time the waste sample was analyzed); therefore, when analyzing the INL waste reports, only those with relatively long half-lives (equal to or greater than approximately 1 year) were selected for analysis. A total of 280 monthly and 103 annual matched pairs of measured Sr-90 and FAP (cerium-144 [Ce-144], cobalt-60 [Co-60], and ruthenium-106 [Ru-106]) activities were located and analyzed, spanning the period 1961–1995 for various facilities at the INL site. The measured FAP/Sr values were compared to the FAP/Sr values recommended in Table 7-3a (with a one-year decay time) of ORAUT-OTIB-0054, Revision 03. A comparison ratio value centered on 1.0 would indicate agreement between the measured and recommended values; however, ratio values not centered on unity would indicate insufficient or excessive FAP intake assignments during DR. Figures 6 through 8 contain the results for the 280 monthly (represented by orange squares) and 103 annual (represented by blue diamonds) FAP INL data pairs analyzed.

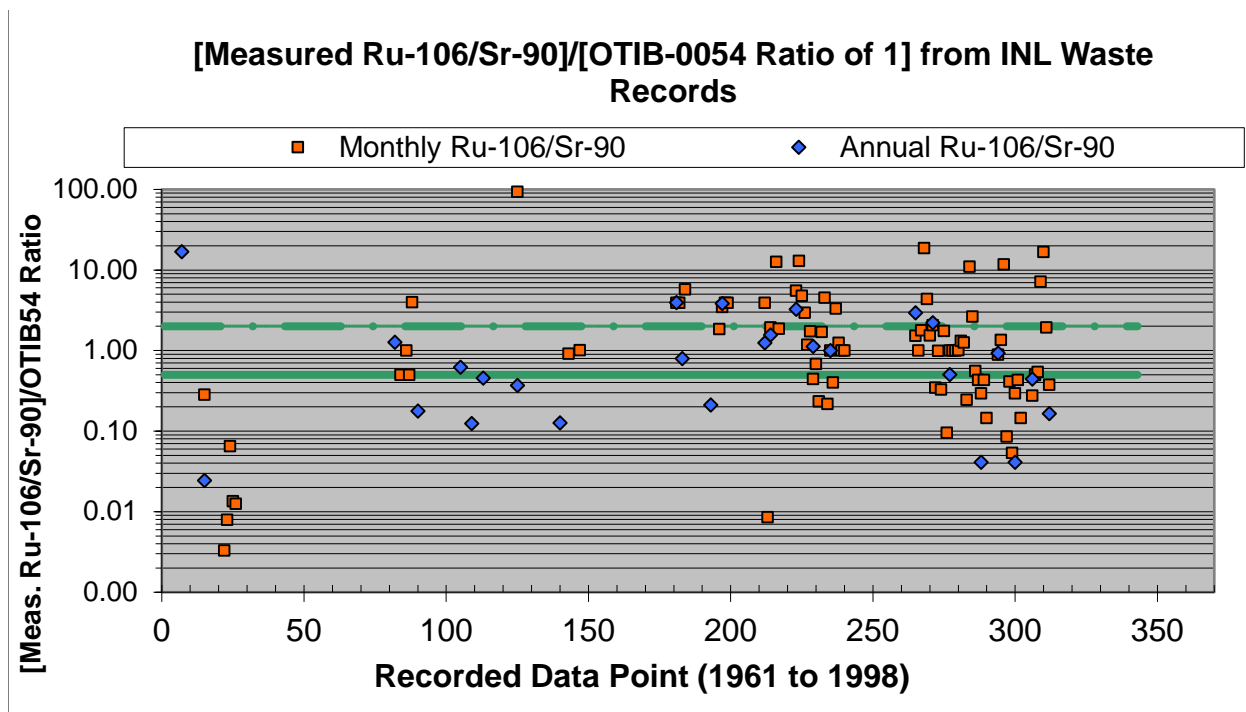
**Figure 6. Ce-144/Sr-90 Values for Monthly and Annual Data Pairs from INL Waste Reports**



**Figure 7. Co-60/Sr-90 Values for Monthly and Annual Data Pairs from INL Waste Reports**



**Figure 8. Ru-106/Sr-90 Values for Monthly and Annual Data Pairs from INL Waste Reports**



Of the 280 monthly and 103 annual data pairs, some fell within a factor of 2 (i.e., ratio = 0.5 to 2.0) of the recommended value; these are represented by the data points between the solid and dashed thick green horizontal lines in Figures 6 through 8. The remaining ratio values were

outside this interval. Table 2 summarizes the distribution of the ratios that fell below, within, and above the recommended ratio by a factor of 2 (i.e., 0.5 to 2.0), and the corresponding data for a factor of 3 (i.e., 0.33 to 3.0).

**Table 2. Summary of Measured FAP/Sr-90 and FAP/Cs-137 Values Compared to Ratio Values Recommended in Table 7-3a of ORAUT-OTIB-0054**

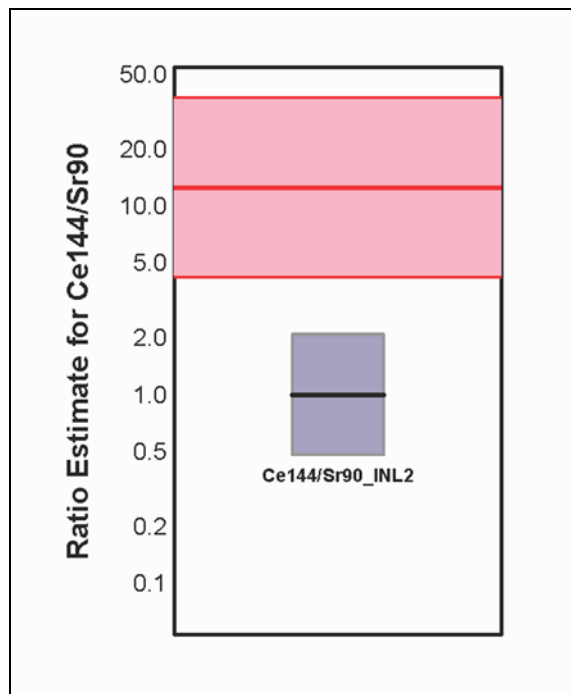
Radionuclides	Recommended NIOSH Ratio (OTIB-0054, Table 7-3a, at 1 year)	Number of Pairs	Type of Data	Percent of Pairs with Ratios <0.5	Percent of pairs with ratios 0.5–2.0	Percent of Pairs with Ratios >2.0	Percent of Pairs with Ratios <0.33	Percent of Pairs with Ratios 0.33–3.0	Percent of Pairs with Ratios >3.0
Ce-144/Sr-90	12.5	81	Monthly	85.2%	7.4%	7.4%	82.7%	9.9%	7.4%
Ce-144/Sr-90	12.5	30	Annual	93.3%	3.3%	3.3%	90.0%	6.7%	3.3%
Ce-144/Cs-137	12.3	81	Monthly	90.1%	4.9%	4.9%	85.2%	9.9%	4.9%
Ce-144/Cs-137	12.3	30	Annual	96.7%	3.3%	0.0%	96.7%	3.3%	0.0%
Co-60/Sr-90	1.85E-04	114	Monthly	0.0%	2.6%	97.4%	0.0%	2.6%	97.4%
Co-60/Sr-90	1.85E-04	48	Annual	0.0%	0.0%	100.0%	0.0%	0.0%	100.0%
Co-60/Cs-137	1.83E-04	114	Monthly	0.9%	7.0%	92.1%	0.9%	10.5%	88.6%
Co-60/Cs-137	1.83E-04	48	Annual	0.0%	6.3%	93.8%	0.0%	6.3%	93.8%
Ru-106/Sr-90	1	85	Monthly	32.9%	38.8%	28.2%	22.4%	52.9%	24.7%
Ru-106/Sr-90	1	25	Annual	44.0%	36.0%	20.0%	32.0%	56.0%	12.0%
Ru-106/Cs-137	1	85	Monthly	50.6%	36.5%	12.9%	45.9%	45.9%	8.2%
Ru-106/Cs-137	1	25	Annual	52.0%	48.0%	0.0%	40.0%	60.0%	0.0%

As can be seen from Table 2, there were no outstanding differences using monthly data as compared to using annual data to derive the FAP/Sr and FAP/Cs ratio values in these analyses. Measured Ce-144/Sr-90 values generally fell below the recommended ratio of 12.3, measured Co-60/Sr-90 values were almost always greater than the recommended value of 1.8E-4, and measured Ru-106/Sr-90 values tended to be near or below the recommended ratio of 1.0. Similar results were obtained for FAP/Cs-137 values.

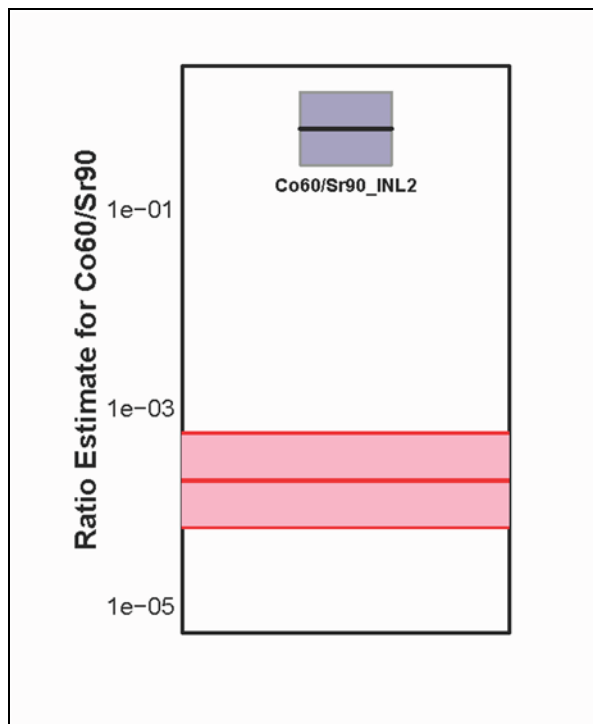
Figures 9 through 11 show the ratio values derived from the measured monthly and annual data compared to NIOSH's recommended ratios. The black bar inside the smaller shaded rectangle (gray) represents a central estimate of the value of the ratio from measured pairs (with the smaller shaded rectangle representing the 95% confidence interval of the central estimate of the value of the ratio from measured pairs). The center horizontal red line inside the larger shaded rectangle (pink) represents the NIOSH-recommended ratio value. The larger shaded rectangle represents the recommended ratio value,  $\pm$  a factor of 3.



**Figure 9. Comparison of Ce-144/Sr-90 Ratio of 12.5 Recommended by NIOSH with the Central Estimated Ratio and Its Confidence Interval from Measured Pairs**



**Figure 10. Comparison of Co-60/Sr-90 Ratio of 1.8E-4 Recommended by NIOSH with the Central Estimated Ratio and Its Confidence Interval from Measured Pairs**



**Figure 11. Comparison of Ru-106/Sr-90 Ratio of Approximately 1.0 Recommended by NIOSH with the Central Estimated Ratio and Its Confidence Interval from Measured Pairs**

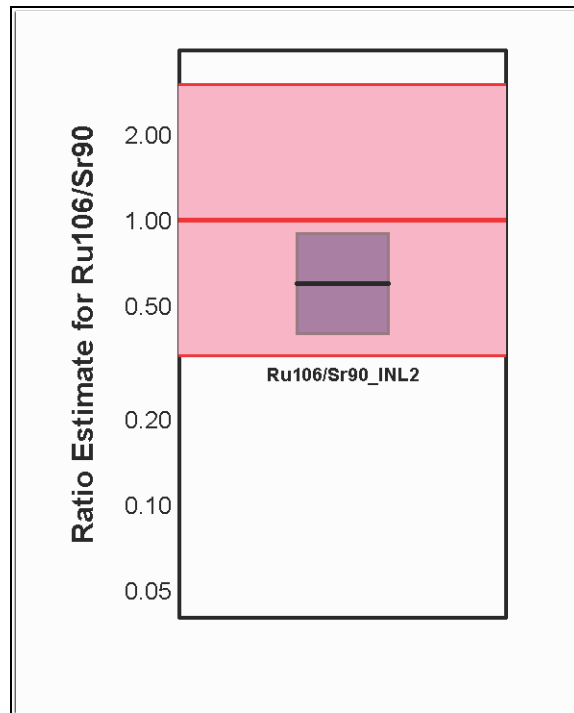


Figure 9 illustrates that the measured center estimated Ce-144/Sr-90 value, as well as the 95% confidence level area, fell below the recommended Ce-144/Sr-90 value (with a central estimate of the ratio from measured pairs of 1.0 compared to a recommended ratio of 12.5), with some scatter as shown in Figure 6.

Figure 10 illustrates that the measured center estimated Co-60/Sr-90 value, as wells as the entire 95% confidence level area, were well above the recommended Co-60/Sr-90 value (with a central estimate of the ratio from measured pairs of 0.64 compared to a recommended ratio of 1.8E-4), with considerable scatter as shown in Figure 7.

Figure 11 illustrates that the measured center estimated Ru-106/Sr-90 value, as well as the 95% confidence level area, fell slightly below the recommended value (with a central estimate of the ratio from measured pairs of 0.6 compared to a recommended ratio of approximately 1.0), with some scatter as shown in Figure 8.

Similar results were obtained for FAP/Cs-137 values.

## 4.0 FAP CONTRIBUTION TO INTERNAL DOSE

To determine the impact that FAP intake values and the resulting doses have on the total internal dose assignments, SC&A analyzed the FAP doses in four DR cases (A, B, C, and D<sup>4</sup>) obtained from the NIOSH OCAS Claims Tracking System (NOCTS). These cases were selected because they each had both FAP intakes assigned using ORAUT-OTIB-0054<sup>5</sup> and actinide intakes assigned using ORAUT-TKBS-0007-5, Revision 03, Tables 5-22 and 5-23, and included major organs of interest. Table 3 summarizes this analysis.

**Table 3. Summary of FAP Dose versus Total Internal Dose**

Case	Indicating Radionuclide	Organ	Total Internal Dose Assigned (rem)	OTIB-0054 FAP Organ Dose (rem)	FAP % of Total Internal Dose (rem)
A	Cs-137	RBM	1.710	1.053	61.1%
B	Cs-137	RBM	1.182	1.063	89.9%
B	Cs-137	Lung	9.842	8.748	88.9%
C	Sr-90 & Cs-137	Lung	21.006	19.536	93.0%
C	Sr-90 & Cs-137	Testes	0.197	0.187	94.9%
D	Sr-90	Prostate	1.168	1.128	96.6%
D	Sr-90	Skin	0.616	0.570	92.5%
D	Sr-90	Kidney	0.827	0.700	84.6%

As can be seen from Table 3, FAP doses contribute significantly to the total internal dose, and differences in the FAP to Sr-90 or to Cs-137 values used could impact the total dose assigned and resulting probability of causation (POC) value. Therefore, there should be reasonable agreement among Sr-90 and Cs-137 ratios and among other FAP-to-Sr-90 or to-Cs-137 ratios.

Tables 4a and 4b provide the six largest contributors to these organ doses of the 17 FAPs listed in ORAUT-OTIB-0054, Revision 03. The top six contributors were selected for illustration because they constitute 80% to 95% of the total FAP internal dose assigned, depending on the organ.

<sup>4</sup> A, B, C, and D are not the actual NOCTS claim numbers for these cases. They are placeholders assigned to these cases only for use in this analysis.

<sup>5</sup> For Cases A and D, NIOSH used ORAUT-OTIB-0054, Revision 00 PC-1 of November 19, 2007; for Case B, NIOSH used Revision 02 of March 6, 2014; and for Case C, NIOSH used Revision 03 of February 6, 2015.

**Table 4a. Summary of Top Six FAP Dose Contributors as a Function of Organ**

Case A RBM FAP	Case A RBM Dose (rem)	Case A RBM % of total	Case B Lung FAP	Case B Lung Dose (rem)	Case B Lung % of total	Case B RBM FAP	Case B RBM Dose (rem)	Case B RBM % of total	Case C Testes FAP	Case C Testes Dose (rem)	Case C Testes % of total
Ce-144	0.331	31.5%	Ce-144	2.653	30.3%	Zr-95	0.412	38.7%	I-131	0.0769	41.1%
Zr-95	0.258	24.5%	Y-91	1.801	20.6%	Ce-144	0.227	21.3%	Zr-95	0.0430	23.0%
Sr-90	0.187	17.8%	Zr-95	1.309	15.0%	Sr-89	0.201	18.9%	Ce-144	0.0182	9.8%
Sr-89	0.094	8.9%	Ce-141	1.289	14.7%	Y-91	0.104	9.8%	Ru-103	0.0160	8.6%
Ru-106	0.055	5.2%	Pr-143	0.848	9.7%	Sr-90	0.065	6.1%	Sr-89	0.0126	6.7%
Y-91	0.052	4.9%	Ru-103	0.408	4.7%	Ce-141	0.014	1.3%	Ru-106	0.0075	4.0%
6-FAP sum:	0.977	92.8%	6-FAP sum:	8.308	95.0%	6-FAP sum:	1.022	96.1%	6-FAP sum:	0.174	93.2%
*FAP Total:	1.053	100%	*FAP Total:	8.749	100%	*FAP Total:	1.063	100%	*FAP Total:	0.187	100%

\*FAP Total is the total of all 17 FAP internal doses assigned for that organ.

**Table 4b. Summary of Top Six FAP Dose Contributors as a Function of Organ (continued)**

Case C Lung FAP	Case C Lung Dose (rem)	Case C Lung % of total	Case D Prostate FAP	Case D Prostate Dose (rem)	Case D Prostate % of total	Case D Skin FAP	Case D Skin Dose (rem)	Case D Skin % of total	Case D Kidney FAP	Case D Kidney Dose (rem)	Case D Kidney % of total
Ce-144	4.705	24.1%	I-131	0.274	24.3%	Ru-106	0.165	28.9%	Zr-95	0.186	26.6%
Y-91	3.679	18.8%	Zr-95	0.272	24.1%	I-131	0.124	21.7%	Ru-106	0.169	24.1%
Ce-141	2.820	14.4%	Ru-106	0.195	17.3%	Zr-95	0.094	16.5%	I-131	0.081	11.6%
Zr-95	2.650	13.6%	Ce-144	0.087	7.7%	Ce-144	0.071	12.4%	Ce-144	0.077	11.0%
Pr-143	2.114	10.8%	La-140	0.058	5.1%	Ru-103	0.025	4.4%	Ru-103	0.035	5.0%
I-131	1.956	10.0%	Nb-95	0.049	4.4%	Cs-137	0.025	4.3%	Nb-95	0.032	4.6%
6-FAP sum:	17.924	91.8%	6-FAP sum:	0.936	82.9%	6-FAP sum:	0.503	88.2%	6-FAP sum:	0.580	82.9%
*FAP Total:	19.536	100%	*FAP Total:	1.130	100%	*FAP Total:	0.571	100%	*FAP Total:	0.700	100%

\*FAP Total is the total of all 17 FAP internal doses assigned for that organ.

These results indicate that a variety of FAP radionuclides are important in assigning FAP internal doses, depending on the organ of interest. Therefore, most of the FAP-to-Sr-90 or to-Cs-137 ratio values are important for FAP dose assignment, and there should be reasonable agreement among Sr-90 and Cs-137 ratios and among other FAP-to-Sr-90 or to-Cs-137 ratios for adequate and consistent dose assignments.

## 5.0 ACTINIDE/Sr-90 VALUES

According to NIOSH's ER, the basis for assigning actinide intakes, except for special situations, is directly tied (in a constant ratio) to an indicating radionuclide (Sr-90 or Cs-137) using Table 5-22 (Sr-90 ratios) and/or Table 5-23 (Cs-137 ratios) of ORAUT-TKBS-0007-5, Revision 03. These tables are reproduced here as Figures 12 and 13.

**Figure 12. Table 5-22, Actinide-to-Sr-90 Ratios (ORAUT-TKBS-0007-5, Revision 03)**

Actinide	Reactor fuel types <sup>b</sup>			
	Al	Zr	SS	Max
Ac	8.0E-12 Ac-227	1.3E-11 Ac-227	2.3E-10 Ac-227	2.3E-10 Ac-227
Th	2.4E-08 Th-228	6.4E-08 Th-228	2.3E-07 Th-228	2.3E-07 Th-228
Pa	1.2E-10 Pa-231	1.1E-10 Pa-231	3.8E-09 Pa-231	3.8E-09 Pa-231
U	5.6E-05 U-234	6.2E-06 U-236	1.4E-03 U-234	1.4E-03 U-234
Np	3.4E-06 Np-237	3.7E-06 Np-237	6.8E-07 Np-237	3.7E-06 Np-237
Pu	8.7E-03 Pu-238	1.5E-02 Pu-238	3.7E-03 Pu-239	1.5E-02 Pu-238
Am	1.4E-04 Am-241	3.9E-06 Am-241	9.0E-08 Am-241	1.4E-04 Am-241
Cm	4.9E-05 Cm-244	1.8E-06 Cm-244	1.1E-10 Cm-242	4.9E-05 Cm-244

**Figure 13. Table 5-23, Actinide-to-Cs-137 Ratios (ORAUT-TKBS-0007-5, Revision 03)**

Actinide	Reactor fuel types <sup>b</sup>			
	Al	Zr	SS	Max
Ac	7.6E-12 Ac-227	1.3E-11 Ac-227	2.1E-10 Ac-227	2.1E-10 Ac-227
Th	2.3E-08 Th-228	6.2E-08 Th-228	2.1E-07 Th-228	2.1E-07 Th-228
Pa	1.2E-10 Pa-231	1.1E-10 Pa-231	3.5E-09 Pa-231	3.5E-09 Pa-231
U	5.3E-05 U-234	6.0E-06 U-236	1.3E-03 U-234	1.3E-03 U-234
Np	3.2E-06 Np-237	3.5E-06 Np-237	6.2E-07 Np-237	3.5E-06 Np-237
Pu	8.3E-03 Pu-238	1.4E-02 Pu-238	3.4E-03 Pu-239	1.4E-02 Pu-238
Am	1.3E-04 Am-241	3.7E-06 Am-241	8.3E-08 Am-241	1.3E-04 Am-241
Cm	4.7E-05 Cm-244	1.7E-06 Cm-244	1.0E-10 Cm-242	4.7E-05 Cm-244

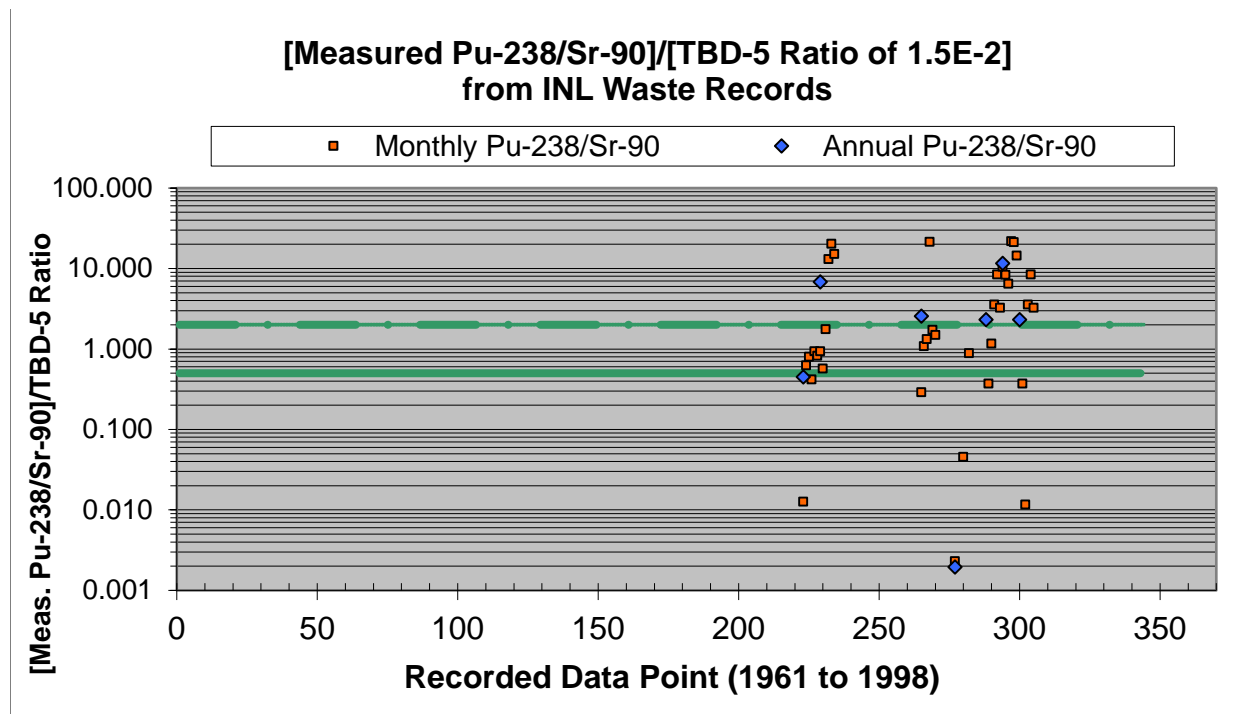
Because this method involves assigning actinide intakes and doses over a long time span and many areas and operations, it results in the majority of the internal alpha dose assignments for INL workers who did not have specific actinide radionuclide bioassays. Therefore, SC&A used measured actinide/Sr-90 and actinide/Cs-137 values to determine if the ratio values recommended in Tables 5-22 and 5-23, respectively, are applicable to DR for INL workers. The major dose-contributing radionuclides in these tables are americium-241 (Am-241), plutonium-238 (Pu-238), Pu-239, uranium-234 (U-234), and U-236; therefore, these were the radionuclides searched for in this analysis (with emphases on Pu-238, Am-241, and U-234, the largest of the dose contributors). SC&A found that there were not significant analyses for actinides in the waste reports until around the mid-1970s, and actinides were many times not

<b>Effective Date:</b> 01/11/2017	<b>Revision No.</b> 0 (Draft)	<b>Document No./Description:</b> SCA-TR-2017-SEC001	<b>Page No.</b> 22 of 39
--------------------------------------	----------------------------------	--	-----------------------------

included in the waste reports even in the 1970s and afterwards. For the actinides that were available, SC&A determined the value of the measured actinide/Sr-90 (or actinide/Cs-137) and compared that value to the recommended value in Table 5-22 (or Table 5-23) to obtain a relative ratio. A relative ratio centered on unity indicates that the measured value is in agreement with the recommended value. A ratio >1.0 indicates that the measured value would assign an intake greater than that recommended in the tables, and a ratio <1.0 indicates that the measured value would assign an intake less than that recommended in the tables.

SC&A analyzed the INL waste report data for monthly and annual radionuclide activity concentrations. Only recorded and paired data points specifically listing an actinide and associated Sr-90 and Cs-137 in units of activity ( $\mu\text{Ci}$ , Ci, etc.) on the same material were used in this analysis; this included air, liquid, and solid waste. Figure 14 contains the results for the Pu-238/Sr-90 data pairs analyzed.

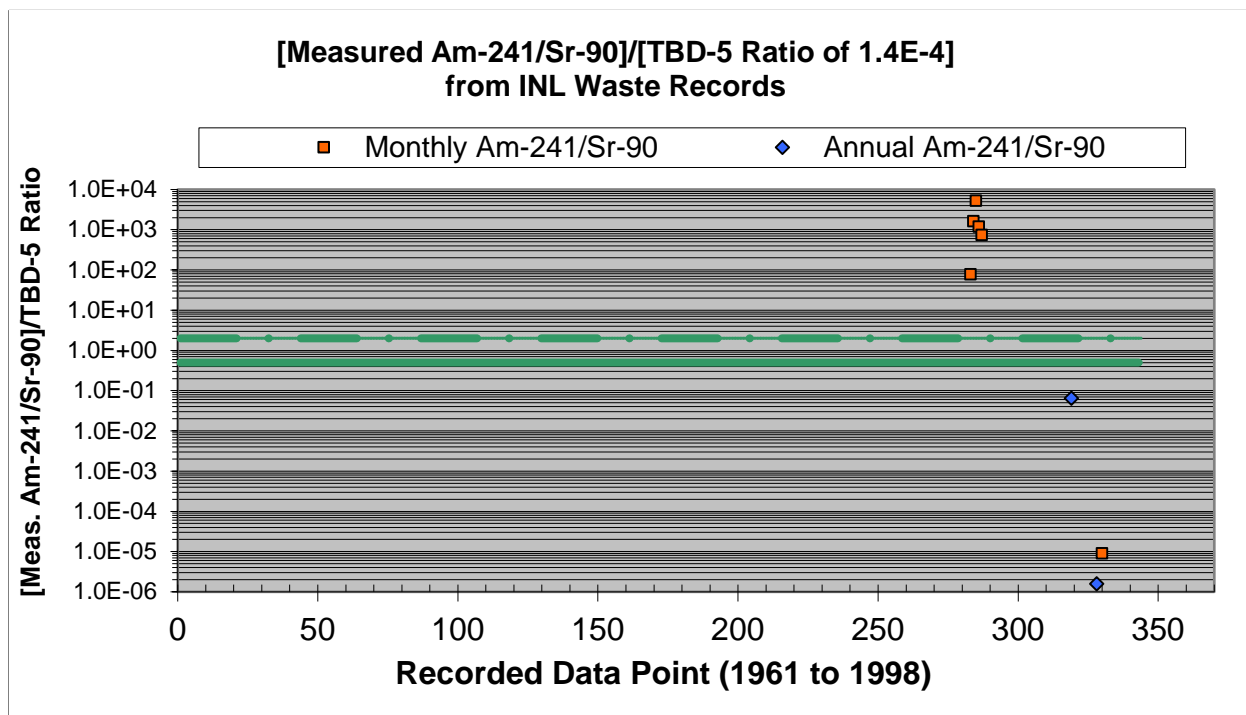
**Figure 14. Measured Pu-238/Sr-90 Values Compared to Ratio Values in Table 5-22 from ORAUT-TKBS-0007-5, Revision 03**



In this case, 32.5% of 40 monthly and 12.5% of eight annual Pu-238/Sr-90 data pairs fell within the 0.5 to 2.0 range; the other ratios had a wide range of values. Similar results were obtained for Pu-238/Cs-137 ratios.

Figure 15 contains the results for the Am-241/Sr-90 data pairs analyzed.

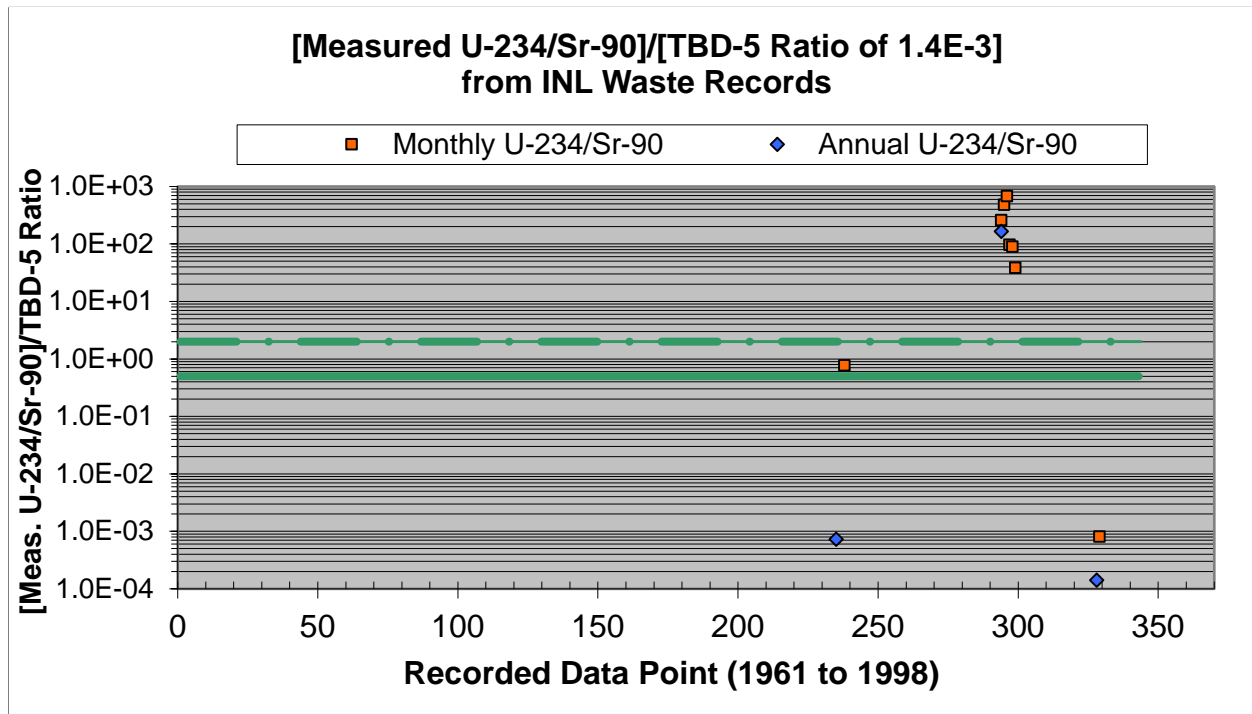
**Figure 15. Measured Am-241/Sr-90 Values Compared to Ratio Values in Table 5-22 from ORAUT-TKBS-0007-5, Revision 03**



In this case, none of the seven monthly and none of the two annual Am-241/Sr-90 data pairs fell within the 0.5 to 2.0 range; the other ratios had a wide range of values (one monthly Am-241/Sr-90 value is off this chart at 8.0E+08). Similar results were obtained for Am-241/Cs-137 ratios.

Figure 16 contains the results for the U-234/Sr-90 data pairs analyzed.

**Figure 16. Measured U-234/Sr-90 Values Compared to Ratio Values in Table 5-22 from ORAUT-TKBS-0007-5, Revision 03**



In this case, 11.1% of the nine monthly and none of the three annual U-234/Sr-90 data pairs fell within the 0.5 to 2.0 range; the other ratios had a wide range of values (one monthly U-234/Sr-90 value is off this chart at 2.2E-07). Similar results were obtained for U-234/Cs-137 ratios.

Table 5 summarizes the results using INL monthly and annual data pairs for the three most important actinide radionuclides evaluated.

**Table 5. Summary of Measured Actinide/Sr-90 and Actinide/Cs-137 Values Compared to Ratio Values Recommended in Tables 5-22 and 5-23 of ORAUT-TKBS-0007-5, Revision 03**

Radionuclides	Recommended NIOSH Ratio (TKBS-0007-5, Tables 5-22 & 5-23 at Max.)	Number of Pairs	Type of Data	Percent of Pairs with Ratios <0.5	Percent of Pairs with Ratios 0.5–2.0	Percent of Pairs with Ratios >2.0	Percent of Pairs with Ratios <0.33	Percent of Pairs with Ratios 0.33–3.0	Percent of Pairs with Ratios >3.0
Am-241/Sr-90	1.40E-04	7	Monthly	14.3%	0.0%	85.7%	14.3%	0.0%	85.7%
Am-241/Sr-90	1.40E-04	2	Annual	100.0%	0.0%	0.0%	100.0%	0.0%	0.0%
Am-241/Cs-137	1.30E-04	7	Monthly	14.3%	0.0%	85.7%	14.3%	0.0%	85.7%
Am-241/Cs-137	1.30E-04	2	Annual	100.0%	0.0%	0.0%	100.0%	0.0%	0.0%
Pu-238/Sr-90	1.50E-02	40	Monthly	25.0%	32.5%	42.5%	17.5%	40.0%	42.5%
Pu-238/Sr-90	1.50E-02	8	Annual	25.0%	12.5%	62.5%	25.0%	50.0%	25.0%
Pu-238/Cs-137	1.40E-02	40	Monthly	55.0%	17.5%	27.5%	50.0%	22.5%	27.5%
Pu-238/Cs-137	1.40E-02	8	Annual	37.5%	37.5%	25.0%	37.5%	37.5%	25.0%
U-234/Sr-90	1.40E-03	9	Monthly	22.2%	11.1%	66.7%	22.2%	11.1%	66.7%
U-234/Sr-90	1.40E-03	3	Annual	66.7%	0.0%	33.3%	66.7%	0.0%	33.3%
U-234/Cs-137	1.30E-03	9	Monthly	33.3%	0.0%	66.7%	33.3%	0.0%	66.7%
U234/Cs137	1.30E-03	3	Annual	66.7%	0.0%	33.3%	66.7%	0.0%	33.3%



<b>Effective Date:</b> 01/11/2017	<b>Revision No.</b> 0 (Draft)	<b>Document No./Description:</b> SCA-TR-2017-SEC001	<b>Page No.</b> 25 of 39
--------------------------------------	----------------------------------	--	-----------------------------

The most important actinide dose contributor of the radionuclides listed in ORAUT-TKBS-0007-5, Tables 5-22 and 5-23, is Pu-238 (see the next section for details). For the 40 monthly Pu-238 data pairs, the measured ratio compared to the recommended ratio fell within the interval of 0.5 to 2.0 32.5% of the time, the measured ratio was greater than the recommended ratio 42.5% of the time, and the measured ratio was less than the recommended ratio 25% of the time. There were fewer (eight) annual Pu-238 data pairs, but those showed the same trend. Similar results were obtained for actinide/Cs-137 ratios.

## 6.0 ACTINIDE CONTRIBUTION TO INTERNAL DOSE

To determine the effect actinide intake values, and the resulting doses, have on the total internal dose assignment, SC&A analyzed the actinide doses in the four DR cases (A, B, C, and D as previously discussed in this report). Table 6 summarizes this analysis.

**Table 6. Summary of Actinide Dose Verse Total Internal Dose**

Case	Indicating Radionuclide	Organ	Total Internal Dose Assigned (rem)	TBD-5 Actinide Organ Dose (rem)	Actinide % of Total Internal Dose (rem)
A	Cs-137	RBM	1.710	0.652	38.4%
B	Cs-137	RBM	1.182	0.119	10.1%
B	Cs-137	Lung	9.842	1.093	11.1%
C	Sr-90 & Cs-137	Lung	21.006	1.469	7.0%
C	Sr-90 & Cs-137	Testes	0.197	0.010	5.1%
D	Sr-90	Prostate	1.168	0.040	3.4%
D	Sr-90	Skin	0.616	0.046	7.5%
D	Sr-90	Kidney	0.827	0.127	15.4%

As can be seen from this table, actinide doses contribute significantly to the total internal dose in some cases. Therefore, differences in actinide-to-Sr-90 or to-Cs-137 ratio values used could impact the total dose assigned and the resulting POC value.

The largest contributor to organ dose of the eight actinides listed in Tables 5-22 and 5-23 of ORAUT-TKBS-0007 was Pu-238, followed by Am-241; the other six radionuclides accounted for the remaining actinide doses. Table 7 summarizes the percent of the individual radionuclide actinide dose compared to the total actinide dose assigned for each organ.

**Table 7. Summary of Actinide Dose Contributors**

<b>Case</b>	<b>Organ</b>	<b>Pu-238 % of Total Actinide Dose</b>	<b>Am-241 % of Total Actinide Dose</b>	<b>Total of Other Six Actinides</b>
A	RBM	98.7%	0.8%	0.5%
B	RBM	98.6%	0.8%	0.6%
B	Lung	92.6%	0.4%	7.0%
C	Testes	96.6%	2.5%	0.9%
C	Lung	97.6%	1.6%	0.8%
D	Prostate	97.8%	1.7%	0.5%
D	Skin	97.7%	0.3%	2.0%
D	Kidney	96.5%	2.2%	1.3%

These results indicate that plutonium and americium radionuclides are most important in assigning actinide internal doses when using ORAUT-TKBS-0007-5 for these organs, with Pu-238 contributing an average of 97% of the actinide internal dose for the organs in this analysis. Therefore, the Pu-238 and Am-241-to-Sr-90 or to-Cs-137 ratio values are important for actinide dose assignments, and there should be reasonable agreement among Sr-90 and Cs-137 ratios and among Pu-238- and Am-241-to-Sr-90 or to-Cs-137 ratios for adequate and consistent dose assignments.

## 7.0 SUMMARY AND CONCLUSIONS

The following list summarizes the results based on the measured data points analyzed to date and SC&A's conclusions about those results:

- **Cs-137/Sr-90** – Many of the Cs-137/Sr-90 values were not centered on unity; 45.7% of 315 monthly data points analyzed for Cs-137/Sr-90 from the 1961–1998 INL waste reports fell within a range of 0.5 to 2.0, and 59.7% fell within a range of 0.33 to 3.0, of the recommended ratio of 1.0. Some ratio values were several orders of magnitude above or below unity (similar results were obtained for annual data pairs). There were no outstanding differences in using monthly and annual data pairs for determining the Cs-137/Sr-90 ratios. Sr-90/Cs-137 results were similar. Therefore, SC&A finds that the measured Cs-137/Sr-90 values are not sufficiently constant to assume a ratio of unity. Differences in FAP intake assignments during DR for the radionuclides listed in Table 7-3 of ORAUT-OTIB-0054 could occur depending on whether Cs-137 bioassays or Sr-90 bioassays were performed.
- **FAP/Sr-90** – The analyses of a total of 280 monthly and 103 annual measured FAP/Sr-90 and FAP/Cs-137 data pairs provided the following results:
  - Ce-144: The majority (average of 95%) of the measured Ce-144/Sr-90 values were below a factor of 2 of the recommended ratio value of 12.5; Ce-144/Cs-137 results were similar. Therefore, SC&A finds that the use of the recommended Ce-144 ratios are reasonable for DR purposes.

Effective Date:	Revision No.	Document No./Description:	Page No.
01/11/2017	0 (Draft)	SCA-TR-2017-SEC001	27 of 39

- Co-60: Almost all measured Co-60/Sr-90 and Co-60/Cs-137 values were greater than the recommended value of 1.8E-4, with many values orders of magnitude greater. Therefore, SC&A finds that the use of the recommended ratio of 1.8E-4 would result in significant under assignment of Co-60 intakes for much of the materials analyzed in this report.
  - Ru-106: Many (average of 76%) of the Ru-106/Sr-90 values were near the recommended ratio value of approximately 1.0, within a factor of 2; Ru-106/Cs-137 results were similar. Therefore, SC&A finds that the use of the recommended Ru-106 ratios are generally reasonable for DR purposes, but there was noticeable scatter in the measured ratio values.
  - Measured FAP ratio values could only be obtained for relatively long-lived radionuclides (Cs-137, Sr-90, Ce-144, Co-60, and Ru-106). Therefore, the actual ratio values for the shorter-lived FAPs in Table 7-3 are not known at this time for the material analyzed.
- **Actinide ratios** – Many of the measured actinide to Sr-90 or Cs-137 values were greater, and a few were less, than the recommended values in ORAUT-TKBS-0007-5, Tables 5-22 and 5-23. Some ratios were orders of magnitude above, and a few were orders of magnitude below, those recommended, with considerable scatter. Relatively few values fell within the 0.5 to 2.0 ratio (or the 0.33 to 3.0 ratio) range. For the most important (from a dose consideration) radionuclide, Pu-238, an average of 48% of the total 40 monthly and 8 annual measured Pu-238 to Sr-90 values compared to the recommended value of 1.5E-2 were equal to or below the recommended value within a factor of 2.0. Similar results were obtained for Am-241 and U-234, but there were fewer data pairs and much more scatter in the ratio values. Actinide/Cs-137 results were similar. SC&A found that measured actinide/Sr-90 or actinide/Cs-137 values are difficult to obtain, because FAPs are generally not analyzed when actinide samples are taken. Therefore, verification of the actinide ratios is not feasible from the data analyzed.
  - **Use of only Sr-90 or Cs-137** – Evaluation of the many data pairs and radionuclide combinations indicates that the sole use of Sr-90 or Cs-137 does not offer an advantage in consistency when assigning FAP or actinide intakes. In addition, many bioassays only analyzed for Cs-137 or Sr-90, not both.
  - **Monthly versus annual data** – Comparing the results obtained from using monthly and annual data in the waste reports to those obtained previously using bioassays, Brookhaven National Laboratory fuels, and smears (SC&A 2015) and those using mostly annual data (SC&A 2016) indicates similar results. There did not appear to be any outstanding differences in the resulting ratio values when using monthly compared to using annual data for the material analyzed for this report.

<b>Effective Date:</b> 01/11/2017	<b>Revision No.</b> 0 (Draft)	<b>Document No./Description:</b> SCA-TR-2017-SEC001	<b>Page No.</b> 28 of 39
--------------------------------------	----------------------------------	--	-----------------------------

## 8.0 REFERENCES

NIOSH 2015. *SEC Petition Evaluation Report – INL Petition SEC-00219 of September 16, 2014*, National Institute for Occupational Safety and Health, Division of Compensation Analysis and Support, Cincinnati, Ohio. March 12, 2015.

ORAUT 2009. *INEL-Actinide Ratios* [Microsoft Excel® workbook], Revision 0, Oak Ridge Associated Universities Team, Oak Ridge, Tennessee. December 18, 2009. [SRDB Ref. ID 77440]

ORAUT-TKBS-0007-5. 2010. *Idaho National Laboratory and Argonne National Laboratory – West – Occupational Internal Dose*, Revision 03, Oak Ridge Associated Universities Team, Cincinnati, Ohio. March 2, 2010.

ORAUT-OTIB-0054. 2007. *Fission and Activation Product Assignment for Internal Dose-Related Gross Beta and Gross Gamma Analyses*, Revision 00 PC-1, Oak Ridge Associated Universities Team, Cincinnati, Ohio. November 19, 2007.

ORAUT-OTIB-0054. 2014. *Fission and Activation Product Assignment for Internal Dose-Related Gross Beta and Gross Gamma Analyses*, Revision 02, Oak Ridge Associated Universities Team, Cincinnati, Ohio. March 6, 2014.

ORAUT-OTIB-0054. 2015. *Fission and Activation Product Assignment for Internal Dose-Related Gross Beta and Gross Gamma Analyses*, Revision 03, Oak Ridge Associated Universities Team, Cincinnati, Ohio. February 6, 2015.

SC&A 2015. *SC&A’s Evaluation of the NIOSH Evaluation Report Proposed Use of Fission-Activation Product Bioassay Indicator Radionuclides (in Conjunction with ORAUT-OTIB-0054 and ORAUT-TKBS-0007-5) for Assessment of Fission-Activation Product and Actinide Intakes at Idaho National Laboratory*, SCA-SEC-2015-0074-E1, Revision 0, SC&A, Inc., Vienna, Virginia, and Saliant, Inc., Jefferson, Maryland. October 26, 2015.

SC&A 2016. *SC&A’s Evaluation of Cs-137/Sr-90 Values and Actinides Using INL Waste Reports in Relationship to Assigning Intakes*, SCA-TR-2016-SEC007, Revision 0, SC&A, Inc., Vienna, Virginia, and Saliant, Inc., Jefferson, Maryland. June 24, 2016.

## ATTACHMENT A. DOCUMENTS AND DATA USED TO EVALUATE Cs-137/Sr-90 VALUES

SRDB Ref #	Page #	Year	Area	Type of Waste	Units	Monthly Measured Cs-137	Monthly Measured Sr-90	Monthly Sr/Cs	Monthly Cs/Sr	Annual Measured Cs-137	Annual Measured Sr-90	Annual Sr/Cs	Annual Cs/Sr
77144	14	1968	TAN	Liquid	Ci	6.000E-03	2.000E-03	3.33E-01	3.00E+00	4.60E-02	2.00E-02	4.35E-01	2.30E+00
77144	14	1968	TAN	Liquid	Ci	8.000E-03	3.000E-03	3.75E-01	2.67E+00	No data	No data	No data	No data
77144	14	1968	TAN	Liquid	Ci	2.000E-03	1.000E-03	5.00E-01	2.00E+00	No data	No data	No data	No data
77144	14	1968	TAN	Liquid	Ci	4.000E-03	3.000E-03	7.50E-01	1.33E+00	No data	No data	No data	No data
77144	14	1968	TAN	Liquid	Ci	6.000E-03	1.000E-03	1.67E-01	6.00E+00	No data	No data	No data	No data
77144	14	1968	TAN	Liquid	Ci	3.000E-03	3.000E-03	1.00E+00	1.00E+00	No data	No data	No data	No data
77144	14	1968	TAN	Liquid	Ci	1.300E-02	5.000E-03	3.85E-01	2.60E+00	No data	No data	No data	No data
77144	14	1968	TAN	Liquid	Ci	3.000E-03	2.000E-03	6.67E-01	1.50E+00	No data	No data	No data	No data
77145	14	1964	MTR-ETR	Liquid	Ci	6.000E-01	1.000E-01	1.67E-01	6.00E+00	4.70E+00	1.50E+00	3.19E-01	3.13E+00
77145	14	1964	MTR-ETR	Liquid	Ci	1.000E-01	1.000E-01	1.00E+00	1.00E+00	No data	No data	No data	No data
77145	14	1964	MTR-ETR	Liquid	Ci	3.000E-01	1.000E-01	3.33E-01	3.00E+00	No data	No data	No data	No data
77145	14	1964	MTR-ETR	Liquid	Ci	3.000E-01	2.000E-01	6.67E-01	1.50E+00	No data	No data	No data	No data
77145	14	1964	MTR-ETR	Liquid	Ci	1.000E-01	4.000E-01	4.00E+00	2.50E-01	No data	No data	No data	No data
77145	14	1964	MTR-ETR	Liquid	Ci	3.000E-01	5.000E-01	1.67E+00	6.00E-01	No data	No data	No data	No data
77145	14	1964	MTR-ETR	Liquid	Ci	1.900E+00	1.000E-01	5.26E-02	1.90E+01	No data	No data	No data	No data
77145	15	1964	CPP	Liquid	Ci	2.000E-01	1.000E-01	5.00E-01	2.00E+00	2.40E+00	1.10E+00	4.58E-01	2.18E+00
77145	15	1964	CPP	Liquid	Ci	3.000E-01	1.000E-01	3.33E-01	3.00E+00	No data	No data	No data	No data
77145	15	1964	CPP	Liquid	Ci	4.000E-01	2.000E-01	5.00E-01	2.00E+00	No data	No data	No data	No data
77145	15	1964	CPP	Liquid	Ci	4.000E-01	2.000E-01	5.00E-01	2.00E+00	No data	No data	No data	No data
77145	15	1964	CPP	Liquid	Ci	2.000E-01	2.000E-01	1.00E+00	1.00E+00	No data	No data	No data	No data
77145	15	1964	CPP	Liquid	Ci	4.000E-01	1.000E-01	2.50E-01	4.00E+00	No data	No data	No data	No data
77145	18	1963	MTR-ETR	Liquid	Ci	2.000E+00	4.000E-01	2.00E-01	5.00E+00	6.70E+00	1.20E+00	1.79E-01	5.58E+00
77145	18	1963	MTR-ETR	Liquid	Ci	6.000E-01	1.000E-01	1.67E-01	6.00E+00	No data	No data	No data	No data
77145	18	1963	MTR-ETR	Liquid	Ci	2.000E-01	1.000E-01	5.00E-01	2.00E+00	No data	No data	No data	No data
77145	18	1963	MTR-ETR	Liquid	Ci	3.000E-01	2.000E-01	6.67E-01	1.50E+00	No data	No data	No data	No data
77145	18	1963	MTR-ETR	Liquid	Ci	4.000E-01	1.000E-01	2.50E-01	4.00E+00	No data	No data	No data	No data
77145	18	1963	MTR-ETR	Liquid	Ci	1.000E-01	1.000E-01	1.00E+00	1.00E+00	No data	No data	No data	No data
77145	18	1963	MTR-ETR	Liquid	Ci	2.000E-01	1.000E-01	5.00E-01	2.00E+00	No data	No data	No data	No data
77145	19	1963	CPP	Liquid	Ci	2.300E+00	2.200E+00	9.57E-01	1.05E+00	1.34E+01	1.04E+01	7.76E-01	1.29E+00
77145	19	1963	CPP	Liquid	Ci	2.200E+00	7.000E-01	3.18E-01	3.14E+00	No data	No data	No data	No data
77145	19	1963	CPP	Liquid	Ci	1.200E+00	8.000E-01	6.67E-01	1.50E+00	No data	No data	No data	No data
77145	19	1963	CPP	Liquid	Ci	1.400E+00	7.000E-01	5.00E-01	2.00E+00	No data	No data	No data	No data
77145	19	1963	CPP	Liquid	Ci	2.000E-01	9.000E-01	4.50E+00	2.22E-01	No data	No data	No data	No data
77145	19	1963	CPP	Liquid	Ci	1.400E+00	1.000E+00	7.14E-01	1.40E+00	No data	No data	No data	No data
77145	19	1963	CPP	Liquid	Ci	1.300E+00	1.100E+00	8.46E-01	1.18E+00	No data	No data	No data	No data
77145	19	1963	CPP	Liquid	Ci	1.100E+00	1.400E+00	1.27E+00	7.86E-01	No data	No data	No data	No data
77145	19	1963	CPP	Liquid	Ci	8.000E-01	4.000E-01	5.00E-01	2.00E+00	No data	No data	No data	No data
77145	19	1963	CPP	Liquid	Ci	7.000E-01	6.000E-01	8.57E-01	1.17E+00	No data	No data	No data	No data
77145	19	1963	CPP	Liquid	Ci	8.000E-01	6.000E-01	7.50E-01	1.33E+00	No data	No data	No data	No data
77145	22	1963	CPP	Liquid	Ci	5.600E-01	6.000E-01	1.07E+00	9.33E-01	2.06E+01	2.26E+01	1.10E+00	9.11E-01
77145	22	1963	CPP	Liquid	Ci	8.900E-01	3.000E-02	3.37E-02	2.97E+01	No data	No data	No data	No data
77145	22	1963	CPP	Liquid	Ci	4.000E-01	6.100E-01	1.53E+00	6.56E-01	No data	No data	No data	No data
77145	22	1963	CPP	Liquid	Ci	6.500E-01	6.600E-01	1.02E+00	9.85E-01	No data	No data	No data	No data
77145	22	1963	CPP	Liquid	Ci	1.150E+00	1.190E+00	1.03E+00	9.66E-01	No data	No data	No data	No data
77145	22	1963	CPP	Liquid	Ci	2.970E+00	3.200E+00	1.08E+00	9.28E-01	No data	No data	No data	No data
77145	22	1963	CPP	Liquid	Ci	2.030E+00	2.060E+00	1.01E+00	9.85E-01	No data	No data	No data	No data
77145	22	1963	CPP	Liquid	Ci	1.930E+00	3.020E+00	1.56E+00	6.39E-01	No data	No data	No data	No data
77145	22	1963	CPP	Liquid	Ci	2.680E+00	3.790E+00	1.41E+00	7.07E-01	No data	No data	No data	No data
77145	22	1963	CPP	Liquid	Ci	3.560E+00	3.530E+00	9.92E-01	1.01E+00	No data	No data	No data	No data
77145	22	1963	CPP	Liquid	Ci	1.940E+00	1.480E+00	7.63E-01	1.31E+00	No data	No data	No data	No data
77145	22	1963	CPP	Liquid	Ci	1.790E+00	2.400E+00	1.34E+00	7.46E-01	No data	No data	No data	No data
85552	2	1968	CPP	Air	uCi/ml	No data	No data	No data	No data	2.20E-11	2.50E-11	1.14E+00	8.80E-01
86857	11	1962	MTR-ETR	Liquid	Ci	3.000E-01	2.000E-01	6.67E-01	1.50E+00	8.10E+00	7.00E-01	8.64E-02	1.16E+01
86857	11	1962	MTR-ETR	Liquid	Ci	1.300E+00	2.000E-01	1.54E-01	6.50E+00	No data	No data	No data	No data
86857	11	1962	MTR-ETR	Liquid	Ci	2.000E-01	1.000E-01	5.00E-01	2.00E+00	No data	No data	No data	No data
86857	11	1962	MTR-ETR	Liquid	Ci	1.000E-01	1.000E-01	1.00E+00	1.00E+00	No data	No data	No data	No data
86857	11	1962	MTR-ETR	Liquid	Ci	7.000E-01	1.000E-01	1.43E-01	7.00E+00	No data	No data	No data	No data
86857	15	1962	CPP	Liquid	Ci	5.600E-01	6.000E-01	1.07E+00	9.33E-01	2.06E+01	2.26E+01	1.10E+00	9.11E-01
86857	15	1962	CPP	Liquid	Ci	8.900E-01	3.000E-02	3.37E-02	2.97E+01	No data	No data	No data	No data
86857	15	1962	CPP	Liquid	Ci	4.000E-01	6.100E-01	1.53E+00	6.56E-01	No data	No data	No data	No data
86857	15	1962	CPP	Liquid	Ci	6.500E-01	6.600E-01	1.02E+00	9.85E-01	No data	No data	No data	No data
86857	15	1962	CPP	Liquid	Ci	1.150E+00	1.190E+00	1.03E+00	9.66E-01	No data	No data	No data	No data
86857	15	1962	CPP	Liquid	Ci	2.970E+00	3.200E+00	1.08E+00	9.28E-01	No data	No data	No data	No data
86857	15	1962	CPP	Liquid	Ci	2.030E+00	2.060E+00	1.01E+00	9.85E-01	No data	No data	No data	No data
86857	15	1962	CPP	Liquid	Ci	1.930E+00	3.020E+00	1.56E+00	6.39E-01	No data	No data	No data	No data
86857	15	1962	CPP	Liquid	Ci	2.680E+00	3.790E+00	1.41E+00	7.07E-01	No data	No data	No data	No data
86857	15	1962	CPP	Liquid	Ci	3.560E+00	3.530E+00	9.92E-01	1.01E+00	No data	No data	No data	No data
86857	15	1962	CPP	Liquid	Ci	1.940E+00	1.480E+00	7.63E-01	1.31E+00	No data	No data	No data	No data
86857	15	1962	CPP	Liquid	Ci	1.790E+00	2.400E+00	1.34E+00	7.46E-01	No data	No data	No data	No data
87106	66	1974	TRA	Liquid	uCi/ml	3.000E-06	2.400E-06	8.00E-01	1.25E+00	No data	No data	No data	No data
87106	66	1974	TRA	Liquid	uCi/ml	3.800E-06	1.600E-06	4.21E-01	2.38E+00	No data	No data	No data	No data
87106	66	1974	TRA	Liquid	uCi/ml	6.900E-06	1.600E-06	2.32E-01	4.31E+00	No data	No data	No data	No data
87191	154-155	1985	CPP	Air	Ci	3.390E-04	3.700E-05	1.09E-01	9.16E+00	4.41E-03	1.89E-03	4.29E-01	2.33E+00
87191	154-155	1985	CPP	Air	Ci	2.650E-04	2.150E-05	8.11E-02	1.23E+01	No data	No data	No data	No data
87191	154-155	1985	CPP	Air	Ci	1.780E-04	6.470E-06	3.63E-02	2.75E+01	No data	No data	No data	No data
87191	154-155	1985	CPP	Air	Ci	2.620E-04	9.920E-06	3.79E-02	2.64E+01	No data	No data	No data	No data
87191	154-155	1985	CPP	Air	Ci	2.050E-04	4.840E-06	2.36E-02	4.24E+01	No data	No data	No data	No data
87191	154-155	1985	CPP	Air	Ci	2.190E-04	6.530E-06	2.98E-02	3.35E+01	No data	No data	No data	No data
87191	157-159	1985	CPP	Liquid	Ci	3.100E-03	1.180E-03	3.81E-01	2.63E+00	2.82E-02	2.16E-02	7.66E-01	1.31E+00
87191	157-159	1985	CPP	Liquid	Ci	3.820E-03	6.900E-04	1.81E-01	5.54E+00	No data	No data	No data	No data
87191	157-159	1985	CPP	Liquid	Ci	2.120E-03	1.220E-03	5.75E-01	1.74E+00	No data	No data	No data	No data
87191	157-159	1985	CPP	Liquid	Ci	2.880E-03	4.090E-03	1.42E+00	7.04E-01	No data	No data	No data	No data
87191	157-159	1985	CPP	Liquid	Ci	4.280E-03	9.890E-04	2.31E-01	4.33E+00	No data	No data	No data	No data
87191	157-159	1985	CPP	Liquid	Ci	5.450E-03	7.040E-03	1.29E+00	7.74E-01	No data	No data	No data	No data
87191	167-168	1985	CPP	Air	Ci	3.390E-04	3.700E-05	1.09E-01	9.16E+00	4.41E-03	1.89E-03	4.29E-01	2.33E+00
87191	167-168	1985	CPP	Air	Ci	2.650E-04	2.150E-05	8.11E-02	1.23E+01	No data	No data	No data	No data
87191	167-168	1985	CPP	Air	Ci	1.780E-04	6.470E-06	3.63E-02	2.75E+01	No data	No data	No data	No data
87191	167-168	1985	CPP	Air	Ci	2.620E-04	9.920E-06	3.79E-02	2.64E+01	No data	No data	No data	No data
87191	167-168	1985	CPP	Air	Ci	2.050E-04	4.840E-06	2.36E-02	4.24E+01	No data	No data	No data	No data
87191	167-168	1985	CPP	Air	Ci	2.190E-04	6.530E-06	2.98E-02	3.35E+01	No data	No data	No data	No data
87296	2	1998	TRA	Liquid	Ci	2.800E-01	1.330E+00	4.75E+00	2.11E-01	3.			

<b>Effective Date:</b> 01/11/2017	<b>Revision No.</b> 0 (Draft)	<b>Document No./Description:</b> SCA-TR-2017-SEC001	<b>Page No.</b> 30 of 39
--------------------------------------	----------------------------------	--	-----------------------------

SRDB Ref #	Page #	Year	Area	Type of Waste	Units	Monthly Measured Cs-137	Monthly Measured Sr-90	Monthly Sr/Cs	Monthly Cs/Sr	Annual Measured Cs-137	Annual Measured Sr-90	Annual Sr/Cs	Annual Cs/Sr
87343	12	1963	MTR-ETR	Liquid	Ci	2.000E-01	1.000E-01	5.00E-01	2.00E+00	No data	No data	No data	No data
87343	12	1963	MTR-ETR	Liquid	Ci	3.000E-01	2.000E-01	6.67E-01	1.50E+00	No data	No data	No data	No data
87343	12	1963	MTR-ETR	Liquid	Ci	4.000E-01	1.000E-01	2.50E-01	4.00E+00	No data	No data	No data	No data
87343	12	1963	MTR-ETR	Liquid	Ci	1.000E-01	1.000E-01	1.00E+00	1.00E+00	No data	No data	No data	No data
87343	12	1963	MTR-ETR	Liquid	Ci	2.000E-01	1.000E-01	5.00E-01	2.00E+00	No data	No data	No data	No data
87343	13	1963	CPP	Liquid	Ci	2.000E-01	2.200E+00	1.10E+01	9.09E-02	1.00E+00	1.04E+01	1.04E+01	9.62E-02
87343	13	1963	CPP	Liquid	Ci	1.000E-01	8.000E-01	8.00E+00	1.25E-01	No data	No data	No data	No data
87343	13	1963	CPP	Liquid	Ci	1.000E-01	7.000E-01	7.00E+00	1.43E-01	No data	No data	No data	No data
87343	13	1963	CPP	Liquid	Ci	1.000E-01	1.000E+00	1.00E+01	1.00E-01	No data	No data	No data	No data
87343	13	1963	CPP	Liquid	Ci	1.000E-01	1.100E+00	1.10E+01	9.09E-02	No data	No data	No data	No data
87343	13	1963	CPP	Liquid	Ci	1.000E-01	1.400E+00	1.40E+01	7.14E-02	No data	No data	No data	No data
87343	13	1963	CPP	Liquid	Ci	1.000E-01	4.000E-01	4.00E+00	2.50E-01	No data	No data	No data	No data
87343	13	1963	CPP	Liquid	Ci	1.000E-01	6.000E-01	6.00E+00	1.67E-01	No data	No data	No data	No data
87343	13	1963	CPP	Liquid	Ci	1.000E-01	6.000E-01	6.00E+00	1.67E-01	No data	No data	No data	No data
87469	18	1982	CPP	Liquid	uCi/ml	1.480E-05	4.900E-04	3.31E+01	3.02E-02	No data	No data	No data	No data
87469	18	1982	CPP	Liquid	uCi/ml	4.180E-04	1.150E-05	2.75E-02	3.63E+01	No data	No data	No data	No data
87469	18	1982	CPP	Liquid	uCi/ml	8.220E-04	4.900E-05	5.96E-02	1.68E+01	No data	No data	No data	No data
87469	18	1982	CPP	Liquid	uCi/ml	2.400E-04	8.600E-05	3.58E-01	2.79E+00	No data	No data	No data	No data
87469	18	1982	CPP	Liquid	uCi/ml	3.200E-04	9.100E-05	2.84E-01	3.52E+00	No data	No data	No data	No data
87633	2	1971	TRA	Liquid	uCi/cc	No data	No data	No data	No data	1.10E+00	1.54E+00	1.40E+00	7.14E-01
87904	14	1962	TRA	Liquid	Ci	No data	No data	No data	No data	8.10E+00	7.00E-01	8.64E-02	1.16E+01
87904	14	1961	TRA	Liquid	Ci	No data	No data	No data	No data	5.90E+00	1.30E+00	2.20E-01	4.54E+00
87904	14	1964	TRA	Liquid	Ci	No data	No data	No data	No data	4.70E+00	1.50E+00	3.19E-01	3.13E+00
87904	14	1965	TRA	Liquid	Ci	No data	No data	No data	No data	6.00E+00	1.70E+00	2.83E-01	3.53E+00
87904	14	1966	TRA	Liquid	Ci	No data	No data	No data	No data	4.00E+00	1.70E+00	4.25E-01	2.35E+00
87904	14	1968	TRA	Liquid	Ci	No data	No data	No data	No data	4.20E+00	3.10E+00	7.38E-01	1.35E+00
87904	14	1967	TRA	Liquid	Ci	No data	No data	No data	No data	5.20E+00	8.10E+00	1.56E+00	6.42E-01
87904	14	1969	TRA	Liquid	Ci	2.660E+00	1.560E+00	5.86E-01	1.71E+00	1.14E+01	8.11E+00	7.11E-01	1.41E+00
87904	14	1969	TRA	Liquid	Ci	1.730E+00	6.700E-01	3.87E-01	2.58E+00	No data	No data	No data	No data
87904	14	1969	TRA	Liquid	Ci	4.700E-01	5.700E-01	1.21E+00	8.25E-01	No data	No data	No data	No data
87904	14	1969	TRA	Liquid	Ci	1.030E+00	4.300E-01	4.17E-01	2.40E+00	No data	No data	No data	No data
87904	14	1969	TRA	Liquid	Ci	8.300E-01	6.800E-01	8.19E-01	1.22E+00	No data	No data	No data	No data
87904	14	1969	TRA	Liquid	Ci	6.000E-01	4.540E-01	7.57E-01	1.32E+00	No data	No data	No data	No data
87904	14	1969	TRA	Liquid	Ci	1.230E+00	4.700E-01	3.82E-01	2.62E+00	No data	No data	No data	No data
87904	14	1969	TRA	Liquid	Ci	1.040E+00	4.600E-01	4.42E-01	2.26E+00	No data	No data	No data	No data
87904	14	1969	TRA	Liquid	Ci	6.800E-01	3.100E-01	4.56E-01	2.19E+00	No data	No data	No data	No data
87904	14	1969	TRA	Liquid	Ci	6.300E-01	8.200E-01	1.30E+00	7.68E-01	No data	No data	No data	No data
87904	16	1961	CPP	Liquid	Ci	No data	No data	No data	No data	4.00E-01	2.00E-01	5.00E-01	2.00E+00
87904	16	1964	CPP	Liquid	Ci	No data	No data	No data	No data	2.40E+00	1.10E+00	4.58E-01	2.18E+00
87904	16	1968	CPP	Liquid	Ci	No data	No data	No data	No data	6.00E-01	1.10E+00	1.83E+00	5.45E-01
87904	16	1966	CPP	Liquid	Ci	No data	No data	No data	No data	1.90E+00	1.60E+00	8.42E-01	1.19E+00
87904	16	1967	CPP	Liquid	Ci	No data	No data	No data	No data	6.00E-01	1.60E+00	2.67E+00	3.75E-01
87904	16	1965	CPP	Liquid	Ci	No data	No data	No data	No data	2.00E+00	2.80E+00	1.40E+00	7.14E-01
87904	16	1969	CPP	Liquid	Ci	1.900E-01	0.02	1.05E-01	9.50E+00	4.35E+00	5.09E+00	1.17E+00	8.55E-01
87904	16	1969	CPP	Liquid	Ci	3.830E+00	4.320E+00	1.13E+00	8.87E-01	No data	No data	No data	No data
87904	16	1969	CPP	Liquid	Ci	3.300E-01	3.000E-01	9.09E-01	1.10E+00	No data	No data	No data	No data
87904	18	1966	TAN	Liquid	Ci	No data	No data	No data	No data	2.00E-02	1.00E-02	5.00E-01	2.00E+00
87904	18	1969	TAN	Liquid	Ci	No data	No data	No data	No data	6.00E-02	3.00E-02	5.00E-01	2.00E+00
87904	18	1967	TAN	Liquid	Ci	No data	No data	No data	No data	3.60E-01	4.00E-02	1.11E-01	9.00E+00
88069	209	1991	CPP	Liquid	Ci	3.810E-04	7.800E-04	2.05E+00	4.88E-01	2.22E-03	8.59E-03	3.86E+00	2.59E-01
88069	209	1991	CPP	Liquid	Ci	4.090E-04	2.200E-04	5.38E-01	1.86E+00	No data	No data	No data	No data
88069	209	1991	CPP	Liquid	Ci	8.410E-04	3.720E-04	4.42E-01	2.26E+00	No data	No data	No data	No data
88069	206-207	1991	CPP	Air	Ci	1.001E-03	2.600E-04	2.60E-01	3.85E+00	2.80E-02	3.31E-03	1.18E-01	8.48E+00
88069	206-207	1991	CPP	Air	Ci	7.538E-04	2.250E-04	2.98E-01	3.35E+00	No data	No data	No data	No data
88069	206-207	1991	CPP	Air	Ci	1.406E-03	4.100E-04	2.92E-01	3.43E+00	No data	No data	No data	No data
88069	206-207	1991	CPP	Air	Ci	3.910E-05	8.800E-06	2.25E-01	4.44E+00	No data	No data	No data	No data
88069	206-207	1991	CPP	Air	Ci	1.765E-04	3.180E-06	1.80E-02	5.55E+01	No data	No data	No data	No data
88069	206-207	1991	CPP	Air	Ci	6.957E-05	2.121E-05	3.05E-01	3.28E+00	No data	No data	No data	No data
88069	383-386	1991	TRA	Air	Ci	2.168E-06	2.386E-07	1.10E-01	9.09E+00	1.37E-05	5.78E-06	4.23E-01	2.37E+00
88069	383-386	1991	TRA	Air	Ci	4.350E-07	7.439E-08	1.71E-01	5.85E+00	No data	No data	No data	No data
88069	383-386	1991	TRA	Air	Ci	9.502E-07	3.788E-07	3.99E-01	2.51E+00	No data	No data	No data	No data
88069	383-386	1991	TRA	Air	Ci	1.965E-06	1.724E-07	8.77E-02	1.14E+01	No data	No data	No data	No data
88069	391-394	1991	TRA	Solid	Ci	7.600E-03	9.000E-03	1.18E+00	8.44E-01	5.19E+01	3.58E-01	6.91E-03	1.45E+02
88069	391-394	1991	TRA	Solid	Ci	6.280E-02	2.439E-01	3.88E+00	2.57E-01	No data	No data	No data	No data
88069	391-394	1991	TRA	Solid	Ci	1.470E-01	6.510E-02	4.43E-01	2.26E+00	No data	No data	No data	No data
88069	391-394	1991	TRA	Solid	Ci	1.130E-02	1.280E-02	1.13E+00	8.83E-01	No data	No data	No data	No data
88069	391-394	1991	TRA	Solid	Ci	4.400E-03	1.000E-03	2.27E-01	4.40E+00	No data	No data	No data	No data
118781	25	1971	INL-OFF SITE	Air	uCi	7.000E-05	3.600E-05	5.14E-01	1.94E+00	No data	No data	No data	No data
118781	26	1971	INL-OFF SITE	Air	uCi	3.000E-05	1.600E-05	5.33E-01	1.88E+00	No data	No data	No data	No data
118781	27	1971	INL-OFF SITE	Air	uCi	1.000E-04	6.500E-05	6.50E-01	1.54E+00	No data	No data	No data	No data
118781	28	1971	INL-OFF SITE	Air	uCi	2.000E-05	1.410E-05	7.05E-01	1.42E+00	No data	No data	No data	No data
118781	30	1971	INL-OFF SITE	Air	uCi	5.000E-05	2.550E-05	5.10E-01	1.96E+00	No data	No data	No data	No data
118781	31	1971	INL-OFF SITE	Air	uCi	1.000E-05	6.360E-06	6.36E-01	1.57E+00	No data	No data	No data	No data
118783	210	1972	INL-OFF SITE	Air	uCi/cc	2.800E-15	2.200E-15	7.86E-01	1.27E+00	No data	No data	No data	No data
118783	211	1972	INL-OFF SITE	Air	uCi/cc	4.600E-15	6.000E-15	1.30E+00	7.67E-01	No data	No data	No data	No data
118783	213	1972	INL-OFF SITE	Air	uCi/cc	1.400E-14	3.300E-15	2.36E-01	4.24E+00	No data	No data	No data	No data
118781	2-23	1971	INL-BUTTE	Air	uCi	4.000E-05	2.800E-05	7.00E-01	1.43E+00	No data	No data	No data	No data
118781	2-23	1971	INL-BUTTE	Air	uCi	6.000E-05	3.000E-05	5.00E-01	2.00E+00	No data	No data	No data	No data
118781	2-23	1971	INL-BUTTE	Air	uCi	4.000E-05	2.090E-05	5.23E-01	1.91E+00	No data	No data	No data	No data
118781	2-23	1971	INL-BUTTE	Air	uCi	1.000E-05	4.910E-06	4.91E-01	2.04E+00	No data	No data	No data	No data
118781	24	1971	INL-OFF SITE	Air	uCi	2.000E-05	8.000E-06	4.00E-01	2.50E+00	No data	No data	No data	No data
118841	106	1978	TAN	Air	Ci	4.244E-07	6.264E-07	1.48E+00	6.78E-01	4.80E-05	2.46E-05	5.13E-01	1.95E+00
118841	106	1978	TAN	Air	Ci	1.431E-06	6.696E-07	4.68E-01	2.14E+00	No data	No data	No data	No data
118841	106	1978	TAN	Air	Ci	6.426E-07	1.731E-06	2.69E+00	3.71E-01	No data	No data	No data	No data
118841	106	1978	TAN	Air	Ci	3.967E-06	3.350E-06	8.44E-01	1.18E+00	No data	No data	No data	No data
118841	106	1978	TAN	Air	Ci	6.337E-06	7.541E-07	1.19E-01	8.40E+00	No data	No data	No data	No data
118841	106	1978	TAN	Air	Ci	4.676E-06	5.067E-07	1.08E-01	9.23E+00	No data	No data	No data	No data
118841	112	1978	DECON SHOP	Air	Ci	1.445E-06	1.636E-06	1.13E+00	8.83E-01	5.59E-06	6.05E-06	1.08E+00	9.24E-01
118841	112	1978	DECON SHOP	Air	Ci	1.408E-06	5.942E-08	4.22E-02	2.37E+01	No data	No data	No data	No data
118841	117	1978	TRA HOT CELL	Air	Ci	4.360E-08	4.655E-07	1.07E+01	9.37E-02	1.01E-05	2.82E-05	2.80E+00	3.57E-01
118841	117	1978	TRA HOT CELL	Air	Ci	2.432E-08	4.888E-08	2.01E+00	4.98E-01	No data	No data	No data	No data
118841	110-111												

<b>Effective Date:</b> 01/11/2017	<b>Revision No.</b> 0 (Draft)	<b>Document No./Description:</b> SCA-TR-2017-SEC001	<b>Page No.</b> 31 of 39
--------------------------------------	----------------------------------	--	-----------------------------

SRDB Ref #	Page #	Year	Area	Type of Waste	Units	Monthly Measured Cs-137	Monthly Measured Sr-90	Monthly Sr/Cs	Monthly Cs/Sr	Annual Measured Cs-137	Annual Measured Sr-90	Annual Sr/Cs	Annual Cs/Sr
118841	125-127	1978	CPP	Liquid	Ci	3.030E-01	8.000E-02	2.64E-01	3.79E+00	No data	No data	No data	No data
118841	125-127	1978	CPP	Liquid	Ci	1.586E-01	4.846E-02	3.06E-01	3.27E+00	No data	No data	No data	No data
118841	125-127	1978	CPP	Liquid	Ci	2.585E-01	8.478E-02	3.28E-01	3.05E+00	No data	No data	No data	No data
118841	125-127	1978	CPP	Liquid	Ci	5.440E-02	6.280E-03	1.15E-01	8.66E+00	No data	No data	No data	No data
118841	125-127	1978	CPP	Liquid	Ci	1.654E-01	4.880E-02	2.95E-01	3.39E+00	No data	No data	No data	No data
118841	128-129	1978	CPP	Solid	Ci	8.410E+01	8.127E+01	9.66E-01	1.03E+00	2.56E+03	1.04E+03	4.06E-01	2.46E+00
118841	128-129	1978	CPP	Solid	Ci	1.002E+02	9.908E+01	9.89E-01	1.01E+00	No data	No data	No data	No data
118841	128-129	1978	CPP	Solid	Ci	6.431E+01	6.308E+01	9.81E-01	1.02E+00	No data	No data	No data	No data
118841	128-129	1978	CPP	Solid	Ci	3.112E+01	2.023E+01	6.50E-01	1.54E+00	No data	No data	No data	No data
118841	128-129	1978	CPP	Solid	Ci	1.225E+01	2.911E+00	2.38E-01	4.21E+00	No data	No data	No data	No data
118841	128-129	1978	CPP	Solid	Ci	2.940E+00	6.201E-01	2.11E-01	4.74E+00	No data	No data	No data	No data
118841	80-81	1976	TRA	Air	Ci	4.360E-08	5.759E-07	1.32E+01	7.57E-02	1.01E-05	2.97E-05	2.95E+00	3.39E-01
118841	80-81	1976	TRA	Air	Ci	2.432E-08	1.106E-07	4.55E+00	2.20E-01	No data	No data	No data	No data
118841	82-85	1978	TRA	Liquid	Ci	2.407E-01	1.273E-01	5.29E-01	1.89E+00	6.935	3.38E+00	4.87E-01	2.05E+00
118841	82-85	1978	TRA	Liquid	Ci	1.466E-01	2.111E-01	1.44E+00	6.94E-01	No data	No data	No data	No data
118841	82-85	1978	TRA	Liquid	Ci	7.859E-01	8.510E-01	1.08E+00	9.24E-01	No data	No data	No data	No data
118841	82-85	1978	TRA	Liquid	Ci	3.039E-01	5.286E-01	1.74E+00	5.75E-01	No data	No data	No data	No data
118841	82-85	1978	TRA	Liquid	Ci	2.233E-01	1.663E-01	7.45E-01	1.34E+00	No data	No data	No data	No data
118841	82-85	1978	TRA	Liquid	Ci	9.476E-02	1.456E-01	1.54E+00	6.51E-01	No data	No data	No data	No data
135857	2	1965	TRA	Liquid	Ci	5.000E-01	4.000E-01	8.00E-01	1.25E+00	6.00E+00	1.70E+00	2.83E-01	3.53E+00
135857	2	1965	CPP	Liquid	Ci	8.000E-01	1.200E+00	1.50E+00	6.67E-01	2.00E+00	2.80E+00	1.40E+00	7.14E-01
135857	2	1965	TRA	Liquid	Ci	1.400E+00	4.000E-01	2.86E-01	3.50E+00	No data	No data	No data	No data
135857	2	1965	TRA	Liquid	Ci	6.000E-01	1.000E-01	1.67E-01	6.00E+00	No data	No data	No data	No data
135857	2	1965	TRA	Liquid	Ci	4.000E-01	1.000E-01	2.50E-01	4.00E+00	No data	No data	No data	No data
135857	2	1965	TRA	Liquid	Ci	1.200E+00	1.000E-01	8.33E-02	1.20E+01	No data	No data	No data	No data
135857	2	1965	TRA	Liquid	Ci	7.000E-01	1.000E-01	1.43E-01	7.00E+00	No data	No data	No data	No data
135857	2	1965	TRA	Liquid	Ci	3.000E-01	2.000E-01	6.67E-01	1.50E+00	No data	No data	No data	No data
135857	2	1965	TRA	Liquid	Ci	1.000E-01	1.000E-01	1.00E+00	1.00E+00	No data	No data	No data	No data
135857	2	1965	TRA	Liquid	Ci	1.000E-01	1.000E-01	1.00E+00	1.00E+00	No data	No data	No data	No data
135857	2	1965	TRA	Liquid	Ci	3.000E-01	1.000E-01	3.33E-01	3.00E+00	No data	No data	No data	No data
135857	2	1965	CPP	Liquid	Ci	1.200E+00	1.000E-01	8.33E-02	1.20E+01	No data	No data	No data	No data
136493	247	1993	CPP	Liquid	Ci	2.140E-05	2.410E-04	1.13E+01	8.88E-02	2.18E-03	2.74E-03	1.26E+00	7.95E-01
136493	247	1993	CPP	Liquid	Ci	5.580E-05	1.430E-04	2.56E+00	3.90E-01	No data	No data	No data	No data
136493	247	1993	CPP	Liquid	Ci	3.860E-05	1.540E-04	3.99E+00	2.51E-01	No data	No data	No data	No data
136493	247	1993	CPP	Liquid	Ci	6.670E-05	2.760E-04	4.14E+00	2.42E-01	No data	No data	No data	No data
136493	288	1993	D&D	Solid	Ci	2.464E-01	5.817E-01	2.36E+00	4.24E-01	4.78E-01	8.266E-01	1.73E+00	5.79E-01
136493	288	1993	D&D	Solid	Ci	2.880E-02	1.440E-01	5.00E+00	2.00E-01	No data	No data	No data	No data
136493	288	1993	D&D	Solid	Ci	2.880E-02	1.440E-01	5.00E+00	2.00E-01	No data	No data	No data	No data
136493	288	1993	D&D	Solid	Ci	4.015E-02	2.006E-02	5.00E-01	2.00E+00	No data	No data	No data	No data
136493	288	1993	D&D	Solid	Ci	8.000E-03	4.000E-03	5.00E-01	2.00E+00	No data	No data	No data	No data
136493	245-246	1995	CPP	Air	Ci	2.526E-05	5.320E-06	2.11E-01	4.75E+00	7.49E-03	1.06E-03	1.41E-01	7.09E+00
136493	245-246	1995	CPP	Air	Ci	2.520E-03	1.580E-05	6.27E-03	1.59E+02	No data	No data	No data	No data
136493	245-246	1995	CPP	Air	Ci	1.078E-04	1.657E-05	1.54E-01	6.51E+00	No data	No data	No data	No data
136493	245-246	1995	CPP	Air	Ci	4.268E-05	2.507E-04	5.87E+00	1.70E-01	No data	No data	No data	No data
136493	245-246	1995	CPP	Air	Ci	2.617E-05	1.653E-06	6.32E-02	1.58E+01	No data	No data	No data	No data
136493	484-485	1993	TRA	Liquid	Ci	1.240E-02	1.570E-02	1.27E+00	7.90E-01	7.86E-02	1.11E-01	1.42E+00	7.05E-01
136493	484-485	1993	TRA	Liquid	Ci	1.116E-02	1.315E-02	1.18E+00	8.49E-01	No data	No data	No data	No data
138116	2	1969	CPP	Air	uCi/cc	No data	No data	No data	No data	4.21E-09	3.81E-09	9.05E-01	1.10E+00
138117	19	1964	CPP	Liquid	Ci	No data	No data	No data	No data	2.40E+00	1.10E+00	4.58E-01	2.18E+00
138117	19	1968	CPP	Liquid	Ci	No data	No data	No data	No data	6.00E-01	1.10E+00	1.83E+00	5.45E-01
138117	19	1966	CPP	Liquid	Ci	No data	No data	No data	No data	1.90E+00	1.60E+00	8.42E-01	1.19E+00
138117	19	1967	CPP	Liquid	Ci	No data	No data	No data	No data	6.00E-01	1.60E+00	2.67E+00	3.75E-01
138117	19	1965	CPP	Liquid	Ci	No data	No data	No data	No data	2.00E+00	2.80E+00	1.40E+00	7.14E-01
139839	55	1971	TAN	Air	Ci	2.346E-05	2.972E-05	1.27E+00	7.89E-01	3.54E-03	5.97E-04	1.69E-01	5.93E+00
139839	55	1971	TAN	Air	Ci	1.072E-04	4.465E-05	4.17E-01	2.40E+00	No data	No data	No data	No data
139839	55	1971	TAN	Air	Ci	6.700E-05	4.090E-06	6.10E-02	1.64E+01	No data	No data	No data	No data
139839	55	1971	TAN	Air	Ci	5.074E-04	8.547E-06	1.68E-02	5.94E+01	No data	No data	No data	No data
139839	55	1971	TAN	Air	Ci	5.693E-04	1.587E-05	2.79E-02	3.59E+01	No data	No data	No data	No data
139839	55	1971	TAN	Air	Ci	2.235E-05	3.439E-05	1.54E+00	6.50E-01	No data	No data	No data	No data
139839	55	1971	TAN	Air	Ci	1.521E-05	4.632E-06	3.05E-01	3.28E+00	No data	No data	No data	No data
139839	55	1971	TAN	Air	Ci	4.805E-06	5.232E-06	1.09E+00	9.18E-01	No data	No data	No data	No data
139839	57	1971	TAN	Liquid	Ci	2.491E-03	2.597E-04	1.04E-01	9.59E+00	1.67E-02	6.37E-03	3.81E-01	2.62E+00
139839	57	1971	TAN	Liquid	Ci	2.271E-06	2.130E-06	9.38E-01	1.07E+00	No data	No data	No data	No data
139839	57	1971	TAN	Liquid	Ci	2.697E-04	7.655E-05	2.84E-01	3.52E+00	No data	No data	No data	No data
139839	57	1971	TAN	Liquid	Ci	3.255E-03	2.265E-04	6.96E-02	1.44E+01	No data	No data	No data	No data
139839	57	1971	TAN	Liquid	Ci	4.895E-04	4.074E-04	8.32E-01	1.20E+00	No data	No data	No data	No data
139839	57	1971	TAN	Liquid	Ci	8.559E-04	7.252E-04	8.47E-01	1.18E+00	No data	No data	No data	No data
139839	57	1971	TAN	Liquid	Ci	9.880E-04	6.250E-04	6.33E-01	1.58E+00	No data	No data	No data	No data
139839	43-44	1971	TRA	Liquid	Ci	9.348E-01	8.791E-01	9.40E-01	1.06E+00	1.01E+01	1.46E+01	1.44E+00	6.94E-01
139839	43-44	1971	TRA	Liquid	Ci	9.389E-01	5.756E-01	6.13E-01	1.63E+00	No data	No data	No data	No data
139839	43-44	1971	TRA	Liquid	Ci	5.360E-01	9.793E-01	1.83E+00	5.47E-01	No data	No data	No data	No data
139839	43-44	1971	TRA	Liquid	Ci	9.398E-01	1.109E+00	1.18E+00	8.47E-01	No data	No data	No data	No data
139839	43-44	1971	TRA	Liquid	Ci	3.201E-01	1.298E+00	4.06E+00	2.47E-01	No data	No data	No data	No data
139839	43-44	1971	TRA	Liquid	Ci	3.901E-01	1.204E+00	3.09E+00	3.24E-01	No data	No data	No data	No data
139839	43-44	1971	TRA	Liquid	Ci	6.207E-01	1.665E+00	2.68E+00	3.73E-01	No data	No data	No data	No data
139839	43-44	1971	TRA	Liquid	Ci	3.210E-01	8.204E-01	2.56E+00	3.91E-01	No data	No data	No data	No data
140037	44	1973	TRA	Liquid	Ci	2.505E-01	4.454E-01	1.78E+00	5.62E-01	3.93E+00	4.23E+00	1.08E+00	9.29E-01
140037	44	1973	TRA	Liquid	Ci	4.413E-01	1.920E-01	4.35E-01	2.30E+00	No data	No data	No data	No data
140037	44	1973	TRA	Liquid	Ci	2.966E-01	7.756E-01	2.61E+00	3.82E-01	No data	No data	No data	No data
140037	44	1973	TRA	Liquid	Ci	4.821E-01	2.663E-01	5.52E-01	1.81E+00	No data	No data	No data	No data
140037	44	1973	TRA	Liquid	Ci	2.529E-01	3.161E-01	1.25E+00	8.00E-01	No data	No data	No data	No data
140037	44	1973	TRA	Liquid	Ci	9.220E-02	4.035E-02	4.38E-01	2.29E+00	No data	No data	No data	No data
140037	57	1973	TAN	Air	Ci	1.117E-05	1.054E-05	9.44E-01	1.06E+00	4.86E-05	1.82E-04	3.75E+00	2.67E-01
140037	57	1973	TAN	Air	Ci	9.009E-06	6.647E-06	7.38E-01	1.36E+00	No data	No data	No data	No data
140037	59	1973	TAN	Solid	Ci	1.320E+00	3.100E-01	2.35E-01	4.26E+00	5.54E+01	1.30E+00	2.35E-02	4.25E+01
140037	59	1973	TAN	Solid	Ci	2.526E+01	6.200E-02	2.45E-03	4.07E+02	No data	No data	No data	No data
140039	85	1974	TAN	Solid	Ci	6.923E+01	2.474E+00	3.57E-02	2.80E+01	2.24E+02	1.54E+01	6.86E-02	1.46E+01
140039	85	1974	TAN	Solid	Ci	7.194E+00	1.689E+00	2.35E-01	4.26E+00	No data	No data	No data	No data
140039	85	1974	TAN	Solid	Ci	3.960E+00	9.300E-01	2.35E-01	4.26E+00	No data	No data	No data	No data
140039	87	1974	CFA	Liquid	Ci	2.475E-03	2.244E-03	9					

<b>Effective Date:</b> 01/11/2017	<b>Revision No.</b> 0 (Draft)	<b>Document No./Description:</b> SCA-TR-2017-SEC001	<b>Page No.</b> 32 of 39
--------------------------------------	----------------------------------	--	-----------------------------

SRDB Ref #	Page #	Year	Area	Type of Waste	Units	Monthly Measured Cs-137	Monthly Measured Sr-90	Monthly Sr/Cs	Monthly Cs/Sr	Annual Measured Cs-137	Annual Measured Sr-90	Annual Sr/Cs	Annual Cs/Sr
140040	114	1975	TAN	Air	Ci	4.817E-06	3.023E-06	6.28E-01	1.59E+00	No data	No data	No data	No data
140040	114	1975	TAN	Air	Ci	1.702E-06	1.878E-06	1.10E+00	9.06E-01	No data	No data	No data	No data
140040	117	1975	TAN	Solid	Ci	5.940E+00	1.395	2.35E-01	4.26E+00	9.76E+00	4.371	4.48E-01	2.23E+00
140040	117	1975	TAN	Solid	Ci	3.823E+00	2.976	7.78E-01	1.28E+00	No data	No data	No data	No data
140040	119	1975	CFA	Liquid	Ci	4.729E-04	8.976E-04	1.90E+00	5.27E-01	3.29E-02	1.33E-02	4.05E-01	2.47E+00
140040	119	1975	CFA	Liquid	Ci	1.538E-03	8.305E-04	5.40E-01	1.85E+00	No data	No data	No data	No data
140040	119	1975	CFA	Liquid	Ci	2.540E-03	4.977E-04	1.96E-01	5.10E+00	No data	No data	No data	No data
140040	119	1975	CFA	Liquid	Ci	5.092E-03	1.296E-03	2.55E-01	3.93E+00	No data	No data	No data	No data
140040	119	1975	CFA	Liquid	Ci	2.157E-03	1.623E-03	7.52E-01	1.33E+00	No data	No data	No data	No data
140040	119	1975	CFA	Liquid	Ci	2.100E-03	7.40E-04	3.52E-01	2.84E+00	No data	No data	No data	No data
140040	122	1975	CPP	Air	Ci	1.097E-01	4.126E-02	3.76E-01	2.66E+00	5.97E-01	2.43E-01	4.07E-01	2.46E+00
140040	122	1975	CPP	Air	Ci	3.427E-02	1.341E-02	3.91E-01	2.56E+00	No data	No data	No data	No data
140040	122	1975	CPP	Air	Ci	6.030E-02	1.370E-02	2.27E-01	4.40E+00	No data	No data	No data	No data
140040	122	1975	CPP	Air	Ci	2.010E-02	7.450E-03	3.71E-01	2.70E+00	No data	No data	No data	No data
140040	122	1975	CPP	Air	Ci	7.480E-03	4.200E-03	5.61E-01	1.78E+00	No data	No data	No data	No data
140040	122	1975	CPP	Air	Ci	2.720E-03	1.080E-03	3.97E-01	2.52E+00	No data	No data	No data	No data
140040	135	1975	INL	Liquid	Ci	2.356E-07	1.949E-06	8.27E+00	1.21E-01	8.80E-06	7.77E-05	8.82E+00	1.13E-01
140040	135	1975	INL	Liquid	Ci	7.602E-07	8.619E-06	1.13E+01	8.82E-02	No data	No data	No data	No data
140040	135	1975	INL	Liquid	Ci	1.619E-06	1.391E-05	8.59E+00	1.16E-01	No data	No data	No data	No data
140040	125-126	1975	CPP	Liquid	Ci	5.661E-02	5.646E-02	9.97E-01	1.00E+00	4.78E-01	4.60E-01	9.62E-01	1.04E+00
140040	125-126	1975	CPP	Liquid	Ci	3.106E-02	3.877E-02	1.25E+00	8.01E-01	No data	No data	No data	No data
140040	125-126	1975	CPP	Liquid	Ci	3.964E-02	8.484E-02	2.14E+00	4.67E-01	No data	No data	No data	No data
140040	125-126	1975	CPP	Liquid	Ci	4.059E-02	2.977E-02	7.33E-01	1.36E+00	No data	No data	No data	No data
140040	125-126	1975	CPP	Liquid	Ci	2.103E-02	2.157E-02	1.03E+00	9.75E-01	No data	No data	No data	No data
140040	125-126	1975	CPP	Liquid	Ci	1.826E-03	1.361E-02	7.45E+00	1.34E-01	No data	No data	No data	No data
140040	128-130	1975	CPP	Solid	Ci	4.964E+01	4.953E+01	9.98E-01	1.00E+00	5.03E+02	1.71E+02	3.41E-01	2.93E+00
140040	128-130	1975	CPP	Solid	Ci	2.703E+00	3.000E-03	1.11E-03	9.01E+02	No data	No data	No data	No data
140040	128-130	1975	CPP	Solid	Ci	1.000E+01	4.200E-01	4.20E-02	2.38E+01	No data	No data	No data	No data
140040	128-130	1975	CPP	Solid	Ci	3.192E+02	1.635E+01	5.12E-04	1.95E+03	No data	No data	No data	No data
140040	128-130	1975	CPP	Solid	Ci	2.475E+01	2.475E+01	1.00E+00	1.00E+00	No data	No data	No data	No data
140040	128-130	1975	CPP	Solid	Ci	4.680E+01	4.680E+01	1.00E+00	1.00E+00	No data	No data	No data	No data
151986	4	1961	MTR	Liquid	uCi/ml	4.320E-06	1.980E-06	4.58E-01	2.18E+00	No data	No data	No data	No data
151986	7	1961	MTR	Liquid	uCi/ml	8.900E-06	8.500E-06	9.55E-01	1.05E+00	No data	No data	No data	No data
151986	9	1961	MTR	Liquid	uCi/ml	3.100E-06	2.700E-06	8.71E-01	1.15E+00	No data	No data	No data	No data
151986	13	1961	MTR	Liquid	uCi/ml	1.170E-05	4.500E-07	3.85E-02	2.60E+01	No data	No data	No data	No data
151986	15	1961	MTR	Liquid	uCi/ml	1.400E-05	2.050E-07	1.46E-02	6.83E+01	No data	No data	No data	No data
151986	23	1961	MTR	Liquid	uCi/ml	1.030E-06	4.000E-07	3.88E-01	2.58E+00	No data	No data	No data	No data

**NOTICE:** This report has been reviewed to identify and redact any information that is protected by the Privacy Act 5 U.S.C. § 552a and has been cleared for distribution.



<b>Effective Date:</b> 01/11/2017	<b>Revision No.</b> 0 (Draft)	<b>Document No./Description:</b> SCA-TR-2017-SEC001	<b>Page No.</b> 33 of 39
--------------------------------------	----------------------------------	--	-----------------------------

## ATTACHMENT B. DOCUMENTS AND DATA USED TO EVALUATE FAP/Sr-90 AND FAP/Cs-137 VALUES

**Table B.1. Documents and Data Used to Evaluate Ce-144/Sr-90 and Ce-144/Cs-137 Values**

SRDB Ref #	Page #	Year	Area	Type of Waste	Type of Data	Measured Cs-137 Activity	Measured Sr-90 Activity	Measured Ce-144 Activity	Ce-144/Sr-90	[Ce-144/Sr-90] Divided by Table 5-22 Ratio of 12.5
77145	15	1964	CPP	Liquid	Monthly	4.00E-01	2.00E-01	1.00E-01	5.00E-01	4.00E-02
77145	15	1964	CPP	Liquid	Monthly	4.00E-01	2.00E-01	1.80E+00	9.00E+00	7.20E-01
77145	15	1964	CPP	Liquid	Monthly	3.00E-01	1.00E-01	1.30E+00	1.30E+01	1.04E+00
77145	15	1964	CPP	Liquid	Annual	2.40E+00	1.10E+00	6.30E+00	5.73E+00	4.58E-01
86857	11	1962	MTR-ETR	Liquid	Monthly	1.00E-01	1.00E-01	4.60E+00	4.60E+01	3.68E+00
86857	11	1962	MTR-ETR	Liquid	Monthly	7.00E-01	1.00E-01	7.10E+00	7.10E+01	5.68E+00
86857	11	1962	MTR-ETR	Liquid	Monthly	3.00E-01	2.00E-01	2.09E+01	1.05E+02	8.36E+00
86857	11	1962	MTR-ETR	Liquid	Monthly	2.00E-01	1.00E-01	1.47E+01	1.47E+02	1.18E+01
86857	11	1962	MTR-ETR	Liquid	Monthly	1.30E+00	2.00E-01	4.84E+01	2.42E+02	1.94E+01
86857	11	1962	MTR-ETR	Liquid	Annual	8.10E+00	7.00E-01	1.73E+02	2.46E+02	1.97E+01
87106	66	1974	TRA	Liquid	Monthly	3.00E-06	2.40E-06	7.00E-06	2.92E+00	2.33E-01
87106	66	1974	TRA	Liquid	Monthly	6.90E-06	1.60E-06	1.00E-05	6.25E+00	5.00E-01
87191	157-159	1985	CPP	Liquid	Monthly	5.45E-03	7.04E-03	8.46E-04	1.20E-01	9.61E-03
87191	157-159	1985	CPP	Liquid	Monthly	2.88E-03	4.09E-03	5.10E-04	1.25E-01	9.98E-03
87191	154-155	1985	CPP	Air	Monthly	2.05E-04	4.84E-06	1.53E-06	3.16E-01	2.53E-02
87191	167-168	1985	CPP	Stack	Monthly	2.05E-04	4.84E-06	1.53E-06	3.16E-01	2.53E-02
87191	157-159	1985	CPP	Liquid	Monthly	4.28E-03	9.89E-04	1.58E-03	1.60E+00	1.28E-01
87191	157-159	1985	CPP	Liquid	Monthly	2.12E-03	1.22E-03	2.06E-03	1.69E+00	1.35E-01
87191	154-155	1985	CPP	Air	Annual	4.41E-03	1.89E-03	1.53E-06	8.09E-04	6.47E-05
87191	167-168	1985	CPP	Stack	Annual	4.41E-03	1.89E-03	1.53E-06	8.09E-04	6.47E-05
87191	157-159	1985	CPP	Liquid	Annual	2.82E-02	2.16E-02	5.00E-03	2.31E-01	1.85E-02
87904	16	1969	CPP	Liquid	Monthly	3.83E+00	4.32E+00	5.10E-01	1.18E-01	9.44E-03
87904	16	1969	CPP	Liquid	Annual	4.35E+00	5.09E+00	5.10E-01	1.00E-01	8.02E-03
88069	391-394	1991	TRA	Solid	Monthly	1.47E-01	6.51E-02	1.00E-03	1.54E-02	1.23E-03
88069	391-394	1991	TRA	Solid	Monthly	7.60E-03	9.00E-03	1.30E-03	1.44E-01	1.16E-02
88069	391-394	1991	TRA	Solid	Monthly	1.13E-02	1.28E-02	3.20E-03	2.50E-01	2.00E-02
88069	391-394	1991	TRA	Solid	Monthly	6.28E-02	2.44E-01	6.67E-01	2.73E+00	2.19E-01
88069	391-394	1991	TRA	Solid	Annual	5.19E+01	3.58E-01	7.71E-01	2.15E+00	1.72E-01
118841	121-123	1978	CPP	Air	Monthly	1.82E-02	6.04E-03	2.23E-05	3.69E-03	2.95E-04
118841	121-123	1978	CPP	Air	Monthly	3.09E-04	3.08E-04	2.17E-05	7.06E-02	5.65E-03
118841	121-123	1978	CPP	Air	Monthly	5.50E-03	1.37E-03	1.10E-04	8.02E-02	6.42E-03
118841	121-123	1978	CPP	Air	Monthly	8.31E-03	5.14E-03	5.11E-04	9.93E-02	7.95E-03
118841	125-127	1978	CPP	Liquid	Monthly	1.65E-01	4.88E-02	6.95E-03	1.42E-01	1.14E-02
118841	82-85	1978	TRA	Liquid	Monthly	1.47E-01	2.11E-01	5.57E-02	2.64E-01	2.11E-02
118841	82-85	1978	TRA	Liquid	Monthly	7.86E-01	8.51E-01	2.35E-01	2.76E-01	2.20E-02
118841	125-127	1978	CPP	Liquid	Monthly	3.03E-01	8.00E-02	2.29E-02	2.86E-01	2.29E-02
118841	125-127	1978	CPP	Liquid	Monthly	3.23E-01	4.46E-02	2.71E-02	6.09E-01	4.87E-02
118841	125-127	1978	CPP	Liquid	Monthly	2.59E-01	8.48E-02	5.94E-02	7.00E-01	5.60E-02
118841	82-85	1978	TRA	Liquid	Monthly	9.48E-02	1.46E-01	1.09E-01	7.47E-01	5.98E-02
118841	82-85	1978	TRA	Liquid	Monthly	2.41E-01	1.27E-01	1.25E-01	9.84E-01	7.87E-02
118841	106	1978	TAN	Air	Monthly	6.34E-06	7.54E-07	8.12E-07	1.08E+00	8.62E-02
118841	110-111	1978	TSF	Air	Monthly	4.93E-06	6.95E-07	8.12E-07	1.17E+00	9.35E-02
118841	128-129	1978	CPP	Solid	Monthly	2.94E+00	6.20E-01	7.83E-01	1.26E+00	1.01E-01
118841	125-127	1978	CPP	Liquid	Monthly	1.59E-01	4.85E-02	7.00E-02	1.44E+00	1.16E-01
118841	121-123	1978	CPP	Air	Monthly	7.56E-03	2.15E-03	3.27E-03	1.52E+00	1.22E-01
118841	128-129	1978	CPP	Solid	Monthly	3.11E+01	2.02E+01	3.80E+01	1.88E+00	1.50E-01
118841	125-127	1978	CPP	Liquid	Monthly	5.44E-02	6.28E-03	1.22E-02	1.94E+00	1.55E-01
118841	128-129	1978	CPP	Solid	Monthly	8.41E+01	8.13E+01	1.61E+02	1.98E+00	1.59E-01
118841	128-129	1978	CPP	Solid	Monthly	6.43E+01	6.31E+01	1.25E+02	1.99E+00	1.59E-01
118841	128-129	1978	CPP	Solid	Monthly	1.00E+02	9.91E+01	1.97E+02	1.99E+00	1.59E-01
118841	82-85	1978	TRA	Liquid	Monthly	2.23E-01	1.66E-01	3.50E-01	2.10E+00	1.68E-01
118841	82-85	1978	TRA	Liquid	Monthly	3.04E-01	5.29E-01	1.72E+00	3.25E+00	2.60E-01
118841	128-129	1978	CPP	Solid	Monthly	1.23E+01	2.91E+00	4.05E+01	1.39E+01	1.11E+00
118841	106	1978	TAN	Air	Annual	4.80E-05	2.46E-05	1.92E-06	7.79E-02	6.23E-03
118841	80-81	1976	TRA	Air	Annual	1.01E-05	2.97E-05	2.47E-06	8.31E-02	6.64E-03
118841	117	1978	TRA HOT CELL	Air	Annual	1.01E-05	2.82E-05	2.47E-06	8.75E-02	7.00E-03
118841	110-111	1978	TSF	Air	Annual	4.24E-05	1.86E-05	1.92E-06	1.03E-01	8.26E-03
118841	121-123	1978	CPP	Air	Annual	8.57E-02	2.38E-02	4.72E-03	1.98E-01	1.58E-02
118841	125-127	1978	CPP	Liquid	Annual	2.02E+00	5.90E-01	4.19E-01	7.11E-01	5.69E-02
118841	82-85	1978	TRA	Liquid	Annual	6.94E+00	3.38E+00	3.69E+00	1.09E+00	8.75E-02
118841	128-129	1978	CPP	Solid	Annual	2.56E+03	1.04E+03	2.32E+03	2.23E+00	1.78E-01
136493	484-485	1993	TRA	Liquid	Monthly	1.24E-02	1.57E-02	2.66E-03	1.70E-01	1.36E-02
136493	484-485	1993	TRA	Liquid	Annual	7.86E-02	1.11E-01	8.68E-03	7.79E-02	6.23E-03
139839	43-44	1971	TRA	Liquid	Monthly	5.36E-01	9.79E-01	4.20E-01	4.29E-01	3.43E-02
139839	43-44	1971	TRA	Liquid	Monthly	6.21E-01	1.67E+00	8.89E-01	5.34E-01	4.27E-02
139839	43-44	1971	TRA	Liquid	Monthly	9.40E-01	1.11E+00	6.36E-01	5.73E-01	4.59E-02
139839	43-44	1971	TRA	Liquid	Monthly	3.90E-01	1.20E+00	8.24E-01	6.84E-01	5.47E-02
139839	43-44	1971	TRA	Liquid	Monthly	9.39E-01	5.76E-01	5.04E-01	8.76E-01	7.01E-02
139839	55	1971	TAN	Air	Monthly	2.24E-05	3.44E-05	5.57E-05	1.62E+00	1.30E-01
139839	43-44	1971	TRA	Liquid	Monthly	3.20E-01	1.30E+00	3.25E+00	2.50E+00	2.00E-01
139839	43-44	1971	TRA	Liquid	Monthly	3.21E-01	8.20E-01	3.07E+00	3.74E+00	2.99E-01
139839	43-44	1971	TRA	Liquid	Monthly	9.35E-01	8.79E-01	5.57E+00	6.33E+00	5.07E-01
139839	55	1971	TAN	Air	Annual	3.54E-03	5.97E-04	2.68E-04	4.49E-01	3.59E-02
139839	43-44	1971	TRA	Liquid	Annual	1.01E+01	1.46E+01	2.67E+01	1.84E+00	1.47E-01
140037	59	1973	TAN	Solid	Monthly	1.32E+00	3.10E-01	2.90E-01	9.35E-01	7.48E-02
140037	59	1973	TAN	Solid	Monthly	2.53E+01	6.20E-02	5.80E-02	9.35E-01	7.48E-02
140037	44	1973	TRA	Liquid	Monthly	4.41E-01	1.92E-01	6.62E-01	3.45E+00	2.76E-01
140037	44	1973	TRA	Liquid	Annual	3.93E+00	4.23E+00	3.50E+00	8.28E-01	6.62E-02
140037	59	1973	TAN	Solid	Annual	5.54E+01	1.30E+00	1.22E+00	9.35E-01	7.48E-02
140039	85	1974	TAN	Solid	Monthly	6.92E+01	2.47E+00	2.03E+00	8.21E-01	6.56E-02
140039	85	1974	TAN	Solid	Monthly	7.19E+00	1.69E+00	1.58E+00	9.35E-01	7.48E-02
140039	164	1974	TAN	Solid	Monthly	2.64E+01	6.20E+00	5.80E+00	9.35E-01	7.48E-02
140039	164	1974	TAN	Solid	Monthly	1.17E+02	4.08E+00	3.83E+00	9.38E-01	7.50E-02
140039	87	1974	CFA	Liquid	Monthly	1.74E-03	2.21E-03	3.77E-03	1.71E+00	1.37E-01
140039	146-149	1974	TRA	Liquid	Monthly	5.44E-01	1.93E-01	8.94E-01	4.62E+00	3.70E-01
140039	85	1974	TAN	Solid	Monthly	3.96E+00	9.30E-01	8.70E+00	9.35E+00	7.48E-01
140039	85	1974	TAN	Solid	Annual	2.24E+02	1.54E+01	1.41E+01	9.17E-01	7.34E-02
140039	164	1974	TAN	Solid	Annual	1.44E+02	1.03E+01	9.63E+00	9.37E-01	7.49E-02
140039	146-149	1974	TRA	Liquid	Annual	2.45E+00	2.97E-01	5.83E+00	1.96E+01	1.57E+00
140039	87	1974	CFA	Liquid	Annual	2.36E-02	2.47E-02	3.77E-03	1.53E-01	1.22E-02

**NOTICE:** This report has been reviewed to identify and redact any information that is protected by the Privacy Act 5 U.S.C. § 552a and has been cleared for distribution.

<b>Effective Date:</b> 01/11/2017	<b>Revision No.</b> 0 (Draft)	<b>Document No./Description:</b> SCA-TR-2017-SEC001	<b>Page No.</b> 34 of 39
--------------------------------------	----------------------------------	--	-----------------------------

SRDB Ref #	Page #	Year	Area	Type of Waste	Type of Data	Measured Cs-137 Activity	Measured Sr-90 Activity	Measured Ce-144 Activity	Ce-144/Sr-90	[Ce-144/Sr-90] Divided by Table 5-22 Ratio of 12.5
140040	122	1975	CPP	Air	Monthly	7.48E-03	4.20E-03	1.18E-05	2.81E-03	2.25E-04
140040	117	1975	TAN	Solid	Monthly	3.82E+00	2.98E+00	2.07E-02	6.94E-03	5.55E-04
140040	122	1975	CPP	Air	Monthly	1.10E-01	4.13E-02	6.20E-04	1.50E-02	1.20E-03
140040	122	1975	CPP	Air	Monthly	2.72E-03	1.08E-03	2.11E-05	1.95E-02	1.56E-03
140040	122	1975	CPP	Air	Monthly	2.01E-02	7.45E-03	3.26E-04	4.38E-02	3.50E-03
140040	125-126	1975	CPP	Liquid	Monthly	4.06E-02	2.98E-02	2.38E-03	8.01E-02	6.41E-03
140040	122	1975	CPP	Air	Monthly	6.03E-02	1.37E-02	1.25E-03	9.12E-02	7.30E-03
140040	122	1975	CPP	Air	Monthly	3.43E-02	1.34E-02	1.23E-03	9.17E-02	7.34E-03
140040	125-126	1975	CPP	Liquid	Monthly	3.11E-02	3.88E-02	5.00E-03	1.29E-01	1.03E-02
140040	125-126	1975	CPP	Liquid	Monthly	3.96E-02	8.48E-02	1.44E-02	1.69E-01	1.35E-02
140040	117	1975	TAN	Solid	Monthly	5.94E+00	1.40E+00	1.30E+00	9.32E-01	7.46E-02
140040	128-130	1975	CPP	Solid	Monthly	3.19E+02	1.64E-01	4.00E-02	2.45E-01	1.96E-02
140040	128-130	1975	CPP	Solid	Monthly	1.00E+01	4.20E-01	5.00E-01	1.19E+00	9.52E-02
140040	119	1975	CFA	Liquid	Monthly	2.10E+03	7.40E-04	3.55E-03	4.80E+00	3.84E-01
140040	128-130	1975	CPP	Solid	Monthly	2.70E+00	3.00E-03	1.35E+00	4.50E+02	3.60E+01
140040	114	1975	TAN	Air	Annual	1.24E-05	2.21E-05	8.11E-15	3.66E-10	2.93E-11
140040	128-130	1975	CPP	Solid	Annual	5.03E+02	1.71E+02	1.90E+00	1.11E-02	8.84E-04
140040	117	1975	TAN	Solid	Annual	9.76E+00	4.37E+00	1.32E+00	3.02E-01	2.42E-02
140040	125-126	1975	CPP	Liquid	Annual	4.78E-01	4.60E-01	1.64E-01	3.56E-01	2.85E-02
140040	122	1975	CPP	Air	Annual	5.97E-01	2.43E-01	1.13E-01	4.64E-01	3.71E-02
140040	119	1975	CFA	Liquid	Annual	3.29E-02	1.33E-02	1.96E-02	1.47E+00	1.18E-01

**Table B.2. Documents & Data Used to Evaluate Co-60/Sr-90 & Co-60/Cs-137 Values**

SRDB Ref #	Page #	Year	Area	Type of Waste	Type of Data	Measured Cs-137 Activity	Measured Sr-90 Activity	Measured Co-60 Activity	Co-60/Sr-90	[Co-60/Sr-90] Divided by Table 5-22 Ratio of 1.85E-4
87106	66	1974	TRA	Liquid	Monthly	3.80E-06	1.60E-06	2.00E-06	1.25E+00	6.76E+03
87106	66	1974	TRA	Liquid	Monthly	3.00E-06	2.40E-06	3.20E-06	1.33E+00	7.21E+03
87106	66	1974	TRA	Liquid	Monthly	6.90E-06	1.60E-06	5.80E-06	3.63E+00	1.96E+04
87191	154-155	1985	CPP	Air	Monthly	3.39E-04	3.70E-05	6.34E-08	1.71E-03	9.26E+00
87191	154-155	1985	CPP	Air	Monthly	2.65E-04	2.15E-05	1.29E-07	6.00E-03	3.24E+01
87191	154-155	1985	CPP	Air	Annual	4.41E-03	1.89E-03	1.17E-06	6.17E-04	3.33E+00
87191	157-159	1985	CPP	Liquid	Monthly	3.10E-03	1.18E-03	3.08E-05	2.61E-02	1.41E+02
87191	157-159	1985	CPP	Liquid	Monthly	3.82E-03	6.90E-04	5.62E-05	8.14E-02	4.40E+02
87191	157-159	1985	CPP	Liquid	Monthly	2.88E-03	4.09E-03	1.35E-04	3.30E-02	1.78E+02
87191	157-159	1985	CPP	Liquid	Annual	2.82E-02	2.16E-02	2.24E-04	1.04E-02	5.60E+01
87191	167-168	1985	CPP	Air	Monthly	3.39E-04	3.70E-05	6.34E-08	1.71E-03	9.26E+00
87191	167-168	1985	CPP	Air	Monthly	2.65E-04	2.15E-05	1.29E-07	6.00E-03	3.24E+01
87191	167-168	1985	CPP	Air	Annual	4.41E-03	1.89E-03	1.17E-06	6.17E-04	3.33E+00
87469	18	1982	CPP	Liquid	Monthly	3.20E-04	4.67E-05	5.91E-06	5.13E-02	2.77E+02
87469	18	1982	CPP	Liquid	Monthly	4.18E-04	1.15E-05	5.91E-06	5.14E-01	2.78E+03
87469	18	1982	CPP	Liquid	Monthly	2.40E-04	8.60E-05	1.06E-05	1.23E-01	6.66E+02
87469	18	1982	CPP	Liquid	Monthly	1.48E-05	4.90E-04	3.14E-05	6.41E-02	3.46E+02
87469	18	1982	CPP	Liquid	Monthly	8.22E-04	4.90E-05	6.52E-05	1.33E+00	7.19E+03
87904	14	1969	TRA	Liquid	Monthly	6.80E-01	3.10E-01	3.50E-01	1.13E+00	6.10E+03
87904	14	1969	TRA	Liquid	Monthly	1.03E+00	4.30E-01	1.63E-01	1.63E+00	8.80E+03
87904	14	1969	TRA	Liquid	Monthly	6.30E-01	8.20E-01	9.70E-01	1.18E+00	6.39E+03
87904	14	1969	TRA	Liquid	Monthly	4.70E-01	5.70E-01	1.47E+00	2.58E+00	1.39E+04
87904	14	1969	TRA	Liquid	Monthly	6.00E-01	4.54E-01	1.57E+00	3.46E+00	1.87E+04
87904	14	1969	TRA	Liquid	Monthly	8.30E-01	6.80E-01	1.94E+00	2.85E+00	1.54E+04
87904	14	1969	TRA	Liquid	Monthly	1.73E+00	6.70E-01	2.22E+00	3.31E+00	1.79E+04
87904	14	1969	TRA	Liquid	Monthly	1.04E+00	4.60E-01	4.21E+00	9.15E+00	4.95E+04
87904	14	1969	TRA	Liquid	Monthly	1.23E+00	4.70E-01	4.77E+00	1.01E+01	5.49E+04
87904	14	1966	TRA	Liquid	Annual	4.00E+00	1.70E+00	7.00E+00	4.12E+00	2.23E+04
87904	14	1965	TRA	Liquid	Annual	6.00E+00	1.70E+00	1.40E+01	8.24E+00	4.45E+04
87904	14	1969	TRA	Liquid	Annual	1.14E+01	8.11E+00	2.09E+01	2.58E+00	1.39E+04
87904	14	1968	TRA	Liquid	Annual	4.20E+00	3.10E+00	2.18E+01	7.03E+00	3.80E+04
87904	14	1962	TRA	Liquid	Annual	8.10E+00	7.00E-01	2.70E+01	3.86E+01	2.08E+05
87904	14	1967	TRA	Liquid	Annual	5.20E+00	8.10E+00	3.30E+01	4.07E+00	2.20E+04
87904	14	1964	TRA	Liquid	Annual	4.70E+00	1.50E+00	3.90E+01	2.60E+01	1.41E+05
88069	209	1991	CPP	Liquid	Annual	2.22E-03	8.59E-03	2.87E-04	3.34E-02	1.81E+02
88069	206-207	1991	CPP	Air	Monthly	7.54E-04	2.25E-04	1.67E-07	7.42E-04	4.01E+00
88069	206-207	1991	CPP	Air	Monthly	1.77E-04	3.18E-06	2.04E-07	6.42E-02	3.47E+02
88069	206-207	1991	CPP	Air	Monthly	1.00E-03	2.60E-04	4.55E-07	1.75E-03	9.46E+00
88069	206-207	1991	CPP	Air	Monthly	1.41E-03	4.10E-04	7.40E-07	1.80E-03	9.76E+00
88069	206-207	1991	CPP	Air	Annual	2.80E-02	3.31E-03	1.87E-05	5.67E-03	3.06E+01
88069	383-386	1991	TRA	Air	Monthly	4.35E-07	7.44E-08	3.80E-06	5.11E+01	2.76E+05
88069	383-386	1991	TRA	Air	Monthly	9.50E-07	3.79E-07	4.43E-06	1.17E+01	6.32E+04
88069	383-386	1991	TRA	Air	Monthly	1.97E-06	1.72E-07	4.88E-06	2.83E+01	1.53E+05
88069	383-386	1991	TRA	Air	Monthly	2.17E-06	2.39E-07	5.03E-06	2.11E+01	1.14E+05
88069	383-386	1991	TRA	Air	Annual	1.37E-05	5.78E-06	6.02E-05	1.04E+01	5.63E+04
88069	391-394	1991	TRA	Solid	Monthly	7.60E-03	9.00E-03	2.17E-01	2.41E+01	1.30E+05
88069	391-394	1991	TRA	Solid	Monthly	1.13E-02	1.28E-02	2.73E-01	2.13E+01	1.15E+05
88069	391-394	1991	TRA	Solid	Monthly	6.28E-02	2.44E-01	2.58E+00	1.06E+01	5.72E+04
88069	391-394	1991	TRA	Solid	Monthly	1.47E-01	6.51E-02	3.99E+00	6.13E+01	3.31E+05
88069	391-394	1991	TRA	Solid	Monthly	4.40E-03	1.00E-03	1.92E+01	1.92E+04	1.04E+08
88069	391-394	1991	TRA	Solid	Annual	5.19E+01	3.58E-01	4.21E+02	1.18E+03	6.35E+06
118841	106	1978	TAN	Air	Monthly	3.97E-06	3.35E-06	1.15E-06	3.43E-01	1.86E+03
118841	106	1978	TAN	Air	Monthly	6.34E-06	7.54E-07	3.15E-06	4.18E+00	2.26E+04
118841	106	1978	TAN	Air	Annual	4.80E-05	2.46E-05	2.22E-05	9.01E-01	4.87E+03
118841	112	1978	DECON SHOP	Air	Monthly	1.45E-06	1.64E-06	6.46E-07	3.95E-01	2.13E+03
118841	112	1978	DECON SHOP	Air	Annual	5.59E-06	6.05E-06	3.28E-06	5.43E-01	2.94E+03
118841	117	1978	TRA HOT CELL	Air	Annual	1.01E-05	2.82E-05	8.32E-07	2.95E-02	1.60E+02
118841	110-111	1978	TSF	Air	Monthly	2.52E-06	1.71E-06	5.04E-07	2.94E-01	1.59E+03
118841	110-111	1978	TSF	Air	Monthly	4.93E-06	6.95E-07	3.15E-06	4.53E+00	2.45E+04
118841	110-111	1978	TSF	Air	Annual	4.24E-05	1.86E-05	1.89E-05	1.02E+00	5.50E+03
118841	121-123	1978	CPP	Air	Monthly	3.09E-04	3.08E-04	5.43E-07	1.77E-03	9.54E+00
118841	121-123	1978	CPP	Air	Monthly	8.31E-03	5.14E-03	1.58E-06	3.07E-04	1.66E+00
118841	121-123	1978	CPP	Air	Monthly	1.82E-02	6.04E-03	2.19E-06	3.63E-04	1.96E+00
118841	121-123	1978	CPP	Air	Monthly	6.88E-03	2.15E-03	5.42E-06	2.52E-03	1.36E+01
118841	121-123	1978	CPP	Air	Annual	8.57E-02	2.38E-02	1.47E-05	6.17E-04	3.33E+00
118841	125-127	1978	CPP	Liquid	Monthly	5.44E-02	6.28E-03	2.00E-04	3.18E-02	1.72E+02
118841	125-127	1978	CPP	Liquid	Monthly	3.03E-01	8.00E-02	3.58E-04	4.48E-03	2.42E+01
118841	125-127	1978	CPP	Liquid	Monthly	1.59E-01	4.85E-02	3.94E-04	8.13E-03	4.39E+01
118841	125-127	1978	CPP	Liquid	Monthly	1.65E-01	4.88E-02	4.72E-04	9.67E-03	5.23E+01
118841	125-127	1978	CPP	Liquid	Monthly	2.59E-01	8.48E-02	5.46E-04	6.44E-03	3.48E+01

**NOTICE:** This report has been reviewed to identify and redact any information that is protected by the Privacy Act 5 U.S.C. § 552a and has been cleared for distribution.

<b>Effective Date:</b> 01/11/2017	<b>Revision No.</b> 0 (Draft)	<b>Document No./Description:</b> SCA-TR-2017-SEC001	<b>Page No.</b> 35 of 39
--------------------------------------	----------------------------------	--	-----------------------------

SRDB Ref #	Page #	Year	Area	Type of Waste	Type of Data	Measured Cs-137 Activity	Measured Sr-90 Activity	Measured Co-60 Activity	Co-60/Sr-90	[Co-60/Sr-90] Divided by Table 5-22 Ratio of 1.85E-4
118841	125-127	1978	CPP	Liquid	Monthly	3.23E-01	4.46E-02	7.42E-04	1.67E-02	9.01E+01
118841	125-127	1978	CPP	Liquid	Annual	2.02E+00	5.90E-01	2.03E-02	3.45E-02	1.86E+02
118841	128-129	1978	CPP	Solid	Monthly	1.23E+01	2.91E+00	7.61E-01	2.61E-01	1.41E+03
118841	128-129	1978	CPP	Solid	Annual	2.56E+03	1.04E+03	2.02E+01	1.95E-02	1.05E+02
118841	80-81	1976	TRA	Air	Annual	1.01E-05	2.97E-05	8.32E-07	2.80E-02	1.51E+02
118841	82-85	1978	TRA	Liquid	Monthly	2.41E-01	1.27E-01	4.81E-02	3.78E-01	2.04E+03
118841	82-85	1978	TRA	Liquid	Monthly	9.48E-02	1.46E-01	8.14E-02	5.59E-01	3.02E+03
118841	82-85	1978	TRA	Liquid	Monthly	1.47E-01	2.11E-01	8.17E-02	3.87E-01	2.09E+03
118841	82-85	1978	TRA	Liquid	Monthly	7.86E-01	8.51E-01	1.02E-01	1.20E-01	6.47E+02
118841	82-85	1978	TRA	Liquid	Monthly	3.04E-01	5.29E-01	1.27E-01	2.40E-01	1.30E+03
118841	82-85	1978	TRA	Liquid	Monthly	2.23E-01	1.66E-01	1.56E-01	9.40E-01	5.08E+03
118841	82-85	1978	TRA	Liquid	Annual	6.64E+00	3.38E+00	1.31E+00	3.88E-01	2.10E+03
136493	247	1993	CPP	Liquid	Monthly	3.86E-05	1.54E-04	4.26E-05	2.77E-01	1.50E+03
136493	247	1993	CPP	Liquid	Monthly	6.67E-05	2.76E-04	4.58E-05	1.66E-01	8.97E+02
136493	247	1993	CPP	Liquid	Monthly	5.58E-05	1.43E-04	6.82E-05	4.77E-01	2.58E+03
136493	247	1993	CPP	Liquid	Annual	2.18E-03	2.74E-03	1.00E-03	3.66E-01	1.98E+03
136493	288	1993	D&D	Solid	Monthly	8.00E-03	4.00E-03	8.00E-03	2.00E+00	1.08E+04
136493	288	1993	D&D	Solid	Monthly	2.88E-02	1.44E-01	2.88E-02	2.00E-01	1.08E+03
136493	288	1993	D&D	Solid	Monthly	4.02E-02	2.01E-02	4.02E-02	2.00E+00	1.08E+04
136493	288	1993	D&D	Solid	Monthly	1.54E-01	7.68E-02	1.54E-01	2.01E+00	1.09E+04
136493	288	1993	D&D	Solid	Monthly	2.46E-01	5.82E-01	2.56E-01	4.40E-01	2.38E+03
136493	288	1993	D&D	Solid	Annual	4.78E-01	8.27E-01	4.88E-01	5.90E-01	3.19E+03
136493	245-246	1995	CPP	Air	Monthly	2.62E-05	1.65E-06	2.65E-08	1.60E-02	8.67E+01
136493	245-246	1995	CPP	Air	Monthly	2.52E-03	1.58E-05	1.75E-06	1.11E-01	5.99E+02
136493	245-246	1995	CPP	Air	Monthly	1.08E-04	1.66E-05	3.72E-08	2.25E-03	1.21E+01
136493	245-246	1995	CPP	Air	Annual	7.49E-03	1.06E-03	5.22E-06	4.94E-03	2.67E+01
136493	484-485	1993	TRA	Liquid	Monthly	1.12E-02	1.32E-02	8.15E-02	6.20E+00	3.35E+04
136493	484-485	1993	TRA	Liquid	Monthly	1.24E-02	1.57E-02	6.32E-01	4.02E+01	2.18E+05
136493	484-485	1993	TRA	Liquid	Annual	7.86E-02	1.11E-01	2.05E+00	1.84E+01	9.95E+04
139839	55	1971	TAN	Air	Monthly	1.07E-04	4.47E-05	9.73E-06	2.18E-01	1.18E+03
139839	55	1971	TAN	Air	Annual	3.54E-03	5.97E-04	1.67E-05	2.80E-02	1.51E+02
139839	43-44	1971	TRA	Liquid	Monthly	6.21E-01	1.67E+00	5.78E-01	3.47E-01	1.88E+03
139839	43-44	1971	TRA	Liquid	Monthly	9.35E-01	8.79E-01	2.80E+00	3.19E+00	1.72E+04
139839	43-44	1971	TRA	Liquid	Annual	1.01E+01	1.46E+01	4.34E+00	2.98E-01	1.61E+03
140037	44	1973	TRA	Liquid	Monthly	4.82E-01	2.66E-01	6.29E-02	2.36E-01	1.28E+03
140037	44	1973	TRA	Liquid	Monthly	2.53E-01	3.16E-01	6.32E-02	2.00E-01	1.08E+03
140037	44	1973	TRA	Liquid	Monthly	9.22E-02	4.04E-02	1.06E-01	2.62E+00	1.41E+04
140037	44	1973	TRA	Liquid	Monthly	2.97E-01	7.76E-01	1.14E-01	1.47E-01	7.95E+02
140037	44	1973	TRA	Liquid	Monthly	2.51E-01	4.45E-01	2.51E-01	5.62E-01	3.04E+03
140037	44	1973	TRA	Liquid	Monthly	4.41E-01	1.92E-01	8.83E-01	4.60E+00	2.48E+04
140037	44	1973	TRA	Liquid	Annual	3.93E+00	4.23E+00	3.97E+00	9.39E-01	5.08E+03
140037	59	1973	TAN	Solid	Monthly	2.53E+01	6.20E-02	2.50E+02	4.03E+03	2.18E+07
140037	59	1973	TAN	Solid	Annual	5.54E+01	1.30E+00	4.70E+02	3.61E+02	1.95E+06
140039	85	1974	TAN	Solid	Monthly	6.92E+01	2.47E+00	6.00E+02	2.43E+02	1.31E+06
140039	85	1974	TAN	Solid	Annual	2.24E+02	1.54E+01	1.68E+03	1.09E+02	5.90E+05
140039	87	1974	CFA	Liquid	Monthly	2.48E-03	2.24E-03	8.75E-04	3.90E-01	2.11E+03
140039	87	1974	CFA	Liquid	Monthly	6.43E-03	1.30E-03	1.13E-03	8.71E-01	4.71E+03
140039	87	1974	CFA	Liquid	Monthly	1.74E-03	2.21E-03	2.32E-03	1.05E+00	5.67E+03
140039	87	1974	CFA	Liquid	Annual	2.36E-02	2.47E-02	9.62E-03	3.89E-01	2.11E+03
140039	164	1974	TAN	Solid	Monthly	1.17E+02	4.08E+00	1.00E+03	2.45E+02	1.32E+06
140039	164	1974	TAN	Solid	Annual	1.44E+02	1.03E+01	1.08E+03	1.05E+02	5.68E+05
140039	166	1974	CFA	Liquid	Monthly	2.09E-03	1.97E-03	9.24E-04	4.68E-01	2.53E+03
140039	166	1974	CFA	Liquid	Monthly	5.18E-03	3.20E-03	1.92E-03	5.99E-01	3.24E+03
140039	166	1974	CFA	Liquid	Monthly	2.27E-03	7.39E-03	2.46E-03	3.33E-01	1.80E+03
140039	166	1974	CFA	Liquid	Annual	1.09E-02	1.72E-02	5.30E-03	3.09E-01	1.67E+03
140039	146-149	1974	TRA	Liquid	Monthly	2.10E-01	1.04E-01	1.30E-01	1.25E+00	6.74E+03
140039	146-149	1974	TRA	Liquid	Monthly	5.44E-01	1.93E-01	2.77E-01	1.43E+00	7.75E+03
140039	146-149	1974	TRA	Liquid	Annual	2.45E+00	2.97E-01	1.41E+00	4.76E+00	2.57E+04
140040	114	1975	TAN	Air	Annual	1.24E-05	2.21E-05	6.35E-05	2.87E+00	1.55E+04
140040	114	1975	TAN	Air	Monthly	7.92E-07	1.39E-06	1.12E-05	8.03E+00	4.34E+04
140040	117	1975	TAN	Solid	Monthly	3.82E+00	2.98E+00	1.79E-02	6.02E-03	3.25E+01
140040	117	1975	TAN	Solid	Annual	9.76E+00	4.37E+00	1.79E-02	4.10E-03	2.21E+01
140040	119	1975	CFA	Liquid	Monthly	2.10E-03	7.39E-04	1.91E-04	2.58E-01	1.40E+03
140040	119	1975	CFA	Liquid	Monthly	2.16E-03	1.62E-03	4.75E-04	2.93E-01	1.58E+03
140040	119	1975	CFA	Liquid	Monthly	1.54E-03	1.08E-03	8.31E-04	1.30E+00	7.02E+03
140040	119	1975	CFA	Liquid	Monthly	2.54E-03	4.98E-04	1.49E-03	3.00E+00	1.62E+04
140040	119	1975	CFA	Liquid	Monthly	5.09E-03	1.30E-03	4.52E-03	3.49E+00	1.88E+04
140040	119	1975	CFA	Liquid	Annual	3.29E-02	1.33E-02	8.43E-03	6.32E-01	3.41E+03
140040	122	1975	CPP	Air	Monthly	7.48E-03	4.20E-03	2.67E-06	6.36E-04	3.44E+00
140040	122	1975	CPP	Air	Monthly	2.01E-02	7.45E-03	2.96E-05	3.97E-03	2.15E+01
140040	122	1975	CPP	Air	Monthly	3.43E-02	1.34E-02	6.10E-05	4.55E-03	2.46E+01
140040	122	1975	CPP	Air	Monthly	1.10E-01	4.13E-02	6.70E-05	1.62E-03	8.77E+00
140040	122	1975	CPP	Air	Monthly	6.03E-02	1.37E-02	7.13E-05	5.20E-03	2.81E+01
140040	122	1975	CPP	Air	Annual	5.97E-01	2.43E-01	7.74E-04	3.19E-03	1.72E+01
140040	135	1975	INL	Liquid	Monthly	2.36E-07	1.95E-06	2.39E-07	1.23E-01	6.62E+02
140040	135	1975	INL	Liquid	Monthly	7.60E-07	8.62E-06	1.04E-06	1.21E-01	6.53E+02
140040	135	1975	INL	Liquid	Monthly	1.62E-06	1.39E-05	3.00E-06	2.15E-01	1.16E+03
140040	135	1975	INL	Liquid	Annual	8.80E-06	7.77E-05	1.80E-05	2.31E-01	1.25E+03
140040	125-126	1975	CPP	Liquid	Monthly	5.66E-02	5.65E-02	1.84E-04	3.26E-03	1.76E+01
140040	125-126	1975	CPP	Liquid	Monthly	2.10E-02	2.16E-02	3.09E-04	1.43E-02	7.74E+01
140040	125-126	1975	CPP	Liquid	Annual	4.78E-01	4.60E-01	9.87E-04	2.15E-03	1.16E+01
140040	128-130	1975	CPP	Solid	Monthly	2.70E+00	3.00E-03	1.50E-04	5.00E-02	2.70E+02
140040	128-130	1975	CPP	Solid	Monthly	4.96E+01	4.95E+01	8.54E-03	1.73E-04	9.32E-01
140040	128-130	1975	CPP	Solid	Monthly	1.00E+01	4.20E-01	3.25E-01	7.74E-01	4.18E+03
140040	128-130	1975	CPP	Solid	Monthly	4.68E+01	4.68E+01	1.08E+03	2.31E+01	1.25E+05
140040	128-130	1975	CPP	Solid	Monthly	3.19E+02	1.64E-01	1.12E+03	6.86E+03	3.71E+07
140040	128-130	1975	CPP	Solid	Annual	5.03E+02	1.71E+02	2.20E+03	1.28E+01	6.94E+04

**NOTICE:** This report has been reviewed to identify and redact any information that is protected by the Privacy Act 5 U.S.C. § 552a and has been cleared for distribution.

**Table B.3. Documents and Data Used to Evaluate Ru-106/Sr-90 and Ru-106/Cs-137 Values**

SRDB Ref #	Page #	Year	Area	Type of Waste	Type of Data	Measured Cs-137 Activity	Measured Sr-90 Activity	Measured Ru-106 Activity	[Ru-106/Sr-90] Divided by Table 5-22 Ratio of 1.0
77145	15	1964	CPP	Liquid	Monthly	4.00E-01	2.00E-01	1.00E-01	5.00E-01
77145	15	1964	CPP	Liquid	Monthly	2.00E-01	2.00E-01	1.00E-01	5.00E-01
77145	15	1964	CPP	Liquid	Monthly	4.00E-01	2.00E-01	2.00E-01	1.00E+00
77145	15	1964	CPP	Liquid	Monthly	4.00E-01	1.00E-01	4.00E-01	4.00E+00
77145	15	1964	CPP	Liquid	Annual	2.40E+00	1.10E+00	1.40E+00	1.27E+00
86857	15	1962	CPP	Liquid	Monthly	1.93E+00	3.02E+00	1.00E-02	3.31E-03
86857	15	1962	CPP	Liquid	Monthly	2.68E+00	3.79E+00	3.00E-02	7.92E-03
86857	15	1962	CPP	Liquid	Monthly	1.79E+00	2.40E+00	3.00E-02	1.25E-02
86857	15	1962	CPP	Liquid	Monthly	1.94E+00	1.48E+00	2.00E-02	1.35E-02
86857	15	1962	CPP	Liquid	Monthly	3.56E+00	3.53E+00	2.30E-01	6.52E-02
86857	15	1962	CPP	Liquid	Monthly	5.60E-01	6.00E-01	1.70E-01	2.83E-01
86857	15	1962	CPP	Liquid	Annual	2.06E+01	2.26E+01	5.50E-01	2.44E-02
87191	167-168	1985	CPP	Air	Monthly	1.78E-04	6.47E-06	9.40E-07	1.45E-01
87191	157-159	1985	CPP	Liquid	Monthly	5.45E-03	7.04E-03	3.78E-04	5.37E-02
87191	157-159	1985	CPP	Liquid	Monthly	2.88E-03	4.09E-03	3.51E-04	8.58E-02
87191	154-155	1985	CPP	Air	Monthly	1.78E-04	6.47E-06	9.40E-07	1.45E-01
87191	154-155	1985	CPP	Air	Monthly	3.39E-04	3.70E-05	1.09E-05	2.95E-01
87191	167-168	1985	CPP	Air	Monthly	3.39E-04	3.70E-05	1.09E-05	2.95E-01
87191	157-159	1985	CPP	Liquid	Monthly	4.28E-03	9.89E-04	4.09E-04	4.14E-01
87191	154-155	1985	CPP	Air	Monthly	2.65E-04	2.15E-05	9.27E-06	4.31E-01
87191	167-168	1985	CPP	Air	Monthly	2.65E-04	2.15E-05	9.27E-06	4.31E-01
87191	157-159	1985	CPP	Liquid	Monthly	3.10E-03	1.18E-03	1.05E-03	8.90E-01
87191	157-159	1985	CPP	Liquid	Monthly	3.82E-03	6.90E-04	9.37E-04	1.36E+00
87191	157-159	1985	CPP	Liquid	Monthly	2.12E-03	1.22E-03	1.43E-02	1.17E+01
87191	154-155	1985	CPP	Air	Annual	4.41E-03	1.89E-03	7.80E-05	4.12E-02
87191	167-168	1985	CPP	Air	Annual	4.41E-03	1.89E-03	7.80E-05	4.12E-02
87191	157-159	1985	CPP	Liquid	Annual	2.82E-02	2.16E-02	2.02E-02	9.33E-01
87469	18	1982	CPP	Liquid	Monthly	1.48E-05	4.90E-04	1.20E-04	2.45E-01
87469	18	1982	CPP	Liquid	Monthly	3.20E-04	9.10E-05	3.93E-05	4.32E-01
87469	18	1982	CPP	Liquid	Monthly	2.40E-04	8.60E-05	4.78E-05	5.56E-01
87469	18	1982	CPP	Liquid	Monthly	8.22E-04	4.90E-05	1.29E-04	2.63E+00
87469	18	1982	CPP	Liquid	Monthly	4.18E-04	1.15E-05	1.27E-04	1.10E+01
87904	16	1969	CPP	Liquid	Monthly	1.90E-01	2.00E-02	1.88E+00	9.40E+01
87904	16	1967	CPP	Liquid	Annual	6.00E-01	1.60E+00	2.00E-01	1.25E-01
87904	16	1965	CPP	Liquid	Annual	2.00E+00	2.80E+00	5.00E-01	1.79E-01
87904	16	1969	CPP	Liquid	Annual	4.35E+00	5.09E+00	1.88E+00	3.69E-01
87904	16	1968	CPP	Liquid	Annual	6.00E-01	1.10E+00	5.00E-01	4.55E-01
87904	16	1966	CPP	Liquid	Annual	1.90E+00	1.60E+00	1.00E+00	6.25E-01
88069	206-207	1991	CPP	Air	Monthly	1.00E-03	2.60E-04	7.20E-05	2.77E-01
88069	209	1991	CPP	Liquid	Monthly	3.81E-04	7.80E-04	2.93E-04	3.76E-01
88069	206-207	1991	CPP	Air	Monthly	7.54E-04	2.25E-04	1.12E-04	4.98E-01
88069	206-207	1991	CPP	Air	Monthly	1.41E-03	4.10E-04	2.23E-04	5.44E-01
88069	206-207	1991	CPP	Air	Monthly	6.96E-05	2.12E-05	4.12E-05	1.94E+00
88069	206-207	1991	CPP	Air	Monthly	3.91E-05	8.80E-06	6.31E-05	7.17E+00
88069	206-207	1991	CPP	Air	Monthly	1.77E-04	3.18E-06	5.33E-05	1.68E+01
88069	209	1991	CPP	Liquid	Annual	2.22E-03	8.59E-03	1.43E-03	1.66E-01
88069	206-207	1991	CPP	Air	Annual	2.80E-02	3.31E-03	1.46E-03	4.43E-01
118841	125-127	1978	CPP	Liquid	Monthly	1.65E-01	4.88E-02	4.65E-03	9.53E-02
118841	125-127	1978	CPP	Liquid	Monthly	2.59E-01	8.48E-02	2.79E-02	3.29E-01
118841	125-127	1978	CPP	Liquid	Monthly	3.03E-01	8.00E-02	2.78E-02	3.48E-01
118841	125-127	1978	CPP	Liquid	Monthly	1.59E-01	4.85E-02	4.81E-02	9.92E-01
118841	121-123	1978	CPP	Air	Monthly	8.31E-03	5.14E-03	5.13E-03	9.98E-01
118841	128-129	1978	CPP	Solid	Monthly	6.43E+01	6.31E+01	6.30E+01	9.99E-01
118841	128-129	1978	CPP	Solid	Monthly	8.41E+01	8.13E+01	8.12E+01	9.99E-01
118841	128-129	1978	CPP	Solid	Monthly	1.00E+02	9.91E+01	9.90E+01	9.99E-01
118841	128-129	1978	CPP	Solid	Monthly	3.11E+01	2.02E+01	2.05E+01	1.01E+00
118841	128-129	1978	CPP	Solid	Monthly	2.94E+00	6.20E-01	7.84E-01	1.26E+00
118841	128-129	1978	CPP	Solid	Monthly	1.23E+01	2.91E+00	3.85E+00	1.32E+00
118841	121-123	1978	CPP	Air	Monthly	5.50E-03	1.37E-03	2.09E-03	1.53E+00
118841	121-123	1978	CPP	Air	Monthly	1.82E-02	6.04E-03	9.30E-03	1.54E+00
118841	125-127	1978	CPP	Liquid	Monthly	5.44E-02	6.28E-03	1.10E-02	1.75E+00
118841	121-123	1978	CPP	Air	Monthly	7.56E-03	2.15E-03	3.84E-03	1.78E+00
118841	125-127	1978	CPP	Liquid	Monthly	3.23E-01	4.46E-02	9.23E-02	2.07E+00
118841	121-123	1978	CPP	Air	Monthly	6.88E-03	2.15E-03	9.42E-03	4.38E+00
118841	121-123	1978	CPP	Air	Monthly	3.09E-04	3.08E-04	5.78E-03	1.88E+01
118841	128-129	1978	CPP	Solid	Annual	2.56E+03	1.04E+03	5.22E+02	5.03E-01
118841	125-127	1978	CPP	Liquid	Annual	2.02E+00	5.90E-01	1.32E+00	2.23E+00
118841	121-123	1978	CPP	Air	Annual	8.57E-02	2.38E-02	7.01E-02	2.94E+00
139839	43-44	1971	TRA	Liquid	Monthly	9.40E-01	1.11E+00	1.01E+00	9.13E-01
139839	43-44	1971	TRA	Liquid	Monthly	3.21E-01	8.20E-01	8.32E-01	1.01E+00
139839	43-44	1971	TRA	Liquid	Annual	1.01E+01	1.46E+01	1.84E+00	1.27E-01
140037	59	1973	TAN	Solid	Monthly	2.53E+01	6.20E-02	2.42E-01	3.90E+00
140037	59	1973	TAN	Solid	Monthly	1.32E+00	3.10E-01	1.21E+00	3.90E+00
140037	44	1973	TRA	Liquid	Monthly	4.41E-01	1.92E-01	1.10E+00	5.74E+00
140037	44	1973	TRA	Liquid	Annual	3.93E+00	4.23E+00	3.36E+00	7.94E-01
140037	59	1973	TAN	Solid	Annual	5.54E+01	1.30E+00	5.15E+00	3.96E+00
140039	166	1974	CFA	Liquid	Monthly	2.09E-03	1.97E-03	3.64E-03	1.84E+00
140039	85	1974	TAN	Solid	Monthly	6.92E+01	2.47E+00	8.60E+00	3.47E+00
140039	85	1974	TAN	Solid	Monthly	3.96E+00	9.30E-01	3.63E+00	3.90E+00
140039	85	1974	TAN	Solid	Monthly	7.19E+00	1.69E+00	6.60E+00	3.90E+00
140039	166	1974	CFA	Liquid	Annual	1.09E-02	1.72E-02	3.64E-03	2.12E-01
140039	85	1974	TAN	Solid	Annual	2.24E+02	1.54E+01	5.92E+01	3.85E+00
140040	117	1975	TAN	Solid	Monthly	3.82E+00	2.98E+00	2.55E-02	8.57E-03
140040	125-126	1975	CPP	Liquid	Monthly	1.83E-03	1.36E-02	2.97E-03	2.18E-01
140040	125-126	1975	CPP	Liquid	Monthly	3.96E-02	8.48E-02	1.99E-02	2.35E-01
140040	128-130	1975	CPP	Solid	Monthly	2.70E+00	3.00E-03	1.20E-03	4.00E-01
140040	125-126	1975	CPP	Liquid	Monthly	5.66E-02	5.65E-02	2.51E-02	4.44E-01
140040	125-126	1975	CPP	Liquid	Monthly	3.11E-02	3.88E-02	2.65E-02	6.84E-01
140040	117	1975	TAN	Solid	Monthly	5.94E+00	1.40E+00	5.45E+00	3.91E+00
140040	128-130	1975	CPP	Solid	Monthly	2.48E+01	2.48E+01	2.48E+01	1.00E+00
140040	128-130	1975	CPP	Solid	Monthly	4.68E+01	4.68E+01	4.68E+01	1.00E+00
140040	128-130	1975	CPP	Solid	Monthly	4.96E+01	4.95E+01	4.96E+01	1.00E+00
140040	122	1975	CPP	Air	Monthly	7.48E-03	4.20E-03	4.97E-03	1.18E+00
140040	128-130	1975	CPP	Solid	Monthly	3.19E+02	1.64E-01	2.04E-01	1.24E+00
140040	125-126	1975	CPP	Liquid	Monthly	4.06E-02	2.98E-02	5.09E-02	1.71E+00
140040	122	1975	CPP	Air	Monthly	2.72E-03	1.08E-03	1.88E-03	1.74E+00

**NOTICE:** This report has been reviewed to identify and redact any information that is protected by the Privacy Act 5 U.S.C. § 552a and has been cleared for distribution.

<b>Effective Date:</b> 01/11/2017	<b>Revision No.</b> 0 (Draft)	<b>Document No./Description:</b> SCA-TR-2017-SEC001	<b>Page No.</b> 37 of 39
--------------------------------------	----------------------------------	--	-----------------------------

SRDB Ref #	Page #	Year	Area	Type of Waste	Type of Data	Measured Cs-137 Activity	Measured Sr-90 Activity	Measured Ru-106 Activity	[Ru-106/Sr-90] Divided by Table 5-22 Ratio of 1.0
140040	119	1975	CFA	Liquid	Monthly	5.09E-03	1.30E-03	2.42E-03	1.87E+00
140040	119	1975	CFA	Liquid	Monthly	4.73E-04	8.98E-04	1.73E-03	1.93E+00
140040	122	1975	CPP	Air	Monthly	2.01E-02	7.45E-03	2.20E-02	2.95E+00
140040	128-130	1975	CPP	Solid	Monthly	1.00E+01	4.20E-01	1.40E+00	3.33E+00
140040	125-126	1975	CPP	Liquid	Monthly	2.10E-02	2.16E-02	9.79E-02	4.54E+00
140040	122	1975	CPP	Air	Monthly	6.03E-02	1.37E-02	6.56E-02	4.79E+00
140040	122	1975	CPP	Air	Monthly	1.10E-01	4.13E-02	2.30E-01	5.57E+00
140040	119	1975	CFA	Liquid	Monthly	2.54E-03	4.98E-04	6.26E-03	1.26E+01
140040	122	1975	CPP	Air	Monthly	3.43E-02	1.34E-02	1.74E-01	1.30E+01
140040	117	1975	TAN	Solid	Annual	9.76E+00	4.37E+00	5.48E+00	1.25E+00
140040	128-130	1975	CPP	Solid	Annual	5.03E+02	1.71E+02	1.72E+02	1.01E+00
140040	125-126	1975	CPP	Liquid	Annual	4.78E-01	4.60E-01	5.19E-01	1.13E+00
140040	119	1975	CFA	Liquid	Annual	3.29E-02	1.33E-02	2.09E-02	1.57E+00
140040	122	1975	CPP	Air	Annual	5.97E-01	2.43E-01	7.94E-01	3.27E+00

**NOTICE:** This report has been reviewed to identify and redact any information that is protected by the Privacy Act 5 U.S.C. § 552a and has been cleared for distribution.

<b>Effective Date:</b> 01/11/2017	<b>Revision No.</b> 0 (Draft)	<b>Document No./Description:</b> SCA-TR-2017-SEC001	<b>Page No.</b> 38 of 39
--------------------------------------	----------------------------------	--	-----------------------------

## ATTACHMENT C. DOCUMENTS AND DATA USED TO EVALUATE ACTINIDE/Sr-90 AND ACTINIDE/Cs-137 VALUES

**Table C.1. Documents and Data Used to Evaluate Pu-238/Sr-90 and Pu-238/Cs-137 Values**

SRDB Ref #	Page #	Year	Area	Type of Waste	Type of Data	Measured Cs-137 Activity	Measured Sr-90 Activity	Measured Pu-238 Activity	Pu-238/Sr-90	[Pu-238/Sr-90] Divided by Table 5-22 Ratio of 0.015
87191	154-155	1985	CPP	Air	Monthly	3.39E-04	3.70E-05	4.80E-16	1.30E-11	8.65E-10
87191	167-168	1985	CPP	Stack	Monthly	1.78E-04	6.47E-04	1.13E-07	1.75E-04	1.16E-02
87191	154-155	1985	CPP	Air	Monthly	2.65E-04	2.15E-05	1.19E-07	5.53E-03	3.69E-01
87191	167-168	1985	CPP	Stack	Monthly	2.65E-04	2.15E-05	1.19E-07	5.53E-03	3.69E-01
87191	154-155	1985	CPP	Air	Monthly	1.78E-04	6.47E-06	1.13E-07	1.75E-02	1.16E+00
87191	154-155	1985	CPP	Air	Monthly	2.19E-04	6.53E-06	3.17E-07	4.85E-02	3.24E+00
87191	167-168	1985	CPP	Stack	Monthly	2.19E-04	6.53E-06	3.17E-07	4.85E-02	3.24E+00
87191	154-155	1985	CPP	Air	Monthly	2.62E-04	9.92E-06	5.27E-07	5.31E-02	3.54E+00
87191	167-168	1985	CPP	Stack	Monthly	2.62E-04	9.92E-06	5.27E-07	5.31E-02	3.54E+00
87191	157-159	1985	CPP	Liquid	Monthly	2.12E-03	1.22E-03	1.18E-04	9.67E-02	6.45E+00
87191	157-159	1985	CPP	Liquid	Monthly	3.82E-03	6.90E-04	8.61E-05	1.25E-01	8.32E+00
87191	154-155	1985	CPP	Air	Monthly	2.05E-04	4.84E-06	6.08E-07	1.26E-01	8.37E+00
87191	167-168	1985	CPP	Stack	Monthly	2.05E-04	4.84E-06	6.08E-07	1.26E-01	8.37E+00
87191	157-159	1985	CPP	Liquid	Monthly	3.10E-03	1.18E-03	1.86E-04	1.58E-01	1.05E+01
87191	157-159	1985	CPP	Liquid	Monthly	5.45E-03	7.04E-03	1.53E-03	2.17E-01	1.45E+01
87191	157-159	1985	CPP	Liquid	Monthly	4.28E-03	9.89E-04	3.14E-04	3.17E-01	2.12E+01
87191	157-159	1985	CPP	Liquid	Monthly	2.88E-03	4.09E-03	1.34E-03	3.28E-01	2.18E+01
87191	154-155	1985	CPP	Air	Annual	4.41E-03	1.89E-03	6.56E-05	3.47E-02	2.31E+00
87191	167-168	1985	CPP	Stack	Annual	4.41E-03	1.89E-03	6.56E-05	3.47E-02	2.31E+00
87191	157-159	1985	CPP	Liquid	Annual	2.82E-02	2.16E-02	3.77E-03	1.74E-01	1.16E+01
118841	128-129	1978	CPP	Solid	Monthly	8.41E+01	8.13E+01	2.80E-03	3.45E-05	2.30E-03
118841	128-129	1978	CPP	Solid	Monthly	3.11E+01	2.02E+01	1.38E-02	6.83E-04	4.55E-02
118841	121-123	1978	CPP	Air	Monthly	5.50E-03	1.37E-03	5.95E-06	4.35E-03	2.90E-01
118841	128-129	1978	CPP	Solid	Monthly	2.94E+00	6.20E-01	8.22E-03	1.33E-02	8.84E-01
118841	121-123	1978	CPP	Air	Monthly	8.31E-03	5.14E-03	8.35E-05	1.62E-02	1.08E+00
118841	121-123	1978	CPP	Air	Monthly	7.56E-03	2.15E-03	4.28E-05	1.99E-02	1.33E+00
118841	121-123	1978	CPP	Air	Monthly	1.82E-02	6.04E-03	1.35E-04	2.24E-02	1.49E+00
118841	121-123	1978	CPP	Air	Monthly	6.88E-03	2.15E-03	5.57E-05	2.69E-02	1.73E+00
118841	121-123	1978	CPP	Air	Monthly	3.09E-04	3.08E-04	9.88E-05	3.21E-01	2.14E+01
118841	128-129	1978	CPP	Solid	Annual	2.56E+03	1.04E+03	3.02E-02	2.91E-05	1.94E-03
118841	121-123	1978	CPP	Air	Annual	8.57E-02	2.38E-02	9.14E-04	3.83E-02	2.56E+00
136493	288	1993	D&D	Solid	Monthly	2.88E-02	1.44E-01	3.64E-11	2.53E-10	1.68E-08
136493	288	1993	D&D	Solid	Annual	4.78E-01	8.27E-01	3.64E-11	4.40E-11	2.93E-09
140040	122	1975	CPP	Air	Monthly	1.10E-01	4.13E-02	7.79E-06	1.89E-04	1.26E-02
140040	122	1975	CPP	Air	Monthly	2.01E-02	7.45E-03	4.67E-05	6.27E-03	4.18E-01
140040	125-126	1975	CPP	Liquid	Monthly	3.11E-02	3.88E-02	3.32E-04	8.56E-03	5.71E-01
140040	122	1975	CPP	Air	Monthly	3.43E-02	1.34E-02	1.26E-04	9.36E-03	6.24E-01
140040	122	1975	CPP	Air	Monthly	6.03E-02	1.37E-02	1.65E-04	1.20E-02	8.03E-01
140040	122	1975	CPP	Air	Monthly	2.72E-03	1.08E-03	1.33E-05	1.23E-02	8.21E-01
140040	125-126	1975	CPP	Liquid	Monthly	5.66E-02	5.65E-02	7.88E-04	1.40E-02	9.31E-01
140040	122	1975	CPP	Air	Monthly	7.48E-03	4.20E-03	5.87E-05	1.40E-02	9.32E-01
140040	125-126	1975	CPP	Liquid	Monthly	3.96E-02	8.48E-02	2.23E-03	2.63E-02	1.75E+00
140040	125-126	1975	CPP	Liquid	Monthly	4.06E-02	2.98E-02	5.84E-03	1.96E-01	1.31E+01
140040	125-126	1975	CPP	Liquid	Monthly	1.83E-03	1.36E-02	3.08E-03	2.26E-01	1.51E+01
140040	125-126	1975	CPP	Liquid	Monthly	2.10E-02	2.16E-02	6.54E-03	3.03E-01	2.02E+01
140040	122	1975	CPP	Air	Annual	5.97E-01	2.43E-01	1.63E-03	6.71E-03	4.47E-01
140040	125-126	1975	CPP	Liquid	Annual	4.78E-01	4.60E-01	4.69E-02	1.02E-01	6.80E+00

**Table C.2. Documents and Data Used to Evaluate Am-241/Sr-90 and Am-241/Cs-137 Values**

SRDB Ref #	Page #	Year	Area	Type of Waste	Type of Data	Measured Cs-137 Activity	Measured Sr-90 Activity	Measured Am-241 Activity	Am-241/Sr-90	[Am-241/Sr-90] Divided by Table 5-22 Ratio of 1.4E-4
136493	288	1993	D&D	Solid	Monthly	2.88E-02	1.44E-01	1.82E-10	1.26E-09	9.02E-06
87469	18	1982	CPP	Liquid	Monthly	1.48E-05	4.90E-04	5.33E-06	1.09E-02	7.77E+01
87469	18	1982	CPP	Liquid	Monthly	3.20E-04	9.10E-05	9.47E-06	1.04E-01	7.43E+02
87469	18	1982	CPP	Liquid	Monthly	2.40E-04	8.60E-05	1.42E-05	1.65E-01	1.18E+03
87469	18	1982	CPP	Liquid	Monthly	4.18E-04	1.15E-05	2.60E-06	2.26E-01	1.61E+03
87469	18	1982	CPP	Liquid	Monthly	8.22E-04	4.90E-05	3.59E-05	7.33E-01	5.23E+03
87106	66	1974	TRA	Liquid	Monthly	6.90E-06	1.60E-06	1.80E-01	1.13E+05	8.04E+08
136493	288	1993	D&D	Solid	Annual	4.78E-01	8.27E-01	1.82E-10	2.20E-10	1.57E-06
88069	391-394	1991	TRA	Solid	Annual	5.19E+01	3.58E-01	3.26E-06	9.08E-06	6.49E-02

**NOTICE:** This report has been reviewed to identify and redact any information that is protected by the Privacy Act 5 U.S.C. § 552a and has been cleared for distribution.

<b>Effective Date:</b> 01/11/2017	<b>Revision No.</b> 0 (Draft)	<b>Document No./Description:</b> SCA-TR-2017-SEC001	<b>Page No.</b> 39 of 39
--------------------------------------	----------------------------------	--	-----------------------------

**Table C.3. Documents and Data Used to Evaluate U-234/Sr-90 and U-234/Cs-137 Values**

SRDB Ref #	Page #	Year	Area	Type of Waste	Type of Data	Measured Cs-137 Activity	Measured Sr-90 Activity	Measured U-234 Activity	U-234/Sr-90	[U-234/Sr-90] Divided by Table 5-22 Ratio of 1.4E-3
136493	288	1993	D&D	Solid	Monthly	2.46E-01	5.82E-01	1.78E-10	3.06E-10	2.19E-07
136493	288	1993	D&D	Solid	Monthly	2.88E-02	1.44E-01	1.64E-07	1.14E-06	8.12E-04
140040	128-130	1975	CPP	Solid	Monthly	3.19E+02	1.64E-01	1.76E-04	1.08E-03	7.69E-01
87191	157-159	1985	CPP	Liquid	Monthly	5.46E-03	7.04E-03	3.78E-04	5.37E-02	3.84E+01
87191	157-159	1985	CPP	Liquid	Monthly	4.28E-03	9.89E-04	1.24E-04	1.25E-01	8.96E+01
87191	157-159	1985	CPP	Liquid	Monthly	2.88E-03	4.09E-03	5.55E-04	1.36E-01	9.69E+01
87191	157-159	1985	CPP	Liquid	Monthly	3.10E-03	1.18E-03	4.26E-04	3.61E-01	2.58E+02
87191	157-159	1985	CPP	Liquid	Monthly	3.82E-03	6.90E-04	4.65E-04	6.74E-01	4.81E+02
87191	157-159	1985	CPP	Liquid	Monthly	2.12E-03	1.22E-03	1.16E-03	9.51E-01	6.79E+02
136493	288	1993	D&D	Solid	Annual	4.78E-01	8.27E-01	1.64E-07	1.98E-07	1.42E-04
140040	128-130	1975	CPP	Solid	Annual	5.03E+02	1.71E+02	1.76E-04	1.03E-06	7.33E-04
87191	157-159	1985	CPP	Liquid	Annual	2.82E-02	2.16E-02	4.99E-03	2.31E-01	1.65E+02

**NOTICE:** This report has been reviewed to identify and redact any information that is protected by the Privacy Act 5 U.S.C. § 552a and has been cleared for distribution.