

Prevalence of SARS-CoV-2 Infection among Children and Adults in 15 US Communities, 2021¹

Jessica Justman, Timothy Skalland, Ayana Moore, Christopher I. Amos, Mark A. Marzinke, Sahar Z. Zangeneh, Colleen F. Kelley, Rebecca Singer, Stockton Mayer, Yael Hirsch-Moverman, Susanne Doblecki-Lewis, David Metzger, Elizabeth Barranco, Ken Ho, Ernesto T.A. Marques, Margaret Powers-Fletcher, Patricia J. Kissinger, Jason E. Farley, Carrie Knowlton, Magdalena E. Sobieszczyk, Shobha Swaminathan, Domonique Reed, Jean De Dieu Tapsoba, Lynda Emel, Ian Bell, Krista Yuhas, Leah Schrupf, Laura Mkumba, Jontraye Davis, Jonathan Lucas, Estelle Piwowar-Manning, Shahnaz Ahmed, and the CoVPN 5002 COMPASS Study Team



Medscape CME Activity

In support of improving patient care, this activity has been planned and implemented by Medscape, LLC and Emerging Infectious Diseases. Medscape, LLC is jointly accredited with commendation by the Accreditation Council for Continuing Medical Education (ACCME), the Accreditation Council for Pharmacy Education (ACPE), and the American Nurses Credentialing Center (ANCC), to provide continuing education for the healthcare team.

Medscape, LLC designates this Journal-based CME activity for a maximum of 1.00 **AMA PRA Category 1 Credit(s)**[™]. Physicians should claim only the credit commensurate with the extent of their participation in the activity.

Successful completion of this CME activity, which includes participation in the evaluation component, enables the participant to earn up to 1.0 MOC points in the American Board of Internal Medicine's (ABIM) Maintenance of Certification (MOC) program. Participants will earn MOC points equivalent to the amount of CME credits claimed for the activity. It is the CME activity provider's responsibility to submit participant completion information to ACCME for the purpose of granting ABIM MOC credit.

All other clinicians completing this activity will be issued a certificate of participation. To participate in this journal CME activity: (1) review the learning objectives and author disclosures; (2) study the education content; (3) take the post-test with a 75% minimum passing score and complete the evaluation at <http://www.medscape.org/journal/eid>; and (4) view/print certificate. For CME questions, see page 411.

NOTE: It is Medscape's policy to avoid the use of brand names in accredited activities. However, in an effort to be as clear as possible, the use of brand names should not be viewed as a promotion of any brand or as an endorsement by Medscape of specific products.

Release date: January 23, 2024; Expiration date: January 23, 2025

Learning Objectives

Upon completion of this activity, participants will be able to:

- Distinguish the rate of seropositivity against SARS-CoV-2 in a community-based sample of US residents in 2021.
- Evaluate variables which affected the rate of seropositivity against SARS-CoV-2.
- Assess the prevalence and clinical implications of positive PCR tests for SARS-CoV-2 in the current study.
- Analyze study participants' willingness to receive the COVID-19 vaccine.

CME Editor

P. Lynne Stockton Taylor, VMD, MS, ELS(D), Technical Writer/Editor, Emerging Infectious Diseases. *Disclosure: P. Lynne Stockton Taylor, VMD, MS, ELS(D), has no relevant financial relationships.*

CME Author

Charles P. Vega, MD, Health Sciences Clinical Professor of Family Medicine, University of California, Irvine School of Medicine, Irvine, California. *Disclosure: Charles P. Vega, MD, has the following relevant financial relationships: served as a consultant or advisor for Boehringer Ingelheim; GlaxoSmithKline; Johnson & Johnson Services, Inc.*

Authors

Jessica Justman, MD; Timothy Skalland, PhD; Ayana Moore, PhD; Christopher Amos, PhD; Mark Marzinke, PhD; Sahar Zangeneh, PhD; Colleen Kelley, MD; Rebecca Singer, DNP; Yael Hirsch-Moverman, PhD; Susanne Doblecki-Lewis, MD; David Metzger, PhD; Elizabeth Barranco, MD; Ken Ho, MD; Ernesto Marques, MD, PhD; Margaret Powers-Fletcher, PhD; Patricia Kissinger, PhD; Jason Farley, PhD; Carrie Knowlton, DNP; Magdalena Sobieszczyk, MD; Shobha Swaminathan, MD; Domonique Reed, MPH; Jean De Dieu Tapsoba, PhD; Lynda Emel, PhD; Ian Bell, BA; Krista Yuhas, MS; Leah Schrupf, MSc; Laura Mkumba, MSc; Jontraye Davis, MHA; Jonathan Lucas, MPH; Estelle Piwowar-Manning, BS, MT; Shahnaz Ahmed, BS.

During January–August 2021, the Community Prevalence of SARS-CoV-2 Study used time/location sampling to recruit a cross-sectional, population-based cohort to estimate SARS-CoV-2 seroprevalence and nasal swab sample PCR positivity across 15 US communities. Survey-weighted estimates of SARS-CoV-2 infection and vaccine willingness among participants at each site were compared within demographic groups by using linear regression models with inverse variance weighting. Among 22,284 persons ≥ 2 months of age and older, median prevalence of infection (prior, active, or both) was 12.9% across sites and similar across age groups. Within each site, average prevalence of infection was 3 percentage points higher for Black than White persons and average vaccine willingness was 10 percentage points lower for Black than White persons and 7 percentage points lower for Black persons than for persons in other racial groups. The higher prevalence of SARS-CoV-2 infection among groups with lower vaccine willingness highlights the disparate effect of COVID-19 and its complications.

As of May 2023, ≈ 104 million confirmed SARS-CoV-2 cases had been reported in the United States (1). That case count is certainly an underestimate, given the occurrence of asymptomatic disease; self-testing and unreported cases; and limited initial diagnostic testing, especially among children. The true case count may be gleaned from SARS-CoV-2 seroprevalence studies. In most parts of the world, including the United States, many prevalence estimates have been based on convenience samples of adults (2), including samples from healthcare settings (3) or from US commercial laboratories (4). According to those approaches, seroprevalence has varied from 10% to 58%, depending on the type of serologic test used, calendar time in relation to the pandemic, population sampling strategy, and characteristics of the population (e.g., demographic, clinical, and healthcare seeking) (3,4).

Population-based seroprevalence estimates from nonclinical general populations have been few (5),

reflecting challenges posed by the COVID-19 pandemic with regard to rigorous sampling strategies for reaching representative populations (6–9). Some strategies have used social media to recruit diverse populations but lacked a well-defined sampling frame (10), and regional studies with random sampling schemes have lacked diverse participation (11–13). In addition, many seroprevalence studies have not included detailed demographic and socioeconomic information about the participants despite the association of those factors with SARS-CoV-2 infection (14–17).

We report the results of the Community Prevalence of SARS-CoV-2 Study (COMPASS), which was conducted in the first half of 2021 to assess prevalence of prior and current SARS-CoV-2 infection among the general population of adults and children in largely urban communities surrounding established clinical research sites in the United States. We based determination of infection on antibody and PCR positivity. We also describe the population-level factors associated with increased risk for SARS-CoV-2 infection. COMPASS used time/location sampling (TLS) as a rigorous method of nonprobability sampling of public venues near the participating research sites to enroll persons from the community (18,19). To improve the representativeness of the general population sample given the mobility restrictions of the pandemic, COMPASS also recruited a clinical cohort from outpatient healthcare facilities and a nursing home cohort from residential facilities for older adults.

Methods

Study Design and Setting

COMPASS (ClinicalTrials.gov identifier NCT04658121, <https://clinicaltrials.gov>) was a cross-sectional survey sponsored by the National Institute of Allergy and Infectious Diseases (NIAID)–funded COVID-19 Prevention Network (20). A total of 68 existing US-based

Author affiliations: Columbia University, New York, New York, USA (J. Justman, Y. Hirsch-Moverman, M.E. Sobieszczyk, D. Reed); Fred Hutchinson Cancer Center, Seattle, Washington, USA (T. Skalland, S.Z. Zangeneh, J. De Dieu Tapsoba, L. Emel, I. Bell, K. Yuhas); FHI 360, Durham, North Carolina, USA (A. Moore, L. Schrupf, L. Mkumba, J. Davis, J. Lucas); Baylor College of Medicine, Houston, Texas, USA (C.I. Amos); Johns Hopkins University, Baltimore, Maryland, USA (M.A. Marzinke, J.E. Farley, E. Piwowar-Manning, S. Ahmed); Emory University, Atlanta, Georgia, USA (C.F. Kelley); University of Illinois Chicago, Chicago, Illinois, USA (R. Singer, S. Mayer); University of Miami, Miami, Florida, USA (S. Doblecki-Lewis); University of Pennsylvania, Philadelphia, Pennsylvania, USA (D. Metzger); Ponce

Health Sciences University, Ponce, Puerto Rico (E. Barranco); University of Pittsburgh, Pittsburgh, Pennsylvania, USA (K. Ho, E.T.A. Marques); University of Cincinnati, Cincinnati, Ohio, USA (M. Powers-Fletcher); Tulane University, New Orleans, Louisiana, USA (P.J. Kissinger); University of Colorado, Aurora, Colorado, USA (C. Knowlton); Rutgers Medical School, Newark, New Jersey, USA (S. Swaminathan); RTI International, Research Triangle Park, North Carolina, USA (S.Z. Zangeneh)

DOI: <https://doi.org/10.3201/eid3002.230863>

¹Preliminary results from this study were presented virtually at the 2022 Conference on Retroviruses and Opportunistic Infections, February 2022 (abstract 46).

NIAID clinical research sites (hereafter called sites) were invited to conduct the study with the goal of enhancing representative sampling in multiple regions across the United States. The 15 participating sites (Appendix, <https://wwwnc.cdc.gov/EID/article/30/2/23-0863-App1.pdf>) were located in the southern, midwestern, mid-Atlantic, and northeastern United States as well as Puerto Rico.

Ethics approvals were obtained from a central (Advarra) and participating sites' institutional review boards (Appendix). All participants or their representatives provided written informed consent or assent for persons 7–17 years of age with parental/guardian consent; remote electronic consent for persons 15–17 years of age was permissible for parents not physically present. For adults with mental incapacity, consent was provided by a legally authorized representative.

Participants and Sampling

The study population consisted of adults and children recruited from the catchment area of each site (18). TLS was used to recruit participants in the community and outpatient clinic cohorts, and because of pandemic restrictions to access, convenience sampling was used to recruit the nursing home cohort. Ethnographic mapping of community venues in each catchment area (e.g., supermarkets, parks, commercial streets, and interviews with venue managers when relevant) identified time venues (i.e., times when venues were available and likely to have foot traffic). Clinical venues where persons visiting outpatient facilities were recruited to the clinical cohort were distinct from community venues. The catchment area of each site was defined as the postal (ZIP) code of the site plus all contiguous ZIP codes, encompassing a population of $\approx 150,000$ (Appendix).

Research teams visited time venues randomly selected on the basis of sampling frames updated weekly by each site and attempted to recruit all persons at each time venue (Appendix). They collected the number of persons approached versus enrolled at each time venue, and the resulting ratio was used to adjust for nonresponse. Adults ≥ 18 years of age and children ≥ 2 months of age who were recruited in the community were eligible for the community cohort; adults who were recruited at a selected outpatient healthcare facility were eligible to join the clinical cohort; and those recruited at a senior living facility were eligible to join the nursing home cohort. For all cohorts (community, outpatient, senior living facility), potential participants were excluded if they had previously enrolled in the study or if there was any condition that, in the opinion of the study staff,

would interfere with achieving the study objectives. COVID-19 vaccination was not exclusionary. Study participants received a cash gift card consistent with local standards as compensation for time and effort.

We collected demographic, socioeconomic, geographic, clinical, and household SARS-CoV-2 exposure and infection history information from each consenting participant (or a parent of participants < 9 years of age) via an interviewer-administered questionnaire conducted in English or Spanish in a relatively private location at the venue (e.g., to the side of the tent). The questionnaire assessed COVID-19 symptoms and willingness to receive an approved COVID-19 vaccine. At the end of March 2021, the questionnaire was updated to allow participants to self-report whether they had received an approved vaccine (i.e., a US Food and Drug Administration-authorized COVID-19 vaccine).

Participants provided whole blood samples via venipuncture and mid-turbinate samples via nasal swabbing. For participants ≤ 2 years of age, blood was collected by heel or finger stick, and dried blood spots were prepared at study sites. Serum was isolated from blood, and serologic evidence of prior SARS-CoV-2 infection was evaluated by using the Abbott Architect SARS-CoV-2 IgG nucleocapsid antibody assay (Abbott Diagnostics), for which, according to manufacturer claims, specificity was 99.6% and sensitivity was 100% (21). To reduce interassay and interlaboratory variability, testing was performed at a central laboratory (Quest Diagnostics) by use of a single assay. To determine the prevalence of active SARS-CoV-2 infections, PCR analysis was performed on midturbinate nasal swab samples by using validated, approved assays (Appendix). SARS-CoV-2 PCR results, but not serologic results, were returned to study participants.

Outcomes

The primary outcome was the proportion of participants with prior SARS-CoV-2 infection, based on presence of SARS-CoV-2 IgG nucleocapsid antibody (Ab+). A secondary outcome was the proportion of participants with active SARS-CoV-2 infection, based on results of SARS-CoV-2 RNA testing (PCR+). A combined outcome of the proportion with prior or active SARS-CoV-2 infection was based on having a status of Ab+, PCR+, or both. Vaccine willingness was defined as the proportion of participants who reported on a 5-point scale that they were likely or very likely to receive an approved vaccine or responded that they had already received an approved vaccine. The proportion of Ab+ participants who reported being asymptomatic was based on the number of

participants who responded no to all 13 yes/no questions about experiencing upper respiratory or systemic symptoms since November 2019. The proportion of PCR+ participants who reported being asymptomatic was similarly based on the number who responded no when asked about each of the same 13 symptoms currently or in the past 14 days (Appendix).

Power Calculation and Statistical Analyses

The target sample size for each of the 4 target age groups (<18, 18–39, 40–59, ≥60 years) in the community cohort was 730, based on a prespecified margin of error of 2.5% for seroprevalence of <5% and a 5% margin of error for seroprevalence of 10%–25% (18). Each site therefore sought to enroll 2,920 participants from community venues, as well as an additional 500 adults from outpatient health facilities and 500 adults from nursing homes.

We constructed estimates for the 3 laboratory-based prevalence outcomes as well as vaccine willingness for each of the 15 clinical research site communities overall; for each target age group; and by sex assigned at birth (female, male), race (Black, White, other), and ethnicity (Hispanic, non-Hispanic). Other race categories were Asian, Native Hawaiian or other Pacific Islander, and other, as well as those answering don't know/not sure and prefer not to answer. Prevalence by gender identity was not estimated because 68% of enrolled participants did not respond to a question about current gender identity. Survey weights accounted for sampling design (18), nonresponse, and, per data from the American Community Survey (<https://data.census.gov/table/?d=ACS%205-Year%20Estimates%20Detailed%20Tables>), poststratification (Appendix).

We limited analyses of cross-site summary measures of the combined endpoint (Ab+, PCR+, or both)

and vaccine willingness to sites that had enrolled ≥25 participants in the specific demographic group and described those measures as medians with interquartile ranges (IQRs). We separately compared combined prevalence outcome (active infection, prior infection, or both) and vaccine willingness within demographic groups (age, sex, race, and ethnicity) by using linear regression models with inverse variance weighting. We used a robust heteroskedasticity-consistent type sandwich variance estimation approach to account for potential nonconstant error variances in the weighted linear regression models that included the proportion (e.g., vaccine willingness) as an outcome and the demographic variable of interest as a covariate while accounting for site.

Results

We enrolled 26,201 adults and children in the study from January 12, 2021, through August 12, 2021; median recruitment period per site was 164 days (range 84–199 days, IQR 150–185 days). During that time, ≈69,000 persons were approached from a cumulative total of ≥450 unique community venues surrounding the 15 clinical research sites; 22,284 (≈32%) participants enrolled (Figure 1), resulting in a median enrollment per community of 1,246 (range 508–2,924, IQR 997–1,682) participants. Sites intended to enroll one quarter of the community cohort into each of the 4 age groups; however, only 2,113 (9.5%) enrolled participants were <18 years, and the median number of children per site was 48 (IQR 24–100). Most sites enrolled similar proportions of male and female participants from community venues (Appendix Table 2). A total of 3,111 participants were enrolled in the clinical cohort and 806 in the nursing home cohort (Appendix Tables 1, 3, 4, Figures 1, 2).

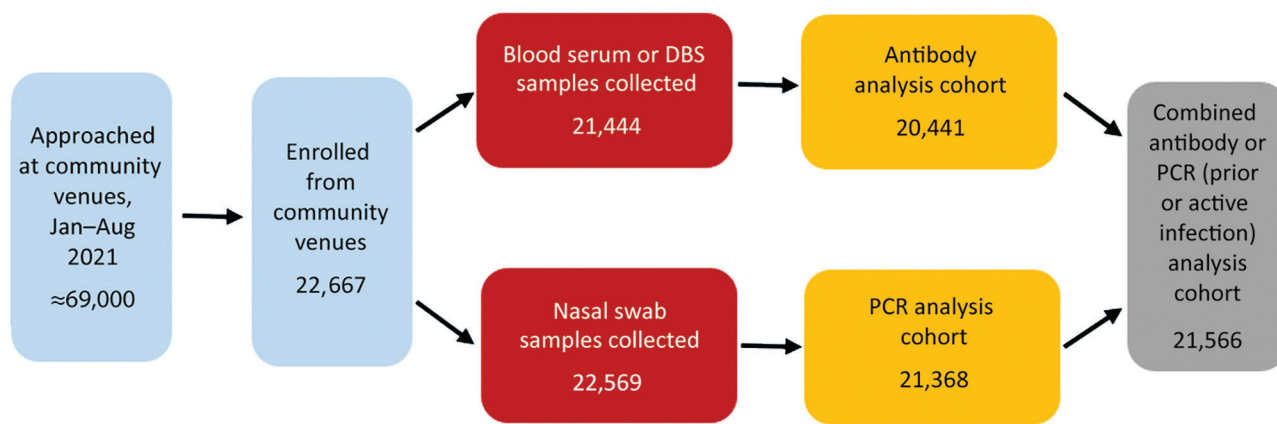


Figure 1. Participant enrollment from community venues in study of prevalence of SARS-CoV-2 infection among children and adults in 15 US communities (COMPASS 2021). Each site completed community enrollment from a median of 30 (interquartile range 24–35) venues. At each site, 80% of community enrollments were completed at a median of 13 (interquartile range 8.5–15.5) venues. DBS, dried blood spot.

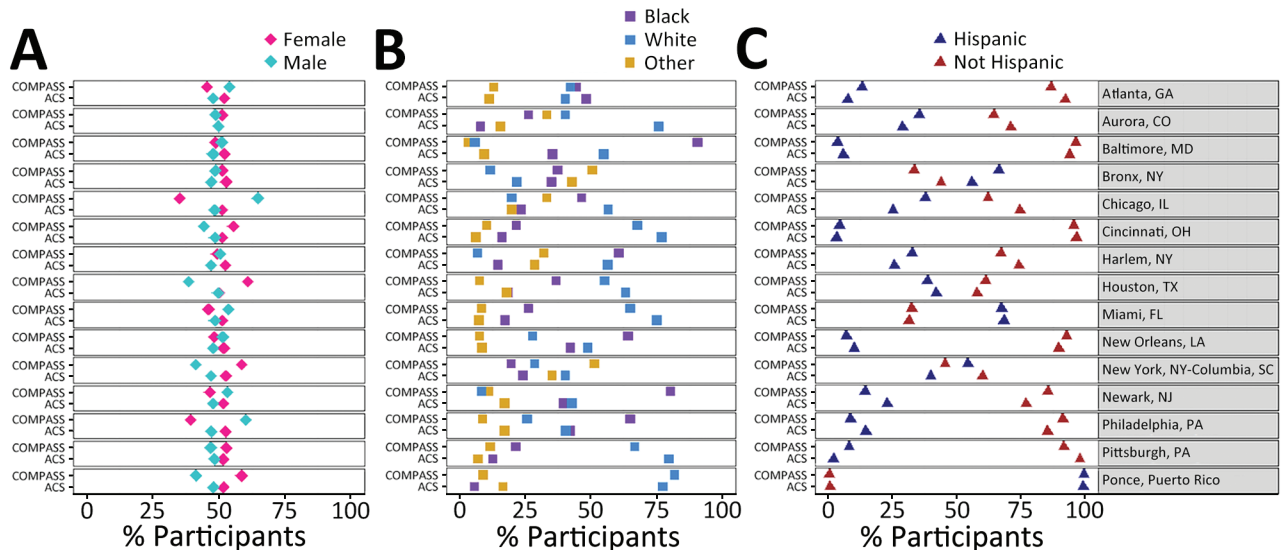


Figure 2. Demographic characteristics of community cohort (n = 21,189) in study of prevalence of SARS-CoV-2 infection among children and adults in 15 US communities (COMPASS 2021) and the 2020 US Census American Community Survey (<https://www.census.gov/programs-surveys/acs>) for each site. A) sex; B) race; C) ethnicity.

A total of 22,284 participants of the targeted 43,800 were enrolled from community venues; of those, 95% provided a blood sample for SARS-CoV-2 antibody testing and 99% provided a nasal swab sample for SARS-CoV-2 PCR testing (Figure 1). Complete data were available for 21,189 (95%) community cohort enrollees for analysis of a combined endpoint of Ab+, PCR+, or both (i.e., evidence of prior or active infection). The remainder of the findings about the community cohort pertain to the group of 21,189.

The unadjusted demographic profile for sex and ethnicity of the community cohort was similar to the estimated demographic profiles for most communities according to corresponding county-level data from the American Community Survey (Figure 2); however, the profile by race differed at several sites. In addition, prevalence of race varied widely, from 9% to 89% for Black persons (median 37% [IQR 24%–62%] across sites) and from 6% to 80% for White persons (median 28% [IQR 15%–60%] across sites). Hispanic ethnicity varied from 3% to 98% (median 33% [IQR 9%–47%] across sites).

Median seropositivity of the community cohort (Appendix Table 5, Figure 3), determined according to 2,272 Ab+ participants, was 12.4% (IQR 9.1%–14%); seropositivity was similar for the clinical cohort (11.3% [IQR 7.7%–15.5%]) but lower for the nursing home cohort (3.3% [IQR 2.4%–7.7%]). Of note, 50% of the nursing home cohort participants were recruited in Puerto Rico, where seroprevalence for all age groups was 3%–5% (Figure 3, panel B). The median overall prevalence of active infection (PCR positivity) in the community cohort across all sites (Appendix Table 5, Figure 3),

determined according to 189 PCR+ participants, was 0.8% (IQR 0.2%–1.5%). A total of 64 participants enrolled in COMPASS were both PCR+ and Ab+ (52 from the community cohort and 12 from the clinical cohort).

In the community cohort, overall median prevalence across all 15 site-level estimates of the combined endpoint, based on PCR+ or Ab+ status, was 12.9% (range 4.9%–18%, IQR 9.2%–14%) (Figure 3, panel A). Although prevalence varied widely, when we looked at demographic differences within each site, we found no difference in average prevalence of prior or active infection by age, whether considering the 4 age groups at all sites (Figure 3, panel A) or comparing children (<18 years of age) with adults (≥18 years of age) at each of the 10 sites that enrolled ≥25 children (Figure 3, panel B). We also found no difference in average prevalence by participant sex or ethnicity (Figure 3, panel A). Within each site, however, the average prevalence estimate for Black participants was 3 percentage points higher than for White participants ($p < 0.01$) and 2.4 percentage points higher than for those with race identified as other ($p = 0.11$). Among participants ≥18 years of age, we found a nonsignificant association between a higher prevalence of active or prior SARS-CoV-2 infection and a lower level of attained education (Appendix Figure 4). We found no association between COVID-19 and income level; however, many (32.8%) participants reported their household income as don't know or prefer not to answer (data not shown).

About half of seropositive persons in the community cohort reported that they had not ever experienced COVID-19 symptoms (median 50.0%

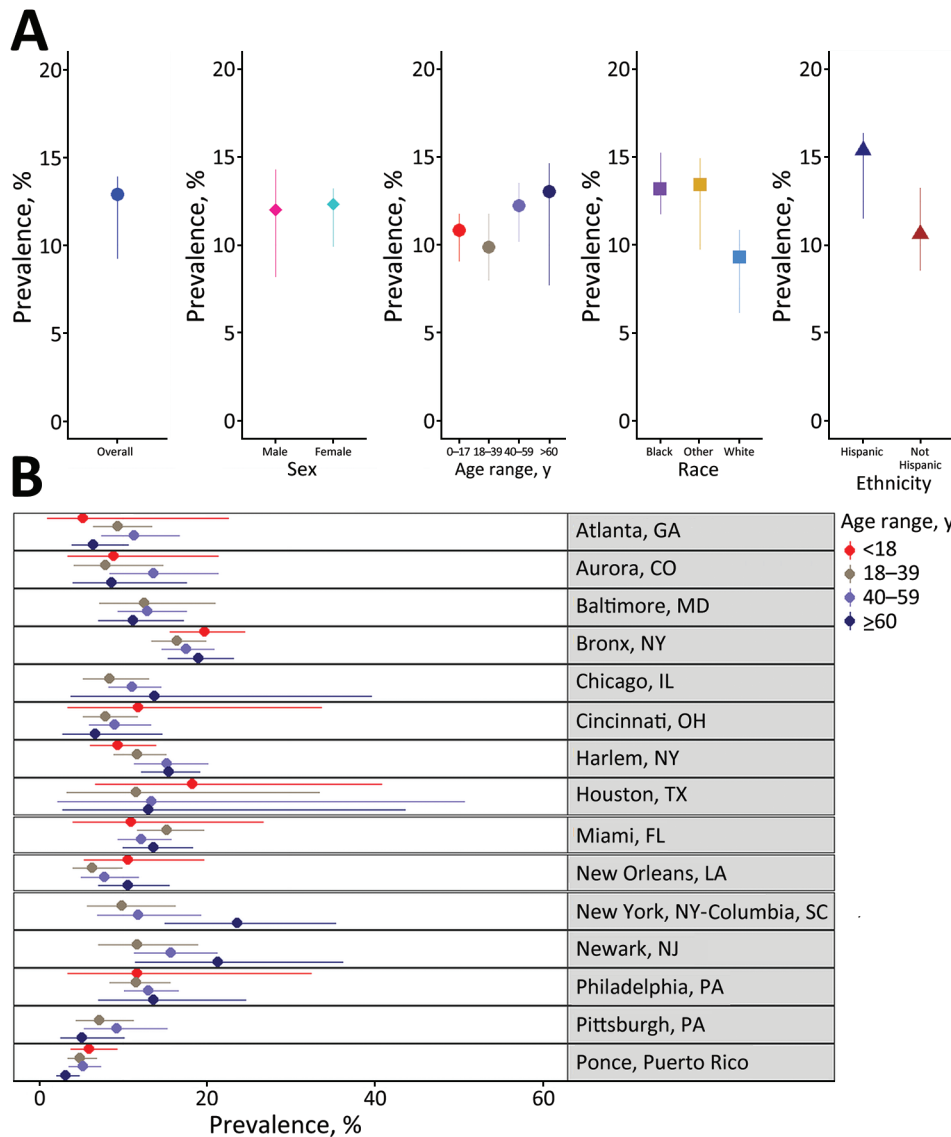


Figure 3. Prevalence of active or prior COVID-19 infection in 15 US communities, community cohort (n = 21,189), COMPASS 2021. A) By demographic characteristic across all sites. B) By age and site. Error bars indicate interquartile ranges. Note: Analysis of age limited to communities with >25 children who had complete data.

[IQR 45.3%–63.8%]; data not shown). Similarly, about half of PCR+ persons in the community cohort reported not having experienced symptoms within the 14 days before their participation in the survey (median 52.4% [IQR 50.0%–62.4%]; data not shown). In contrast, among the seronegative persons in the community cohort, a median of 80.9% (IQR 75.7%–83.4%; data not shown) reported they had not ever experienced COVID-19 symptoms. Similarly, a median of 79.8% of PCR-negative persons (IQR 75.7–83.1%; data not shown) in the community cohort reported not having experienced symptoms within the 14 days before the survey.

In a separate analysis of self-reported PCR and antibody results among the 21,940 persons who enrolled and tested antibody negative in COMPASS

(18,629 from the community cohort), prevalence of a self-reported prior positive COVID-19 test (nasal swab sample) was 4.9% (n = 1,067) and prevalence of a self-reported prior positive antibody test was 2.4% (n = 526) (data not shown). By contrast, among the 2,792 who enrolled and tested antibody positive in COMPASS (2,380 from the community cohort), prevalence of a self-reported prior positive COVID-19 test (nasal swab sample) was 33.4% (n = 933) and prevalence of a self-reported prior positive antibody test was 7.9% (n = 221) (data not shown).

Overall, across 15 site-level estimates, the median percentage of persons in the community cohort who reported being willing to receive a COVID-19 vaccine was 78% (IQR 72%–82%); the percentage was higher among participants ≥60 years of age (median 89%,

IQR 84%–92%) compared with those 18–39 years of age (median 74%, IQR 67%–83%) and 40–59 years of age (median 76%, IQR 74%–81%) (Figure 4). The median percentage of participants who reported being willing to receive a vaccine was 71.4% (IQR 64.8%–76.3%) for Black, 78% (IQR 68.8%–82.5%) for other race, and 84.2% (IQR 73.6%–87.0%) for White participants (Appendix Table 6). We found no differences in willingness to receive a vaccine by sex or ethnicity across the sites. When looking at demographic differences within each site, we found that vaccine willingness among those ≥ 60 years of age was an average of 10 percentage points higher than among those 40–59 ($p < 0.01$) years of age, 11 percentage points higher than those 18–39 ($p < 0.01$) years of age, and 22 percentage points higher than those < 18 years of age ($p < 0.01$). Similarly, the average difference among participants who reported being willing to receive a vaccine was 10 percentage points lower for Black compared with White participants ($p < 0.01$) and 7 percentage points lower for Black participants than for persons in other racial groups ($p < 0.01$).

Discussion

COMPASS, a population-based cross-sectional serosurvey, enrolled $\approx 22,000$ adults and children from community venues in 15 largely urban US settings in the first half of 2021 and found that the overall prevalence of prior and active SARS-CoV-2 infection was 12.9%. TLS, typically used to recruit hard-to-reach populations (19), was an innovative way to randomly sample populations representative of diverse communities amid pandemic restrictions to access and

movement, based on demographic comparisons with the American Community Survey. Contrasting with initial reports of COVID-19 (22–24), population-based prevalence did not vary by age, indicating that acquisition was similar for all age groups. In addition, despite prevalence of prior or active COVID-19 being higher among Black participants, fewer Black participants in the sampled communities were willing to receive an approved COVID-19 vaccine compared with participants who were from White or other racial groups, a finding that may have magnified the disparate burden of COVID-19 and associated outcomes in these communities.

Compared with our findings, studies conducted in healthcare settings may have arrived at higher estimates of COVID-19 prevalence (3,4), reflecting the symptomatic status, healthcare access, and healthcare-seeking behavior of clinical populations. For example, a commercial laboratory seroprevalence study conducted in the United States during the second half of 2021 assessed at 4-week intervals convenience samples of blood specimens collected for clinical testing and found an overall US seroprevalence of 33.5% in December 2021 (4). Similar to our findings with regard to age, the study of commercial laboratory samples also found that seroprevalence among children and adults did not differ. Whether for COVID-19 or other widespread outbreaks, such as mpox, seroprevalence estimates from population-based studies that include those who are less likely to engage in care, combined with estimates from healthcare settings, may offer the most comprehensive picture of outbreak effects at that point in time.

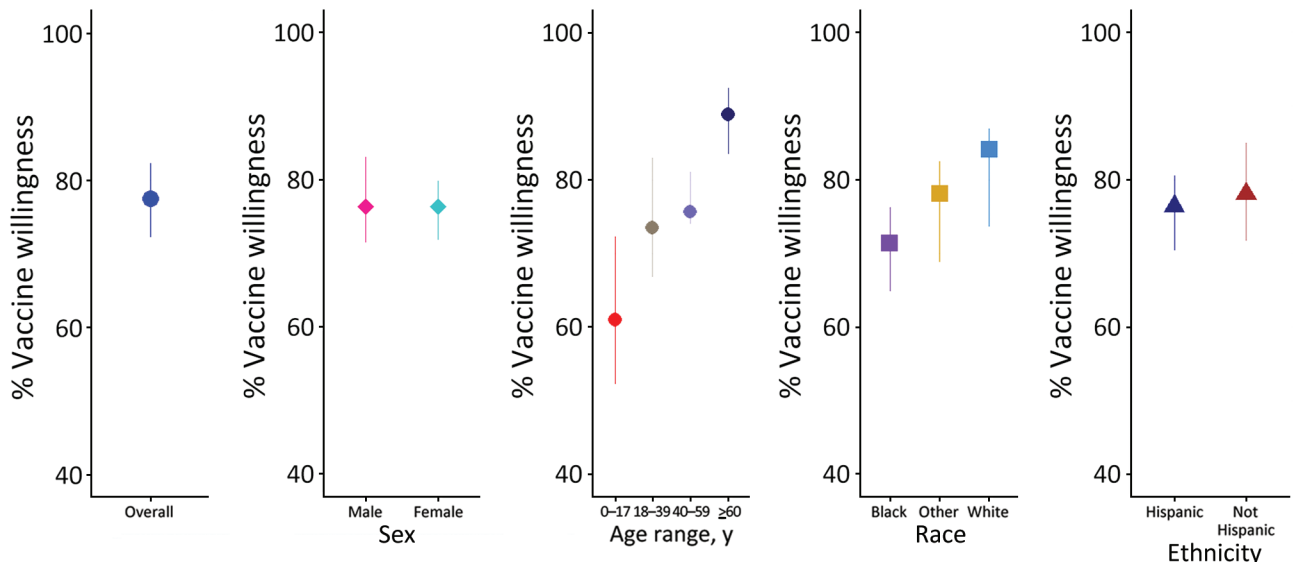


Figure 4. Prevalence of COVID-19 vaccine willingness in 15 US communities, by demographic characteristics, all sites, community cohort, COMPASS 2021. Note: Analysis of age limited to communities with > 25 children who had complete data.

COMPASS found that willingness to receive a vaccine during the first half of 2021, during the earliest stages of vaccine availability in the United States, was 10 percentage points lower among Black participants and 7 percentage points lower among other race participants than among White participants. Monthly telephone surveys of immunization practices, conducted during December 2020–November 2021, found a similar level of racial disparity in April 2021 (25). By November 2021, racial disparities in COVID-19 vaccine uptake in the United States were no longer evident (26); nonetheless, 1 year later, by December 2022, Black race and Hispanic ethnicity remained associated with higher rate ratios of age-adjusted hospitalization and death compared with White race (26,27), indicating that vaccine uptake alone did not explain disparities in outcomes.

Strengths of our study included collection of biological samples and detailed demographic, behavioral, and self-reported clinical data from randomly sampled persons from the general population, including children. COMPASS used a centrally managed approach to TLS to ensure a participant population that reflected the communities surrounding clinical research sites participating in COVID-19 vaccine trials. The weekly systematic updating of community venue sampling frames was a novel way to adapt to changing COVID-19 guidelines and restrictions as well as to fluctuating weather (18). The prevalence of active infection was based on validated laboratory assays performed on approved platforms. Although we did not assess serologic evidence of vaccine immunity (SARS-CoV-2 spike antibody), the serologic assessment of prior infection through a single assay conducted at a centralized laboratory yielded rigorous seroprevalence findings.

Limitations of our study included conducting it in the first half of 2021, just before the Delta variant became dominant in the United States, when vaccines were becoming available, home-based rapid test kits were not yet widely available, and even PCR testing was often not easily available. Although enrollment targets, especially for children, were not fully achieved, the study had sufficient power to compare both seroprevalence and the combined endpoint of seroprevalence, PCR positivity, or both, by age group. The results do not reflect the entire US population but do reflect persons who were well enough to attend commonly frequented venues in diverse, largely urban communities surrounding the participating clinical research sites, who represent those who had more exposure to COVID-19 compared with those who were homebound. Sampling largely urban

settings was relevant, given that the US population is 80% urban (28) and that, globally, COVID-19 cases had a large effect in urban settings, especially in the earlier stages of the epidemic (29). Serologic testing may have underestimated seroprevalence because of either absent or low titers after a mild infection (30) or waning antibody titers after a distant (>6 months) infection (31). Last, recall and social desirability biases may have affected the accuracy of replies to some sections of the questionnaire.

In our population-based survey, we used TLS to recruit members of the general population who were relatively hard to reach because of the status of the COVID-19 pandemic. Our findings demonstrate that prior and active SARS-CoV-2 infection varied widely by community but, contrasting with initial reports, not by age. Half of Ab+ and PCR+ participants reported no symptoms, underscoring the limitations of case-based reporting and the potential for asymptomatic transmission (32,33). Our findings of higher prevalence of prior or active COVID-19 among persons who were less willing to get vaccinated highlight the value of tailoring public health efforts to the communities most likely to continue to experience disparate effects COVID-19 and its complications.

Acknowledgments

We thank all the COMPASS study participants as well as the key study staff and their institutions for their contributions to the COMPASS study: The Ponce de Leon Center CRS, Atlanta, GA: Aryn Prince, Jessica Swiniarski, Santiago Tovar; Johns Hopkins CRS Baltimore, MD: Kelly Lowenson, Jess LaRicci, Adam Bocek, Woudase Gallo; Bronx Prevention Research Center CRS, New York, NY: Nandita Sugandhi, Rita Sondengam, Saranya Naidu, Kyle Eiffler; UIC Project Wish Clinical Research Site (CRS), Chicago, IL: Scott Lea, Taylor Ellis; Cincinnati CRS, Cincinnati, OH: Delia P. Miller, Sylvere Mukunzi, Sydnei Simpson, Madison Riddell, Kristin N. Weghorn, Justin Benoit, Diego F. Cuadros; Harlem Prevention Center CRS, New York, NY: Sharon B Mannheimer, Julie Franks, Avelino Jun Loquere, Kamesha Martin, Ibrahima Cisse, Vidhi Patel, Elvis Ndansi; Baylor College of Medicine, Houston, TX: Hana M. El Sahly, Maria Carmenza Mejia, Abiodun Oluyomi, Winnifred Hamilton, Catherine Mary Healy, Merin Thomas, Pedro A. Piedra, Kathryn Edwards, Gloria Liao, Dakai Zhu, Sarah Selleck; University of Miami, IDRU at Jackson Memorial Hospital CRS, Miami, FL: Stefani Butts, Mariano Kanamori, Zinzi Bailey; New Orleans Adolescent Trials Unit CRS, New Orleans, LA: Julie H. Hernandez, Susan E. Abdalian, Ratnayake, Susan Abdalian, Norine Schmidt; Columbia P&S CRS, New York, NY: Jorge Benitez, Henry Peralta,

Jackie Wu, Ariana Pazmino, Renee Roberts, Tae Y. Kim, Marvin Castellon, Jonathan Kunkel-Jure, Sade Tukuru, Mascha Elskamp; New Jersey Medical School CRS, Newark, NJ; Rondalya Deshields, Christie Lyn Costanza, Naema Milead, Zoraida Cruz-Barahona, Charles Oh, Sivanne Mendelson, Briana Brodie, Megan Shanahan, Ashley Zenerovitz, Pansy Law, Andrew Morero, Xena Agbolou, Travis Love; Penn Prevention CRS, Philadelphia, PA; Juan Diego Ramirez, Victoria Milano, Meredith Page Miller; University of Pittsburgh, Pittsburgh, PA; Stacey Edick, Jim Gavel, Jenn Oakley, Angel Servillo, Justin Mondry, Linda Frank, Todd Bear, Wendy King, Dara Mendez, Gabby Yearwood; St. Louis University VTEU, CAIMED-PHSU, Ponce, Puerto Rico; Lydier Dedos, Nancy Jimenez, Velma Franceschini, Frances Figueroa, Luisa I. Alvarado, Odette Oliveri.

This research was supported by the National Institutes of Health (Office of the Director, National Institute of Allergy and Infectious Disease, National Institute on Drug Abuse, National Institute of Mental Health, and the Eunice Kennedy Shriver National Institute of Child Health and Human Development). All authors were supported by UM1AI068619 except as follows: UM1AI068617 (T.S., S.Z., J.D.T., L.E., I.B., and K.Y.), UM1AI068613 (M.A.M., E.P.-M., and S.A.); and T32AI114398 (D.R). The content is solely the responsibility of the authors and does not necessarily represent the official views of the National Institutes of Health.

About the Author

Dr. Justman is an infectious disease specialist, global health expert, and professor of medicine in epidemiology and senior technical director at ICAP, a global public health center at the Mailman School of Public Health at Columbia University. Her research interests include HIV prevention, care, and treatment in sub-Saharan Africa and the United States as well as COVID-19.

References

- Centers for Disease Control and Prevention. Trends in United States COVID-19 hospitalizations, deaths, emergency department (ED) visits, and test positivity by geographic area [cited 2023 May 2]. https://covid.cdc.gov/covid-data-tracker/#trends_weeklydeaths_select_00
- Akinbami LJ, Kruszon-Moran D, Wang CY, Storandt RJ, Clark J, Riddles MK, et al. SARS-CoV-2 serology and self-reported infection among adults—National Health and Nutrition Examination Survey, United States, August 2021–May 2022. *MMWR Morb Mortal Wkly Rep.* 2022;71:1522–5. <https://doi.org/10.15585/mmwr.mm7148a4>
- Anand S, Montez-Rath M, Han J, Bozeman J, Kerschmann R, Beyer P, et al. Prevalence of SARS-CoV-2 antibodies in a large nationwide sample of patients on dialysis in the USA: a cross-sectional study. *Lancet.* 2020;396:1335–44. [https://doi.org/10.1016/S0140-6736\(20\)32009-2](https://doi.org/10.1016/S0140-6736(20)32009-2)
- Clarke KEN, Jones JM, Deng Y, Nycz E, Lee A, Iachan R, et al. Seroprevalence of infection-induced SARS-CoV-2 antibodies—United States, September 2021–February 2022. *MMWR Morb Mortal Wkly Rep.* 2022;71:606–8. <https://doi.org/10.15585/mmwr.mm7117e3>
- Sullivan PS, Siegler AJ, Shioda K, Hall EW, Bradley H, Sanchez T, et al. Severe acute respiratory syndrome coronavirus 2 cumulative incidence, United States, August 2020–December 2020. *Clin Infect Dis.* 2022;74:1141–50. <https://doi.org/10.1093/cid/ciab626>
- Blumberg SJ, Parker JD, Moyer BC. National Health Interview Survey, COVID-19, and online data collection platforms: adaptations, tradeoffs, and new directions. *Am J Public Health.* 2021;111:2167–75. <https://doi.org/10.2105/AJPH.2021.306516>
- Paulose-Ram R, Graber JE, Woodwell D, Ahluwalia N. The National Health and Nutrition Examination Survey (NHANES), 2021–2022: adapting data collection in a COVID-19 environment. *Am J Public Health.* 2021;111:2149–56. <https://doi.org/10.2105/AJPH.2021.306517>
- Ward JA, Stone EM, Mui P, Resnick B. Pandemic-related workplace violence and its impact on public health officials, March 2020–January 2021. *Am J Public Health.* 2022;112:736–46. <https://doi.org/10.2105/AJPH.2021.306649>
- Shook-Sa BE, Boyce RM, Aiello AE. Estimation without representation: early severe acute respiratory syndrome coronavirus 2 seroprevalence studies and the path forward. *J Infect Dis.* 2020;222:1086–9. <https://doi.org/10.1093/infdis/jiaa429>
- Kreuter F, Barkay N, Bilinski A, Bradford A, Chiu S, Eliat R, et al. Partnering with a global platform to inform research and public policy making: what needs to be in place to make a global COVID-19 survey work? *Surv Res Methods.* 2020;14:159–63.
- Snyder T, Ravenhurst J, Cramer EY, Reich NG, Balzer L, Alfandari D, et al. Serological surveys to estimate cumulative incidence of SARS-CoV-2 infection in adults (Sero-MAss study), Massachusetts, July–August 2020: a mail-based cross-sectional study. *BMJ Open.* 2021;11:e051157. <https://doi.org/10.1136/bmjopen-2021-051157>
- Cardenas VM, Kennedy JL, Williams M, Nembhard WN, Zohoori N, Du R, et al. State-wide random seroprevalence survey of SARS-CoV-2 past infection in a southern US state, 2020. *PLoS One.* 2022;17:e0267322. <https://doi.org/10.1371/journal.pone.0267322>
- Cowgill KD, Erosheva EA, Elder A, Miljacic L, Buskin S, Duchin JS. Anti-SARS-CoV-2 seroprevalence in King County, WA—cross-sectional survey, August 2020. *PLoS One.* 2022;17:e0272783. <https://doi.org/10.1371/journal.pone.0272783>
- Etti M, Fofie H, Razai M, Crawshaw AF, Hargreaves S, Goldsmith LP. Ethnic minority and migrant underrepresentation in Covid-19 research: causes and solutions. *EClinicalMedicine.* 2021;36:100903. <https://doi.org/10.1016/j.eclinm.2021.100903>
- Karmakar M, Lantz PM, Tipirneni R. Association of social and demographic factors with COVID-19 incidence and death rates in the US. *JAMA Netw Open.* 2021;4:e2036462. <https://doi.org/10.1001/jamanetworkopen.2020.36462>
- Lackland DT, Sims-Robinson C, Jones Buie JN, Voeks JH. Impact of COVID-19 on clinical research and inclusion of diverse populations. *Ethn Dis.* 2020;30:429–32. <https://doi.org/10.18865/ed.30.3.429>
- Aliseda-Alonso A, Lis SB, Lee A, Pond EN, Blauer B, Rutkow L, et al. The missing COVID-19 demographic data: a statewide analysis of COVID-19-related demographic

- data from local government sources and a comparison with federal public surveillance data. *Am J Public Health*. 2022;112:1161-9. <https://doi.org/10.2105/AJPH.2022.306892>
18. Zangeneh SZ, Skalland T, Yuhas K, Emel L, Tapsoba JD, Reed D, et al. Adaptive time location sampling for COMPASS, a SARS-CoV-2 prevalence study in fifteen diverse communities in the United States. *Epidemiology*. 2023. Epub ahead of print <https://doi.org/10.1097/EDE.0000000000001705>
 19. Muhib FB, Lin LS, Stueve A, Miller RL, Ford WL, Johnson WD, et al.; Community Intervention Trial for Youth Study Team. A venue-based method for sampling hard-to-reach populations. *Public Health Rep*. 2001;116 (Suppl 1):216-22. <https://doi.org/10.1093/phr/116.S1.216>
 20. NIH launches clinical trials network to test COVID-19 vaccines and other prevention tools. July 8, 2020 [cited 2022 Sep 22]. <https://www.nih.gov/news-events/news-releases/nih-launches-clinical-trials-network-test-covid-19-vaccines-other-prevention-tools>
 21. Food and Drug Administration. EUA authorized serology test performance 2022 [cited 2023 Sep 30]. <https://www.fda.gov/medical-devices/covid-19-emergency-use-authorizations-medical-devices/eua-authorized-serology-test-performance>
 22. Sinaei R, Pezeshki S, Parvaresh S, Sinaei R. Why COVID-19 is less frequent and severe in children: a narrative review. *World J Pediatr*. 2021;17:10-20. <https://doi.org/10.1007/s12519-020-00392-y>
 23. Mehta NS, Mytton OT, Mullins EWS, Fowler TA, Falconer CL, Murphy OB, et al. SARS-CoV-2 (COVID-19): what do we know about children? a systematic review. *Clin Infect Dis*. 2020;71:2469-79. <https://doi.org/10.1093/cid/ciaa556>
 24. Zimmermann P, Curtis N. COVID-19 vaccination coverage, by race and ethnicity – National Immunization Survey Adult COVID Module, United States, December 2020–November 2021. *Arch Dis Child*. 2020 Dec 1 [Epub ahead of print]. <https://doi.org/10.1136/archdischild-2020-320338>
 25. Kriss JL, Hung MC, Srivastava A, Black CL, Lindley MC, Lee JT, et al. COVID-19 Vaccination Coverage, by Race and Ethnicity - National Immunization Survey Adult COVID Module, United States, December 2020–November 2021. *MMWR Morb Mortal Wkly Rep*. 2022;71:757-63. <https://doi.org/10.15585/mmwr.mm7123a2>
 26. Booth A, Reed AB, Ponzo S, Yassaee A, Aral M, Plans D, et al. Population risk factors for severe disease and mortality in COVID-19: a global systematic review and meta-analysis. *PLoS One*. 2021;16:e0247461. <https://doi.org/10.1371/journal.pone.0247461>
 27. Centers for Disease Control and Prevention. Hospitalization and death by race/ethnicity 2022 [cited 2023 Feb 15]. <https://www.cdc.gov/coronavirus/2019-ncov/covid-data/investigations-discovery/hospitalization-death-by-race-ethnicity.htm>
 28. US Census Bureau. 2020 Census urban areas facts [cited 2023 May 3]. <https://www.census.gov/programs-surveys/geography/guidance/geo-areas/urban-rural/2020-ua-facts.html>
 29. Guterres A. COVID-19 in an urban world [cited 2023 May 3]. <https://www.un.org/en/coronavirus/covid-19-urban-world#:~:text=Urban%20areas%20are%20ground%20zero, sanitation%20services%2C%20and%20other%20 challenges>
 30. Buss LF, Prete CA Jr, Abraham CMM, Mendrone A Jr, Salomon T, de Almeida-Neto C, et al. Three-quarters attack rate of SARS-CoV-2 in the Brazilian Amazon during a largely unmitigated epidemic. *Science*. 2021;371:288-92. <https://doi.org/10.1126/science.abe9728>
 31. Peluso MJ, Takahashi S, Hakim J, Kelly JD, Torres L, Iyer NS, et al. SARS-CoV-2 antibody magnitude and detectability are driven by disease severity, timing, and assay. *Sci Adv*. 2021;7:eabh3409. <https://doi.org/10.1126/sciadv.abh3409>
 32. Johansson MA, Quandelacy TM, Kada S, Prasad PV, Steele M, Brooks JT, et al. SARS-CoV-2 transmission from people without COVID-19 symptoms. *JAMA Netw Open*. 2021;4:e2035057. <https://doi.org/10.1001/jamanetworkopen.2020.35057>
 33. Ma Q, Liu J, Liu Q, Kang L, Liu R, Jing W, et al. Global percentage of asymptomatic SARS-CoV-2 infections among the tested population and individuals with confirmed COVID-19 diagnosis: a systematic review and meta-analysis. *JAMA Netw Open*. 2021;4:e2137257. <https://doi.org/10.1001/jamanetworkopen.2021.37257>

Address for correspondence: Jessica Justman, Columbia University, 722 W 168th St, Rm 1315, New York, NY 10032, USA; email: jj2158@cumc.columbia.edu

Prevalence of SARS-CoV-2 Infection among Children and Adults in 15 US Communities

Appendix

Research sites: The Ponce de Leon Center Clinical Research Site (CRS), Atlanta, GA; Children's Hospital Colorado CRS, Aurora, CO; Johns Hopkins CRS, Baltimore, MD; Bronx Prevention Research Center CRS, NY, NY; UIC Project Wish CRS, Chicago, IL; Cincinnati CRS, Cincinnati, OH; Harlem Prevention Center CRS, NY, NY; Baylor College of Medicine, Houston, TX; University of Miami Infectious Disease Research Unit at Jackson Memorial Hospital CRS, Miami, FL); New Orleans Adolescent Trials Unit CRS, New Orleans, LA; Columbia P&S CRS, NY, NY; New Jersey Medical School CRS, Newark, NJ; Penn Prevention CRS, Philadelphia, PA; University of Pittsburgh CRS, Pittsburgh, PA; St. Louis University VTEU, CAIMED-PHSU, Ponce, Puerto Rico.

Recruitment: Information on the venue-day-times (VDTs) attempted and attended were documented and uploaded as end-of-day information. Field teams were instructed to use their judgement when recruiting from venues and to include all individuals present. Depending on the size of the crowd, staff greeted and attempted to engage with all individuals who came into the recruitment space and inquired about the individual's interest in learning about and enrolling in the study. If the numbers of individuals were too high to do this in a meaningful way, staff were instructed to decide at the beginning of and throughout the time slot, to greet each nth individual who came into the recruitment space and inquire about their interest in hearing about the study. Staff documented this sampling interval. The number of individuals approached was defined as the number to whom staff were able to deliver part of a standardized prescreening message about COMPASS and included those who declined further engagement and those who agreed to provide informed consent. Staff used a hand counter to track this number and documented at the end of each VDT the number approached and the number enrolled.

Lab methods: To determine the prevalence of active SARS-CoV-2 infections, PCR analysis was performed on mid-turbinate nasal swabs using one of the following platforms, if available: Abbott Molecular/RealTime SARS-CoV-2 assay; Roche/ Cobas®SARS-CoV-2 test; or Hologic Aptima SARS CoV-2 assay. If one of the above assays was not available, the study team reviewed and approved alternative PCR-based platforms. Alternative platforms were used at the following sites: Atlanta (BakoDx Coronavirus (COVID-19) SARS-CoV-2 Test), Baylor (CDC 2019-Novel Coronavirus Real-Time RT-PCR Diagnostic Panel), Penn (Cepheid Xpert® Xpress SARS-CoV-2 test), and Tulane (ThermoFisher Scientific TaqPath™ COVID-19 Combo Kit).

To determine the prevalence of prior SARS-CoV-2 infections, antibody testing was performed at a single laboratory. During the planning phase of the study, in the second half of 2020, there were few laboratories that had the capacity to perform the projected testing of 43,800 samples. Based on laboratory infrastructure, testing was performed at Quest Diagnostics (Horsham, PA) using the Abbott SARS-CoV-2 IgG NC AB assay, a two-step immunoassay that detects IgG antibodies to SARS-CoV-2 via chemiluminescent microparticle immunoassay technology; a chemiluminescent signal to cutoff index greater than or equal to 1.40 was considered positive (1). While the assay has demonstrated high positive percent agreement with PCR results as soon as 14 days after onset of symptoms (100%, 95% CI: 95.9; 100.0), antibody signal has also been shown to decrease over time (2,3).

Statistical analysis plan: The protocol SAP is provided and includes a description of the construction of the design-based weights for primary and secondary analyses; many of these details have been recently reported (4). Domain estimates were used for all of the subgroup analyses. Additional analyses within this paper, not included in the SAP, were as follows:

To estimate the prevalence of a combined active or prior SARS-CoV-2 infection based on results of SARS-CoV-2 RNA testing and IgG seropositivity testing.

Combined active or prior infection was defined as a participant having either SARS-CoV-2 infection or IgG seropositivity (they must have had at least one of the results recorded). Survey weighted estimates were used to obtain the prevalence of individuals with combined active or prior infection. Survey weights were used to reflect the sampling design for each age strata and post-stratified to American Community Survey census data on known demographic

variables. The design-based estimates of the mean and their corresponding standard errors were used to construct 95% confidence intervals.

To assess the association between demographic factors with SARS-CoV-2 infection and seroprevalence in the general population using all research sites.

We first obtained survey weighted estimates and corresponding standard errors for the combined active or prior infection prevalence by demographic group for each site. For each group (e.g., race) we then used those estimates and standard errors in an inverse-variance weighted linear regression that had the demographic variable as a covariate and accounts for research site. Finally, we used a heteroscedasticity-consistent standard error (HC1) to test and estimate differences between groups using *t*-intervals.

To assess vaccine willingness among the general population.

Vaccine willingness was defined as participants responding “Likely” or “Very Likely” to receive an approved vaccine for SARS-CoV-2 or responding that they have already received an approved vaccine. This was assessed as a 5-point Likert scale response (with additional option of “already received”) on the questionnaire administered to enrolled participants. Survey weighted estimates were used to obtain the proportion of individuals willing to receive an approved vaccine for SARS-CoV-2. Survey weights were used to reflect the sampling design for each age strata and post-stratified to census data on known demographic variables. The design-based estimates of the mean and their corresponding standard errors were used to construct 95% confidence intervals.

To assess the proportion of reported asymptomatic participants among those with active or prior infection in the general population.

Among those individuals with active SARS-CoV-2 infection, we used the proportion not reporting symptoms based on Yes/No responses to questions about whether they currently were experiencing or in the past 14 days had experienced any of 13 upper respiratory or systemic symptoms. Participants with missing symptom responses were included in the denominator.

Among those individuals with prior SARS-CoV-2 infection, we used the proportion not reporting symptoms based on a Yes/No response to a question on ever having COVID-19

symptoms since November 2019. Participants with missing or unsure symptom response were included in the denominator.

Survey weighting methodology was not used for either of these estimates.

To assess the proportion of individuals with prior COVID-19 testing among those with prior infection in the general population.

For the analysis of self-reported PCR and Ab testing performed prior to and separately from the COMPASS study, we included all study participants in the denominator, regardless of whether responses to questions on prior PCR and or Ab testing indicated they had never had a test or if the response was missing. Survey weighting methodology was not used for these estimates.

Survey sampling weights:

Sampling design weights were constructed for each site from probabilistic sampling of available days and times for community venues and outpatient facilities, based on the inverse of the inclusion probabilities derived in Section 2.2 of the SAP as base weights.

Non-response was estimated at each venue and outpatient health facility based on the number of people who were approached and the number enrolled by the research team.

Post-stratification adjustments were done only for the community cohort through a raking process (marginal adjustment rather than joint adjustment) using the *survey* package in R. Post-stratification adjustments were not done for the outpatient clinical cohort or the nursing home cohort due to unavailability of census data on these target populations. Individuals were formed into cells based on known demographic information. In each adjustment cell, the weighted estimates of the demographic variables were calculated using the existing survey weights and set to match the known population total using the most recent 5-year (2015-2019) county-level estimates from the American Community Survey (ACS) (<https://data.census.gov/table/?d=ACS%205-Year%20Estimates%20Detailed%20Tables>). If a catchment area cut across county lines, the estimates of all the counties in the catchment area were used for each post-stratification factor: age group, sex, race, and ethnicity. For by-age analyses, the adjustment cells were only matched to the known margins for that particular age category and did not use age as a further post-stratification factor. When using race as a post-

stratification factor, we used the three categories of Black, White and Other defined previously by collapsing race categories from the ACS.

If the selection probabilities or estimated response propensities were close to zero or one, the resulting design-based estimators were likely to be unstable. For this reason, trimming was done by censoring the weights at $\pm 4 \times \text{IQR}$ for a given analysis.

Additional Methods notes: Catchment areas: Two sites (New Orleans and Miami) recruited in zip codes beyond the contiguous zip codes surrounding the zip code of the clinical research site because the immediate surroundings had few residential areas.

Removal of records: A total of 456 participant records from the Tulane University site (Tulane) were removed from the analytic dataset after the Tulane Institutional Review Board (IRB) made a determination pertaining to certain data from the Tulane site. The IRB determined that data were not to be used for participants meeting both of the following criteria: participants recruited by staff who self-enrolled in the study and whose participation was not able to be subsequently verified.

The study did not track the number of people approached at nursing homes due to the complexity of recruitment from nursing homes during the earlier phase of the pandemic.

Ethics approvals: This study was conducted under the oversight of a central IRB, Advarra.

The following 10 sites submitted a waiver of oversight from their local IRB to Advarra as part of their submission. The sites, site PI and local IRB names are:

- CAIMED Center CRS / Elizabeth Barranco Santana: Ponce Medical School Foundation IRB
- University of Miami Infectious Disease Research Unit at Jackson Memorial Hospital CRS / Susanne Doblecki-Lewis: University of Miami IRB
- Penn Prevention CRS / Ian Frank: University of Pennsylvania IRB
- University of Pittsburgh CRS / Ken Ho: University of Pittsburgh IRB
- The Ponce de Leon Center CRS / Colleen Kelley: Emory IRB

- New Orleans Adolescent Trials Unit CRS/ Patricia Kissinger: Tulane University Biomedical IRB
- UIC Project WISH CRS / Stockton Mayer: UIC IRB
- Cincinnati CRS/ Margaret Powers-Fletcher: UC IRB
- Children’s Hospital Colorado CRS / Daniel Reirden: Colorado Multiple Institutional Review Board
- Columbia P&S CRS / Magdalena Sobieszczyk: CU CIRB

Five (5) sites did not submit a waiver and required additional approval from their local IRB. These sites, site PI and local IRB names are:

- Baylor College of Medicine CRS / Chris Amos: Baylor College of Medicine IRB
- Johns Hopkins University CRS / Jason Farley: Johns Hopkins University School of Medicine Institutional Review Board
- Harlem Prevention Center CRS / Yael Hirsch-Moverman: Columbia University Irving Medical Center IRB
- Bronx Prevention Research Center CRS / Jessica Justman: Columbia University Irving Medical Center IRB
- New Jersey Medical School Clinical Research Center CRS / Shobha Swaminathan: Rutgers University IRB

References

1. U.S. Food and Drug Administration. EUA Authorized Serology Test Performance 2022 [cited DATE]. <https://www.fda.gov/medical-devices/covid-19-emergency-use-authorizations-medical-devices/eua-authorized-serology-test-performance>
2. Peluso MJ, Takahashi S, Hakim J, Kelly JD, Torres L, Iyer NS, et al. SARS-CoV-2 antibody magnitude and detectability are driven by disease severity, timing, and assay. *Sci Adv.* 2021;7:eabh3409. [PubMed https://doi.org/10.1126/sciadv.abh3409](https://doi.org/10.1126/sciadv.abh3409)
3. Di Germanio C, Simmons G, Kelly K, Martinelli R, Darst O, Azimpouran M, et al. SARS-CoV-2 antibody persistence in COVID-19 convalescent plasma donors: Dependency on assay format and

applicability to serosurveillance. *Transfusion*. 2021;61:2677–87. [PubMed](#)
<https://doi.org/10.1111/trf.16555>

4. Zangeneh SZ, Skalland T, Yuhás K, Emel L, Tapsoba JD, Reed D, et al. Adaptive Time Location Sampling for COMPASS, A SARS-COV-2 prevalence study in fifteen diverse communities in the United States. *Epidemiology*. 2023 Dec 12. Epub ahead of print.
<https://doi.org/10.1097/EDE.0000000000001705>. **PMID: 38079239**.

Appendix Table 1. Enrollment by cohort by site, COMPASS 2021

Site	Cohort	N Approached ¹	N Enrolled	N Combined Analysis ² Cohort
Atlanta	Community Venues	2540	1489	1318
	Outpatient Clinics	260	150	149
	Nursing Homes	.	.	.
Aurora, CO	Community Venues	2425	839	801
	Outpatient Clinics	.	.	.
	Nursing Homes	.	.	.
Baltimore	Community Venues	1148	877	812
	Outpatient Clinics	173	145	145
	Nursing Homes	.	.	.
Bronx	Community Venues	3659	2546	2338
	Outpatient Clinics	15	14	14
	Nursing Homes	.	.	.
Chicago	Community Venues	10426	1246	1187
	Outpatient Clinics	2756	335	335
	Nursing Homes	.	111	110
Cincinnati	Community Venues	7185	1188	1158
	Outpatient Clinics	245	35	35
	Nursing Homes	NA	12	12
Harlem	Community Venues	9704	2672	2553
	Outpatient Clinics	1502	503	502
	Nursing Homes	.	.	.
Houston	Community Venues	4399	1174	1146
	Outpatient Clinics	371	151	151
	Nursing Homes	.	32	32
Miami	Community Venues	2939	1480	1412
	Outpatient Clinics	.	.	.
	Nursing Homes	.	.	.
New Orleans	Community Venues	7831	1799	1765
	Outpatient Clinics	253	73	73
	Nursing Homes	.	201	201
NY Columbia	Community Venues	750	508	472
	Outpatient Clinics	342	265	265
	Nursing Homes	.	.	.
Newark	Community Venues	1673	861	820
	Outpatient Clinics	1085	262	261
	Nursing Homes	.	.	.
Philadelphia	Community Venues	6780	1564	1543
	Outpatient Clinics	1646	539	538
	Nursing Homes	.	.	.
Pittsburgh	Community Venues	2434	1117	1043
	Outpatient Clinics	420	139	139
	Nursing Homes	.	47	47
Ponce, Puerto Rico	Community Venues	4851	2924	2821
	Outpatient Clinics	1157	500	500
	Nursing Homes	.	403	403

Notes:

¹Number of people approached as reported by each research site. Sites were not required to report number of people approached from nursing homes or senior living facilities.

²Number of people with complete data available for analysis of a combined Ab+ or PCR+ endpoint.

Appendix Table 2. Demographic characteristics of participants enrolled from community venues, by site, recruited from participating nursing homes and senior residential facilities, COMPASS 2021 (N = 22,284)

Characteristic	Aurora,		Baltimore	Bronx	Chicago	Cincinnati	Harlem	Houston	Miami	New York			Philadel-	Pittsburgh	Ponce, Puerto Rico
	Atlanta	CO								New Orleans	Columbia	Newark			
Enrollments, N	% (n)	% (n)	% (n)	% (n)	% (n)	% (n)	% (n)	% (n)	% (n)	% (n)	% (n)	% (n)	% (n)	% (n)	% (n)
Age (years)															
<18	3% (47)	11% (92)	3% (22)	18% (460)	1% (15)	5% (59)	15% (411)	4% (49)	4% (54)	6% (108)	0% (0)	2% (18)	2% (29)	2% (22)	25% (727)
18 - 39	40% (591)	41% (342)	21% (180)	27% (677)	31% (385)	42% (503)	28% (761)	34% (403)	31% (460)	32% (571)	37% (189)	21% (184)	29% (458)	34% (377)	25% (732)
40 - 59	35% (525)	37% (312)	51% (444)	32% (802)	48% (602)	35% (410)	29% (762)	43% (507)	41% (603)	33% (590)	38% (191)	51% (435)	46% (724)	32% (353)	25% (736)
60+	22% (325)	11% (93)	26% (231)	24% (603)	20% (244)	18% (216)	28% (736)	18% (215)	24% (362)	29% (528)	25% (127)	26% (221)	23% (352)	33% (365)	25% (729)
Missing	0% (1)	0% (0)	0% (0)	0% (4)	0% (0)	0% (0)	0% (2)	0% (0)	0% (1)	0% (2)	0% (1)	0% (3)	0% (1)	0% (0)	0% (0)
Sex															
Female	45% (666)	51% (430)	48% (425)	51% (1296)	36% (443)	55% (653)	49% (1320)	61% (720)	45% (672)	48% (871)	59% (302)	47% (407)	40% (618)	52% (584)	59% (1715)
Male	54% (807)	49% (409)	52% (452)	49% (1246)	64% (803)	45% (533)	51% (1350)	39% (454)	54% (806)	51% (924)	40% (205)	52% (451)	60% (945)	47% (529)	41% (1205)
Missing	1% (16)	0% (0)	0% (0)	0% (4)	0% (0)	0% (2)	0% (2)	0% (0)	0% (2)	0% (4)	0% (1)	0% (3)	0% (1)	0% (4)	0% (4)
Race															
Black or African American	44% (649)	25% (213)	89% (781)	35% (900)	45% (562)	22% (258)	60% (1595)	37% (434)	27% (394)	64% (1152)	19% (95)	78% (672)	65% (1013)	22% (249)	9% (255)
White	40% (595)	39% (331)	6% (49)	11% (282)	19% (241)	67% (796)	7% (180)	55% (645)	64% (940)	28% (497)	28% (140)	9% (74)	26% (402)	64% (719)	80% (2340)
Other	13% (192)	34% (282)	4% (31)	47% (1195)	33% (406)	11% (125)	31% (834)	8% (91)	8% (122)	8% (137)	48% (244)	11% (92)	9% (142)	12% (130)	9% (261)
Prefer not to answer/Don't know	3% (41)	2% (13)	2% (16)	3% (83)	2% (30)	0% (4)	2% (46)	0% (3)	1% (19)	0% (6)	5% (27)	2% (20)	0% (6)	1% (15)	1% (41)
Missing	1% (12)	0% (0)	0% (0)	3% (86)	1% (7)	0% (5)	1% (17)	0% (1)	0% (5)	0% (7)	0% (2)	0% (3)	0% (1)	0% (4)	1% (27)
Ethnicity															
Hispanic or Latino	14% (207)	37% (308)	3% (30)	68% (1719)	38% (478)	5% (56)	33% (872)	38% (451)	67% (991)	7% (134)	56% (284)	16% (136)	9% (138)	8% (91)	98% (2880)
Not Hispanic or Latino	79% (1171)	62% (522)	90% (793)	31% (798)	60% (749)	94% (1119)	65% (1748)	61% (713)	32% (476)	91% (1645)	43% (216)	82% (706)	91% (1417)	87% (973)	1% (15)
Prefer not to answer/Don't know	2% (36)	1% (7)	6% (49)	1% (23)	1% (15)	0% (2)	1% (28)	0% (5)	0% (6)	1% (10)	1% (7)	1% (11)	0% (4)	3% (29)	0% (2)
Missing	5% (75)	0% (2)	1% (5)	0% (6)	0% (4)	1% (11)	1% (24)	0% (5)	0% (7)	1% (10)	0% (1)	1% (8)	0% (5)	2% (24)	1% (27)
Education															
No formal education	1% (15)	2% (13)	1% (11)	3% (87)	1% (8)	0% (2)	4% (110)	0% (5)	2% (23)	1% (22)	0% (2)	2% (20)	0% (5)	1% (6)	4% (117)
Pre-kindergarten	0% (2)	0% (1)	0% (1)	1% (34)	0% (0)	0% (2)	1% (40)	0% (3)	0% (2)	0% (8)	0% (0)	0% (1)	0% (1)	0% (0)	2% (52)
Kindergarten	1% (8)	1% (5)	0% (1)	4% (102)	0% (5)	0% (1)	4% (106)	0% (3)	1% (15)	2% (27)	0% (1)	0% (3)	0% (4)	0% (0)	2% (68)

Characteristic	Aurora,		Baltimore	Bronx	Chicago	Cincinnati	Harlem	Houston	Miami	New Orleans	New York -		Philadel- phia	Pittsburgh	Ponce, Puerto Rico
	Atlanta	CO									Columbia	Newark			
	% (n)	% (n)	% (n)	% (n)	% (n)	% (n)	% (n)	% (n)	% (n)	% (n)	% (n)	% (n)	% (n)	% (n)	% (n)
Elementary school	1% (18)	6% (52)	1% (12)	10% (246)	2% (29)	1% (9)	5% (124)	4% (47)	4% (64)	2% (36)	2% (11)	1% (10)	1% (21)	0% (5)	9% (258)
Middle school	6% (83)	15% (122)	23% (202)	27% (677)	17% (215)	7% (89)	12% (324)	18% (216)	14% (207)	13% (236)	8% (40)	12% (106)	10% (162)	3% (31)	14% (414)
High school diploma/GED	25% (375)	28% (237)	53% (462)	31% (792)	42% (528)	28% (336)	38% (1008)	33% (393)	47% (689)	33% (599)	22% (114)	52% (448)	61% (952)	22% (244)	24% (705)
Some college/university	16% (236)	19% (156)	15% (135)	12% (314)	19% (236)	18% (216)	16% (419)	20% (229)	16% (241)	20% (359)	17% (88)	18% (152)	14% (217)	22% (242)	15% (426)
College/university degree	30% (445)	22% (183)	5% (43)	10% (243)	13% (168)	29% (340)	16% (422)	18% (210)	14% (206)	20% (358)	30% (151)	10% (90)	10% (158)	29% (324)	23% (663)
Post-graduate degree	20% (294)	8% (70)	1% (10)	2% (40)	5% (57)	16% (192)	4% (117)	6% (68)	2% (29)	8% (152)	20% (100)	3% (28)	3% (43)	23% (259)	7% (198)
Missing	1% (13)	0% (0)	0% (0)	0% (11)	0% (0)	0% (1)	0% (2)	0% (0)	0% (4)	0% (2)	0% (1)	0% (3)	0% (1)	1% (6)	1% (23)
Household income <\$15,000	12% (173)	23% (196)	40% (351)	25% (645)	33% (417)	12% (141)	33% (883)	34% (394)	23% (347)	29% (517)	22% (111)	28% (238)	40% (625)	14% (160)	40% (1177)
\$15,000 - \$24,999	4% (66)	8% (69)	12% (108)	9% (222)	13% (158)	4% (47)	11% (285)	12% (139)	12% (185)	9% (153)	11% (56)	7% (59)	11% (165)	9% (97)	14% (409)
\$25,000 - \$34,999	5% (74)	6% (51)	5% (43)	5% (140)	8% (103)	4% (47)	8% (216)	10% (116)	5% (81)	6% (110)	7% (37)	6% (48)	5% (81)	7% (73)	7% (218)
\$35,000 - \$49,999	6% (87)	7% (60)	4% (36)	5% (128)	6% (71)	7% (86)	7% (199)	7% (85)	6% (83)	7% (123)	10% (49)	4% (36)	5% (73)	8% (88)	4% (123)
\$50,000 - \$74,999	8% (115)	8% (69)	2% (21)	3% (84)	5% (63)	9% (106)	6% (159)	6% (71)	4% (54)	6% (111)	15% (75)	4% (35)	5% (82)	11% (126)	3% (77)
\$75,000 - \$99,999	6% (88)	5% (44)	1% (8)	2% (39)	3% (34)	8% (98)	2% (56)	3% (37)	2% (24)	5% (85)	6% (32)	2% (21)	2% (37)	7% (82)	1% (42)
\$100,000 - \$149,999	8% (122)	8% (71)	1% (6)	1% (20)	3% (32)	9% (107)	2% (60)	4% (45)	1% (21)	4% (65)	10% (51)	1% (8)	2% (24)	9% (106)	1% (25)
\$150,000 - \$199,999	5% (71)	3% (28)	0% (3)	0% (4)	1% (9)	4% (53)	1% (30)	1% (16)	1% (10)	2% (32)	4% (18)	0% (2)	1% (14)	5% (53)	0% (2)
>\$200,000	6% (93)	5% (43)	1% (5)	0% (1)	1% (17)	3% (31)	1% (27)	2% (28)	1% (12)	1% (21)	3% (14)	1% (7)	1% (10)	5% (55)	1% (20)
Don't Know/Not sure	8% (124)	21% (178)	23% (203)	42% (1064)	24% (297)	32% (376)	24% (651)	12% (140)	29% (434)	25% (446)	8% (43)	28% (244)	24% (379)	15% (165)	22% (650)
Prefer not to answer	30% (442)	4% (30)	10% (91)	8% (193)	4% (45)	8% (94)	4% (104)	9% (103)	15% (224)	7% (134)	4% (21)	19% (160)	5% (73)	10% (107)	5% (140)
Missing	2% (34)	0% (0)	0% (2)	0% (6)	0% (0)	0% (2)	0% (2)	0% (0)	0% (5)	0% (2)	0% (1)	0% (3)	0% (1)	0% (5)	1% (41)
Employment (13 years/older)															
Employed - full time	44% (564)	39% (310)	14% (117)	15% (334)	22% (271)	42% (483)	19% (447)	32% (338)	30% (432)	28% (478)	40% (199)	22% (181)	18% (273)	42% (453)	26% (627)
Employed - part time	14% (176)	16% (130)	7% (61)	12% (262)	15% (183)	16% (184)	11% (248)	8% (85)	12% (171)	11% (183)	16% (80)	8% (65)	10% (152)	17% (181)	12% (273)
Homemaker/stay at home parent	2% (27)	2% (16)	0% (2)	2% (40)	1% (9)	1% (8)	2% (46)	4% (41)	3% (36)	1% (20)	1% (7)	1% (5)	1% (17)	1% (8)	13% (305)

Characteristic	Aurora,		Baltimore	Bronx	Chicago	Cincinnati	Harlem	Houston	Miami	New Orleans	New York -		Philadel-	Pittsburgh	Ponce, Puerto Rico
	Atlanta	CO									Columbia	Newark			
	% (n)	% (n)	% (n)	% (n)	% (n)	% (n)	% (n)	% (n)	% (n)	% (n)	% (n)	% (n)	% (n)	% (n)	% (n)
Not currently employed	21% (266)	29% (227)	34% (288)	43% (935)	39% (478)	25% (288)	44% (1031)	44% (467)	34% (479)	30% (510)	18% (93)	48% (399)	46% (718)	13% (137)	20% (467)
Retired	11% (141)	7% (55)	10% (86)	12% (273)	9% (108)	11% (120)	14% (332)	9% (98)	10% (143)	18% (305)	14% (72)	10% (84)	9% (146)	20% (213)	20% (466)
Disable	6% (77)	6% (45)	29% (248)	15% (338)	14% (170)	4% (43)	9% (202)	3% (37)	8% (119)	10% (163)	8% (41)	11% (94)	15% (232)	6% (61)	4% (87)
Other	2% (28)	1% (7)	5% (40)	1% (17)	1% (14)	1% (12)	2% (42)	1% (7)	3% (47)	2% (40)	2% (11)	1% (9)	1% (10)	3% (35)	6% (147)
Household size															
1	17% (254)	13% (110)	8% (68)	14% (360)	17% (207)	25% (297)	23% (603)	12% (146)	17% (252)	29% (521)	20% (104)	26% (225)	1% (14)	15% (162)	12% (341)
2	29% (427)	22% (184)	26% (228)	24% (602)	26% (328)	31% (369)	26% (702)	21% (252)	21% (314)	28% (497)	32% (163)	25% (212)	28% (437)	34% (380)	24% (712)
3-5	31% (457)	41% (343)	31% (271)	40% (1028)	36% (449)	35% (415)	38% (1011)	38% (449)	42% (615)	29% (513)	39% (199)	30% (256)	31% (491)	31% (343)	58% (1698)
>=6	3% (51)	15% (123)	6% (54)	13% (321)	8% (97)	4% (53)	7% (200)	10% (119)	8% (114)	5% (87)	3% (16)	9% (77)	9% (137)	4% (45)	3% (74)
Missing	20% (300)	9% (79)	29% (256)	9% (235)	13% (165)	5% (54)	6% (156)	18% (208)	12% (185)	10% (181)	5% (26)	11% (91)	31% (485)	17% (187)	3% (99)
Medical condition															
None	39% (583)	42% (355)	24% (207)	43% (1089)	36% (444)	53% (629)	43% (1146)	43% (510)	49% (726)	34% (618)	38% (195)	27% (235)	25% (396)	33% (367)	48% (1410)
At least one	30% (454)	57% (479)	76% (666)	57% (1447)	64% (796)	46% (549)	57% (1521)	56% (661)	50% (747)	65% (1171)	61% (309)	72% (622)	74% (1165)	66% (735)	51% (1484)
Missing	30% (452)	1% (5)	0% (4)	0% (10)	0% (6)	1% (10)	0% (5)	0% (3)	0% (7)	1% (10)	1% (4)	0% (4)	0% (3)	1% (15)	1% (30)
Medical conditions															
0	39% (583)	42% (355)	24% (207)	43% (1089)	36% (444)	53% (629)	43% (1146)	43% (510)	49% (726)	34% (618)	38% (195)	27% (235)	25% (396)	33% (367)	48% (1410)
1	20% (293)	29% (244)	25% (218)	23% (585)	25% (314)	26% (311)	24% (652)	26% (310)	26% (391)	27% (482)	28% (144)	26% (223)	26% (406)	28% (311)	26% (770)
2-3	9% (140)	22% (182)	37% (322)	25% (630)	30% (375)	17% (199)	25% (665)	25% (291)	19% (287)	32% (568)	25% (127)	32% (274)	34% (530)	29% (319)	21% (619)
>=4	1% (21)	6% (53)	14% (126)	9% (232)	9% (107)	3% (39)	8% (204)	5% (60)	5% (69)	7% (121)	7% (38)	15% (125)	15% (229)	9% (105)	3% (95)
Missing	30% (452)	1% (5)	0% (4)	0% (10)	0% (6)	1% (10)	0% (5)	0% (3)	0% (7)	1% (10)	1% (4)	0% (4)	0% (3)	1% (15)	1% (30)

Appendix Table 3. Demographic characteristics of participants enrolled from outpatient clinical venues, by site, COMPASS 2021 (N = 3,111)

Characteristic	New York												
	Atlanta	Baltimore	Bronx	Chicago	Cincinnati	Harlem	Houston	New Orleans	- Columbia	Newark	Philadel- phia	Pittsburgh	Ponce, Puerto Rico
Enrollments, N	% (n)	% (n)	% (n)	% (n)	% (n)	% (n)	% (n)	% (n)	% (n)	% (n)	% (n)	% (n)	% (n)
Enrollments, N	150	145	14	335	35	503	151	73	265	262	539	139	500
Age (years)													
18 - 39	31% (46)	32% (47)	7% (1)	29% (96)	14% (5)	21% (106)	39% (59)	21% (15)	26% (70)	38% (100)	30% (162)	31% (43)	36% (180)
40 - 59	43% (64)	47% (68)	64% (9)	39% (132)	57% (20)	60% (301)	48% (72)	59% (43)	47% (125)	45% (118)	49% (264)	46% (64)	43% (216)
60+	27% (40)	21% (30)	29% (4)	32% (107)	29% (10)	19% (96)	13% (20)	21% (15)	26% (70)	17% (44)	21% (113)	23% (32)	21% (104)
Sex													
Female	67% (100)	54% (79)	64% (9)	63% (211)	66% (23)	65% (329)	44% (66)	21% (15)	62% (163)	69% (180)	40% (216)	45% (63)	54% (268)
Male	33% (50)	46% (66)	36% (5)	37% (124)	34% (12)	35% (174)	56% (85)	79% (58)	38% (102)	31% (82)	60% (323)	55% (76)	46% (232)
Race													
Black or African American	72% (108)	83% (121)	14% (2)	57% (192)	54% (19)	70% (354)	51% (77)	67% (49)	26% (70)	54% (142)	66% (354)	37% (52)	13% (64)
White	24% (36)	12% (18)	7% (1)	19% (62)	43% (15)	3% (14)	46% (69)	32% (23)	10% (27)	24% (62)	24% (131)	51% (71)	83% (416)
Other	3% (5)	2% (3)	71% (10)	21% (69)	3% (1)	26% (130)	3% (5)	1% (1)	55% (146)	18% (48)	10% (52)	10% (14)	4% (20)
Prefer not to answer/Don't know	1% (1)	1% (2)	7% (1)	2% (7)	0% (0)	1% (5)	0% (0)	0% (0)	8% (22)	3% (9)	0% (2)	1% (2)	0% (0)
Missing	0% (0)	1% (1)	0% (0)	1% (5)	0% (0)	0% (0)	0% (0)	0% (0)	0% (0)	0% (1)	0% (0)	0% (0)	0% (0)
Ethnicity													
Hispanic or Latino	9% (14)	1% (2)	57% (8)	29% (96)	0% (0)	25% (128)	28% (43)	4% (3)	65% (171)	26% (68)	9% (51)	9% (12)	99% (493)
Not Hispanic or Latino	86% (129)	92% (133)	36% (5)	71% (238)	97% (34)	73% (367)	71% (107)	95% (69)	35% (93)	73% (192)	90% (486)	88% (122)	0% (1)
Prefer not to answer/Don't know	1% (2)	5% (7)	7% (1)	0% (0)	0% (0)	1% (3)	0% (0)	0% (0)	0% (1)	1% (2)	0% (1)	4% (5)	0% (1)
Missing	3% (5)	2% (3)	0% (0)	0% (1)	3% (1)	1% (5)	1% (1)	1% (1)	0% (0)	0% (0)	0% (1)	0% (0)	1% (5)
Education													
No formal education	1% (2)	0% (0)	0% (0)	1% (2)	0% (0)	1% (4)	0% (0)	0% (0)	0% (0)	1% (2)	0% (2)	0% (0)	1% (7)
Kindergarten	0% (0)	0% (0)	0% (0)	0% (0)	0% (0)	0% (1)	0% (0)	1% (1)	0% (0)	0% (0)	0% (0)	0% (0)	1% (3)
Elementary school	1% (2)	0% (0)	7% (1)	1% (2)	0% (0)	2% (12)	3% (4)	0% (0)	3% (9)	0% (0)	0% (2)	0% (0)	5% (23)
Middle school	1% (2)	13% (19)	14% (2)	9% (31)	9% (3)	12% (60)	12% (18)	21% (15)	11% (28)	2% (6)	11% (59)	0% (0)	9% (43)
High school diploma/GED	21% (32)	52% (76)	36% (5)	29% (96)	40% (14)	41% (206)	35% (53)	38% (28)	28% (75)	32% (83)	56% (301)	22% (31)	26% (132)
Some college/university	18% (27)	22% (32)	29% (4)	32% (108)	37% (13)	18% (93)	28% (43)	23% (17)	22% (58)	27% (72)	16% (86)	29% (40)	22% (108)
College/university degree	35% (52)	10% (15)	7% (1)	23% (77)	11% (4)	19% (96)	20% (30)	15% (11)	23% (61)	28% (74)	11% (61)	32% (44)	28% (142)

Characteristic	New York												
	Atlanta	Baltimore	Bronx	Chicago	Cincinnati	Harlem	Houston	New Orleans	- Columbia	Newark	Philadel- phia	Pittsburgh	Ponce, Puerto Rico
	% (n)	% (n)	% (n)	% (n)	% (n)	% (n)	% (n)	% (n)	% (n)	% (n)	% (n)	% (n)	% (n)
Post-graduate degree	22% (33)	2% (3)	7% (1)	6% (19)	3% (1)	6% (31)	2% (3)	1% (1)	13% (34)	10% (25)	5% (28)	17% (24)	8% (42)
Household income													
<\$15,000	3% (4)	23% (33)	57% (8)	23% (76)	17% (6)	21% (107)	34% (51)	34% (25)	20% (53)	10% (26)	29% (156)	14% (19)	50% (249)
\$15,000 - \$24,999	5% (7)	8% (11)	14% (2)	13% (43)	9% (3)	10% (51)	5% (8)	7% (5)	9% (24)	4% (11)	9% (50)	16% (22)	13% (64)
\$25,000 - \$34,999	3% (4)	9% (13)	0% (0)	9% (30)	14% (5)	6% (30)	5% (7)	5% (4)	8% (22)	9% (24)	6% (32)	9% (13)	8% (41)
\$35,000 - \$49,999	7% (10)	10% (15)	0% (0)	10% (35)	17% (6)	8% (40)	18% (27)	5% (4)	7% (19)	15% (39)	7% (38)	10% (14)	6% (30)
\$50,000 - \$74,999	14% (21)	6% (8)	0% (0)	15% (49)	6% (2)	9% (43)	6% (9)	4% (3)	15% (40)	12% (31)	4% (23)	6% (9)	3% (17)
\$75,000 - \$99,999	9% (14)	4% (6)	0% (0)	4% (15)	3% (1)	3% (16)	2% (3)	3% (2)	7% (18)	7% (19)	3% (18)	9% (13)	1% (4)
\$100,000 - \$149,999	7% (11)	0% (0)	0% (0)	4% (12)	3% (1)	2% (10)	1% (2)	0% (0)	8% (21)	9% (23)	2% (13)	7% (10)	1% (3)
\$150,000 - \$199,999	5% (8)	2% (3)	0% (0)	1% (4)	0% (0)	1% (4)	1% (2)	0% (0)	5% (13)	4% (11)	1% (8)	5% (7)	0% (1)
>\$200,000	4% (6)	0% (0)	0% (0)	1% (3)	0% (0)	1% (3)	1% (2)	1% (1)	1% (3)	2% (4)	1% (3)	4% (5)	0% (1)
Don't Know/Not sure	8% (12)	19% (27)	21% (3)	17% (56)	31% (11)	35% (174)	15% (23)	30% (22)	12% (33)	13% (33)	31% (169)	14% (20)	17% (83)
Prefer not to answer	35% (53)	20% (29)	7% (1)	4% (12)	0% (0)	5% (25)	11% (17)	10% (7)	7% (19)	16% (41)	5% (29)	5% (7)	1% (7)
Employment (13 years/older)													
Employed - full time	62% (79)	35% (51)	7% (1)	30% (100)	31% (11)	28% (142)	42% (62)	22% (16)	47% (122)	64% (165)	21% (114)	55% (75)	41% (203)
Employed - part time	5% (6)	6% (8)	0% (0)	11% (36)	6% (2)	9% (45)	7% (10)	1% (1)	8% (21)	6% (15)	11% (58)	9% (13)	8% (40)
Homemaker/stay at home parent	3% (4)	0% (0)	0% (0)	2% (7)	3% (1)	2% (10)	1% (2)	0% (0)	0% (0)	0% (0)	2% (12)	0% (0)	11% (54)
Not currently employed	9% (12)	31% (45)	14% (2)	28% (93)	20% (7)	43% (215)	40% (58)	58% (42)	24% (63)	21% (55)	42% (225)	12% (17)	10% (49)
Retired	16% (21)	6% (9)	7% (1)	13% (42)	14% (5)	8% (42)	4% (6)	8% (6)	10% (25)	2% (5)	8% (45)	12% (16)	9% (43)
Disable	4% (5)	19% (27)	71% (10)	16% (52)	23% (8)	9% (43)	4% (6)	11% (8)	10% (27)	4% (11)	16% (84)	11% (15)	14% (70)
Other	1% (1)	3% (5)	0% (0)	1% (4)	3% (1)	1% (6)	1% (2)	0% (0)	1% (3)	2% (6)	0% (1)	1% (1)	8% (39)
Household size													
1	19% (28)	9% (13)	36% (5)	19% (63)	26% (9)	17% (88)	17% (26)	32% (23)	24% (64)	14% (36)	1% (6)	9% (12)	8% (42)
2	23% (35)	21% (30)	14% (2)	27% (91)	29% (10)	28% (140)	17% (26)	15% (11)	26% (68)	27% (72)	26% (142)	29% (41)	27% (137)
3-5	40% (60)	40% (58)	29% (4)	36% (121)	29% (10)	36% (181)	36% (55)	30% (22)	40% (105)	45% (118)	40% (217)	29% (40)	39% (196)
>=6	5% (8)	12% (18)	0% (0)	7% (23)	17% (6)	7% (37)	5% (8)	8% (6)	5% (14)	8% (22)	5% (27)	1% (2)	21% (106)
Missing	13% (19)	18% (26)	21% (3)	11% (37)	0% (0)	11% (57)	24% (36)	15% (11)	5% (14)	5% (14)	27% (147)	32% (44)	4% (19)
Medical conditions													
None	25% (38)	19% (27)	0% (0)	16% (52)	29% (10)	35% (177)	50% (76)	16% (12)	24% (63)	37% (98)	23% (124)	15% (21)	33% (167)
At least one	36% (54)	81% (118)	100% (14)	84% (283)	71% (25)	65% (326)	50% (75)	84% (61)	75% (198)	62% (162)	77% (414)	83% (116)	67% (333)

Characteristic	New York												
	Atlanta	Baltimore	Bronx	Chicago	Cincinnati	Harlem	Houston	New Orleans	Columbia	Newark	Phila-	Pittsburgh	Ponce, Puerto Rico
	% (n)	% (n)	% (n)	% (n)	% (n)	% (n)	% (n)	% (n)	% (n)	% (n)	% (n)	% (n)	% (n)
Missing	39% (58)	0% (0)	0% (0)	0% (0)	0% (0)	0% (0)	0% (0)	0% (0)	2% (4)	1% (2)	0% (1)	1% (2)	0% (0)
Medical conditions													
0	25% (38)	19% (27)	0% (0)	16% (52)	29% (10)	35% (177)	50% (76)	16% (12)	24% (63)	37% (98)	23% (124)	15% (21)	33% (167)
1	21% (32)	34% (50)	0% (0)	23% (77)	23% (8)	30% (152)	23% (35)	23% (17)	28% (73)	26% (68)	26% (140)	31% (43)	33% (167)
2-3	12% (18)	34% (50)	43% (6)	41% (136)	29% (10)	27% (135)	18% (27)	38% (28)	31% (83)	29% (76)	37% (199)	32% (44)	28% (141)
>=4	3% (4)	12% (18)	57% (8)	21% (70)	20% (7)	8% (39)	9% (13)	22% (16)	16% (42)	7% (18)	14% (75)	21% (29)	5% (25)
Missing	39% (58)	0% (0)	0% (0)	0% (0)	0% (0)	0% (0)	0% (0)	0% (0)	2% (4)	1% (2)	0% (1)	1% (2)	0% (0)

Appendix Table 4. Demographic characteristics of participants enrolled from nursing homes, by site, COMPASS 2021 (N = 806)

Characteristic	Chicago	Cincinnati	Houston	New Orleans	Pittsburgh	Ponce, Puerto Rico
	% (n)	% (n)	% (n)	% (n)	% (n)	% (n)
Enrollments, N	111	12	32	201	47	403
Age (years)						
18 - 39	9% (10)	8% (1)	0% (0)	0% (0)	2% (1)	0% (0)
40 - 59	30% (33)	0% (0)	0% (0)	10% (20)	2% (1)	2% (8)
60+	61% (68)	92% (11)	100% (32)	90% (181)	96% (45)	98% (395)
Sex						
Female	32% (35)	58% (7)	66% (21)	46% (93)	66% (31)	66% (266)
Male	68% (76)	42% (5)	34% (11)	54% (108)	34% (16)	34% (136)
Missing	0% (0)	0% (0)	0% (0)	0% (0)	0% (0)	0% (1)
Race						
Black or African American	51% (57)	0% (0)	0% (0)	89% (179)	0% (0)	7% (30)
White	35% (39)	92% (11)	100% (32)	3% (6)	98% (46)	90% (362)
Other	13% (14)	8% (1)	0% (0)	6% (13)	0% (0)	2% (10)
Prefer not to answer/Don't know	1% (1)	0% (0)	0% (0)	1% (3)	0% (0)	0% (0)
Missing	0% (0)	0% (0)	0% (0)	0% (0)	2% (1)	0% (1)
Ethnicity						
Hispanic or Latino	16% (18)	0% (0)	3% (1)	3% (6)	0% (0)	99% (399)
Not Hispanic or Latino	81% (90)	92% (11)	97% (31)	96% (192)	96% (45)	0% (0)
Prefer not to answer/Don't know	2% (2)	0% (0)	0% (0)	1% (2)	2% (1)	0% (1)
Missing	1% (1)	8% (1)	0% (0)	0% (1)	2% (1)	1% (3)
Education						
No formal education	0% (0)	0% (0)	0% (0)	0% (0)	0% (0)	4% (17)
Kindergarten	1% (1)	0% (0)	0% (0)	0% (0)	0% (0)	1% (3)
Elementary school	2% (2)	0% (0)	0% (0)	3% (6)	0% (0)	12% (49)
Middle school	12% (13)	0% (0)	0% (0)	23% (47)	0% (0)	17% (70)
High school diploma/GED	42% (47)	42% (5)	6% (2)	47% (94)	28% (13)	40% (161)
Some college/university	25% (28)	17% (2)	31% (10)	18% (37)	19% (9)	12% (48)
College/university degree	8% (9)	33% (4)	41% (13)	6% (12)	26% (12)	11% (43)
Post-graduate degree	6% (7)	8% (1)	22% (7)	2% (5)	26% (12)	3% (12)
Missing	4% (4)	0% (0)	0% (0)	0% (0)	2% (1)	0% (0)
Household income						
<\$15,000	41% (46)	0% (0)	0% (0)	47% (95)	4% (2)	88% (354)
\$15,000 - \$24,999	10% (11)	8% (1)	6% (2)	14% (28)	2% (1)	4% (15)
\$25,000 - \$34,999	1% (1)	8% (1)	3% (1)	1% (2)	9% (4)	0% (1)
\$35,000 - \$49,999	2% (2)	8% (1)	9% (3)	0% (1)	4% (2)	0% (0)
\$50,000 - \$74,999	0% (0)	0% (0)	22% (7)	1% (2)	15% (7)	0% (0)
\$75,000 - \$99,999	0% (0)	0% (0)	16% (5)	0% (1)	11% (5)	0% (0)
\$100,000 - \$149,999	0% (0)	0% (0)	9% (3)	0% (0)	6% (3)	0% (0)
\$150,000 - \$199,999	1% (1)	0% (0)	9% (3)	0% (0)	2% (1)	0% (0)
>\$200,000	1% (1)	0% (0)	6% (2)	0% (0)	0% (0)	0% (0)
Don't Know/Not sure	42% (47)	75% (9)	3% (1)	31% (62)	34% (16)	8% (33)
Prefer not to answer	2% (2)	0% (0)	16% (5)	5% (10)	11% (5)	0% (0)
Missing	0% (0)	0% (0)	0% (0)	0% (0)	2% (1)	0% (0)
Employment (13 years/older)						
Employed - full time	1% (1)	0% (0)	0% (0)	4% (7)	4% (2)	0% (1)
Employed - part time	0% (0)	8% (1)	0% (0)	2% (3)	0% (0)	1% (2)
Homemaker/stay at home parent	0% (0)	0% (0)	0% (0)	1% (1)	0% (0)	19% (73)
Not currently employed	35% (37)	0% (0)	13% (4)	6% (11)	2% (1)	2% (9)
Retired	32% (34)	92% (11)	87% (26)	56% (111)	93% (43)	65% (254)
Disable	33% (35)	0% (0)	0% (0)	32% (64)	0% (0)	8% (31)
Other	0% (0)	0% (0)	0% (0)	0% (0)	0% (0)	5% (18)
Household size						
1	15% (17)	67% (8)	62% (20)	77% (154)	19% (9)	67% (272)
2	50% (55)	25% (3)	19% (6)	8% (17)	45% (21)	7% (30)
3-5	21% (23)	8% (1)	0% (0)	0% (0)	0% (0)	1% (5)
>=6	0% (0)	0% (0)	0% (0)	0% (0)	0% (0)	19% (76)
Missing	14% (16)	0% (0)	19% (6)	15% (30)	36% (17)	5% (20)
Medical conditions						
None	5% (6)	25% (3)	16% (5)	14% (29)	17% (8)	14% (55)
At least one	88% (98)	58% (7)	84% (27)	86% (172)	81% (38)	81% (325)
Missing	6% (7)	17% (2)	0% (0)	0% (0)	2% (1)	6% (23)
Medical conditions						
0	5% (6)	25% (3)	16% (5)	14% (29)	17% (8)	14% (55)
1	5% (5)	17% (2)	31% (10)	28% (57)	28% (13)	23% (93)
2-3	31% (34)	42% (5)	31% (10)	37% (74)	45% (21)	46% (187)
>=4	53% (59)	0% (0)	22% (7)	20% (41)	9% (4)	11% (45)

Characteristic	Chicago	Cincinnati	Houston	New Orleans	Pittsburgh	Ponce, Puerto Rico
	% (n)	% (n)	% (n)	% (n)	% (n)	% (n)
Missing	6% (7)	17% (2)	0% (0)	0% (0)	2% (1)	6% (23)

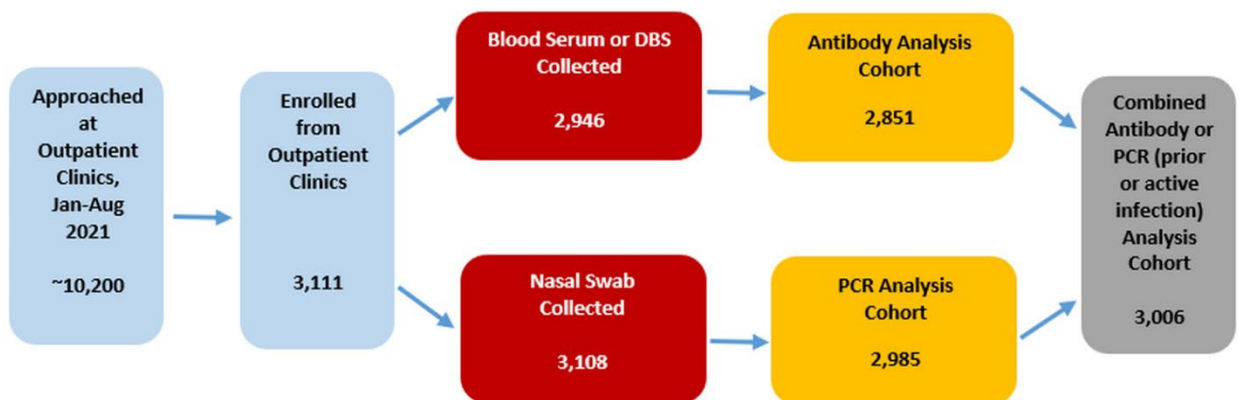
Appendix Table 5. Seroprevalence (Ab+) and percent of nasal samples SARS-CoV-2 PCR positive by cohort, across sites, COMPASS 2021

Cohort	PCR+	Ab+
	Median [IQR]	Median [IQR]
Community	0.8% [0.2%, 1.5%]	12.4% [9.1%, 13.9%]
Clinical	0.4% [0%, 0.9%]	11.3% [7.7%, 15.5%]
Nursing Homes	0% [0%, 0%]	3.3% [2.4%, 7.7%]

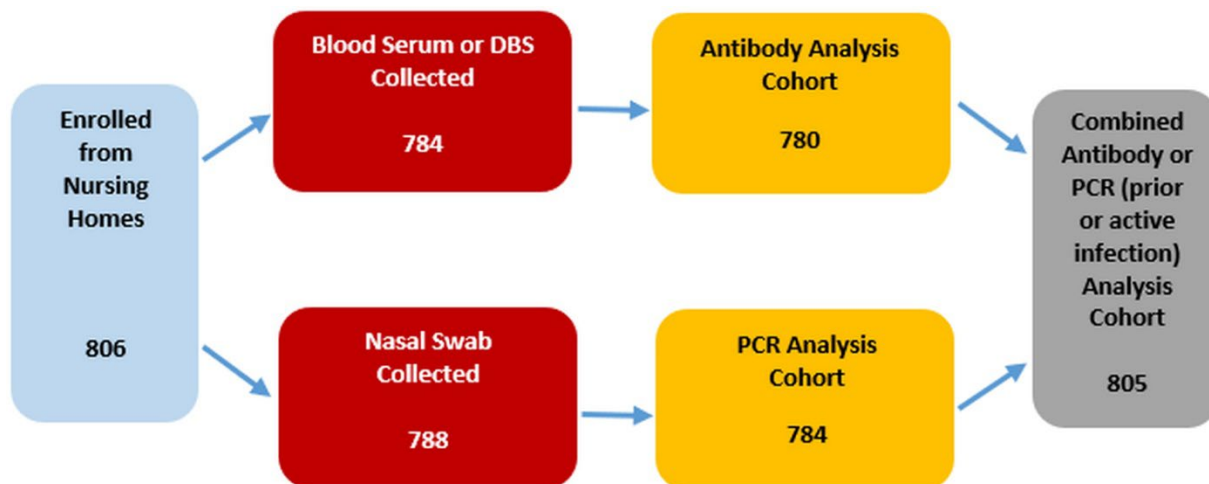
Notes: the prevalence estimates for the community cohort were based on post-stratified weights while the estimates for the clinical cohort used design base weights and those for the nursing home cohort were unweighted.

Appendix Table 6: Combined active or prior infection prevalence and vaccine willingness (median, IQR) among the community cohort (N = 22,284)

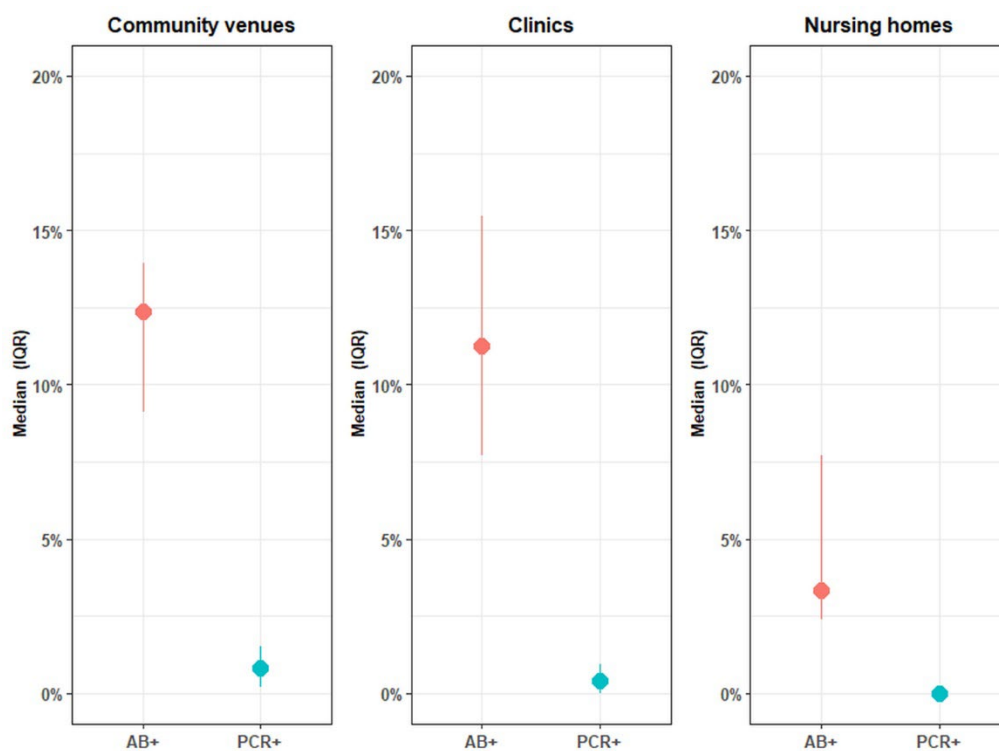
Group	Combined Prevalence	Vaccine Willingness
	Median [IQR]	Median [IQR]
Overall	12.9% [9.2%, 13.9%]	77.5% [72.1%, 82.2%]
Age (years)		
<18	10.8% [9.0%, 11.8%]	61.0% [52.3%, 72.3%]
18-39	9.9% [8.0%, 11.8%]	73.4% [66.7%, 82.9%]
40-59	12.2% [10.2%, 13.5%]	75.7% [74.0%, 81.0%]
60+	13.0% [7.7%, 14.7%]	88.8% [83.5%, 92.5%]
Sex		
Male	12.3% [9.9%, 13.2%]	76.3% [71.9%, 79.8%]
Female	12.0% [8.2%, 14.3%]	76.3% [71.5%, 83.1%]
Race		
Black	13.2% [11.7%, 15.2%]	71.4% [64.8%, 76.3%]
White	9.3% [6.1%, 10.9%]	84.2% [73.6%, 87.0%]
Other	13.4% [9.7%, 14.9%]	78.1% [68.8%, 82.5%]
Ethnicity		
Hispanic/Latino	15.4% [11.5%, 16.4%]	76.4% [70.3%, 80.5%]
Not Hispanic/Latino	10.6% [8.5%, 13.2%]	78.1% [71.7%, 85.0%]



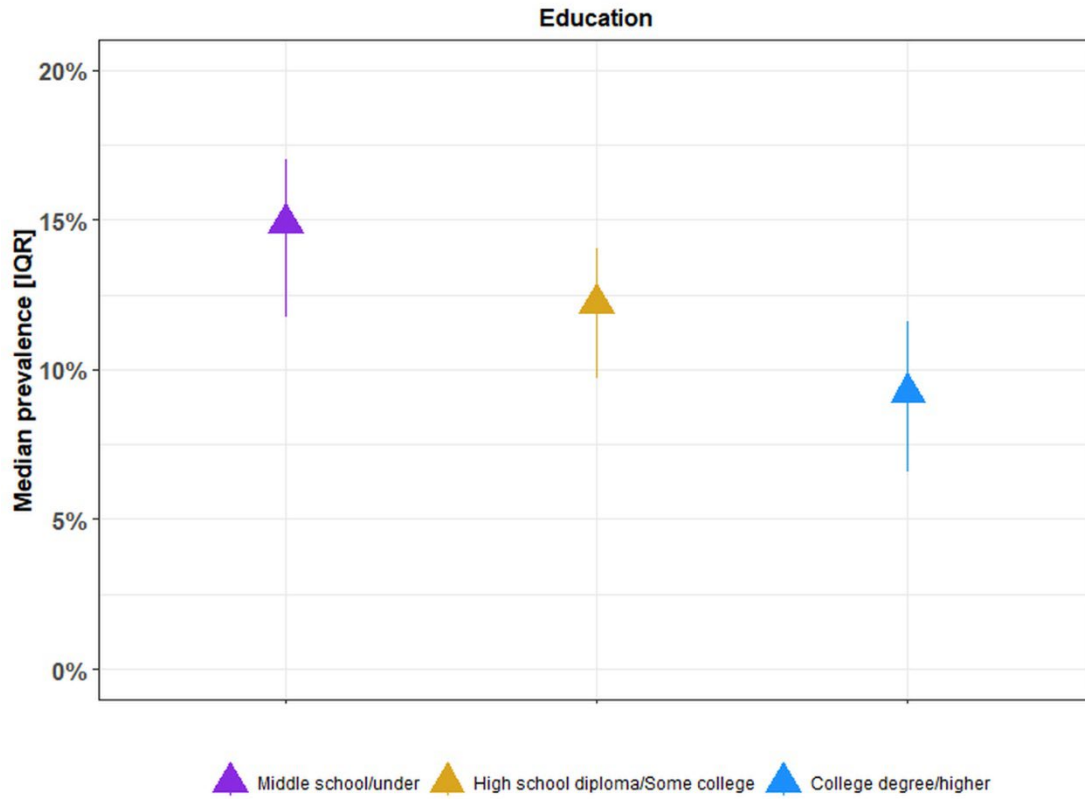
Appendix Figure 1. Participant enrollment from outpatient clinics, COMPASS 2021. DBS: dried blood sample.



Appendix Figure 2. Participant enrollment from nursing homes, COMPASS 2021. Note: Sites were not required to report number of people approached from nursing homes or senior living facilities. DBS, dried blood spot.



Appendix Figure 3. Seroprevalence and percent of nasal samples SARS-CoV-2 PCR positive by cohort, across sites, COMPASS 2021.



Appendix Figure 4. Prevalence of active or prior infection by education among those age 18 years and older in community cohort across all sites, COMPASS 2021.