

---

# Middle East Respiratory Syndrome Coronavirus Infection Dynamics and Antibody Responses among Clinically Diverse Patients, Saudi Arabia

Hail M. Al-Abdely,<sup>1</sup> Claire M. Midgley,<sup>1</sup> Abdulrahim M. Alkhamis, Glen R. Abedi, Xiaoyan Lu, Alison M. Binder, Khalid H. Alanazi, Azaibi Tamin, Weam M. Banjar, Sandra Lester, Osman Abdalla, Rebecca M. Dahl, Mutaz Mohammed, Suvang Trivedi, Homoud S. Algarni, Senthilkumar K. Sakthivel, Abdullah Algwizani, Fahad Bafaqeeh, Abdullah Alzahrani, Ali Abraheem Alsharef, Raafat F. Alhakeem, Hani A. Aziz Jokhdar, Sameeh S. Ghazal, Natalie J. Thornburg, Dean D. Erdman, Abdullah M. Assiri, John T. Watson, Susan I. Gerber

Middle East respiratory syndrome coronavirus (MERS-CoV) shedding and antibody responses are not fully understood, particularly in relation to underlying medical conditions, clinical manifestations, and mortality. We enrolled MERS-CoV-positive patients at a hospital in Saudi Arabia and periodically collected specimens from multiple sites for real-time reverse transcription PCR and serologic testing. We conducted interviews and chart abstractions to collect clinical, epidemiologic, and laboratory information. We found that diabetes mellitus among survivors was associated with prolonged MERS-CoV RNA detection in the respiratory tract. Among case-patients who died, development of robust neutralizing serum antibody responses during the second and third weeks of illness was not sufficient for patient recovery or virus clearance. Fever and cough among mildly ill patients typically aligned with RNA detection in the upper respiratory tract; RNA levels peaked during the first week of illness. These findings should be considered in the development of infection control policies, vaccines, and antibody therapeutics.

---

Author affiliations: Ministry of Health, Riyadh, Saudi Arabia (H.M. Al-Abdely, A.M. Alkhamis, K.H. Alanazi, W.M. Banjar, O. Abdalla, M. Mohammed, H.S. Algarni, A. Alzahrani, A.A. Alsharef, R.F. Alhakeem, H.A.A. Jokhdar, A.M. Assiri); Centers for Disease Control and Prevention, Atlanta, Georgia, USA (C.M. Midgley, G.R. Abedi, X. Lu, A.M. Binder, A. Tamin, S. Lester, R.M. Dahl, S.K. Sakthivel, N.J. Thornburg, D.D. Erdman, J.T. Watson, S.I. Gerber); Princess Nourah Bint Abdulrahman University, Riyadh (W.M. Banjar); Prince Mohammed Bin Abdulaziz Hospital, Riyadh (A. Algwizani, F. Bafaqeeh, S.S. Ghazal)

DOI: <https://doi.org/10.3201/eid2504.181595>

Infection with Middle East respiratory syndrome (MERS) coronavirus (MERS-CoV) results in a wide range of clinical manifestations, from mild or asymptomatic illness to severe respiratory failure (1–8); infection has a reported mortality rate of 35% (9). Most MERS cases have been reported in older adults with underlying medical conditions (4,7). Asymptomatic or mild infections are typically reported in younger, healthy adults, including healthcare personnel (2,4). MERS-CoV transmission is commonly associated with exposure to symptomatic patients in health-care (1,2,10,11) or household (12) settings or with direct exposure to dromedary camels (13).

Infection prevention and control guidance for MERS-CoV in humans is partially based on severe acute respiratory syndrome (SARS) coronavirus infection dynamics (14,15); MERS-specific recommendations are incomplete. Investigations of virus shedding in MERS patients have demonstrated that MERS-CoV RNA can be detected in the respiratory tract for >1 month from illness onset (16,17); lower respiratory tract (LRT) specimens have higher (18–23) and often more prolonged RNA levels (17,18) than upper respiratory tract (URT) specimens; more severely ill patients typically have higher (18,21) and more prolonged (18) RNA levels; and MERS-CoV RNA is detected in the blood (17,22,24), serum (18,19,24), plasma (22,25,26), stool (19,23,27), and urine (17,19,23) of some patients. However, important knowledge gaps remain, particularly regarding shedding in association with clinical manifestations and host factors (4).

Serologic responses among MERS patients are incompletely understood; such data are critical for the development

---

<sup>1</sup>These first authors contributed equally to this article.

of vaccines, antibody therapeutics, and diagnostics. Investigations of MERS survivors have demonstrated that antibody titers are higher and longer-lived in more severely ill patients than in mildly ill patients (28), some of whom do not develop a detectable response (28,29). Antibodies are usually detected by day 21 after illness onset (30,31) and can persist for  $\geq 34$  months after infection (32). Data on case-patients who died, however, are limited (19,25,29).

To address gaps in viral and antibody kinetics, we longitudinally assessed 33 hospitalized MERS-CoV-infected patients. Our aim was to characterize MERS-CoV infection dynamics and antibody responses in relation to outcome, clinical manifestations, underlying medical conditions, and preillness exposures.

## Methods

### Patient Enrollment

The study population was drawn from a MERS referral hospital in Riyadh, Saudi Arabia. All patients testing positive for MERS-CoV locally by real-time reverse transcription PCR (rRT-PCR) assay and admitted to this hospital during August 1, 2015–August 31, 2016, were eligible for participation. All enrolled patients provided informed written consent.

### Data Collection

We reviewed epidemiologic interviews conducted at the time of case identification to include patient demographics, symptom history, and relevant exposures during the 2 weeks before onset. After patient death or discharge, we performed comprehensive medical chart reviews to collect medical history; symptoms before hospitalization; and daily information regarding symptoms during hospitalization, clinical course, treatments, medications, patient vital signs, diagnostic tests, and clinical outcome.

To assess MERS-CoV infection status, we retrospectively reviewed 3 data sources (as available) containing information on clinical diagnostic testing: 1) rRT-PCR request forms submitted to a regional testing facility; 2) hospital copies of corresponding results; and 3) if the hospital's clinical series was incomplete, rRT-PCR results from the Health Electronic Surveillance Network (33), a national platform for reporting notifiable diseases in Saudi Arabia. MERS-CoV clinical diagnostic testing had been performed on URT or LRT specimens typically collected every other day throughout hospitalization. Healthcare personnel collected LRT specimens from intubated patients and URT specimens otherwise. MERS-CoV results were positive, probable, or negative and, if available, cycle threshold ( $C_t$ ) values for MERS-CoV upstream of the envelope E (upE) or open reading frame (ORF) 1a (34); a probable finding indicated that only 1 of these 2 targets was detected.

### Laboratory Investigation

In addition to retrospectively reviewing clinical MERS-CoV test results, we periodically collected specimens throughout hospitalization for molecular and serologic testing at the US Centers for Disease Control and Prevention (CDC). Specimens were collected from respiratory and nonrespiratory sites, frozen at  $< -70^\circ\text{C}$ , and shipped on dry ice. Available specimens were URT (nasopharyngeal, oropharyngeal swab, or combined), LRT (sputum or tracheal aspirate), whole blood, serum, stool, and urine. Specimens were collected during days 1–42 postenrollment and additionally at 1 year for serum.

### Molecular Assays

Specimens were processed and screened by upE and N2 rRT-PCR. Specimens positive by only 1 RT-PCR were confirmed by N3 assay as previously described (35). MERS-CoV isolation was performed as previously described (36). We attempted full genome sequencing, as previously described (36), on the earliest available respiratory specimen (or serum, if not available) for each patient.

### Serologic Assays

Serum specimens with sufficient volume were tested using 4 CDC serologic assays: 1) microneutralization (MN) assay (37); 2) spike (S)-specific pseudoparticle neutralization assay (VSV-MERS-S); 3) S ELISA (Ig-specific) (38); and 4) nucleocapsid (N) ELISA (Ig-specific) (37,38). Additional description is available in Appendix 1 (<https://wwwnc.cdc.gov/EID/article/25/4/18-1595-App1.pdf>).

### Data Analysis

#### Definitions

We defined illness onset as the first day of reported symptoms consistent with MERS; for asymptomatic patients identified through routine contact investigations, we used the date of the first positive MERS-CoV test. We analyzed data relative to the date of illness onset (day 0). Patients were classified as having diabetes mellitus (DM) if there was a documented medical history of DM. Patients with multiple periods of hyperglycemia during hospitalization (random glucose readings  $> 200$  mg/dL), but with no documented medical history of DM, were considered as possible DM status.

Cardiac disease included congestive heart failure, coronary artery disease, or a history of myocardial infarction; reports of isolated hypertension were not included. Pulmonary disease included chronic obstructive pulmonary disease, asthma or reactive airway disease, or use of supplemental oxygen at home. Renal disease included reports of chronic kidney disease. Secondary exposure was defined as contact with MERS-CoV-infected persons in the 2 weeks

before illness onset. Primary exposure was defined as either reported direct camel contact or no known contact with MERS-CoV–infected persons.

### Illness Severity

We retrospectively categorized patients into 3 groups on the basis of the need for supplemental oxygen, ventilation, and clinical outcome. Group 1 (G1) received room air throughout hospitalization; group 2 (G2) required ventilator support (mechanical or nonmechanical) and survived; and group 3 (G3) required ventilator support and died.

### MERS-CoV Detection Period

To analyze duration of detectable MERS-CoV among survivors, we assessed the number of days from illness onset to negativity in clinical respiratory specimens tested at the regional testing facility, based on reports from the hospital or the Health Electronic Surveillance Network. We defined the day of MERS-CoV negativity as the first of  $\geq 2$  consecutive negative tests before discharge. These variables were based

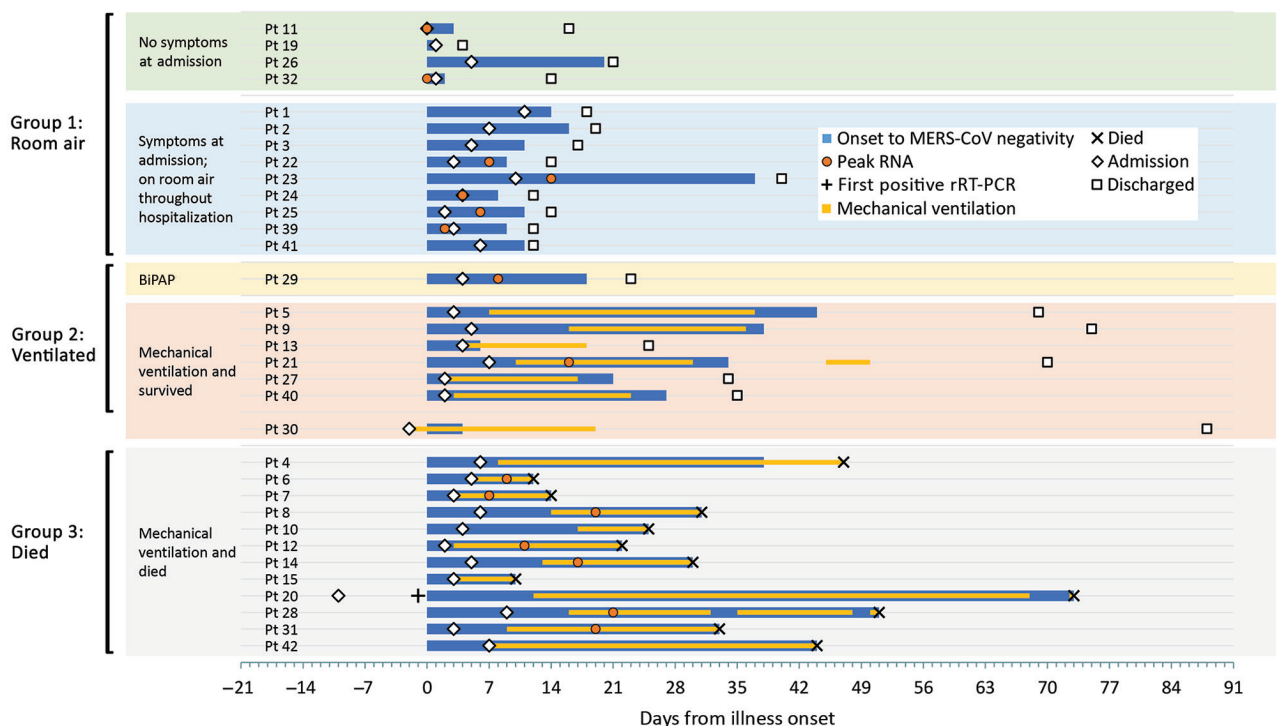
on either URT or LRT specimens. Because mildly ill patients did not provide LRT specimens, we only assessed detection in URT specimens when comparing severity groups.

### Prolonged MERS-CoV Detection

To assess prolonged MERS-CoV detection, we expressed time to negativity as a binary variable: patients with time to negativity  $\leq 11$  versus  $>11$  days. We chose this cutoff to reflect the median time to negativity among survivors. Given the low numbers of patients in our cohort, we also assessed 2 additional cut-offs for prolonged shedding to strengthen statistically significant findings:  $\leq 14$  versus  $>14$  days and  $\leq 21$  versus  $>21$  days.

### Viral Load

To approximate viral load in clinical results, we assessed MERS-CoV upE rRT-PCR  $C_t$  values determined at the regional testing facility. We used  $C_t$  values from LRT specimens to assess mechanically ventilated patients. We were able to identify the minimum  $C_t$  value (or peak RNA level)



**Figure 1.** Timeline of clinical course and MERS-CoV detection, by patient, Saudi Arabia, August 1, 2015–August 31, 2016. Findings are presented by time since illness onset (day 0). Patients are grouped by illness severity and outcome. For each patient, day of admission, discharge or death, period of mechanical ventilation (if applicable), and MERS-CoV detection are depicted. For a subset of patients with sufficient data, the peak RNA level (or the minimum upstream of the envelope cycle threshold value) is depicted. Peak RNA was based on upper respiratory tract specimen results among group 1 patients and Pt 29, and lower respiratory tract specimen results in group 2 and group 3 patients. The date of death is shown for group 3 patients. Pt 11 and Pt 32 did not report any symptoms throughout their hospitalization. Pt 30 was hospitalized and mechanically ventilated before MERS onset because of a road traffic accident; this patient was excluded from severity and clinical course analyses. Pt 23 has been described previously (36). The first positive MERS-CoV rRT-PCR for Pt 20 was collected 1 day before symptom onset. BiPAP, bilevel positive airway pressure; CoV, coronavirus; MERS, Middle East respiratory syndrome; Pt, patient; rRT-PCR, real-time reverse transcription PCR.

**Table 1.** Characteristics of MERS-CoV–infected patients, by clinical severity outcome, Saudi Arabia, August 1, 2015–August 31, 2016\*

Characteristic	No. (%) patients			p value†	
	Group 1, n = 13	Group 2, n = 7	Group 3, n = 12	Mortality, G1 and G2 vs. G3	Ventilation support, G1 vs. G2
<b>Demographics</b>					
<b>Sex</b>					
M	7 (54)	6 (86)	7 (58)	0.724	0.329
F	6 (46)	1 (14)	5 (42)		
<b>Nationality</b>					
Saudi	5 (38)	6 (86)	10 (83)	0.139	0.070
Non-Saudi	8 (62)	1 (14)	2 (17)		
<b>Age group, y</b>					
25–44	10 (77)	4 (57)	0	<0.001	0.548
45–64	3 (23)	2 (29)	7 (58)		
≥65	0	1 (14)	5 (42)		
Median age (range), y	33 (26–62)	41 (30–73)	62 (55–78)	<0.001	0.047
<b>Underlying conditions</b>					
None reported	10 (77)	0	0	0.004	0.003
Any reported underlying condition	3 (23)	7 (100)	11 (92)		
Unknown underlying condition	0	0	1 (8)		
DM‡	3 (23)	4 (80)	11 (100)	0.001	0.047
DM and possible DM§	3 (23)	6 (86)	12 (100)	0.002	0.047
Hypertension	1 (8)	2 (29)	11 (100)	<0.001	0.270
Cardiac disease¶	0	0	6 (55)	0.001	NA
Pulmonary disease#	0	2 (29)	2 (18)	0.602	0.111
On oxygen at home**	0	1 (14)	1 (9)	1.000	0.350
Renal disease††	0	0	3 (27)	0.001	NA
Cardiac, pulmonary, or renal disease	0	2 (29)	9 (82)	<0.001	0.111
History of cerebrovascular accident	1 (8)	0	3 (27)	0.318	1.000
Cancer in previous 12 mo	0	0	1 (9)	0.355	NA
<b>Possible preillness exposure</b>					
Secondary,‡‡ healthcare personnel	5 (38)	0	0	NA	NA
Secondary, household contact	4 (31)	1 (14)	1 (8)	NA	NA
Secondary, hospital visitor	2 (15)	1 (14)	2 (17)	NA	NA
Secondary, hospital inpatient	0	0	3 (25)	NA	NA
Any secondary exposure	11 (85)	2 (29)	6 (50)	0.249	0.022
Direct camel contact	0	0	2 (17)		
Multiple possible exposures	0	1 (14)	0		
No recognized risks§§	2 (15)	4 (57)	4 (33)		
<b>Primary vs. secondary exposure¶¶</b>					
Primary###	2 (15)	4 (67)	6 (50)	0.452	0.046
Secondary	11 (85)	2 (33)	6 (50)		
<b>Symptoms before admission</b>					
Absence of symptoms	4 (31)	0	0	NA	NA
Any reported symptom	9 (69)	7 (100)	12 (100)	NA	NA
Fever	8 (62)	6 (86)	11 (92)	0.212	0.354
Cough	7 (54)	6 (86)	10 (83)	0.422	0.329
Dyspnea	1 (8)	7 (100)	11 (92)	0.008	<0.001
Vomiting	4 (31)	2 (29)	2 (17)	0.676	1.000
Diarrhea	2 (15)	1 (14)	4 (33)	0.379	1.000
Sore throat	2 (15)	1 (14)	1 (8)	1.000	1.000
Rhinorrhea	1 (8)	1 (14)	1 (8)	1.000	1.000

\*Group 1, on room air; group 2, ventilated but survived; group 3, died. CoV, coronavirus; DM, diabetes mellitus; MERS, Middle East respiratory syndrome; NA, not applicable.

†p values are for Fisher exact or Kruskal–Wallis tests comparing long-term and short-term.

‡Based on documented medical history of DM; comparison excludes 3 patients with possible DM status; group 1, n = 13; group 2, n = 5; group 3, n = 11.

§Includes 18 patients with a documented history of DM and 3 patients with possible DM status who exhibited multiple periods of hyperglycemia (random glucose readings >395 mg/dL) but who had no documented history of DM.

¶Cardiac disease includes congestive heart failure, coronary artery disease, a history of coronary artery bypass, or a history of myocardial infarction. Reports of isolated hypertension were not included.

#Pulmonary disease includes chronic obstructive pulmonary disease, asthma or reactive airway disease, or use of supplemental oxygen at home.

\*\*Patients who were on supplemental oxygen at home (both patients were on bilevel positive airway pressure) required mechanical ventilation when hospitalized.

††Renal disease includes reports of chronic kidney disease.

‡‡Secondary exposure defined as reported contact with a known MERS case-patient.

§§No recognized risks defined as no reported contact with a known MERS case-patient or camel (direct or indirect contact).

¶¶Comparison excludes 1 patient with multiple exposures; group 2, n = 6.

###Primary exposure defined as no reported contact with a known MERS case-patient; includes direct camel contact and patients with no recognized risks.

**Table 2.** Demographic and exposure characteristics of survivors with prolonged MERS-CoV detection, Saudi Arabia, August 1, 2015–August 31, 2016\*

Characteristic	Total, N = 19	Days to negativity		p value†
		≤11 d, n = 11	>11 d, n = 8	
<b>Demographics</b>				
<b>Sex</b>				
M	13/19 (68)	6/11 (55)	7/8 (88)	0.177
F	6/19 (32)	5/11 (45)	1/8 (12)	
<b>Nationality</b>				
Saudi	10/19 (53)	5/11 (45)	5/8 (63)	0.650
Non-Saudi	9/19 (47)	6/11 (55)	3/8 (37)	
<b>Age group, y</b>				
25–44	14/19 (74)	9/11 (82)	5/8 (63)	0.262
45–64	4/19 (21)	1/11 (9)	3/8 (38)	
≥65	1/19 (5)	1/11 (9)	0/8	
Median age, y (range)	36 (26–73)	30 (26–73)	40 (27–62)	0.083
<b>Underlying conditions</b>				
None reported	10/19 (53)	8/11 (73)	2/8 (25)	0.070
Any reported underlying condition	9/19 (47)	3/11 (27)	6/8 (75)	
DM‡	7/18 (39)	2/11 (20)	5/7 (71)	0.049
DM and possible DM§	8/19 (42)	2/11 (20)	6/8 (75)	0.024
Hypertension	3/19 (16)	1/11 (9)	2/8 (25)	0.546
Cardiac disease¶	1/19 (5)	1/11 (9)	0/8	1.000
Pulmonary disease#	1/19 (5)	1/11 (9)	0/8	1.000
On oxygen at home**	1/19 (5)	1/11 (9)	0/8	1.000
<b>Possible preillness exposure</b>				
Secondary, †† healthcare personnel	5/19 (26)	4/11 (36)	1/8 (13)	NA
Secondary, household contact	5/19 (26)	3/11 (27)	2/8 (25)	NA
Secondary, hospital visitor	3/19 (16)	0/11	3/8 (38)	NA
Secondary, hospital inpatient	0/19	0/11	0/8	NA
Any secondary exposure	13/19 (68)	7/11 (64)	6/8 (75)	0.796
Direct camel contact	0/19	0/11	0/8	
Multiple possible exposures	2/19 (11)	1/11 (9)	1/8 (13)	
No recognized risks‡‡	4/19 (21)	3/11 (27)	1/8 (13)	
<b>Primary vs. secondary exposure§§</b>				
Primary¶¶	4/17 (24)	3/10 (30)	1/7 (14)	0.603
Secondary	13/17 (78)	7/10 (70)	6/7 (86)	

\*Values are no. (%) patients except as indicated. CoV, coronavirus; DM, diabetes mellitus; MERS, Middle East respiratory syndrome; NA, not applicable. †p values are for Fisher exact or Kruskal–Wallis tests comparing long-term and short-term.

‡Based on documented medical history of DM; comparison excludes 1 patient with possible DM status; total, N = 18; prolonged shedding >11 days, n = 7.

§Includes 7 patients with a documented history of DM and 1 patient (of possible DM status) who had no documented history of DM but exhibited multiple periods of hyperglycemia (>200 mg/dL) during hospitalization, with a maximum random glucose reading of 404 mg/dL.

¶Cardiac disease includes congestive heart failure, coronary artery disease, a history of coronary artery bypass, or a history of myocardial infarction.

Reports of isolated hypertension were not included.

#Pulmonary disease includes chronic obstructive pulmonary disease, asthma or reactive airway disease, or use of supplemental oxygen at home.

\*\*Patient who was on supplemental oxygen (bilevel positive airway pressure) at home required mechanical ventilation when hospitalized.

††Secondary exposure defined as reported contact with a known MERS case-patient.

‡‡No recognized risks defined as no reported contact with a known MERS case-patient or camel (direct or indirect contact).

§§Comparison excludes 2 patients with multiple exposures; total, N = 17; shed ≤11 days, n = 10; shed >11 days, n = 7.

¶¶Primary exposure defined as no reported contact with a known MERS case-patient; includes direct camel contact and patients with no recognized risks.

in a subset of patients. For specimens submitted to CDC, we estimated viral load on the basis of the upE C<sub>t</sub> value (or N2 C<sub>t</sub> value if upE testing was negative and N3 was positive).

### Antibody Responses

We compared the proportion of serum specimens with detectable antibody responses between survivors and patients who died. We assessed specimens collected <14, <21, and <28 days after illness onset; during 28–56 days after onset; and then at 1 year.

### Statistical Analyses

We summarized patient characteristics by illness severity and, among survivors, by time to MERS-CoV negativity.

We used Fisher exact, Kruskal–Wallis, or log rank tests to compare groups and exact logistic regression for multivariable analysis. We compared antibody titers with estimated viral load in different specimen types by using the Spearman test for correlation. All data were analyzed using Microsoft Excel 2016 (<https://products.office.com>) and SAS version 9.4 (<https://www.sas.com>).

## Results

### Cohort Description

During August 1, 2015–August 31, 2016, a total of 33 MERS-CoV–infected patients were enrolled. Among these, 4 were classified as asymptomatic on admission, and

**Table 3.** Clinical features of survivors with prolonged MERS-CoV detection, Saudi Arabia, August 1, 2015–August 31, 2016\*

Clinical feature	Total, N = 19	Days to negativity		p value†
		≤11 d, n = 11	>11 d, n = 8	
<b>Symptoms before admission‡</b>				
No symptoms	4/18 (21)	3/10 (30)	1/8 (13)	0.603
Fever	13/18 (72)	7/10 (70)	6/8 (75)	1.000
Cough	11/18 (61)	5/10 (50)	6/8 (75)	0.367
Dyspnea	6/18 (33)	2/10 (20)	4/8 (50)	0.321
Vomiting	5/18 (28)	2/10 (20)	3/8 (38)	0.608
Diarrhea	3/18 (17)	0/10	3/8 (38)	0.069
<b>Clinical course‡</b>				
Room air	13/18 (72)	9/10 (90)	4/8 (50)	0.118
Ventilator support§	5/18 (28)	1/10 (10)	4/8 (50)	
Abnormal chest radiograph	9/18 (50)	4/10 (40)	5/8 (63)	0.637
<b>Medications¶</b>				
Ribavirin plus peg-IFN $\alpha$	2/19 (11)	0/11	2/8 (25)	0.164
Oseltamivir	12/19 (63)	6/11 (55)	6/8 (75)	0.633
Antibiotics	15/19 (79)	8/11 (73)	7/8 (88)	0.603
Parenteral steroids	3/19 (16)	0/11	3/8 (38)	0.058
Group 2 only#	3/5 (60)	0/1	3/4 (75)	0.400
Inhaled steroids	2/19 (11)	0/11	2/8 (25)	0.164
Group 2 only#	2/5 (40)	0/1	2/4 (50)	1.000
Bronchodilators	5/19 (26)	2/11 (18)	3/8 (38)	0.603
Antipyretics	9/19 (47)	6/11 (55)	3/8 (38)	0.650

\*Values are no. (%) patients except as indicated. Group 2, ventilated but survived; MERS-CoV, Middle East respiratory syndrome coronavirus.

†p values are for Fisher exact or Kruskal–Wallis tests comparing long-term and short-term.

‡Excludes patient no. 30, who was admitted and intubated before onset because of injuries sustained in a road traffic accident (N = 18).

§Includes mechanical or nonmechanical (i.e., bilevel positive airway pressure) ventilation.

¶Medication given during MERS-CoV detection period (on the basis of diagnostic testing in respiratory specimens).

#Assessing steroid use among G2 patients only.

9 reported symptoms but remained on room air during hospitalization (Figure 1; Appendix 1 Figure 1; Appendix 2 Table 1, <https://wwwnc.cdc.gov/EID/article/25/4/18-1595-App1.xlsx>); 10 of these 13 patients were identified through contact tracing (5 were healthcare personnel) and were hospitalized to ensure isolation. Twenty patients required ventilator support (1 bilevel positive airway pressure [BiPAP] and 19 mechanical ventilation), 12 of whom died. We grouped 13 patients into G1, 7 into G2, and 12 into G3; 1 patient (patient [Pt] 30) was initially hospitalized and intubated after a road traffic accident, before MERS onset, and was excluded from analyses regarding severity and clinical course resulting from MERS-CoV infection.

Patient ages ranged from 26 to 78 years, and 63% were male (Appendix 2 Table 1). Twenty-three (70%) patients had  $\geq 1$  underlying medical condition, 19 of whom had documented DM; an additional 3 patients were considered of possible DM status because they exhibited multiple periods of hyperglycemia (random glucose readings  $>395$  mg/dL) but had no documented history of DM. Death was associated with older age ( $p < 0.001$ ), DM ( $p = 0.001$ ), hypertension ( $p < 0.001$ ), cardiac disease ( $p = 0.001$ ), or renal disease ( $p = 0.001$ ) (Table 1). Among survivors, ventilator support was associated with DM ( $p = 0.047$ ), older age ( $p = 0.047$ ), or preillness primary exposure ( $p = 0.046$ ) (Table 1). Among the 12 patients with a primary exposure, 8 had DM (Appendix 2 Table 1).

Clinical course and time to MERS-CoV negativity (in clinical respiratory specimens) is depicted according

to date of illness onset (Figure 1; Appendix 2 Table 2). Time to admission (median 4 days) did not differ between groups. Time to MERS-CoV negativity among survivors ranged from day 1 to day 44 after illness onset and was typically longer among G2 than G1 patients. Twelve of 13 patients in G1 were discharged by day 21 after onset; the mildly ill patient who was in the hospital until day 40 after onset (Pt 23) has been described previously (36). Duration of hospitalization for G2 patients was 19–70 days, and duration of intubation was 14–31 days. G3 patients died 10–73 days after onset.

### Daily Symptoms

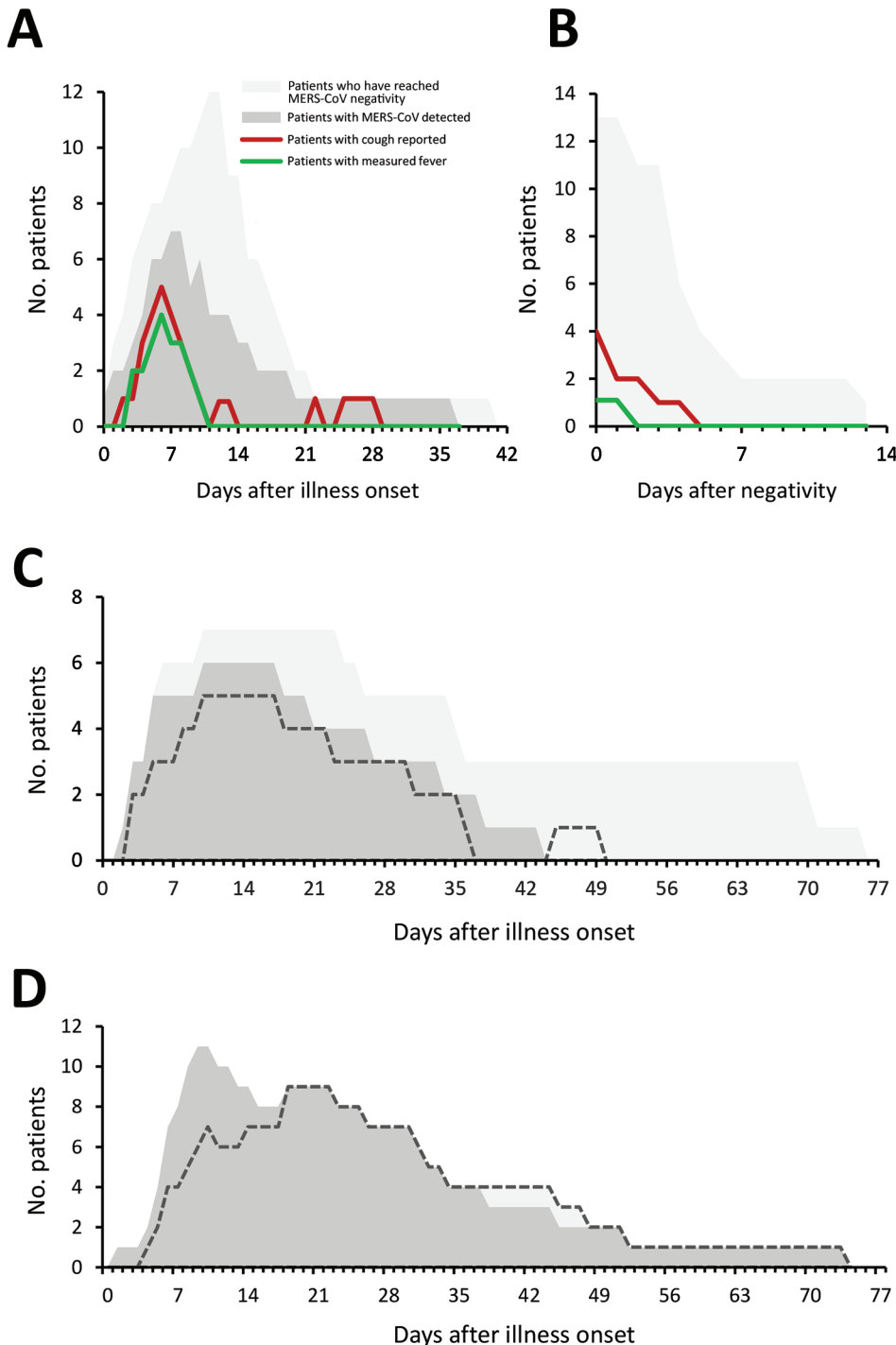
Common symptoms before admission were fever (78%), cough (72%), and dyspnea (59%) (Table 1). Dyspnea before admission was associated with a more severe outcome ( $p < 0.001$ ). Among the 4 patients who reported no symptoms on admission, 2 were mildly symptomatic during hospitalization (Appendix 2 Table 3).

Among G1 patients, fever and cough were commonly reported, and the proportion of patients with either symptom appeared to align with the proportion who concurrently had detectable MERS-CoV in clinical respiratory specimens (Figure 2, panel A). Cough persisted in 5 G1 patients for  $\leq 4$  days after MERS-CoV negativity (Figure 2, panel B). Chest radiographs of 4 G1 patients were described as abnormal, typically with unilateral findings (Appendix 2 Table 4). Oxygen saturation remained  $>92\%$  in G1 patients. Among G2 patients,

the proportion of patients mechanically ventilated appeared to align with the proportion who had detectable MERS-CoV in the LRT (Figure 2, panel C); only 1 G2 patient (Pt 13, who had underlying pulmonary disease) was MERS-CoV–positive for a short period but required extended mechanical ventilation. Among the 12 G3 patients, 11 were MERS-CoV RNA–positive until death (Figure 2, panel D).

**MERS-CoV RNA in Respiratory Specimens**

MERS-CoV upE C<sub>t</sub> values from clinical diagnostic reports are depicted in Figure 3. MERS-CoV RNA levels in the URT of most G1 patients peaked in the first week after onset (Figure 3, panel D). Among patients who died, RNA levels peaked in the LRT during weeks 2 and 3 (Figure 3, panel E), after which RNA levels typically began to decrease (Figure 3, panel C); 4 patients died with negative or probable rRT-PCR results.



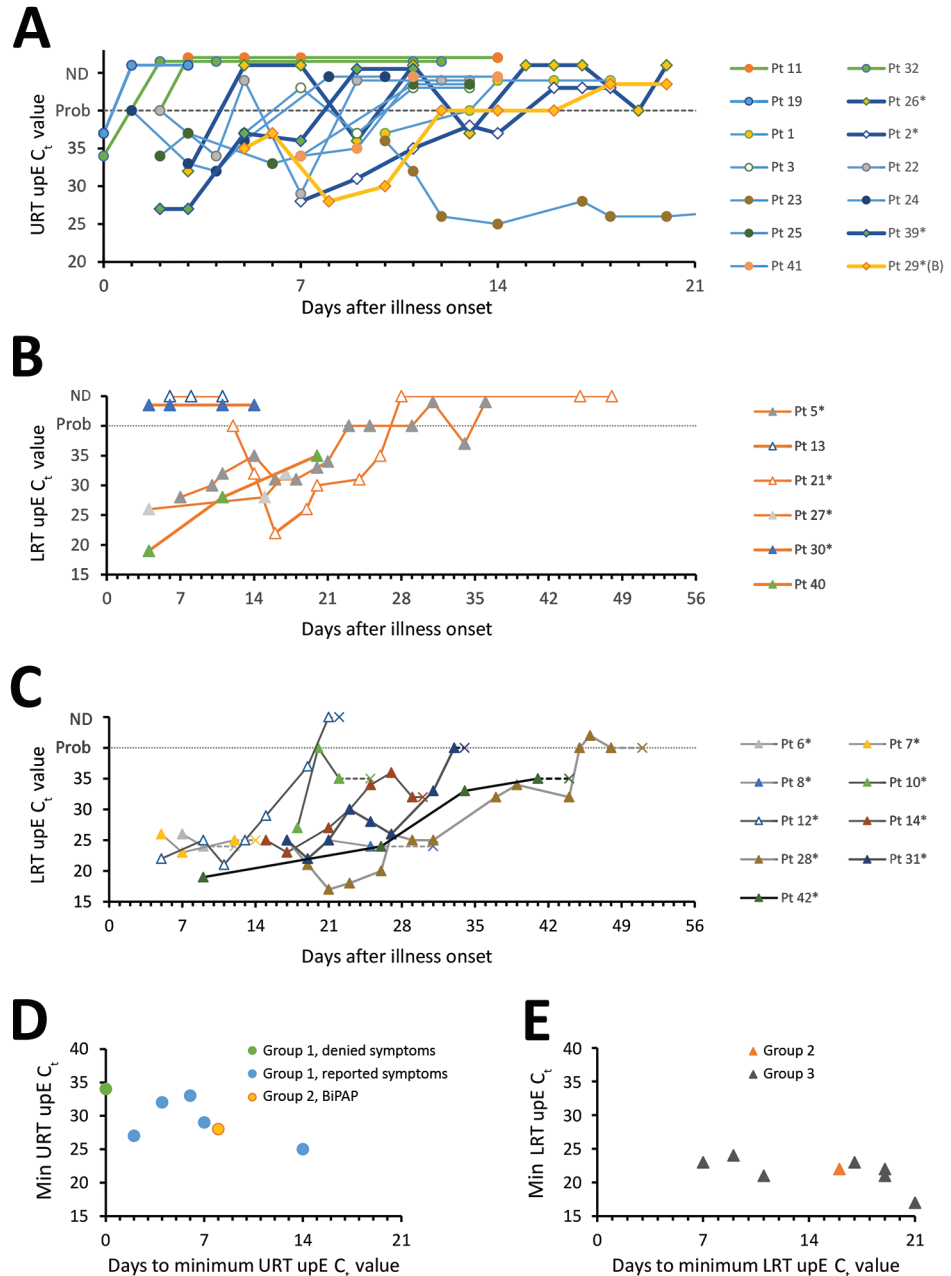
**Figure 2.** Symptom progression and MERS-CoV detection during hospitalization at a MERS referral hospital, Saudi Arabia, August 1, 2015–August 31, 2016. Each panel depicts the number of patients hospitalized on a given day for each category shown; MERS-CoV detection is based on the clinical diagnostic reports in the upper or lower respiratory tract. A, B) Number of group 1 patients with fever (measured oral temperature >38.0°C or measured axillary temperature >37.5°C) and reported cough during (A) and after (B) the MERS-CoV detection period. C, D) Number of patients intubated (dashed lines) and the number of patients who were positive for MERS-CoV on a given day for group 2 (C) and group 3 (D). MERS, Middle East respiratory syndrome; MERS-CoV, Middle East respiratory syndrome coronavirus. Group 1, on room air; group 2, ventilated but survived; group 3, died.

We next assessed characteristics of survivors with prolonged MERS-CoV detection periods (on the basis of clinical diagnostic reports of URT specimens) (Tables 2, 3; Appendix 2 Tables 5, 6). Patients who reached negativity >11 days after onset were more likely to have DM than patients who cleared the virus earlier ( $p = 0.049$ ; when adjusting for severity group,  $p = 0.061$ ) (Tables 2, 3). This association was also observed in patients who reached negativity >14 days after onset ( $p = 0.013$ ) and when adjusting for severity group ( $p = 0.030$ ) (Appendix

2 Table 5). Evidence for this association was stronger when patients with DM and possible DM were combined (Tables 2, 3; Appendix 2 Table 5). No other underlying medical conditions were associated with prolonged detection. Survivors with prolonged detection (>14 or >21 days) were also more likely to require ventilator support (Appendix 2 Table 5), but this was not significant when adjusting for DM.

Based on respiratory specimens submitted to CDC (Appendix 1 Figures 2, 3), full-genome sequences from 13

**Figure 3.** MERS-CoV RNA detection in the respiratory tract, based on clinical diagnostic reports, among MERS-CoV patients, Saudi Arabia, August 1, 2015–August 31, 2016. A–C) UpE real-time reverse transcription PCR  $C_t$  values of group 1 (A), 2 (B), and 3 (C) patients, by days since illness onset (day 0). Panel A depicts URT specimens, and panels B and C depict LRT specimens collected during MV; Pt 29 (a G2 patient who received BiPAP ventilation) is depicted in panel A because only URT specimens were collected for this patient. The dashed line represents the limit of detection, above which specimens were considered MERS-CoV–negative or not detected. Probable results, meaning that only 1 of 2 real-time reverse transcription PCR assays were positive, are depicted on the dashed line for graphing purposes. Patients with limited  $C_t$  values or unknown specimen types are not depicted. Patients 11 and 32 did not report any symptoms throughout their illness. Pt 30 is depicted alongside G2 patients. Pt 23 reached negativity 37 days after illness onset, as described previously (36). \*Indicates patients with a documented history of diabetes mellitus. D, E) Minimum  $C_t$  values reported, which was determined for a subset of patients with sufficient data. Panel D depicts URT specimen results among group 1 patients and Pt 29; panel E depicts LRT specimen results in group 2 and 3 patients, collected from the LRT during MV. Group 1, on room air; group 2, ventilated but survived; group 3, died. BiPAP, bilevel positive airway pressure;  $C_t$ , cycle threshold; CoV, coronavirus; LRT, lower respiratory tract; MERS, Middle East respiratory syndrome; min, minimum; MV, mechanical ventilation; Pt, patient; URT, upper respiratory tract; upE, upstream of the envelope.



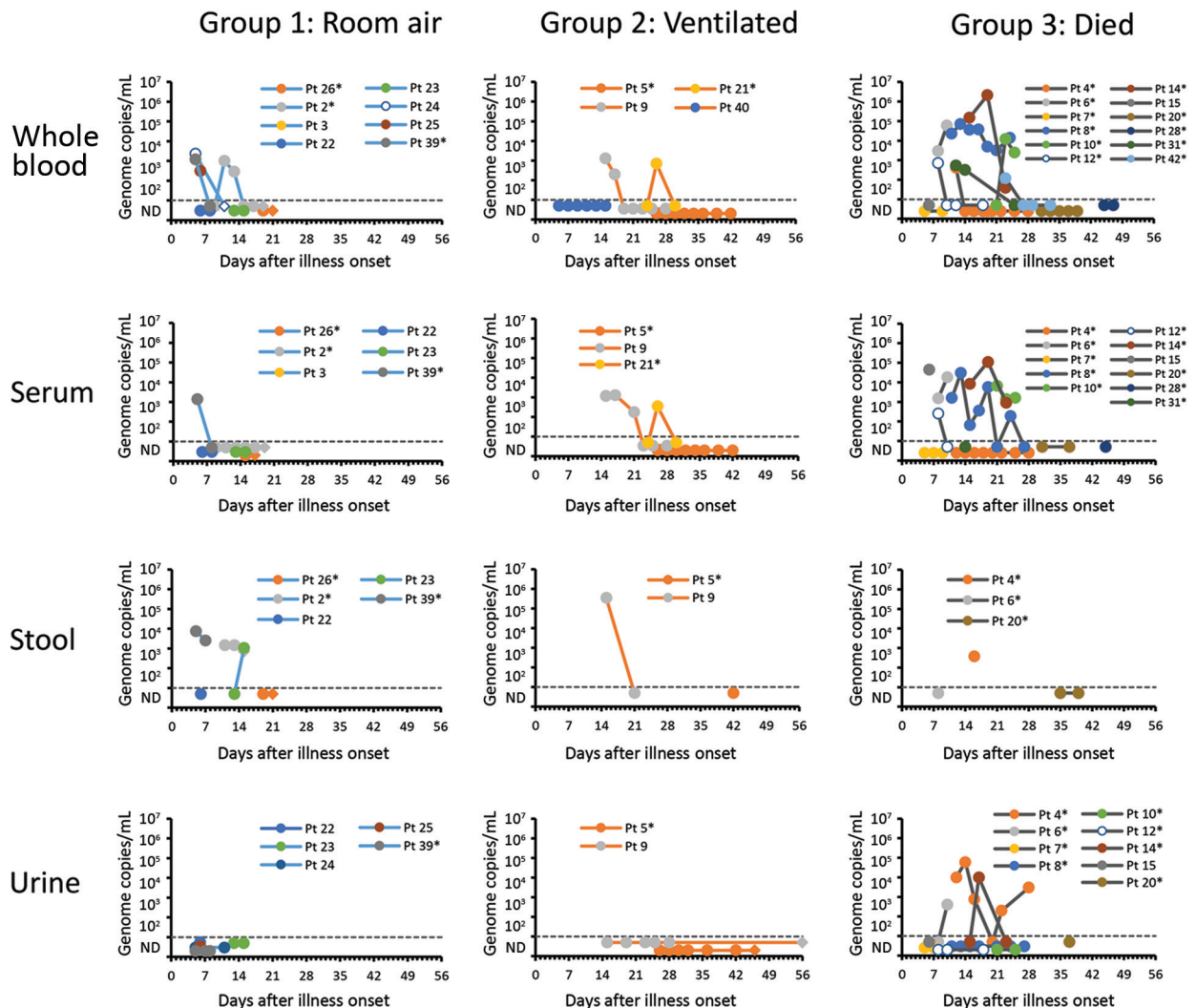


patients belonged to the NRC-2015 (39) clade (or lineage 5 [40]) (GenBank accession nos. MG520075 and MG757593–MG757605). Viable MERS-CoV was isolated from 3 of 37 URT specimens; 2 specimens were from a mildly ill patient (Pt 23) collected on days 13 and 15 after onset (described previously [36]), and 1 specimen was collected on day 13 from a patient who subsequently died (Pt 8).

### MERS-CoV RNA in Nonrespiratory Specimens

CDC received 252 nonrespiratory specimens for MERS-CoV testing, collected from 31 patients <3 months after

onset; 7 patients (21 specimens, all MERS-CoV–negative) were excluded because specimens were only collected after the virus had been cleared from the respiratory tract. Fourteen of 24 patients had MERS-CoV RNA detected in whole blood, 9/20 in serum, 5/10 in stool, and 3/16 in urine (Figure 4; Appendix 2 Table 2). In G1, MERS-CoV RNA was detected in the whole blood or serum of 4/8 patients ( $\leq 2.3 \times 10^3$  copies/mL) for  $\leq 13$  days and in the stool of 3/5 patients ( $\leq 7.5 \times 10^3$  copies/mL) for  $\leq 15$  days; only 1 patient with RNA-positive stool had concurrent gastrointestinal symptoms. Specimens were limited in G2, but MERS-CoV RNA



**Figure 4.** Estimated viral loads in non–respiratory tract specimens collected from hospitalized MERS-CoV patients, Saudi Arabia, August 1, 2015–August 31, 2016, and submitted to the US Centers for Disease Control and Prevention. Specimen types are shown by severity group. Estimated viral loads are based on upstream of the envelope (upE) real-time reverse transcription PCR cycle threshold values, or N2 cycle threshold values if the upE real-time reverse transcription PCR was negative. The dashed line represents the limit of detection, below which specimens were considered MERS-CoV–negative or not detected. Round data points represent specimens collected during the MERS-CoV detection period (defined by clinical results from respiratory specimens). Diamond data points represent specimens collected after the MERS-CoV detection period (defined by clinical results from respiratory specimens); no specimens were positive for MERS-CoV after the detection period. \*Patients with a documented history of diabetes mellitus. MERS-CoV, Middle East respiratory syndrome coronavirus; Pt, patient.

was detected in the blood of 2/4 patients ( $\leq 1.3 \times 10^3$  copies/mL) and the stool of 1/2 ( $3.5 \times 10^5$  copies/mL). In G3, high viral loads were detected in the whole blood or serum of 9 patients, reaching as high as  $2.1 \times 10^6$  copies/mL. All 3 patients with MERS-CoV RNA detected in urine died ( $\leq 6.0 \times 10^4$  copies/mL); 1 patient had chronic kidney disease. We attempted but were unable to isolate live MERS-CoV from 5 stool specimens and 3 urine specimens with elevated MERS-CoV RNA levels.

### Serum Antibody Responses

CDC tested 74 serum specimens collected  $\leq 56$  days after onset; 41 specimens were from 16 survivors, and 33 specimens were from 11 case-patients who died. Time between onset and collection did not differ between patient groups (survived, median 15 days, range 1–50 days; died, median 17 days, range 5–45 days). Four specimens from 4 survivors were collected  $\approx 1$  year after illness onset. Time courses of antibody responses are shown by patient in Figure 5 and Appendix 1 Figures 4–6.

Among case-patients who died, 5/6 had detectable neutralizing responses during the first 2 weeks of illness; by week 3, all of these case-patients with available specimens had detectable antibodies by MN (Table 4). Notably, 1 of these case-patients exhibited a 9-day delay in the development of a detectable response by VSV-MERS-S pseudoparticle assay compared with MN (Appendix 1 Figure 7); the detectable S-specific response by ELISA was also delayed for this patient. Overall, the 2 neutralizing assays were better correlated in specimens from survivors than from patients who died (Appendix 1 Figure 8).

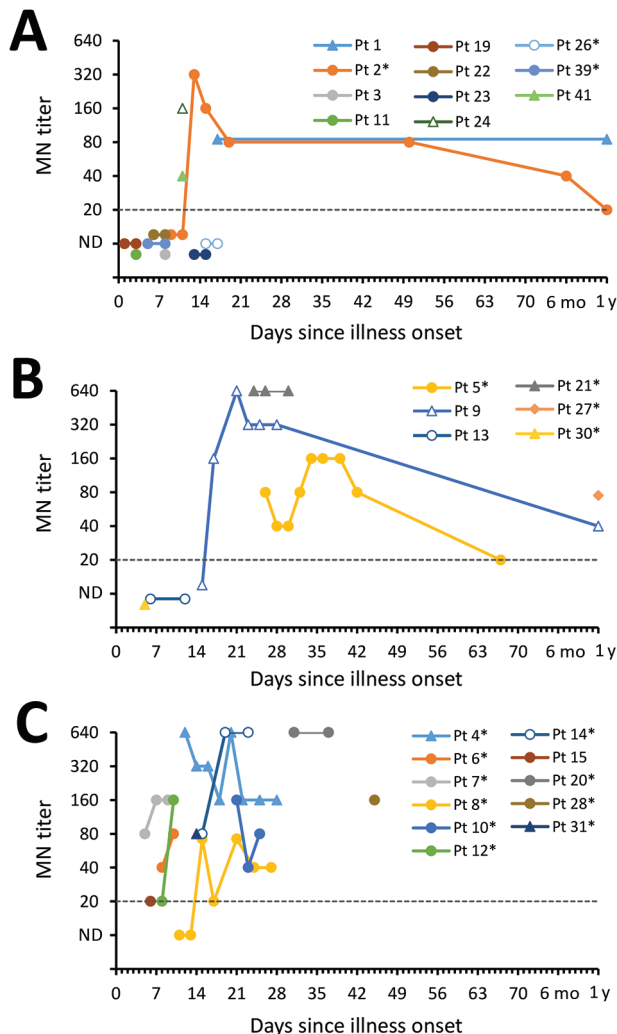
Survivors and case-patients who died had responses by N- and S-ELISA (Table 4), although detectable N-specific responses preceded S-specific responses in 3 patients. By 1 year, N-specific responses had waned in 2 of the 4 patients tested.

### Co-detection of Antibodies and Viral RNA

We next compared neutralizing antibody titers to estimated viral load in the same serum specimen and to estimated viral load in respiratory specimens collected on the same day (Figure 6; Appendix 1 Figure 9). Among specimens with detectable antibodies by MN (Figure 6), viral RNA was often co-detected in serum, URT, and LRT specimens, even beyond 21 days after onset, when antibody titers were typically higher. Co-detection in serum ( $p = 0.032$ ) and URT ( $p = 0.003$ ) specimens was observed more frequently among patients who died than among those who survived.

### Discussion

We characterized MERS-CoV infection dynamics by patient demographics, underlying medical conditions, exposure route, and symptom progression and antibody responses by clinical outcome. Our findings demonstrate a possible association between DM and prolonged MERS-CoV RNA detection in survivors, when adjusting for severity. The prevalence of DM is high in Saudi Arabia; estimated national prevalence ranges from 14.4% (41) to 18.6% (42). DM is frequently reported among MERS case-patients (7,43), is a risk factor for illness among those with primary exposures (13), and has been associated with increased severity (44) and mortality (26,44), as was observed in our study. DM was less frequently reported in MERS patients



**Figure 5.** MN antibody titers of serum collected from MERS-CoV patients, by patient, severity group, and days since illness onset (day 0), Saudi Arabia, August 1, 2015–August 31, 2016. A) Group 1 patients; B) group 2 patients; C) group 3 patients. The dashed line represents the limit of detection, below which specimens were considered not to have detectable antibodies. Pt 11 did not report any symptoms throughout their illness. Pt 30 was hospitalized and mechanically ventilated before MERS onset because of a road traffic accident. \*Patients with documented history of diabetes mellitus. MERS-CoV, Middle East respiratory syndrome coronavirus; MN, microneutralization assay; ND, antibodies not detected; Pt, patient.

**Table 4.** Specimens and MERS-CoV–infected patients with detectable Abs, by time since illness onset and outcome, Saudi Arabia, August 1, 2015–August 31, 2016\*

Outcome	Days since onset	No. specimens with Abs detected/no. tested				No. patients† with Abs detected/no. tested			
		MN	VSV-MERS-S	S ELISA	N ELISA	MN	VSV-MERS-S	S ELISA	N ELISA
Survived	<14	3/17	4/16	5/17	7/17	3/11	4/10	4/11	5/11
	14–20	4/8	4/8	4/8	6/8	3/5	3/5	3/5	4/5
	21–27	6/6	5/5	6/6	6/6	3/3	3/3	3/3	3/3
	28–55	10/10	10/10	10/10	10/10	4/4	4/4	4/4	4/4
	1 y	4/4	4/4	4/4	2/4	4/4	4/4	4/4	2/4
Died	<14	9/11	8/11	5/11	8/11	5/6	5/6	3/6	4/6
	14–20	9/9	6/8	7/9	9/9	4/4	2/3	4/4	4/4
	21–27	9/9	8/9	8/9	9/9	4/4	4/4	4/4	4/4
	28–55	4/4	4/4	4/4	4/4	3/3	3/3	3/3	3/3
	1 y	NA	NA	NA	NA	NA	NA	NA	NA

\*Abs, antibodies; MERS-CoV, Middle East respiratory syndrome coronavirus; MN, microneutralization assay; N ELISA, nucleocapsid ELISA; S ELISA, spike ELISA; VSV-MERS-S, pseudoparticle neutralization assay; NA, not available.

†Number of patients represents those with available specimens for a given period. Specimens were not available from all patients during all periods. Some specimens were not tested by VSV-MERS-S pseudoparticle assay because of insufficient volume.

from South Korea (5,45–47) in 2015, and its association with increased severity in that setting was less clear (5,45). In our investigation, factors affecting DM management before infection were unknown.

Information about MERS-CoV detection and antibody responses in case-patients who died has been limited (19,24–26,29). In our study, patients who died had robust neutralizing antibody responses during the second and third weeks of illness, but this response was not sufficient for patient recovery. During this same period (weeks 2–3), RNA levels peaked in the LRT of these case-patients, suggesting that antibodies might not be sufficient for virus clearance. Antibodies were more often co-detected with viral RNA in the serum and URT of case-patients who died compared with survivors. Co-detection of antibodies and RNA has been described previously but not by patient outcome (19,25). Six patients who died had MERS-CoV RNA in their serum, despite the presence of neutralizing antibodies, and 3 had RNA in urine. Detection of MERS-CoV in blood or serum has previously been associated with need for supplemental oxygen (18), the need for mechanical ventilation (24), and death (24,26). Although we detected RNA in the blood or serum of all severity groups, estimated viral loads might have been higher in patients who died than survivors; this was difficult to assess statistically because of limited specimen collection and variability in timing of collection. In 4/12 patients who died, RNA levels in the LRT decreased to low or undetectable before death, suggesting that viral replication in the respiratory tract might variably or indirectly contribute to outcome.

Previous studies using MN tests (19) or S-specific assays (25,31) have suggested that some case-patients who die might exhibit a delayed MERS-CoV–specific antibody response. Although most patients in our study developed early and concomitant MN and VSV-MERS-S (pseudoparticle assays) responses, 1 case-patient who died exhibited a prominent delay in detectable VSV-MERS-S and S ELISA responses compared with MN. This finding warrants

further investigation and might suggest that the MN assay targets antibodies functioning beyond S-specific viral entry. Although our neutralizing assays targeted 2 different MERS-CoV strains, no variations exist within the receptor binding sites of these viruses (Appendix 1 Figure 10). Compared with these 2 viruses, the virus strain used in our S ELISA (EMC) differs in S by 2–3 aa, which is unlikely to confer a notable difference in binding during a polyclonal antibody response.

We further characterized virus shedding among mildly ill patients (i.e., those who did not require supplemental oxygen while hospitalized and who might typically be isolated at home) and found that RNA levels in the URT peaked during the first week of illness among this group, not in the second week as previously suggested (18), although LRT specimens were not available for included patients. Similar to previous descriptions, we detected MERS-CoV RNA in the blood or serum of some mildly ill patients (18,25), but we also detected RNA in stool up to 15 days after illness onset; viable virus was not isolated from these specimen types. MERS-CoV RNA has been reported in stool previously (19), but the severity of illness and the time since illness onset in these patients were unknown. Replication in the intestinal tract has been postulated (27), but its role in pathogenesis or transmission remains unclear.

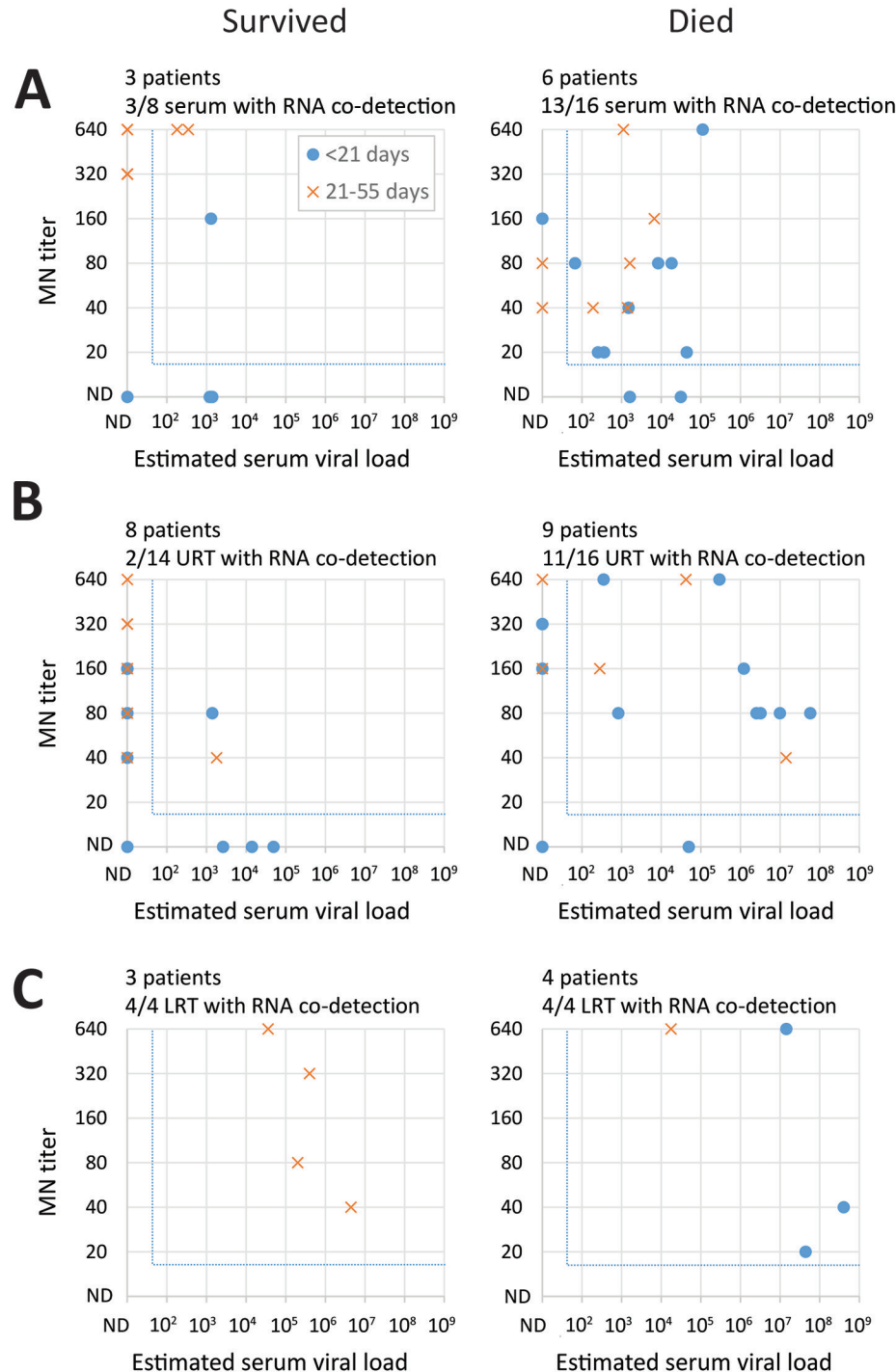
We characterized symptom progression in mildly symptomatic patients and found that fever and cough (when present) typically aligned with MERS-CoV detection. However, some patients remained febrile or reported cough even after virus clearance from the URT. Given the variability we observed in symptom progression during the MERS-CoV detection period, testing for viral shedding should continue to inform patient management, as stated in current World Health Organization guidance (14).

Our investigation has several limitations. First, the number of patients enrolled might have been insufficient to detect some associations, especially when adjusting for other variables. Second, testing data were not

available before onset for all but 1 patients, and so we used days from onset to MERS-CoV negativity to assess shedding duration; we also excluded fatal cases from such analyses because time to death was not reflective of shedding duration, meaning that factors associated predominantly with mortality were not assessed for prolonged shedding. Third, the presence of MERS-CoV RNA does not necessarily represent viable

virus. Fourth, serum specimen collection was deemed too sparse to reliably assess antibody kinetics at the patient level.

Prolonged shedding in those with DM and the detection of MERS-CoV RNA from nonrespiratory specimens, including RNA-positive stool in mildly ill patients, should be considered in infection prevention and control and when determining whether home isolation is appropriate. The



**Figure 6.** Co-detection of neutralizing serum antibodies with RNA found in serum and the upper and lower respiratory tracts among Middle East respiratory syndrome patients, by clinical outcome, Saudi Arabia, August 1, 2015–August 31, 2016. For each patient and specimen, MN titers of serum specimens were compared with estimated viral loads in the same serum specimen (A) or in URT (B) and LRT (C) specimens collected on the same day from the same patient. We defined RNA co-detection as the detection of both RNA and neutralizing antibodies (MN) in the same specimen or in respiratory specimens collected on the same day from a given patient. We only included specimens from patients who were known to develop neutralizing antibodies at any point during or after their illness. For the comparison in serum specimens, we only included specimens from patients who were known to have RNA detected in serum, at any point during their illness. For each panel, the number of patients included are indicated above the panel. The number of specimens with RNA co-detection (indicated by X) among those with detectable antibodies (indicated by Y) are also indicated by numbers (X/Y) above each panel. The blue dotted lines indicate the detection cut-offs for each assay. LRT, lower respiratory tract; ND, not detected; MN, microneutralization assay; URT, upper respiratory tract.

presence of detectable antibodies in case-patients who died and the co-detection of antibodies with viral RNA might also have implications for the development of vaccines and antibody therapeutics. Our findings broaden our understanding of MERS-CoV natural history and provide evidence to inform surveillance strategies, diagnostics, therapeutic and vaccine development, and clinical and public health management guidelines for MERS patients.

### Acknowledgments

We thank Holly M. Biggs for critical review of the manuscript, Shifaa Kamili for specimen coordination, and Melvina Girvan for assistance with data collection.

This work was funded by the Ministry of Health in Saudi Arabia, and the US Centers for Disease Control and Prevention.

The study was reviewed and approved by the Saudi Arabia Ministry of Health institutional review board. Because CDC only had access to deidentified data for secondary analyses, it was determined this project was not human subjects research, and therefore CDC's institutional review board approval was not required.

### About the Author

During this investigation, Dr. Al-Abdely was general director of Infection Prevention and Control, Ministry of Health, Saudi Arabia. He currently is professor of medicine at Alfaisal University, Saudi Arabia, and a consultant in infectious diseases for King Faisal Specialist Hospital and Research Centre, Saudi Arabia. His research interests include infection prevention and control, medical mycology, and microbial resistance.

### References

- Assiri A, McGeer A, Perl TM, Price CS, Al Rabeeah AA, Cummings DA, et al.; KSA MERS-CoV Investigation Team. Hospital outbreak of Middle East respiratory syndrome coronavirus. *N Engl J Med*. 2013;369:407–16. <http://dx.doi.org/10.1056/NEJMoa1306742>
- Oboho IK, Tomczyk SM, Al-Asmari AM, Banjar AA, Al-Mugti H, Aloraini MS, et al. 2014 MERS-CoV outbreak in Jeddah—a link to health care facilities. *N Engl J Med*. 2015;372:846–54. <http://dx.doi.org/10.1056/NEJMoa1408636>
- Arabi YM, Al-Omari A, Mandourah Y, Al-Hameed F, Sindi AA, Alraddadi B, et al.; Saudi Critical Care Trial Group. Critically ill patients with the Middle East respiratory syndrome: a multicenter retrospective cohort study. *Crit Care Med*. 2017;45:1683–95. <http://dx.doi.org/10.1097/CCM.0000000000002621>
- Arabi YM, Balkhy HH, Hayden FG, Bouchama A, Luke T, Baillie JK, et al. Middle East respiratory syndrome. *N Engl J Med*. 2017;376:584–94. <http://dx.doi.org/10.1056/NEJMsr1408795>
- Ko JH, Park GE, Lee JY, Lee JY, Cho SY, Ha YE, et al. Predictive factors for pneumonia development and progression to respiratory failure in MERS-CoV infected patients. *J Infect*. 2016;73:468–75. <http://dx.doi.org/10.1016/j.jinf.2016.08.005>
- Senga M, Arabi YM, Fowler RA. Clinical spectrum of the Middle East respiratory syndrome coronavirus (MERS-CoV). *J Infect Public Health*. 2017;10:191–4. <http://dx.doi.org/10.1016/j.jiph.2016.04.008>
- Assiri A, Al-Tawfiq JA, Al-Rabeeah AA, Al-Rabiah FA, Al-Hajjar S, Al-Barrak A, et al. Epidemiological, demographic, and clinical characteristics of 47 cases of Middle East respiratory syndrome coronavirus disease from Saudi Arabia: a descriptive study. *Lancet Infect Dis*. 2013;13:752–61. [http://dx.doi.org/10.1016/S1473-3099\(13\)70204-4](http://dx.doi.org/10.1016/S1473-3099(13)70204-4)
- Saad M, Omrani AS, Baig K, Bahloul A, Elzein F, Matin MA, et al. Clinical aspects and outcomes of 70 patients with Middle East respiratory syndrome coronavirus infection: a single-center experience in Saudi Arabia. *Int J Infect Dis*. 2014;29:301–6. <http://dx.doi.org/10.1016/j.ijid.2014.09.003>
- World Health Organization. Middle East respiratory syndrome coronavirus (MERS-CoV) fact sheet [cited 2017 Oct 30]. [https://www.who.int/en/news-room/fact-sheets/detail/middle-east-respiratory-syndrome-coronavirus-\(mers-cov\)](https://www.who.int/en/news-room/fact-sheets/detail/middle-east-respiratory-syndrome-coronavirus-(mers-cov))
- Assiri AM, Biggs HM, Abedi GR, Lu X, Bin Saeed A, Abdalla O, et al. Increase in Middle East Respiratory syndrome-coronavirus cases in Saudi Arabia linked to hospital outbreak with continued circulation of recombinant virus, July 1–August 31, 2015. *Open Forum Infect Dis*. 2016;3:ofw165.
- Assiri A, Abedi GR, Bin Saeed AA, Abdalla MA, al-Masry M, Choudhry AJ, et al. Multifacility outbreak of Middle East respiratory syndrome in Taif, Saudi Arabia. *Emerg Infect Dis*. 2016;22:32–40. <http://dx.doi.org/10.3201/eid2201.151370>
- Drosten C, Meyer B, Müller MA, Corman VM, Al-Masry M, Hossain R, et al. Transmission of MERS-coronavirus in household contacts. *N Engl J Med*. 2014;371:828–35. <http://dx.doi.org/10.1056/NEJMoa1405858>
- Alraddadi BM, Watson JT, Almarashi A, Abedi GR, Turkistani A, Sadran M, et al. Risk factors for primary Middle East respiratory syndrome coronavirus illness in humans, Saudi Arabia, 2014. *Emerg Infect Dis*. 2016;22:49–55. <http://dx.doi.org/10.3201/eid2201.151340>
- World Health Organization. Infection prevention and control during health care for probable or confirmed cases of Middle East respiratory syndrome coronavirus (MERS-CoV) infection—interim guidance [cited 2017 Oct 30]. [https://www.who.int/csr/disease/coronavirus\\_infections/ipc-mers-cov/en](https://www.who.int/csr/disease/coronavirus_infections/ipc-mers-cov/en)
- World Health Organization. Management of asymptomatic persons who are RT-PCR positive for Middle East respiratory syndrome coronavirus (MERS-CoV) [cited 2018 Sep 20]. [https://www.who.int/csr/disease/coronavirus\\_infections/management\\_of\\_asymptomatic\\_patients/en](https://www.who.int/csr/disease/coronavirus_infections/management_of_asymptomatic_patients/en)
- Memish ZA, Assiri AM, Al-Tawfiq JA. Middle East respiratory syndrome coronavirus (MERS-CoV) viral shedding in the respiratory tract: an observational analysis with infection control implications. *Int J Infect Dis*. 2014;29:307–8. <http://dx.doi.org/10.1016/j.ijid.2014.10.002>
- Poissy J, Goffard A, Parmentier-Decrucq E, Favory R, Kaut M, Kipnis E, et al.; MERS-CoV Biology Group. Kinetics and pattern of viral excretion in biological specimens of two MERS-CoV cases. *J Clin Virol*. 2014;61:275–8. <http://dx.doi.org/10.1016/j.jcv.2014.07.002>
- Oh MD, Park WB, Choe PG, Choi SJ, Kim JI, Chae J, et al. Viral load kinetics of MERS coronavirus infection. *N Engl J Med*. 2016;375:1303–5. <http://dx.doi.org/10.1056/NEJMc1511695>
- Corman VM, Albarrak AM, Omrani AS, Albarrak MM, Farah ME, Almasri M, et al. Viral shedding and antibody response in 37 patients with Middle East respiratory syndrome coronavirus infection. *Clin Infect Dis*. 2016;62:477–83.
- Memish ZA, Al-Tawfiq JA, Makhdoom HQ, Assiri A, Alhakeem RF, Albarrak A, et al. Respiratory tract samples, viral load, and genome fraction yield in patients with Middle East respiratory syndrome. *J Infect Dis*. 2014;210:1590–4. <http://dx.doi.org/10.1093/infdis/jiu292>

21. Feikin DR, Alraddadi B, Qutub M, Shabouni O, Curns A, Oboho IK, et al. Association of higher MERS-CoV virus load with severe disease and death, Saudi Arabia, 2014. *Emerg Infect Dis*. 2015;21:2029–35. <http://dx.doi.org/10.3201/eid2111.150764>
22. Guery B, Poissy J, el Mansouf L, Séjourné C, Ettahar N, Lemaire X, et al.; MERS-CoV study group. Clinical features and viral diagnosis of two cases of infection with Middle East respiratory syndrome coronavirus: a report of nosocomial transmission. *Lancet*. 2013;381:2265–72. [http://dx.doi.org/10.1016/S0140-6736\(13\)60982-4](http://dx.doi.org/10.1016/S0140-6736(13)60982-4)
23. Drosten C, Seilmaier M, Corman VM, Hartmann W, Scheible G, Sack S, et al. Clinical features and virological analysis of a case of Middle East respiratory syndrome coronavirus infection. *Lancet Infect Dis*. 2013;13:745–51. [http://dx.doi.org/10.1016/S1473-3099\(13\)70154-3](http://dx.doi.org/10.1016/S1473-3099(13)70154-3)
24. Kim SY, Park SJ, Cho SY, Cha RH, Jee HG, Kim G, et al. Viral RNA in blood as indicator of severe outcome in Middle East respiratory syndrome coronavirus infection. *Emerg Infect Dis*. 2016;22:1813–6. <http://dx.doi.org/10.3201/eid2210.160218>
25. Min CK, Cheon S, Ha NY, Sohn KM, Kim Y, Aigerim A, et al. Comparative and kinetic analysis of viral shedding and immunological responses in MERS patients representing a broad spectrum of disease severity. *Sci Rep*. 2016;6:25359. <http://dx.doi.org/10.1038/srep25359>
26. Shalhoub S, Farahat F, Al-Jiffri A, Simhairi R, Shamma O, Siddiqi N, et al. IFN- $\alpha$ 2a or IFN- $\beta$ 1a in combination with ribavirin to treat Middle East respiratory syndrome coronavirus pneumonia: a retrospective study. *J Antimicrob Chemother*. 2015;70:2129–32. <http://dx.doi.org/10.1093/jac/dkv085>
27. Zhou J, Li C, Zhao G, Chu H, Wang D, Yan HH, et al. Human intestinal tract serves as an alternative infection route for Middle East respiratory syndrome coronavirus. *Sci Adv*. 2017;3:eaa04966.
28. Choe PG, Perera RAPM, Park WB, Song KH, Bang JH, Kim ES, et al. MERS-CoV antibody responses 1 year after symptom onset, South Korea, 2015. *Emerg Infect Dis*. 2017;23:1079–84. <http://dx.doi.org/10.3201/eid2307.170310>
29. Shin HS, Kim Y, Kim G, Lee JY, Jeong I, Joh JS, et al. Immune responses to MERS coronavirus during the acute and convalescent phases of human infection. *Clin Infect Dis*. 2018. <http://dx.doi.org/10.1093/cid/ciy595>
30. Park WB, Perera RA, Choe PG, Lau EH, Choi SJ, Chun JY, et al. Kinetics of serologic responses to MERS coronavirus infection in humans, South Korea. *Emerg Infect Dis*. 2015;21:2186–9. <http://dx.doi.org/10.3201/eid2112.151421>
31. Ko JH, Müller MA, Seok H, Park GE, Lee JY, Cho SY, et al. Serologic responses of 42 MERS-coronavirus-infected patients according to the disease severity. *Diagn Microbiol Infect Dis*. 2017;89:106–11. <http://dx.doi.org/10.1016/j.diagmicrobio.2017.07.006>
32. Payne DC, Iblan I, Rha B, Alqasrawi S, Haddadin A, Al Nsour M, et al. Persistence of antibodies against Middle East respiratory syndrome coronavirus. *Emerg Infect Dis*. 2016;22:1824–6. <http://dx.doi.org/10.3201/eid2210.160706>
33. Saeed AA, Abedi GR, Alzahrani AG, Salameh I, Abdirizak F, Alhakeem R, et al. Surveillance and testing for Middle East respiratory syndrome coronavirus, Saudi Arabia, April 2015–February 2016. *Emerg Infect Dis*. 2017;23:682–5. <http://dx.doi.org/10.3201/eid2304.161793>
34. Corman VM, Ölschläger S, Wendtner CM, Drexler JF, Hess M, Drosten C. Performance and clinical validation of the RealStar MERS-CoV kit for detection of Middle East respiratory syndrome coronavirus RNA. *J Clin Virol*. 2014;60:168–71. <http://dx.doi.org/10.1016/j.jcv.2014.03.012>
35. Lu X, Whitaker B, Sakthivel SK, Kamili S, Rose LE, Lowe L, et al. Real-time reverse transcription-PCR assay panel for Middle East respiratory syndrome coronavirus. *J Clin Microbiol*. 2014;52:67–75. <http://dx.doi.org/10.1128/JCM.02533-13>
36. Al-Abdely HM, Midgley CM, Alkhamis AM, Abedi GR, Tamin A, Binder AM, et al. Infectious MERS-CoV isolated from a mildly ill patient, Saudi Arabia. *Open Forum Infect Dis*. 2018;5:ofy111. <http://dx.doi.org/10.1093/ofid/ofy111>
37. Al-Abdallat MM, Payne DC, Alqasrawi S, Rha B, Tohme RA, Abedi GR, et al.; Jordan MERS-CoV Investigation Team. Hospital-associated outbreak of Middle East respiratory syndrome coronavirus: a serologic, epidemiologic, and clinical description. *Clin Infect Dis*. 2014;59:1225–33. <http://dx.doi.org/10.1093/cid/ciu359>
38. Trivedi S, Miao C, Al-Abdallat MM, Haddadin A, Alqasrawi S, Iblan I, et al. Inclusion of MERS-spike protein ELISA in algorithm to determine serologic evidence of MERS-CoV infection. *J Med Virol*. 2018;90:367–71. <http://dx.doi.org/10.1002/jmv.24948>
39. Assiri AM, Midgley CM, Abedi GR, Bin Saeed A, Almasri MM, Lu X, et al. Epidemiology of a novel recombinant Middle East respiratory syndrome coronavirus in humans in Saudi Arabia. *J Infect Dis*. 2016;214:712–21. <http://dx.doi.org/10.1093/infdis/jiw236>
40. Sabir JS, Lam TT, Ahmed MM, Li L, Shen Y, Abo-Aba SE, et al. Co-circulation of three camel coronavirus species and recombination of MERS-CoVs in Saudi Arabia. *Science*. 2016;351:81–4. <http://dx.doi.org/10.1126/science.aac8608>
41. World Health Organization. Diabetes country profile, Saudi Arabia [cited 2017 Dec 26]. [https://www.who.int/diabetes/country-profiles/sau\\_en.pdf](https://www.who.int/diabetes/country-profiles/sau_en.pdf)
42. International Diabetes Federation. Age-adjusted prevalence of diabetes (20–79), Saudi Arabia, 2017 [cited 2017 Dec 26]. <http://www.diabetesatlas.org/across-the-globe.html>
43. Badawi A, Ryoo SG. Prevalence of diabetes in the 2009 influenza A (H1N1) and the Middle East respiratory syndrome coronavirus: a systematic review and meta-analysis. *J Public Health Res*. 2016;5:733. <http://dx.doi.org/10.4081/jphr.2016.733>
44. Banik GR, Alqahtani AS, Booy R, Rashid H. Risk factors for severity and mortality in patients with MERS-CoV: analysis of publicly available data from Saudi Arabia. *Virol Sin*. 2016;31:81–4. <http://dx.doi.org/10.1007/s12250-015-3679-z>
45. Choi WS, Kang CI, Kim Y, Choi JP, Joh JS, Shin HS, et al.; Korean Society of Infectious Diseases. Clinical presentation and outcomes of Middle East respiratory syndrome in the Republic of Korea. *Infect Chemother*. 2016;48:118–26. <http://dx.doi.org/10.3947/ic.2016.48.2.118>
46. Kim ES, Choe PG, Park WB, Oh HS, Kim EJ, Nam EY, et al. Clinical progression and cytokine profiles of Middle East respiratory syndrome coronavirus infection. *J Korean Med Sci*. 2016;31:1717–25. <http://dx.doi.org/10.3346/jkms.2016.31.11.1717>
47. Kim KH, Tandil TE, Choi JW, Moon JM, Kim MS. Middle East respiratory syndrome coronavirus (MERS-CoV) outbreak in South Korea, 2015: epidemiology, characteristics and public health implications. *J Hosp Infect*. 2017;95:207–13. <http://dx.doi.org/10.1016/j.jhin.2016.10.008>

---

Address for correspondence: Claire M. Midgley or John T. Watson, Centers for Disease Control and Prevention, 1600 Clifton Road NE, Atlanta, GA, 30329-4027; email: ydk5@cdc.gov or acq4@cdc.gov

# Middle East Respiratory Syndrome Coronavirus Infection Dynamics and Antibody Responses among Clinically Diverse Patients, Saudi Arabia

## Appendix 1

### Supplementary Methods

#### Serologic Assays

Serum specimens with sufficient volume were tested by using 4 CDC serologic assays: 1) microneutralization (MNt) assay using live Hu/Jordan\_N3\_2012 MERS-CoV (GenBank accession no. KJ614529.1) (1); 2) pseudoparticle neutralization assay (VSV-MERS-S) using vesicular stomatitis virus (VSV) expressing spike (S) domains 1 and 2 of Hu/Florida/USA-2\_Saudi Arabia\_2014 MERS-CoV (GenBank accession no. KJ829365.1) (see additional details below); 3) S ELISA (Ig-specific) using baculovirus-expressed domains S1 and S2 (ectodomain) of Hu/EMC/2012 MERS-CoV (GenBank accession no AFS88936.1) (2); 4) nucleocapsid (N) ELISA (Ig-specific) using bacterially-expressed N of Hu/EMC/2012 MERS-CoV (GenBank accession no AFS88936.1) (1,2).

#### Details of the Pseudoparticle Neutralization Assay (VSV-MERS-S)

##### Cells

BHK-21 (Baby Hamster Kidney-21) cells were cultured and maintained in Dulbecco's Modified Essential Medium (DMEM) containing 5% fetal bovine serum (FBS) (Life Technologies/ GIBCO), and 1X penicillin/streptomycin (p/s) (Sigma) at 37°C under a 5% CO<sub>2</sub> atmosphere. Vero (African green monkey kidney epithelial) cells were cultured and maintained in Dulbecco's Modified Essential Medium (DMEM) containing 10% fetal bovine serum (FBS) (Life Technologies/ GIBCO), and 1X penicillin/streptomycin (p/s) (Sigma) at 37°C under a 5% CO<sub>2</sub> atmosphere. Where production of different VSV based pseudotypes bearing MERS-CoV-S

and VSV-G glycoproteins were performed in BHK-21 cells, the neutralization assay and pseudotype particles titration were carried out in Vero cells. VSV pseudotype system components and BHK-21 cells were kindly provided by Dr. Michael Whitt.

#### Serum Samples

Pooled normal human serum (pNHS) was purchased from Lee Biosolutions and used as negative control serum. Human serum from a single patient with laboratory confirmed MERS-CoV infection was used as the positive control serum. The positive control serum was collected from the first imported case of MERS-CoV into the United States during the case investigation, with a neutralizing titer of 320. A laboratory confirmed SARS-CoV patient serum sample and a panel of human serum with confirmed high neutralizing antibody titers to human coronaviruses 229E, HKU1, OC43, NL63 were used in this study to evaluate VSV-MERS-CoV-S particle based neutralization assay for potential cross neutralization. A total of 52 human sera samples from MERS-CoV-infected patients in Saudi Arabia were used to examine equivalencies.

#### Production of Pseudotyped Viruses

A codon-optimized S gene was designed according to published MERS-CoV genome sequence Florida strain (GenBank accession number: KJ829365.1), synthesized by GeneScript and sub-cloned into pCAGGS 2.0 eukaryotic expression vector to construct pCAGGS-MERS-FL-S. Generation of VSV-MERS-CoV-S pseudovirus particles was performed as previously described (3). Briefly, BHK-21 cells were transfected with pCAGGS plasmid encoding MERS-CoV-FL-S (pCAGGS-MERS-FL-S), VSV-G (pCAGGS-VSV-G), or pCAGGS-empty vector (pCAGGS-EV) with Lipofectamine 2000 (Life Technologies). At 24 hours post-transfection, cells were infected with pVSV $\Delta$ G\*-G-Luciferase at a multiplicity of infection (MOI) of 5. Supernatants containing pseudoparticles were harvested 24 hours later and aliquots were stored at  $-80^{\circ}\text{C}$ .

#### Titration of VSV-MERS-CoV-S Pseudovirus Particles

Pseudovirus particles titers were determined in Vero cells. Vero cells were infected in serum free Dulbecco's Modified Essential Medium (DMEM) (Life Technologies/ GIBCO) containing 1X penicillin/streptomycin (p/s) (Sigma), in triplicate wells of 96-well black and white (B&W) tissue culture treated plates (Perkin-Elmer) with 50  $\mu\text{L}$  of 5-fold serial dilutions of



pseudoparticles. After 1 hr adsorption, the inoculums were removed, replaced with fresh DMEM containing 10% FBS (Life Technologies/ GIBCO), and 1X (p/s) (Sigma) media, and incubated at 37°C. At 24 hr post inoculation, luciferase activity was determined using the Luciferase Assay Kit (Promega, Inc) according to the manufacturer's instructions. The titer of VSV-MERS-CoV-S pseudovirus was defined as the highest dilution which gave rise to 105 relative luciferase units. For titration of VSV-MERS-CoV-S pseudovirus particles, the pCAGGS plasmids encoding vesicular stomatitis virus recombinant G and the empty vector (EV) pCAGGS-EV was used to generate VSV-G pseudovirus particles and pseudovirus particles without heterologous protein (EV) as positive and negative controls respectively.

#### Pseudotype Neutralization Assay

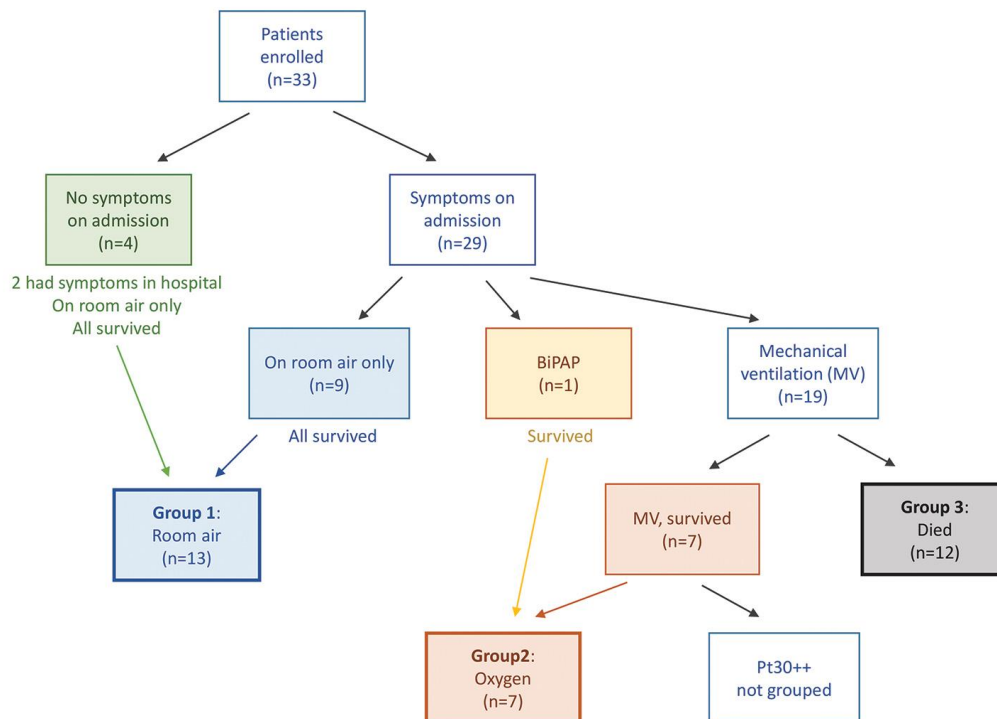
Briefly, Vero cells were seeded in 96-well black and white (B&W) tissue culture treated plates (Perkin-Elmer) 1 day before infection. Human sera samples were heat inactivated at 56°C for 30min, and diluted as 2-fold serial dilutions beginning with an initial dilution of 1:40 in serum free Dulbecco's Modified Essential Medium (DMEM) (Life Technologies/ GIBCO) containing 1X penicillin/streptomycin (p/s) (Sigma). Two hundred µL of each serum dilution were mixed thoroughly with 105 (relative luciferase units) equivalent VSV-MERS-CoV-S pseudovirus particles diluted to 200 µL and incubated at 37°C under a 5% CO<sub>2</sub> atmosphere for 1 hour. One hundred µL of the pseudovirus particle-serum mixtures were transferred onto Vero cell monolayers and were incubated at 37°C under a 5% CO<sub>2</sub> atmosphere for 1 hour. After adsorption, 100 µl of Dulbecco's Modified Essential Medium (DMEM) containing 10% fetal bovine serum (FBS) (Life Technologies/ GIBCO), and 1X penicillin/streptomycin (p/s) (Sigma) was added and incubated at 37°C and 5% CO<sub>2</sub> for 23 hrs. At 24 hours post-inoculation, luciferase activity was determined using the Luciferase Assay Kit (Promega, Inc) according to the manufacturer's instructions. This assay was performed in triplicate.

To calculate neutralization, luciferase activity from each serial diluted human sera sample were normalized to pNHS. Neutralization was calculated as:  $(\text{Average RLU value of pNHS} - \text{Average RLU value with test serum}) / \text{Average RLU value of pNHS} \times 100$ . Endpoint reciprocal dilutions were set as the highest dilution of the test serum sample where an 80% decrease in RLU was observed. Serum samples that failed to show at least 80% decrease at the 1:40 initial

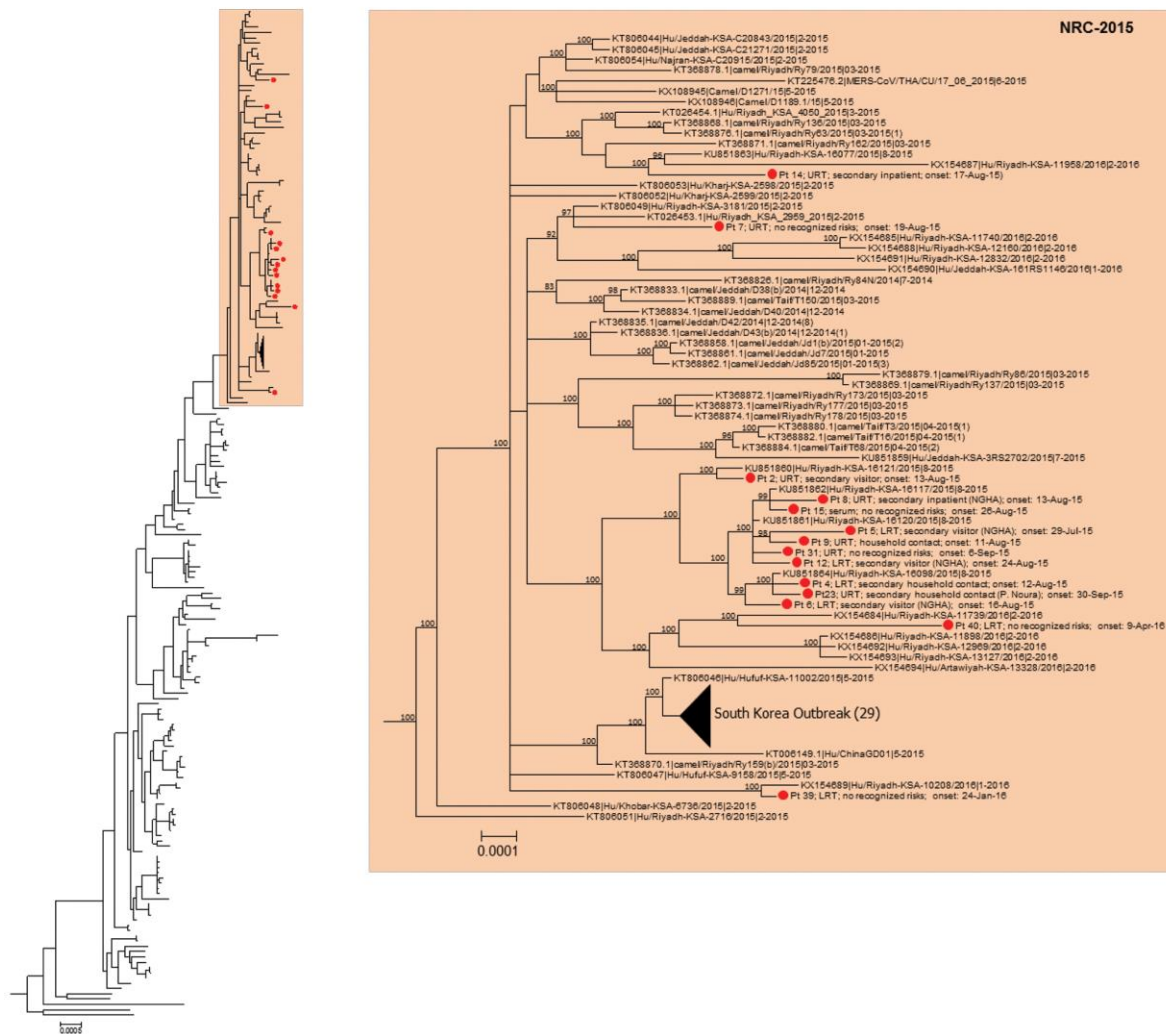
dilution were considered negative. Positive and negative control serum were included to validate the assay.

## References

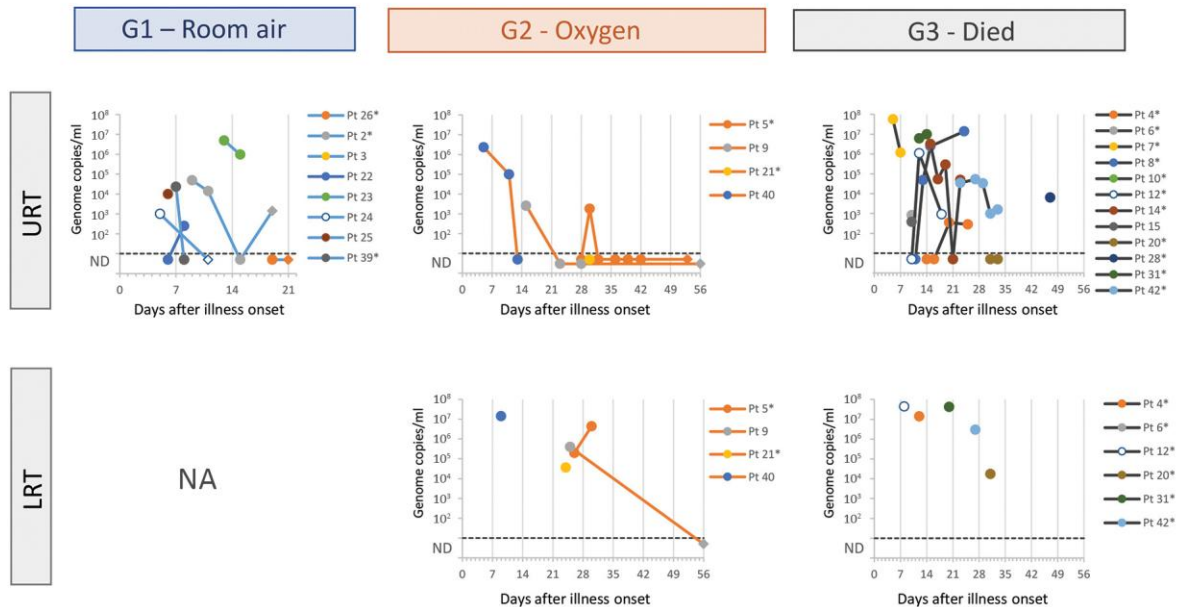
1. Al-Abdallat MM, Payne DC, Alqasrawi S, Rha B, Tohme RA, Abedi GR, et al.; Jordan MERS-CoV Investigation Team. Hospital-associated outbreak of Middle East respiratory syndrome coronavirus: a serologic, epidemiologic, and clinical description. *Clin Infect Dis*. 2014;59:1225–33. [PubMed http://dx.doi.org/10.1093/cid/ciu359](http://dx.doi.org/10.1093/cid/ciu359)
2. Trivedi S, Miao C, Al-Abdallat MM, Haddadin A, Alqasrawi S, Iblan I, et al. Inclusion of MERS-spike protein ELISA in algorithm to determine serologic evidence of MERS-CoV infection. *J Med Virol*. 2018;90:367–71. [PubMed http://dx.doi.org/10.1002/jmv.24948](http://dx.doi.org/10.1002/jmv.24948)
3. Whitt MA. Generation of VSV pseudotypes using recombinant  $\Delta$ G-VSV for studies on virus entry, identification of entry inhibitors, and immune responses to vaccines. *J Virol Methods*. 2010;169:365–74. [PubMed http://dx.doi.org/10.1016/j.jviromet.2010.08.006](http://dx.doi.org/10.1016/j.jviromet.2010.08.006)



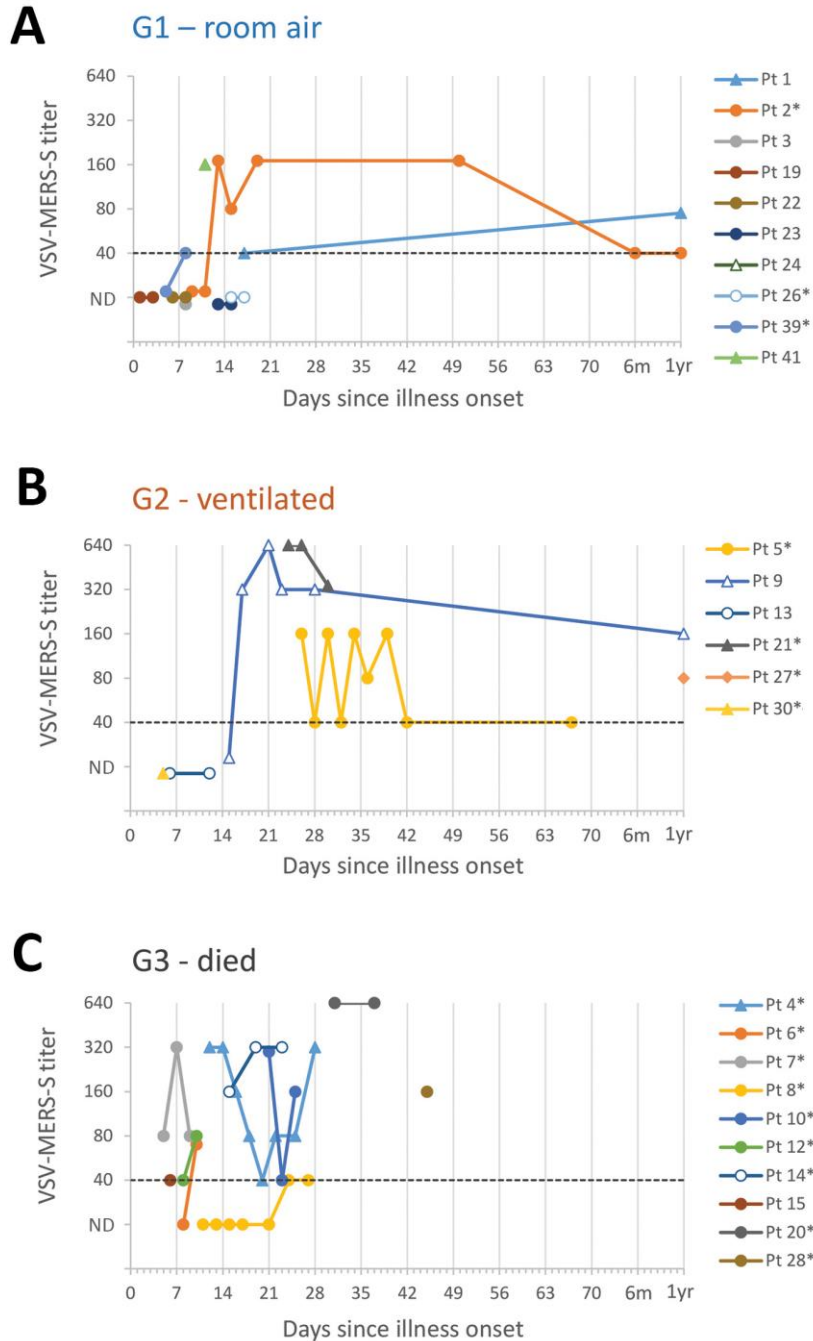
**Appendix 1 Figure 1.** Flow diagram depicting grouping of patients for severity analysis. ++, Pt30 was hospitalized and mechanically ventilated prior to MERS onset because of a road traffic accident; this patient was excluded from severity and clinical course analyses.



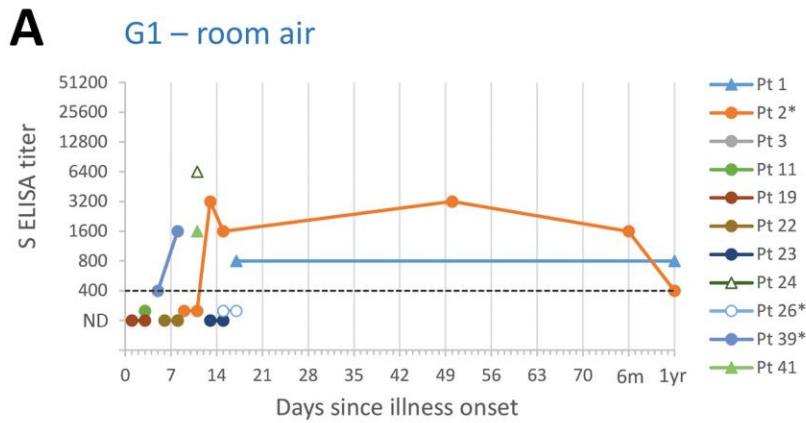
**Appendix 1 Figure 2.** Phylogeny of MERS-CoV full genome sequences. Phylogenetic analysis of the MERS-CoV genomes obtained from 14 patients in our study and 261 previously published sequences available in GenBank. The NRC-2015 (or lineage 5) subclade is repositioned for clarity. Whole genome sequences obtained in this study are marked with solid red circles. The tree was constructed by the program MrBayes v3.2.6 under a general time-reversible (GTR) model of nucleotide substitution with 4 categories of  $\gamma$ -distributed rate heterogeneity and a proportion of invariant sites (GTR+4 + I). Clade-credibility values  $\geq 70\%$  are indicated above the respective nodes. Numbers in brackets following some strain identifiers are the number of identical sequences with the same location and sample collection time. The scale bar shows the genetic distance as nucleotide substitutions per site. Each specimen label includes: accession number, city and country of collection, patient number (e.g. 040), day of collection post-enrollment (e.g. D1), specimen type (N, nasopharyngeal/oropharyngeal swab; S, sputum; P, serum), and date of collection.

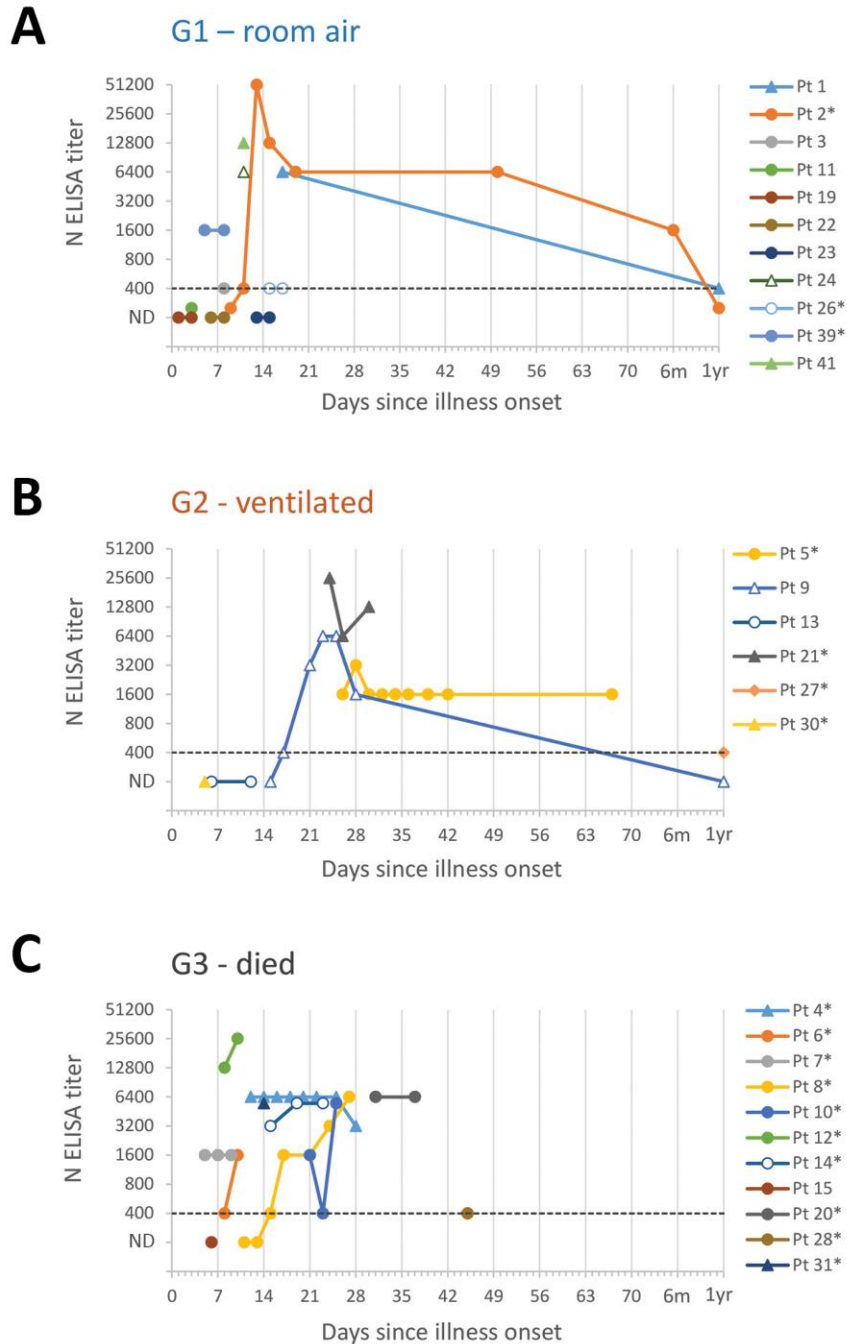


**Appendix 1 Figure 3.** Estimated viral loads in respiratory tract specimens collected from hospitalized patients and submitted to CDC. Upper respiratory tract (URT) and lower respiratory tract (LRT) specimens are shown by severity group. Estimated viral loads are based on upE rRT-PCR Ct values, or N2 Ct values if not available. The dashed line represents the limit of detection, below which specimens were considered MERS-CoV-negative or not detected (ND). \*, patients with a documented history of diabetes mellitus (DM). Round data points represent specimens collected during the MERS-CoV detection period (defined by clinical results from respiratory specimens). Diamond data points represent specimens collected after the MERS-CoV detection period (defined by clinical diagnostic results from respiratory specimens); the URT specimen collected 19 days p.o. in Pt 2 is the only specimen with MERS-CoV RNA detected after the detection period in clinical specimens.

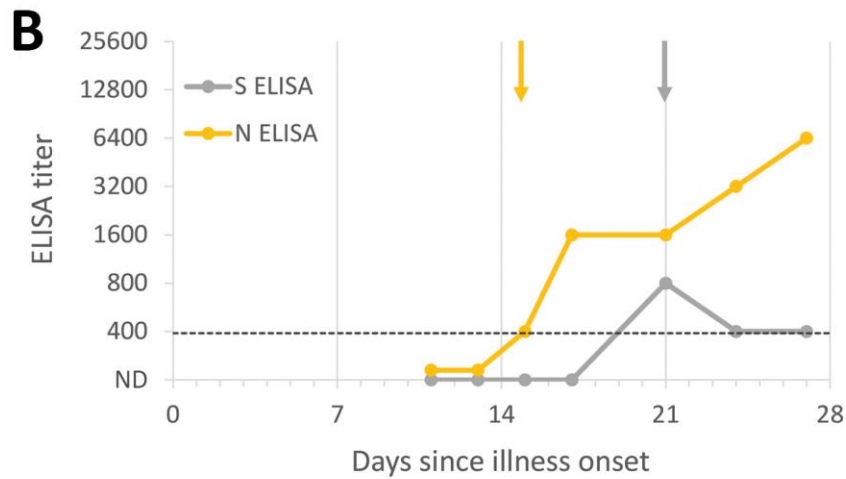
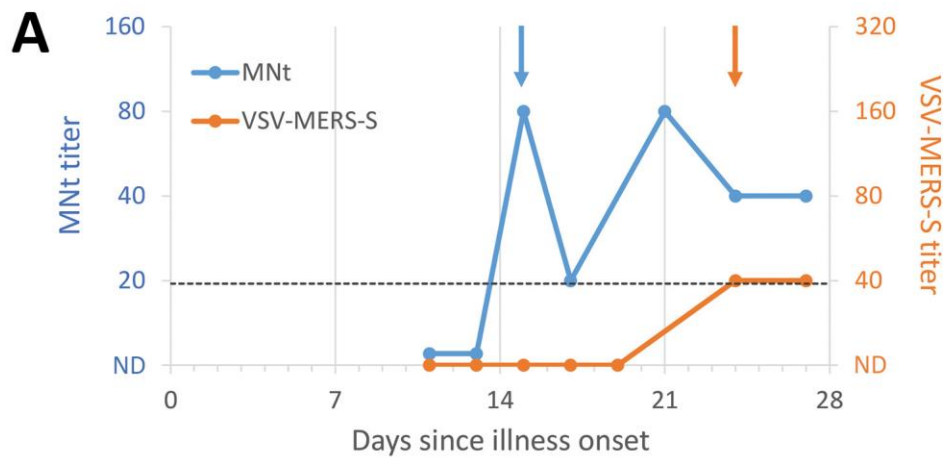


**Appendix 1 Figure 4.** Pseudoparticle neutralization (VSV-MERS-S) antibody titers, by patient and severity group. Panels A, B and C depict the VSV-MERS-S titers of sera collected from G1, G2 and G3 patients, respectively, by days since illness onset (day 0). The dashed line represents the limit of detection, below which specimens were considered not to have detectable antibodies (ND, not detected). \*, patients with documented history of diabetes mellitus (DM). +, Pt 11 did not report any symptoms throughout their illness. ++, Pt30 was hospitalized and mechanically ventilated prior to MERS onset because of a road traffic accident.



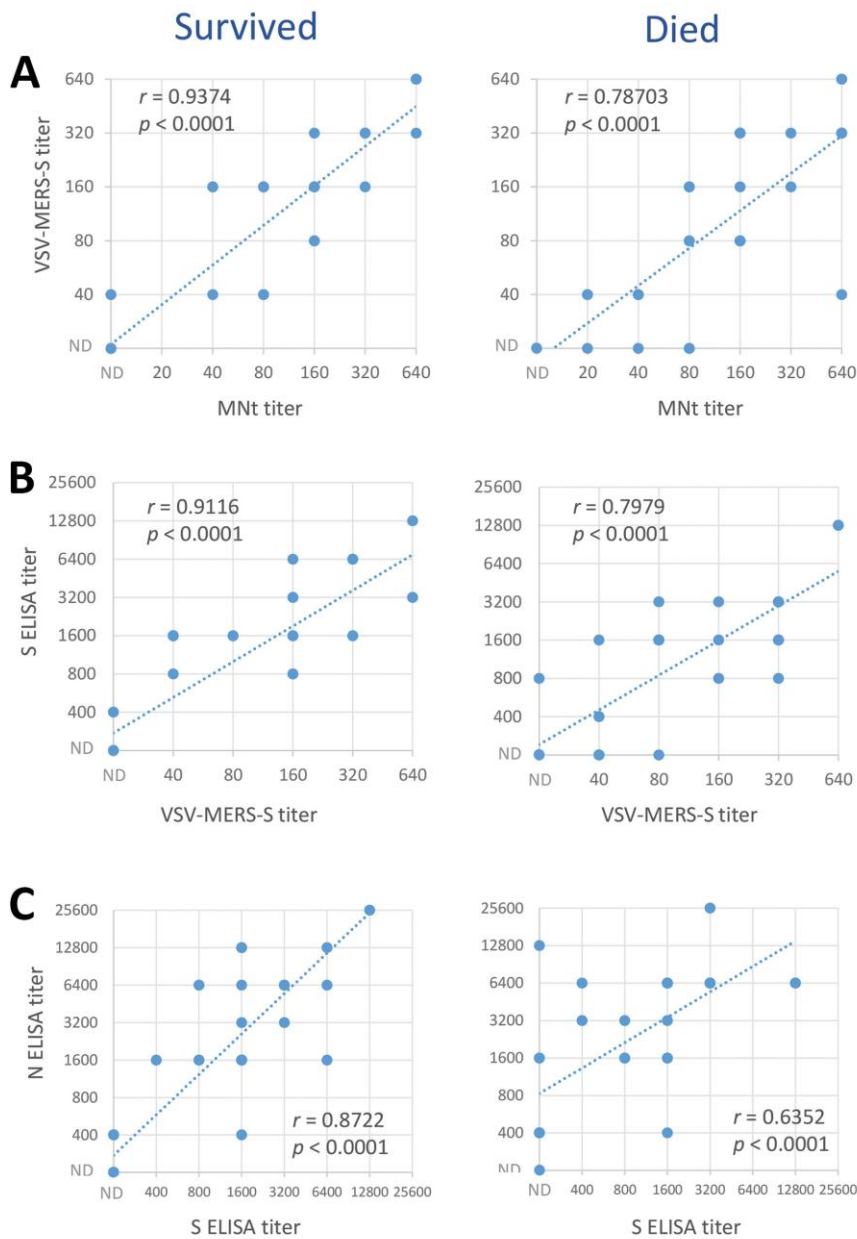


**Appendix 1 Figure 6.** Nucleocapsid ELISA (N ELISA) antibody titers, by patient and severity group. Panels A, B and C depict the N ELISA titers of sera collected from G1, G2 and G3 patients, respectively, by days since illness onset (day 0). The dashed line represents the limit of detection, below which specimens were considered not to have detectable antibodies (ND, not detected). \*, patients with documented history of diabetes mellitus (DM). +, Pt 11 did not report any symptoms throughout their illness. ++, Pt30 was hospitalized and mechanically ventilated prior to MERS onset because of a road traffic accident.

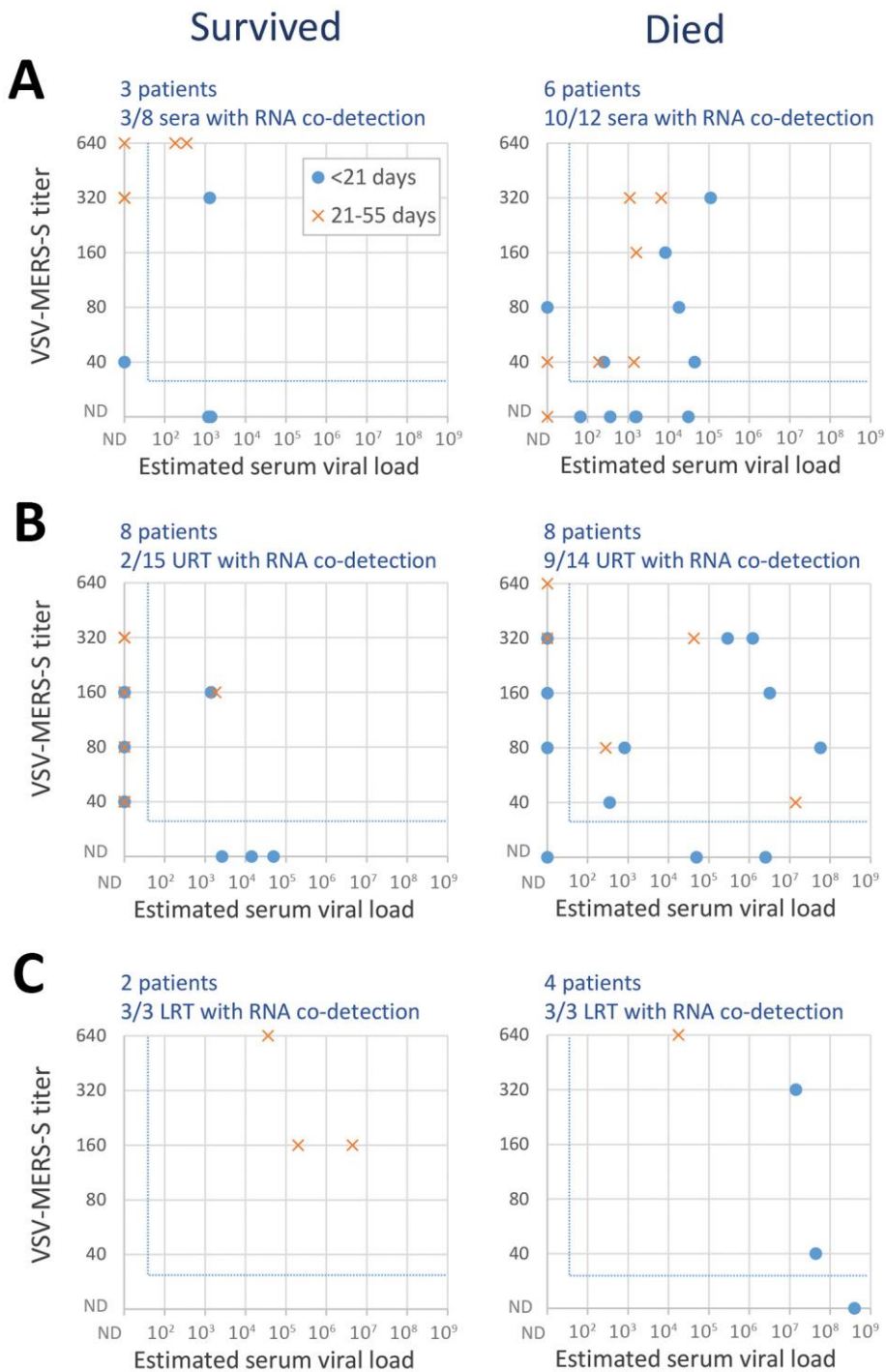


**Appendix 1 Figure 7.** Time course of antibody responses for Patient 8. Neutralizing (A) and ELISA (B) titers are depicted for patient 8, by days since illness onset (day 0). The dashed line represents the limit of detection, below which specimens were considered not to have detectable antibodies (ND, not detected). Arrows indicate the first day antibodies were detected in each assay.





**Appendix 1 Figure 8.** Correlations of different serologic assays, by clinical outcome. Specimens collected <math>< 56</math> days post illness onset were included. Panel A depicts comparisons of microneutralization (MNt) and pseudoparticle neutralization (VSV-MERS-S) titers for each serum specimen. Panel B depicts comparisons of spike (S) ELISA and pseudoparticle neutralization (VSV-MERS-S) titers for each serum specimen. Panel C depicts comparisons of S ELISA and nucleocapsid (N) ELISA titers for each serum specimen. In each panel, specimens from patients who survived and died are depicted in the left and right graphs, respectively. Spearman  $r$  value and  $p$  values are depicted for each comparison.



**Appendix 1 Figure 9.** Co-detection of pseudoparticle neutralizing serum Abs with RNA found in serum and the upper and lower respiratory tract, by clinical outcome. For each patient and specimen, pseudoparticle neutralization (VSV-MERS-S) titers of serum specimens were compared to estimated viral loads in the same serum specimen (A), or in upper (B) and lower (C) respiratory tract specimens collected on the same day from the same patient. We defined RNA co-detection as the detection of both RNA and

neutralizing Abs (VSV-MERS-S) in the same specimen, or in respiratory specimens collected on the same day from a given patient. We only included specimens from patients who were known to develop neutralizing Ab responses at any point during or after their illness. For the comparison in serum specimens, we only included specimens from patients who were known to have RNA detected in serum, at any point during their illness. For each panel, the number of patients included are indicated above the panel. The number of specimens with RNA co-detection (X) among those with detectable Abs (Y) are also indicated (X/Y) above each panel. The blue dotted lines indicate the detection cut-offs for each assay. ND, not detected. URT, upper respiratory tract. LRT, lower respiratory tract.

1  
20 30 40 50 60 70

Consensus  
M H S V F L L M L L P L E S Y A V G P D S V K S A G L E V D I O O F P D K W P R P D V S K A D G L V P O G R A Y S N I L I I V O G L E P A V O

Identity  
1. MERS-CoV EMC spike  
2. MERS-CoV FL spike  
3. MERS-CoV Jordan spike

Consensus  
80 90 100 110 120 130 140 150  
G D H G M V A V S A G H A I I L P E P O K L A V A N Y S D V K G F A N G A V V R I G A A A N S I G I V I I S P S I S A I R K I L V P A F M G S S V G N F

Identity  
1. MERS-CoV EMC spike  
2. MERS-CoV FL spike  
3. MERS-CoV Jordan spike

Consensus  
160 170 180 190 200 210 220 230  
S D G M G R F E N H I L V L P D G G G I L R A Y C I L E E R R G N H C P A G N S Y S I A Y H P A I D S S G N N R N A S I N S K F K Y E N I

Identity  
1. MERS-CoV EMC spike  
2. MERS-CoV FL spike  
3. MERS-CoV Jordan spike

Consensus  
240 250 260 270 280 290 300 310  
R N C F E M V A N I L F E P D I L E W G I L I O A G V H I L E S S R A V I L Y G G M G F A I L A V D I L I K A Y S I I P H S I R S I O S D R K A W A

Identity  
1. MERS-CoV EMC spike  
2. MERS-CoV FL spike  
3. MERS-CoV Jordan spike

Consensus  
320 330 340 350 360 370 380 390  
L A V Y K L O P L F L L P D S V D G I R R A I D C F E N D I L S O I H C S Y S F D V S G V A S S F E A R P S G S V A F O A F G V E D E S P I L S

Identity  
1. MERS-CoV EMC spike  
2. MERS-CoV FL spike  
3. MERS-CoV Jordan spike

Consensus  
400 410 420 430 440 450 460 470  
G P P G V A N E R R V E I N N V N I L K L L S I S V N D I F O S O I S P A A I A S N C Y S S I I D V S Y P L S M K S D I S V S A G P I S O F A N

Identity  
1. MERS-CoV EMC spike  
2. MERS-CoV FL spike  
3. MERS-CoV Jordan spike

Consensus  
470 480 490 500 510 520 530 540  
G P P G V A N E R R V E I N N V N I L K L L S I S V N D I F O S O I S P A A I A S N C Y S S I I D V S Y P L S M K S D I S V S A G P I S O F A N

Identity  
1. MERS-CoV EMC spike  
2. MERS-CoV FL spike  
3. MERS-CoV Jordan spike

Consensus  
550 560 570 580 590 600 610 620  
P I E E G G V L A S S S V A H I E Q L M G E G I L V O Y G I D I N S V C P K L E F A N D I K I A S O I G N C V A S I L Y G V S G R G V I O N C F A V G

Identity  
1. MERS-CoV EMC spike  
2. MERS-CoV FL spike  
3. MERS-CoV Jordan spike

Consensus  
630 640 650 660 670 680 690 700  
V R O R F V A D A Y O N L V G A S D D G N Y A C I R A G V S V P V S V I Y D K E K I R H A I L E G S V A C E H I I S I M S O Y S R S R S M L R R D S

Identity  
1. MERS-CoV EMC spike  
2. MERS-CoV FL spike  
3. MERS-CoV Jordan spike

Consensus  
710 720 730 740 750 760 770 780  
I V G P L O P A V G C V L G I A V S S I F V E D E K R L G O S T C A L P D P S I I P R S V R S V P G E M R L A S F A N H P L O V O I N S S Y L K I

Identity  
1. MERS-CoV EMC spike  
2. MERS-CoV FL spike  
3. MERS-CoV Jordan spike

Consensus  
790 800 810 820 830 840 850  
S P I N I S F A G C E Y F O I R I P K V A I R C G A V G N E F O K C O L L R E R S Y G E G S S I N O A I I G A N L R O D D S V R N I F A S V S S O S

Identity  
1. MERS-CoV EMC spike  
2. MERS-CoV FL spike  
3. MERS-CoV Jordan spike

Consensus  
860 870 880 890 900 910 920 930  
S P I N I S F A G C E Y F O I R I P K V A I R C G A V G N E F O K C O L L R E R S Y G E G S S I N O A I I G A N L R O D D S V R N I F A S V S S O S

Identity  
1. MERS-CoV EMC spike  
2. MERS-CoV FL spike  
3. MERS-CoV Jordan spike

Consensus  
940 950 960 970 980 990 1,000 1,010  
P I M P V N N E A A V A S S I L G S I A G V G W A G L S S F A A I P F A G S I F A V R L N G V G I I G O V L S E N O K I A N K E N O A L G A M O L G E P I I

Identity  
1. MERS-CoV EMC spike  
2. MERS-CoV FL spike  
3. MERS-CoV Jordan spike

Consensus  
1,020 1,030 1,040 1,050 1,060 1,070 1,080 1,090  
I I N E A T O V Q P A V N N A Q A L S K A S E L S N I E G A I S A S I G D I O R I D V L E O P A O D R I N G R I I I I N A F A Q O L V R S T S A

Identity  
1. MERS-CoV EMC spike  
2. MERS-CoV FL spike  
3. MERS-CoV Jordan spike

Consensus  
1,100 1,110 1,120 1,130 1,140 1,150 1,160 1,170  
A I S A G L A K P A V N E C V R A Q S R S G E G G E T H I V S F A V A N P A P N G L V F H I V G V A P S N H I L A V S A V G I G D A A N P I N C I A P A P N G

Identity  
1. MERS-CoV EMC spike  
2. MERS-CoV FL spike  
3. MERS-CoV Jordan spike

Consensus  
1,180 1,190 1,200 1,210 1,220 1,230 1,240  
V I K K I N N R I V D I S V Y I G S S F A P E P I L S I N R A V A P O V I Y O N I S I N I P P L L G N S I G D I O D I L D E F E K N V S I S T P A N

Identity  
1. MERS-CoV EMC spike  
2. MERS-CoV FL spike  
3. MERS-CoV Jordan spike

Consensus  
1,250 1,260 1,270 1,280 1,290 1,300 1,310 1,320  
I R S S I O I N I L L D I L V E M S I Q G V V K A I N S Y I D I K E I G N Y A V Y N K W P W Y I W I G I A G I V A L A C V F I L O C I E C G I N

Identity  
1. MERS-CoV EMC spike  
2. MERS-CoV FL spike  
3. MERS-CoV Jordan spike

Consensus  
1,330 1,340 1,350 1,353  
G I G K K C N R C C D R V E Y D L E P H K A V H V I

Identity  
1. MERS-CoV EMC spike  
2. MERS-CoV FL spike  
3. MERS-CoV Jordan spike

Consensus  
G I G K K C N R C C D R V E Y D L E P H K A V H V I

**Appendix 1 Figure 10.** MERS-CoV spike protein alignment of virus strains used in the serologic assays. MERS-CoV spike protein sequences from Hu/EMC/2012 (MERS-CoV EMC spike), Hu/Florida/USA-2\_Saudi Arabia\_2014 MERS-CoV (MERS-CoV FL spike), and Hu/Jordan\_N3\_2012 MERS-CoV (MERS-CoV Jordan spike) were aligned using Geneious (version 11.1.2) multiple sequence alignment tool. The alignment type used was global alignment with free end gaps with a Blosum62 cost matrix. Consensus sequence, identity, and the sequence of each spike strain are shown. Additionally, residues within the receptor binding domain are annotated.