



# Epi Info™

## Community Health Assessment Tutorial

---

DOCUMENT VERSION 2.0, PUBLISHED OCTOBER 2005



*Department of Health and Human Services  
Centers for Disease Control and Prevention  
National Center for Public Health Informatics*

This page intentionally blank.



# Acknowledgements

The Epi Info™ Community Health Assessment Tutorial was produced by the collaborative efforts of the Centers for Disease Control and Prevention (CDC), the Assessment Initiative (AI), and the New York State Department of Health (NYSDOH).

The CDC is one of the thirteen major operating components of the U.S. Department of Health and Human Services. It is at the forefront of public health efforts to prevent and control infectious and chronic diseases, injuries, workplace hazards, disabilities, and environmental health threats. Today, CDC is globally recognized for conducting research and investigations, and for its action-oriented approaches to issues of public health. CDC uses its research and findings to improve people's daily lives, and respond to local, national, and international health emergencies.

The Assessment Initiative (AI) comprises a cooperative program between CDC and state health departments that supports the development of innovative systems and methods to improve the way data is used to provide information for public health decisions and policy. Through the AI, funded states work together with local health jurisdictions and communities to improve access to data, improve skills to accurately interpret and understand data, and use of the data so that assessment findings ultimately drive public health program and policy decisions.

New York State's AI has been awarded a new five-year cooperative agreement by the CDC to strengthen assessment capacity and practice. This is the third round of AI funding offered through the CDC, and it is the second time that the NYSDOH has been successful in getting the award.

This tutorial for using the Epi Info software program has been created by the CDC Epi Info™ development team at the request of the NYSDOH Assessment Initiative, and has been designed using asthma data provided to the CDC by the NYSDOH.

## Copyright Information

*Epi Info* is a trademark of CDC. Epi Info™ programs are provided in the public domain to promote public health. Programs may be freely translated, copied, or distributed. No warranty is made or implied for use of the software for any particular purpose.

---

## **Centers for Disease Control and Prevention (CDC)**

*Director*, Julie L. Gerberding, MD, MPH

*Chief Science Officer*, Dixie E. Snider, MD, MPH

*Associate Director for Science*, Tanya Popovic, MD, PhD

## **Coordinating Center for Health Information and Service (CoCHIS)**

*(Acting) Directors*, Blake Caldwell, MD, MPH and Edward J. Sondik, PhD

## **National Center for Public Health Informatics (NCPHI)**

*(Acting) Director*, John Loonsk, MD

## **Division of Public Health Surveillance and Informatics (DPHSI)**

*(Acting) Director*, Ruth Jajosky, DMD, MPH

*(Former Acting) Director*, Pat Schumacher, MS, RD

*(Acting) Information Technology Branch (ITB) Chief*, Robert Fagan

## **Epi Info™ Development Team:**

*Instructional Design*: Shannon Rowlett Jones

*Epi Info™ Technical Advisors*: Karen DeRosa, Roger Friedman, Andre Swoope

*ITB Advisors*: David Nitschke, Carol Worsham, Marilyn Reynolds

*AI Advisors*: Alex Charleston, Nelson Adekoya

*CDC Editor*: W. Scott Janes

## **New York State Department of Health (NYSDOH), Public Health Information Group**

*AI Advisor*: Priti Irani, MS, Project Director, Assessment Initiative

*Technical Review Board*: Cate Bohn, MPH, Community Health Information Specialist; Aaron Mair, MPA, Public Research Specialist III; Mike Medvesky, MPH, Director; Trang Nguyen, MD, MPH, New York State Asthma Epidemiologist; Cheryl Ellemberg, MPH, former Research Specialist III

## **NYSDOH, Bureau of Communicable Diseases**

*Technical Review Board*: Hwa-Gan Chang, PhD, Director Statistical Unit

## **NYSDOH, Information Systems and Health Statistics Group**

*Technical Review Board:* Linh Le, MD, PhD, Research Scientist IV

## **University at Albany School of Public Health**

*Technical Review Board:* Mike Zdeb, Assistant Professor

## **County Workgroup**

*Content Review Board:* E. Oscar Alleyne, MPH, Epidemiologist; Cristina Dyer-Drobnack, MS, Project Coordinator, NYSACHO; Jan Herrick Director, Environmental Health, Schoharie County Department of Health; Stephen A. Jennings, Public Health Planner, Jefferson County Public Health Service; Patricia Many, BS, RN, Public Health Nurse, Oneida County Health Department; Joanne Ryan, RN, Communicable Disease Nurse, Putnam County Department of Health; Ted Schiele, MS Planner/Evaluator, Tompkins County Health Department; Christopher M. Szwagiel, MS, MPH, DrPH, Director Genesee County Department of Health; Karen Tuchman, RN, MPH, Public Health Nurse, Putnam County Department of Health

This page intentionally blank.

# Contents

ACKNOWLEDGEMENTS.....	I
CONTENTS.....	V
INTRODUCTION TO THE TUTORIAL.....	1
HOW TO USE THIS TUTORIAL .....	1
EPI INFO™ RESOURCES .....	2
FILE SET-UP .....	3
FILE DOWNLOAD LIST .....	4
TUTORIAL PROCESS FLOW .....	5
INTRODUCTION TO THE SCENARIO.....	6
TO DO LIST FOR LESSONS 1-10.....	7
MAKE VIEW: CREATE A SURVEY....	<b>ERROR! BOOKMARK NOT DEFINED.</b>
GETTING STARTED WITH MAKE VIEW .....	<b>ERROR! BOOKMARK NOT DEFINED.</b>
THE MAKE VIEW WORKSPACE .....	<b>ERROR! BOOKMARK NOT DEFINED.</b>
NAVIGATING MAKE VIEW .....	<b>ERROR! BOOKMARK NOT DEFINED.</b>
CREATE A PROJECT .....	<b>ERROR! BOOKMARK NOT DEFINED.</b>
THE FIELD DEFINITION BOX .....	<b>ERROR! BOOKMARK NOT DEFINED.</b>
FIELD OR VARIABLE TYPES.....	<b>ERROR! BOOKMARK NOT DEFINED.</b>
CREATE FIELDS PART 1 .....	<b>ERROR! BOOKMARK NOT DEFINED.</b>
CREATE A LABEL/TITLE FIELD .....	<b>ERROR! BOOKMARK NOT DEFINED.</b>
CREATE A LEGAL VALUE FIELD .....	<b>ERROR! BOOKMARK NOT DEFINED.</b>
CREATE A DATE FIELD .....	<b>ERROR! BOOKMARK NOT DEFINED.</b>
CREATE A NUMERIC FIELD.....	<b>ERROR! BOOKMARK NOT DEFINED.</b>
SET THE TAB ORDER.....	<b>ERROR! BOOKMARK NOT DEFINED.</b>

NAME THE PAGE ....	<b>ERROR! BOOKMARK NOT DEFINED.</b>
CREATE A CODE TABLE .....	<b>ERROR! BOOKMARK NOT DEFINED.</b>
FORMATTING OPTIONS .....	<b>ERROR! BOOKMARK NOT DEFINED.</b>
CHANGING THE BACKGROUND COLOR .....	<b>ERROR! BOOKMARK NOT DEFINED.</b>
CHANGING THE GRID SETTINGS .....	<b>ERROR! BOOKMARK NOT DEFINED.</b>
RESIZING FIELDS.....	<b>ERROR! BOOKMARK NOT DEFINED.</b>
ALIGNING FIELDS ...	<b>ERROR! BOOKMARK NOT DEFINED.</b>
COPYING AND PASTING FIELDS ..	<b>ERROR! BOOKMARK NOT DEFINED.</b>
CREATE FIELDS PART 2.....	<b>ERROR! BOOKMARK NOT DEFINED.</b>
ADD A NEW PAGE..	<b>ERROR! BOOKMARK NOT DEFINED.</b>
CREATE A CHECKBOX .....	<b>ERROR! BOOKMARK NOT DEFINED.</b>
CREATE A GROUP... ..	<b>ERROR! BOOKMARK NOT DEFINED.</b>
CREATE A MIRROR FIELD .....	<b>ERROR! BOOKMARK NOT DEFINED.</b>
CREATE A YES/NO FIELD .....	<b>ERROR! BOOKMARK NOT DEFINED.</b>
MAKE VIEW: CHECK CODE .....	<b>ERROR! BOOKMARK NOT DEFINED.</b>
GETTING STARTED WITH CHECK CODE .....	<b>ERROR! BOOKMARK NOT DEFINED.</b>
THE PROGRAM EDITOR WORKSPACE .....	<b>ERROR! BOOKMARK NOT DEFINED.</b>
NAVIGATING THE PROGRAM EDITOR .....	<b>ERROR! BOOKMARK NOT DEFINED.</b>
CREATE A SKIP PATTERN.....	<b>ERROR! BOOKMARK NOT DEFINED.</b>
USE THE ASSIGN COMMAND .....	<b>ERROR! BOOKMARK NOT DEFINED.</b>

USE THE DIALOG COMMAND.....**ERROR!**  
**BOOKMARK NOT DEFINED.**

ENTER DATA..**ERROR! BOOKMARK NOT DEFINED.**

GETTING STARTED WITH ENTER..**ERROR!**  
**BOOKMARK NOT DEFINED.**

THE ENTER DATA WORKSPACE....**ERROR!**  
**BOOKMARK NOT DEFINED.**

NAVIGATING ENTER DATA.....**ERROR!**  
**BOOKMARK NOT DEFINED.**

ENTER DATA INTO YOUR VIEW....**ERROR!**  
**BOOKMARK NOT DEFINED.**

CHECK CODE TROUBLESHOOTING  
.....**ERROR! BOOKMARK NOT DEFINED.**

ENTER DATA INTO THE SAMPLE VIEW  
.....**ERROR! BOOKMARK NOT DEFINED.**

FIND RECORDS.....**ERROR! BOOKMARK NOT DEFINED.**

ANALYSIS: BASICS..**ERROR! BOOKMARK NOT DEFINED.**

GETTING STARTED WITH ANALYSIS  
.....**ERROR! BOOKMARK NOT DEFINED.**

THE ANALYSIS WORKSPACE.....**ERROR!**  
**BOOKMARK NOT DEFINED.**

READING IN A PROJECT .....**ERROR!**  
**BOOKMARK NOT DEFINED.**

READ/IMPORT AN EPI INFO™ PROJECT  
.....**ERROR! BOOKMARK NOT DEFINED.**

NAVIGATING ANALYSIS.....**ERROR!**  
**BOOKMARK NOT DEFINED.**

COMMANDS IN THIS LESSON .....**ERROR!**  
**BOOKMARK NOT DEFINED.**

USE THE LIST COMMAND.....**ERROR!**  
**BOOKMARK NOT DEFINED.**

CREATE A WEB FORMAT LIST .....**ERROR!**  
**BOOKMARK NOT DEFINED.**

USE THE SORT COMMAND.....**ERROR!**  
**BOOKMARK NOT DEFINED.**

CREATE A LIST OF SORTED VARIABLES  
.....**ERROR! BOOKMARK NOT DEFINED.**

USE THE SELECT COMMAND..... **ERROR!**  
**BOOKMARK NOT DEFINED.**

LIST THE SELECTED RECORDS..... **ERROR!**  
**BOOKMARK NOT DEFINED.**

SELECT BASED ON AGE ..... **ERROR!**  
**BOOKMARK NOT DEFINED.**

ANALYSIS: CREATING STATISTICS**ERROR!**  
**BOOKMARK NOT DEFINED.**

TEAR OUT Q/A SHEET ..... **ERROR!**  
**BOOKMARK NOT DEFINED.**

COMMANDS IN THIS LESSON..... **ERROR!**  
**BOOKMARK NOT DEFINED.**

DISPLAY FILE**ERROR! BOOKMARK NOT DEFINED.**

SET OPTIONS **ERROR! BOOKMARK NOT DEFINED.**

MERGE FILES .**ERROR! BOOKMARK NOT DEFINED.**

CREATE A FREQUENCY ..... **ERROR!**  
**BOOKMARK NOT DEFINED.**

STRATIFY A FREQUENCY ..... **ERROR!**  
**BOOKMARK NOT DEFINED.**

SELECT VARIABLES FOR A FREQUENCY  
..... **ERROR! BOOKMARK NOT DEFINED.**

CREATE A MEANS .. **ERROR! BOOKMARK NOT DEFINED.**

USE THE MEANS COMMAND WITH A  
CROSS-TABULATED VARIABLE .... **ERROR!**  
**BOOKMARK NOT DEFINED.**

CREATE A STRATIFIED MEANS..... **ERROR!**  
**BOOKMARK NOT DEFINED.**

USE SELECT WITH THE MEANS  
COMMAND.... **ERROR! BOOKMARK NOT DEFINED.**

CREATE A TABLE ..... **ERROR! BOOKMARK NOT DEFINED.**

CREATE A 2X2 TABLE ..... **ERROR!**  
**BOOKMARK NOT DEFINED.**

SAVING A PROGRAM ..... **ERROR!**  
**BOOKMARK NOT DEFINED.**

TEST THE SAVED PROGRAM..... **ERROR!**  
**BOOKMARK NOT DEFINED.**



ANALYSIS: EPI GRAPH.....**ERROR!  
BOOKMARK NOT DEFINED.**

GRAPH TYPES**ERROR! BOOKMARK NOT  
DEFINED.**

CREATE A BAR GRAPH.....**ERROR!  
BOOKMARK NOT DEFINED.**

CREATE AND CUSTOMIZE A PIE GRAPH  
..... **ERROR! BOOKMARK NOT DEFINED.**

EXPORT A GRAPH...**ERROR! BOOKMARK  
NOT DEFINED.**

CREATE A ROTATED BAR GRAPH.**ERROR!  
BOOKMARK NOT DEFINED.**

PLOT A NEW GRAPH TYPE.....**ERROR!  
BOOKMARK NOT DEFINED.**

CREATE A STACKED BAR.....**ERROR!  
BOOKMARK NOT DEFINED.**

ANALYSIS: EXPORTING FILES .....**ERROR!  
BOOKMARK NOT DEFINED.**

MANAGING DATA..**ERROR! BOOKMARK  
NOT DEFINED.**

COMMANDS IN THIS LESSON .....**ERROR!  
BOOKMARK NOT DEFINED.**

OUTPUT FILES .....**ERROR! BOOKMARK  
NOT DEFINED.**

VIEW OUTPUT FILES .....**ERROR!  
BOOKMARK NOT DEFINED.**

USE THE HEADER COMMAND .....**ERROR!  
BOOKMARK NOT DEFINED.**

USE THE PRINTOUT COMMAND..**ERROR!  
BOOKMARK NOT DEFINED.**

ROUTEOUT DATA TO A NEW FILE  
..... **ERROR! BOOKMARK NOT DEFINED.**

DEFINE AND RECODE .....**ERROR!  
BOOKMARK NOT DEFINED.**

CREATING AND WRITING NEW DATA  
TABLES ..... **ERROR! BOOKMARK NOT  
DEFINED.**

WRITE AND APPEND TABLES.....**ERROR!  
BOOKMARK NOT DEFINED.**

WRITE A FILE TO EXCEL.....**ERROR!  
BOOKMARK NOT DEFINED.**

ANALYSIS: DATA MANAGEMENT FOR  
MAPS.....**ERROR! BOOKMARK NOT  
DEFINED.**

GETTING STARTED WITH EPI MAP  
..... **ERROR! BOOKMARK NOT DEFINED.**

COMMANDS IN THIS LESSON..... **ERROR!  
BOOKMARK NOT DEFINED.**

AGGREGATE DATA IN ANALYSIS . **ERROR!  
BOOKMARK NOT DEFINED.**

CREATE A CHOROPLETH MAP FROM  
ANALYSIS.....**ERROR! BOOKMARK NOT  
DEFINED.**

AGGREGATE DATA FOR A CASE BASED  
MAP .....**ERROR! BOOKMARK NOT  
DEFINED.**

EPI MAP.....**ERROR! BOOKMARK NOT  
DEFINED.**

USING EPI MAP ..... **ERROR! BOOKMARK  
NOT DEFINED.**

THE EPI MAP WORKSPACE..... **ERROR!  
BOOKMARK NOT DEFINED.**

NAVIGATING EPI MAP..... **ERROR!  
BOOKMARK NOT DEFINED.**

MAPS TYPES..**ERROR! BOOKMARK NOT  
DEFINED.**

CREATE A CHOROPLETH MAP ..... **ERROR!  
BOOKMARK NOT DEFINED.**

CHANGING MAP PROPERTIES ..... **ERROR!  
BOOKMARK NOT DEFINED.**

VIEWING MAP INFORMATION ..... **ERROR!  
BOOKMARK NOT DEFINED.**

MAP TIPS .....**ERROR! BOOKMARK NOT  
DEFINED.**

INFORMATION ICON..... **ERROR!  
BOOKMARK NOT DEFINED.**

FIND ICON.....**ERROR! BOOKMARK NOT  
DEFINED.**

SAVING A .MAP FILE ..... **ERROR!  
BOOKMARK NOT DEFINED.**

CREATE A CASE-BASED MAP..... **ERROR!  
BOOKMARK NOT DEFINED.**

ADD TEXT TO A MAP ..... **ERROR!**  
**BOOKMARK NOT DEFINED.**  
 CREATE A POINT MAP ..... **ERROR!**  
**BOOKMARK NOT DEFINED.**  
 EDIT SHAPEFILE POINTS ..... **ERROR!**  
**BOOKMARK NOT DEFINED.**  
 APPLY STANDARD LABELS TO A MAP  
 ..... **ERROR! BOOKMARK NOT DEFINED.**  
 APPLY ADVANCED LABELS TO A MAP  
 ..... **ERROR! BOOKMARK NOT DEFINED.**  
 ADD A SHAPE LAYER..... **ERROR!**  
**BOOKMARK NOT DEFINED.**  
 SAVE A MAP AS A BITMAP FILE.... **ERROR!**  
**BOOKMARK NOT DEFINED.**

EPI REPORT .... **ERROR! BOOKMARK NOT DEFINED.**

GETTING STARTED WITH EPI REPORT  
 ..... **ERROR! BOOKMARK NOT DEFINED.**  
 THE EPI REPORT WORKSPACE ..... **ERROR!**  
**BOOKMARK NOT DEFINED.**  
 NAVIGATING EPI REPORT ..... **ERROR!**  
**BOOKMARK NOT DEFINED.**  
 REPORT DATA ..... **ERROR! BOOKMARK NOT DEFINED.**  
 INSERT A LABEL..... **ERROR! BOOKMARK NOT DEFINED.**  
 INSERT A LINE..... **ERROR! BOOKMARK NOT DEFINED.**  
 INSERT A VARIABLE ..... **ERROR!**  
**BOOKMARK NOT DEFINED.**  
 USING ANALYSIS DATA ..... **ERROR!**  
**BOOKMARK NOT DEFINED.**  
 EDITING REPORT ELEMENTS..... **ERROR!**  
**BOOKMARK NOT DEFINED.**  
 CHANGE TABLE FONTS ..... **ERROR!**  
**BOOKMARK NOT DEFINED.**  
 RESIZE TABLES ..... **ERROR! BOOKMARK NOT DEFINED.**  
 INSERT A NEW PAGE..... **ERROR!**  
**BOOKMARK NOT DEFINED.**  
 INSERT A TABLE SHELL..... **ERROR!**  
**BOOKMARK NOT DEFINED.**

INSERT AGGREGATE DATA..... **ERROR!**  
**BOOKMARK NOT DEFINED.**  
 CREATE A LINE LISTING GROUP... **ERROR!**  
**BOOKMARK NOT DEFINED.**  
 INSERT AN IMAGE . **ERROR! BOOKMARK NOT DEFINED.**

INTERMEDIATE ANALYSIS ..... **ERROR!**  
**BOOKMARK NOT DEFINED.**

SCENARIO ..... **ERROR! BOOKMARK NOT DEFINED.**  
 TO DO LIST FOR INTERMEDIATE ANALYSIS LESSON. **ERROR! BOOKMARK NOT DEFINED.**  
 TEAR OUT ANSWER SHEET ..... **ERROR!**  
**BOOKMARK NOT DEFINED.**  
 ADVANCED STATISTICS..... **ERROR!**  
**BOOKMARK NOT DEFINED.**  
 RELATE COMMAND ..... **ERROR!**  
**BOOKMARK NOT DEFINED.**  
 WHAT IS BRFSS? .... **ERROR! BOOKMARK NOT DEFINED.**  
 HOW TO GET BRFSS DATA..... **ERROR!**  
**BOOKMARK NOT DEFINED.**  
 READ/IMPORT THE BRFSS DATA. **ERROR!**  
**BOOKMARK NOT DEFINED.**  
 CREATE AN IF/THEN STATEMENT**ERROR!**  
**BOOKMARK NOT DEFINED.**  
 COMPLEX SAMPLE FREQUENCY.. **ERROR!**  
**BOOKMARK NOT DEFINED.**  
 SELECTING SUBGROUPS ..... **ERROR!**  
**BOOKMARK NOT DEFINED.**  
 COMPLEX SAMPLE TABLES ..... **ERROR!**  
**BOOKMARK NOT DEFINED.**  
 CREATE A FREQUENCY ..... **ERROR!**  
**BOOKMARK NOT DEFINED.**  
 SAMPLING SCHEME..... **ERROR!**  
**BOOKMARK NOT DEFINED.**  
 IMPORT CENSUS DATA/HTML FORMAT  
 ..... **ERROR! BOOKMARK NOT DEFINED.**  
 FORMATTING WITH LIST UPDATE  
 ..... **ERROR! BOOKMARK NOT DEFINED.**  
 SELECTING WITH STRING LENGTH  
 ..... **ERROR! BOOKMARK NOT DEFINED.**

DEFINE AND ASSIGN NEW VARIABLES  
..... **ERROR! BOOKMARK NOT DEFINED.**  
CREATE A NUMERATOR TABLE.....**ERROR!**  
**BOOKMARK NOT DEFINED.**  
CREATE A RELATE ...**ERROR! BOOKMARK**  
**NOT DEFINED.**  
CREATE A WEIGHT VARIABLE .....**ERROR!**  
**BOOKMARK NOT DEFINED.**  
CREATE A PSU VARIABLE.....**ERROR!**  
**BOOKMARK NOT DEFINED.**  
COMPUTE THE COUNTY CHILD  
PREVALENCE. **ERROR! BOOKMARK NOT**  
**DEFINED.**  
MORTALITY RATES. **ERROR! BOOKMARK**  
**NOT DEFINED.**  
10 YEAR TRENDS- HOSPITAL DISCHARGE  
DATA..... **ERROR! BOOKMARK NOT**  
**DEFINED.**  
3 YEAR RATES- HOSPITAL DISCHARGE  
DATA..... **ERROR! BOOKMARK NOT**  
**DEFINED.**  
MAPPING RATES .....**ERROR! BOOKMARK**  
**NOT DEFINED.**  
INCOME AND ZIP CODE SCATTER PLOT  
..... **ERROR! BOOKMARK NOT DEFINED.**  
RISK RATIO .... **ERROR! BOOKMARK NOT**  
**DEFINED.**  
USE THE DIALOG COMMAND .....**ERROR!**  
**BOOKMARK NOT DEFINED.**  
STATCALC- ESTIMATE SAMPLE SIZE  
..... **ERROR! BOOKMARK NOT DEFINED.**  
  
APPENDIX A- CODE SHEET .....**ERROR!**  
**BOOKMARK NOT DEFINED.**

APPENDIX B- PARENT SCHOOL ASTHMA  
PRE-INTERVENTION SURVEY..... **ERROR!**  
**BOOKMARK NOT DEFINED.**

APPENDIX C- DATA ENTRY SURVEYS  
..... **ERROR! BOOKMARK NOT DEFINED.**

APPENDIX D SKILLS REVIEWS ANSWER  
KEY.....**ERROR! BOOKMARK NOT**  
**DEFINED.**

APPENDIX E- LESSON 5 ANSWER KEY  
..... **ERROR! BOOKMARK NOT DEFINED.**

APPENDIX F- INTERMEDIATE ANALYSIS  
ANSWER KEY. **ERROR! BOOKMARK NOT**  
**DEFINED.**

APPENDIX G- PREPARING DATA FOR USE  
IN THE EPI INFO™ TUTORIAL ..... **ERROR!**  
**BOOKMARK NOT DEFINED.**

APPENDIX H- GLOSSARY ..... **ERROR!**  
**BOOKMARK NOT DEFINED.**

APPENDIX I- DATA SOURCES..... **ERROR!**  
**BOOKMARK NOT DEFINED.**

REFERENCES ..**ERROR! BOOKMARK NOT**  
**DEFINED.**



# Introduction to the Tutorial

## *Epi Info™ Health Assessment Tutorial*

**E**pi Info™ is a series of programs for Microsoft Windows for use by public health professionals in conducting outbreak investigations, managing databases for public health surveillance and other tasks, and general database and statistics applications. With Epi Info™ a user can rapidly develop a questionnaire or form, customize the data entry process, and enter and analyze data.

The Epi Info™ program is divided into five core modules: Make View, Enter Data, Analysis, Epi Map, and Epi Report. Each module has stand-alone capabilities; however, using them for one project from start to finish adds functionality and efficiency. The Make View module is the questionnaire or survey designer. You will start your project in Make View, where you will create a survey and begin setting up your database. Using Enter Data, you will populate your database with information specific to your survey. The data entered, along with additional datasets, will be imported into Analysis for detailed study. Data will be plotted in the Epi Map module. Finally, you will use Epi Report to create a presentation of the findings. This training does not cover every component of Epi Info™ and is meant for the beginning and intermediate level user.

## How to Use this Tutorial

This tutorial will introduce you to the basic concepts of Epi Info™. Each lesson builds upon knowledge gained from the previous lesson. It is recommended that you follow the lessons in the order presented. Finish all the listed steps and practices before progressing to the next lesson as many of the lessons build upon data gathered from a previous lesson. Data specific to the course and the scenario will be provided to you as part of the training package. At various points in the course, you will be asked to access this data to complete the lessons. Read the Five Goals listed at the start of each lesson to review the core functions you should understand by the end of each lesson.

### ***Step One***

Read the Overview section for each lesson. Each Overview contains a Getting Started breakdown of the module and information on ways to navigate. The Overview also provides information on the commands, dialog boxes, or other special features that are unique to each module as well as information on navigating the module. Epi Info™ uses standard windows features for navigation such as drop-down boxes and menu navigation, as well as unique features such as wild card (\*) searches. The Overview also provides you with screenshots of the module and introduces you to the basic concepts used in each lesson.

---

### *Step Two*

Complete all the step-by-step instructions to learn the basics. Numbered instructions with some screenshots are provided for you to learn the core functions of each module. Numbered lessons and instructions can be followed and applied when using Epi Info™ outside of the classroom.

### *Step Three*

Complete the Practice Lessons and Skills Review Exercises when provided. Practice lessons build upon skills learned during basic lessons. Practices and reviews are opportunities to try skills without detailed instruction. Skills Reviews will consist of hands-on activities to further your understanding or a series of questions meant to reinforce basic knowledge. An Intermediate Analysis lesson is provided at the end of the course. The Intermediate Analysis Lesson builds upon the skills from earlier lessons and includes tasks that are more complex. Each section in Intermediate Analysis includes real world data examples from sources such as the United States Census Bureau and the Behavioral Risk Factor Surveillance System (BRFSS).

## **Epi Info™ Resources**

Training documentation, technical information, or other resources are available on the Epi Info™ website at [www.cdc.gov/epiinfo](http://www.cdc.gov/epiinfo).

For questions or problems, contact the Helpline at [epiinfo@cdc.gov](mailto:epiinfo@cdc.gov) or call 404.498.6190.

To speak with colleagues around that world about Epi Info™, visit the WebBoard at <http://epiinfo.forum.cdc.gov>.

## File Set-Up

You must have the latest version of Epi Info™ installed on your computer. Check the Epi Info™ website for updates [www.cdc.gov/epiinfo](http://www.cdc.gov/epiinfo).

Once installed, Epi Info™ creates a folder on the C: drive called Epi\_Info. Your tutorial datasets need to be installed inside this folder.

1. From the desktop, open My Computer.
2. Open your Local Disk drive, usually named C.
3. Locate the Epi\_Info folder and open it.
4. If the EIHA Tutorial folder does not already exist, select **File>New>Folder** from the navigation menu.
  - If you have downloaded the EIHA Tutorial folder to a different location, right click the folder and copy/paste it to the new location inside the Epi\_Info folder on your C: drive.
5. Name the folder EIHA Tutorial.
6. Copy (or download) the tutorial datasets to the EIHA Tutorial folder.

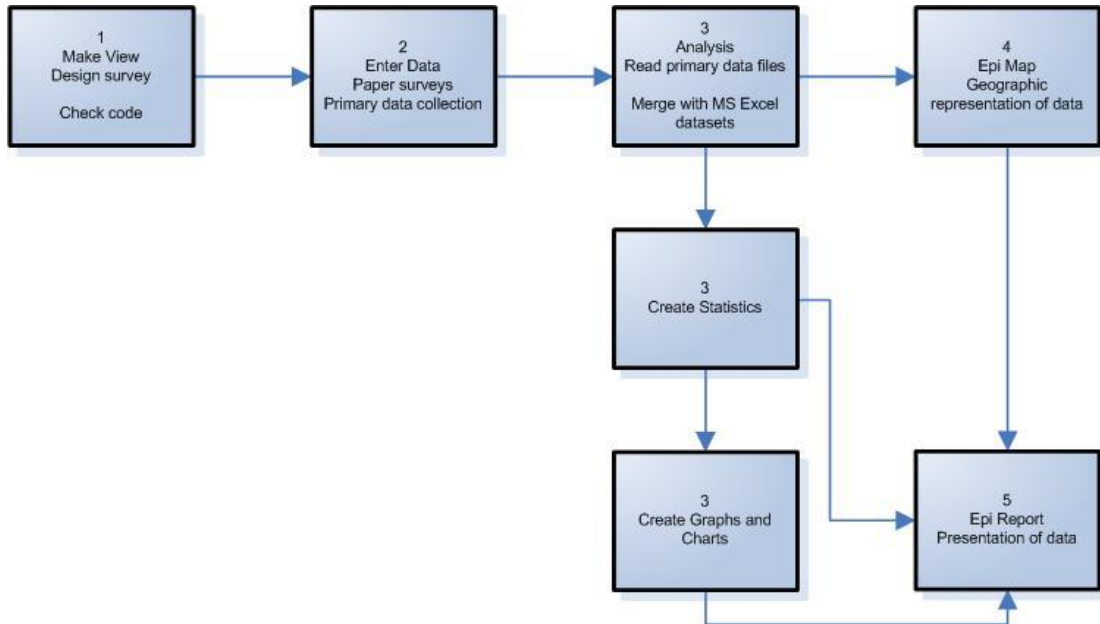
## File Download List

You need download the following files to work through all the lessons in the tutorial. Files are available on the Epi Info™ website on the Tutorials page.

<b>Tutorial Guide</b>  You need one of the following:	EIHAVer#.DOC (MS Word version) EIHAVer#.PDF (Adobe Reader version) EIHAVer#.HTM (HTML Browser version)
<b>Project Files</b>	Albany_demogz.MDB Asthma Survey 2005.MDB Asthma Final.MDB Asthma Survey 2005 Sample.MDB HospitalPoints.MDB SchoolPoints.MDB SymptomsByAgeSample.mdb
<b>MS Excel Files</b>	AsthmaTable.XLS
<b>HTML Files</b>	CensusAge.HTM Frequencies.HTM Frequencies.XML
<b>Epi Report Files</b>	My Epi Report2.EPT My Epi Report2.EPX WMonth Report2.EPT WMonth Report2.EPX
<b>Graphics</b>	WMonthPicGraph2.BMP
<b>Map Files</b>	Albany County boundary_region.DBF Albany County boundary_region.PRJ Albany County boundary_region.SHP Albany County boundary_region.SHX ALBZCTA_region.DBF ALBZCTA_region.PRJ ALBZCTA_region.SHP ALBZCTA_region.SHX



## Tutorial Process Flow



## Introduction to the Scenario

**This tutorial is set up to teach Epi Info™ by following a scenario.** The tutorial includes a survey adapted from one used in New York State; however, the survey data used for the analyses were created for the tutorial. Anonymous data relating to New York State were taken from different datasets referenced in Appendix I: Data Sources. The survey and datasets presented here relate to Community Health Assessments, and specifically Asthma; however, they can be used to teach the Epi Info™ program to any user, and to illustrate how the program can be used to gather, analyze, and present data.

### Scenario

The local health department (LHD) director of County X gets a Request for Proposal (RFP) from the state health department saying there are funds available for an asthma initiative. There is a good chance of getting the funding as the LHD has already done some work with asthma. To apply for the funding, the director meets with the health education coordinator/planner to identify data that is needed to write a strong proposal. The director and the planner determine that there are several types of data that would be useful to present as part of their proposal.

To support the scenario, data has been collected from a variety of current sources. Provided datasets include aggregate data, map, shape, census, and primary data. In this scenario example, you will be using a primary data source (paper survey) to collect information for the sample population of students from County X. You will use Make View to create the electronic survey, Enter to add records to your survey, Analysis to import and analyze results, Epi Map to plot the results, and Epi Report to present your findings. Below is a To-Do list of the basic steps you will be accomplishing to develop the data needed to apply for funds for the asthma initiative.

## **To Do List for Lessons 1-10**

### **Use Make View Create the Electronic Survey**

- Create your project .MDB- Lesson 1
- Create an electronic version of the survey- Lesson 1

### **Use the Make View Program Editor to Develop Check Code**

- Create Check Code to simplify the data entry process- Lesson 2

### **Use Enter Data to Add Student Records**

- Enter records into your survey and data table- Lesson 3

### **Use Analysis to Merge Data and Create Statistics**

- Open your project .MDB in Analysis and view the entered records/data- Lesson 4
- Merge your project .MDB with records from an MS Excel file- Lesson 5
- Create Frequencies, Means, and Tables using your data and record the results- Lesson 5
- Create Graphs using your data and record the results- Lesson 6

### **Use Analysis to Manage and Export Data**

- Use the RECODE command to view date information from the survey in a specified order- Lesson 7
- Export selected data to a new table and create a line graph using the selected records- Lesson 7
- Use the SUMMARIZE and FREQUENCY commands to create aggregate data sets of survey information that can be mapped- Lesson 8

### **Use Epi Map to Develop Maps to Illustrate the Data**

- Create a choropleth and case-based map combination in Epi Map to look for relationships between income and asthma- Lesson 9
- Create Point Maps for the locations of regional hospitals and schools- Lesson 9
- Create a map plotting the count of students with bronchitis per zip code- Lesson 9

### **Use Epi Report to Develop Report Data**

- Use Epi Report to create a report that contains survey data and graphic output from the first nine lessons- Lesson 10

This page intentionally blank.