

Saudi National Disability Registry

Mohammed AlJumah Sultan AlMubarak

On behalf of the Saudi Disability Registry Group

KACST and MoSA

Contents

- Introduction about Saudi Arabia
 - Population
 - Geography
- Disability Status in Saudi
- Some Data from WHS
- Perceived Challenges
- Saudi National Registry
 - Rational
 - Structure
 - Milestone
- Documentary presentation

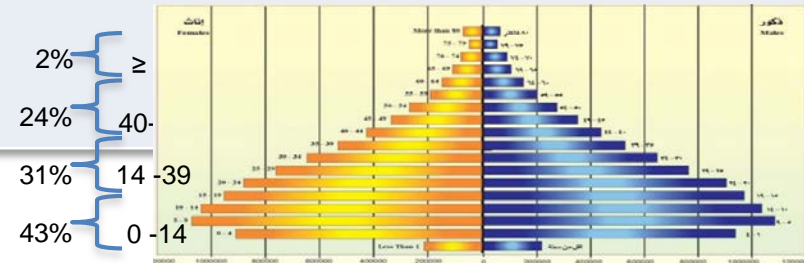
Saudi Arabia – Key Facts



Saudi Arabia

Area	2,149,690 sq. km
Natural resources	Petroleum, natural gas, iron, gold & copper
Population (Million)	28.79 million
country comparison to the world: 47	Urban population: 82.3%
Life Expectancy: 74.58 years	Expatriates: 5.5m
Population Growth: 2.7% / Year	

Age Structure



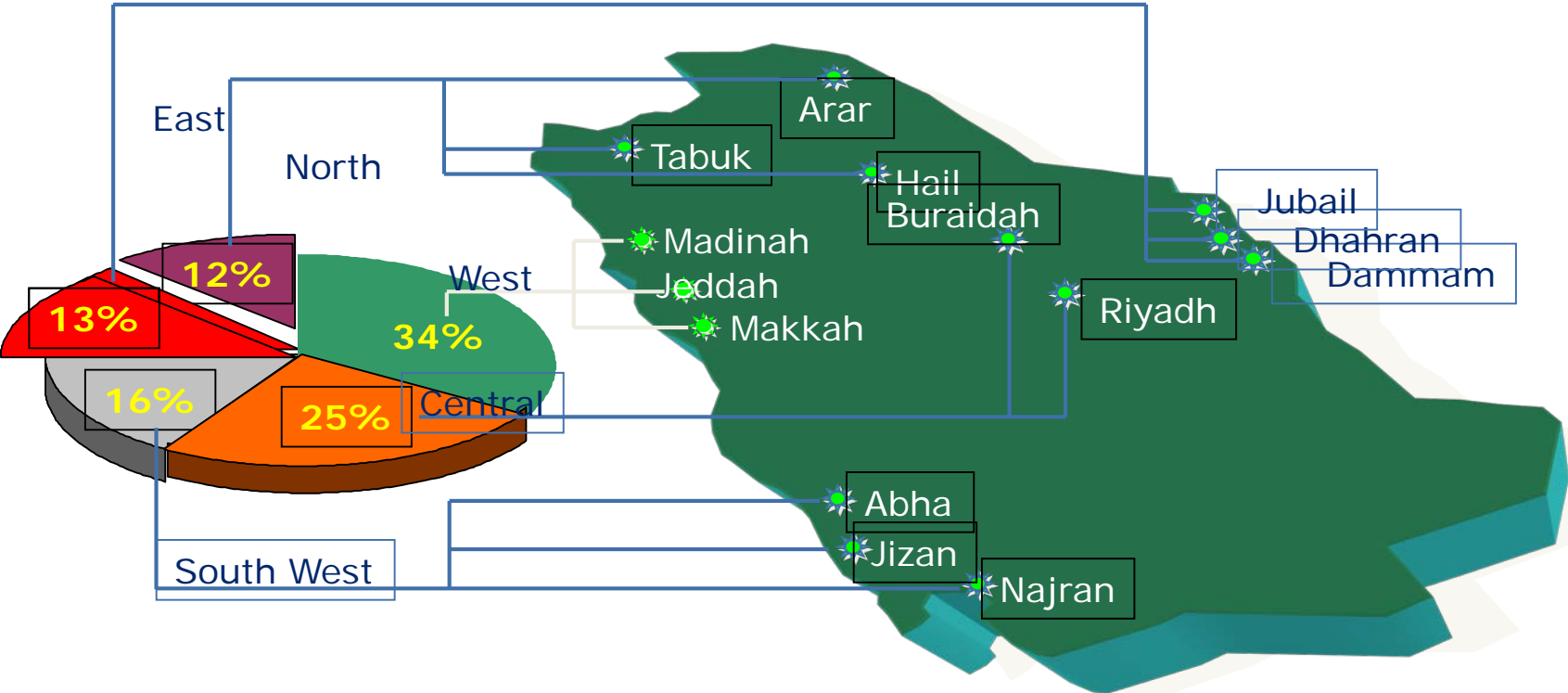
Saudi Arabia – Demography



- ☀ 13 Provinces
- ☀ 150 Cities
- ☀ More than 2000 villages
- ☀ Vast distances between cities

Saudi Arabia has an homogeneous population in that the people share common linguistic, religious and cultural values

Saudi Arabia – Regional Distribution of Population



Economic Overview

Saudi Arabia – Key Facts

Saudi Arabia	
GDP Current Prices (Billion US\$) Country comparison to the world: 21	US\$ \$883.7
GDP per Capita Country comparison to the world: 45	US\$ 30,500
GDP Growth %	5.97%
GDP - composition, by sector of origin	Agriculture: 2% Industry: 65% Services: 33%
Budget Budget Surplus +13.1% Country comparison to the world: 7	Revenues: \$326.5 billion Expenditures: \$234.8 billion
Inflation	4.91%
Total expenditure on health as % of GDP	5.6%
Exports Imports	\$388.4 billion (90% Oil) \$141.8 billion

Status Of Disability Data In KSA

- No single source of national data for disability in KSA
- No formal data collection approach for the country
- Very Limited publications have addressed prevalence of disability in KSA
- In 2007, MOH commissioned the national world health survey as part of the WHO international campaign.
- Despite its limitation of being non disability specific survey, The WHS presented the first opportunity to get an estimate figures on the prevalence of disability in KSA

WHS Questionnaire Structure & Analysis

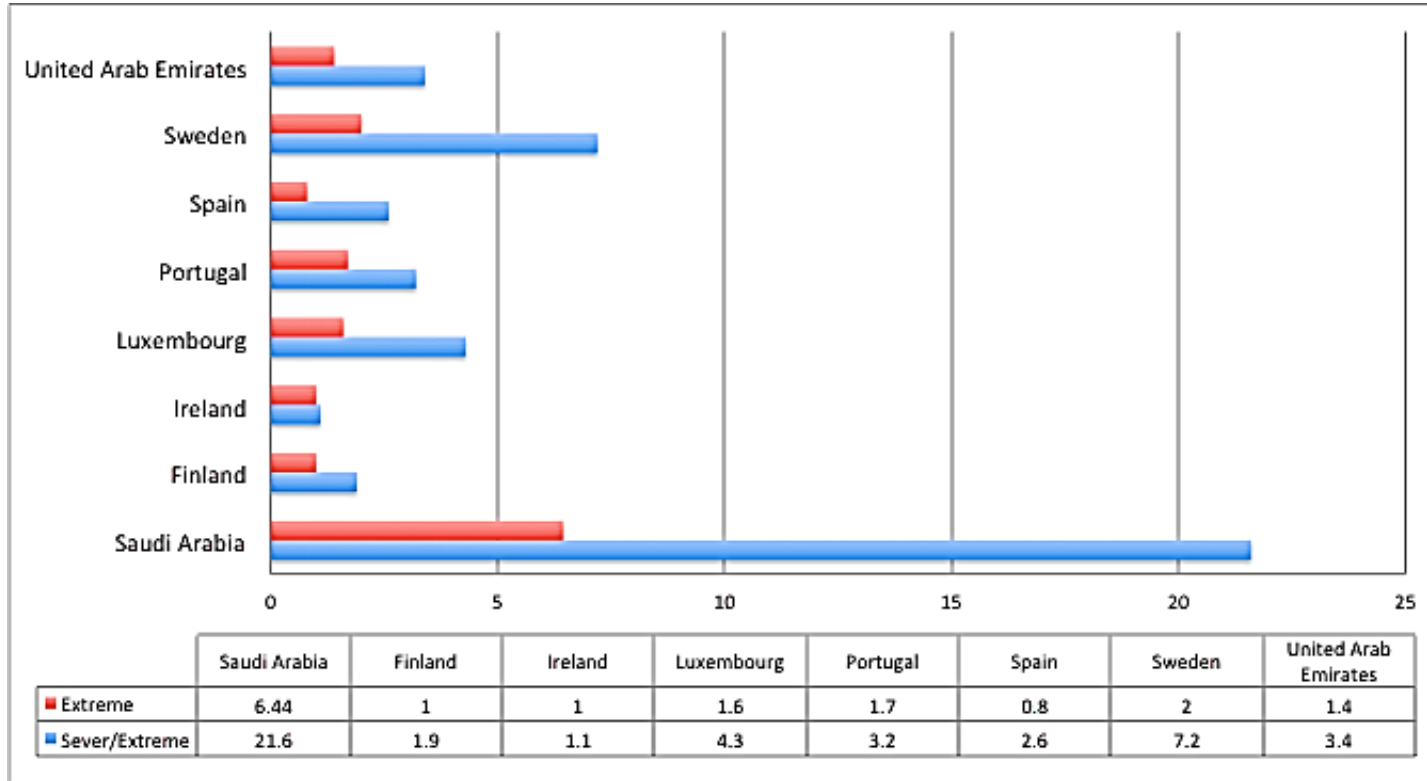
- Total of 8 self reported questions on Mobility, Self Care, Pain and Discomfort, Cognition, interpersonal activities, vision, sleep and energy affect.
- Questions are on 5 points LIKERT scale (ranging from Non to Extreme), asking the patients how they felt about each of the above domains in the past 30 days.
- A subject was considered disabled if he/she has answered any of the questions with “Severe”, or “Extreme”

WHS items involved in assessing

Self-reported assessment scale:		1. None	2. Mild	3. Moderate	4. Severe	5. Extreme/Cannot Do
Mobility						
Q2002	Overall in the last 30 days, how much difficulty did you have with moving around?					
Q2003	In the last 30 days, how much difficulty did you have in vigorous activities, such as running 3 km (or equivalent) or cycling?					
Self Care						
Q2004	Overall in the last 30 days, how much difficulty did you have with <u>selfcare</u> , such as washing or dressing yourself?					
Q2005	In the last 30 days, how much difficulty did you have in taking care of and <u>maintaining</u> your general appearance (e.g. grooming, looking neat and tidy etc.)					
Pain and Discomfort						
Q2007	Overall in the last 30 days, how much of bodily aches or pains did you have?					
Q2008	In the last 30 days, how much bodily discomfort did you have?					
Cognition						
Q2010	Overall in the last 30 days, how much difficulty did you have with <u>concentrating</u> or remembering things?					
Q2011	In the last 30 days, how much difficulty did you have in learning a new task (for example, learning how to get to a new place, learning a new game, learning a new recipe etc.)?					
Interpersonal Activities						
Q2012	Overall in the last 30 days, how much difficulty did you have with personal relationship or participation in the community?					
Q2013	In the last 30 days, how much difficulty did you have in dealing with conflicts and tensions with others?					
Vision						
*Q2021,22	Do you wear glasses or contact lenses?					
Q2023	In the last 30 days, how much difficulty did you have in seeing and recognizing a person you know across the road (i.e. from a distance of about 20 meters)?					
Q2024	In the last 30 days, how much difficulty did you have in seeing and recognizing an object at arm's length or in reading?					
Sleep and Energy						
Q2016	Overall in the last 30 days, how much of a problem did you have with sleeping, such as falling asleep, waking up frequently during the night or waking up too early in the morning?					
Q2017	In the last 30 days, how much of a problem did you have due to not feeling rested and refreshed during the day (e.g. feeling tired, not having energy)?					
Affect						
Q2018	Overall in the last 30 days, how much of a problem did you have with feeling sad, low or depressed?					
Q2019	Overall in the last 30 days, how much of a problem did you have with <u>worry or anxiety</u> ?					

Prevalence of Disability IN KSA is Considerably higher than that of other high income countries

Prevalence of Subjects reported Extreme or Severe/Extreme Difficulties in one or more domains



In KSA, the Patterns of Disability Severity level Differs Between Males and Females

	Men (n=2852; Weighted <u>n=6,810,881.8</u>) or % (SE)	Women (n=2947; Weighted <u>n=7,086,101.6</u>) % (SE)
Severe/Extreme Disability	16.21(0.86)	26.78 (1.07)
Extreme Disability	5.08(0.49)	7.76 (0.58)

Source: Ministry of Health, Saudi Arabia 2007 WHS Survey

Prevalence of Extreme Disability is higher among older age groups.

	N	Weighted N	No	Yes
Age				
≤19 Years	326	758,352	96.96(1.20)	3.04(1.20)
20-29 Years	1708	4,079,240.8	96.03(0.57)	3.97(0.57)
30-39 Years	1491	3,635,929.4	96.56(0.65)	3.44(0.65)
40-49 Years	1048	2,505,355.4	96.72(0.61)	3.28(0.61)
50-59 Years	582	1,422,294.3	91.19(1.32)	8.81(1.32)
60-69 Years	343	814,935.6	85.86(2.15)	14.14(2.15)
>70 Years	301	680,869.8	61.39(3.11)	38.61(3.11)

Source: Ministry of Health, Saudi Arabia, 2007 WHS Survey

At older Age Women have Twice the Prevalence of Extreme Disability Compared to Men in the Same Age Group

	N	Weighted N	No	Yes
Male				
≤19 Years	168	377,797.4	96.29(2.04)	3.71(2.04)
20-29 Years	797	1,893,415.6	97.91(0.62)	2.09(0.62)
30-39 Years	647	1,595,906.4	98.55(0.61)	1.45(0.61)
40-49 Years	580	1,363,722.1	97.61(0.71)	2.39(0.71)
50-59 Years	304	726,991.9	94.02(1.47)	5.98(1.47)
60-69 Years	184	451,930.7	90.47(2.58)	9.53(2.58)
>70 Years	172	401,111.6	62.64(4.35)	37.36(4.35)
Female				
≤19 Years	158	380,554.6	97.62(1.27)	2.38(1.27)
20-29 Years	911	2,185,825.2	94.41(0.93)	5.59(0.93)
30-39 Years	844	2,040,023	95.01(0.96)	4.99(0.96)
40-49 Years	468	1,141,633.3	95.65(1.04)	4.35(1.04)
50-59 Years	278	695,302.4	88.24(2.22)	11.76(2.22)
60-69 Years	159	363,004.9	80.12(3.61)	19.88(3.61)
>70 Years	129	279,764.3	59.60(4.83)	40.40(4.83)

Source: Ministry of Health, Saudi Arabia, 2007 WHS Survey

Disability Population

	N=5799 (Weighted N=13,896,983.4), % (SE)				
	None	Mild	Moderate	Severe	Extreme
• Mobility					
Moving Around	78.17 (0.68)	11.99(0.52)	6.19 (0.38)	3.15 (0.29)	0.50 (0.10)
Vigorous Activities	63.58(0.92)	15.23 (0.60)	9.01(0.48)	8.25 (0.45)	3.92(0.29)
• Self care					
Self care	91.41(0.43)	5.21 (0.35)	2.04(0.20)	1.02(0.15)	0.32(0.08)
Appearance	91.60 (0.43)	4.71(0.33)	2.49(0.23)	0.87(0.13)	0.33(0.08)
• Pain and Discomfort					
Bodily Pain	67.03(0.84)	19.68(0.64)	8.26(0.44)	4.76(0.36)	0.27(0.08)
Bodily Discomfort	68.00(0.84)	19.14(0.64)	8.58(0.46)	3.74(0.32)	0.54(0.12)
• Cognition					
Memory	75.44(0.75)	15.72(0.60)	6.25(0.38)	2.37(0.23)	0.21(0.08)
Learning	76.60(0.75)	14.06(0.58)	5.36(0.37)	3.03(0.28)	0.95(0.15)

Source: Ministry of Health, Saudi Arabia

Implication Of Disability In KSA

- 2012 Survey report of Central Department of Statistics and Information, Saudi Arabia : 143,000 people above the age of 15 who are out of labor due to disability.
- MoSA Registered beneficiary for the financial support is approximately 400,000 person with disability.

Social Services in Saudi Arabia



وزارة الشؤون الاجتماعية

Ministry of Social Affairs



Ministry of Labor
Kingdom of Saudi Arabia



المؤسسة العامة للتأمينات الاجتماعية
General Organization for Social Insurance

حَقُّ لَكُمْ

Social Service Programs address

- The unemployed
- Persons with disabilities
- Widows and widowers
- Females with no living family members to support them
- Orphans
- Families of those serving custodial sentences
- Victims of natural disasters
- Disability resulting from occupational hazards

Saudi Arabia Healthcare

Healthcare

Saudi Arabia – Key Facts

- Healthcare & Social Development Budget 2013: USD 23.1 b. (+26%)

Total expenditure on health as % of GDP	5.0%
Total expenditure on health per Capita	\$ 1,150
Physicians Density <small>Physicians (All Sectors): 66,014</small>	0.94 physicians/1,000 population
Nursing	129,792
Hospital Bed Density	2.2 beds/1,000 population
Obesity - adult prevalence rate <small>Country comparison to the world:19</small>	35%
Diabetes – adult prevalence rate	20%
Chronic Kidney Disease Prevalence	9.3%

Saudi Arabia – Healthcare Segments

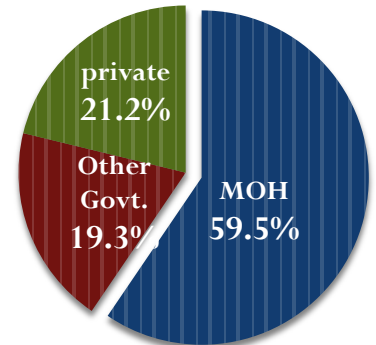
Saudi Healthcare System

Government sector (free)

Private sector (fee)

The Ministry of Health

Independent Government
Bodies



Healthcare

Saudi Arabia – Governmental Sector

- Referral hospitals (e.g. King Faisal Specialist Hospital and Research Center)
- Ministry of higher education hospitals (teaching hospitals)
- Royal commission for Jubail and Yanbu health services
- Security Forces Medical Services
- Army Forces Medical Services
- National guard health affairs
- ARAMCO hospitals



وزارة التعليم العالي
Ministry of Higher Education



Challenges

- limited preexisting epidemiological data
- Wide geographic area
- Large Number of independent stakeholder
- Wide variability of connectivity of stakeholder
- Unclear ownership of the Disability Registry

SAUDI NATIONAL DISABILITY REGISTRY



Objective

To create a database in the form of a national registry, that would

- Provide vital information to the organizations catering to persons with disabilities
- Aid in the provision of necessary services for this population
- Allow information on persons with disabilities to be registered or to add information about persons with disabilities

The Role of the National Registry

- No Centralized Data Hub
- No National standards for Disability classification
- No Coordination between benefits provider

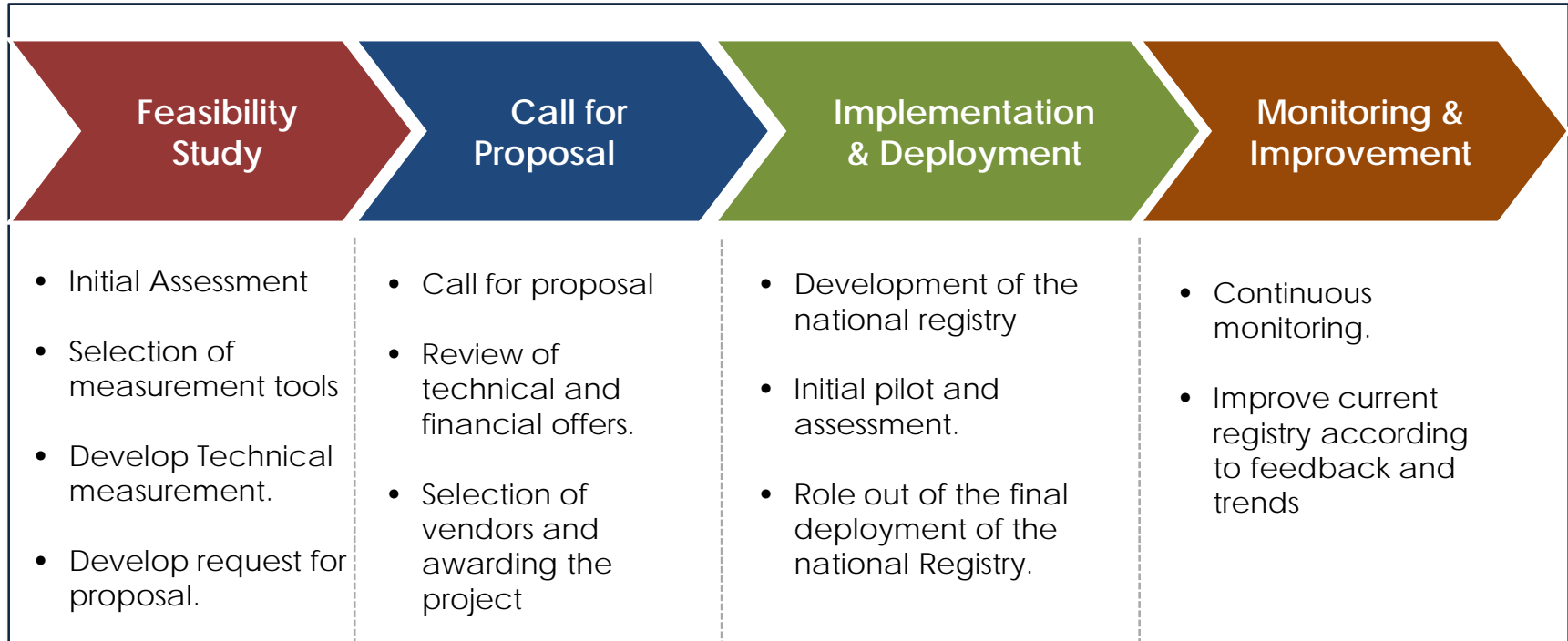


National
Registry For
People With
Disability

- Reliable data for better planning and equitable benefits distribution.
- Employ national standards for disability classification
- Platform for coordination between various stakeholders.

Approach for Developing National Registry for People with Disability

The road map for developing the national registry



Action Plan

- Creation of the team and drafting of the action plan
- Engagement of Stake holders
- Planning for collection of data and information
 - Questionnaire
 - Pilot testing
 - Final questionnaire
 - Standardization and Training

Action Plan (cont...)

- Preparation of the organizational structure of the administrative and technical
 - Examination and study of different managerial and technical structures, local and international
 - Identification of detailed components for specific models of the administrative and technical structure for national records for disability
 - Benefit from consultation services, national, regional and international

Action Plan (cont...)

- Establishment of equipment and facilities
 - Identification of technical requirements
 - Establishment of equipment and facilities
 - Data center
 - Main Office
- Training for staff
 - Questionnaire/data gathering
 - Technical
 - Administrative

Data Source for the Registry

- Interview
 - Questionnaire designed for the registry
 - Integration of the Washington Group Extended Set of Questions (WG ES-F)
- Online input of data

Overview of Questionnaire

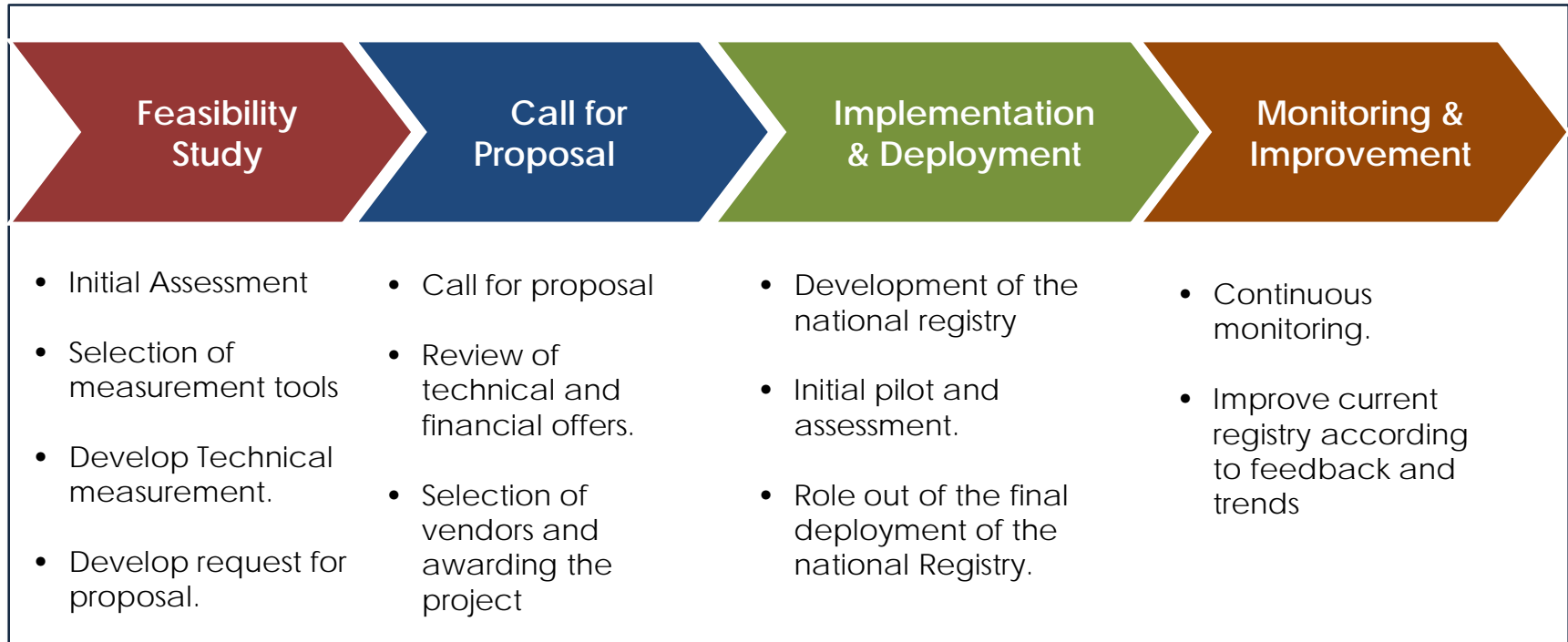
- Demographic data
- Modified Washington Group Extended Set on Functioning (WG ES-F)/ ICF Based Disability Component
- Clinical/ Medical Background
 - Current diseases (ICD-10 Classification)
 - Current Medication
 - Exercise
 - Smoking
 - Alcohol Intake
 - Substance abuse
 - Reproductive function

Overview of Questionnaire (Cont...)

- Disability Related Component
 - Financial Support
 - Other Types of Support
 - Respondent's Perception of Current Support He/She Receives
- Interview details
 - Who conducted the interview
 - Date
 - Respondent
 - Person with disability himself/herself
 - Guardian/other representative
 - Both

Approach for Developing National Registry for People with Disability

The road map for developing the national registry



Progress To date



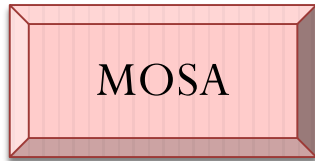
Activities/Milestones

Status

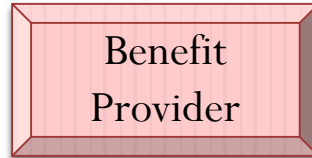
Situation and Stakeholders analysis	Completed
Review of Available disability measure tools	Completed
Translation and Validation of ICF to Arabic	Completed
Develop Data collection and Analysis Protocol	Completed
Develop Human Resources Plan	Completed
Develop budget estimate	Completed
Develop Request for Proposal	Completed

National Registry Process

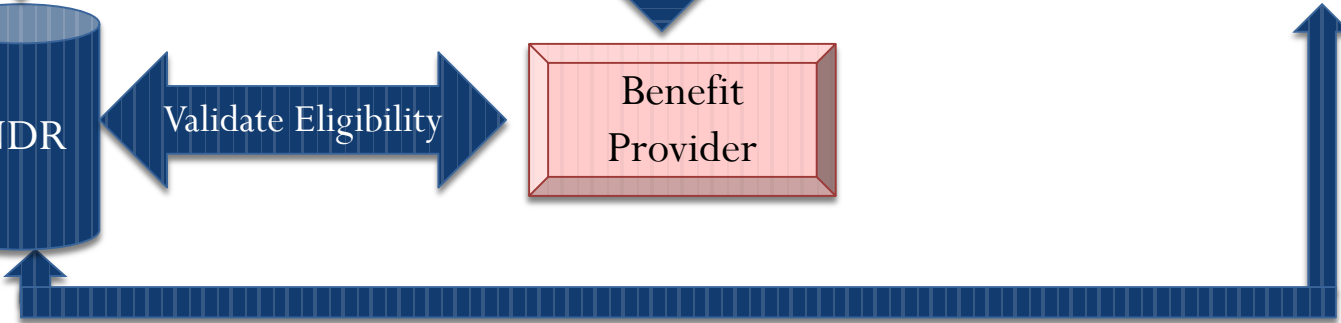
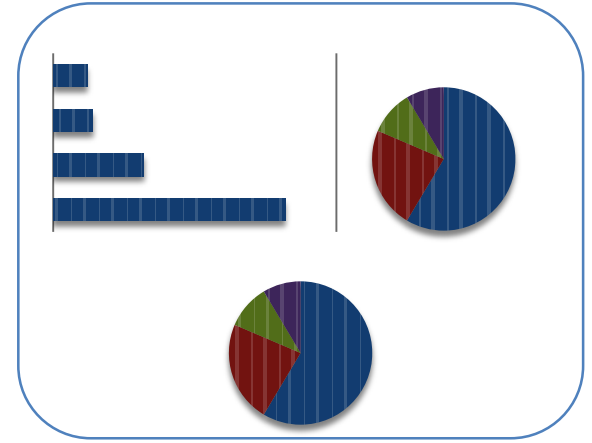
Registration & Validation



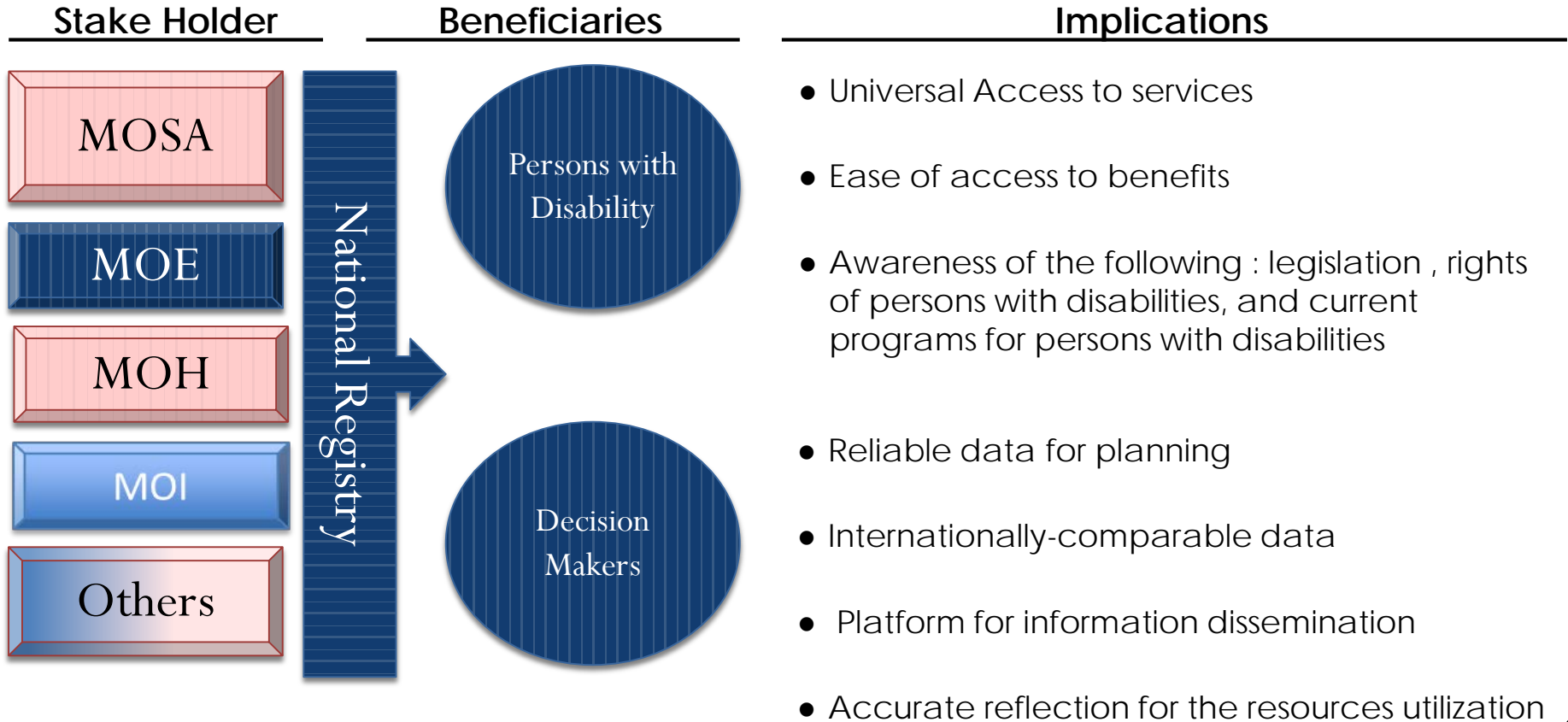
Benefit Request



Reporting and Planning



Impact of The Registry

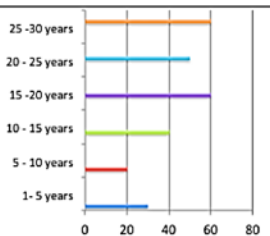
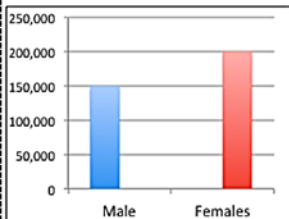


Some of The Key Analytics of the Registry

Who are the individuals with Disability?

350,000 People With Disability

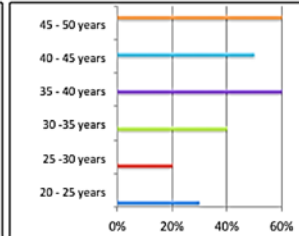
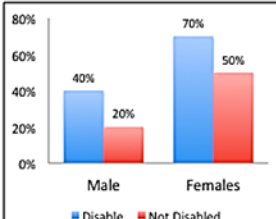
Age Distribution in 1000's Individuals



Employment and Income of Individuals with Disability

Distribution of Unemployment By Gender

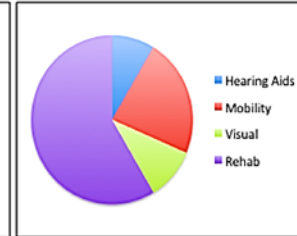
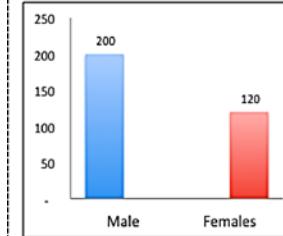
Unemployment by Age Group



Disability Services Utilization and Cost

Total Cost of Services in Million SAR/Year

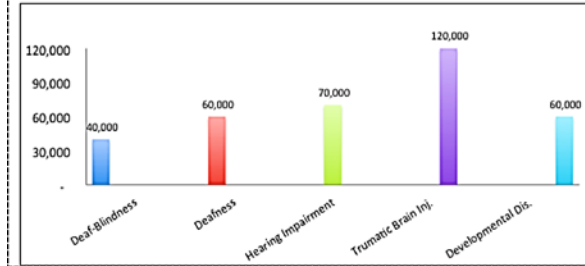
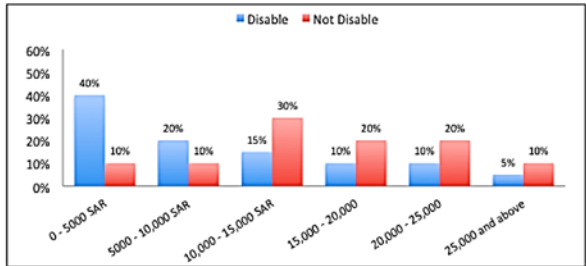
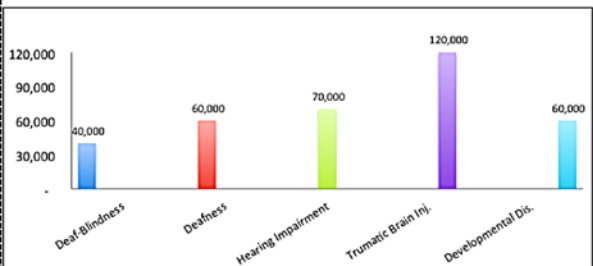
Distribution of Services Utilized



Distribution of Type of Disability Among Individuals with Disability

Distribution of Income Among Working Disabled and Not Disabled individuals

Total cost (in 1000') Allocation by the Type of Disability



THANK YOU