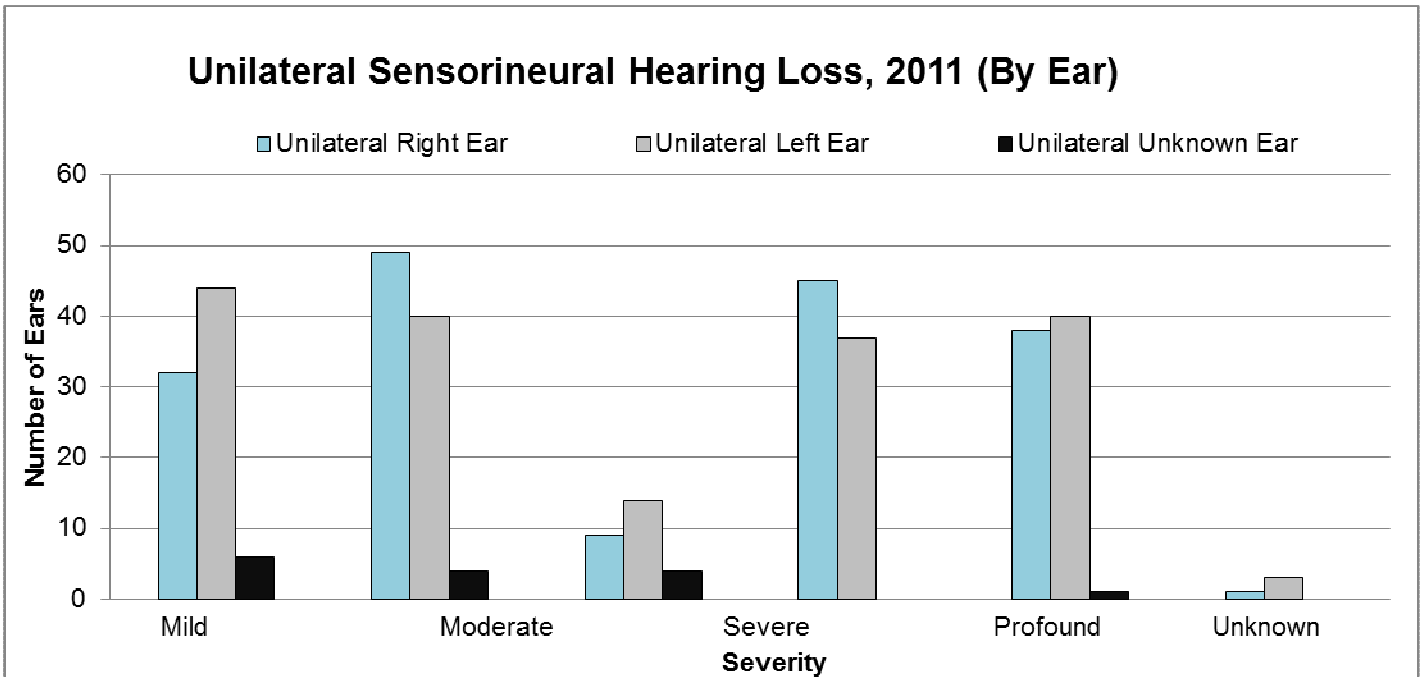
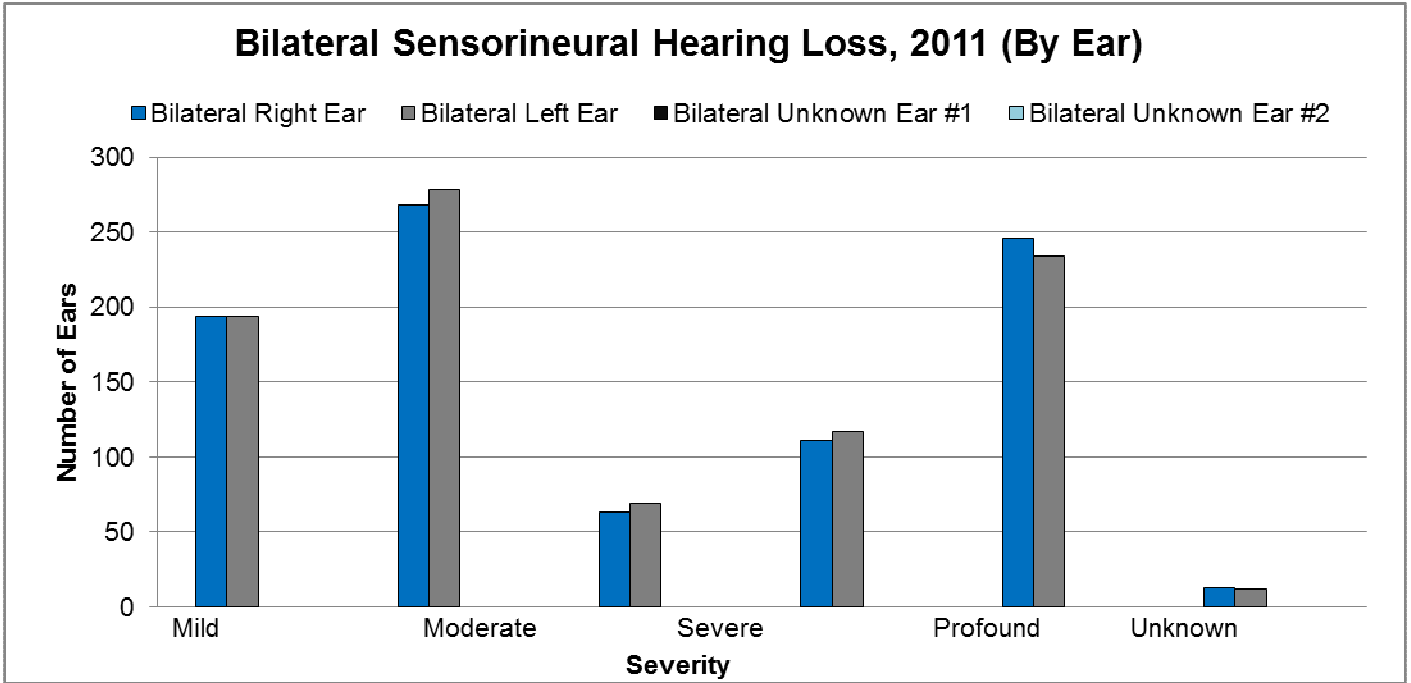


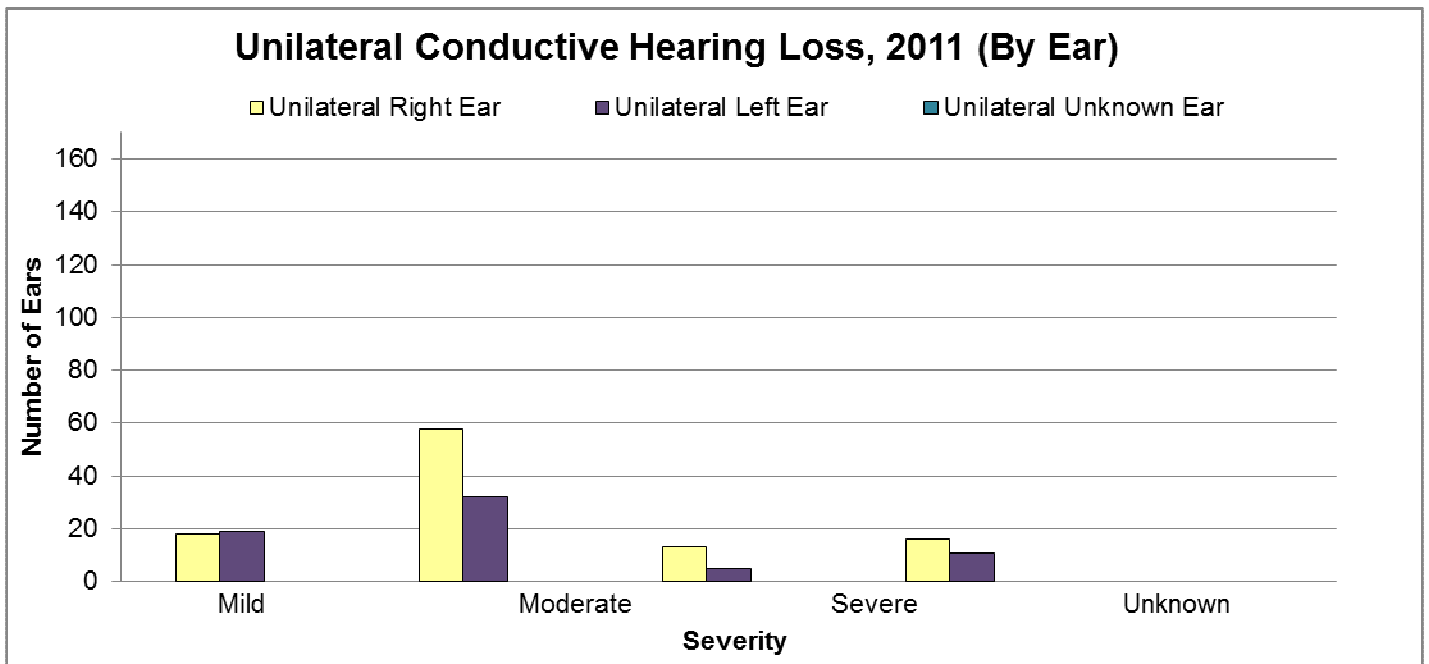
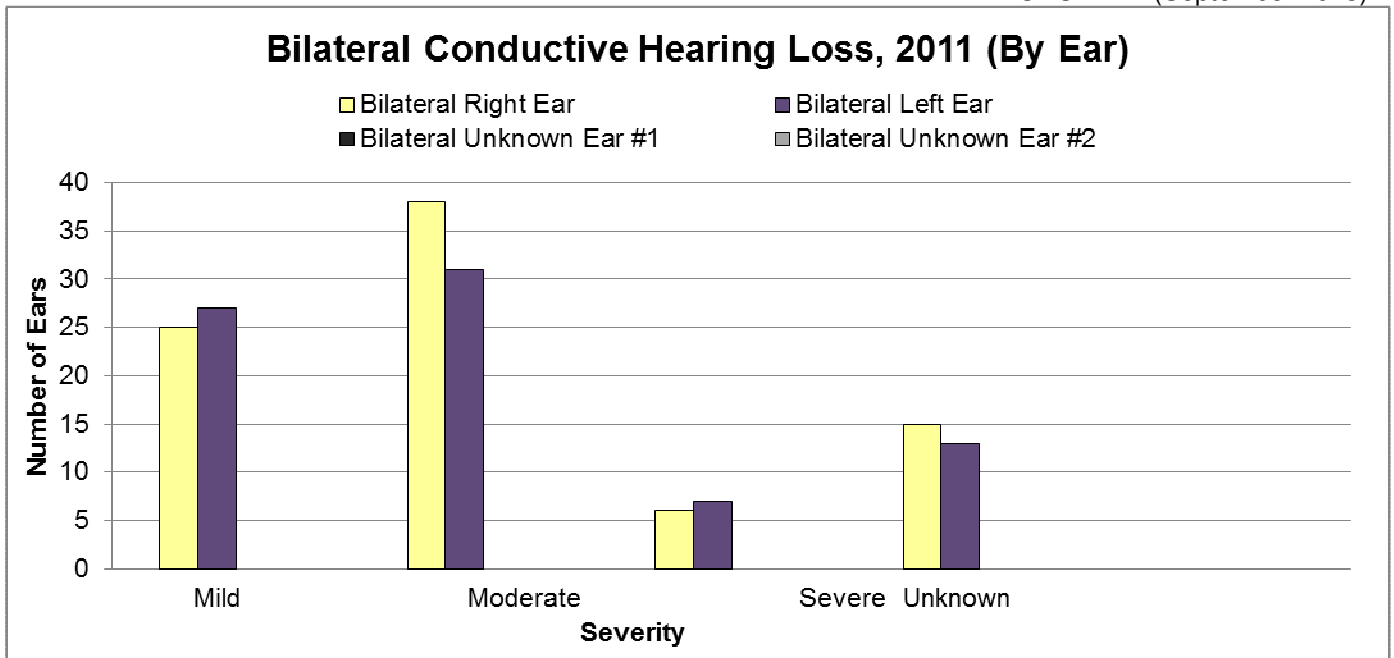
**Type and Severity Summary of Identified Cases of Hearing Loss in 2011 (By Ear):
ASHA**

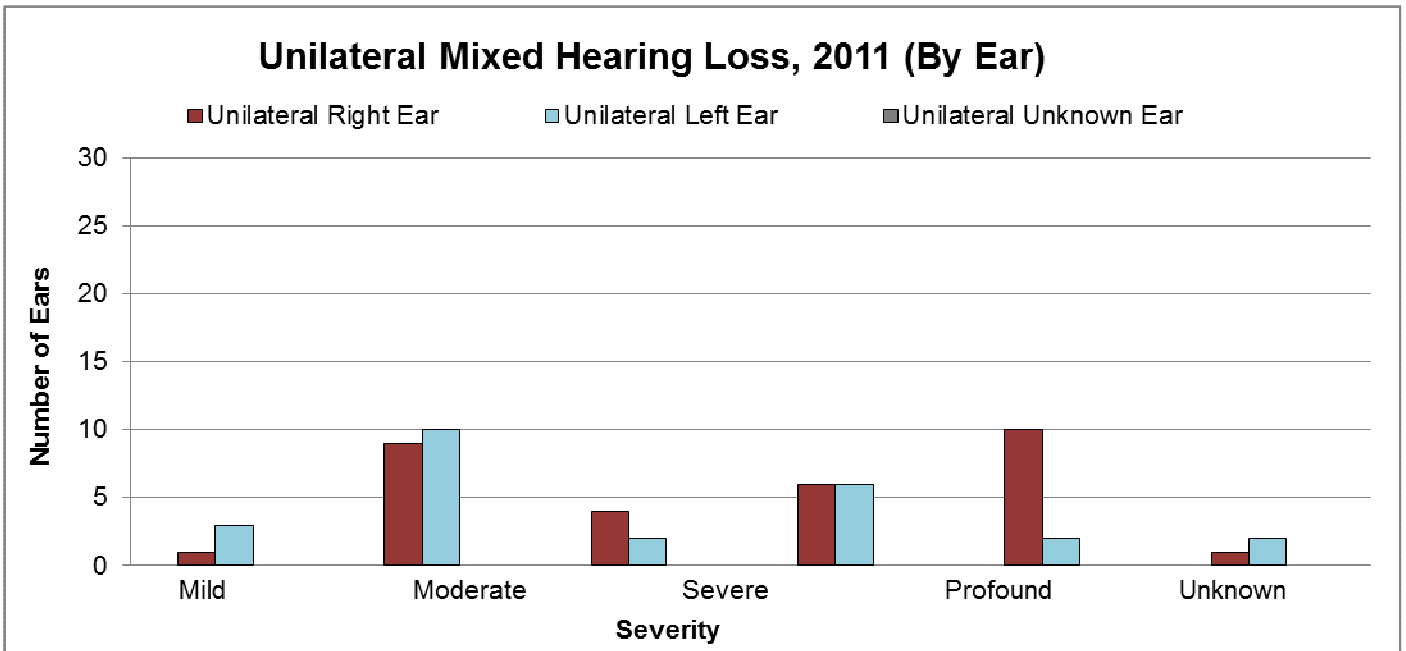
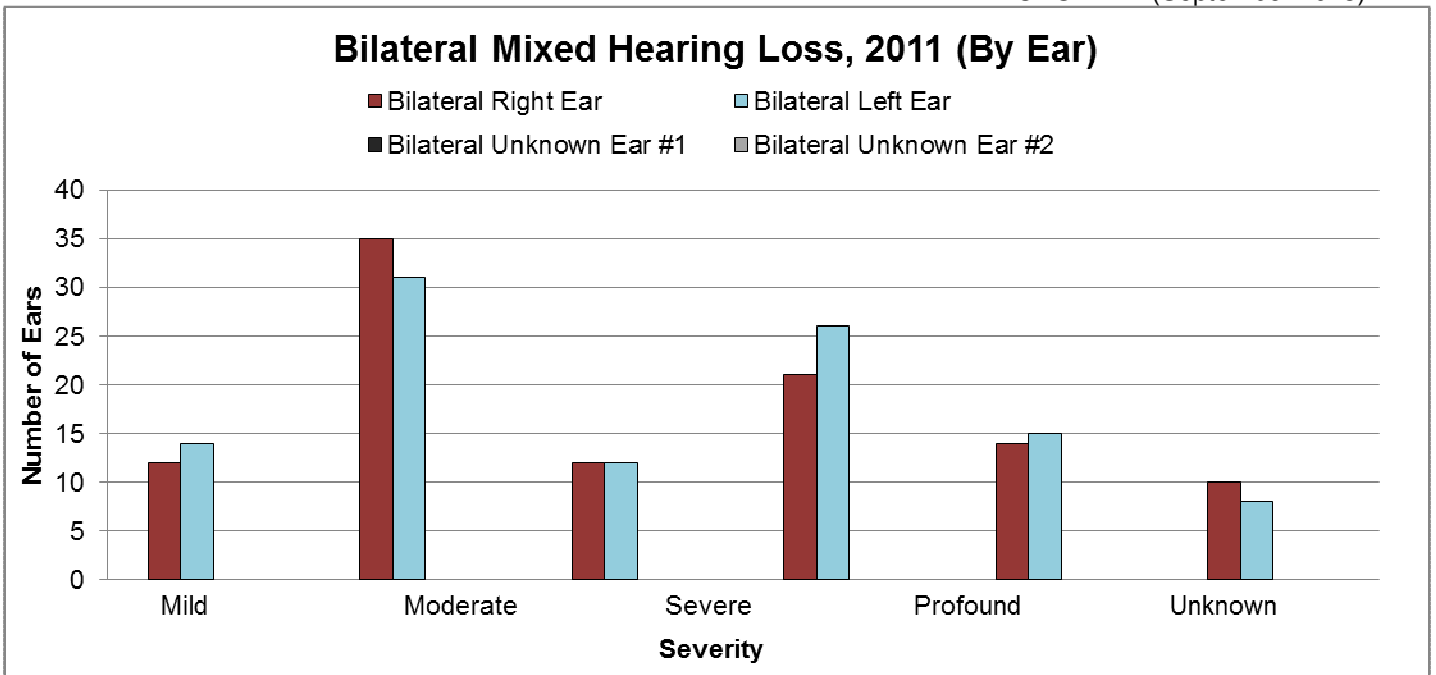
Total Cases of Permanent Hearing Loss (50 states and territories) | 2,182 Children

		BILATERAL (by Ear)				UNILATERAL (by Ear)			LATERALITY UNKNOWN <i>(i.e., Unknown if case is a unilateral or bilateral loss)</i>
		RIGHT EAR	LEFT EAR	UNKNOWN EAR <i>(degree of loss for each ear)</i>		RIGHT EAR	LEFT EAR	UNKNOWN EAR	
Sensorineural	Slight	13	7	0	0	1	0	0	0
	Mild	195	194	0	0	32	44	6	1
	Moderate	266	275	0	0	48	40	4	5
	Moderately Severe	59	67	0	0	7	14	4	0
	Severe	112	116	0	0	45	39	0	3
	Profound	243	233	0	0	37	39	1	1
	Unknown Severity	13	12	0	0	1	3	0	0
Conductive	Slight	0	0	0	0	0	4	0	0
	Mild	22	25	0	0	17	18	0	0
	Moderate	38	31	0	0	57	32	0	0
	Moderately Severe	7	6	0	0	13	4	0	0
	Severe	14	14	0	0	16	11	0	0
	Unknown Severity	11	12	0	0	30	15	0	11
Mixed	Slight	0	0	0	0	0	0	0	0
	Mild	12	14	0	0	1	3	0	0
	Moderate	33	30	0	0	9	10	0	0
	Moderately Severe	12	10	0	0	4	2	0	0
	Severe	22	26	0	0	6	6	0	0
	Profound	14	15	0	0	10	2	0	1
	Unknown Severity	9	8	0	0	1	2	0	1
Type Unknown	Slight	2	1	0	0	0	1	0	0
	Mild	44	43	0	0	10	13	0	9
	Moderate	38	39	0	0	7	10	0	12
	Moderately Severe	8	8	0	0	1	1	0	1
	Severe	18	16	0	0	8	1	0	12
	Profound	13	14	0	0	8	16	0	20
	Unknown Severity	18	20	0	0	23	14	0	19
Auditory Neuropathy	Slight	0	0	0	0	0	0	0	0
	Mild	2	2	0	0	1	2	0	0
	Moderate	1	2	0	0	0	1	0	0
	Moderately Severe	1	1	0	0	0	0	0	0
	Severe	5	3	0	0	0	0	0	0
	Profound	21	22	0	0	3	10	0	0
	Unknown Severity	35	35	0	0	7	3	0	0
Totals by Ear		1,301	1,301	0	0	403	360	15	96
Totals by Child		1,301		0		403	360	15	96
Laterality Totals (by Child)		1,301 Bilateral Cases				778			2,079
Total all Types and Severity (by Child)									2,175
Cases Resolved (i.e., hearing loss to no hearing loss)									7
Overall Total (by Child)									2,182

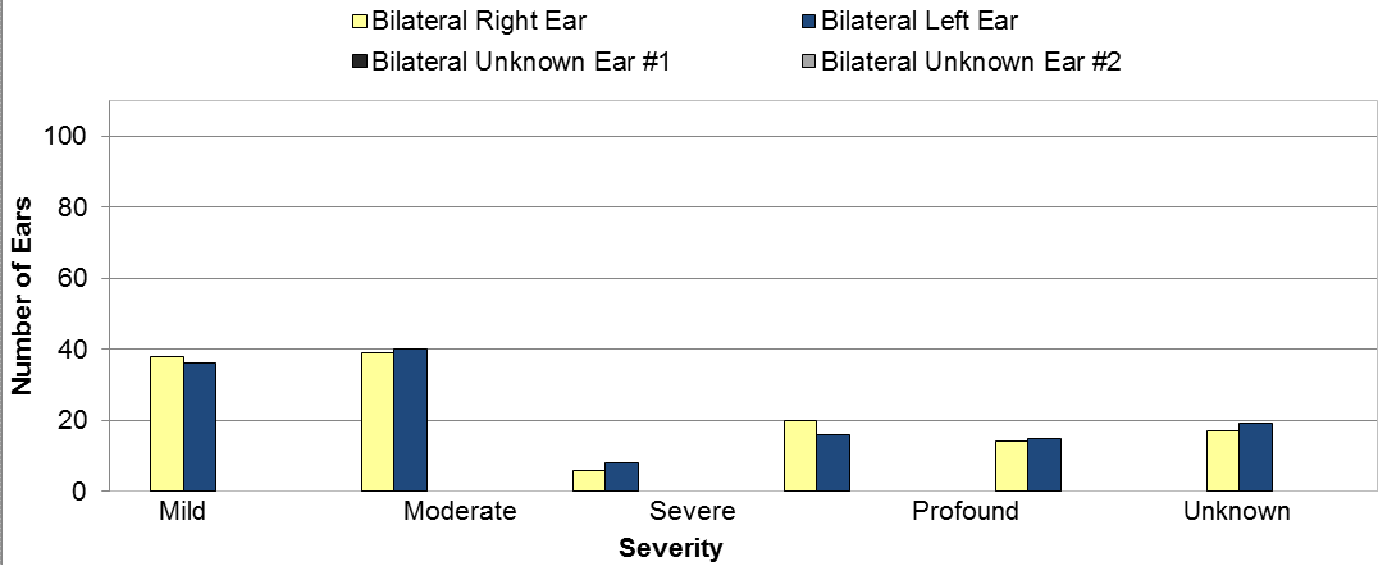
Summary of Type and Severity of Identified Cases of Hearing Loss in 2011



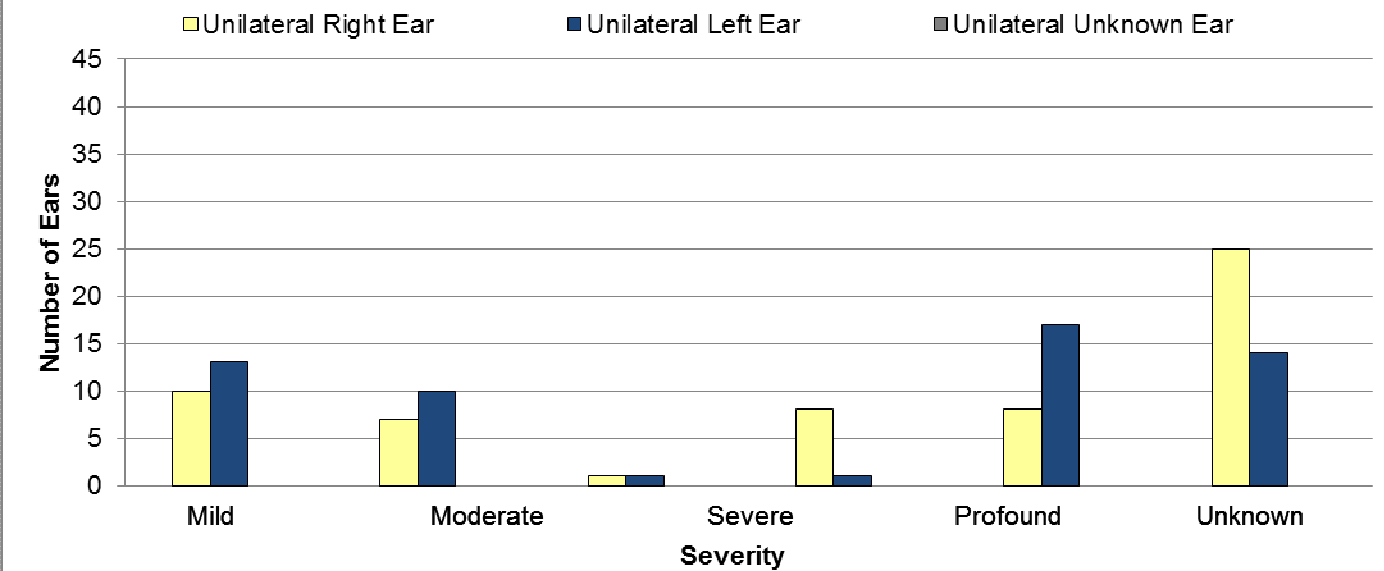


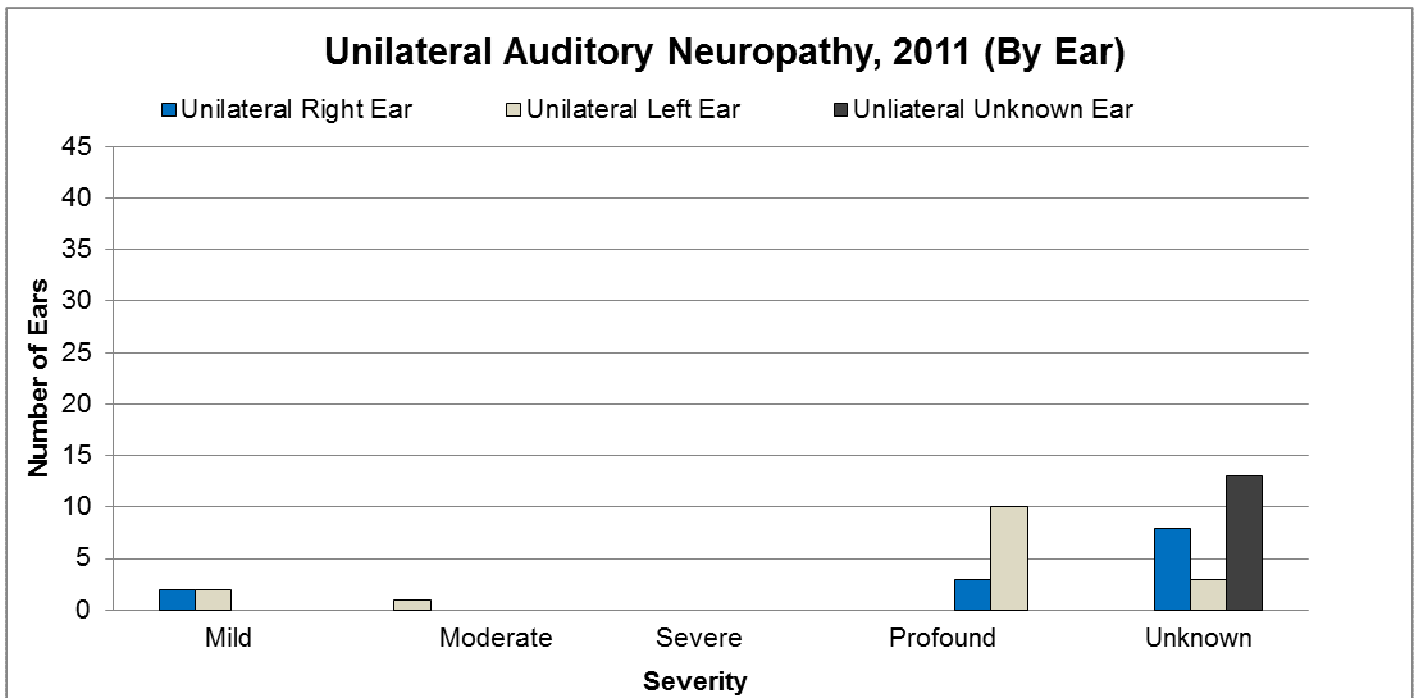
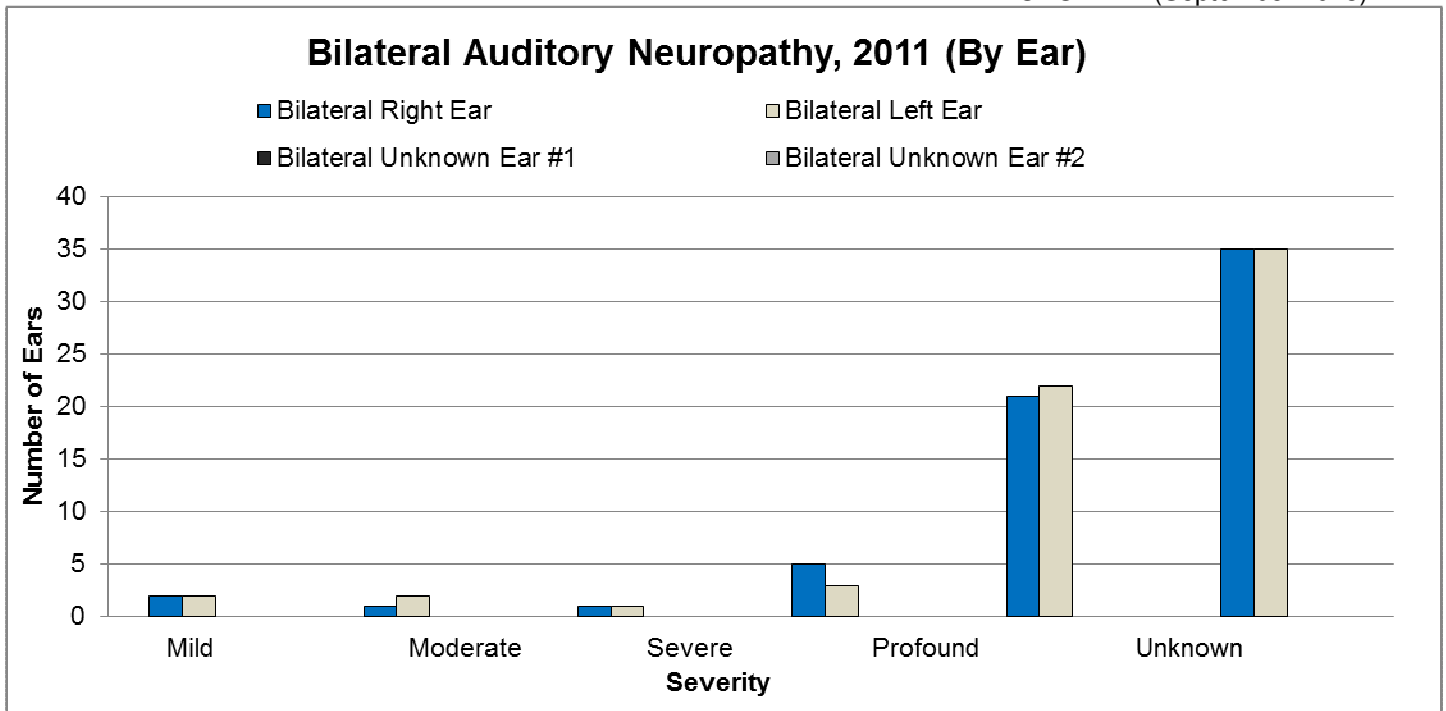


Bilateral Type Unknown, 2011 (By Ear)



Unilateral Type Unknown, 2011 (By Ear)





Laterality Unknown, 2011 (By Ear)

