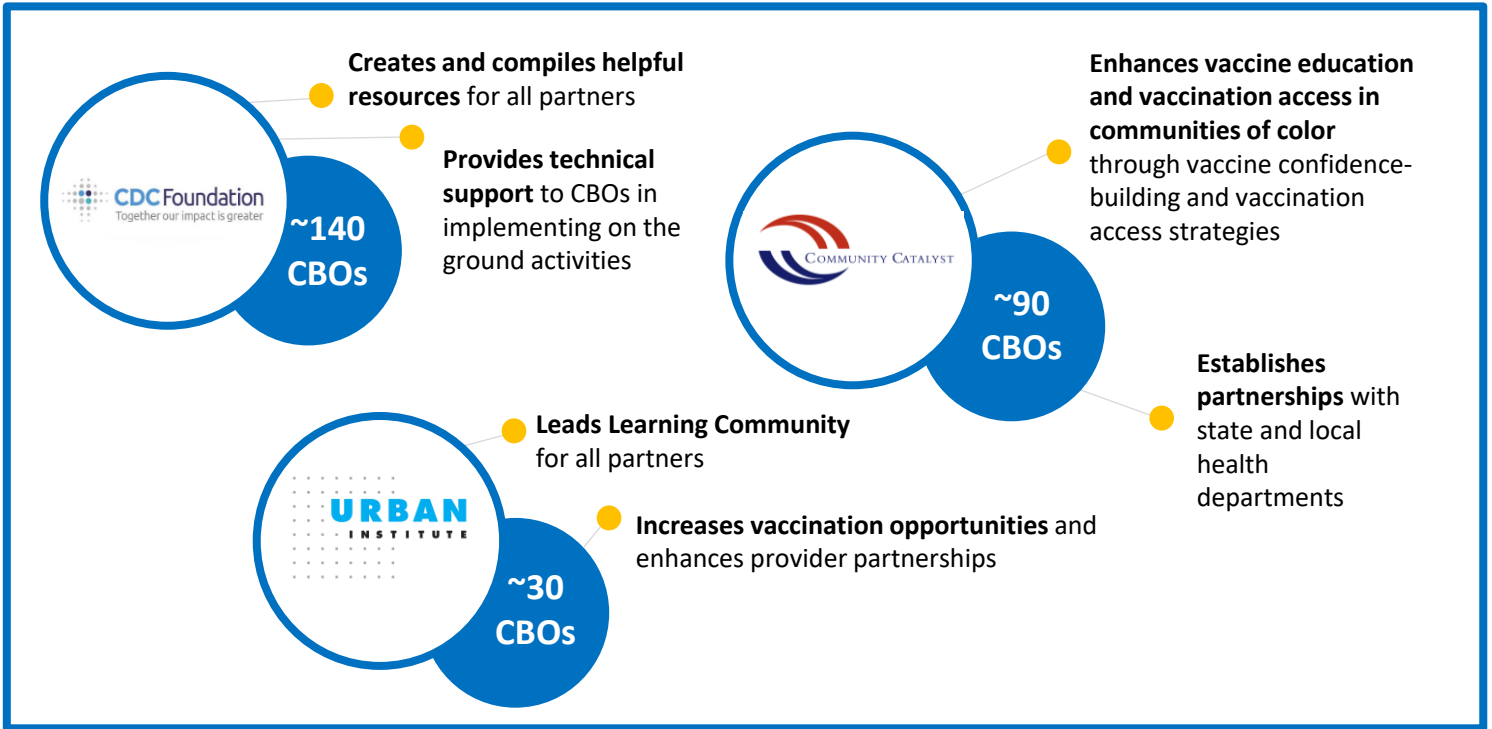


Vaccine Equity through National and Community-Based Partnerships

A Pioneering Approach: \$86.3M to National Partners and Community-Based Organizations

Through the *Partnering for Vaccine Equity (P4VE)* program, CDC partners with **three national-level organizations** to support more than **250 community-based organizations (CBOs)*** across the nation to increase adult vaccination coverage and reduce immunization disparities in communities of color. Advancing its mission to achieve health equity, CDC allocated **\$86.3M in funding for three national organizations – CDC Foundation, Community Catalyst, and Urban Institute – of which more than 70 percent was subawarded to CBOs.**



Mobilizing Community-level Action to Increase Vaccine Confidence and Uptake

This unprecedented effort makes federal funding more accessible to small, specialized organizations, and supports local efforts to increase vaccination access and confidence among communities of color.

199,223

Community-level spokespeople educated, empowered, or trained

2.09 M

people who attended promotional events from populations of focus

1.84 M

COVID-19 [any dose or booster] and flu vaccine doses administered

